



WILDLIFE HABITAT FEATURE INVENTORY

NORTHERN VIRGINIA STREAM RESTORATION BANK

*THE GLADE – REACH 6*

FAIRFAX COUNTY, VIRGINIA

Prepared For:

Northern Virginia Stream Restoration, L.C.  
c/o Wetland Studies and Solutions, Inc.  
5300 Wellington Branch Drive, Suite 100  
Gainesville, Virginia 20155

WSSI Project #20030

February 2009

L:\20000s\20030\Admin\Wildlife Inventory\Wildlife Inventory Reach - 6\Reach6wildlife-COVER.DOC

## Wildlife Habitat Feature Inventory

The Glade – Reach 6  
Fairfax County, Virginia  
WSSI #20030

February 25, 2009

### Executive Summary

On December 23 and 29, 2008 Wetland Studies and Solutions, Inc. (WSSI), assisted by Reston Association Staff and William Sipple, conducted a Wildlife Habitat Feature Inventory along design Reach 6 of The Glade portion of the Northern Virginia Stream Restoration Bank (NVSRB). This study was conducted to determine the location of active, inactive, and potential wildlife denning and nesting features within a study area along Reach 6 of The Glade.

In summary, a number of wildlife habitat features were found, including stick nests, squirrel nests, tree cavities, dens, sub surface runs, and snags within the study area of design Reach 6 of The Glade. The results of this inventory will be used by project engineers to minimize the stream restoration project's impact on local wildlife.

### Introduction

As set forth in NVSRB Banking Instrument, dated February 17, 2006 and prepared by WSSI, the Northern Virginia Stream Restoration, L.C. will restore approximately 14 miles of streams and upland buffers within portions of the Snakeden Branch, Colvin Run, and The Glade watersheds in Reston, Virginia. In response to resident concerns about the effects of restoration activities on resident wildlife populations within The Glade, WSSI is inventorying the location of active, inactive, and potential wildlife denning and nesting features within The Glade portion of the NVSRB. This report identifies the location of these features along design Reach 6 of The Glade. The location of these features in the remaining portions of The Glade will be documented in separate inventory reports.

### Project Area

The study area includes approximately 5,400 linear feet of stream along Reach 6 of The Glade, as well as the adjacent riparian corridor. The study area is located north of Lawyers Road (Route 673) and west of Twin Branches Road. Exhibit 1 is a vicinity map that depicts the approximate location of the study area.

The study area is covered mostly by mixed-deciduous forest, as depicted in the February 23, 2004 Natural Color Imagery from Air Survey in Exhibit 2. The Glade flows in a northeasterly direction through the central portion of the study area. Both an asphalt recreational trail and an unpaved horse trail, which cross The Glade multiple times, are located parallel to the stream. The study area is gently to moderately sloping. The topography can be seen in the excerpt from the Vienna, Virginia-Maryland 1994 USGS topographical quadrangle map included as Exhibit 3.

The boundaries of jurisdictional wetlands and other waters of the U.S. (WOUS) located within the study area were delineated and survey-located by WSSI as described in The Glade delineation report, dated October 9, 2008.

### Methodology

On December 23 and 29, 2008, environmental scientist Jean Tufts, WPIT<sup>1</sup>, environmental compliance specialist Jason Beeler CPESC-IT<sup>2</sup>, environmental scientists Sean D. Sipple, PWS, PWD, CT<sup>3</sup>, Brian Petty<sup>4</sup> and ecologist William S. Sipple<sup>5</sup> examined the entire study area for potential wildlife habitat features. The study area was inspected to identify and map specific wildlife habitat features within the study area to classify them according to type. Only representative wildlife habitat features (or lack of) were photographed, as depicted in Exhibit 4. Any wildlife species directly observed or animal signs such as tracks and scat were noted during the fieldwork. For the purpose of this report, WSSI has defined the wildlife habitat features as follows:

- A. Nest** – A nest is defined as a place of refuge to hold an animal's eggs and/or provide a place to raise their offspring. Nests are usually made of sticks and leaves. Nest were subsequently categorized in Table 1 as:

- 1) Stick Nest
- 2) Squirrel Nest
- 3) Songbird nest

- B. Cavity** – A cavity is defined as a hollowed out feature in a standing tree which can provide an animal with refuge and a place to raise their offspring. Cavities were subsequently categorized in Table 1 as:

- 1) Snag
- 2) Live Tree

- C. Den** – A den is defined as a hollowed out feature, either in a deadfall, tree hollow, or ground hollow. Dens were subsequently categorized in Table 1 as:

- 1) Deadfall
- 2) Tree Hollow
- 3) Ground Hollow

- D. Subsurface Erosional Feature** – A subsurface erosional feature is defined as a naturally-occurring subterranean hollow, usually associated

---

<sup>1</sup> WSSI - Wetland Professional In-Training, Society of Wetland Scientists Certification Program, Inc.  
<sup>2</sup> WSSI - Certified Professional in Erosion and Sediment Control - In Training  
<sup>3</sup> WSSI - Professional Wetland Scientists, Professional Wetland Delineator, Certified Taxonomist  
<sup>4</sup> Reston Association  
<sup>5</sup> Principal of William S. Sipple Wetland and Environmental Training and Consulting



with a drainage feature and may be used as a wildlife travel corridor. These features are not likely to be utilized as den sites due to their high probability of flooding during runoff-producing events. Subsurface erosional features were subsequently categorized in Table 1 as:

- 1) Inactive
- 2) Active

**E. Snags** - A snag refers to a standing, partly or completely dead tree, often missing a top or most of the smaller branches, and greater than or equal to 20 inches diameter breast height. These features were identified regardless of evidence of known wildlife usage.

### Results and Conclusions

A number of wildlife habitat features were noted in design Reach 6 of The Glade during this inventory, including stick and squirrel nests, cavities, snags, and subsurface erosional features. The location of these features is depicted on the Wildlife Habitat Feature Location Map (Exhibit 5) and is summarized in Table 1 below. The results of this inventory will be used by project engineers to further limit the stream restoration project's impact on local wildlife habitat features.

**Table 1. List of Wildlife Habitat Features Observed Within Design Reach 6 of The Glade.**

Feature	Tree Tag	Description
A1	Tree #N/A	Inactive unknown stick nest, 40' West of Tree #23744
A1	Tree #N/A	Inactive unknown stick nest, 20' North of Tree #23748
A1	Tree #N/A	Inactive unknown stick nest, 60' North of Tree #23750
A1	Tree #N/A	Inactive unknown stick nest, 80' North of Tree #23750
A1	Tree #23663	Inactive unknown stick nest
A1	Tree #23667	Inactive unknown stick nest
A1	Tree #24531	Inactive unknown stick nest
A1	Tree #24765	Inactive unknown stick nest
A1	Tree #24918	Inactive unknown stick nest
A1	Tree #24922	Inactive unknown stick nest
A1	Tree #25051	Inactive unknown stick nest
A1	Tree #25181	Inactive unknown stick nest
A1/A2	Tree #N/A	Inactive unknown stick nest, Squirrel leaf nest, 60' NW of Tree #23706
A2	Tree #N/A	Squirrel leaf nest, 60' North of Tree #24868
A2	Tree #N/A	Squirrel leaf nest, 40' SE of Tree #24877
A2	Tree #N/A	Squirrel leaf nest, 80' NW of Tree #23734
A2	Tree #N/A	Squirrel leaf nest, 40' NE of Tree #23788
A2	Tree #23800	Squirrel leaf nest
A2	Tree #23812	Squirrel leaf nest
A2	Tree #23861	Squirrel leaf nest
A2	Tree #23883	Squirrel leaf nest
A2	Tree #23901	Squirrel leaf nest

**Table 1. List of Wildlife Habitat Features Observed Within Design Reach 6 of The Glade. (Cont.)**

Feature	Tree Tag	Description
A2	Tree #23905	Squirrel leaf nest
A2	Tree #24522	Squirrel leaf nest
A2	Tree #24665	Squirrel leaf nest
A2	Tree #24985	Squirrel leaf nest
A2	Tree #24993	Squirrel leaf nest
A2	Tree #25006	Squirrel leaf nest
A2	Tree #25031	Squirrel leaf nest
A2	Tree #25034	Squirrel leaf nest
A2	Tree #25109	Squirrel leaf nest
A2/B1	Tree #24740	Squirrel leaf nest, Unknown cavity in snag
A3	Tree #N/A	Inactive unknown song bird nest, 40' SW of Tree #24541
A3	Tree #N/A	Inactive unknown song bird nest, 52' NE of Tree #23585
A3	Tree #N/A	Inactive unknown song bird nest, 40' NW of Tree #23598
A3	Tree #N/A	Inactive unknown song bird nest, 15' West of Tree #24665
A3	Tree #23652	Inactive unknown song bird nest
A3	Tree #23823	Inactive unknown song bird nest
A3	Tree #24670	Inactive unknown song bird nest
A3	Tree #24697	Inactive unknown song bird nest
A3	Tree #25022	Inactive unknown song bird nest
B1	Tree #N/A	Unknown cavity in snag, 25' SW of Tree #24544
B1	Tree #N/A	Unknown cavity in snag, 40' North of Tree #23598
B1	Tree #N/A	Unknown cavity in snag, 30' North of Tree #23598
B1	Tree #N/A	Unknown cavity in snag, 20' NE of Tree #23598
B1	Tree #N/A	Unknown cavity in snag, 30' NW of Tree #24673
B1	Tree #N/A	Unknown cavity in snag, 10' South of Tree #24770
B1	Tree #N/A	Unknown cavity in snag, 10' West of Tree #24985
B1	Tree #N/A	Unknown cavity in snag, 5' Upstream of Tree #25175
B1	Tree #23602	Unknown cavity in snag
B1	Tree #23626	Unknown cavity in snag
B1	Tree #23631	Unknown cavity in snag
B1	Tree #23688	Unknown cavity in snag
B1	Tree #23725	Unknown cavity in snag
B1	Tree #23731	Unknown cavity in snag
B1	Tree #23858	Unknown cavity in snag
B1	Tree #24529	Unknown cavity in snag
B1	Tree #24622	Unknown cavity in snag
B1	Tree #24673	Unknown cavity in snag
B1	Tree #24676	Unknown cavity in snag
B1	Tree #24785	Unknown cavity in snag
B1	Tree #24957	Unknown cavity in snag
B1	Tree #25012	Unknown cavity in snag
B1	Tree #25159	Unknown cavity in snag
B2	Tree #N/A	Unknown cavity in live tree, 40' NE of Tree #23567
B2	Tree #N/A	Unknown cavity in live tree, 75' East of Tree #23570
B2	Tree #N/A	Unknown cavity in live tree, 94' SE of Tree #24535
B2	Tree #N/A	Unknown cavity in live tree, 96' SE of Tree #24535



**Table 1. List of Wildlife Habitat Features Observed Within Design Reach 6 of The Glade. (Cont.)**

Feature	Tree Tag	Description
B2	Tree #N/A	Unknown cavity in live tree, 30' NW of Tree #23611
B2	Tree #N/A	Unknown cavity in live tree, 50' NE of Tree #24637
B2	Tree #N/A	Unknown cavity in live tree, 30' NE of Tree #24635
B2	Tree #N/A	Unknown cavity in live tree, 30' NW of Tree #23717
B2	Tree #23571	Unknown cavity in live tree
B2	Tree #23584	Unknown cavity in live tree
B2	Tree #23589	Unknown cavity in live tree
B2	Tree #23596	Unknown cavity in live tree
B2	Tree #23598	Unknown cavity in live tree
B2	Tree #23601	Unknown cavity in live tree
B2	Tree #23603	Unknown cavity in live tree
B2	Tree #23605	Unknown cavity in live tree
B2	Tree #23606	Unknown cavity in live tree
B2	Tree #23611	Unknown cavity in live tree
B2	Tree #23612	Unknown cavity in live tree
B2	Tree #23616	Unknown cavity in live tree
B2	Tree #23619	Unknown cavity in live tree
B2	Tree #23664	Unknown cavity in live tree
B2	Tree #23665	Unknown cavity in live tree
B2	Tree #23671	Unknown cavity in live tree
B2	Tree #23672	Unknown cavity in live tree
B2	Tree #23684	Unknown cavity in live tree
B2	Tree #23693	Unknown cavity in live tree
B2	Tree #23694	Unknown cavity in live tree
B2	Tree #23697	Unknown cavity in live tree
B2	Tree #23700	Unknown cavity in live tree
B2	Tree #23702	Unknown cavity in live tree
B2	Tree #23726	Unknown cavity in live tree
B2	Tree #23734	Unknown cavity in live tree
B2	Tree #23746	Unknown cavity in live tree
B2	Tree #23889	Unknown cavity in live tree
B2	Tree #24525	Unknown cavity in live tree
B2	Tree #24534	Unknown cavity in live tree
B2	Tree #24535	Unknown cavity in live tree
B2	Tree #24540	Unknown cavity in live tree
B2	Tree #24544	Unknown cavity in live tree
B2	Tree #24547	Unknown cavity in live tree
B2	Tree #24552	Unknown cavity in live tree
B2	Tree #24556	Unknown cavity in live tree
B2	Tree #24560	Unknown cavity in live tree
B2	Tree #24582	Unknown cavity in live tree
B2	Tree #24607	Unknown cavity in live tree
B2	Tree #24616	Unknown cavity in live tree
B2	Tree #24624	Unknown cavity in live tree
B2	Tree #24627	Unknown cavity in live tree

**Table 1. List of Wildlife Habitat Features Observed Within Design Reach 6 of The Glade. (Cont.)**

Feature	Tree Tag	Description
B2	Tree #24662	Unknown cavity in live tree
B2	Tree #24664	Unknown cavity in live tree
B2	Tree #24678	Unknown cavity in live tree
B2	Tree #24681	Unknown cavity in live tree
B2	Tree #24724	Unknown cavity in live tree
B2	Tree #24725	Unknown cavity in live tree
B2	Tree #24736	Unknown cavity in live tree
B2	Tree #24749	Unknown cavity in live tree
B2	Tree #24775	Unknown cavity in live tree
B2	Tree #24791	Unknown cavity in live tree
B2	Tree #24808	Unknown cavity in live tree
B2	Tree #24888	Unknown cavity in live tree
B2	Tree #24956	Unknown cavity in live tree
B2	Tree #25014	Unknown cavity in live tree
B2	Tree #25194	Unknown cavity in live tree
C1	Tree #N/A	Inactive den in deadfall, Between Tree #24542 & 24543
C1	Tree #N/A	Inactive den in deadfall, 30' East of Tree #23672
C1	Tree #N/A	Inactive den in deadfall, 15' East of Tree #24805
C1	Tree #N/A	Inactive den in deadfall, 10' North of Tree #24866
C1	Tree #N/A	Inactive den in deadfall, Adjacent to Tree #23735
C1	Tree #23638	Inactive den in deadfall
C2	Tree #N/A	Inactive den in tree hollow, 4' North of Tree #24535
C3	Tree #N/A	Inactive den in ground hollow, 27' NE of Tree #23628
C3	Tree #N/A	Inactive den in ground hollow, 7' SE of Tree #23722
C3	Tree #N/A	Inactive den in ground hollow, 26' NW of Tree #24938
C3	Tree #N/A	Inactive den in ground hollow, 15' SW of Tree #23746
C3	Tree #N/A	Inactive den in ground hollow, 10' NW of Tree #25147
C3	Tree #N/A	Inactive den in ground hollow, 30' East of Tree #25200
C3	Tree #N/A	Inactive den in ground hollow, 10' SE of Tree #23878
D1	Tree #N/A	Inactive subsurface erosional feature, 8' West of Tree #24638
D1	Tree #N/A	Inactive subsurface erosional feature, 10' NW of Tree #23638
D1	Tree #N/A	Inactive subsurface erosional feature, 30' Downstream of Tree #25179
D1	Tree #25054	Inactive subsurface erosional feature
D2	Tree #N/A	Active subsurface erosional feature, 50' East of Tree #23628
E	Tree #N/A	Snag, 20' NE of Tree #24635
E	Tree #N/A	Snag, 15' NW of Tree #24773
E	Tree #N/A	Snag, 5' SW of Tree #23727
E	Tree #23570	Snag
E	Tree #23586	Snag
E	Tree #23647	Snag
E	Tree #23683	Snag
E	Tree #23686	Snag
E	Tree #23698	Snag
E	Tree #23841	Snag
E	Tree #23843	Snag
E	Tree #23855	Snag



**Table 1. List of Wildlife Habitat Features Observed Within Design Reach 6 of The Glade. (Cont.)**

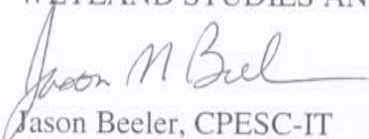
Feature	Tree Tag	Description
E	Tree #23856	Snag
E	Tree #23880	Snag
E	Tree #24537	Snag
E	Tree #24542	Snag
E	Tree #24639	Snag
E	Tree #24675	Snag
E	Tree #24805	Snag
E	Tree #24879	Snag
E	Tree #24944	Snag
E	Tree #25009	Snag
E	Tree #25016	Snag
E	Tree #25176	Snag

### Limitations

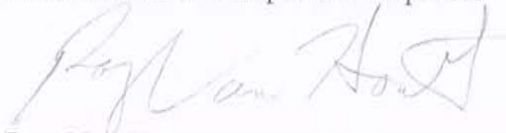
This study is based on examination of the conditions on the study site at the time of our review and does not address conditions in the future. Such conditions change over time. Therefore, our conclusions may vary from future observations. Our wildlife habitat feature inventory report has been prepared in accordance with generally accepted guidelines for the conduct of such evaluations. We make no other warranties, either expressed or implied that other wildlife species will not be observed in the project site during future wildlife surveys.

If you have any questions regarding this report, please contact me at (703) 679-5631 or [rvanhouten@wetlandstudies.com](mailto:rvanhouten@wetlandstudies.com).

WETLAND STUDIES AND SOLUTIONS, INC.



Jason Beeler, CPESC-IT  
Environmental Compliance Inspector



Roy Van Houten, AWB, CWCP  
Wildlife Biologist





Copyright ADC The Map People  
Permitted Use Number 20711184



**Vicinity Map**  
**Glade Reach 6**  
**WSSI #20030**  
**Scale: 1" = 2000'**





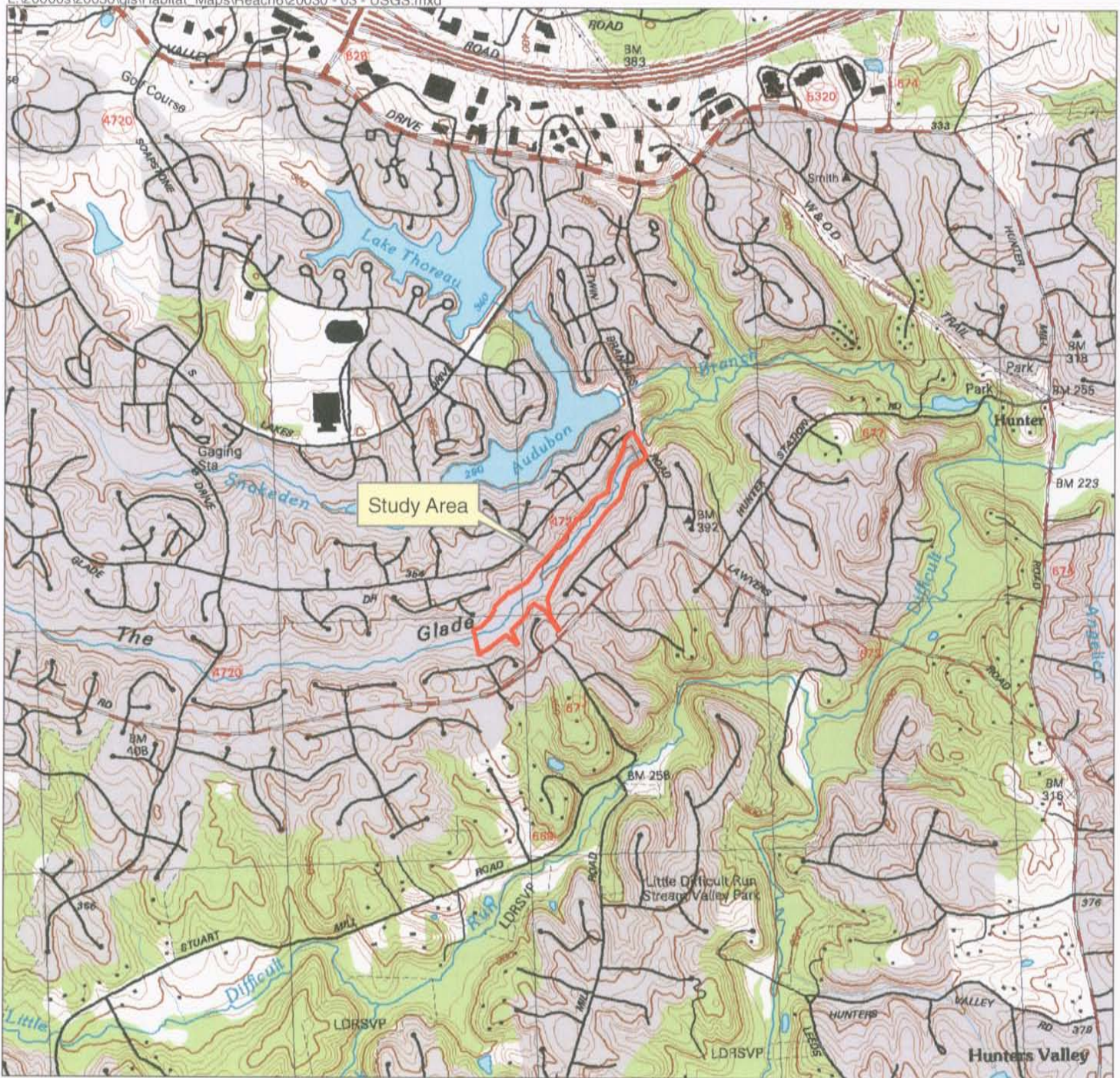


February 2004 Natural Color Imagery  
Glade Reach 6  
WSSI #20030  
Scale: 1" = 500'



Photo Source: Air Survey





**USGS Quad Map**  
**Vienna, VA-MD 1994**  
**Glade Reach 6**  
**WSSI #20030**  
**Scale: 1" = 2000'**

Latitude: 38°55'36" N  
 Longitude: 77°19'42" W  
 Hydrologic Unit Code (HUC): 020700081004  
 Stream Class: III  
 Name of Watershed: The Glade





**REACH 6 – THE GLADE**  
**WILDLIFE HABITAT FEATURE INVENTORY – DECEMBER 23 and 29, 2008**  
**REPRESENTATIVE PHOTOS TAKEN BY JASON BEELER**



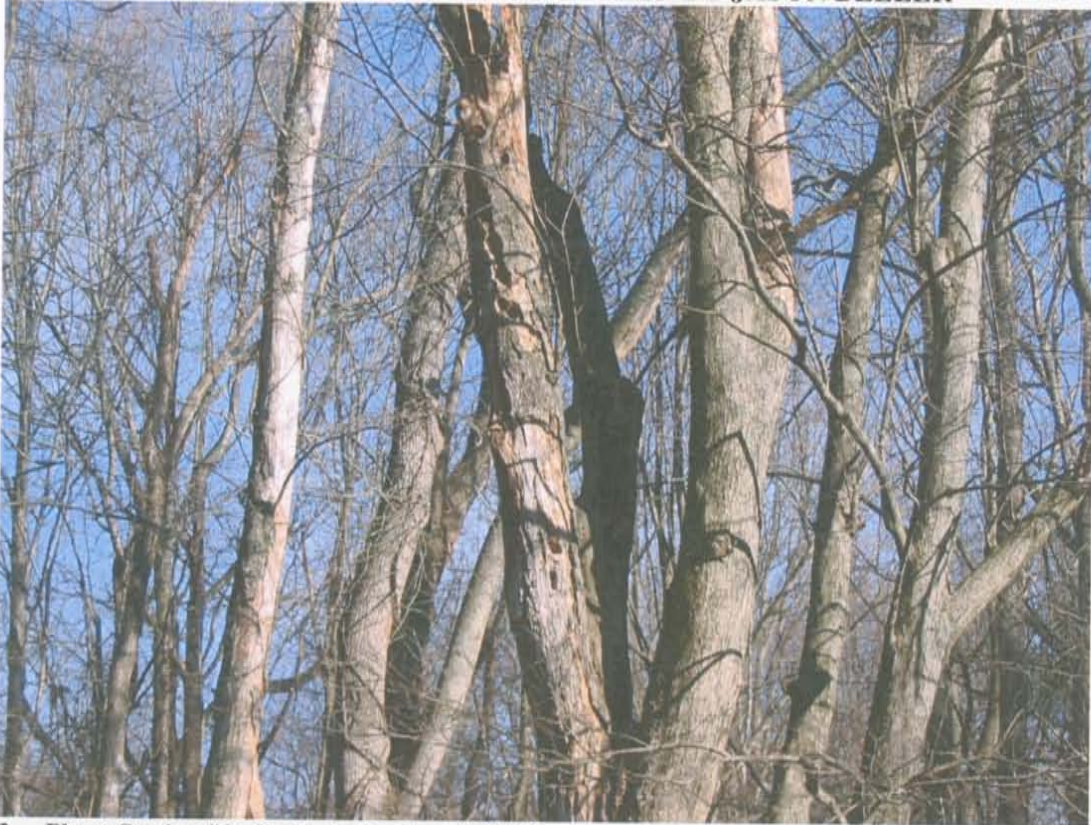
**1. Photo Station #1: Inactive unidentified stick nest in tree located approximately 80 feet north of tree #23570.**



**2. Photo Station #2: Inactive squirrel nest in tree #23812.**



**REACH 6 – THE GLADE**  
**WILDLIFE HABITAT FEATURE INVENTORY – DECEMBER 23 and 29, 2008**  
**REPRESENTATIVE PHOTOS TAKEN BY JASON BEELER**



**3. Photo Station #3: Cavity in live tree #23746.**



**4. Photo Station #4: Inactive unknown den in ground hollow 25 feet north of tree #25147.**

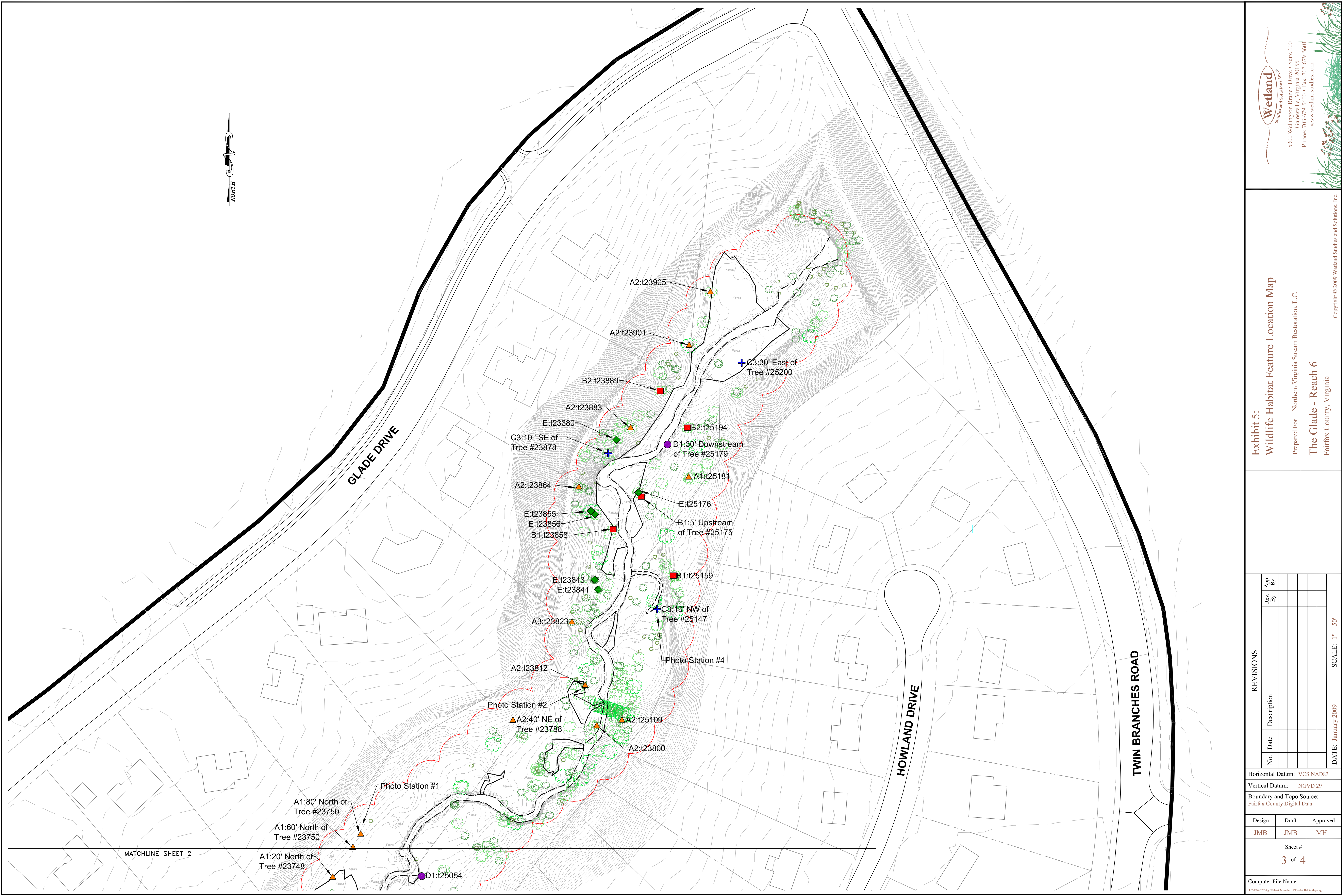












MATCHLINE SHEET 2

Wetland  
Studies and Solutions, Inc.  
5300 Wallington Branch Drive • Suite 100  
Chesapeake, Virginia 20155  
Phone: 703.679.5600 • Fax: 703.679.5601  
www.wetlandstudies.com

Exhibit 5:  
Wildlife Habitat Feature Location Map

Prepared For: Northern Virginia Stream Restoration, L.C.

The Glade - Reach 6  
Fairfax County, Virginia

Copyright © 2009 Wetland Studies and Solutions, Inc.

Horizontal Datum: VCS NAD83

Vertical Datum: NGVD 29

Boundary and Topo Source:  
Fairfax County Digital Data

Design	Draft	Approved
JMB	JMB	MH

Sheet #  
3 of 4

Computer File Name:  
L:\2009\20090701\Exhibit\_Maps\Reach6\Reach6\_StationMap.dwg

REVISIONS

No.	Date	Description	Rev. By	App. By

DATE: January 2009

SCALE: 1" = 50'



# WILDLIFE INVENTORY HABITAT TABULATIONS

Feature	Tree Tag	Description
A1	Tree #219A	Inactive unknown stick nest, 40' West of Tree #23744
A1	Tree #219A	Inactive unknown stick nest, 20' North of Tree #23748
A1	Tree #219A	Inactive unknown stick nest, 60' North of Tree #23750
A1	Tree #219A	Inactive unknown stick nest, 80' North of Tree #23750
A1	Tree #23663	Inactive unknown stick nest
A1	Tree #23667	Inactive unknown stick nest
A1	Tree #24765	Inactive unknown stick nest
A1	Tree #24918	Inactive unknown stick nest
A1	Tree #24922	Inactive unknown stick nest
A1	Tree #25051	Inactive unknown stick nest
A1	Tree #25181	Inactive unknown stick nest
A1/A2	Tree #219A	Inactive unknown stick nest, Squirrel leaf nest, 60' NW of Tree #23706
A2	Tree #219A	Squirrel leaf nest, 60' North of Tree #24868
A2	Tree #219A	Squirrel leaf nest, 80' SE of Tree #24877
A2	Tree #219A	Squirrel leaf nest, 80' NW of Tree #23734
A2	Tree #219A	Squirrel leaf nest, 40' NE of Tree #23788
A2	Tree #23800	Squirrel leaf nest
A2	Tree #23812	Squirrel leaf nest
A2	Tree #23861	Squirrel leaf nest
A2	Tree #23883	Squirrel leaf nest
A1	Tree #23901	Squirrel leaf nest
A2	Tree #23905	Squirrel leaf nest
A2	Tree #24665	Squirrel leaf nest
A2	Tree #24985	Squirrel leaf nest
A2	Tree #24993	Squirrel leaf nest
A2	Tree #25006	Squirrel leaf nest
A2	Tree #25031	Squirrel leaf nest
A2	Tree #25034	Squirrel leaf nest
A2	Tree #25109	Squirrel leaf nest
A2/B1	Tree #24740	Squirrel leaf nest, Unknown cavity in snag
A3	Tree #219A	Inactive unknown song bird nest, 40' SW of Tree #24541
A3	Tree #219A	Inactive unknown song bird nest, 52' NE of Tree #23585
A3	Tree #219A	Inactive unknown song bird nest, 40' NW of Tree #23598
A3	Tree #219A	Inactive unknown song bird nest, 15' West of Tree #24665
A3	Tree #23652	Inactive unknown song bird nest
A3	Tree #23823	Inactive unknown song bird nest
A3	Tree #24670	Inactive unknown song bird nest
A3	Tree #24697	Inactive unknown song bird nest
A3	Tree #25022	Inactive unknown song bird nest
B1	Tree #219A	Unknown cavity in snag, 25' SW of Tree #24544
B1	Tree #219A	Unknown cavity in snag, 40' North of Tree #23598
B1	Tree #219A	Unknown cavity in snag, 30' North of Tree #23598
B1	Tree #219A	Unknown cavity in snag, 20' NE of Tree #23598
B1	Tree #219A	Unknown cavity in snag, 30' NW of Tree #24673
B1	Tree #219A	Unknown cavity in snag, 10' South of Tree #24770
B1	Tree #219A	Unknown cavity in snag, 40' West of Tree #24895
B1	Tree #219A	Unknown cavity in snag, 5' Upstream of Tree #25175
B1	Tree #23802	Unknown cavity in snag
B1	Tree #23826	Unknown cavity in snag
B1	Tree #23831	Unknown cavity in snag
B1	Tree #23888	Unknown cavity in snag
B1	Tree #23725	Unknown cavity in snag
B1	Tree #23731	Unknown cavity in snag
B1	Tree #23858	Unknown cavity in snag
B1	Tree #24622	Unknown cavity in snag
B1	Tree #24673	Unknown cavity in snag
B1	Tree #24676	Unknown cavity in snag
B1	Tree #24785	Unknown cavity in snag
B1	Tree #24957	Unknown cavity in snag
B1	Tree #25012	Unknown cavity in snag
B1	Tree #25159	Unknown cavity in snag
B2	Tree #219A	Unknown cavity in live tree, 30' NW of Tree #23611
B2	Tree #219A	Unknown cavity in live tree, 30' NE of Tree #24637
B2	Tree #219A	Unknown cavity in live tree, 30' NE of Tree #24635
B2	Tree #219A	Unknown cavity in live tree, 30' NW of Tree #23717
B2	Tree #23584	Unknown cavity in live tree
B2	Tree #23589	Unknown cavity in live tree
B2	Tree #23596	Unknown cavity in live tree
B2	Tree #23598	Unknown cavity in live tree
B2	Tree #23601	Unknown cavity in live tree
B2	Tree #23603	Unknown cavity in live tree
B2	Tree #23605	Unknown cavity in live tree
B2	Tree #23606	Unknown cavity in live tree
B2	Tree #23611	Unknown cavity in live tree
B2	Tree #23612	Unknown cavity in live tree
B2	Tree #23616	Unknown cavity in live tree
B2	Tree #23619	Unknown cavity in live tree
B2	Tree #23684	Unknown cavity in live tree
B2	Tree #23685	Unknown cavity in live tree
B2	Tree #23671	Unknown cavity in live tree
B2	Tree #23672	Unknown cavity in live tree
B2	Tree #23684	Unknown cavity in live tree
B2	Tree #23693	Unknown cavity in live tree
B2	Tree #23694	Unknown cavity in live tree
B2	Tree #23697	Unknown cavity in live tree
B2	Tree #23700	Unknown cavity in live tree
B2	Tree #23702	Unknown cavity in live tree
B2	Tree #23726	Unknown cavity in live tree
B2	Tree #23734	Unknown cavity in live tree
B2	Tree #23746	Unknown cavity in live tree
B2	Tree #23889	Unknown cavity in live tree
B2	Tree #24540	Unknown cavity in live tree
B2	Tree #24544	Unknown cavity in live tree
B2	Tree #24547	Unknown cavity in live tree
B2	Tree #24552	Unknown cavity in live tree
B2	Tree #24556	Unknown cavity in live tree
B2	Tree #24560	Unknown cavity in live tree
B2	Tree #24582	Unknown cavity in live tree
B2	Tree #24687	Unknown cavity in live tree

Feature	Tree Tag	Description
B2	Tree #24616	Unknown cavity in live tree
B2	Tree #24624	Unknown cavity in live tree
B2	Tree #24627	Unknown cavity in live tree
B2	Tree #24662	Unknown cavity in live tree
B2	Tree #24664	Unknown cavity in live tree
B2	Tree #24678	Unknown cavity in live tree
B2	Tree #24681	Unknown cavity in live tree
B2	Tree #24724	Unknown cavity in live tree
B2	Tree #24725	Unknown cavity in live tree
B2	Tree #24736	Unknown cavity in live tree
B2	Tree #24749	Unknown cavity in live tree
B2	Tree #24775	Unknown cavity in live tree
B2	Tree #24791	Unknown cavity in live tree
B2	Tree #24808	Unknown cavity in live tree
B2	Tree #24888	Unknown cavity in live tree
B2	Tree #24956	Unknown cavity in live tree
B2	Tree #25014	Unknown cavity in live tree
B2	Tree #25194	Unknown cavity in live tree
C1	Tree #N/A	Inactive den in deadfall, Between Tree #24542 & 24543
C1	Tree #N/A	Inactive den in deadfall, 30' East of Tree #23672
C1	Tree #N/A	Inactive den in deadfall, 15' East of Tree #24805
C1	Tree #N/A	Inactive den in deadfall, 10' North of Tree #24866
C1	Tree #N/A	Inactive den in deadfall, Adjacent to Tree #23735
C1	Tree #23638	Inactive den in deadfall
C3	Tree #N/A	Inactive den in tree hollow, 4' North of Tree #24535
C3	Tree #N/A	Inactive den in ground hollow, 27' NE of Tree #23628
C3	Tree #N/A	Inactive den in ground hollow, 7' SE of Tree #23722
C3	Tree #N/A	Inactive den in ground hollow, 26' NW of Tree #24938
C3	Tree #N/A	Inactive den in ground hollow, 15' SW of Tree #23746
C3	Tree #N/A	Inactive den in ground hollow, 10' NW of Tree #25147
C3	Tree #N/A	Inactive den in ground hollow, 30' East of Tree #25200
D1	Tree #N/A	Inactive den in ground hollow, 10' SE of Tree #23878
D1	Tree #N/A	Inactive subsurface erosional feature, 10' NW of Tree #23638
D1	Tree #N/A	Inactive subsurface erosional feature, 30' Downstream of Tree #25179
D1	Tree #25054	Inactive subsurface erosional feature
D2	Tree #N/A	Active subsurface erosional feature, 50' East of Tree #23628
E	Tree #N/A	Snag, 20' NE of Tree #24635
E	Tree #N/A	Snag, 15' NW of Tree #24773
E	Tree #N/A	Snag, 5' SW of Tree #23727
E	Tree #23586	Snag
E	Tree #23647	Snag
E	Tree #23683	Snag
E	Tree #23686	Snag
E	Tree #23698	Snag
E	Tree #23841	Snag
E	Tree #23843	Snag
E	Tree #23855	Snag
E	Tree #23856	Snag
E	Tree #23880	Snag
E	Tree #24542	Snag
E	Tree #24639	Snag
E	Tree #24675	Snag
E	Tree #24805	Snag
E	Tree #24879	Snag
E	Tree #24944	Snag
E	Tree #25009	Snag
E	Tree #25016	Snag
E	Tree #25176	Snag



5300 Wellington Branch Drive • Suite 100  
Gainesville, Virginia 20155  
Phone: 703-679-5600 • Fax: 703-679-5601  
[www.wetlandstudies.com](http://www.wetlandstudies.com)



Exhibit 5:  
Wildlife Habitat Feature Location Map

Prepared For: Northern Virginia Stream Restoration, L.C.

The Glade - Reach 6  
Fairfax County, Virginia

Copyright © 2009 Wetland Studies and Solutions, Inc.

REVISIONS			
No.	Date	Description	App. By
DATE: January 2009		SCALE: 1" = 50'	

Horizontal Datum: VCS NAD83

Vertical Datum: NGVD 29

Boundary and Topo Source  
Fairfax County Digital Data

Design	Draft	Approved
JMB	JMB	MH

Sheet #  
4 of 4

Computer File Name:

1/200006200307eicHohent. Meet.Revch6 Revch6. HohentMet.dta