



**NORTHERN VIRGINIA STREAM RESTORATION BANK
APPEAL OF APRIL 21, 2009 DRB DECISION
SNAKEDEN BRANCH – REACH 13, TRIBUTARY 1
MAY 19, 2009**

**Presented by Michael S. Rolband
P.E., P.W.S., P.W.D.**

Wetland Studies and Solutions, Inc.
5300 Wellington Branch Drive · Suite 100 · Gainesville · Virginia 20155
www.wetlandstudies.com



SNAKEDEN REACH 13, TRIBUTARY 1

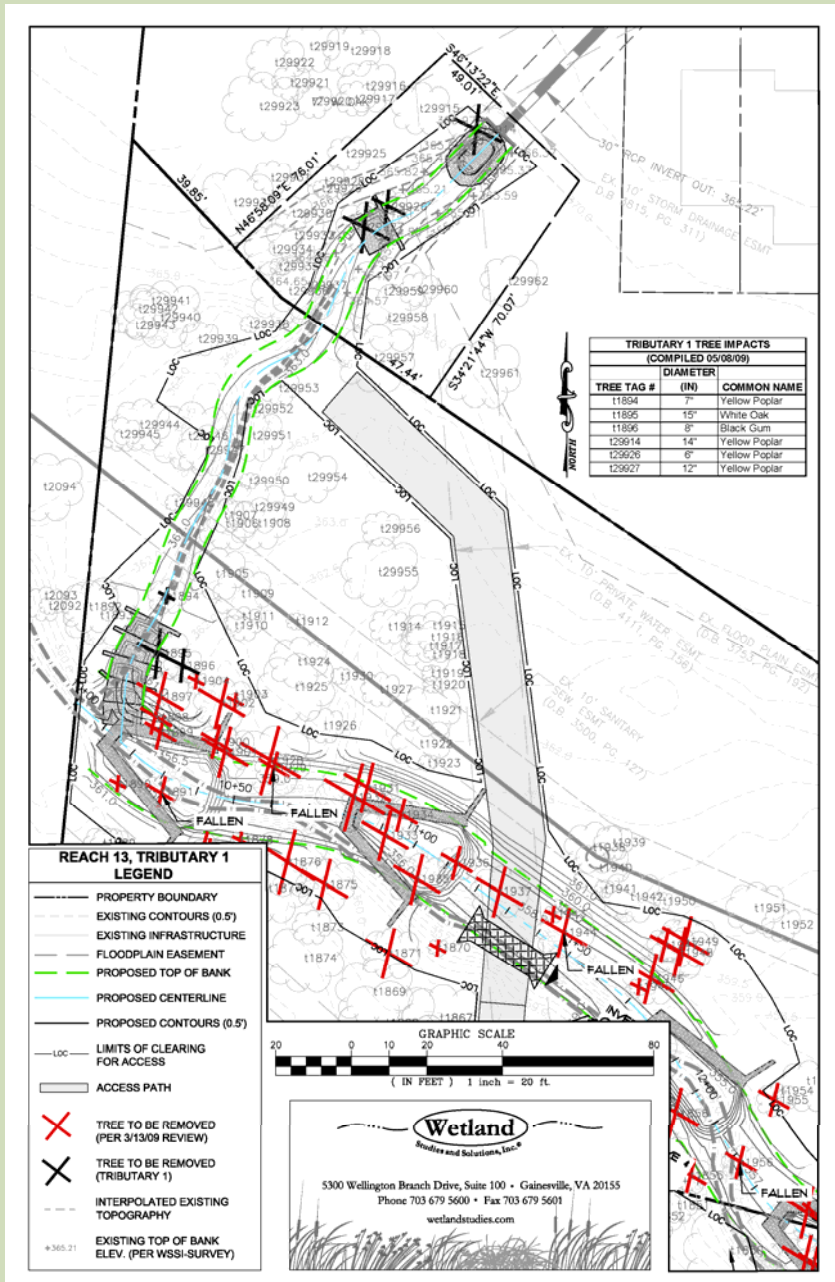
EXISTING CONDITIONS

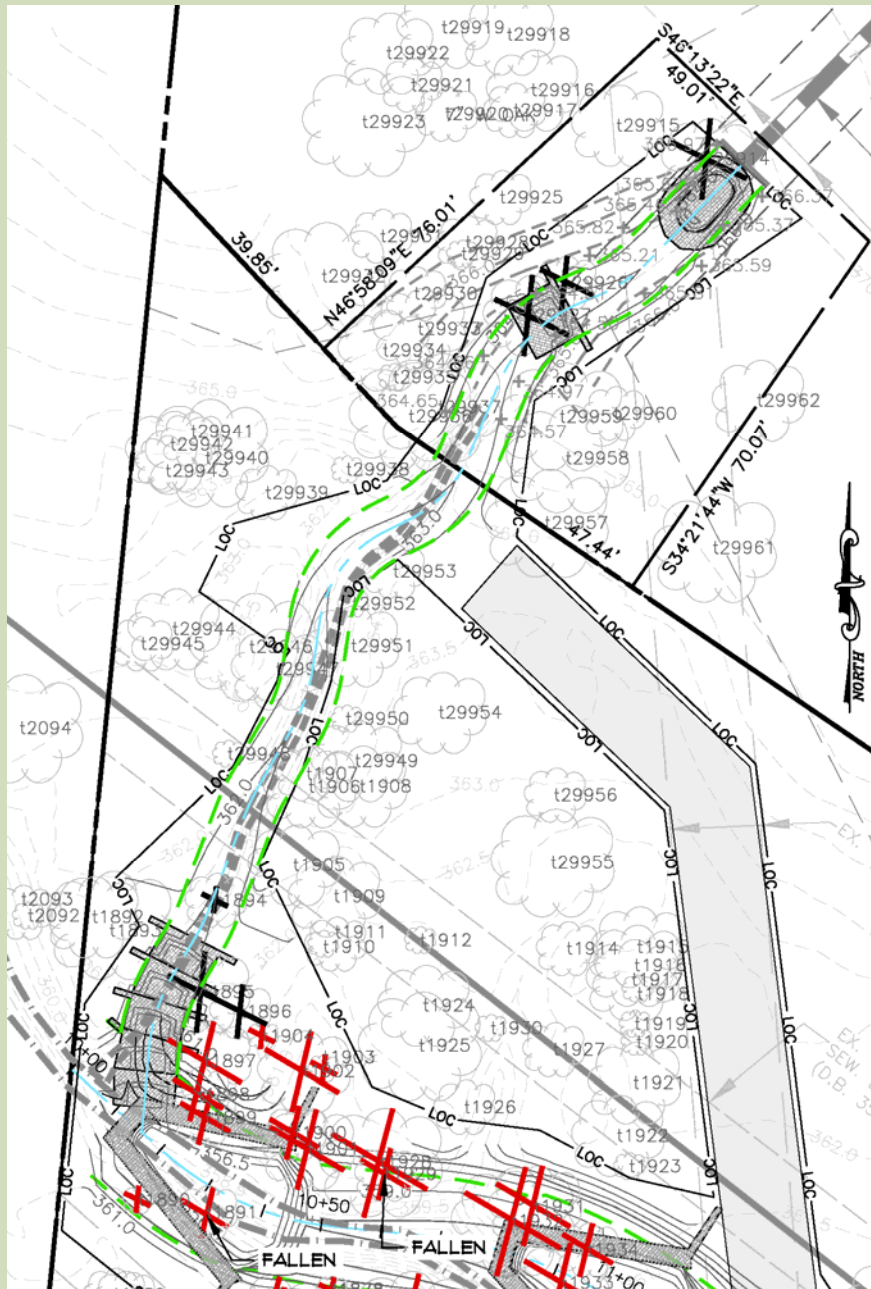
Looking upstream at Culvert Outfall



Looking upstream at half-way point







| TRIBUTARY 1 TREE IMPACTS (COMPILED 05/08/09) | | |
|---|------------------|---------------|
| TREE TAG # | DIAMETER (IN) | COMMON NAME |
| t1894 | 7" | Yellow Poplar |
| t1895 | 15" | White Oak |
| t1896 | 8" | Black Gum |
| t29914 | 14" | Yellow Poplar |
| t29926 | 6" | Yellow Poplar |
| t29927 | 12" | Yellow Poplar |

QUESTIONS?