



**NORTHERN VIRGINIA STREAM RESTORATION BANK
DRB MONTHLY STATUS REPORT - APRIL 21, 2009
SNAKEDEN BRANCH – REACH 13,
GLENCOURSE DRAINAGE IMPROVEMENT,
AND THE GLADE REACHES 4A & 4B**

**Presented by Michael S. Rolband
P.E., P.W.S., P.W.D.**

Wetland Studies and Solutions, Inc.
5300 Wellington Branch Drive · Suite 100 · Gainesville · Virginia 20155
www.wetlandstudies.com



MONTHLY STATUS REPORT

Snakeden Branch

- Reaches 1 - 12, 14 – 17: 100% complete.
- Reach 13 : DRB Final Plan modification review.

The Glade

- Reach 1: 95% complete.
- Reach 2: Cleared with stream construction starting.
- Reach 3: Cleared with stream construction starting.
- Reach 4: DRB preliminary plan review tonight.
- Reach 5: “Blank Slate” walk occurred on 4/18/09. First DRB meeting projected for 7/14/09.
- Reach 6: “Blank Slate” walk expected in June.

Colvin Run

- Met with Hillcrest on March 14, 2009.
- Reach 4 design team to move onto Colvin Run.

MONTHLY STATUS REPORT

SNAKEDEN REACH 12 AT SOAPSTONE



MONTHLY STATUS REPORT

SNAKEDEN NEAR NATURE HOUSE



MONTHLY STATUS REPORT

SNAKEDEN REACH 15



MONTHLY STATUS REPORT

SNAKEDEN REACH 16



MONTHLY STATUS REPORT

SNAKEDEN BRANCH - REACH 17



MONTHLY STATUS REPORT

GLADE REACH 1



MONTHLY STATUS REPORT

GLADE REACH 1A



MONTHLY STATUS REPORT

GLADE REACH 1 - CHAMBLISS



Before Construction

After Construction

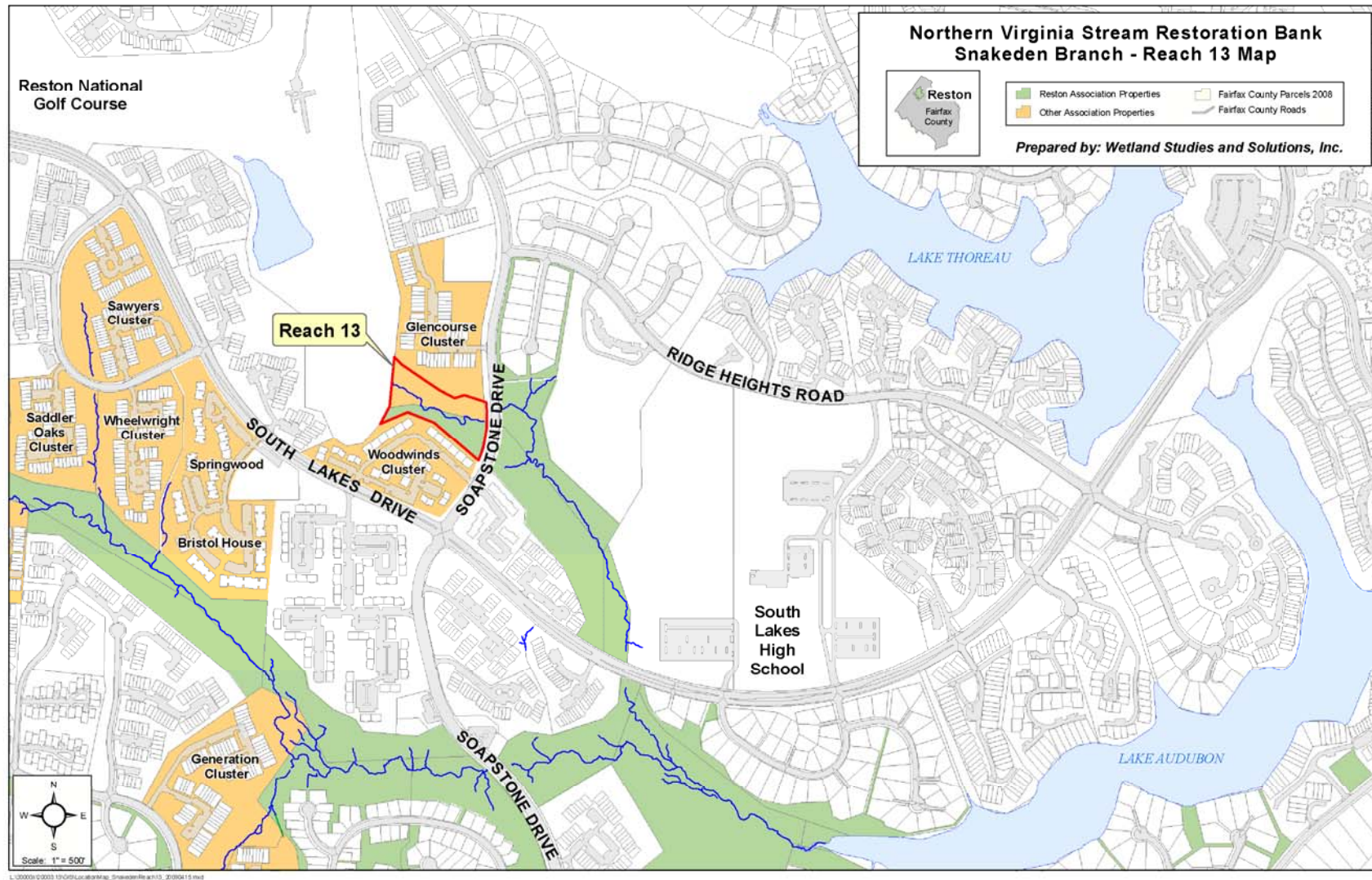


MONTHLY STATUS REPORT

GLADE REACH 1



SNAKEDEN BRANCH – REACH 13



SNAKEDEN BRANCH – REACH 13

MODIFICATION REQUEST

- Glencourse HOA signed easements on 6/20/07.
- Access to avoid guard rail and Tributary 1 required 2 new easements.
- Originally approved by DRB on 7/22/08.
- Modifications requested by Glencourse Cluster HOA
 - Relocate entrance
 - Move access to paved trail from sewer easement
 - Eliminate Tributary 1 from plan
- Had multiple meetings with Glencourse HOA Board and received approval.
- Met Woodwinds representatives and received support.

SNAKEDEN BRANCH – REACH 13

EXISTING CONDITIONS

Reach 13

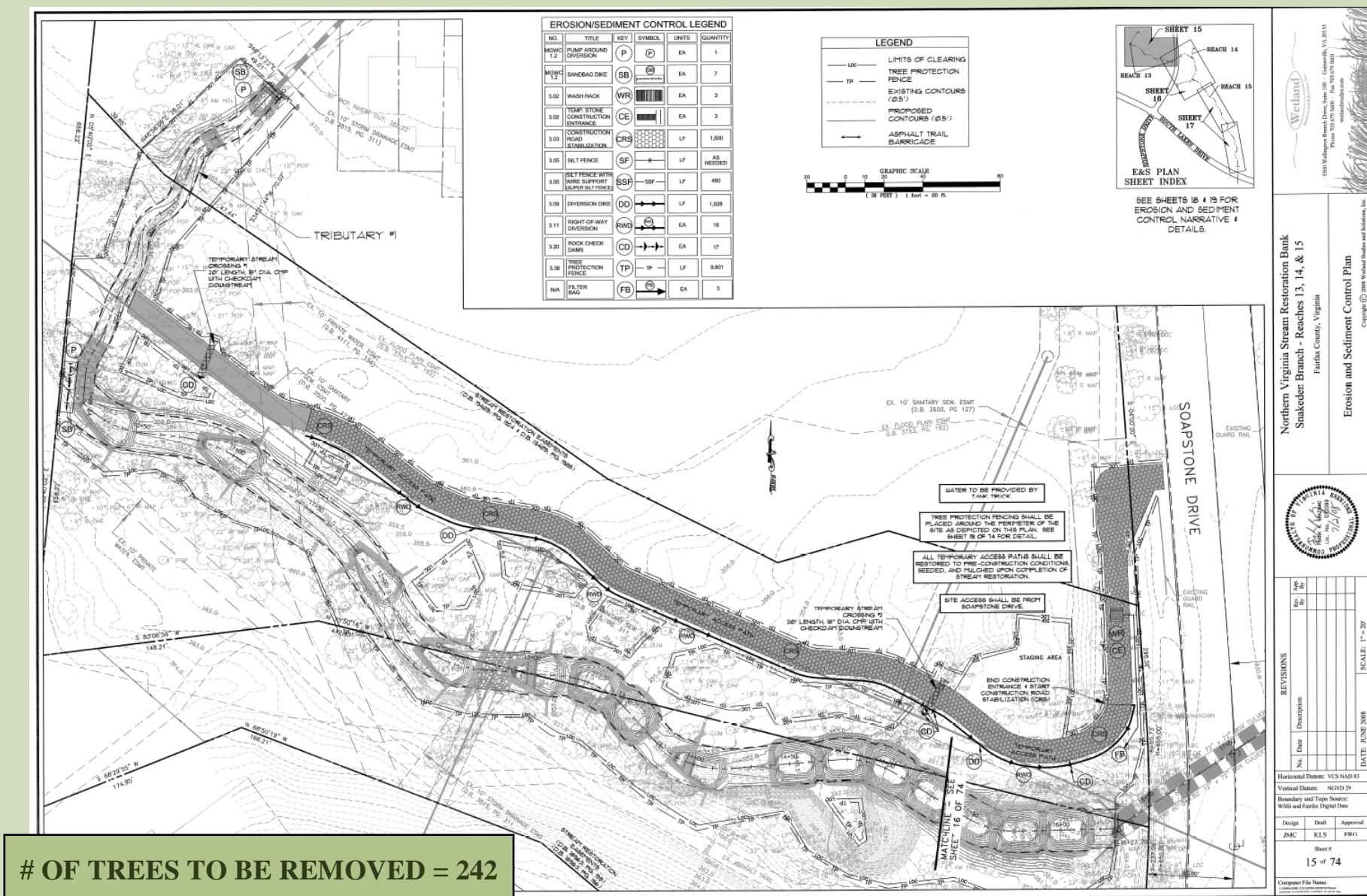


SNAKEDEN BRANCH – REACH 13

EXISTING CONDITIONS

Reach 13

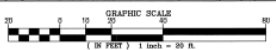
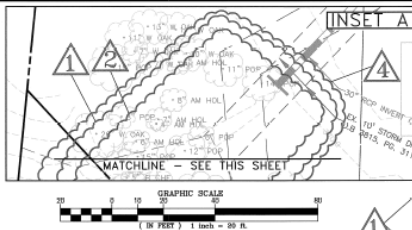
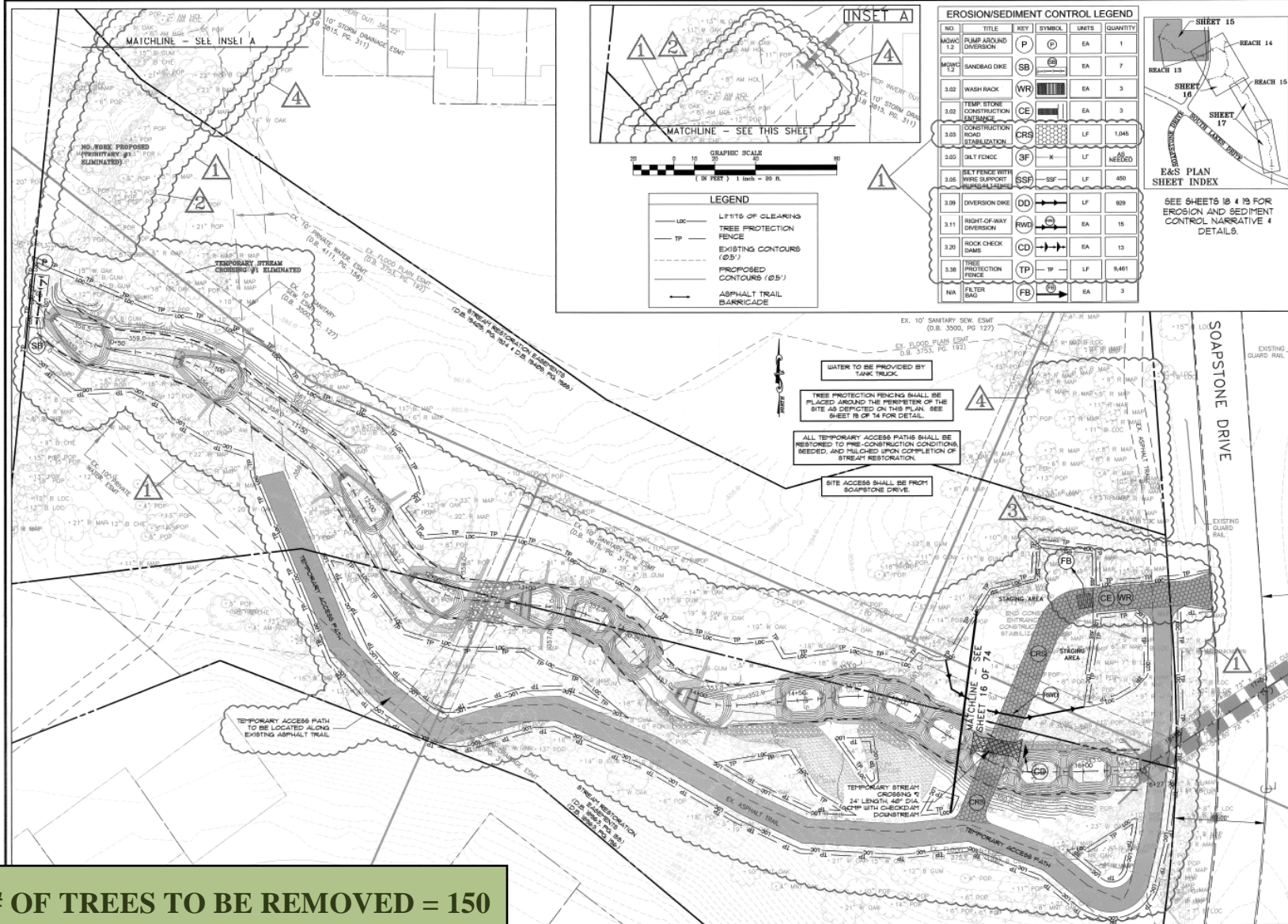




OF TREES TO BE REMOVED = 242

SNAKEDEN BRANCH – REACH 13 ORIGINAL PLAN



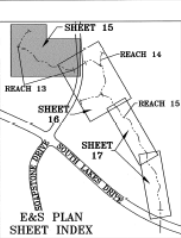


LEGEND

- LOC - LIMITS OF CLEARING
- TP - TREE PROTECTION FENCE
- — — — — EXISTING CONTOURS (25')
- — — — — PROPOSED CONTOURS (25')
- — — — — ASPHALT TRAIL BARRIAGE

EROSION/SEDIMENT CONTROL LEGEND

NO.	TITLE	KEY	SYMBOL	UNITS	QUANTITY
1.2	RAMP AROUND DIVERSION	P	(Symbol)	EA	1
1.3	SANDBAG DIKE	SB	(Symbol)	EA	7
3.02	WASH RACK	WR	(Symbol)	EA	3
3.02	TEMP STONE CONSTRUCTION ENTRANCE	CE	(Symbol)	EA	3
3.03	CONSTRUCTION ROAD STABILIZATION	CRS	(Symbol)	LF	1,045
3.02	DIKE FENCE	SF	(Symbol)	LF	NEEDED
3.05	SET FENCE WITH WIRE SUPPORT	SSP	(Symbol)	LF	450
3.09	DIVERSION DIKE	DD	(Symbol)	LF	625
3.11	RIGHT-OF-WAY DIVERSION	RWD	(Symbol)	EA	15
3.20	ROCK CHECK DAMS	CD	(Symbol)	EA	13
3.30	TREE PROTECTION FENCE	TP	(Symbol)	LF	9,461
NA	FILTER MAT	FB	(Symbol)	EA	3



SEE SHEETS 13, 14, & 15 FOR EROSION AND SEDIMENT CONTROL NARRATIVE & DETAILS.

WATER TO BE PROVIDED BY TANK TRUCK.

TREE PROTECTION FENCING SHALL BE PLACED AROUND THE PERIMETER OF THE SITE AS SHOWN ON THIS PLAN. SEE SHEET 15 OF 14 FOR DETAIL.

ALL TEMPORARY ACCESS PATHS SHALL BE RESTORED TO PRE-CONSTRUCTION CONDITIONS, SEED, AND MULCH UPON COMPLETION OF STREAM RESTORATION.

SITE ACCESS SHALL BE FROM SOAPSTONE DRIVE.

OF TREES TO BE REMOVED = 150

SNAKEDEN BRANCH – REACH 13 CURRENT PLAN

3000 Wetland Studies and Solutions, Inc. - Copyright, VA, 2010
www.wetlandstudies.com

Northern Virginia Stream Restoration Bank
Snakeden Branch - Reaches 13, 14, & 15
Fairfax County, Virginia

Erosion and Sediment Control Plan

REVISIONS

No.	Date	Description	Rev. By	App. By
1	1/20/08	DESIGNED FOR FLOOD ASSESSMENT	JAC	FRG
2	1/20/08	ELIMINATED TEMPORARY 1. RESTORATION	JAC	FRG
3	1/20/08	SHIFTED CONSTRUCTION ENTRANCE	JAC	FRG
4	1/20/08	PLAN REVISED, EASEMENT NOT NEEDED	JAC	FRG

Horizontal Datum: NAD 83
Vertical Datum: NGVD 29
Boundary and Topo Source: WMS and Fairfax Digital Data

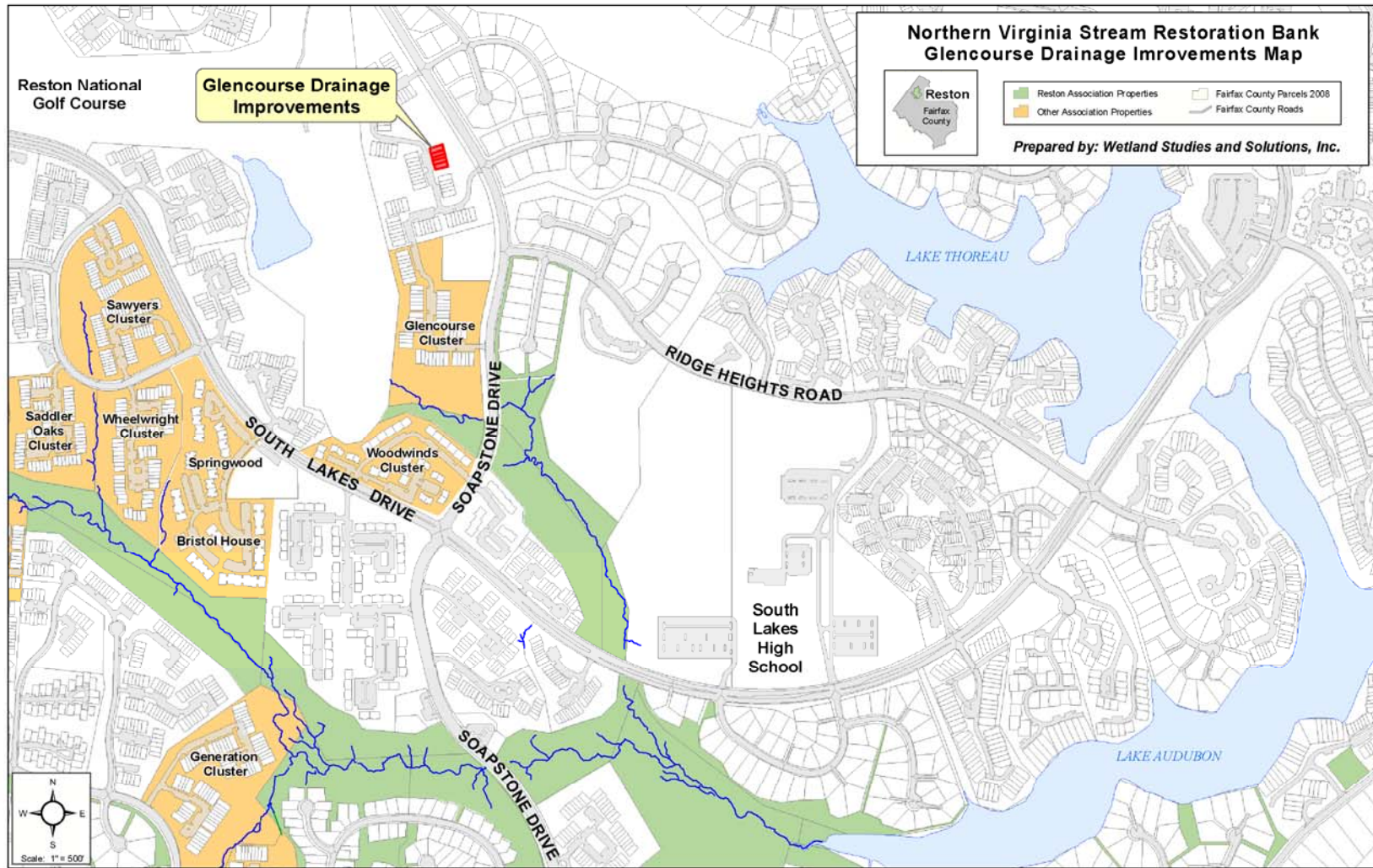
Design	Draft	Approved
JAC	KLS	FRG

Sheet #
15 of 74

Computer File Name:
D:\Projects\2008\0806\Snakeden Branch\Snakeden Branch.dwg

DATE: JUNE 2008
SCALE: 1" = 20'

GLENCOURSE DRAINAGE IMPROVEMENT (2043 – 2051 WINGED FOOT CT)



FRENCH DRAIN DETAIL
(TYPICAL - NOT TO SCALE)



1) THE CONTRACTOR SHALL NOTIFY "MISS UTILITY" (1-800-252-7777) 48 HOURS PRIOR TO START OF ANY EXCAVATION OR CONSTRUCTION, FOR THE MARKING OF UNDERGROUND UTILITIES. THE EXISTING UNDERGROUND UTILITIES SHOWN HEREON (SHEETS 100-101) ARE TO BE PRESERVED. THE CONTRACTOR SHALL BE RESPONSIBLE FOR DETERMINING THE EXACT LOCATION OF ALL UTILITIES (WITH THE DIGGING OF TEST HOLES) AND SHALL BE RESPONSIBLE FOR PROTECTING ALL UTILITIES. THE CONTRACTOR SHALL BE RESPONSIBLE FOR PRESERVING THEIR UNDERGROUND UTILITIES.

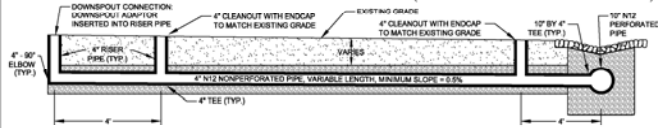
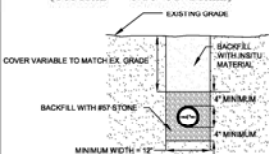
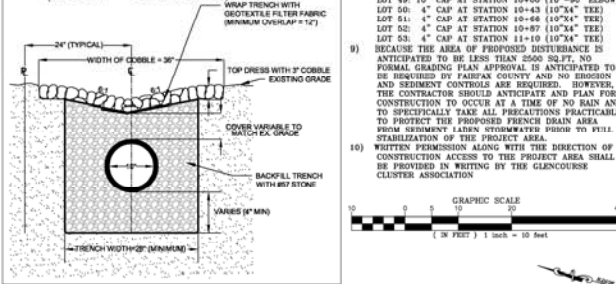
2) FOR ANY UTILITIES FOUND TO BE IN CONFLICT WITH THE CONSTRUCTION, THE CONTRACTOR SHALL NOTIFY WETLAND STUDIES AND SOLUTIONS, INC. IMMEDIATELY FOR RESOLUTION. BECAUSE NO WATERLINE OR SANITARY SEWER CROSSINGS ARE TO BE PERMITTED, THE CONTRACTOR SHALL BE RESPONSIBLE FOR OBTAINING THE NECESSARY "RE-ALIGNMENT/ ELEVATION ADJUSTMENT" (BY HAND) OF THE APPLICABLE UTILITY LINE ALONG THE SUBJECT 4', 10" & 12" MAIN LINE & A MINOR RE-ALIGNMENT/ELEVATION ADJUSTMENT" (BY HAND) OF THE APPLICABLE UTILITY LINE IN COMBINATION WITH THE INCREASED DEPTH OF THE EXISTING UTILITY.

3) THE CONTRACTOR SHALL BE RESPONSIBLE FOR THE ULTIMATE INSTALLATION OF IMPROVEMENTS WITHOUT DISRUPTION OF SERVICE TO THE EXISTING UTILITY. THE CONTRACTOR SHALL BE RESPONSIBLE FOR THE PROTECTION OF ALL UTILITIES.

4) IN ADVANCE OF ITS SCHEDULED PLACEMENT, THE CONTRACTOR SHALL PROVIDE SPECIFICATIONS AND DETAILS FOR SOURCE OF MATERIALS TO BE USED FOR THE PROPOSED IMPROVEMENTS. THE CONTRACTOR SHALL BE RESPONSIBLE FOR OBTAINING ALL NECESSARY GLENNCOUSE COUNTY APPROVALS PRIOR TO ITS PLACEMENT BY THE CONTRACTOR.

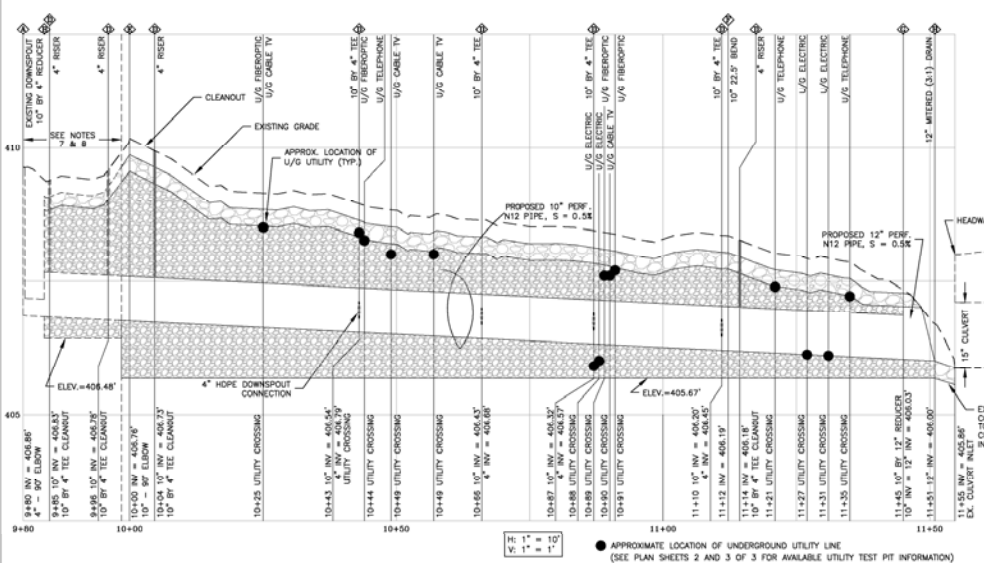
5) THE LOCATION OF AND THE DEPTH OF ANY EXISTING UTILITY SHALL BE VERIFIED BY THE CONTRACTOR. ANY UTILITY ACTIVITY SHALL BE STABILIZED BY THE CONTRACTOR IN ACCORDANCE WITH SKEWING SPECIFICATION AS ESTABLISHED BY THE VIRGINIA EROSION AND SEDIMENT CONTROL, FINAL (PERMANENT SEEDING) SCHEDULE.

6) THE LOCATION OF ANY EXISTING UTILITY, HOMEOWNER, EXISTING DOWNSPUTS TO BE CONNECTED TO THE PROPOSED PERMANENT IMPROVEMENTS SHALL BE VERIFIED BY THE CONTRACTOR.



- 1) THE SYSTEM WAS DESIGNED TO HANDLE THE 100-YR EVENT USING THE RATIONAL METHOD: $Q = 1.25CIA$
- 2) RAINFALL INTENSITY, I , WAS DETERMINED USING A 10-MINUTE TIME OF CONCENTRATION AND THE INTENSITY DURATION FREQUENCY CURVES PROVIDED IN THE FAIRFAX COUNTY PUBLIC FACILITIES MANUAL (PFM) (PLATE 3-6)
- 3) RUNOFF COEFFICIENTS, C , WERE DETERMINED BASED ON EXISTING LAND USE

2) MANNING'S ROUGHNESS COEFFICIENTS, n , PROVIDED BY ADVANCED DRAINAGE SYSTEMS, INC.



Computer File Name:
L:\COMM\2002-2003\2002-2003.DOC

GLENCOURSE DRAINAGE IMPROVEMENT FRENCH DRAIN COVER ROCKS



THE GLADE – REACH 4

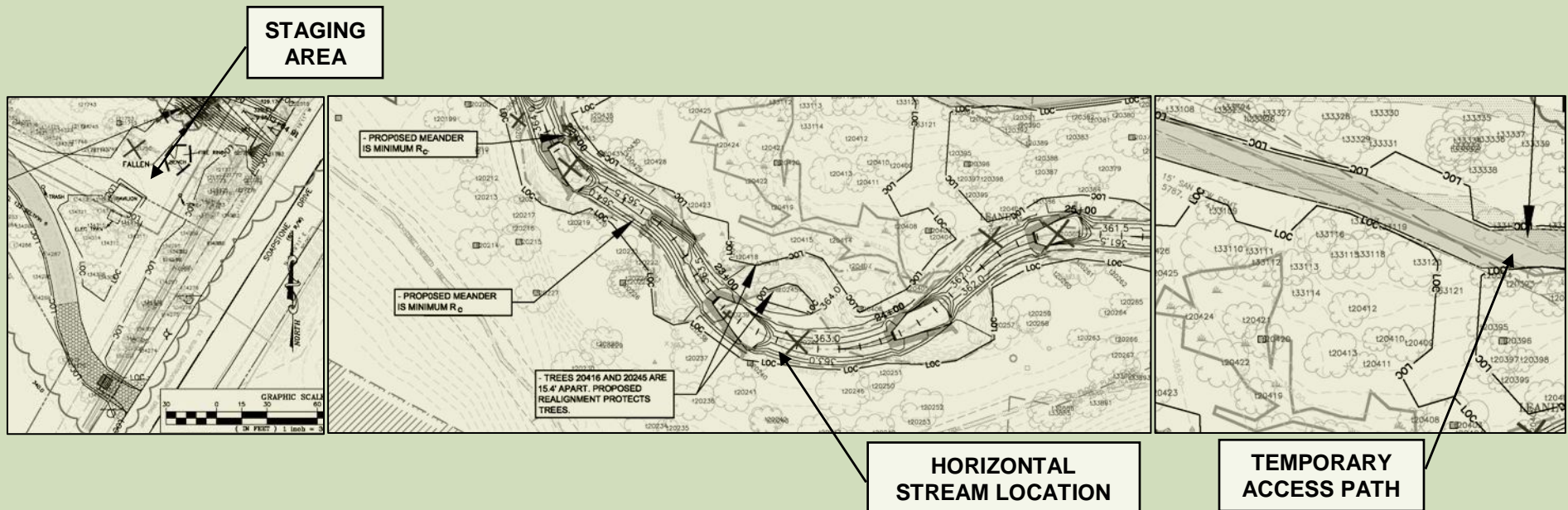


Wetland Studies and Solutions, Inc.

THE GLADE – REACH 4

PURPOSE OF PRELIMINARY PLAN

1. To decide upon staging locations, size, temporary access path location, and methods.
2. To determine horizontal stream location and grading of stream restoration resulting in limit of clearing (loc) and tree impact.

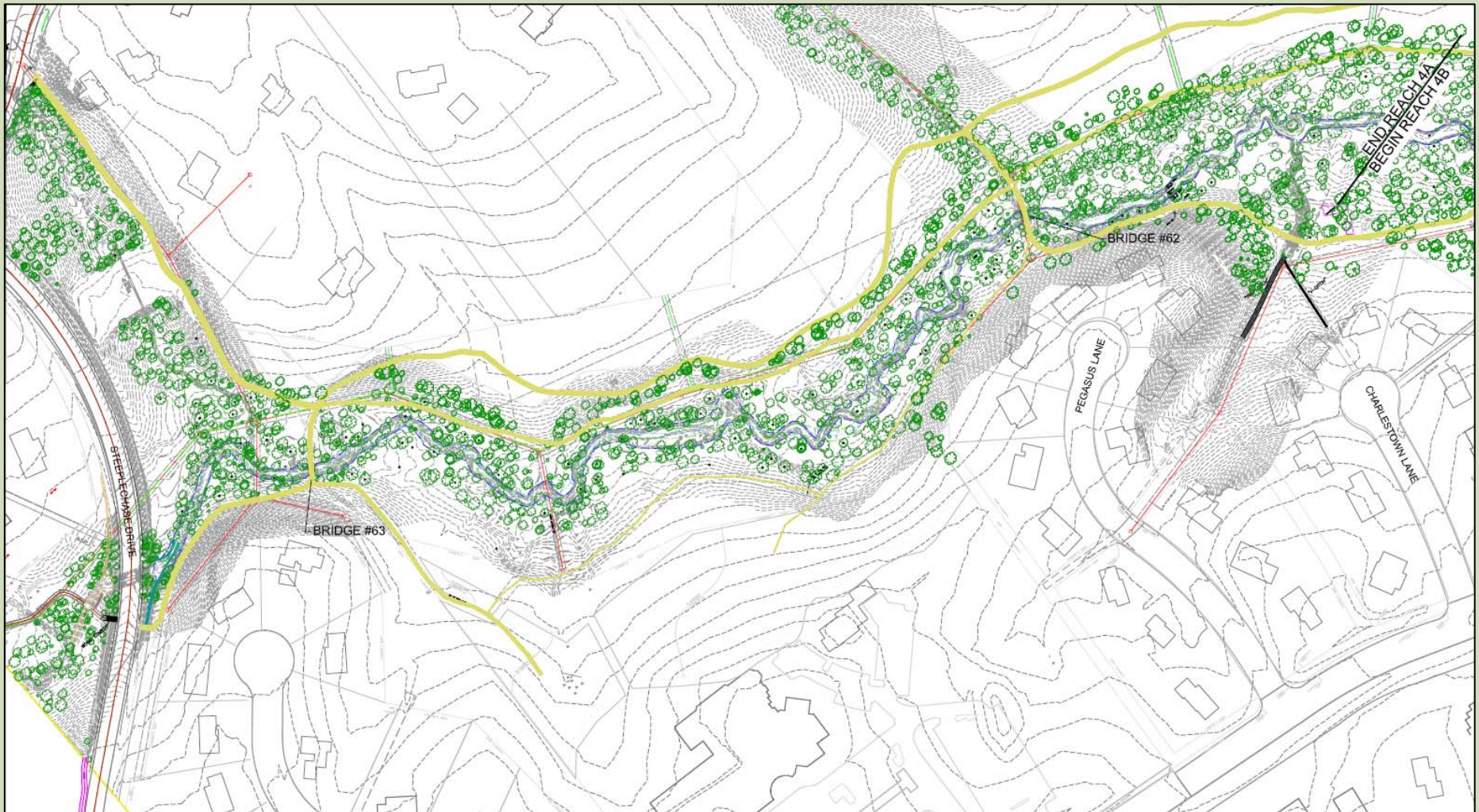


THE GLADE REACH 4 COMMUNITY OUTREACH SCHEDULE

REACH 4 COMMUNITY EVENTS

January 21 – Wednesday	9:00 – Noon	First Small Group Meeting on Reaches 4A and 4B to Discuss Staging, Access, and Horizontal Stream Alignment
February 17 – Tuesday	9:00 – Noon	Second Small Group Meeting on Reaches 4A and 4B to Discuss Staging, Access, and Horizontal Stream Alignment
March 7 – Saturday	9:00 – 2:00 PM	Community-wide Meeting on Reaches 4A and 4B for Preliminary Plan Review – Pavilion
March 9 – Monday	5:00 PM	Post Preliminary Plan (Reaches 4A and 4B) Presented on March 7 on Web Site
March 25 – Wednesday	5:00 PM	Post 1 st Preliminary Plan Revision Set (Reaches 4A and 4B) on Web Site
March 28 – Saturday	9:00 AM – Noon	Second Community-wide Meeting on Reaches 4A and 4B for Preliminary Plan Review – Pavilion
	Noon – 2:00 PM	Lunch and Q&A Session
April 2 – Thursday	5:00 PM	Post 2 nd Preliminary Plan Revision Set (Reaches 4A and 4B) on Web Site
April 7 – Tuesday	5:00 PM	Post 3 rd Preliminary Plan Revision Set (Reach 4B; no revisions were made to 4A) on Web Site
April 21 – Tuesday	7:00 PM	DRB – Reach 4 Preliminary Plan Review
May 9 – Saturday	9:00 – 2:00 PM	First Community-wide Meeting on Reach 4 Final Plan Pavilion
May 11 – Monday	N/A	Post Draft Final Plans on Web Site
May 30 – Saturday	9:00 AM – Noon	Second Final Plan Review for Reach 4 – Pavilion
	Noon – 2:00 PM	Lunch and Q&A Session
June 9 – Tuesday	N/A	Post Any Revisions to Final Plan on Web Site
June 16 – Tuesday	7:00 PM	DRB Review of Reach 4 Final Plan

THE GLADE – REACH 4A EXISTING CONDITIONS



STAGING AREA - THE GLADE REACH 4A

Reach 4A



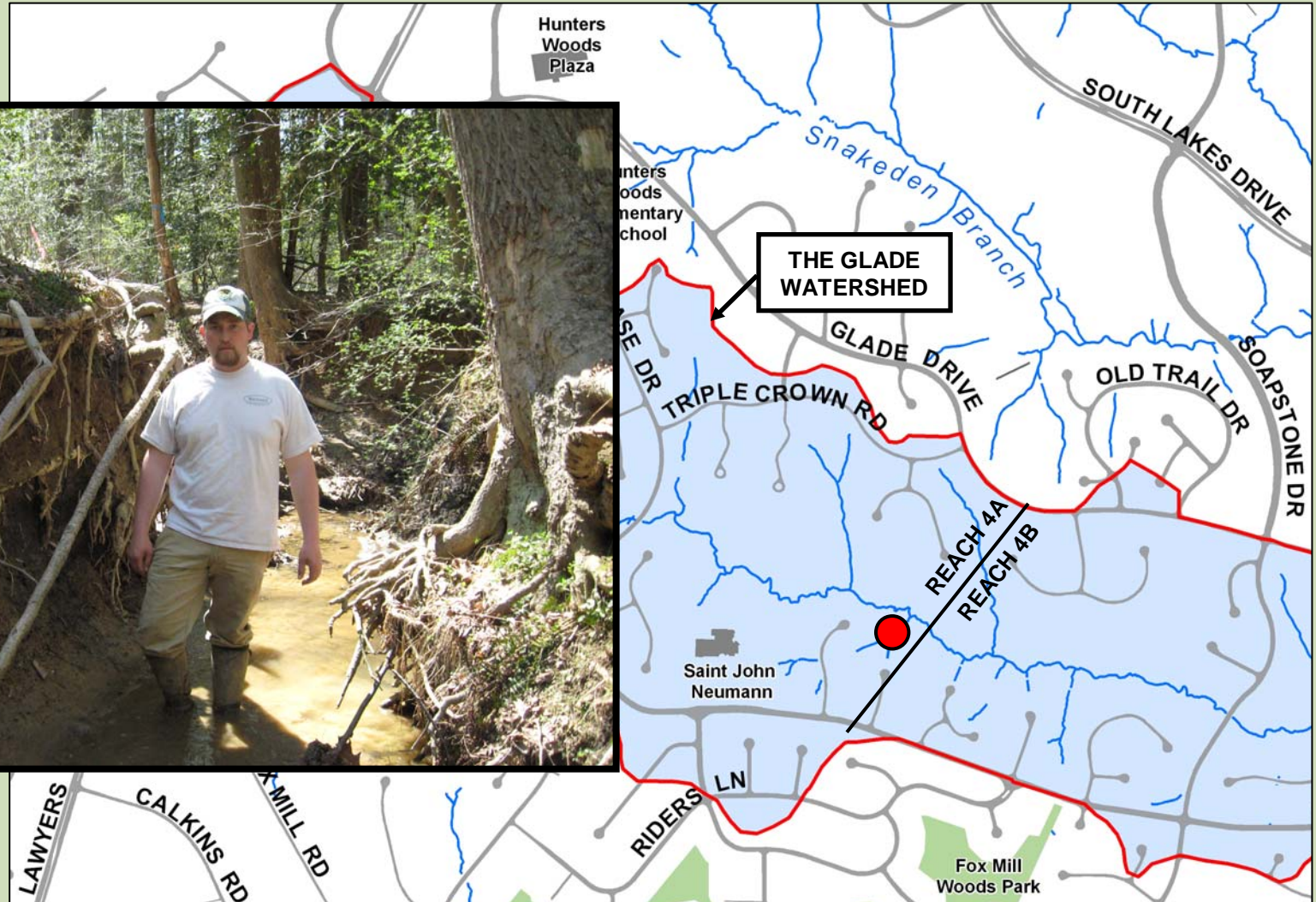
EXISTING SANITARY SEWER EASEMENT / ACCESS PATH THE GLADE REACH 4A

Reach 4A



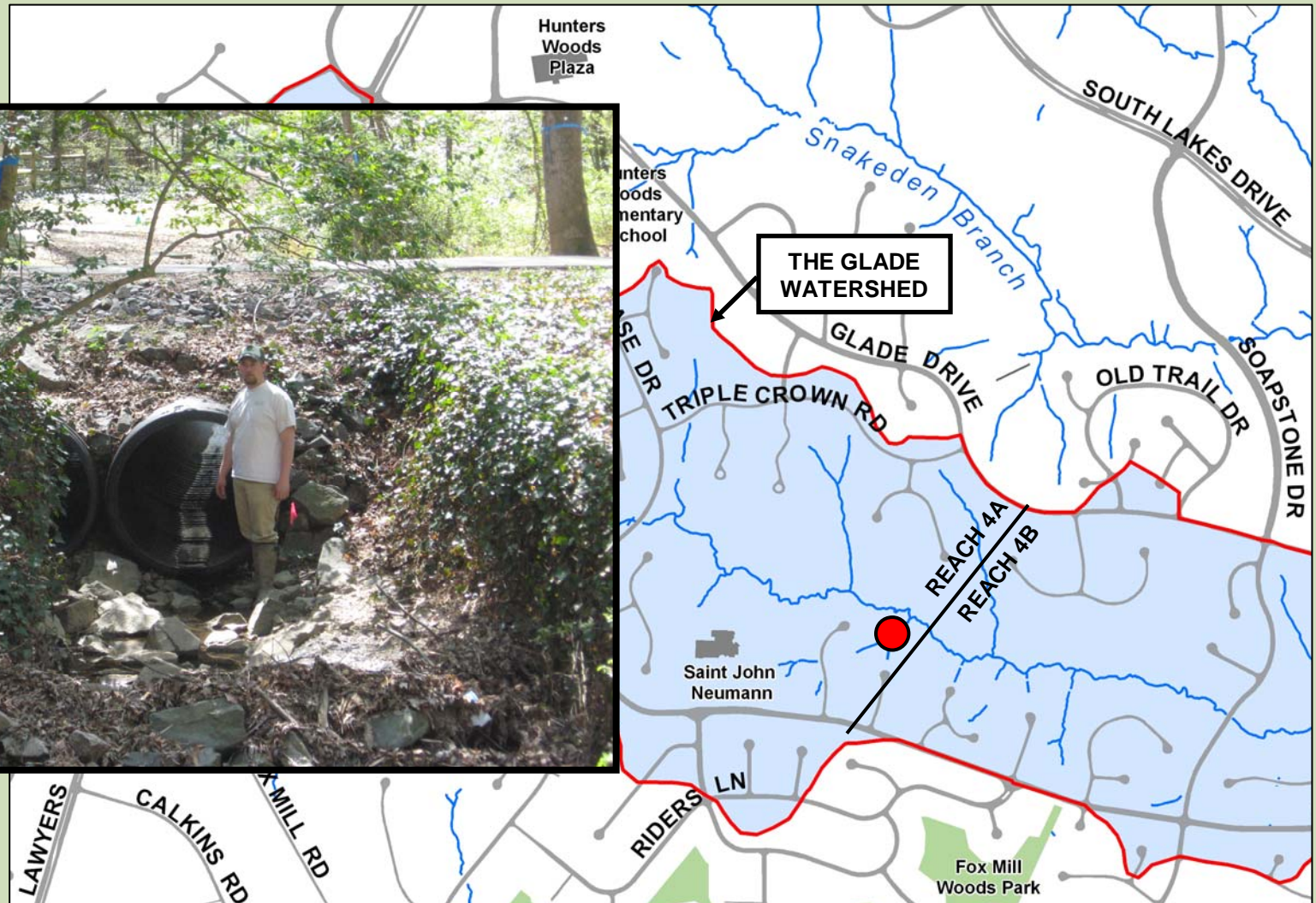
EXISTING CONDITIONS - THE GLADE REACH 4A

Church Trib



EXISTING CONDITIONS - THE GLADE REACH 4A

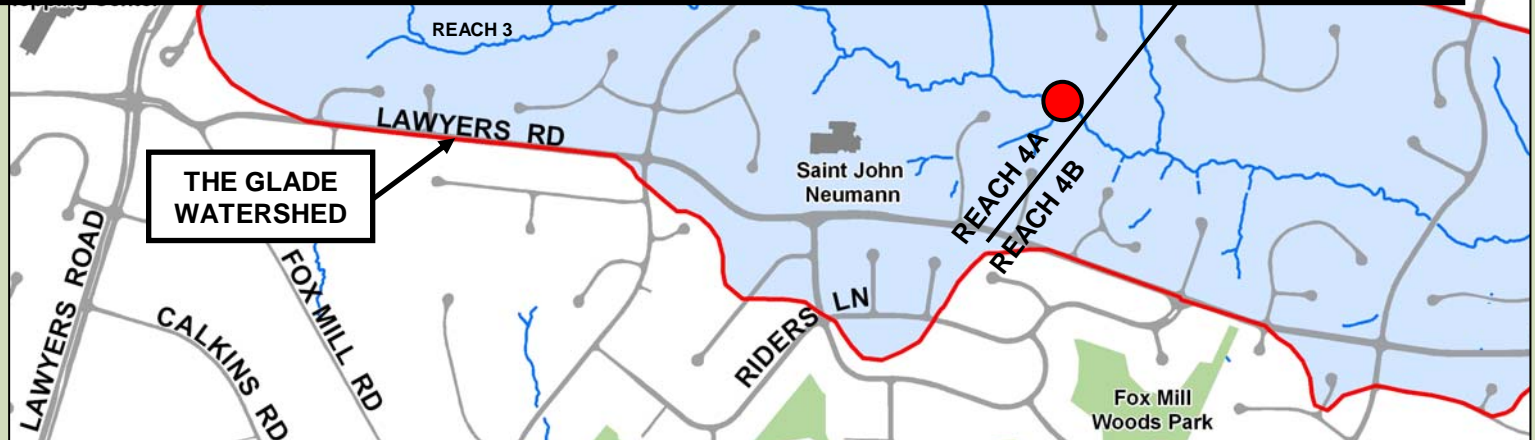
Church Trib



EXISTING CONDITIONS - THE GLADE REACH 4A

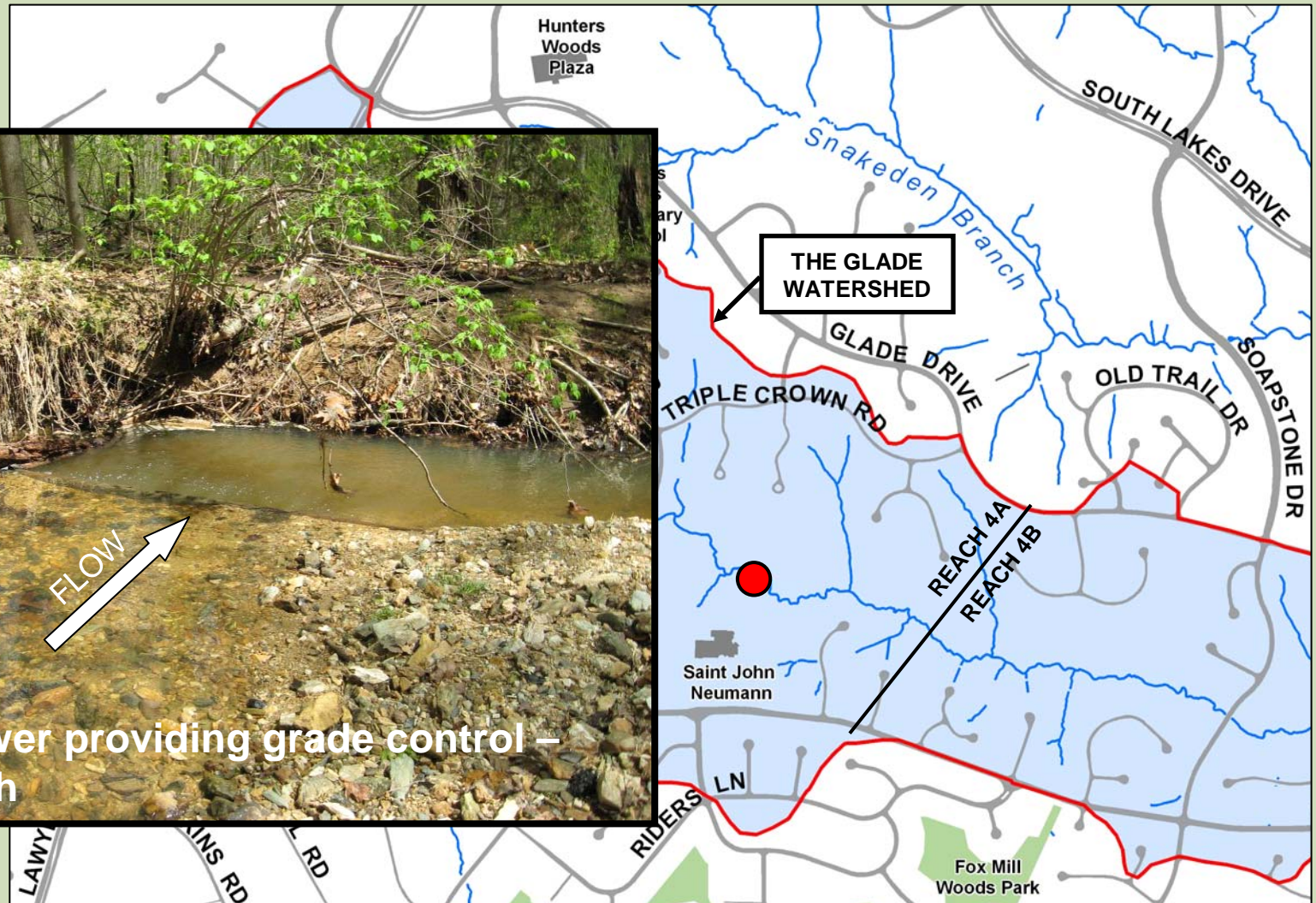
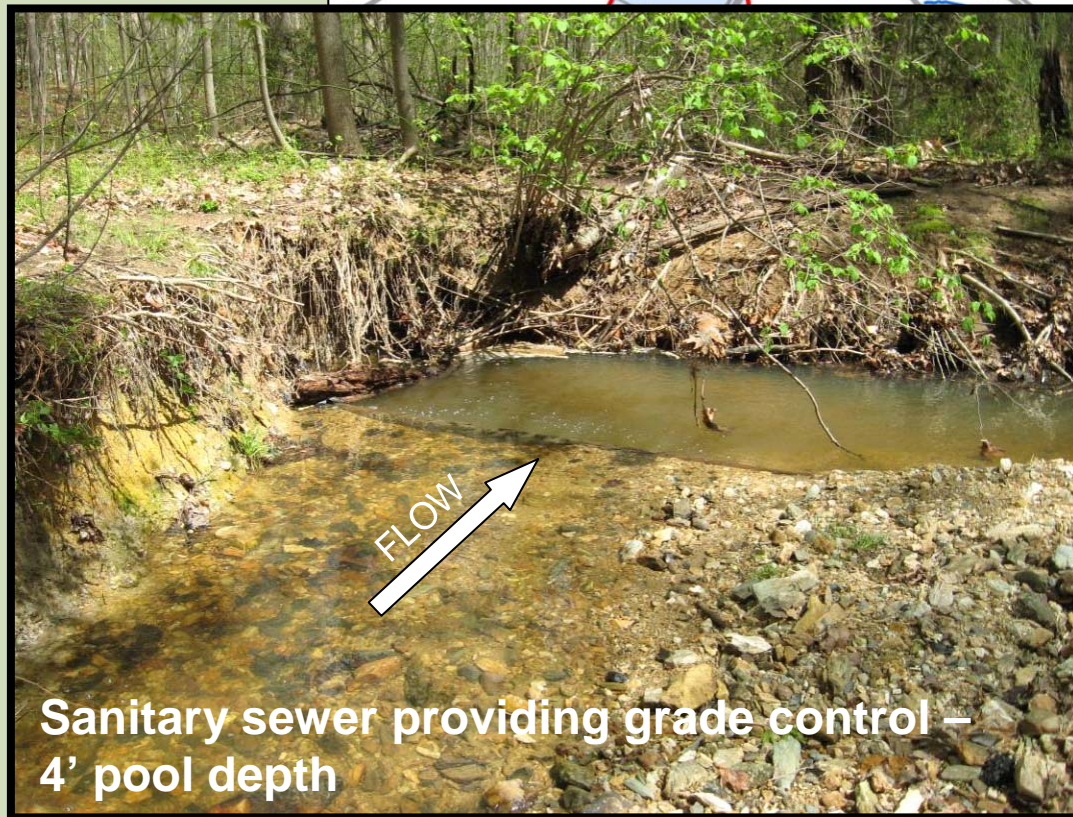


Reach 4A



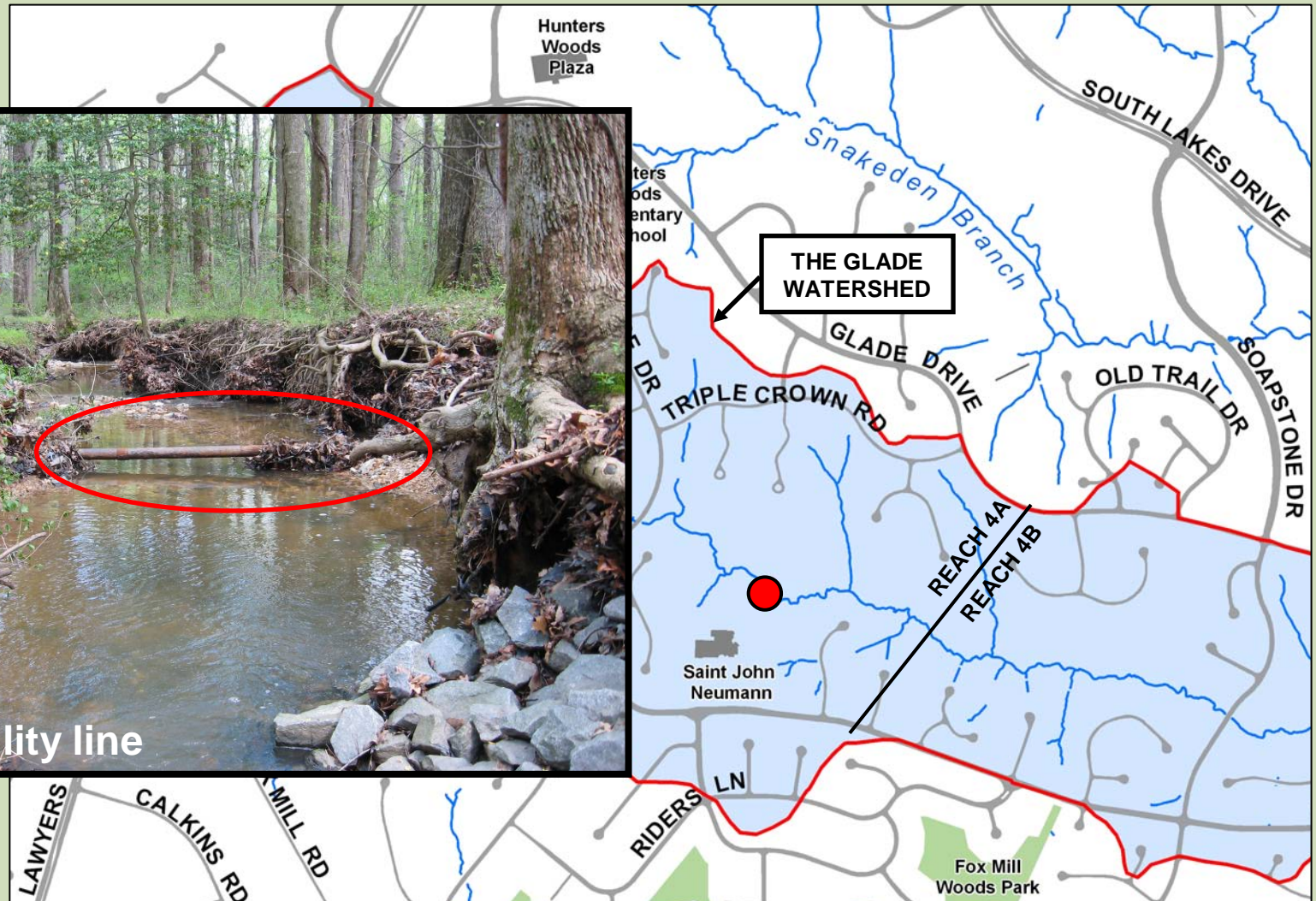
EXISTING CONDITIONS - THE GLADE REACH 4A

Reach 4A



EXISTING CONDITIONS - THE GLADE REACH 4A

Reach 4A



ACCESS ROAD DECK MAT

ACCESS ROAD DECK MAT NOT TO SCALE

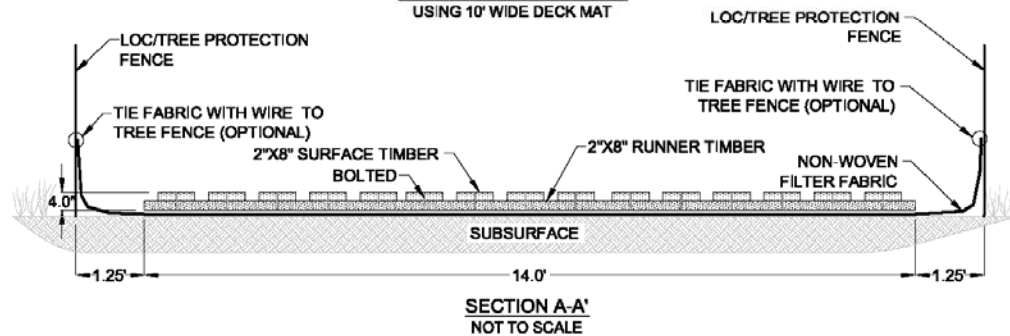


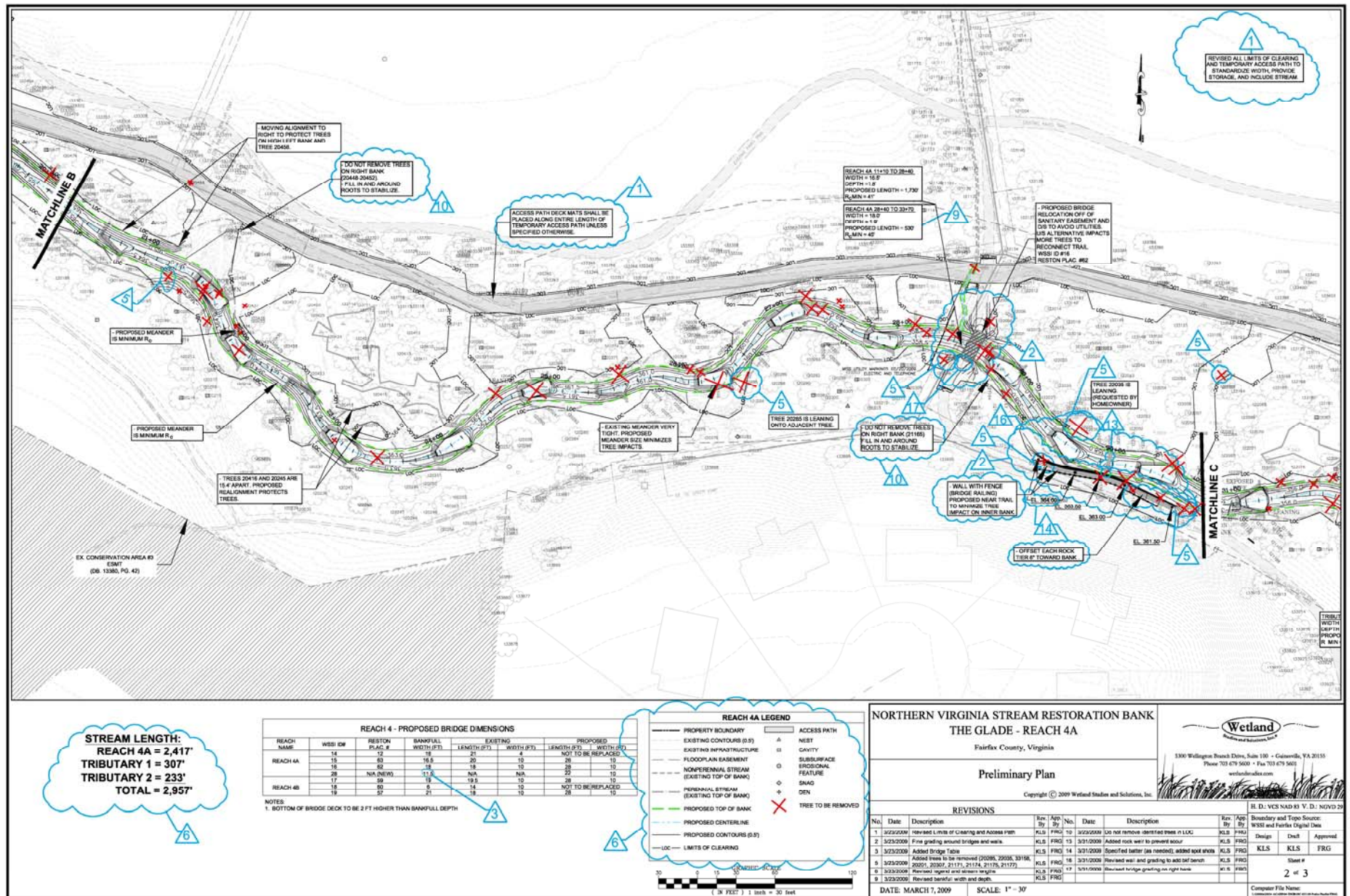
NOTES:

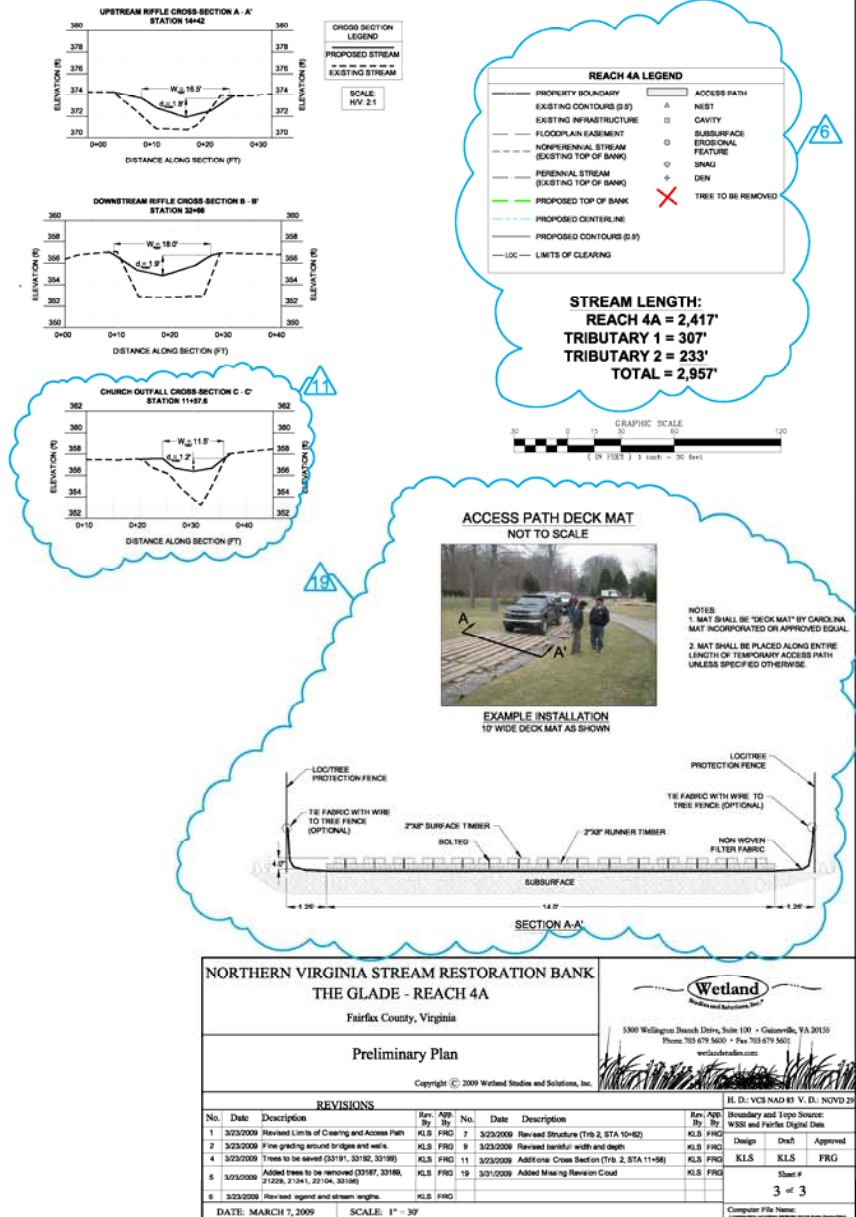
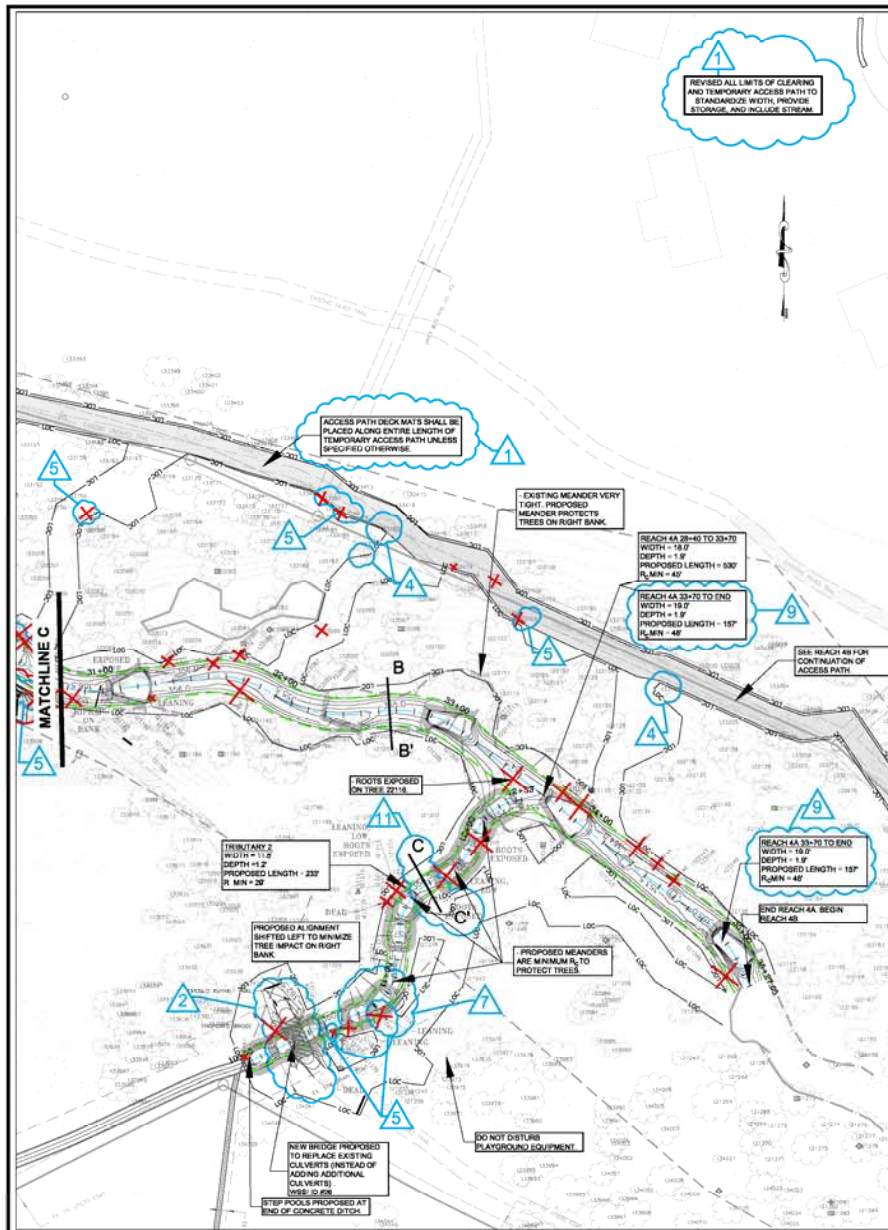
1. MAT SHALL BE "DECK MAT" BY CAROLINA MAT INCORPORATED OR APPROVED EQUAL.

2. MATS SHALL BE INSTALLED SUCH THAT THE SURFACE TIMBER RUNS PARALLEL WITH THE VEHICLE TREAD. SUBSEQUENT MATS SHALL BE INSTALLED SUCH THAT THEY BUTT UP AGAINST EACH OTHER.

EXAMPLE INSTALLATION USING 10' WIDE DECK MAT



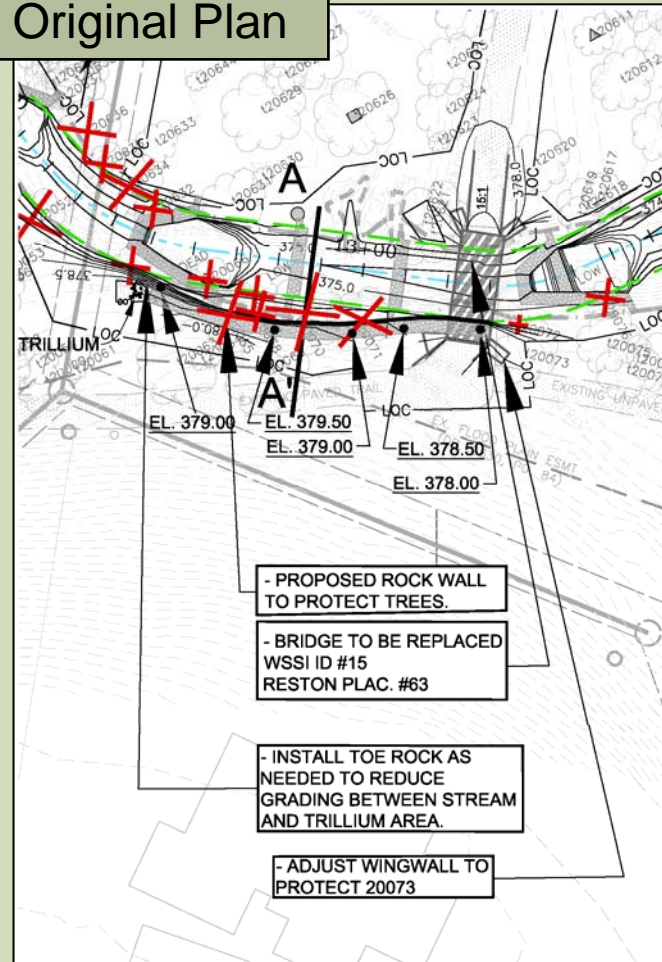




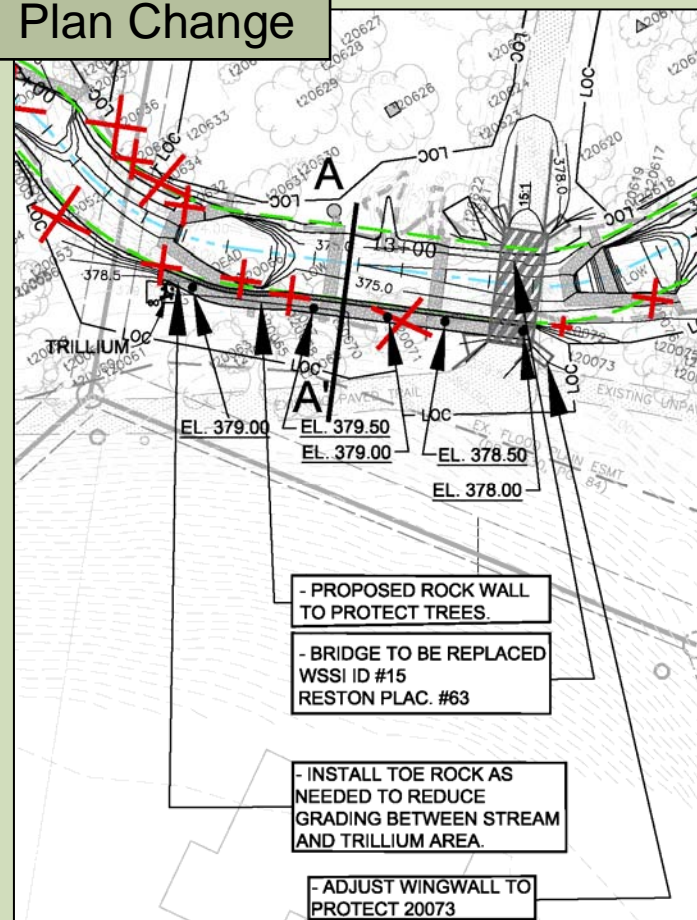
THE GLADE REACH 4A

CHANGE STATION 12+45 TO 13+30

Original Plan



Plan Change

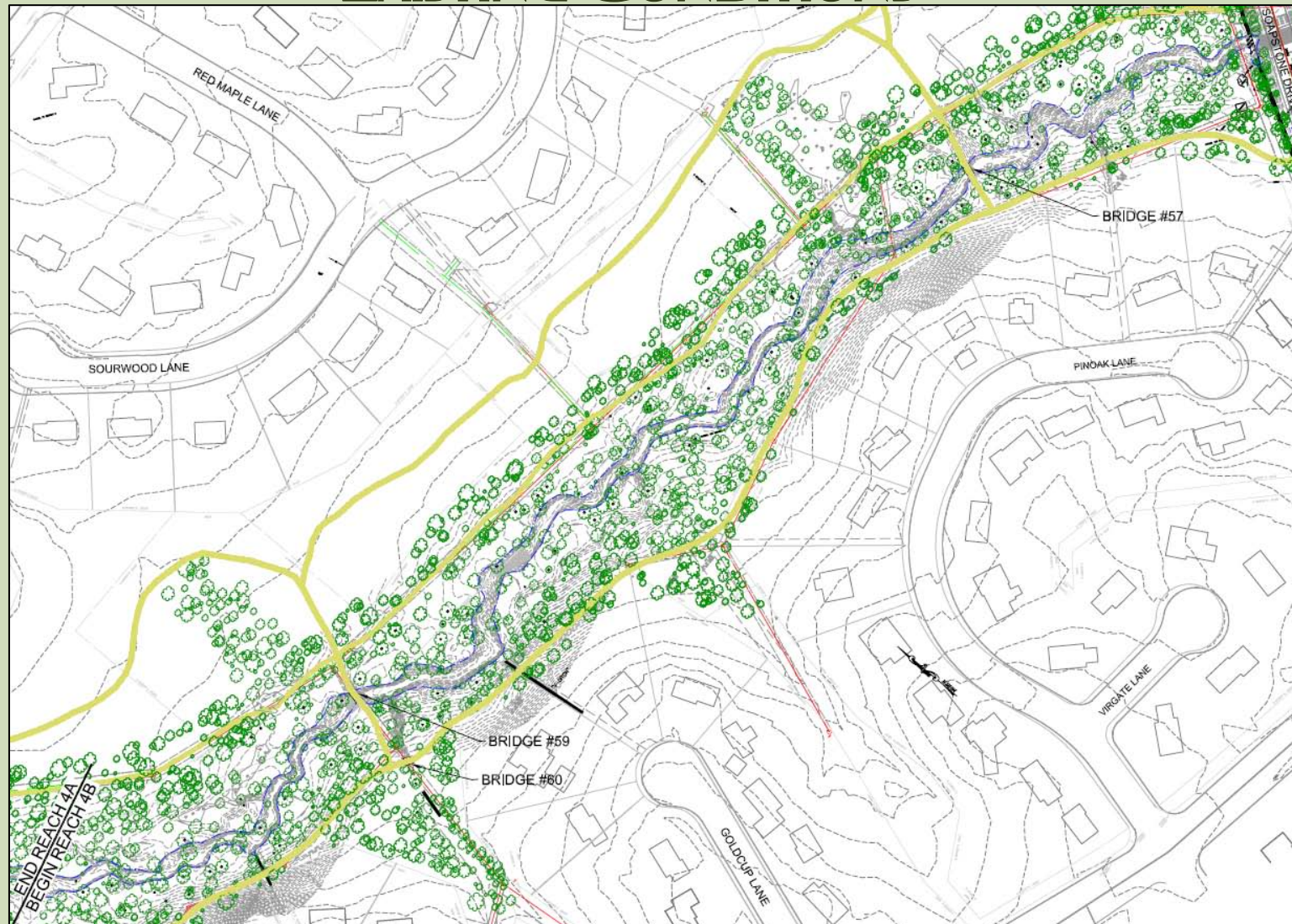


Trees Saved:

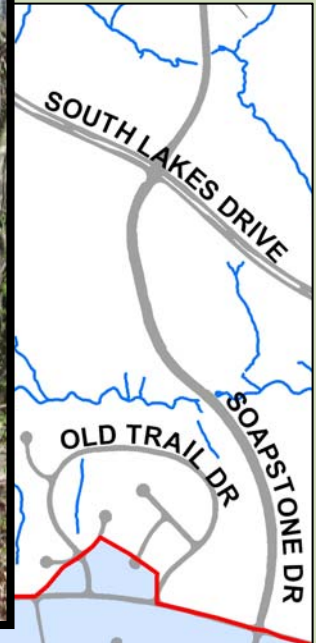
1. t20065 (11" Yellow Poplar)
2. t20068 (9" Mountain Chestnut Oak)
3. t20070 (24" Yellow Poplar)

THE GLADE – REACH 4B

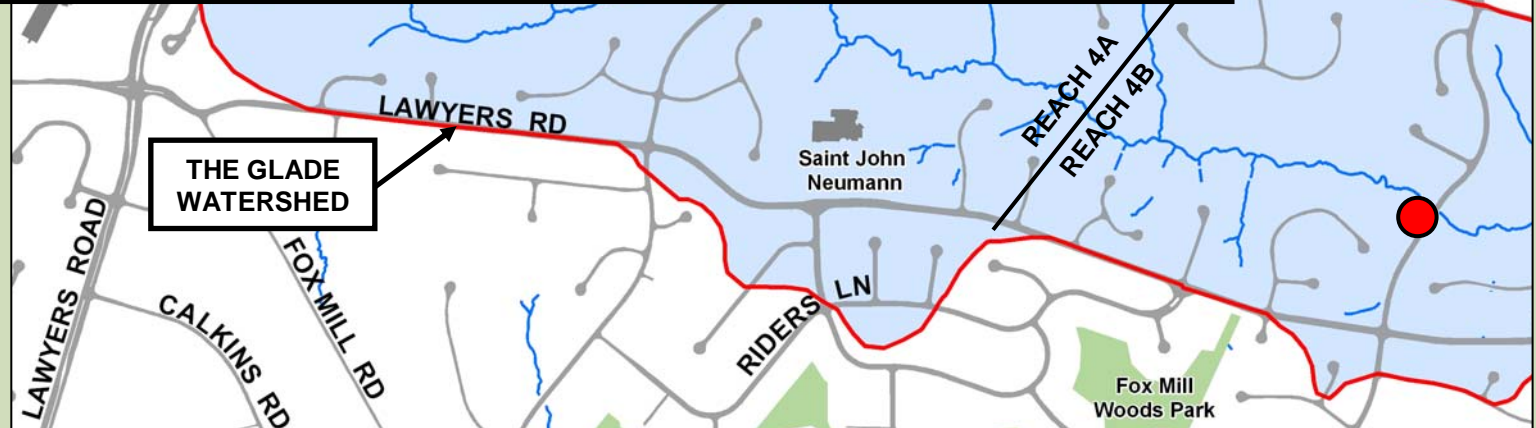
EXISTING CONDITIONS



STAGING AREA - THE GLADE REACH 4B



Reach 4B



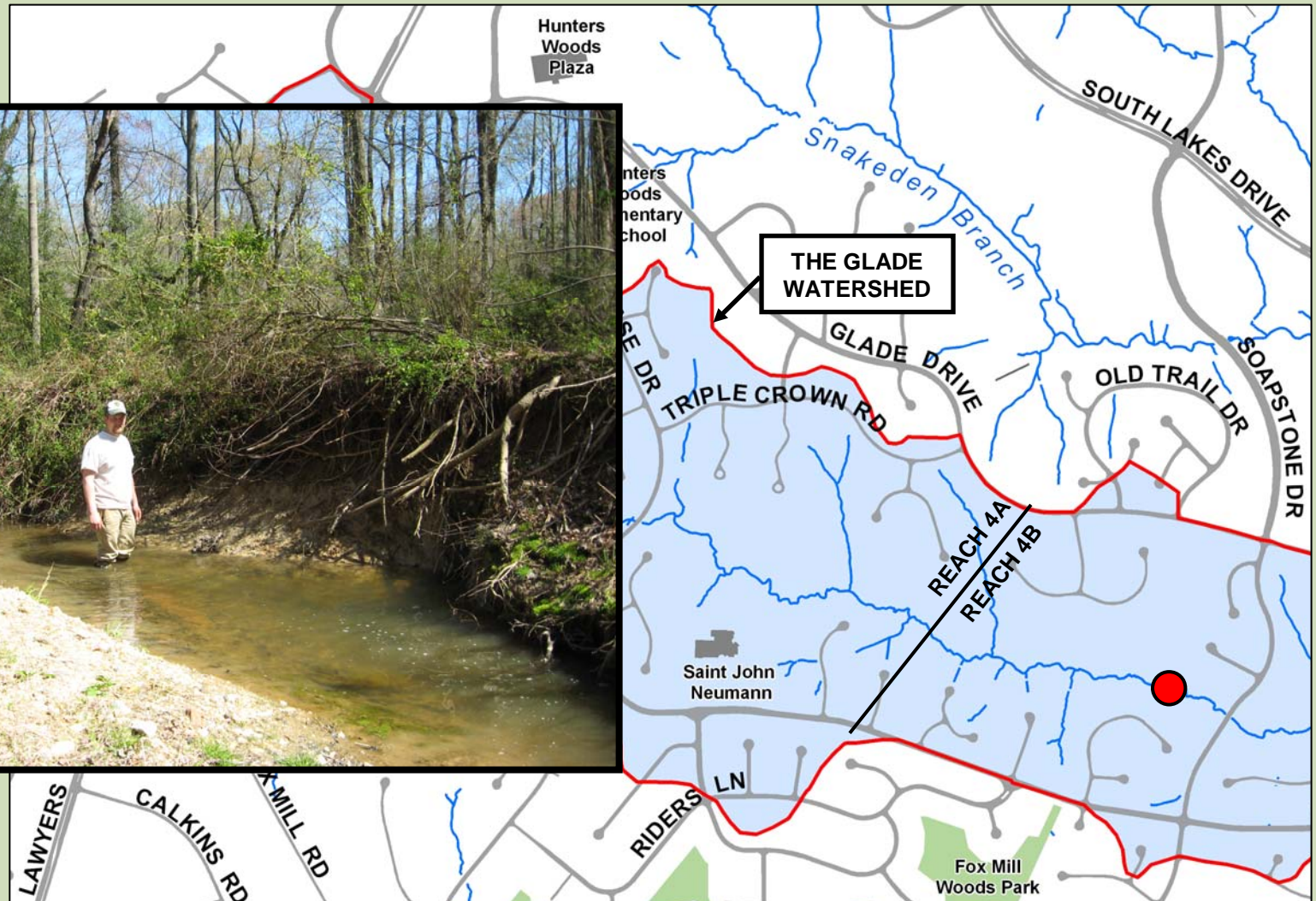
EXISTING SANITARY SEWER EASEMENT / ACCESS PATH THE GLADE REACH 4B

Reach 4B



EXISTING CONDITIONS - THE GLADE REACH 4B

Reach 4B

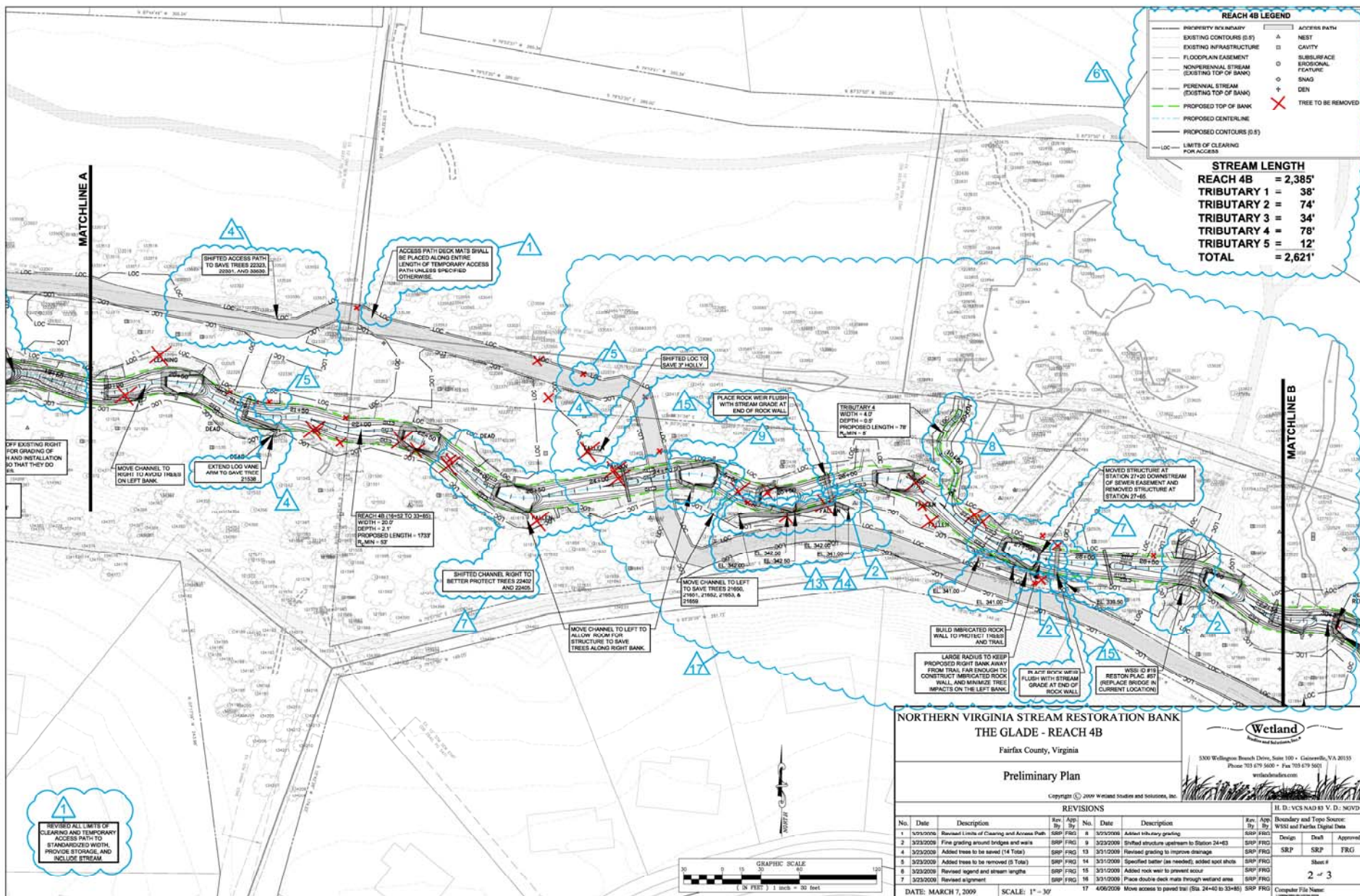


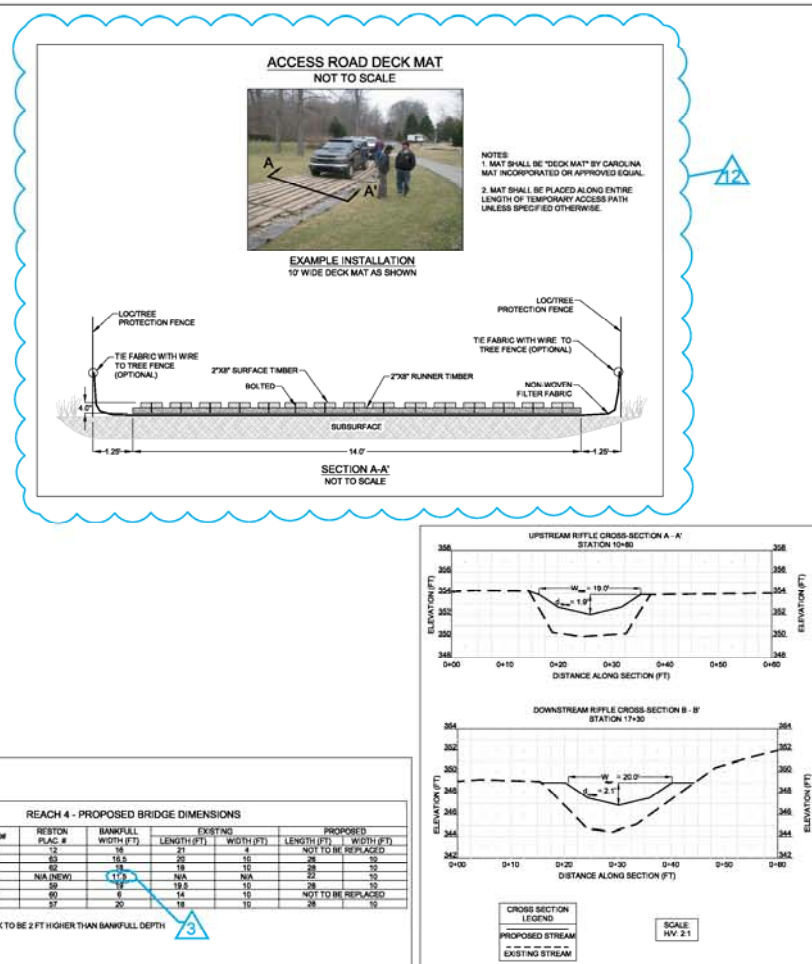
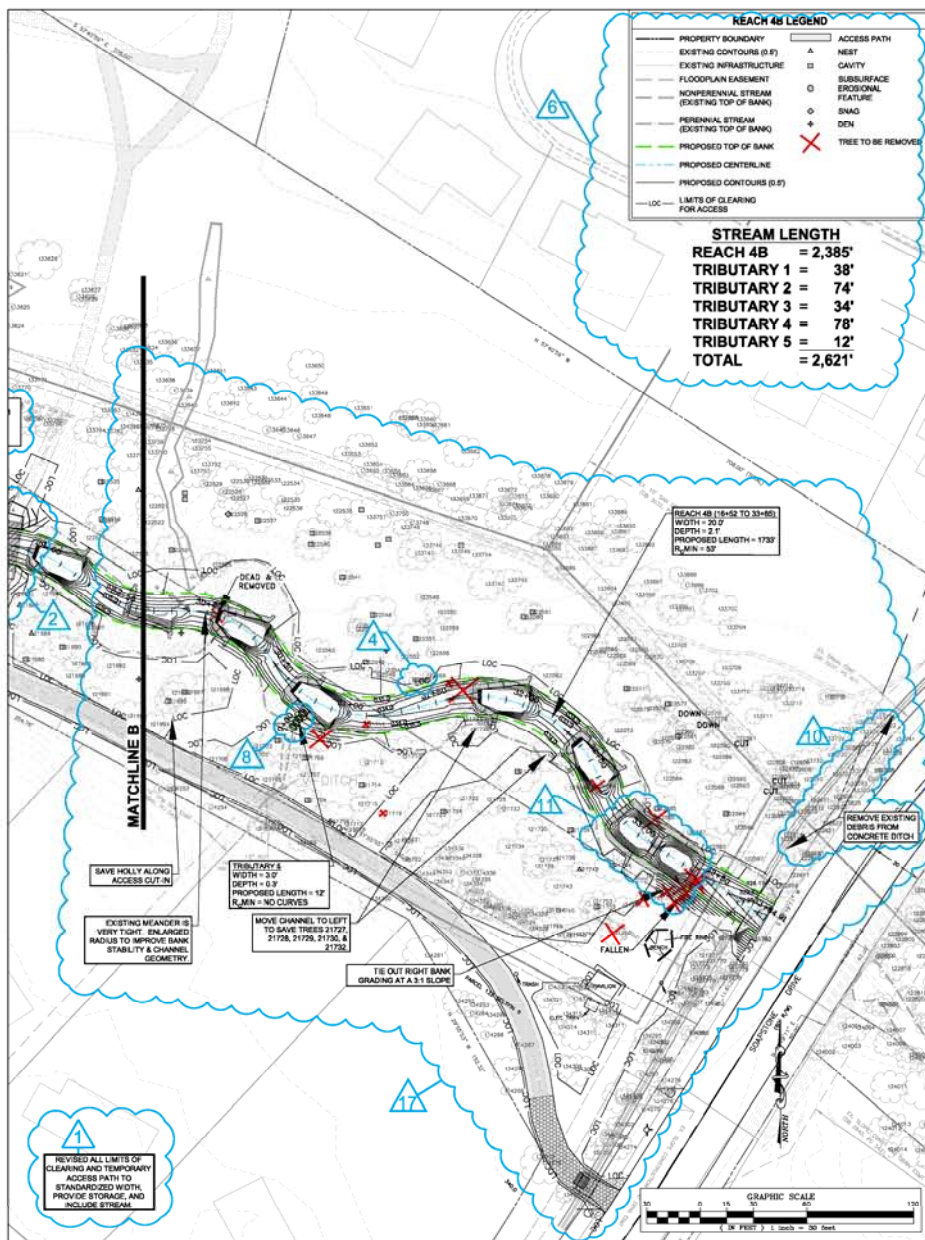
EXISTING CONDITIONS - THE GLADE REACH 4B

Tributary 2









NORTHERN VIRGINIA STREAM RESTORATION THE GLADE - REACH 4B

Fairfax County, Virginia

Preliminary Plan

Copyright © 2009 Wetland Studies and Solutions, Inc.

Wetland
Studies and Solutions, Inc.

5300 Wellington Branch Drive, Suite 100 • Glenview, VA 20155
Phone 703 679 5600 • Fax 703 679 5601
wetlandstudies.com

U.D.: VCS-NAD 83 V.D.: NAD 29

Boundary and Topo Source: WSSSI and Fairfax Digital Data

REVISIONS				Boundary and Topo Source			
No.	Date	Description	Rev. By	Date	Description	Rev. By	Date
1	3/23/2009	Revised Limits of Clearing and Access Path	SRP/FRG	6	3/23/2009	Revised legend and stream lengths	SRP/FRG
2	3/23/2009	Fine grading around bridges and walls	SRP/FRG	8	3/23/2009	Added tributary grading	SRP/FRG
3	3/23/2009	Revised bridge below	SRP/FRG	10	3/23/2009	Clear debris from concrete ditch	SRP/FRG
4	3/23/2009	Added trees to be saved (14 Total)	SRP/FRG	11	3/23/2009	Decreased steepness depth	SRP/FRG
5	3/23/2009	Added trees to be removed (5 Total)	SRP/FRG	12	3/23/2009	Added missing revision cloud	SRP/FRG
6	3/23/2009	Revised legend and stream lengths	SRP/FRG	13	3/23/2009	Please divide deck mats through wetland area	SRP/FRG
DATE: MARCH 7, 2009				SCALE: 1" = 30'			

QUESTIONS?