

V Datum: NGVD 29 H Datum: NAD 83

Boundary/Topo Source: WSSI, Air Survey

Design	Draft	SRP	FRG
			Approved

SRP	SRP	FRG

Date: 4/10/2008 Scale: 1"=50'

File Name: L:\20003.05\CADD\04+ENGR\DRB

Northern Virginia Stream
Restoration Bank - Reaches 6A, 6B, & 8A
 Fairfax County, Virginia

Grading Plan - Reach 6A

Copyright © 2007 Wetland Studies and Solutions, Inc.



5300 Wellington Branch Drive • Suite 100
 Gainesville, Virginia 20155
 Phone 703 679 5600 • Fax 703 679 5601
 www.wetlandstudies.com



V Datum: NGVD 29 H Datum: NAD 83
 Boundary/Topo Source: WSSI, Air Survey

Design	Draft	Approved
SRP	SRP	FRG

Sheet #
2 of 4

Date: 4/10/2008 Scale: 1"=50'

File Name: L:\20003.05\CADD\04+ENGR\DRB

Northern Virginia Stream
Restoration Bank - Reaches 6A, 6B, & 8A
 Fairfax County, Virginia

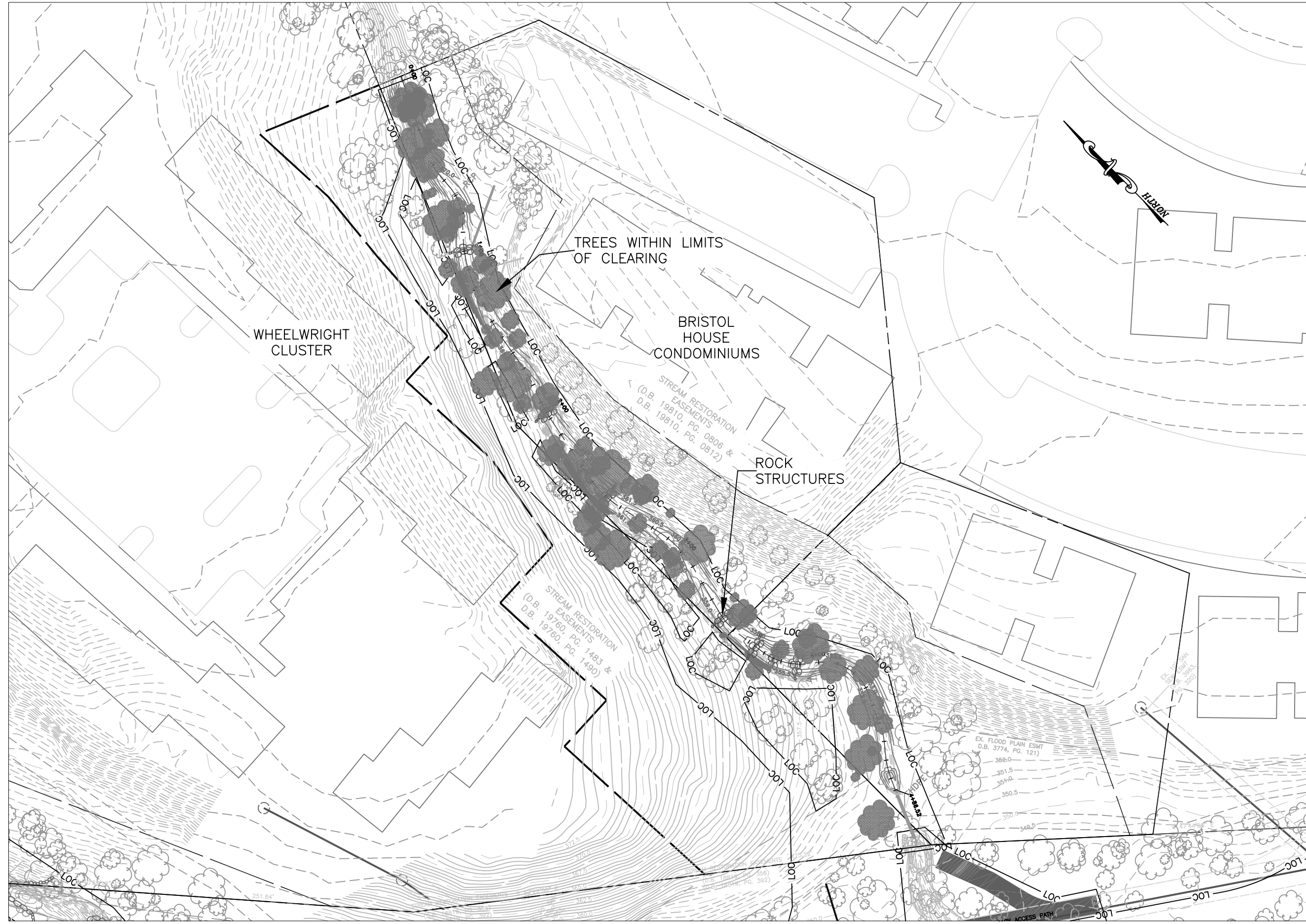
Grading Plan - Reach 6B

Copyright © 2007 Wetland Studies and Solutions, Inc.



5300 Wellington Branch Drive • Suite 100
 Gainesville, Virginia 20155
 Phone 703 679 5600 • Fax 703 679 5601
 www.wetlandstudies.com





V Datum: NGVD 29 H Datum: NAD 83

Boundary/Topo Source: WSSI, Air Survey

Design	Draft	SRP	Approved
SRP		SRP	FRG

Sheet #
2 of 4

Date: 4/10/2008

Scale: 1"=50'

File Name: L:\20003.05\CADD\04-ENGR\DRB

Northern Virginia Stream Restoration Bank - Reaches 6A, 6B, & 8A

Fairfax County, Virginia



Studies and Solutions, Inc.

5300 Wellington Branch Drive • Suite 100
Gainesville, Virginia 20155
Phone 703 679 5600 • Fax 703 679 5601
www.wetlandstudies.com

Grading Plan - Reach 8A

Copyright © 2007 Wetland Studies and Solutions, Inc.