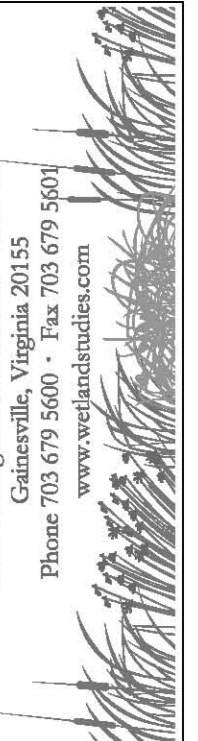


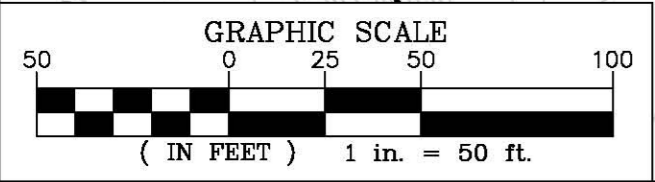
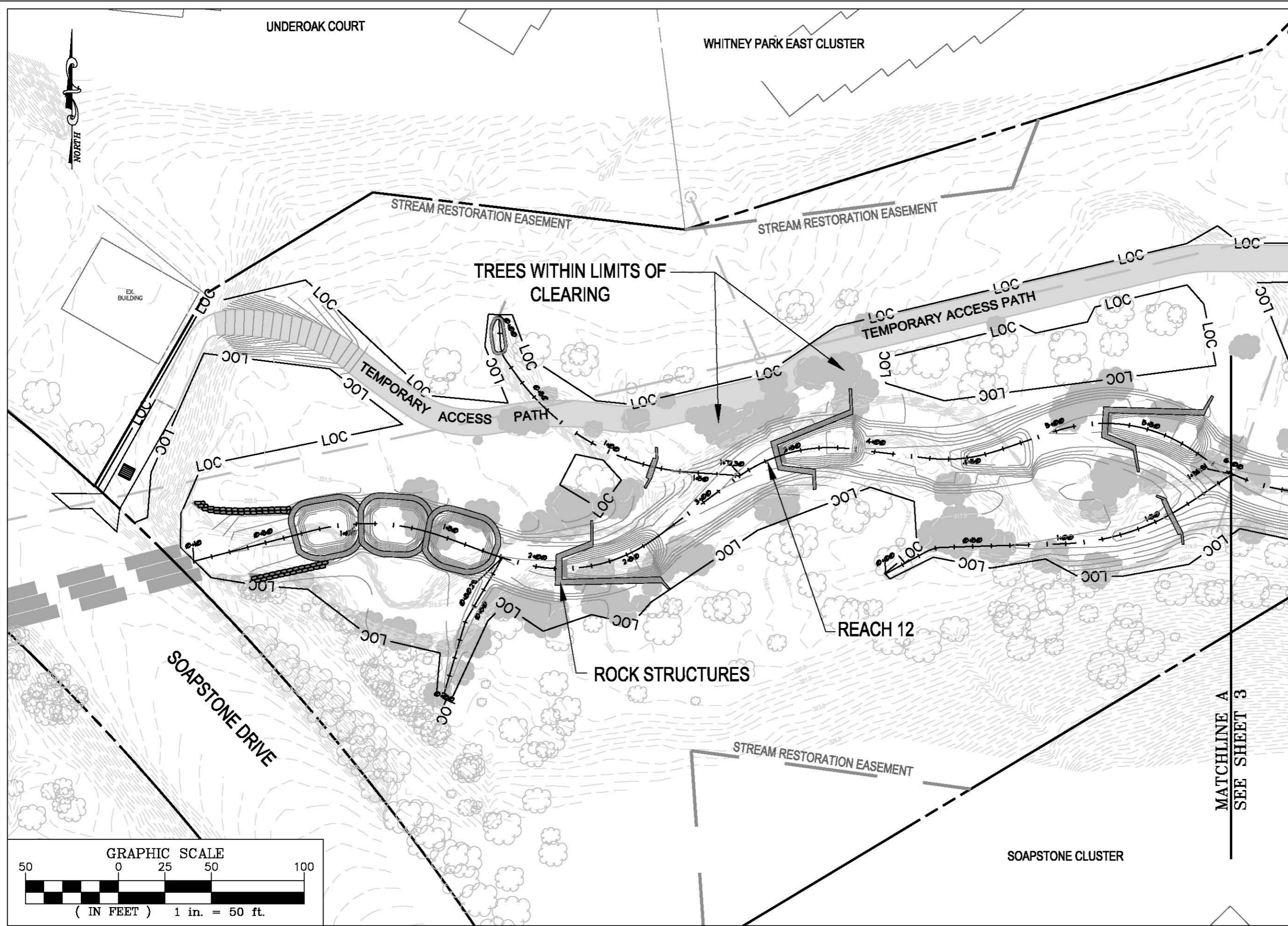
V Datum: NGVD 29 H Datum: NAD 83	
Boundary/Topo Source: WSSI, Air Survey	
Design	Approved
NAS	FRG
Sheet # 1 of 6	
Date: JULY 2008	Scale: 1"=200'
File Name: L:\20003.12\CADD\04-ENGR\06-DRB	

Northern Virginia Stream
Restoration Bank - Reaches 12, 16, & 17
 Fairfax County, Virginia
Plan Layout Overview
 Copyright © 2008 Wetland Studies and Solutions, Inc.



5300 Wellington Branch Drive • Suite 100
 Gainesville, Virginia 20155
 Phone 703 679 5600 • Fax 703 679 5601
 www.wetlandstudies.com





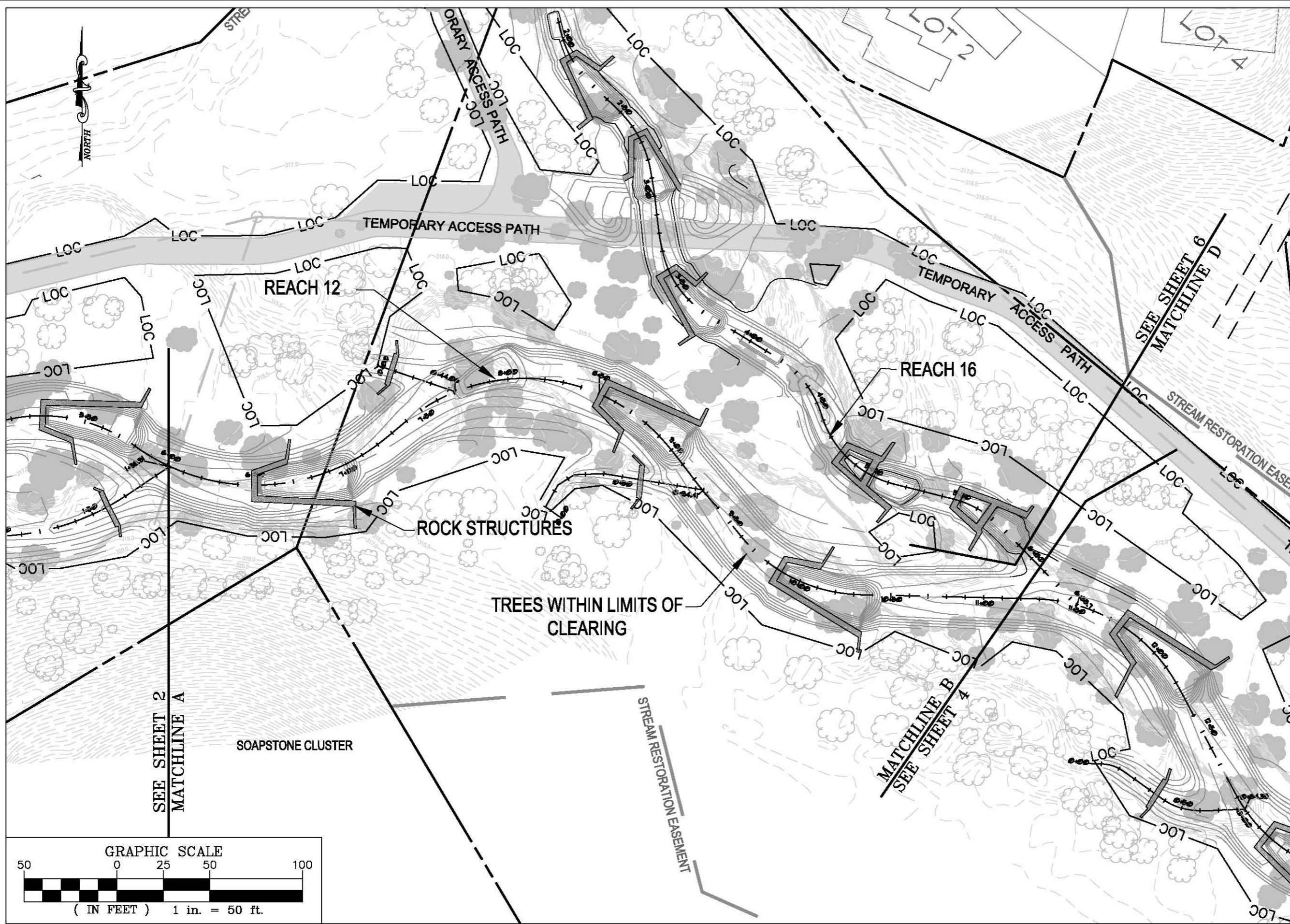
Wetland
Studies and Solutions, Inc.
5300 Wellington Branch Drive • Suite 100
Gainesville, Virginia 20155
Phone 703 679 5600 • Fax 703 679 5601
www.wetlandstudies.com

Northern Virginia Stream
Restoration Bank - Reaches 12, 16, & 17
Fairfax County, Virginia

Grading Plan - Reach 12

Copyright © 2008 Wetland Studies and Solutions, Inc.

V Datum: NGVD 29	H Datum: NAD 83	
Boundary/Topo Source: WSSI, Air Survey		
Design	Draft	Approved
NAS	NAS	FRG
Sheet #		2 of 6
Date: JULY 2008	Scale: 1"=50'	
File Name: L:\20003.12\CADD\04-ENGR\06-DRB		



Northern Virginia Stream
 Restoration Bank - Reaches 12, 16, & 17
 Fairfax County, Virginia

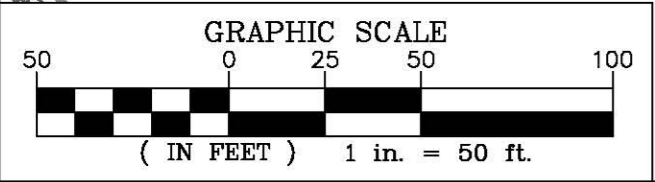
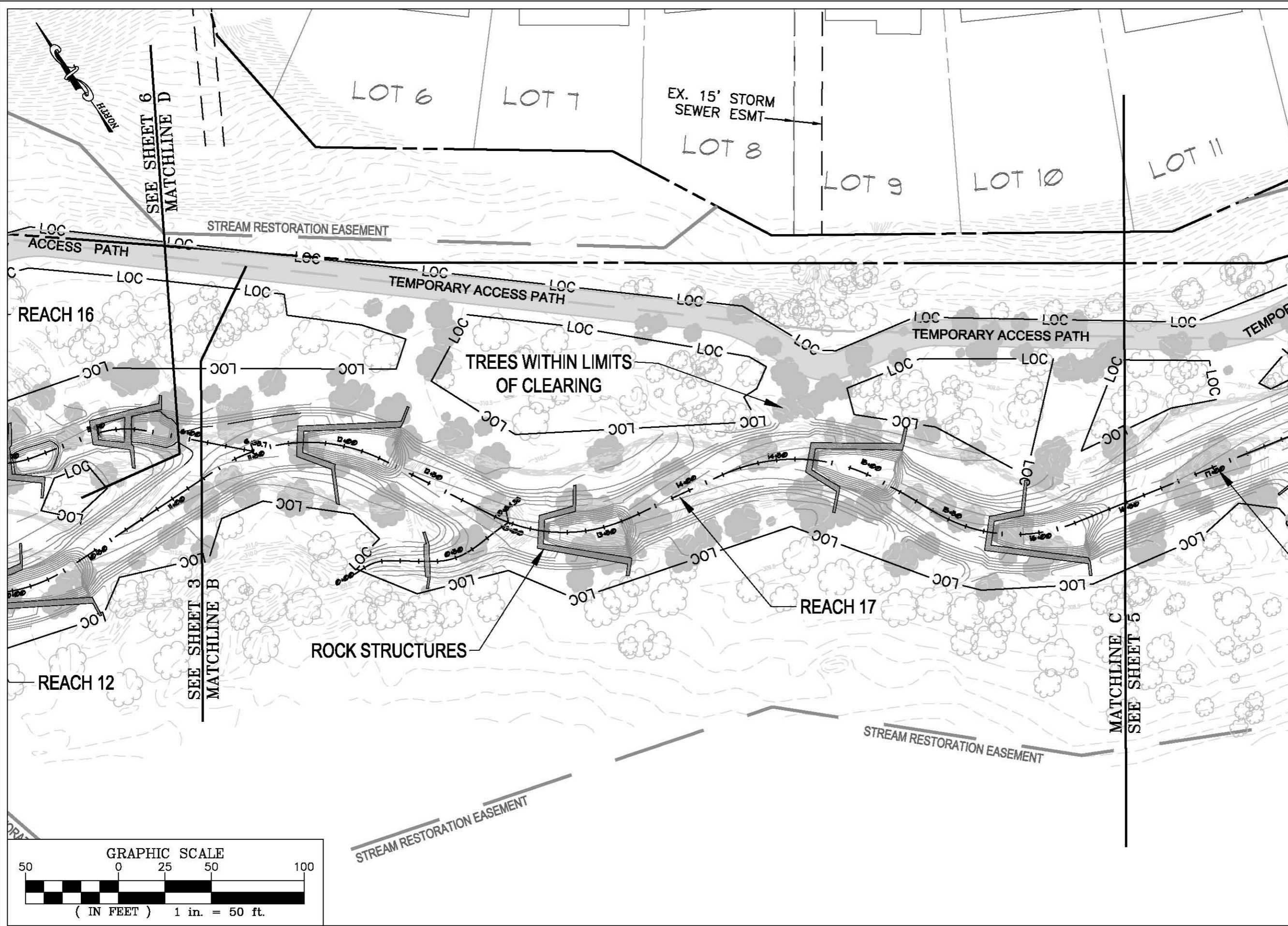



5300 Wellington Branch Drive • Suite 100
 Gainesville, Virginia 20155
 Phone 703 679 5600 • Fax 703 679 5601
 www.wetlandstudies.com

Grading Plan - Reach 12

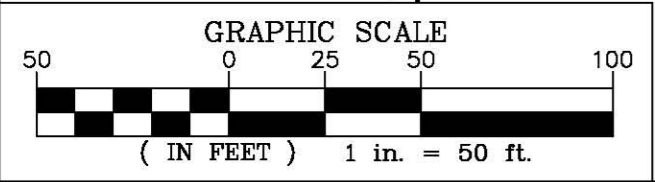
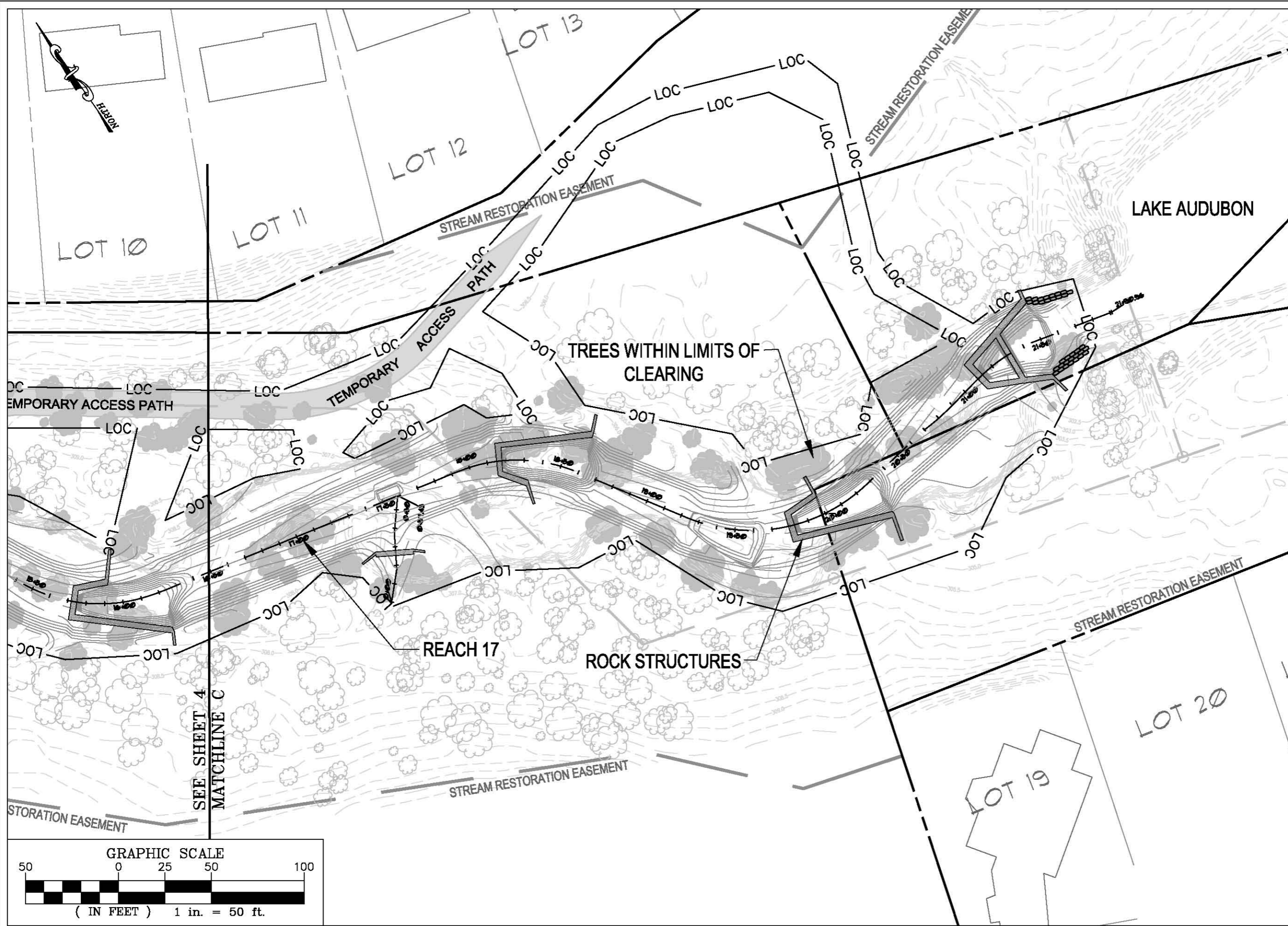
Copyright © 2008 Wetland Studies and Solutions, Inc.

V Datum: NGVD 29 H Datum: NAD 83	
Boundary/Topo Source: WSSI, Air Survey	
Design	Approved
NAS	FRG
Sheet #	
3 of 6	
Date: JULY 2008	Scale: 1"=50'
File Name: L:\20003.12\CADD\04-ENGR\06-DRB	



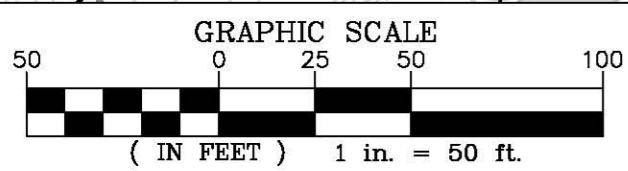
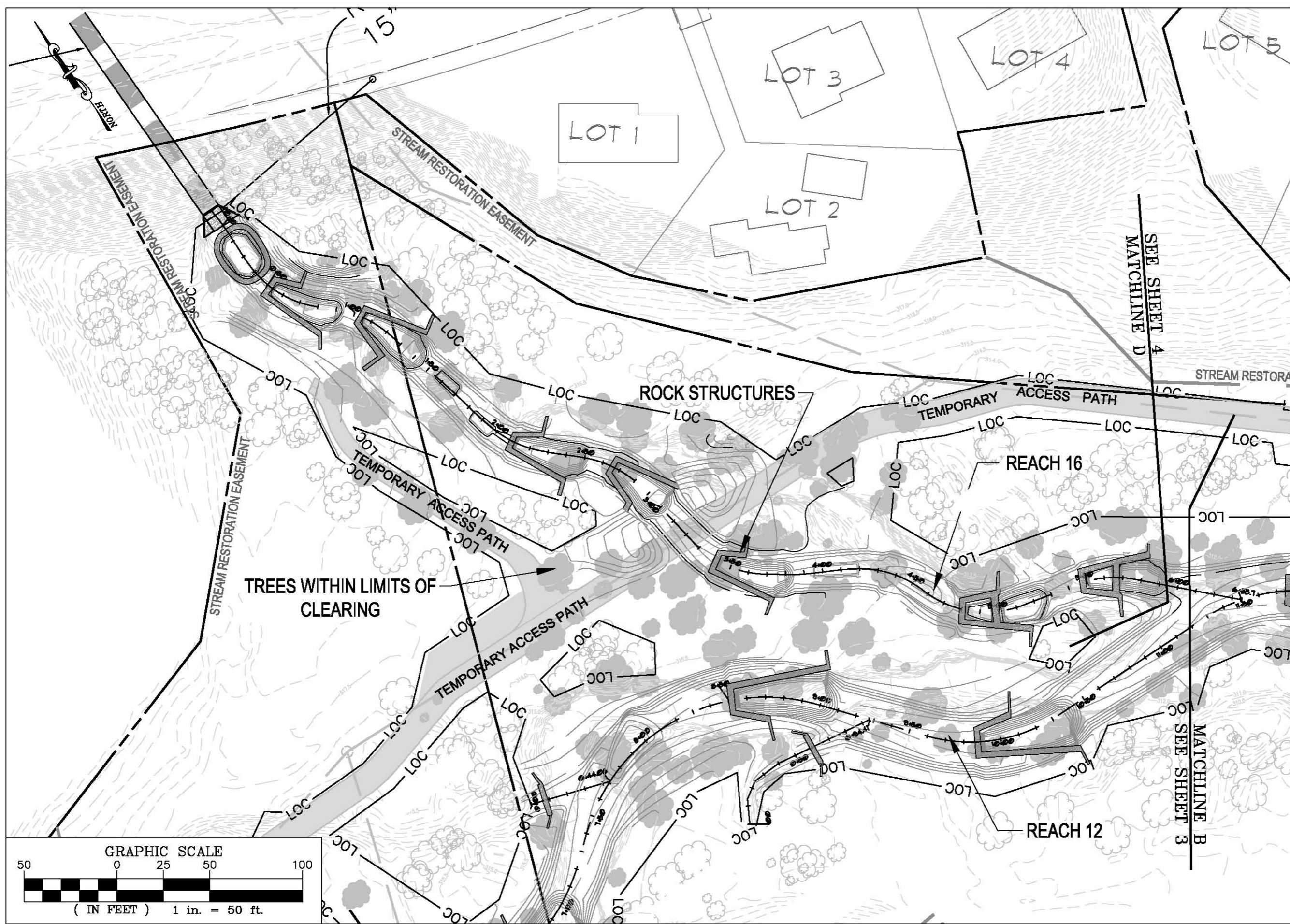
	
Northern Virginia Stream Restoration Bank - Reaches 12, 16, & 17 Fairfax County, Virginia	
Grading Plan - Reach 17	
Copyright © 2008 Wetland Studies and Solutions, Inc.	
V Datum: NGVD 29 Boundary/Topo Source: WSSI, Air Survey	H Datum: NAD 83 Design: NAS Draft: NAS Approved: FRG
Sheet # 4 of 6	
Date: JULY 2008 Scale: 1"=50' File Name: L:\20003.12\CADD\04-ENGR\06-DRB	

Wetland
 Studies and Solutions, Inc.
 5300 Wellington Branch Drive • Suite 100
 Gainesville, Virginia 20155
 Phone 703 679 5600 • Fax 703 679 5601
 www.wetlandstudies.com



SEE SHEET 4
MATCHLINE C

		<p>Wetland Studies and Solutions, Inc.</p> <p>5300 Wellington Branch Drive • Suite 100 Gainesville, Virginia 20155 Phone 703 679 5600 • Fax 703 679 5601 www.wetlandstudies.com</p>	
<p>Northern Virginia Stream Restoration Bank - Reaches 12, 16, & 17 Fairfax County, Virginia</p>			
<p>V Datum: NGVD 29 H Datum: NAD 83 Boundary/Topo Source: WSSI, Air Survey</p>		<p>Design: Draft Approved NAS NAS FRG</p>	
<p>Date: JULY 2008</p>		<p>Scale: 1"=50'</p>	
<p>File Name: L:\20003.12\CADD\04-ENGR\06-DRB</p>		<p>Sheet # 5 of 6</p>	
<p>Copyright © 2008 Wetland Studies and Solutions, Inc.</p>			



Northern Virginia Stream
 Restoration Bank - Reaches 12, 16, & 17
 Fairfax County, Virginia

V Datum: NGVD 29	H Datum: NAD 83	
Boundary/Topo Source: WSSI, Air Survey		
Design	Draft	Approved
NAS	NAS	FRG
Sheet #		6 of 6
Date: JULY 2008	Scale: 1"=50'	
File Name: L:\20003.12\CADD\04-ENGR\06-DRB		



5300 Wellington Branch Drive • Suite 100
 Gainesville, Virginia 20155
 Phone 703 679 5600 • Fax 703 679 5601
 www.wetlandstudies.com

Grading Plan - Reach 17

Copyright © 2008 Wetland Studies and Solutions, Inc.