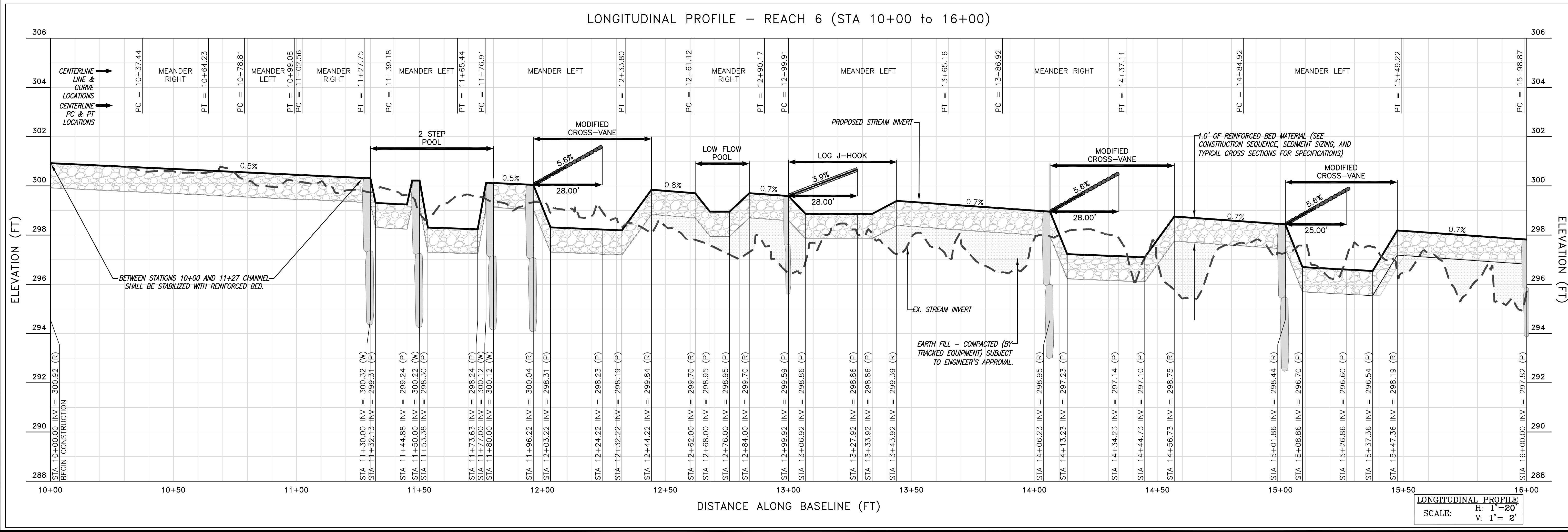


**Wetland**  
 Studies and Solutions, Inc.  
 5300 Wellington Branch Drive, Suite 100 • Gainesville, VA 20155  
 Phone: 703 679 5600 • Fax: 703 679 5601  
 wetland@wetland.com

**Northern Virginia Stream Restoration Bank**  
**The Glade - Reach 6**  
 Fairfax County, Virginia  
**Grading Plan and Longitudinal Profile**  
 Copyright © 2009 Wetland Studies and Solutions, Inc.



REGISTERED PROFESSIONAL ENGINEER  
 STATE OF VIRGINIA  
 FRANK R. GRAZIANO  
 Lic. No. 082099

No.	Date	Description	App. By	Rev. By

Horizontal Datum: VCS NAD 83  
 Vertical Datum: NGVD 29  
 Boundary and Topo Source: WSSI and Fairfax Digital Data

Design	Draft	Approved
SRP	SRP	FRG

Sheet #  
**3 of 94**

Computer File Name:  
 L:\2009\2010\08\0804-ENR-18-18-Plan\GRADING PLAN & PROFILE 01.dwg