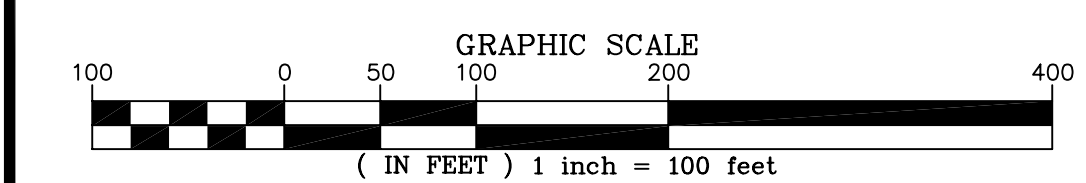
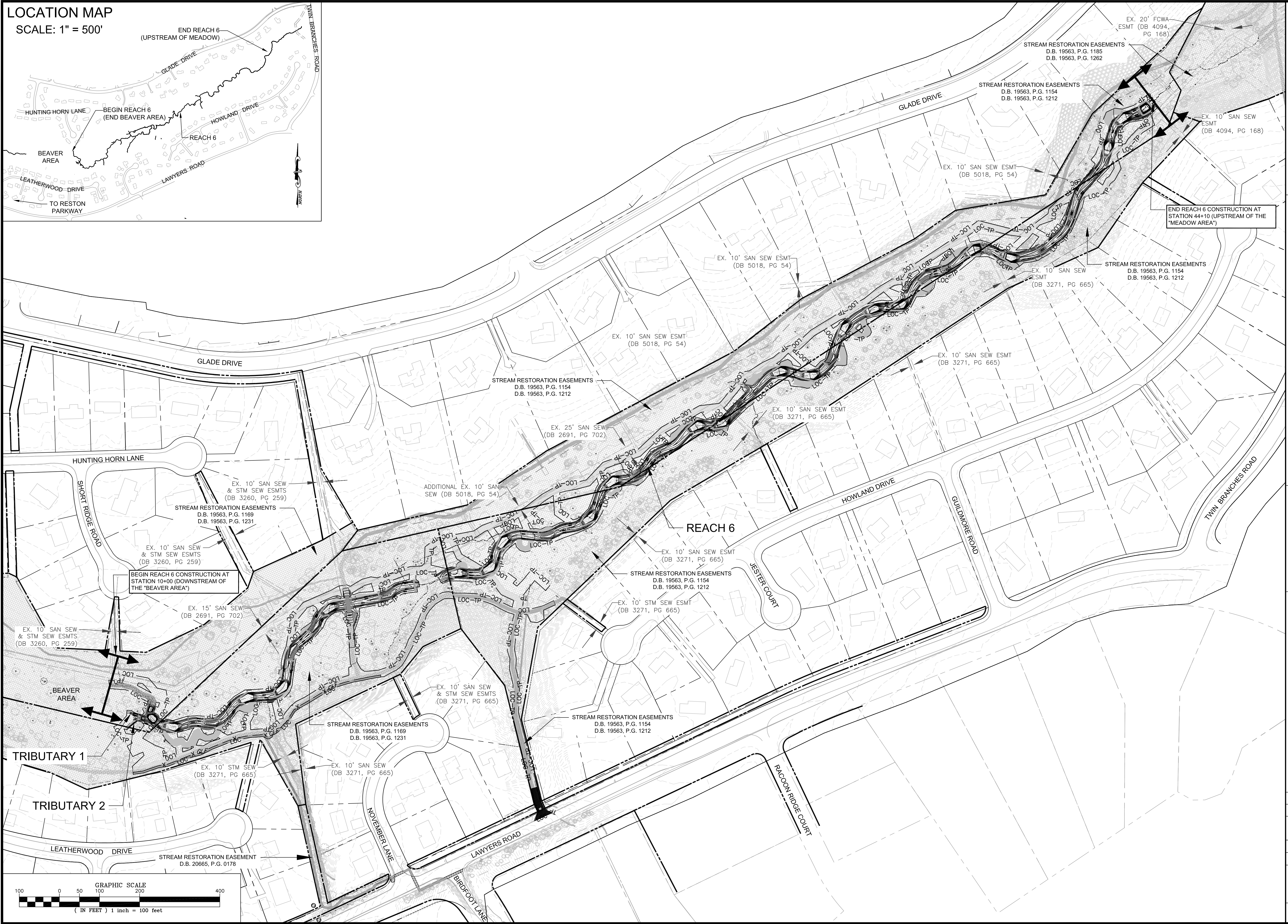
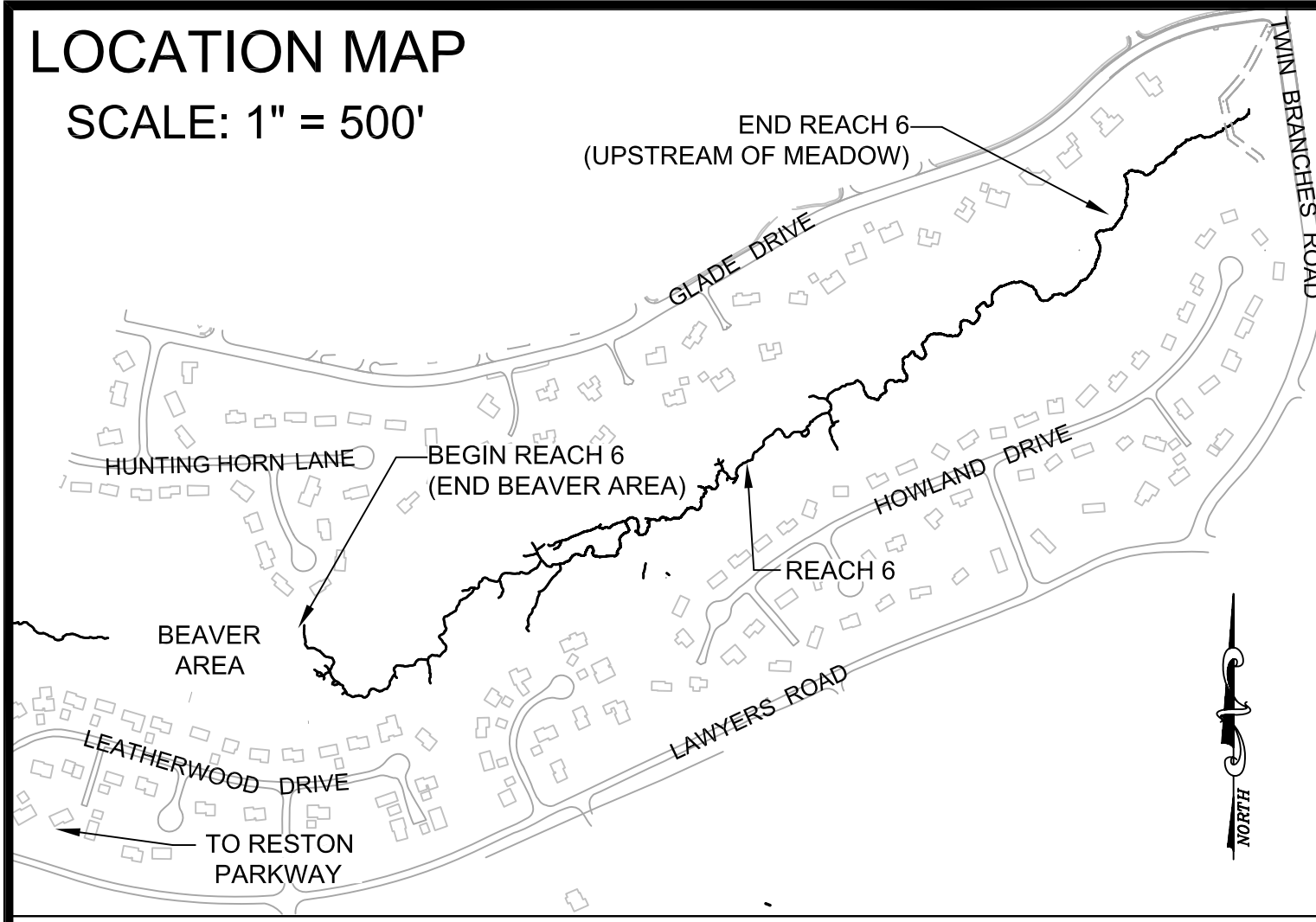


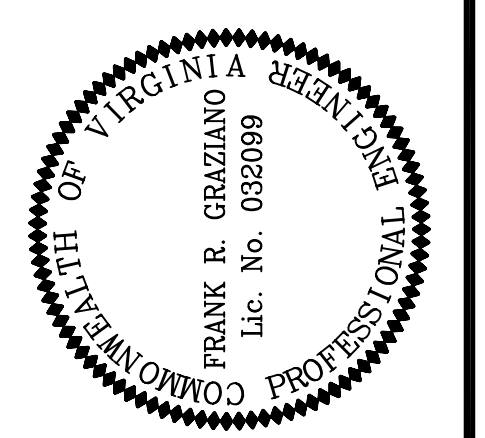
LOCATION MAP

SCALE: 1" = 500'



Wetland
 Studies and Solutions, Inc.[®]
 5300 Wellington Branch Drive, Suite 100 • Gainesville, VA 20155
 Phone: 703 679 5600 • Fax: 703 679 5601
 wetlandsolutions.com

Northern Virginia Stream Restoration Bank
The Glade - Reach 6
 Fairfax County, Virginia
Overall Site Exhibit



REVISIONS		App. By	Rev. By	Date	Description
No.	Date				

Horizontal Datum: VCS NAD 83
 Vertical Datum: NGVD 29
 Boundary and Topo Source: WSSI and Fairfax Digital Data

Design	Draft	Approved
SRP	SRP	FRG

Sheet #
2 of 94

Computer File Name:
 I:\2006\2010\06\00004-ENG-10-Plan
 OVERALL SITE EXHIBIT 01.dwg

DATE: SEPTEMBER 2009 SCALE: 1" = 100'