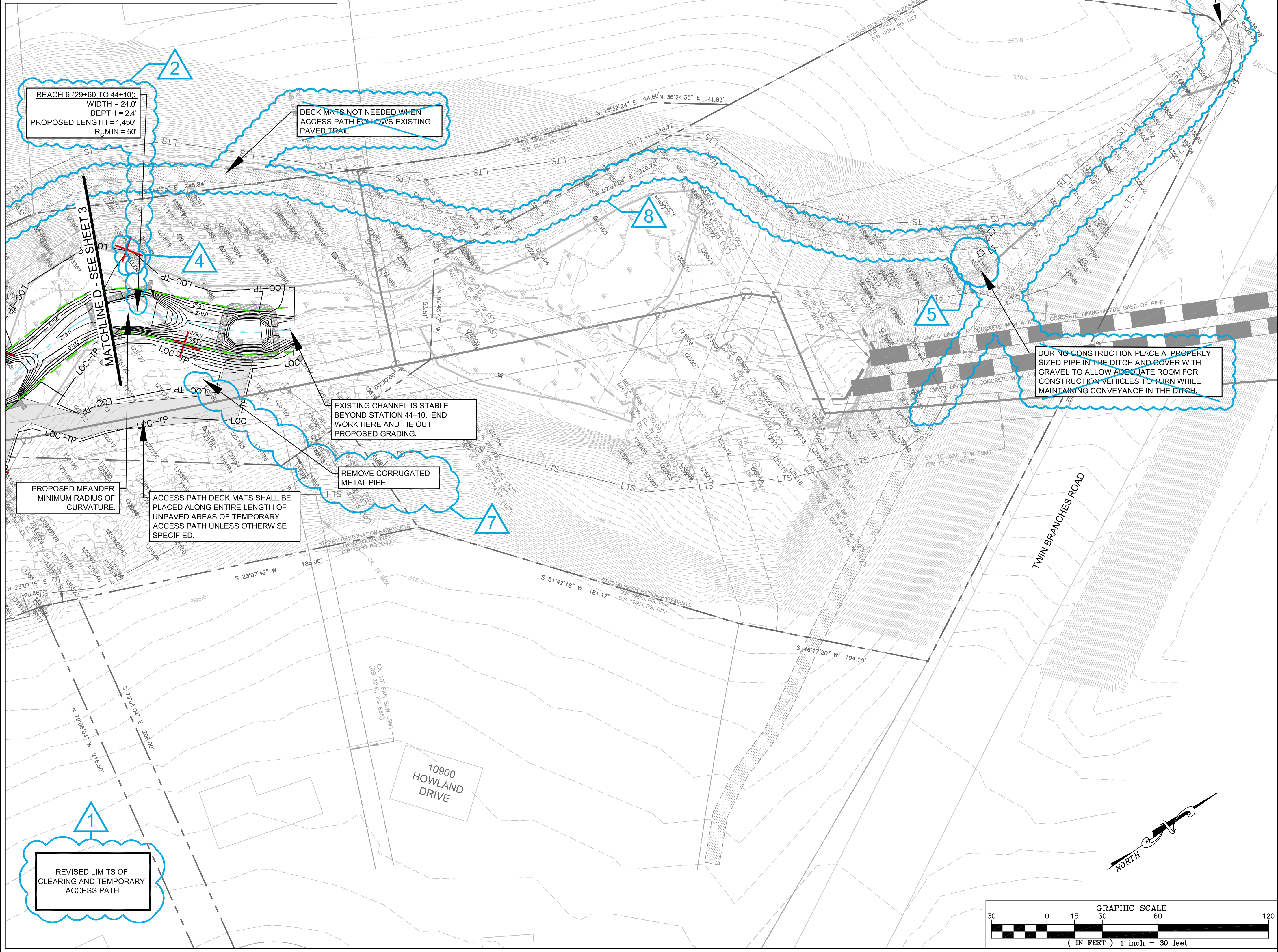


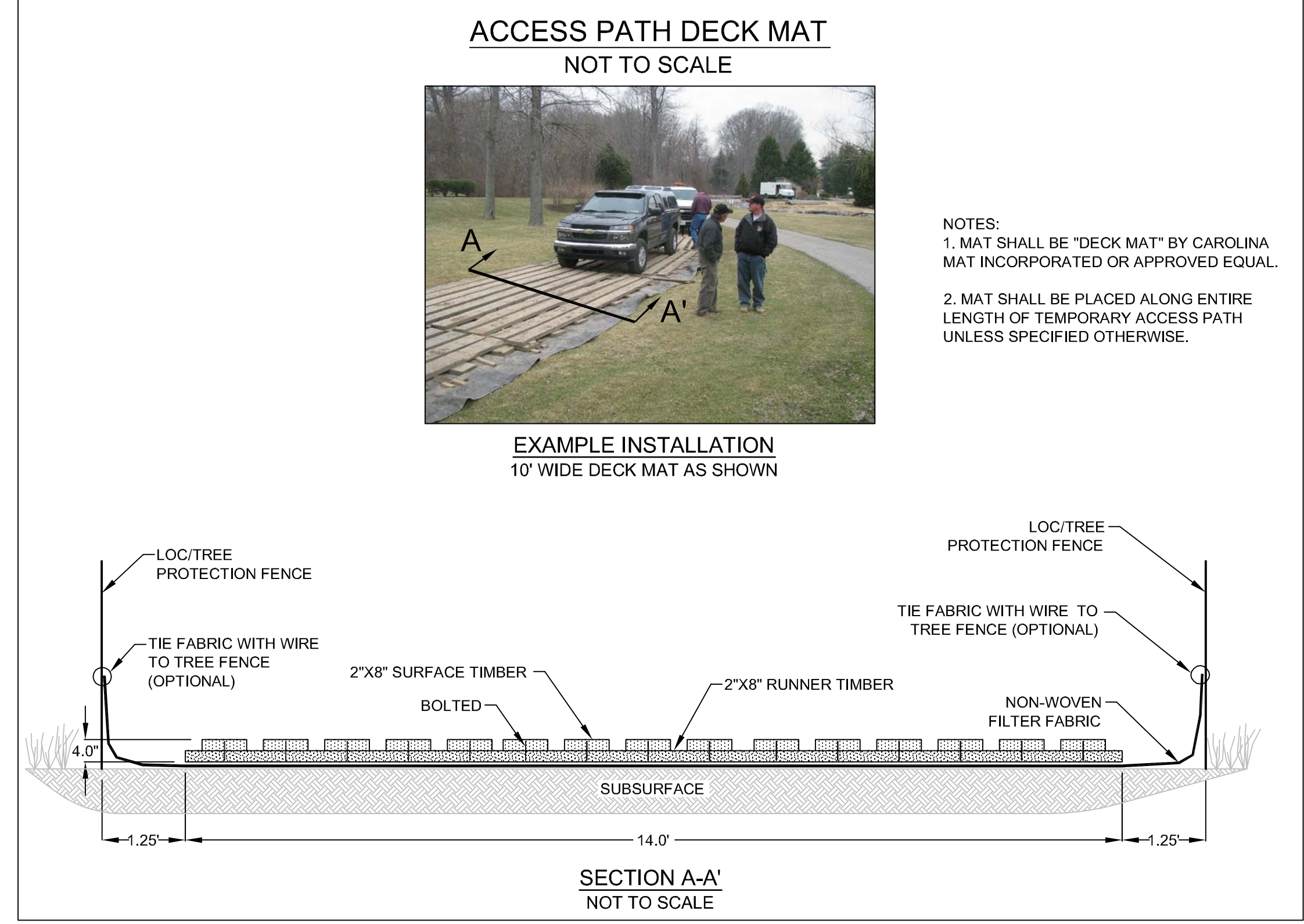
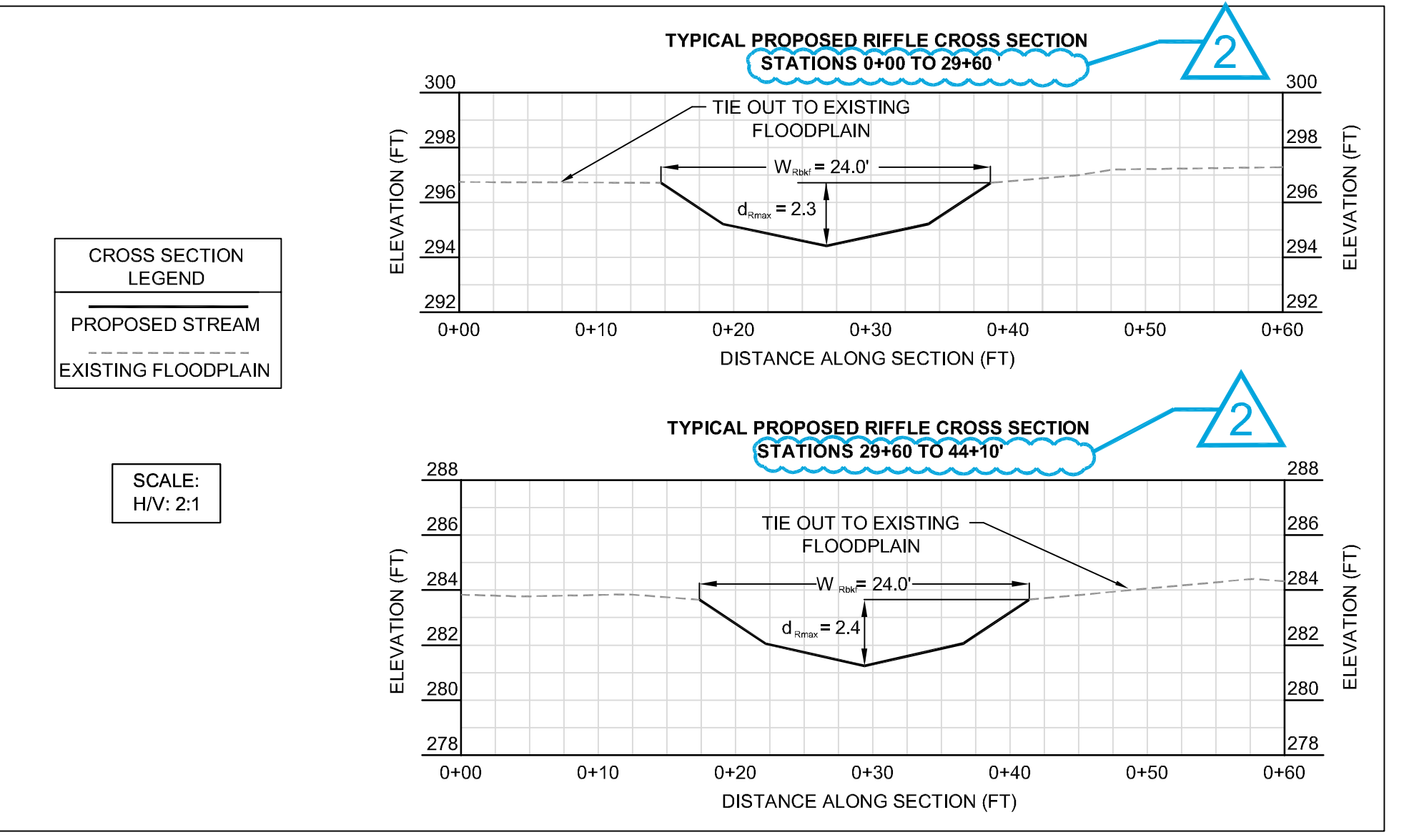
REACH 6 LEGEND	
--- PROPERTY BOUNDARY & STREAM ESMNT, TEMP. GRADING & CONST. ESMNT, & INGRESS-EGRESS ESMNT	▲ NEST
--- STREAM ESMNT, TEMP. GRADING & CONST. ESMNT, & INGRESS-EGRESS ESMNT	□ CAVITY
--- EXISTING CONTOURS (0.5')	○ SUBSURFACE EROSIONAL FEATURE
--- EXISTING INFRASTRUCTURE	◇ SNAG
--- FLOODPLAIN EASEMENT	+ DEN
--- NONPERENNIAL STREAM (EXISTING TOP OF BANK)	--- TREE DRIPLINE
--- PERENNIAL STREAM (EXISTING TOP OF BANK)	--- ACCESS PATH
--- JURISDICTIONAL WETLAND AREAS	✗ TREE TO BE REMOVED
--- LTS --- LIMITS OF TREE SURVEY	
--- PROPOSED TOP OF BANK	
--- PROPOSED CENTERLINE	
--- PROPOSED CONTOURS (0.5')	
--- LOC-TP --- LIMITS OF CLEARING/TREE PROTECTION FENCE	

STREAM LENGTH REACH 6 = 3,345'
TRIBUTARY 1 = 53'
TRIBUTARY 2 = 44'
TOTAL = 3,442'



REACH 6 - PROPOSED BRIDGE DIMENSIONS							
REACH NAME	WSSI ID#	RESTON PLAC. #	BANKFULL WIDTH (FT)	EXISTING		PROPOSED	
				LENGTH (FT)	WIDTH (FT)	LENGTH (FT)	WIDTH (FT)
REACH 6	25	46	24	21	10	40	10
	26	89	N/A	6	9	NOT TO BE REPLACED	NOT TO BE REPLACED
	27	88	N/A	6	9	NOT TO BE REPLACED	NOT TO BE REPLACED

NOTES:
 1. BOTTOM OF BRIDGE DECK TO BE 2 FT HIGHER THAN BANKFULL DEPTH



NORTHERN VIRGINIA STREAM RESTORATION BANK
THE GLADE - REACH 6
 Fairfax County, Virginia

Preliminary Plan

Copyright © 2009 Wetland Studies and Solutions, Inc.

5300 Wellington Branch Drive, Suite 100 • Gainesville, VA 20155
 Phone 703 679 5600 • Fax 703 679 5601
 wetlandstudies.com

REVISIONS							
No.	Date	Description	Rev. By	App. By	No.	Date	Description
1	7/24/2009	Revised Limits of Clearing and Access Path	SRP	FRG			
2	7/24/2009	Revised alignment; stream lengths	SRP	FRG			
4	7/24/2009	Added trees to be removed (10 Total)	SRP	FRG			
5	7/24/2009	Added trees to be saved (19 Total)	SRP	FRG			
7	7/24/2009	Added grading note	SRP	FRG			
8	7/24/2009	Removed access option 1 & assoc. notes	SRP	FRG			

DATE: JUNE 27, 2009 SCALE: 1" = 30' C.I. = 0.5'

H. D.: VCS NAD 83 V. D.: NGVD 29

Boundary and Topo Source: WSSI and Fairfax Digital Data

Design	Draft	Approved
SRP	SRP	FRG

Sheet #
4 of 4

Computer File Name: I:\2009\2009-06-01-01-01-01.dwg

