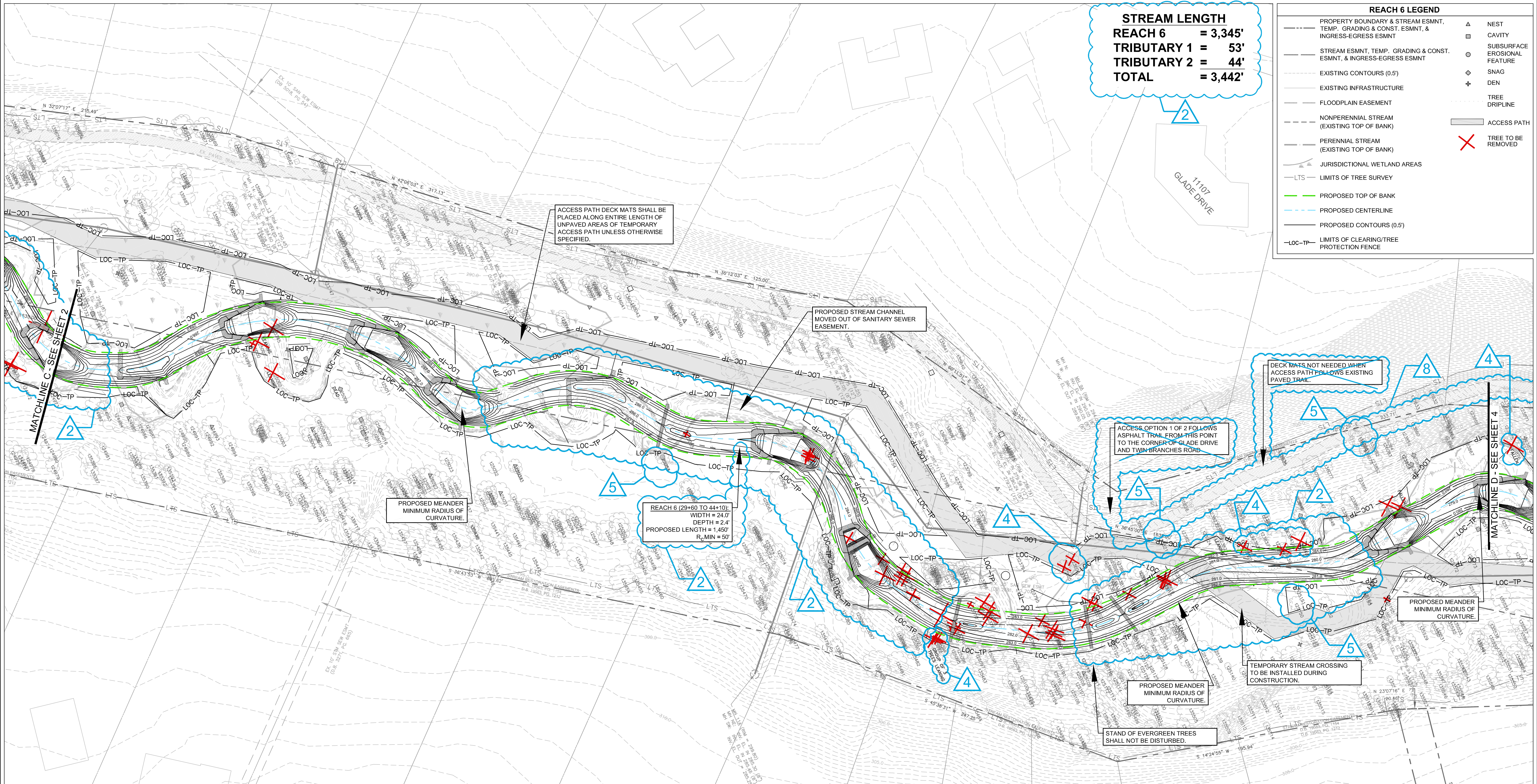


STREAM LENGTH
REACH 6 = 3,345'
TRIBUTARY 1 = 53'
TRIBUTARY 2 = 44'
TOTAL = 3,442'

REACH 6 LEGEND

| | | | |
|-----|--|---|------------------------------|
| --- | PROPERTY BOUNDARY & STREAM ESMNT, TEMP. GRADING & CONST. ESMNT, & INGRESS-EGRESS ESMNT | ▲ | NEST |
| --- | STREAM ESMNT, TEMP. GRADING & CONST. ESMNT, & INGRESS-EGRESS ESMNT | □ | CAVITY |
| --- | EXISTING CONTOURS (0.5') | ○ | SUBSURFACE EROSIONAL FEATURE |
| --- | EXISTING INFRASTRUCTURE | ◇ | SNAG |
| --- | FLOODPLAIN EASEMENT | + | DEN |
| --- | NONPERENNIAL STREAM (EXISTING TOP OF BANK) | ○ | TREE DRIPLINE |
| --- | PERENNIAL STREAM (EXISTING TOP OF BANK) | ○ | ACCESS PATH |
| --- | JURISDICTIONAL WETLAND AREAS | ✗ | TREE TO BE REMOVED |
| --- | LTS - LIMITS OF TREE SURVEY | | |
| --- | PROPOSED TOP OF BANK | | |
| --- | PROPOSED CENTERLINE | | |
| --- | PROPOSED CONTOURS (0.5') | | |
| --- | LOC-TP - LIMITS OF CLEARING/TREE PROTECTION FENCE | | |



1
 REVISED LIMITS OF CLEARING AND TEMPORARY ACCESS PATH

NORTHERN VIRGINIA STREAM RESTORATION BANK
THE GLADE - REACH 6
 Fairfax County, Virginia

Preliminary Plan

Wetland
 Studies and Solutions, Inc.[®]

5300 Wellington Branch Drive, Suite 100 • Gainesville, VA 20155
 Phone 703 679 5600 • Fax 703 679 5601
 wetlandstudies.com

Copyright © 2009 Wetland Studies and Solutions, Inc.

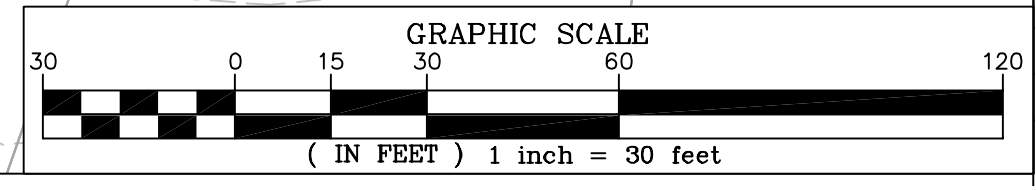
| REVISIONS | | | | | | | |
|-----------|-----------|--|---------|---------|-----|------|-------------|
| No. | Date | Description | Rev. By | App. By | No. | Date | Description |
| 1 | 7/24/2009 | Revised Limits of Clearing and Access Path | SRP | FRG | | | |
| 2 | 7/24/2009 | Revised alignment; stream lengths | SRP | FRG | | | |
| 4 | 7/24/2009 | Added trees to be removed (10 Total) | SRP | FRG | | | |
| 5 | 7/24/2009 | Added trees to be saved (19 Total) | SRP | FRG | | | |
| 8 | 7/24/2009 | Removed access option 1 & assoc. notes | SRP | FRG | | | |

H. D.: VCS NAD 83 V. D.: NGVD 29
 Boundary and Topo Source: WSSI and Fairfax Digital Data

| | | |
|--------|-------|----------|
| Design | Draft | Approved |
| SRP | SRP | FRG |

Sheet #
3 of 4

Computer File Name:
 1-2009-2009-0001-0001.dwg



DATE: JUNE 27, 2009 SCALE: 1" = 30' C.I. = 0.5'