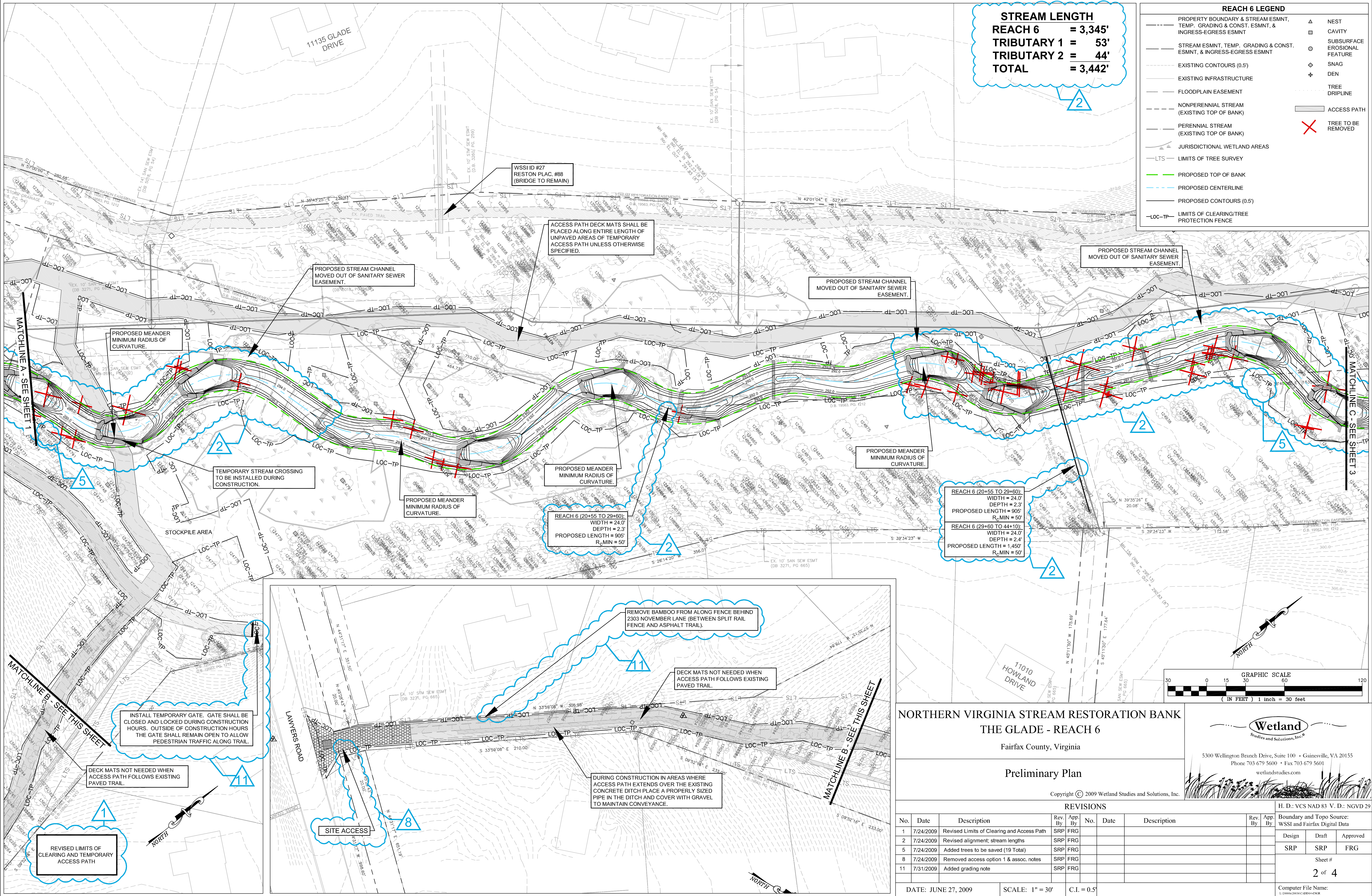


STREAM LENGTH
REACH 6 = 3,345'
TRIBUTARY 1 = 53'
TRIBUTARY 2 = 44'
TOTAL = 3,442'

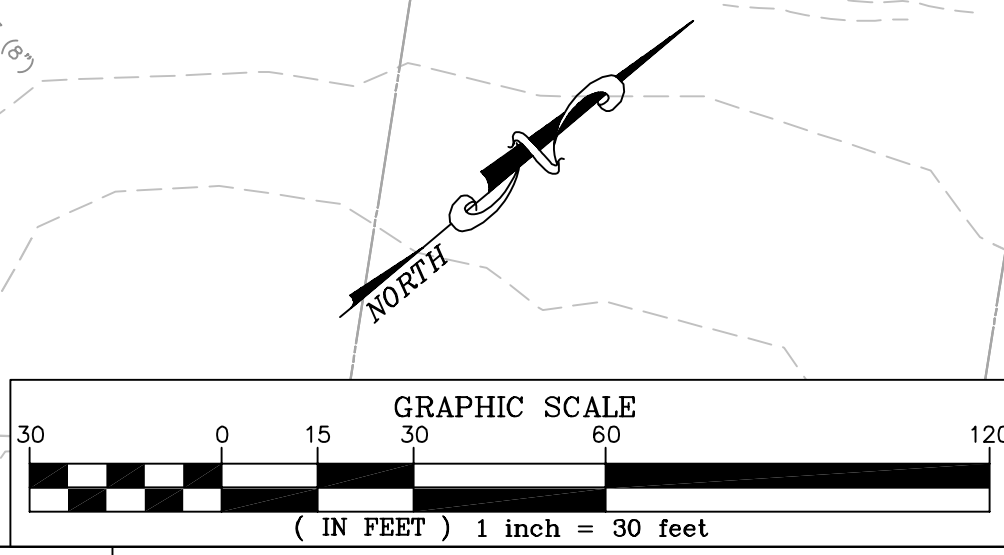
REACH 6 LEGEND

--- PROPERTY BOUNDARY & STREAM ESMNT, TEMP. GRADING & CONST. ESMNT, & INGRESS-EGRESS ESMNT	△ NEST
--- STREAM ESMNT, TEMP. GRADING & CONST. ESMNT, & INGRESS-EGRESS ESMNT	□ CAVITY
--- EXISTING CONTOURS (0.5')	○ SUBSURFACE EROSIONAL FEATURE
--- EXISTING INFRASTRUCTURE	◇ SNAG
--- FLOODPLAIN EASEMENT	+ DEN
--- NONPERENNIAL STREAM (EXISTING TOP OF BANK)	○ TREE DRIPLINE
--- PERENNIAL STREAM (EXISTING TOP OF BANK)	○ ACCESS PATH
--- JURISDICTIONAL WETLAND AREAS	✗ TREE TO BE REMOVED
--- LTS --- LIMITS OF TREE SURVEY	
--- PROPOSED TOP OF BANK	
--- PROPOSED CENTERLINE	
--- PROPOSED CONTOURS (0.5')	
--- LOC-TP --- LIMITS OF CLEARING/TREE PROTECTION FENCE	



REACH 6 (20+55 TO 29+60):
 WIDTH = 24.0'
 DEPTH = 2.3'
 PROPOSED LENGTH = 905'
 R_c MIN = 50'

REACH 6 (29+60 TO 44+10):
 WIDTH = 24.0'
 DEPTH = 2.4'
 PROPOSED LENGTH = 1,450'
 R_c MIN = 50'



NORTHERN VIRGINIA STREAM RESTORATION BANK
THE GLADE - REACH 6

Fairfax County, Virginia

Preliminary Plan

Copyright © 2009 Wetland Studies and Solutions, Inc.

Wetland
 Studies and Solutions, Inc.
 5300 Wellington Branch Drive, Suite 100 • Gainesville, VA 20155
 Phone 703 679 5600 • Fax 703 679 5601
 wetlandstudies.com

REVISIONS						H. D.: VCS NAD 83 V. D.: NGVD 29		
No.	Date	Description	Rev. By	App. By		Rev. By	App. By	
1	7/24/2009	Revised Limits of Clearing and Access Path	SRP	FRG				
2	7/24/2009	Revised alignment; stream lengths	SRP	FRG				
5	7/24/2009	Added trees to be saved (19 Total)	SRP	FRG				
8	7/24/2009	Removed access option 1 & assoc. notes	SRP	FRG				
11	7/31/2009	Added grading note	SRP	FRG				

Boundary and Topo Source: WSSI and Fairfax Digital Data

Design	Draft	Approved
SRP	SRP	FRG

Sheet #
2 of 4

Computer File Name: I:\30000\2009-06-01-02-04

DATE: JUNE 27, 2009 SCALE: 1" = 30' C.I. = 0.5'