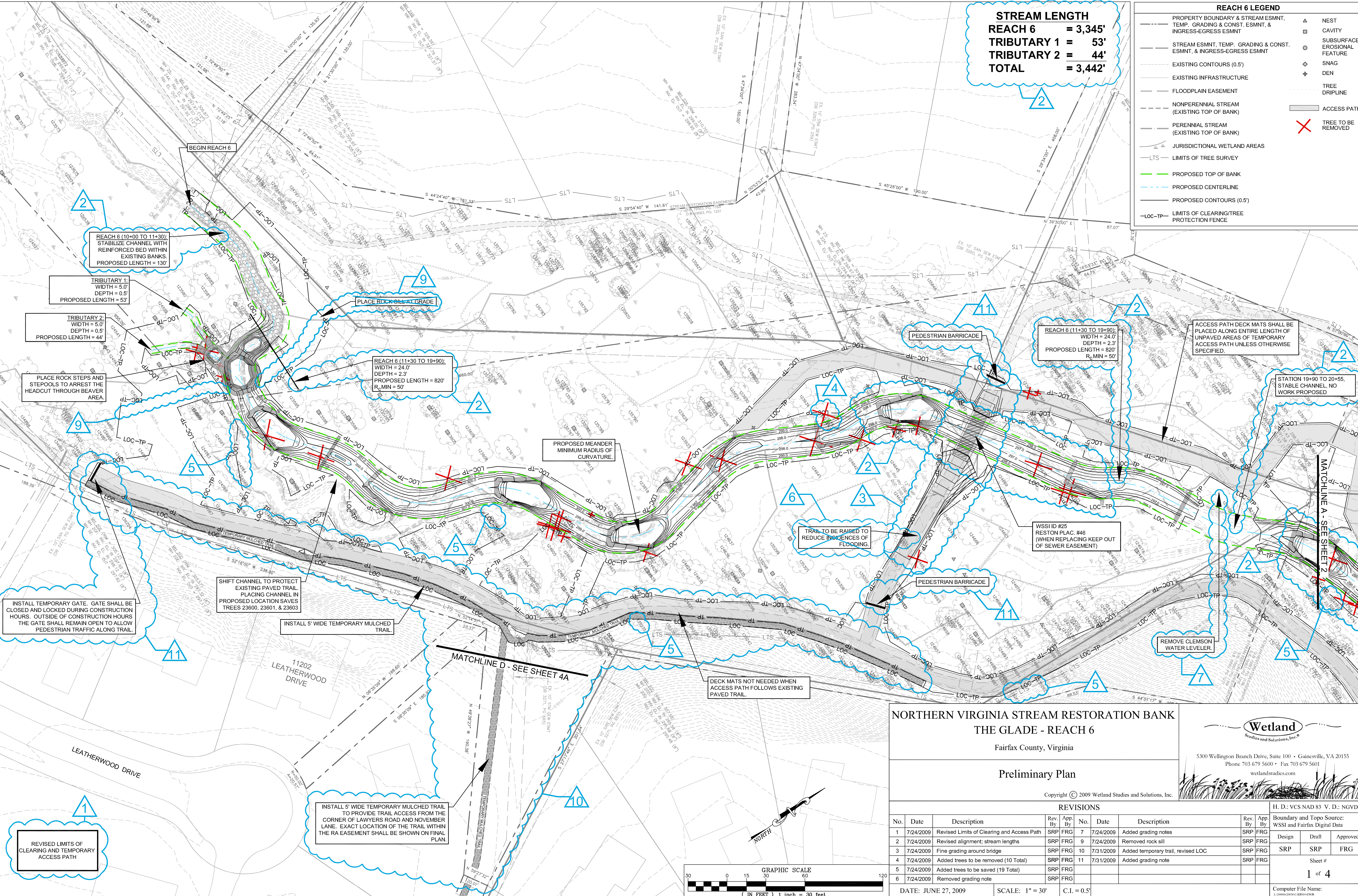


**STREAM LENGTH**  
**REACH 6 = 3,345'**  
**TRIBUTARY 1 = 53'**  
**TRIBUTARY 2 = 44'**  
**TOTAL = 3,442'**

**REACH 6 LEGEND**

--- PROPERTY BOUNDARY & STREAM ESMNT, TEMP. GRADING & CONST. ESMNT, & INGRESS-EGRESS ESMNT	▲ NEST
--- STREAM ESMNT, TEMP. GRADING & CONST. ESMNT, & INGRESS-EGRESS ESMNT	□ CAVITY
--- EXISTING CONTOURS (0.5')	○ SUBSURFACE EROSIONAL FEATURE
--- EXISTING INFRASTRUCTURE	◆ SNAG
--- FLOODPLAIN EASEMENT	⊕ DEN
--- NONPERENNIAL STREAM (EXISTING TOP OF BANK)	--- TREE DRIPLINE
--- PERENNIAL STREAM (EXISTING TOP OF BANK)	--- ACCESS PATH
--- JURISDICTIONAL WETLAND AREAS	✗ TREE TO BE REMOVED
--- LTS --- LIMITS OF TREE SURVEY	
--- PROPOSED TOP OF BANK	
--- PROPOSED CENTERLINE	
--- PROPOSED CONTOURS (0.5')	
--- LOC-TP --- LIMITS OF CLEARING/TREE PROTECTION FENCE	



**NORTHERN VIRGINIA STREAM RESTORATION BANK**  
**THE GLADE - REACH 6**

Fairfax County, Virginia

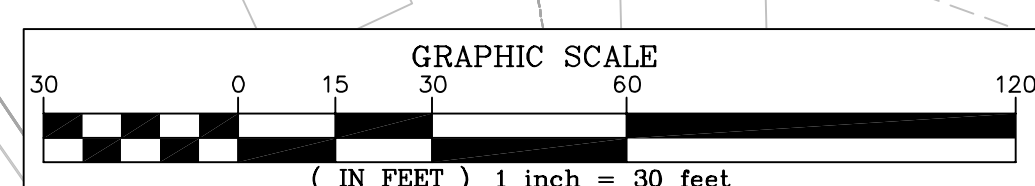
**Preliminary Plan**

Copyright © 2009 Wetland Studies and Solutions, Inc.

**Wetland**  
 Studies and Solutions, Inc.  
 5300 Wellington Branch Drive, Suite 100 • Gainesville, VA 20155  
 Phone 703 679 5600 • Fax 703 679 5601  
 wetlandstudies.com

REVISIONS									
No.	Date	Description	Rev. By	App. By	No.	Date	Description	Rev. By	App. By
1	7/24/2009	Revised Limits of Clearing and Access Path	SRP	FRG	7	7/24/2009	Added grading notes	SRP	FRG
2	7/24/2009	Revised alignment; stream lengths	SRP	FRG	9	7/24/2009	Removed rock sill	SRP	FRG
3	7/24/2009	Fine grading around bridge	SRP	FRG	10	7/31/2009	Added temporary trail, revised LOC	SRP	FRG
4	7/24/2009	Added trees to be removed (10 Total)	SRP	FRG	11	7/31/2009	Added grading note	SRP	FRG
5	7/24/2009	Added trees to be saved (19 Total)	SRP	FRG					
6	7/24/2009	Removed grading note	SRP	FRG					

DATE: JUNE 27, 2009    SCALE: 1" = 30'    C.I. = 0.5'



Boundary and Topo Source:  
 WSSI and Fairfax Digital Data

Design    Draft    Approved

SRP    SRP    FRG

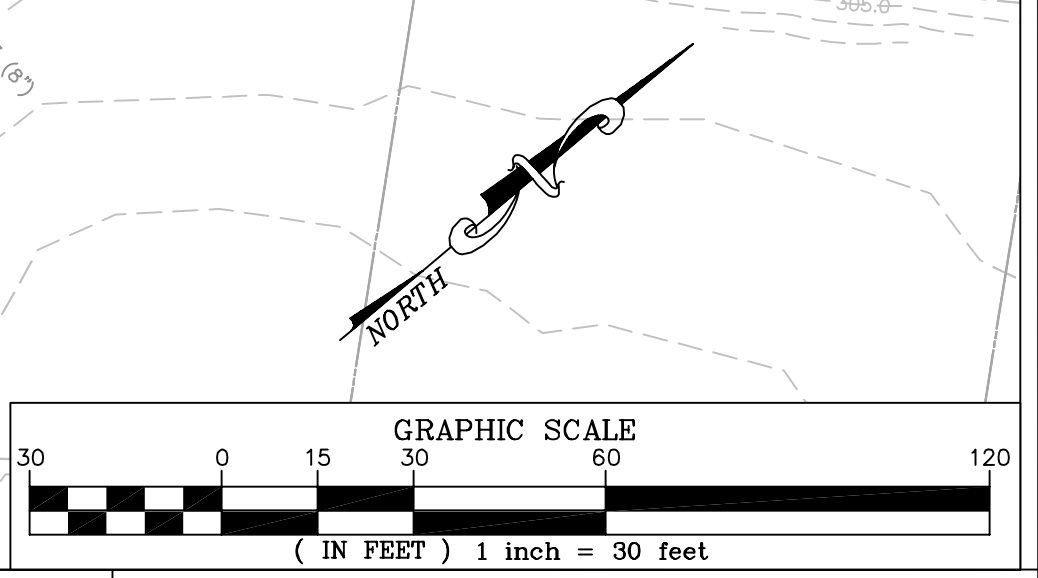
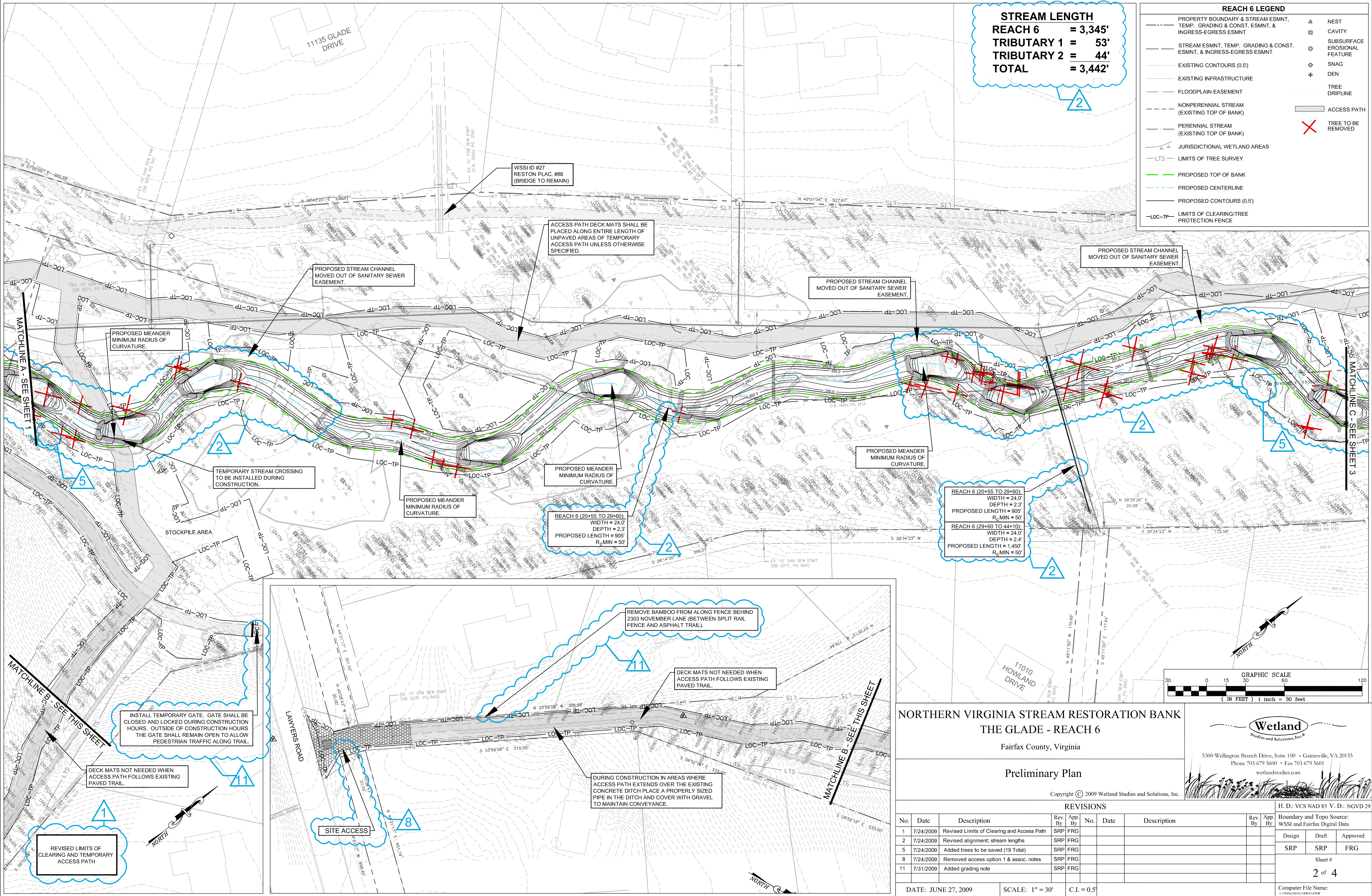
Sheet #  
**1 of 4**

Computer File Name:  
 L:\2009\2009-06-27\2009-06-27.dwg

**STREAM LENGTH**  
**REACH 6 = 3,345'**  
**TRIBUTARY 1 = 53'**  
**TRIBUTARY 2 = 44'**  
**TOTAL = 3,442'**

**REACH 6 LEGEND**

---	PROPERTY BOUNDARY & STREAM ESMNT, TEMP. GRADING & CONST. ESMNT, & INGRESS-EGRESS ESMNT	△	NEST
---	STREAM ESMNT, TEMP. GRADING & CONST. ESMNT, & INGRESS-EGRESS ESMNT	□	CAVITY
---	EXISTING CONTOURS (0.5')	○	SUBSURFACE EROSIONAL FEATURE
---	EXISTING INFRASTRUCTURE	◇	SNAG
---	FLOODPLAIN EASEMENT	+	DEN
---	NONPERENNIAL STREAM (EXISTING TOP OF BANK)	○	TREE DRIPLINE
---	PERENNIAL STREAM (EXISTING TOP OF BANK)	○	ACCESS PATH
---	JURISDICTIONAL WETLAND AREAS	✗	TREE TO BE REMOVED
---	LTS - LIMITS OF TREE SURVEY		
---	PROPOSED TOP OF BANK		
---	PROPOSED CENTERLINE		
---	PROPOSED CONTOURS (0.5')		
---	LOC-TP - LIMITS OF CLEARING/TREE PROTECTION FENCE		



**NORTHERN VIRGINIA STREAM RESTORATION BANK**  
**THE GLADE - REACH 6**

Fairfax County, Virginia

**Preliminary Plan**

Copyright © 2009 Wetland Studies and Solutions, Inc.

**Wetland**  
 Studies and Solutions, Inc.®

5300 Wellington Branch Drive, Suite 100 • Gainesville, VA 20155  
 Phone 703 679 5600 • Fax 703 679 5601  
 wetlandstudies.com

REVISIONS				REVISIONS					
No.	Date	Description	Rev. By	App. By	No.	Date	Description	Rev. By	App. By
1	7/24/2009	Revised Limits of Clearing and Access Path	SRP	FRG					
2	7/24/2009	Revised alignment; stream lengths	SRP	FRG					
5	7/24/2009	Added trees to be saved (19 Total)	SRP	FRG					
8	7/24/2009	Removed access option 1 & assoc. notes	SRP	FRG					
11	7/31/2009	Added grading note	SRP	FRG					

H. D.: VCS NAD 83 V. D.: NGVD 29  
 Boundary and Topo Source: WSSI and Fairfax Digital Data

Design	Draft	Approved
SRP	SRP	FRG

Sheet #  
**2 of 4**

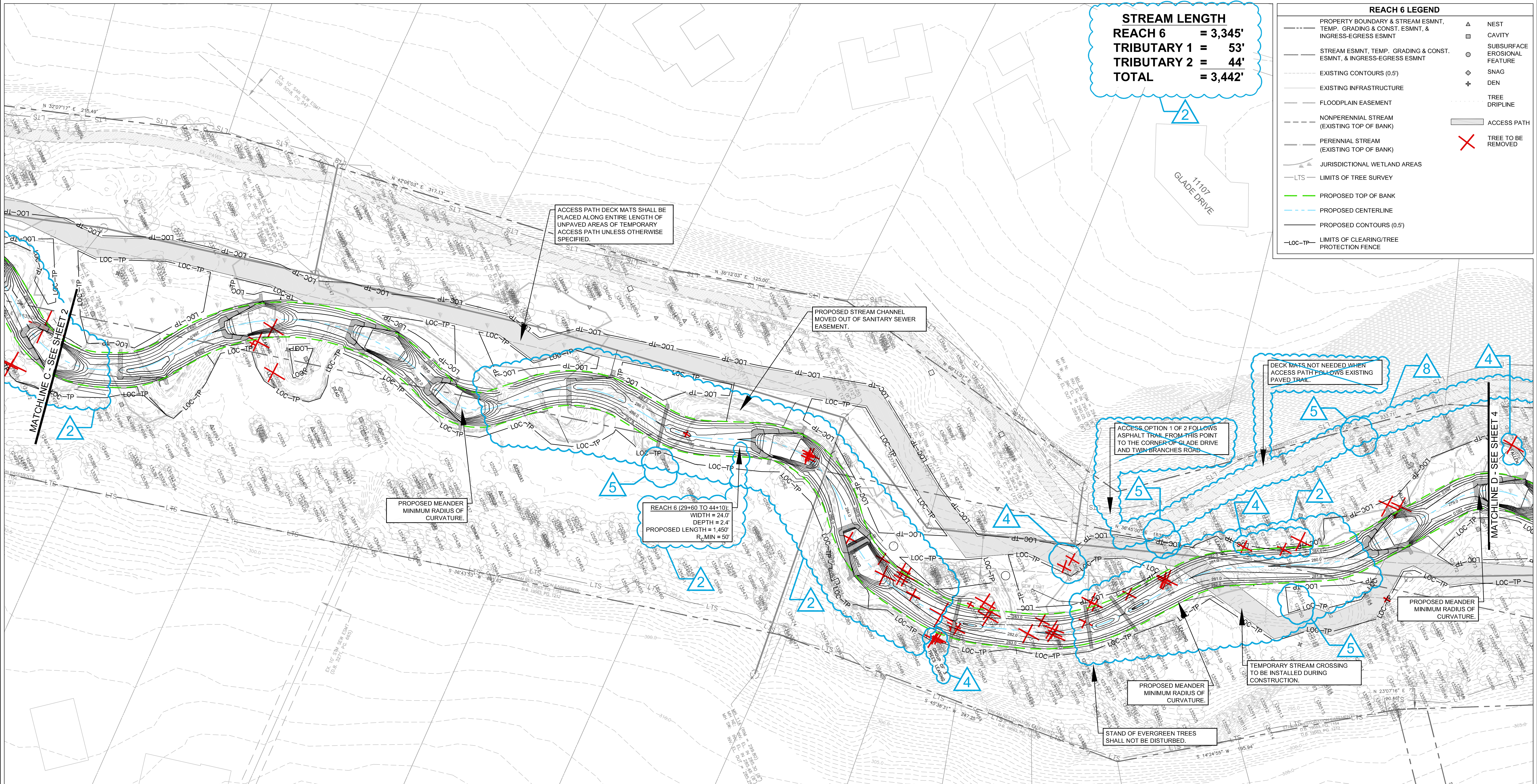
Computer File Name:  
 I:\Projects\2009\11-0001-01\11-0001-01.dwg

DATE: JUNE 27, 2009    SCALE: 1" = 30'    C.I. = 0.5'

**STREAM LENGTH**  
**REACH 6 = 3,345'**  
**TRIBUTARY 1 = 53'**  
**TRIBUTARY 2 = 44'**  
**TOTAL = 3,442'**

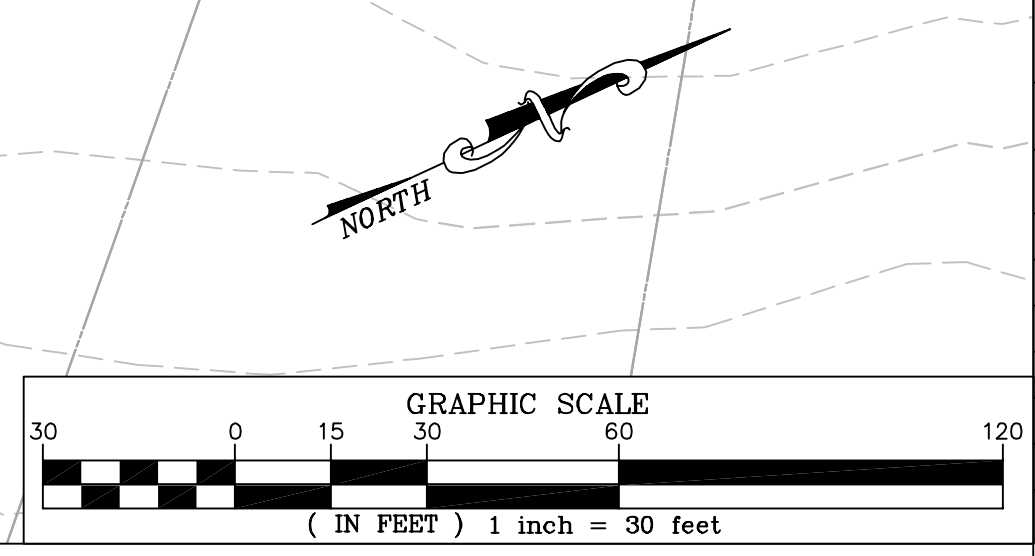
**REACH 6 LEGEND**

--- PROPERTY BOUNDARY & STREAM ESMNT, TEMP. GRADING & CONST. ESMNT, & INGRESS-EGRESS ESMNT	▲ NEST
--- STREAM ESMNT, TEMP. GRADING & CONST. ESMNT, & INGRESS-EGRESS ESMNT	□ CAVITY
--- EXISTING CONTOURS (0.5')	○ SUBSURFACE EROSIONAL FEATURE
--- EXISTING INFRASTRUCTURE	◇ SNAG
--- FLOODPLAIN EASEMENT	+ DEN
--- NONPERENNIAL STREAM (EXISTING TOP OF BANK)	○ TREE DRIPLINE
--- PERENNIAL STREAM (EXISTING TOP OF BANK)	▬ ACCESS PATH
--- JURISDICTIONAL WETLAND AREAS	✗ TREE TO BE REMOVED
--- LTS --- LIMITS OF TREE SURVEY	
--- PROPOSED TOP OF BANK	
--- PROPOSED CENTERLINE	
--- PROPOSED CONTOURS (0.5')	
--- LOC-TP --- LIMITS OF CLEARING/TREE PROTECTION FENCE	



1

REVISED LIMITS OF CLEARING AND TEMPORARY ACCESS PATH



**NORTHERN VIRGINIA STREAM RESTORATION BANK**  
**THE GLADE - REACH 6**  
 Fairfax County, Virginia

**Wetland**  
 Studies and Solutions, Inc.®

5300 Wellington Branch Drive, Suite 100 • Gainesville, VA 20155  
 Phone 703 679 5600 • Fax 703 679 5601  
 wetlandstudies.com

**Preliminary Plan**

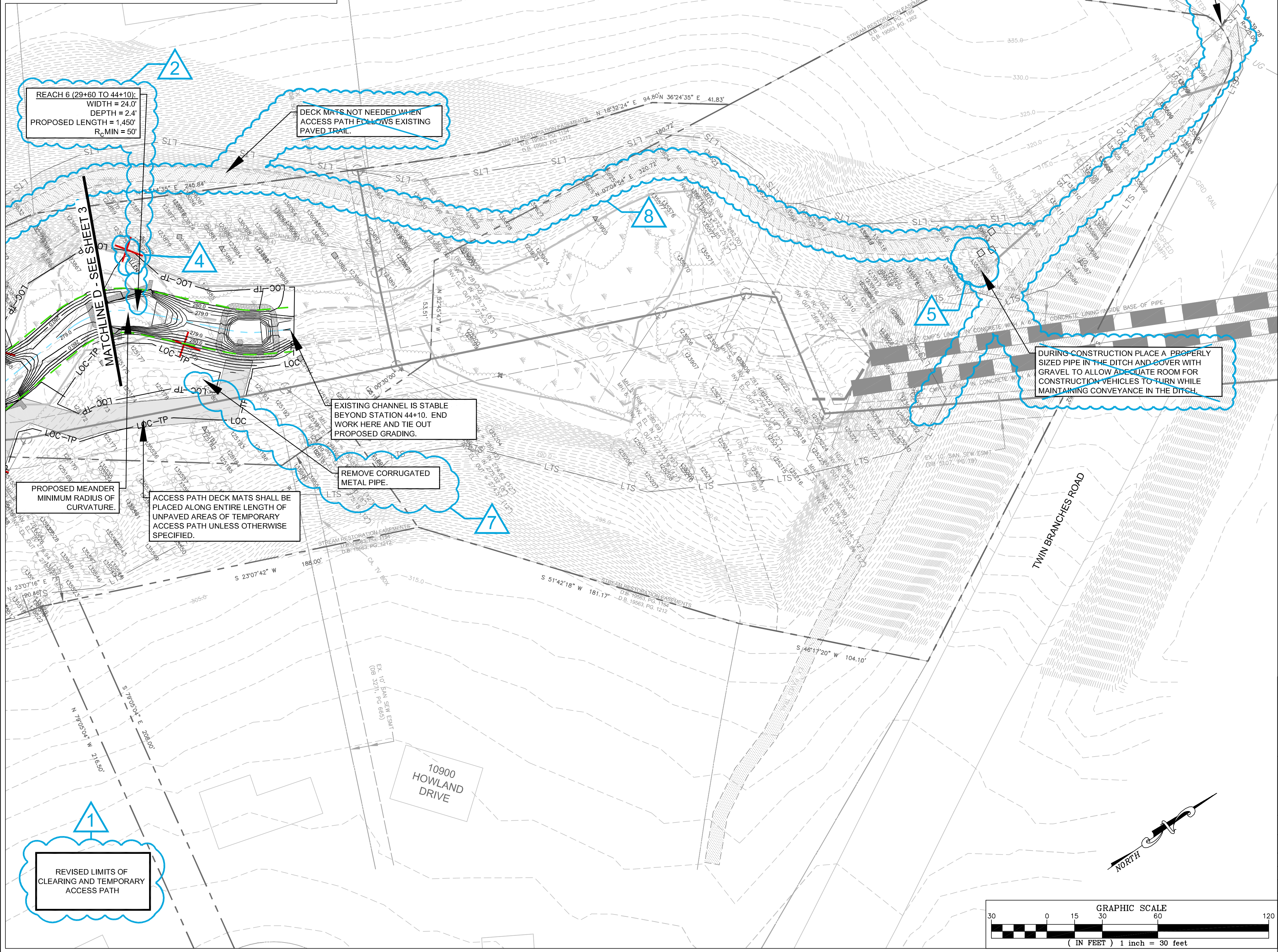
Copyright © 2009 Wetland Studies and Solutions, Inc.

REVISIONS					
No.	Date	Description	Rev. By	App. By	
1	7/24/2009	Revised Limits of Clearing and Access Path	SRP	FRG	
2	7/24/2009	Revised alignment; stream lengths	SRP	FRG	
4	7/24/2009	Added trees to be removed (10 Total)	SRP	FRG	
5	7/24/2009	Added trees to be saved (19 Total)	SRP	FRG	
8	7/24/2009	Removed access option 1 & assoc. notes	SRP	FRG	

**REACH 6 LEGEND**

--- PROPERTY BOUNDARY & STREAM ESMNT, TEMP. GRADING & CONST. ESMNT, & INGRESS-EGRESS ESMNT	▲ NEST
--- STREAM ESMNT, TEMP. GRADING & CONST. ESMNT, & INGRESS-EGRESS ESMNT	□ CAVITY
--- EXISTING CONTOURS (0.5')	○ SUBSURFACE EROSIONAL FEATURE
--- EXISTING INFRASTRUCTURE	◇ SNAG
--- FLOODPLAIN EASEMENT	+ DEN
--- NONPERENNIAL STREAM (EXISTING TOP OF BANK)	--- TREE DRIPLINE
--- PERENNIAL STREAM (EXISTING TOP OF BANK)	✗ TREE TO BE REMOVED
--- JURISDICTIONAL WETLAND AREAS	--- ACCESS PATH
--- LTS --- LIMITS OF TREE SURVEY	
--- PROPOSED TOP OF BANK	
--- PROPOSED CENTERLINE	
--- PROPOSED CONTOURS (0.5')	
--- LOC-TP --- LIMITS OF CLEARING/TREE PROTECTION FENCE	

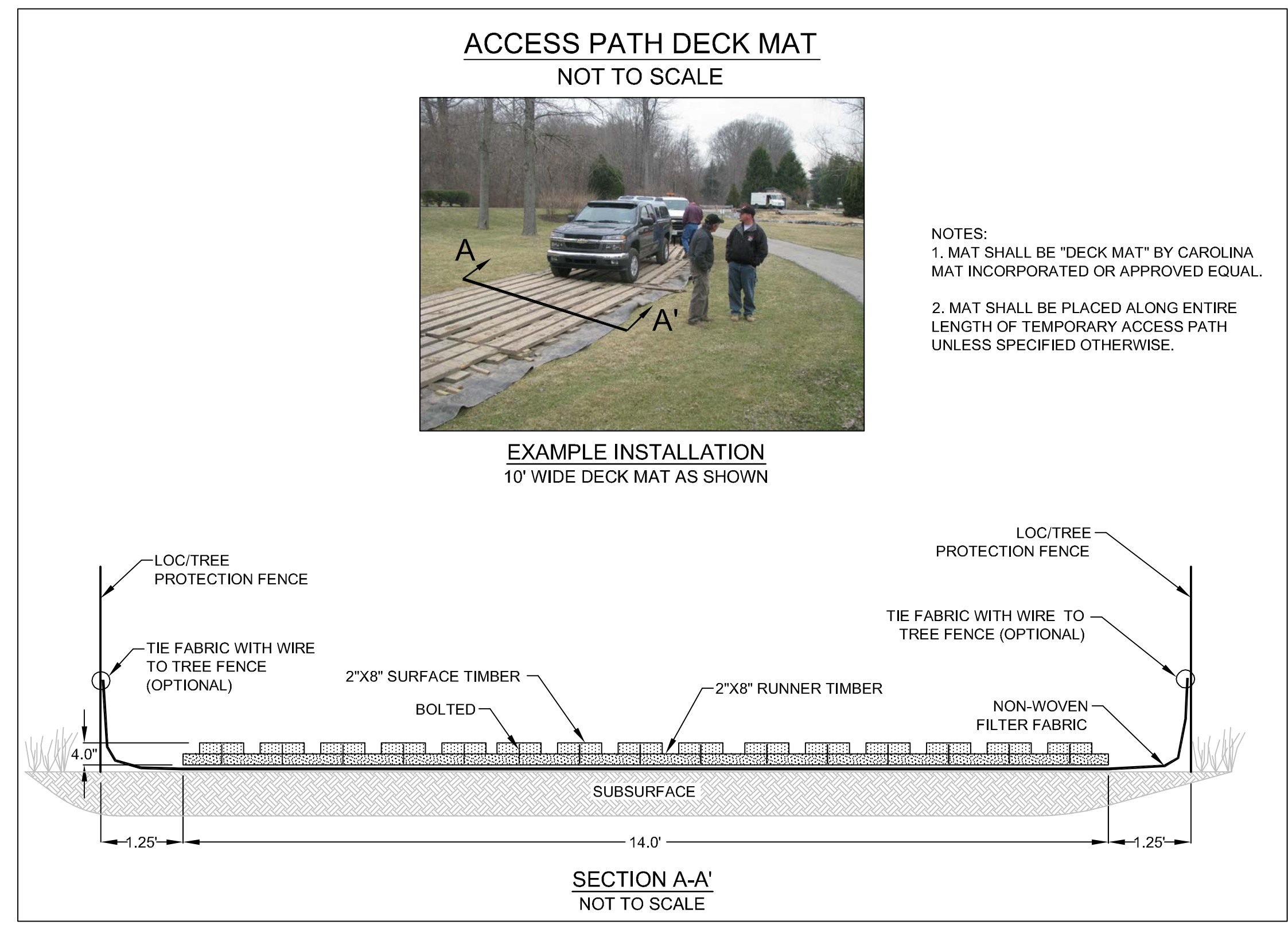
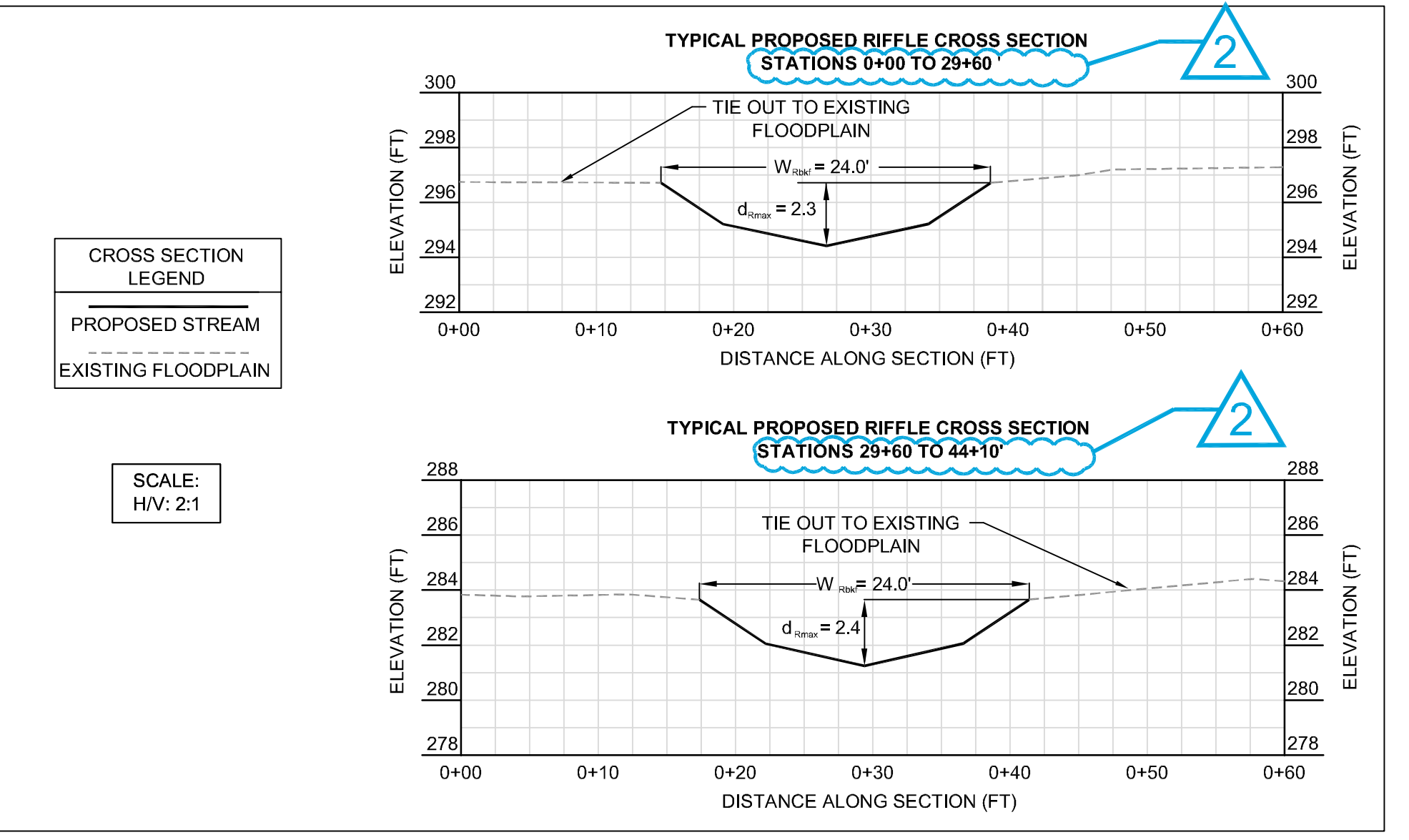
**STREAM LENGTH REACH 6 = 3,345'**  
**TRIBUTARY 1 = 53'**  
**TRIBUTARY 2 = 44'**  
**TOTAL = 3,442'**



**REACH 6 - PROPOSED BRIDGE DIMENSIONS**

REACH NAME	WSSI ID#	RESTON PLAC. #	BANKFULL WIDTH (FT)	EXISTING		PROPOSED	
				LENGTH (FT)	WIDTH (FT)	LENGTH (FT)	WIDTH (FT)
REACH 6	25	46	24	21	10	40	10
	26	89	N/A	6	9	NOT TO BE REPLACED	NOT TO BE REPLACED
	27	88	N/A	6	9	NOT TO BE REPLACED	NOT TO BE REPLACED

NOTES:  
 1. BOTTOM OF BRIDGE DECK TO BE 2 FT HIGHER THAN BANKFULL DEPTH



**NORTHERN VIRGINIA STREAM RESTORATION BANK**  
**THE GLADE - REACH 6**  
 Fairfax County, Virginia

**Preliminary Plan**

Copyright © 2009 Wetland Studies and Solutions, Inc.

**Wetland Studies and Solutions, Inc.**

5300 Wellington Branch Drive, Suite 100 • Gainesville, VA 20155  
 Phone 703 679 5600 • Fax 703 679 5601  
 wetlandstudies.com

**REVISIONS**

No.	Date	Description	Rev. By	App. By	No.	Date	Description	Rev. By	App. By
1	7/24/2009	Revised Limits of Clearing and Access Path	SRP	FRG					
2	7/24/2009	Revised alignment; stream lengths	SRP	FRG					
4	7/24/2009	Added trees to be removed (10 Total)	SRP	FRG					
5	7/24/2009	Added trees to be saved (19 Total)	SRP	FRG					
7	7/24/2009	Added grading note	SRP	FRG					
8	7/24/2009	Removed access option 1 & assoc. notes	SRP	FRG					

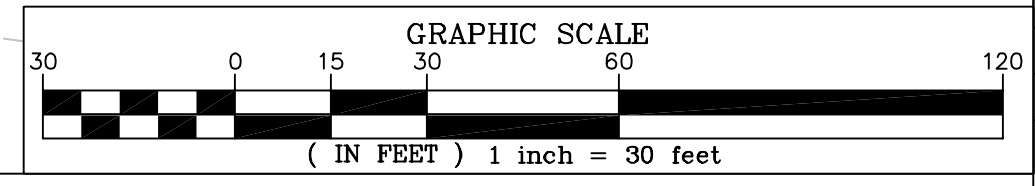
DATE: JUNE 27, 2009    SCALE: 1" = 30'    C.I. = 0.5'

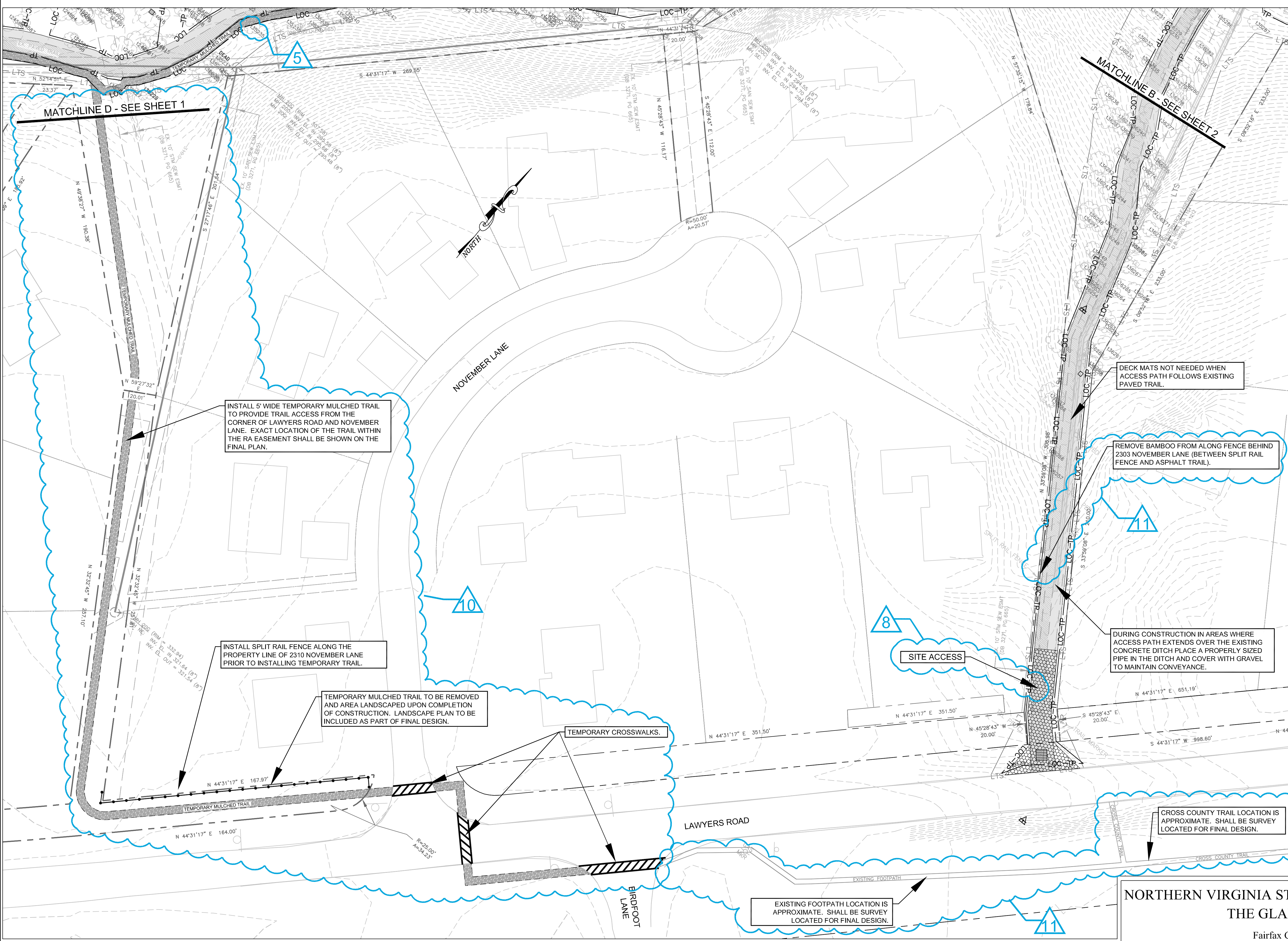
H. D.: VCS NAD 83 V. D.: NGVD 29  
 Boundary and Topo Source: WSSI and Fairfax Digital Data

Design	Draft	Approved
SRP	SRP	FRG

Sheet #  
**4 of 4**

Computer File Name:  
 L:\2009\2009-06-01-01-01-01.dwg





**REACH 6 LEGEND**

--- PROPERTY BOUNDARY & STREAM ESMNT, TEMP. GRADING & CONST. ESMNT, & INGRESS-EGRESS ESMNT	▲ NEST
--- STREAM ESMNT, TEMP. GRADING & CONST. ESMNT, & INGRESS-EGRESS ESMNT	□ CAVITY
--- EXISTING CONTOURS (0.5')	○ SUBSURFACE EROSIONAL FEATURE
--- EXISTING INFRASTRUCTURE	◇ SNAG
--- FLOODPLAIN EASEMENT	+ DEN
--- NONPERENNIAL STREAM (EXISTING TOP OF BANK)	○ TREE DRIPLINE
--- PERENNIAL STREAM (EXISTING TOP OF BANK)	✗ TREE TO BE REMOVED
--- JURISDICTIONAL WETLAND AREAS	
--- LTS --- LIMITS OF TREE SURVEY	
--- PROPOSED TOP OF BANK	
--- PROPOSED CENTERLINE	
--- PROPOSED CONTOURS (0.5')	
--- LOC-TP --- LIMITS OF CLEARING/TREE PROTECTION FENCE	

**STREAM LENGTH**  
**REACH 6 = 3,345'**  
**TRIBUTARY 1 = 53'**  
**TRIBUTARY 2 = 44'**  
**TOTAL = 3,442'**

INSTALL 5' WIDE TEMPORARY MULCHED TRAIL TO PROVIDE TRAIL ACCESS FROM THE CORNER OF LAWYERS ROAD AND NOVEMBER LANE. EXACT LOCATION OF THE TRAIL WITHIN THE RA EASEMENT SHALL BE SHOWN ON THE FINAL PLAN.

INSTALL SPLIT RAIL FENCE ALONG THE PROPERTY LINE OF 2310 NOVEMBER LANE PRIOR TO INSTALLING TEMPORARY TRAIL.

TEMPORARY MULCHED TRAIL TO BE REMOVED AND AREA LANDSCAPED UPON COMPLETION OF CONSTRUCTION. LANDSCAPE PLAN TO BE INCLUDED AS PART OF FINAL DESIGN.

TEMPORARY CROSSWALKS.

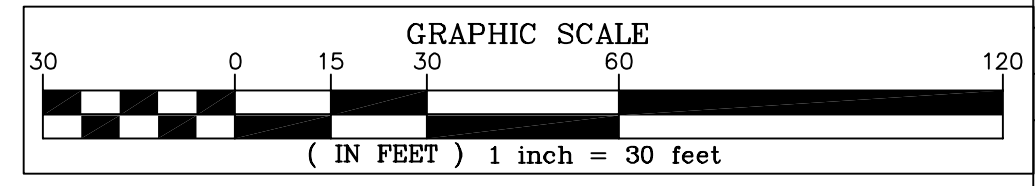
EXISTING FOOTPATH LOCATION IS APPROXIMATE. SHALL BE SURVEY LOCATED FOR FINAL DESIGN.

DECK MATS NOT NEEDED WHEN ACCESS PATH FOLLOWS EXISTING PAVED TRAIL.

REMOVE BAMBOO FROM ALONG FENCE BEHIND 2303 NOVEMBER LANE (BETWEEN SPLIT RAIL FENCE AND ASPHALT TRAIL).

DURING CONSTRUCTION IN AREAS WHERE ACCESS PATH EXTENDS OVER THE EXISTING CONCRETE DITCH PLACE A PROPERLY SIZED PIPE IN THE DITCH AND COVER WITH GRAVEL TO MAINTAIN CONVEYANCE.

CROSS COUNTY TRAIL LOCATION IS APPROXIMATE. SHALL BE SURVEY LOCATED FOR FINAL DESIGN.



**NORTHERN VIRGINIA STREAM RESTORATION BANK**  
**THE GLADE - REACH 6**

Fairfax County, Virginia

**Preliminary Plan**

Copyright © 2009 Wetland Studies and Solutions, Inc.

**Wetland**  
 Studies and Solutions, Inc.  
 5300 Wellington Branch Drive, Suite 100 • Gainesville, VA 20155  
 Phone 703 679 5600 • Fax 703 679 5601  
 wetlandstudies.com

REVISIONS									
No.	Date	Description	Rev. By	App. By	No.	Date	Description	Rev. By	App. By
2	7/24/2009	Revised alignment; stream lengths	SRP	FRG					
5	7/24/2009	Added trees to be saved (19 Total)	SRP	FRG					
8	7/24/2009	Removed access option 1 & assoc. notes	SRP	FRG					
10	7/31/2009	Added temp. mulch trail, revised LOC	SRP	FRG					
11	7/31/2009	Added grading note	SRP	FRG					
12	7/31/2009	Added new plan sheet	SRP	FRG					

DATE: JUNE 27, 2009      SCALE: 1" = 30'      C.I. = 0.5'

H. D.: VCS NAD 83 V. D.: NGVD 29  
 Boundary and Topo Source: WSSI and Fairfax Digital Data  
 Design    Draft    Approved  
 SRP    SRP    FRG  
 Sheet #  
**124A** of 4  
 Computer File Name: 1-2009-2009-000-000