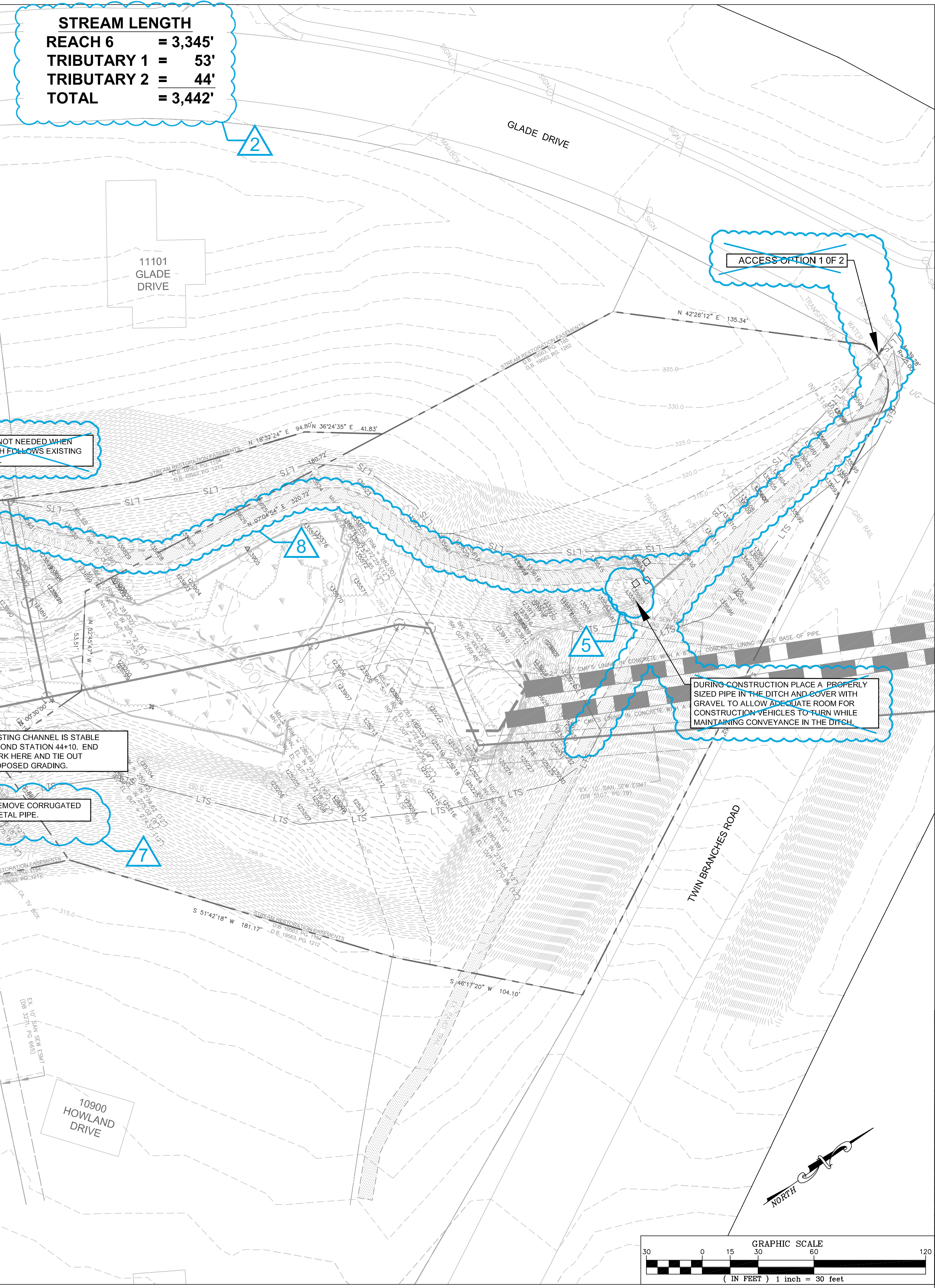


REACH 6 LEGEND	
--- PROPERTY BOUNDARY & STREAM ESMNT, TEMP. GRADING & CONST. ESMNT, & INGRESS-EGRESS ESMNT	▲ NEST
--- STREAM ESMNT, TEMP. GRADING & CONST. ESMNT, & INGRESS-EGRESS ESMNT	□ CAVITY
--- EXISTING CONTOURS (0.5')	○ SUBSURFACE EROSIONAL FEATURE
--- EXISTING INFRASTRUCTURE	◇ SNAG
--- FLOODPLAIN EASEMENT	+ DEN
--- NONPERENNIAL STREAM (EXISTING TOP OF BANK)	--- TREE DRIPLINE
--- PERENNIAL STREAM (EXISTING TOP OF BANK)	--- ACCESS PATH
--- JURISDICTIONAL WETLAND AREAS	✗ TREE TO BE REMOVED
--- LTS --- LIMITS OF TREE SURVEY	
--- PROPOSED TOP OF BANK	
--- PROPOSED CENTERLINE	
--- PROPOSED CONTOURS (0.5')	
--- LOC-TP --- LIMITS OF CLEARING/TREE PROTECTION FENCE	



STREAM LENGTH
REACH 6 = 3,345'
TRIBUTARY 1 = 53'
TRIBUTARY 2 = 44'
TOTAL = 3,442'

REACH 6 (29+60 TO 44+10):
 WIDTH = 24.0'
 DEPTH = 2.4'
 PROPOSED LENGTH = 1,450'
 R_c MIN = 50'

DECK MATS NOT NEEDED WHEN ACCESS PATH FOLLOWS EXISTING PAVED TRAIL.

DURING CONSTRUCTION PLACE A PROPERLY SIZED PIPE IN THE DITCH AND COVER WITH GRAVEL TO ALLOW ADEQUATE ROOM FOR CONSTRUCTION VEHICLES TO TURN WHILE MAINTAINING CONVEYANCE IN THE DITCH.

EXISTING CHANNEL IS STABLE BEYOND STATION 44+10. END WORK HERE AND TIE OUT PROPOSED GRADING.

REMOVE CORRUGATED METAL PIPE.

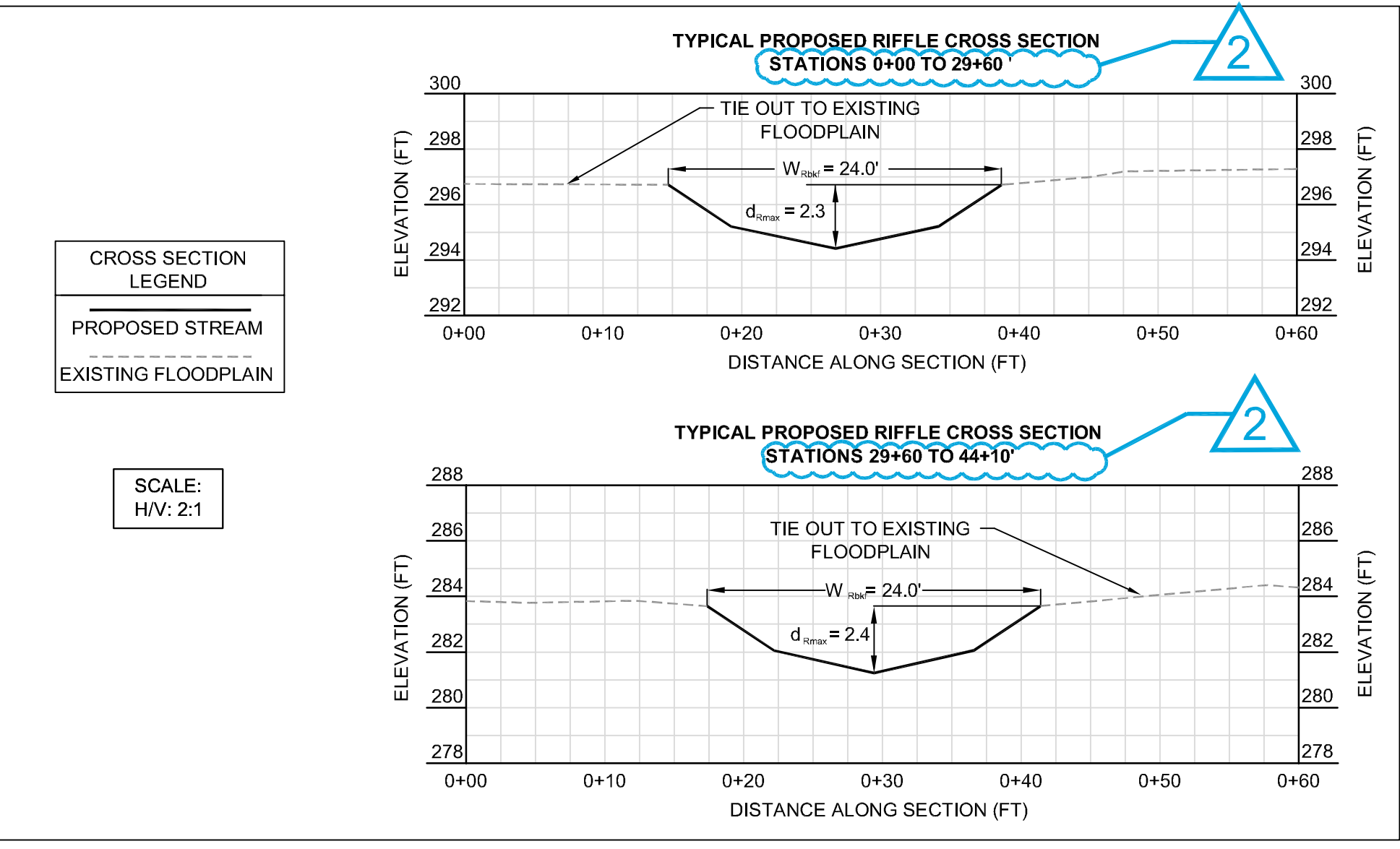
ACCESS PATH DECK MATS SHALL BE PLACED ALONG ENTIRE LENGTH OF UNPAVED AREAS OF TEMPORARY ACCESS PATH UNLESS OTHERWISE SPECIFIED.

PROPOSED MEANDER MINIMUM RADIUS OF CURVATURE.

REVISED LIMITS OF CLEARING AND TEMPORARY ACCESS PATH

REACH 6 - PROPOSED BRIDGE DIMENSIONS							
REACH NAME	WSSI ID#	RESTON PLAC. #	BANKFULL WIDTH (FT)	EXISTING		PROPOSED	
				LENGTH (FT)	WIDTH (FT)	LENGTH (FT)	WIDTH (FT)
REACH 6	25	46	24	21	10	40	10
	26	89	N/A	6	9	NOT TO BE REPLACED	NOT TO BE REPLACED
	27	88	N/A	6	9	NOT TO BE REPLACED	NOT TO BE REPLACED

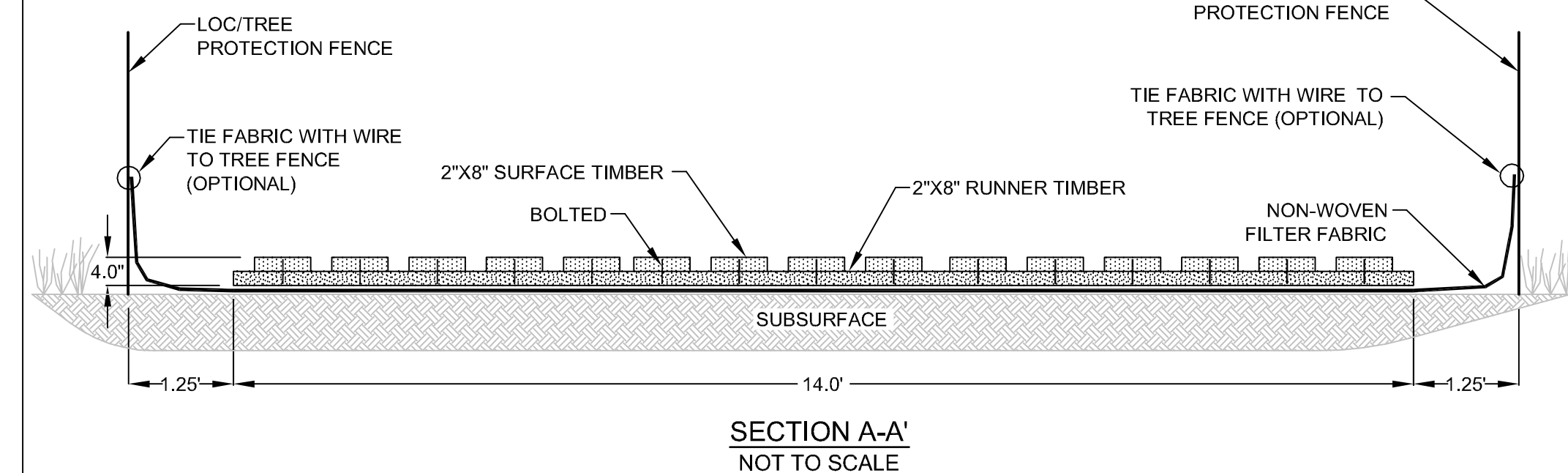
NOTES:
 1. BOTTOM OF BRIDGE DECK TO BE 2 FT HIGHER THAN BANKFULL DEPTH



ACCESS PATH DECK MAT
 NOT TO SCALE

EXAMPLE INSTALLATION
 10' WIDE DECK MAT AS SHOWN

NOTES:
 1. MAT SHALL BE "DECK MAT" BY CAROLINA MAT INCORPORATED OR APPROVED EQUAL.
 2. MAT SHALL BE PLACED ALONG ENTIRE LENGTH OF TEMPORARY ACCESS PATH UNLESS SPECIFIED OTHERWISE.



NORTHERN VIRGINIA STREAM RESTORATION BANK
 THE GLADE - REACH 6
 Fairfax County, Virginia

Preliminary Plan

Copyright © 2009 Wetland Studies and Solutions, Inc.

5300 Wellington Branch Drive, Suite 100 • Gainesville, VA 20155
 Phone 703 679 5600 • Fax 703 679 5601
 wetlandstudies.com

REVISIONS				REVISIONS					
No.	Date	Description	Rev. By	App. By	No.	Date	Description	Rev. By	App. By
1	7/24/2009	Revised Limits of Clearing and Access Path	SRP	FRG					
2	7/24/2009	Revised alignment; stream lengths	SRP	FRG					
4	7/24/2009	Added trees to be removed (10 Total)	SRP	FRG					
5	7/24/2009	Added trees to be saved (19 Total)	SRP	FRG					
7	7/24/2009	Added grading note	SRP	FRG					
8	7/24/2009	Removed access option 1 & assoc. notes	SRP	FRG					

DATE: JUNE 27, 2009 SCALE: 1" = 30' C.I. = 0.5'

H. D.: VCS NAD 83 V. D.: NGVD 29
 Boundary and Topo Source:
 WSSI and Fairfax Digital Data

Design	Draft	Approved
SRP	SRP	FRG

Sheet #
4 of 4

Computer File Name:
 I:\2009\2009-06-01-01-01-01.dwg