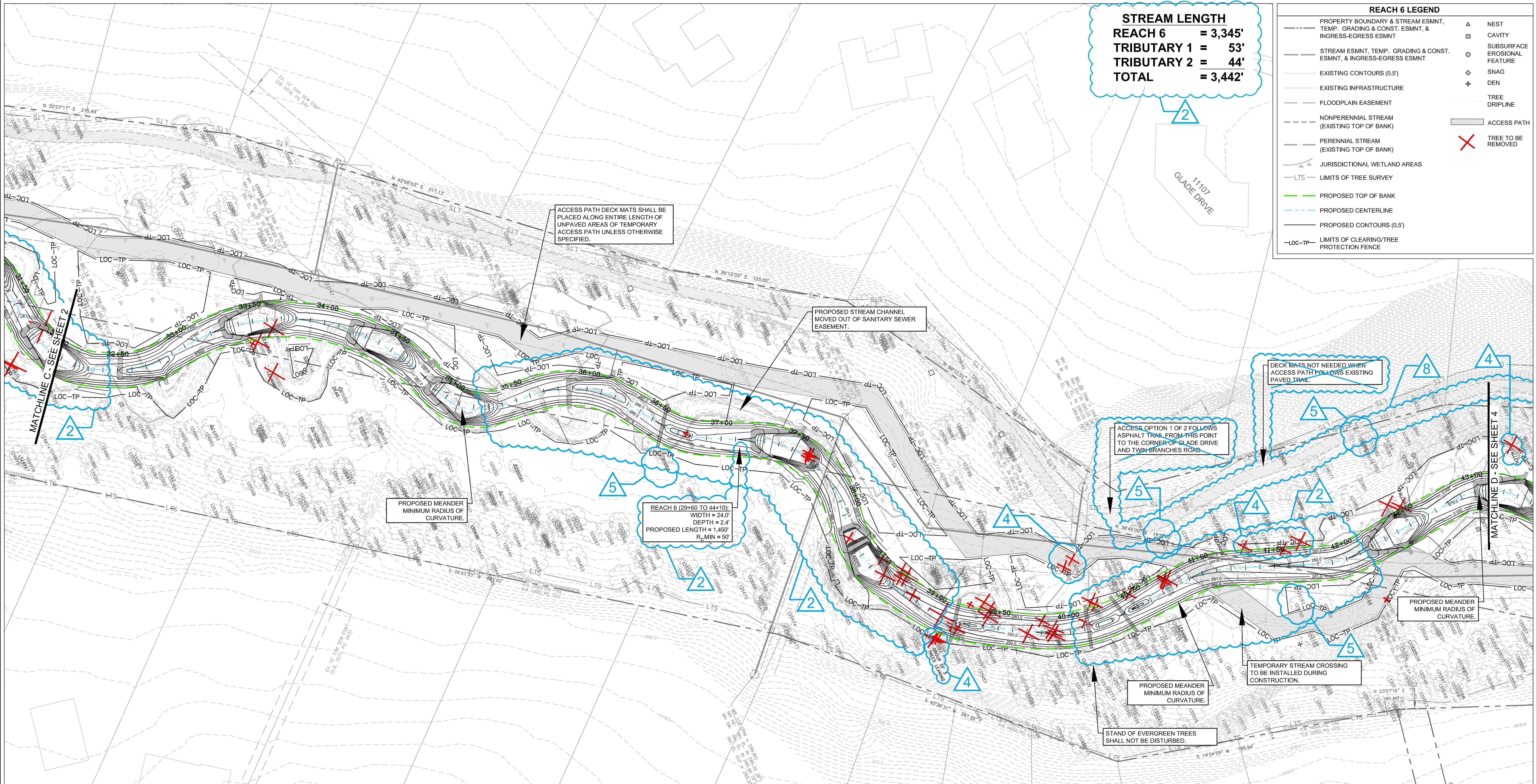


**STREAM LENGTH**  
**REACH 6 = 3,345'**  
**TRIBUTARY 1 = 53'**  
**TRIBUTARY 2 = 44'**  
**TOTAL = 3,442'**

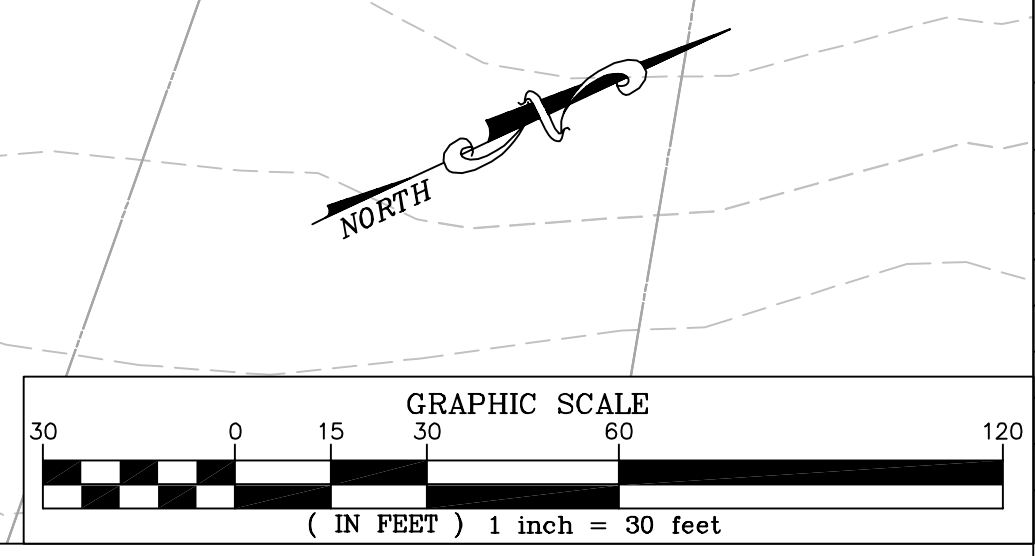
**REACH 6 LEGEND**

--- PROPERTY BOUNDARY & STREAM ESMNT, TEMP. GRADING & CONST. ESMNT, & INGRESS-EGRESS ESMNT	▲ NEST
--- STREAM ESMNT, TEMP. GRADING & CONST. ESMNT, & INGRESS-EGRESS ESMNT	□ CAVITY
--- EXISTING CONTOURS (0.5')	○ SUBSURFACE EROSIONAL FEATURE
--- EXISTING INFRASTRUCTURE	◇ SNAG
--- FLOODPLAIN EASEMENT	+ DEN
--- NONPERENNIAL STREAM (EXISTING TOP OF BANK)	○ TREE DRIPLINE
--- PERENNIAL STREAM (EXISTING TOP OF BANK)	▬ ACCESS PATH
--- JURISDICTIONAL WETLAND AREAS	✗ TREE TO BE REMOVED
--- LTS --- LIMITS OF TREE SURVEY	
--- PROPOSED TOP OF BANK	
--- PROPOSED CENTERLINE	
--- PROPOSED CONTOURS (0.5')	
--- LOC-TP --- LIMITS OF CLEARING/TREE PROTECTION FENCE	



1

REVISED LIMITS OF CLEARING AND TEMPORARY ACCESS PATH



NORTHERN VIRGINIA STREAM RESTORATION BANK  
 THE GLADE - REACH 6  
 Fairfax County, Virginia

Preliminary Plan

Copyright © 2009 Wetland Studies and Solutions, Inc.

**Wetland**  
 Studies and Solutions, Inc.®

5300 Wellington Branch Drive, Suite 100 • Gainesville, VA 20155  
 Phone 703 679 5600 • Fax 703 679 5601  
 wetlandstudies.com

REVISIONS				REVISIONS					
No.	Date	Description	Rev. By	App. By	No.	Date	Description	Rev. By	App. By
1	7/24/2009	Revised Limits of Clearing and Access Path	SRP	FRG					
2	7/24/2009	Revised alignment; stream lengths	SRP	FRG					
4	7/24/2009	Added trees to be removed (10 Total)	SRP	FRG					
5	7/24/2009	Added trees to be saved (19 Total)	SRP	FRG					
8	7/24/2009	Removed access option 1 & assoc. notes	SRP	FRG					

H. D.: VCS NAD 83 V. D.: NGVD 29  
 Boundary and Topo Source: WSSI and Fairfax Digital Data

Design	Draft	Approved
SRP	SRP	FRG

Sheet #  
**3 of 4**

Computer File Name:  
 I:\2009\2009-06-09-01-01.dwg

DATE: JUNE 27, 2009    SCALE: 1" = 30'    C.I. = 0.5'