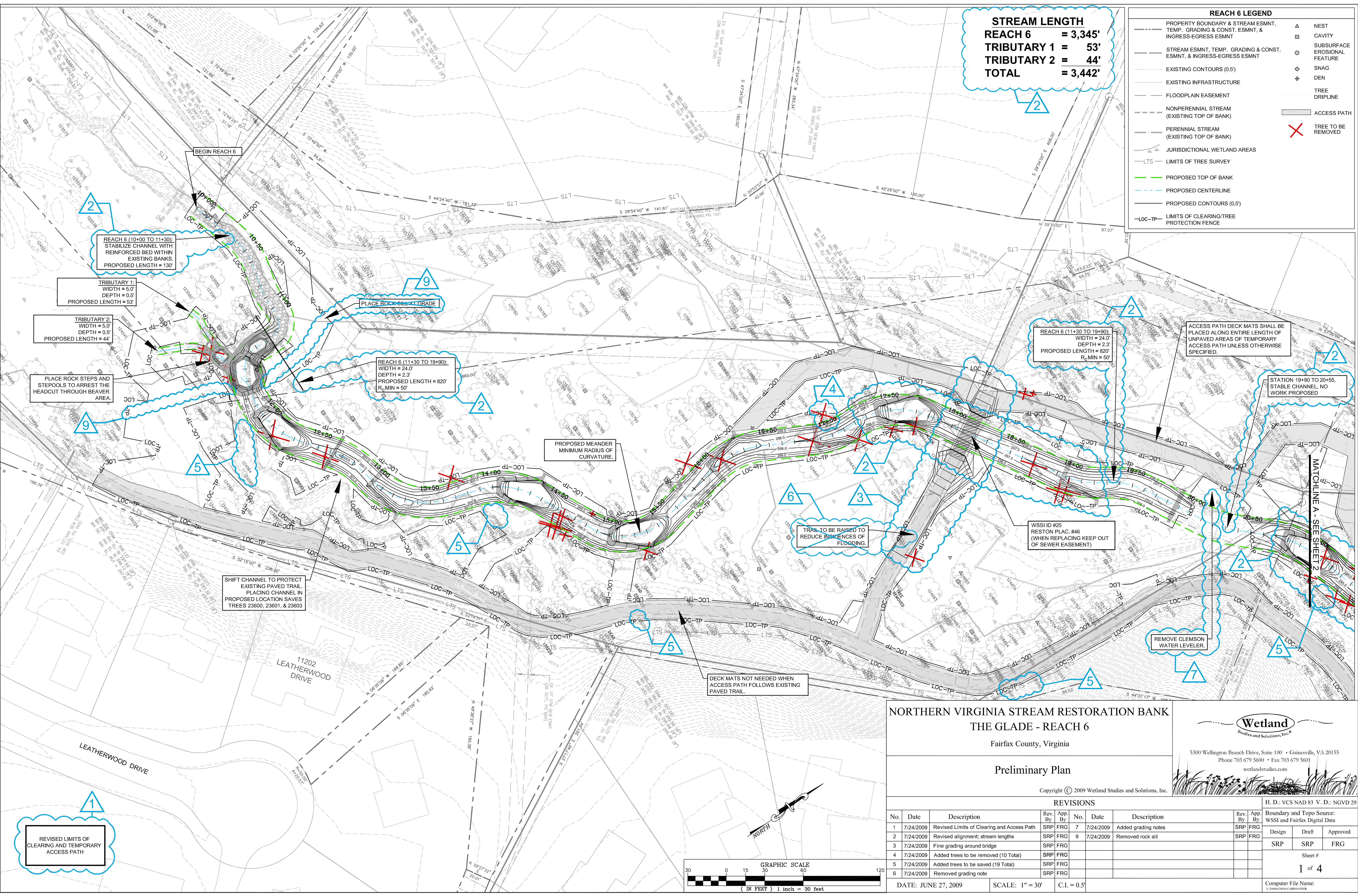


**STREAM LENGTH**  
**REACH 6 = 3,345'**  
**TRIBUTARY 1 = 53'**  
**TRIBUTARY 2 = 44'**  
**TOTAL = 3,442'**

**REACH 6 LEGEND**

|     |  |   |                              |
|-----|--|---|------------------------------|
| --- | PROPERTY BOUNDARY & STREAM ESMNT, TEMP. GRADING & CONST. ESMNT, & INGRESS-EGRESS ESMNT | △ | NEST                         |
| --- | STREAM ESMNT, TEMP. GRADING & CONST. ESMNT, & INGRESS-EGRESS ESMNT                     | □ | CAVITY                       |
| --- | EXISTING CONTOURS (0.5')   | ○ | SUBSURFACE EROSIONAL FEATURE |
| --- | EXISTING INFRASTRUCTURE  | ◇ | SNAG                         |
| --- | FLOODPLAIN EASEMENT  | + | DEN                          |
| --- | NONPERENNIAL STREAM (EXISTING TOP OF BANK)   | ○ | TREE DRIPLINE                |
| --- | PERENNIAL STREAM (EXISTING TOP OF BANK)  | ○ | ACCESS PATH                  |
| --- | JURISDICTIONAL WETLAND AREAS   | ✗ | TREE TO BE REMOVED           |
| --- | LTS - LIMITS OF TREE SURVEY  |   |                              |
| --- | PROPOSED TOP OF BANK   |   |                              |
| --- | PROPOSED CENTERLINE  |   |                              |
| --- | PROPOSED CONTOURS (0.5')   |   |                              |
| --- | LOC-TP - LIMITS OF CLEARING/TREE PROTECTION FENCE                                      |   |                              |



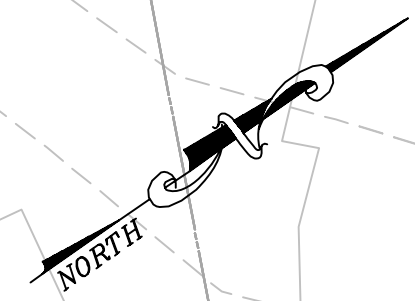
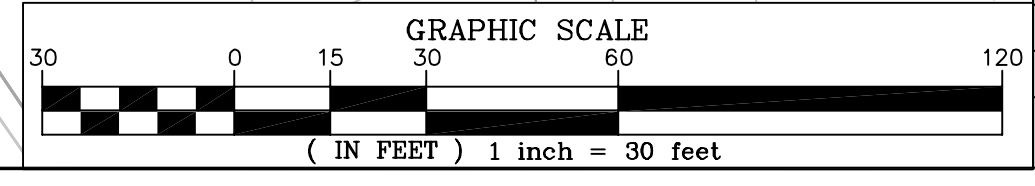
**NORTHERN VIRGINIA STREAM RESTORATION BANK**  
**THE GLADE - REACH 6**  
 Fairfax County, Virginia

**Wetland**  
 Studies and Solutions, Inc.  
 5300 Wellington Branch Drive, Suite 100 • Gainesville, VA 20155  
 Phone 703 679 5600 • Fax 703 679 5601  
 wetlandstudies.com

**Preliminary Plan**

Copyright © 2009 Wetland Studies and Solutions, Inc.

| REVISIONS |           |  |         |         |     |           |                     |         |         |
|-----------|-----------|--|---------|---------|-----|-----------|---------------------|---------|---------|
| No.       | Date      | Description                                | Rev. By | App. By | No. | Date      | Description         | Rev. By | App. By |
| 1         | 7/24/2009 | Revised Limits of Clearing and Access Path | SRP     | FRG     | 7   | 7/24/2009 | Added grading notes | SRP     | FRG     |
| 2         | 7/24/2009 | Revised alignment; stream lengths          | SRP     | FRG     | 9   | 7/24/2009 | Removed rock sill   | SRP     | FRG     |
| 3         | 7/24/2009 | Fine grading around bridge                 | SRP     | FRG     |     |           |                     |         |         |
| 4         | 7/24/2009 | Added trees to be removed (10 Total)       | SRP     | FRG     |     |           |                     |         |         |
| 5         | 7/24/2009 | Added trees to be saved (19 Total)         | SRP     | FRG     |     |           |                     |         |         |
| 6         | 7/24/2009 | Removed grading note                       | SRP     | FRG     |     |           |                     |         |         |



REVISED LIMITS OF CLEARING AND TEMPORARY ACCESS PATH

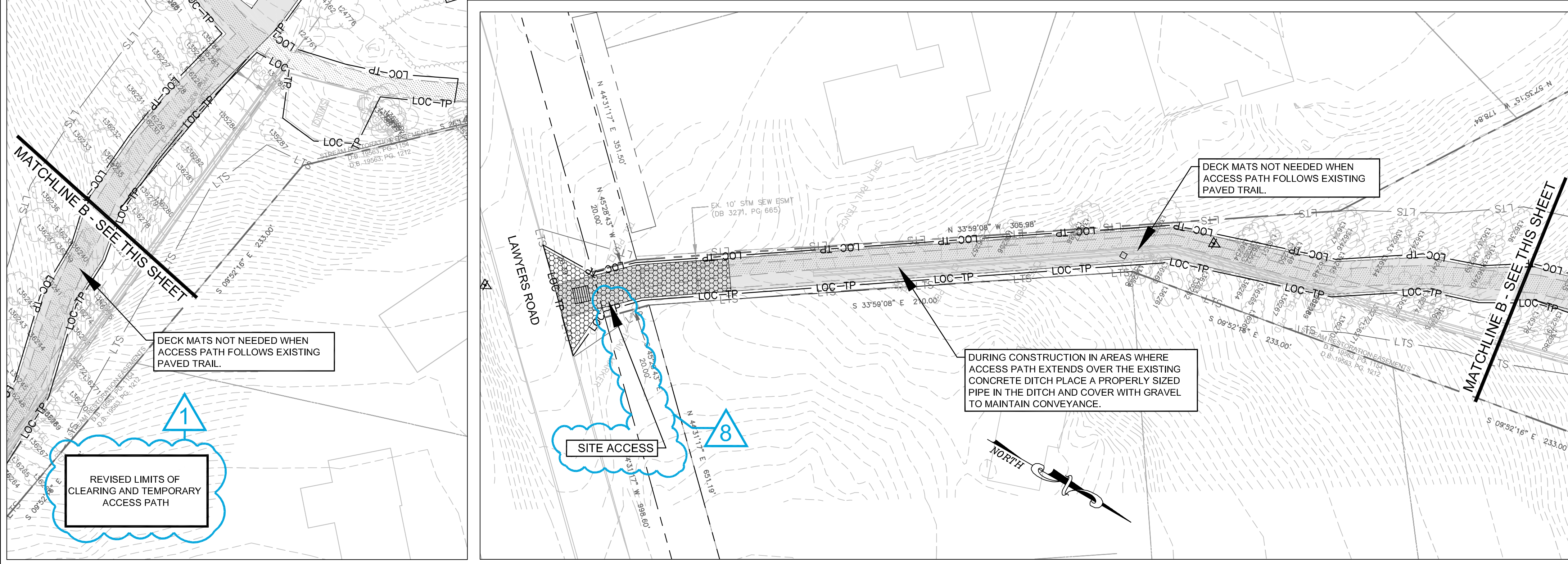
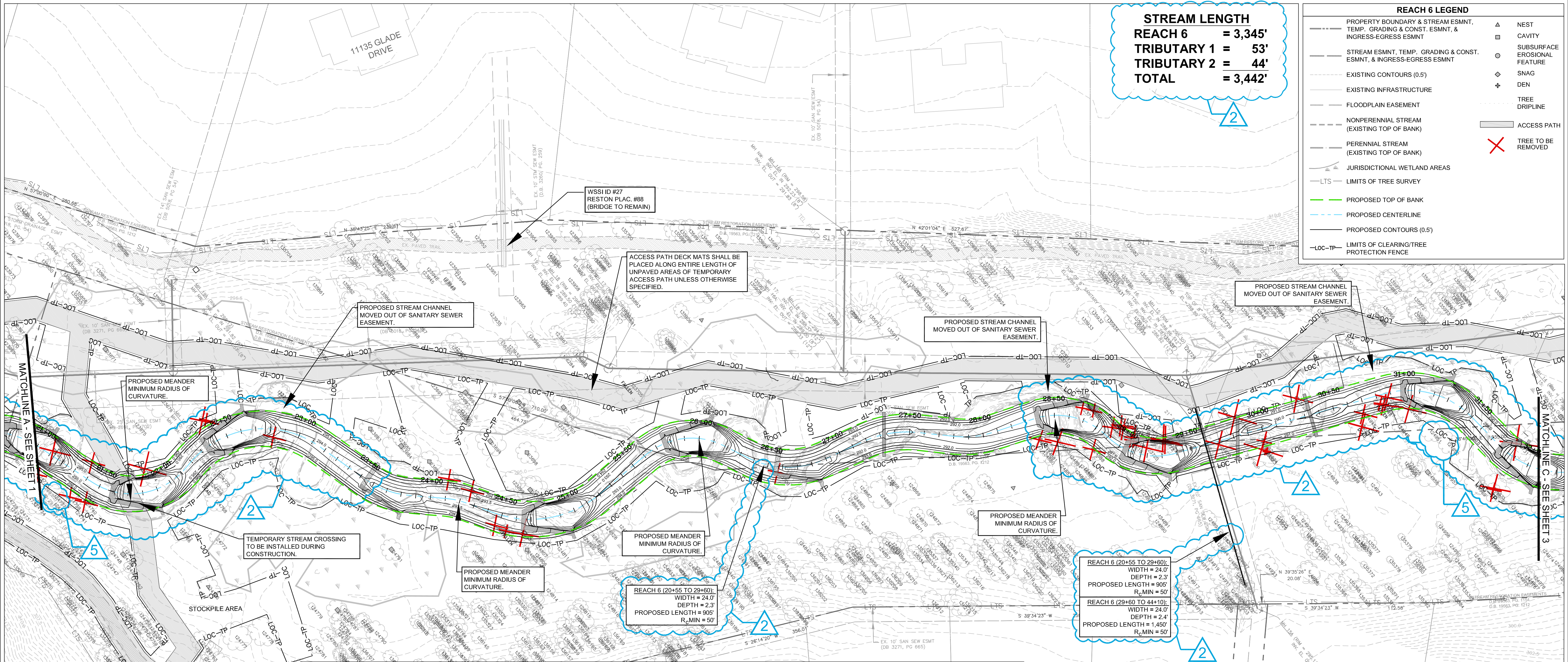
H. D.: VCS NAD 83 V. D.: NGVD 29  
 Boundary and Topo Source: WSSI and Fairfax Digital Data  
 Design Draft Approved  
 SRP SRP FRG  
 Sheet #  
**1 of 4**  
 Computer File Name: I:\2009\2009-06-09-04-04

DATE: JUNE 27, 2009 SCALE: 1" = 30' C.I. = 0.5'

**STREAM LENGTH**  
**REACH 6 = 3,345'**  
**TRIBUTARY 1 = 53'**  
**TRIBUTARY 2 = 44'**  
**TOTAL = 3,442'**

**REACH 6 LEGEND**

|  |                                |
|--|--------------------------------|
| --- PROPERTY BOUNDARY & STREAM ESMNT, TEMP. GRADING & CONST. ESMNT, & INGRESS-EGRESS ESMNT | ▲ NEST                         |
| --- STREAM ESMNT, TEMP. GRADING & CONST. ESMNT, & INGRESS-EGRESS ESMNT                     | □ CAVITY                       |
| --- EXISTING CONTOURS (0.5')   | ○ SUBSURFACE EROSIONAL FEATURE |
| --- EXISTING INFRASTRUCTURE  | ◇ SNAG                         |
| --- FLOODPLAIN EASEMENT  | + DEN                          |
| --- NONPERENNIAL STREAM (EXISTING TOP OF BANK)   | ○ TREE DRIPLINE                |
| --- PERENNIAL STREAM (EXISTING TOP OF BANK)  | ▬ ACCESS PATH                  |
| --- JURISDICTIONAL WETLAND AREAS   | ✗ TREE TO BE REMOVED           |
| --- LTS --- LIMITS OF TREE SURVEY  |                                |
| --- PROPOSED TOP OF BANK   |                                |
| --- PROPOSED CENTERLINE  |                                |
| --- EXISTING CONTOURS (0.5')   |                                |
| --- LOC-TP --- LIMITS OF CLEARING/TREE PROTECTION FENCE                                    |                                |



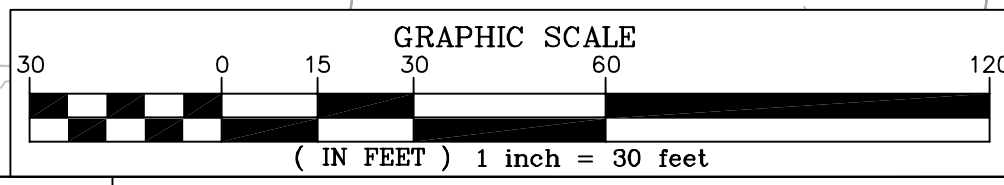
**NORTHERN VIRGINIA STREAM RESTORATION BANK**  
**THE GLADE - REACH 6**

Fairfax County, Virginia

**Preliminary Plan**

Copyright © 2009 Wetland Studies and Solutions, Inc.

**Wetland**  
 Studies and Solutions, Inc.  
 5300 Wellington Branch Drive, Suite 100 • Gainesville, VA 20155  
 Phone 703 679 5600 • Fax 703 679 5601  
 wetlandstudies.com



| REVISIONS |           |  |         |         |  |
|-----------|-----------|--|---------|---------|--|
| No.       | Date      | Description                                | Rev. By | App. By |  |
| 1         | 7/24/2009 | Revised Limits of Clearing and Access Path | SRP     | FRG     |  |
| 2         | 7/24/2009 | Revised alignment; stream lengths          | SRP     | FRG     |  |
| 5         | 7/24/2009 | Added trees to be saved (19 Total)         | SRP     | FRG     |  |
| 8         | 7/24/2009 | Removed access option 1 & assoc. notes     | SRP     | FRG     |  |

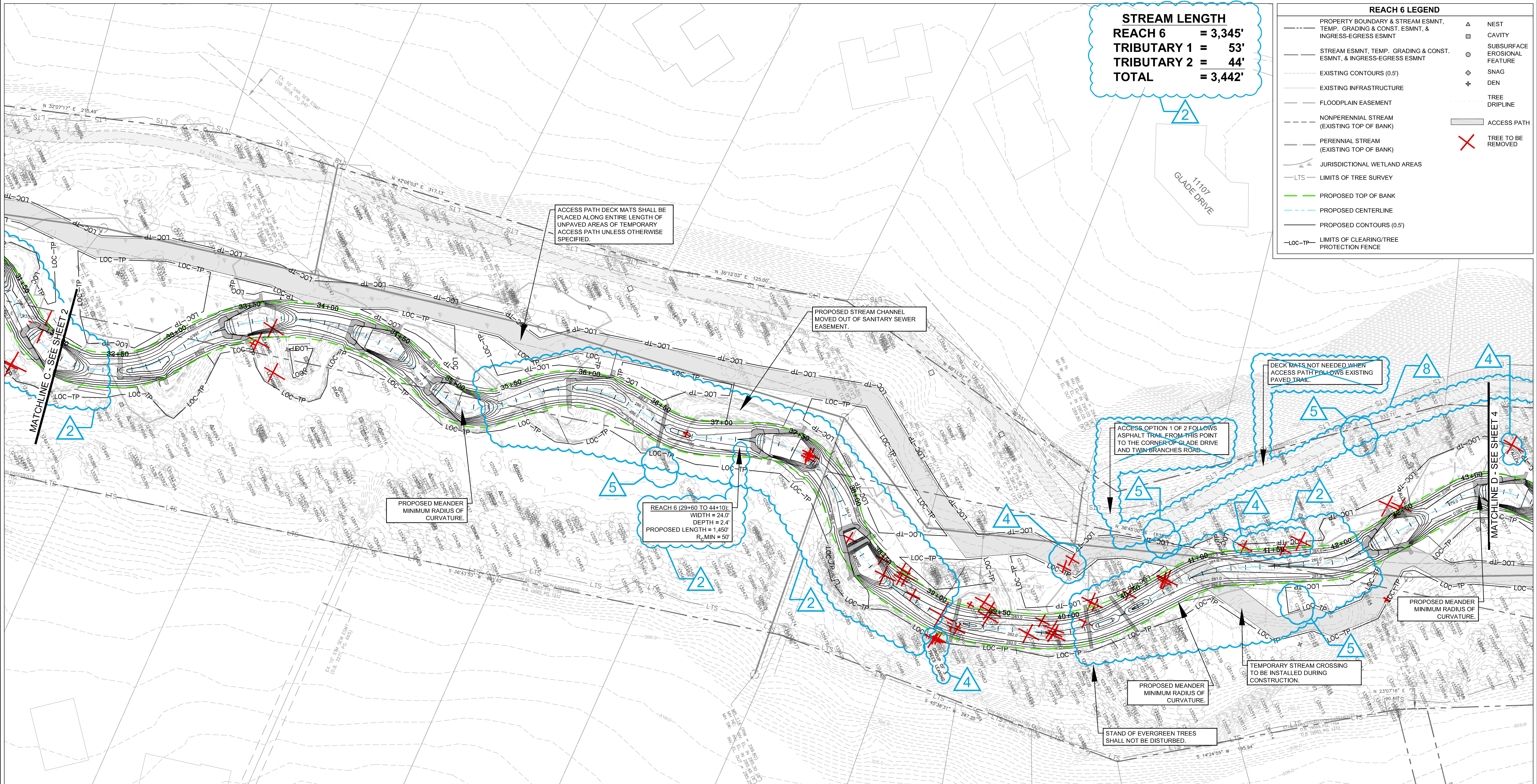
|   |       |          |
|---|-------|----------|
| H. D.: VCS NAD 83 V. D.: NGVD 29                        |       |          |
| Boundary and Topo Source: WSSI and Fairfax Digital Data |       |          |
| Design  | Draft | Approved |
| SRP   | SRP   | FRG      |
| Sheet #   |       |          |
| 2 of 4  |       |          |
| Computer File Name: I:\30000\30100\30100-0001-0001.dwg  |       |          |

DATE: JUNE 27, 2009      SCALE: 1" = 30'      C.I. = 0.5'

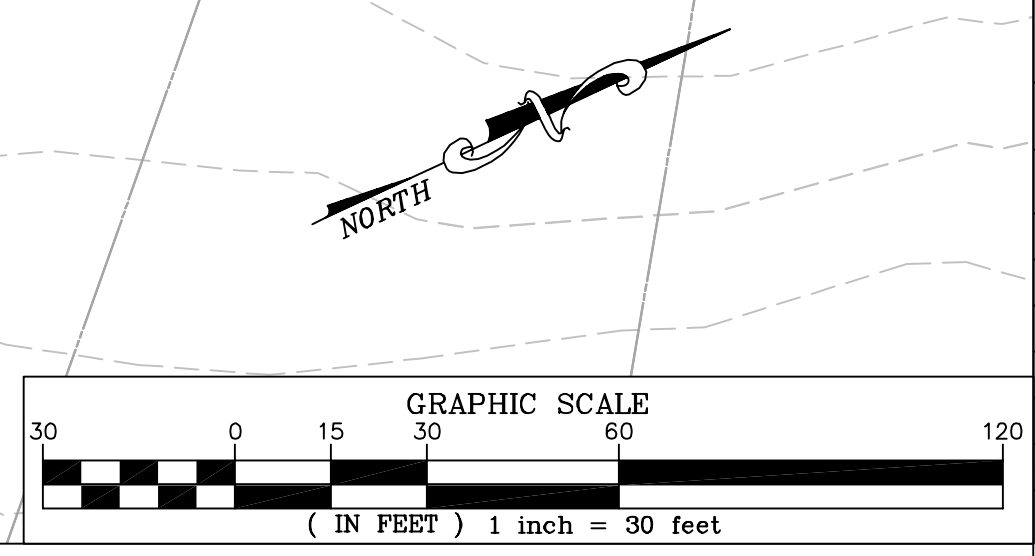
**STREAM LENGTH**  
**REACH 6 = 3,345'**  
**TRIBUTARY 1 = 53'**  
**TRIBUTARY 2 = 44'**  
**TOTAL = 3,442'**

**REACH 6 LEGEND**

|     |  |   |                              |
|-----|--|---|------------------------------|
| --- | PROPERTY BOUNDARY & STREAM ESMNT, TEMP. GRADING & CONST. ESMNT, & INGRESS-EGRESS ESMNT | ▲ | NEST                         |
| --- | STREAM ESMNT, TEMP. GRADING & CONST. ESMNT, & INGRESS-EGRESS ESMNT                     | □ | CAVITY                       |
| --- | EXISTING CONTOURS (0.5')   | ○ | SUBSURFACE EROSIONAL FEATURE |
| --- | EXISTING INFRASTRUCTURE  | ◇ | SNAG                         |
| --- | FLOODPLAIN EASEMENT  | + | DEN                          |
| --- | NONPERENNIAL STREAM (EXISTING TOP OF BANK)   | ○ | TREE DRIPLINE                |
| --- | PERENNIAL STREAM (EXISTING TOP OF BANK)  | ○ | ACCESS PATH                  |
| --- | JURISDICTIONAL WETLAND AREAS   | ✗ | TREE TO BE REMOVED           |
| --- | LTS - LIMITS OF TREE SURVEY  |   |                              |
| --- | PROPOSED TOP OF BANK   |   |                              |
| --- | PROPOSED CENTERLINE  |   |                              |
| --- | PROPOSED CONTOURS (0.5')   |   |                              |
| --- | LOC-TP - LIMITS OF CLEARING/TREE PROTECTION FENCE                                      |   |                              |



1  
 REVISED LIMITS OF CLEARING AND TEMPORARY ACCESS PATH



NORTHERN VIRGINIA STREAM RESTORATION BANK  
 THE GLADE - REACH 6  
 Fairfax County, Virginia  
 Preliminary Plan  
 Copyright © 2009 Wetland Studies and Solutions, Inc.

**Wetland**  
 Studies and Solutions, Inc.®

5300 Wellington Branch Drive, Suite 100 • Gainesville, VA 20155  
 Phone 703 679 5600 • Fax 703 679 5601  
 wetlandstudies.com

| REVISIONS |           |  |         | REVISIONS |     |      |             |         |         |
|-----------|-----------|--|---------|-----------|-----|------|-------------|---------|---------|
| No.       | Date      | Description                                | Rev. By | App. By   | No. | Date | Description | Rev. By | App. By |
| 1         | 7/24/2009 | Revised Limits of Clearing and Access Path | SRP     | FRG       |     |      |             |         |         |
| 2         | 7/24/2009 | Revised alignment; stream lengths          | SRP     | FRG       |     |      |             |         |         |
| 4         | 7/24/2009 | Added trees to be removed (10 Total)       | SRP     | FRG       |     |      |             |         |         |
| 5         | 7/24/2009 | Added trees to be saved (19 Total)         | SRP     | FRG       |     |      |             |         |         |
| 8         | 7/24/2009 | Removed access option 1 & assoc. notes     | SRP     | FRG       |     |      |             |         |         |

DATE: JUNE 27, 2009    SCALE: 1" = 30'    C.I. = 0.5'

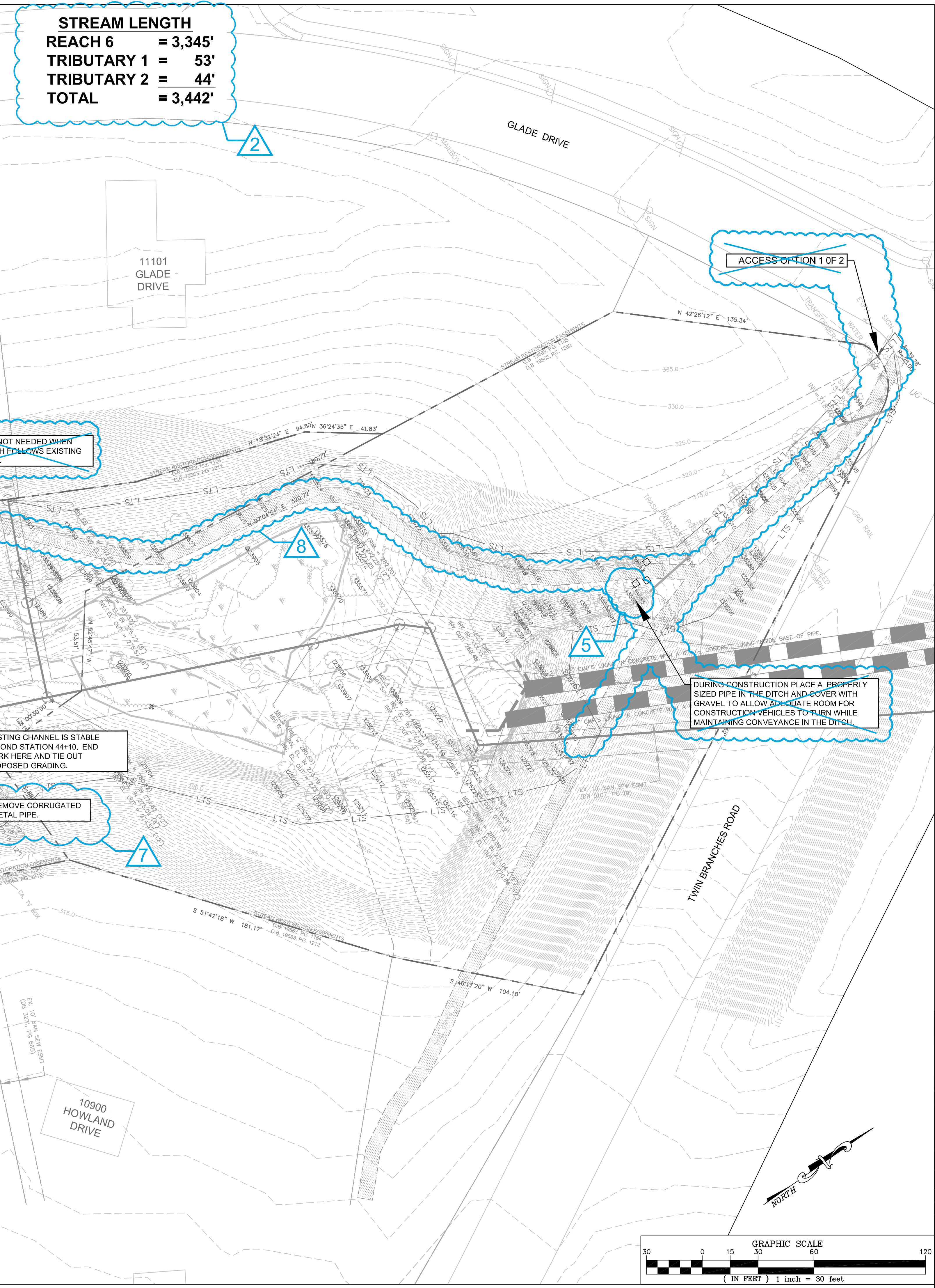
H. D.: VCS NAD 83 V. D.: NGVD 29  
 Boundary and Topo Source:  
 WSSI and Fairfax Digital Data

|        |       |          |
|--------|-------|----------|
| Design | Draft | Approved |
| SRP    | SRP   | FRG      |

Sheet #  
**3 of 4**

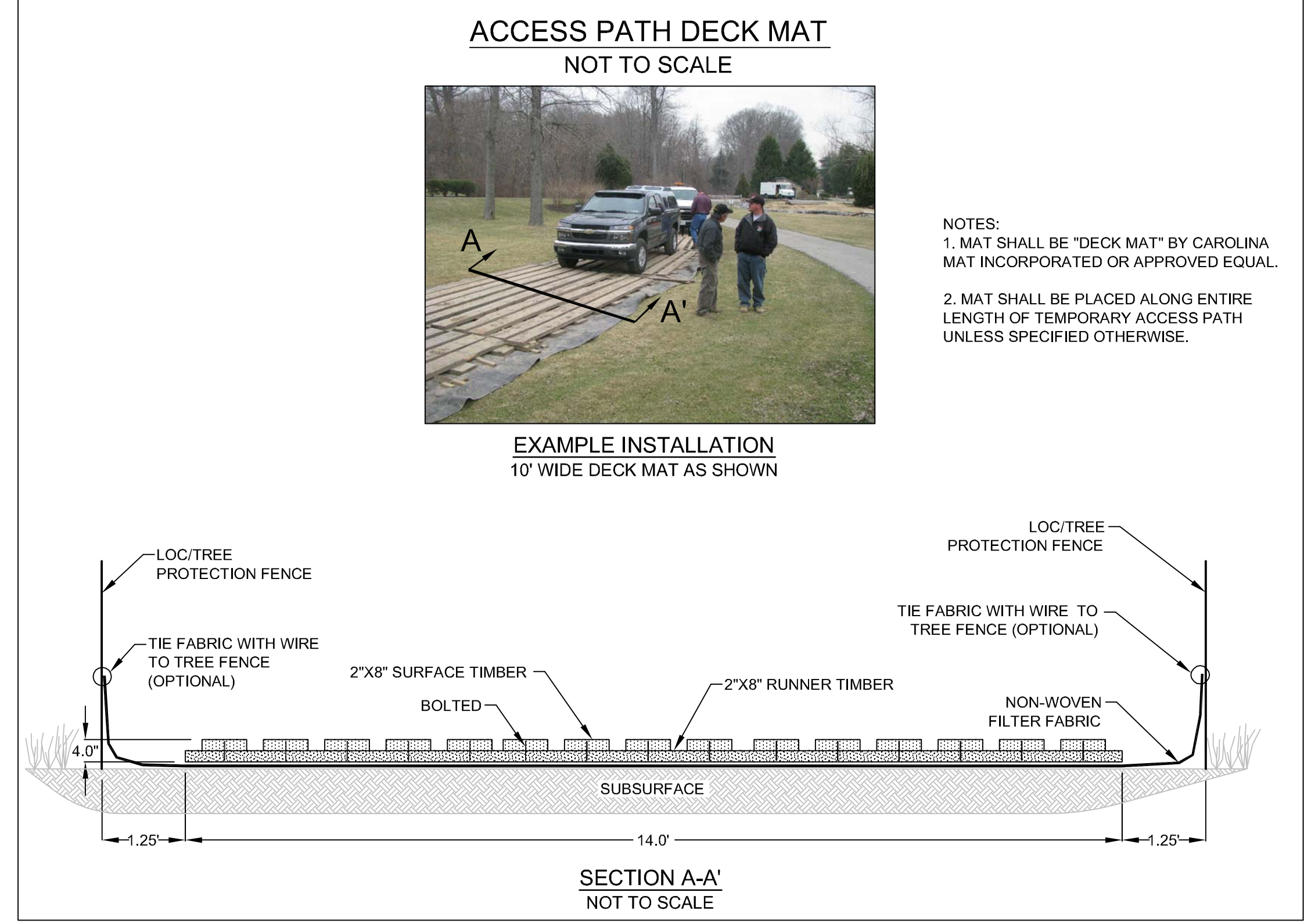
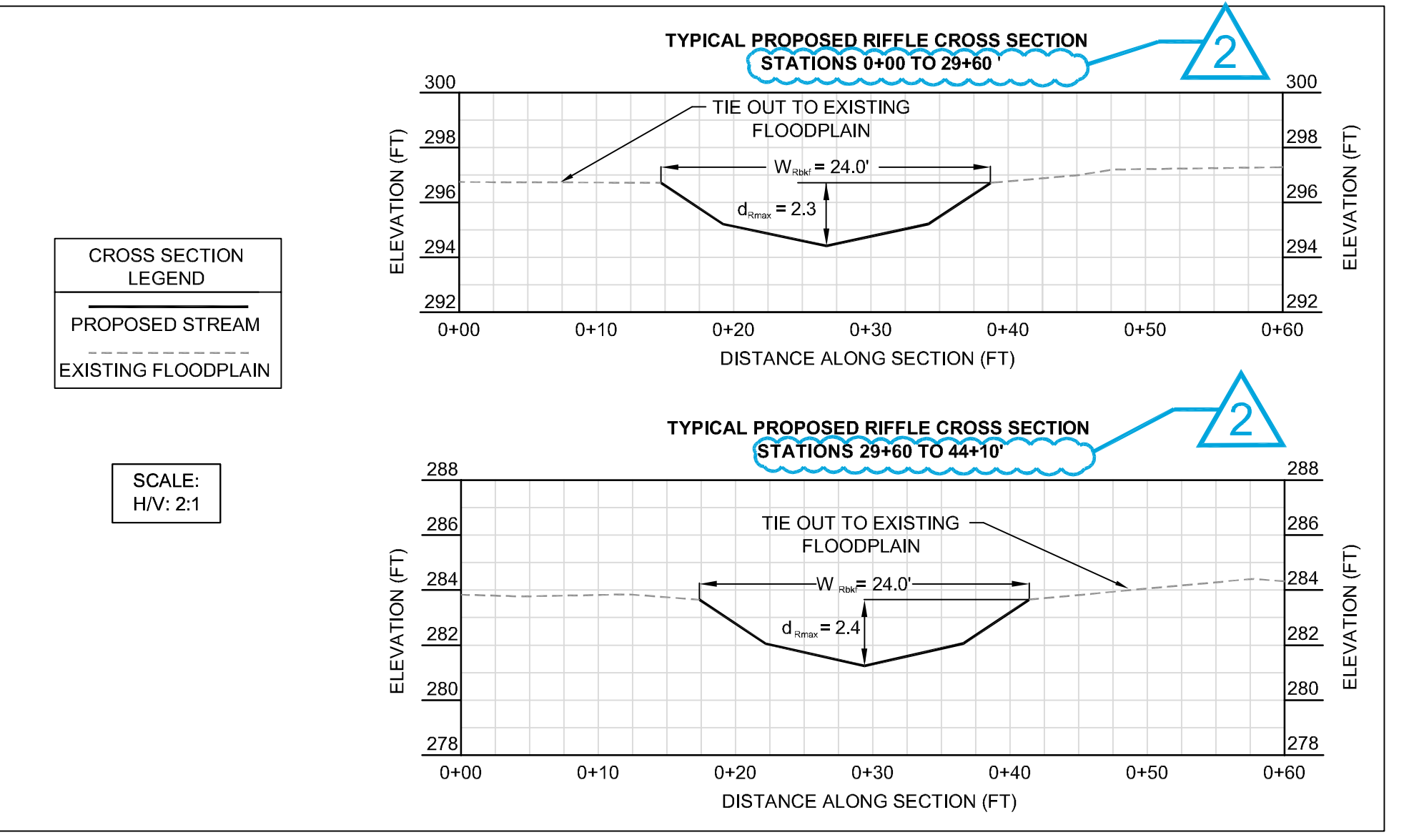
Computer File Name:  
 I:\2009\2009-06-01-04\...

| REACH 6 LEGEND   |                                |
|--|--------------------------------|
| --- PROPERTY BOUNDARY & STREAM ESMNT, TEMP. GRADING & CONST. ESMNT, & INGRESS-EGRESS ESMNT | ▲ NEST                         |
| --- STREAM ESMNT, TEMP. GRADING & CONST. ESMNT, & INGRESS-EGRESS ESMNT                     | □ CAVITY                       |
| --- EXISTING CONTOURS (0.5')   | ○ SUBSURFACE EROSIONAL FEATURE |
| --- EXISTING INFRASTRUCTURE  | ◇ SNAG                         |
| --- FLOODPLAIN EASEMENT  | + DEN                          |
| --- NONPERENNIAL STREAM (EXISTING TOP OF BANK)   | --- TREE DRIPLINE              |
| --- PERENNIAL STREAM (EXISTING TOP OF BANK)  | --- ACCESS PATH                |
| --- JURISDICTIONAL WETLAND AREAS   | ✗ TREE TO BE REMOVED           |
| --- LTS --- LIMITS OF TREE SURVEY  |                                |
| --- PROPOSED TOP OF BANK   |                                |
| --- PROPOSED CENTERLINE  |                                |
| --- PROPOSED CONTOURS (0.5')   |                                |
| --- LOC-TP --- LIMITS OF CLEARING/TREE PROTECTION FENCE                                    |                                |



| REACH 6 - PROPOSED BRIDGE DIMENSIONS |          |                |                     |             |            |                    |                    |
|--------------------------------------|----------|----------------|---------------------|-------------|------------|--------------------|--------------------|
| REACH NAME                           | WSSI ID# | RESTON PLAC. # | BANKFULL WIDTH (FT) | EXISTING    |            | PROPOSED           |                    |
|                                      |          |                |                     | LENGTH (FT) | WIDTH (FT) | LENGTH (FT)        | WIDTH (FT)         |
| REACH 6                              | 25       | 46             | 24                  | 21          | 10         | 40                 | 10                 |
|                                      | 26       | 89             | N/A                 | 6           | 9          | NOT TO BE REPLACED | NOT TO BE REPLACED |
|                                      | 27       | 88             | N/A                 | 6           | 9          | NOT TO BE REPLACED | NOT TO BE REPLACED |

NOTES:  
 1. BOTTOM OF BRIDGE DECK TO BE 2 FT HIGHER THAN BANKFULL DEPTH



**NORTHERN VIRGINIA STREAM RESTORATION BANK**  
**THE GLADE - REACH 6**  
 Fairfax County, Virginia

**Preliminary Plan**

Copyright © 2009 Wetland Studies and Solutions, Inc.

**Wetland Studies and Solutions, Inc.**  
 5300 Wellington Branch Drive, Suite 100 • Gainesville, VA 20155  
 Phone 703 679 5600 • Fax 703 679 5601  
 wetlandstudies.com

H. D.: VCS NAD 83 V. D.: NGVD 29  
 Boundary and Topo Source: WSSI and Fairfax Digital Data

| REVISIONS |           |  |         |         |     |      |             |         |         |
|-----------|-----------|--|---------|---------|-----|------|-------------|---------|---------|
| No.       | Date      | Description                                | Rev. By | App. By | No. | Date | Description | Rev. By | App. By |
| 1         | 7/24/2009 | Revised Limits of Clearing and Access Path | SRP     | FRG     |     |      |             |         |         |
| 2         | 7/24/2009 | Revised alignment; stream lengths          | SRP     | FRG     |     |      |             |         |         |
| 4         | 7/24/2009 | Added trees to be removed (10 Total)       | SRP     | FRG     |     |      |             |         |         |
| 5         | 7/24/2009 | Added trees to be saved (19 Total)         | SRP     | FRG     |     |      |             |         |         |
| 7         | 7/24/2009 | Added grading note                         | SRP     | FRG     |     |      |             |         |         |
| 8         | 7/24/2009 | Removed access option 1 & assoc. notes     | SRP     | FRG     |     |      |             |         |         |

DATE: JUNE 27, 2009    SCALE: 1" = 30'    C.I. = 0.5'

Design    Draft    Approved  
 SRP    SRP    FRG

Sheet #  
**4 of 4**

Computer File Name:  
 L:\2009\2009-06-27-09-01-01.dwg