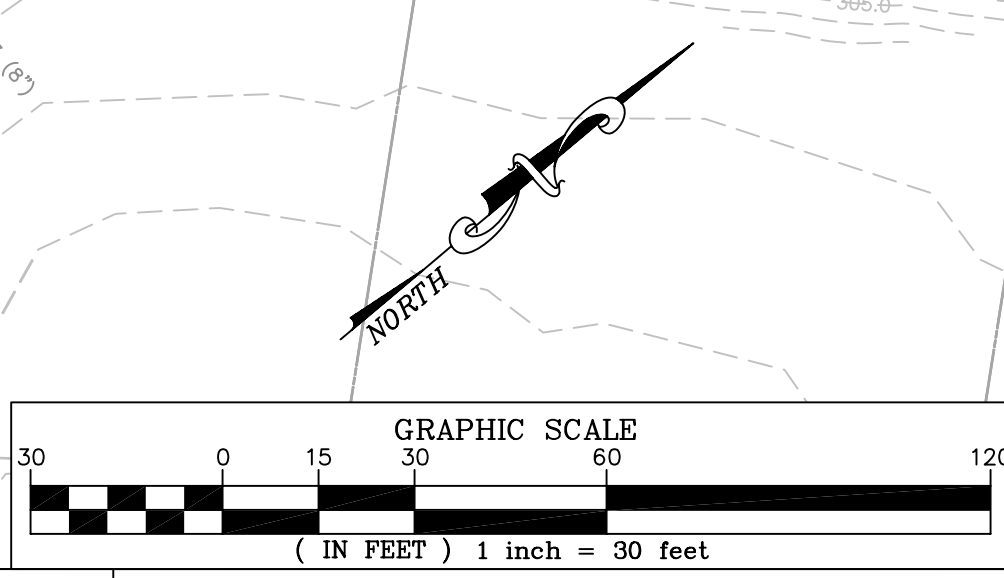
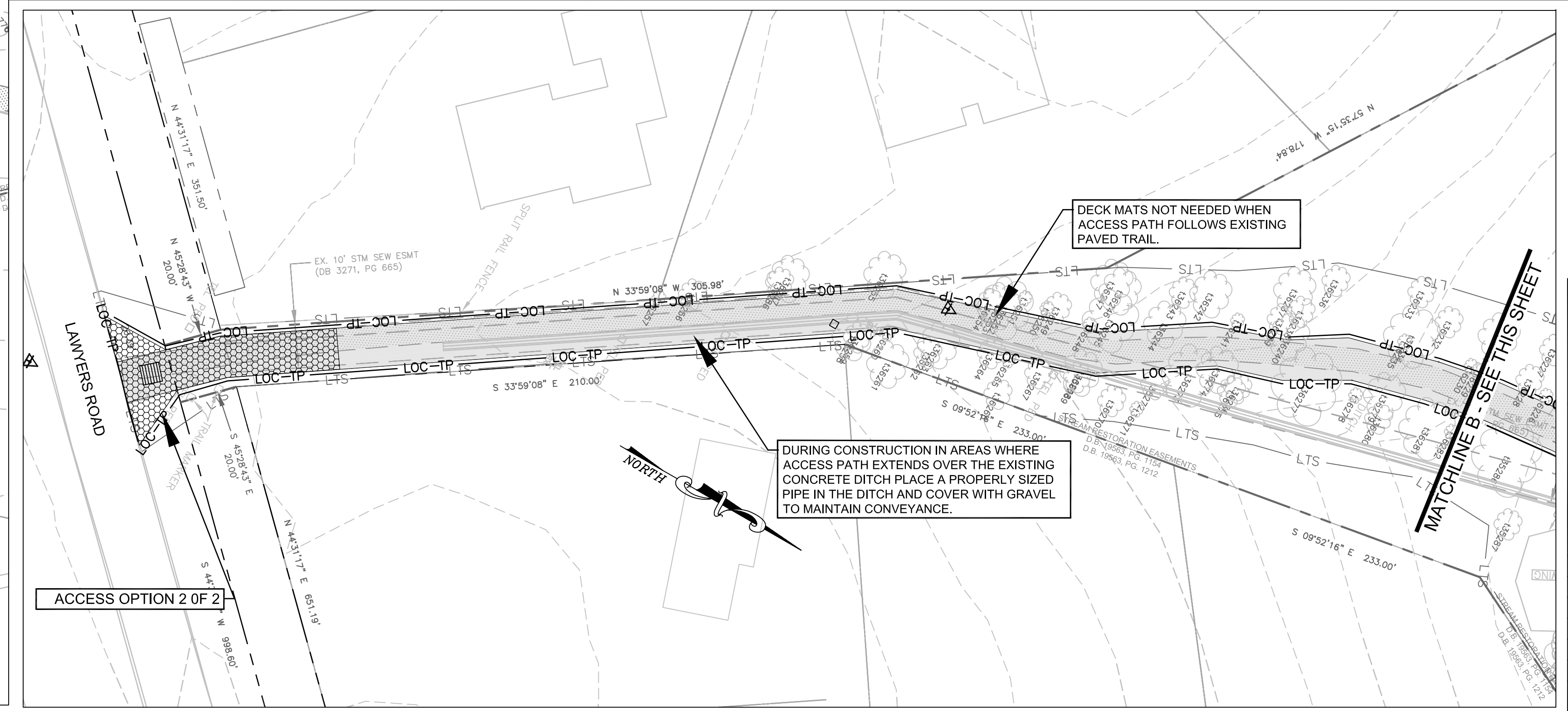
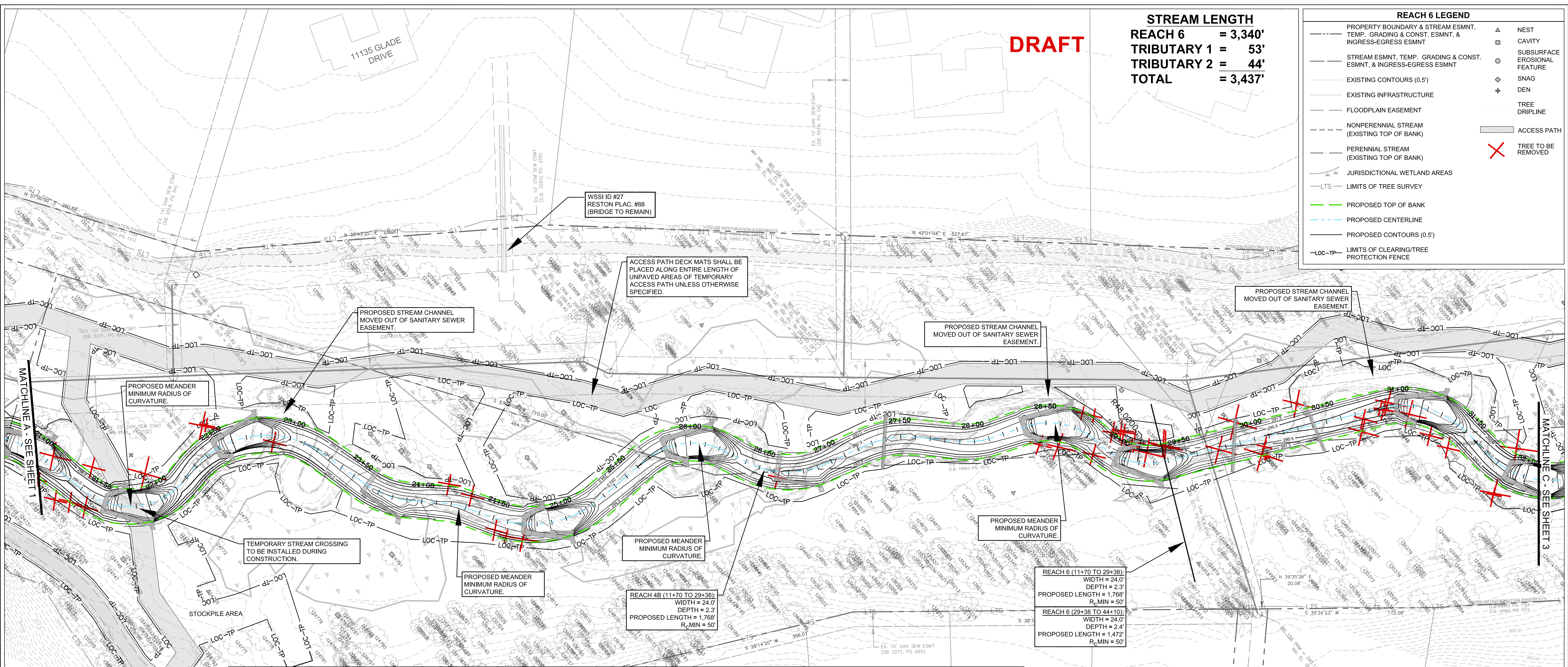


**DRAFT**

**STREAM LENGTH**  
**REACH 6 = 3,340'**  
**TRIBUTARY 1 = 53'**  
**TRIBUTARY 2 = 44'**  
**TOTAL = 3,437'**

**REACH 6 LEGEND**

---	PROPERTY BOUNDARY & STREAM ESMNT, TEMP. GRADING & CONST. ESMNT, & INGRESS-EGRESS ESMNT	△	NEST
---	STREAM ESMNT, TEMP. GRADING & CONST. ESMNT, & INGRESS-EGRESS ESMNT	□	CAVITY
---	EXISTING CONTOURS (0.5')	○	SUBSURFACE EROSIONAL FEATURE
---	EXISTING INFRASTRUCTURE	◇	SNAG
---	FLOODPLAIN EASEMENT	+	DEN
---	NONPERENNIAL STREAM (EXISTING TOP OF BANK)	○	TREE DRIPLINE
---	PERENNIAL STREAM (EXISTING TOP OF BANK)	○	ACCESS PATH
---	JURISDICTIONAL WETLAND AREAS	✗	TREE TO BE REMOVED
---	LTS - LIMITS OF TREE SURVEY		
---	PROPOSED TOP OF BANK		
---	PROPOSED CENTERLINE		
---	PROPOSED CONTOURS (0.5')		
---	LOC-TP - LIMITS OF CLEARING/TREE PROTECTION FENCE		



**NORTHERN VIRGINIA STREAM RESTORATION BANK**  
**THE GLADE - REACH 6**

Fairfax County, Virginia

**Preliminary Plan**

Copyright © 2009 Wetland Studies and Solutions, Inc.



5300 Wellington Branch Drive, Suite 100 • Gainesville, VA 20155  
 Phone 703 679 5600 • Fax 703 679 5601  
 wetlandstudies.com

REVISIONS									
No.	Date	Description	Rev. By	App. By	No.	Date	Description	Rev. By	App. By

H. D.: VCS NAD 83 V. D.: NGVD 29  
 Boundary and Topo Source: WSSI and Fairfax Digital Data

Design	Draft	Approved
SRP	SRP	FRG
Sheet #		
2 of 4		

Computer File Name: I:\50000\50000\C00104-1\04.dwg

DATE: JUNE 27, 2009 SCALE: 1" = 30' C.I. = 0.5'