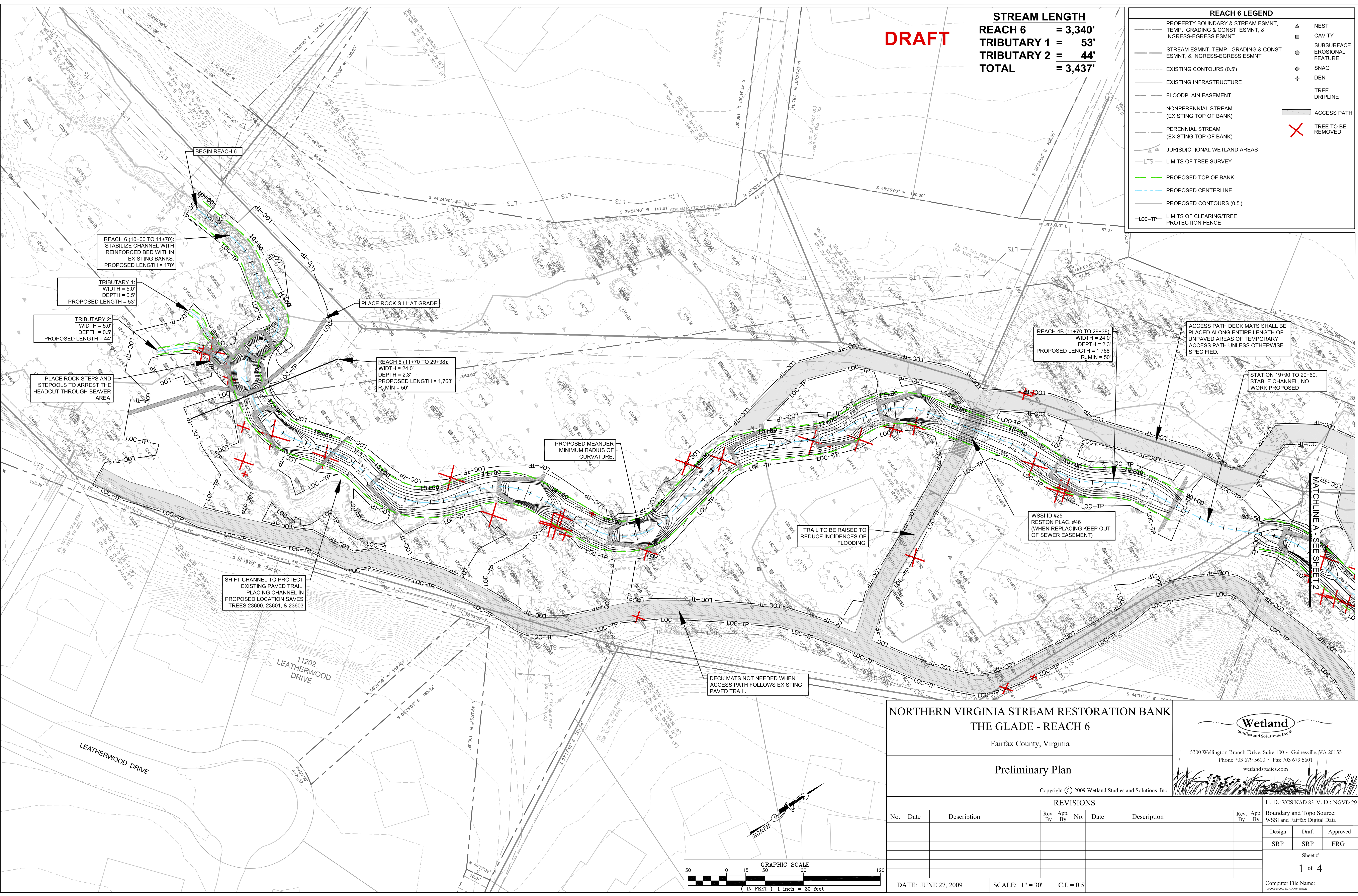


DRAFT

STREAM LENGTH
REACH 6 = 3,340'
TRIBUTARY 1 = 53'
TRIBUTARY 2 = 44'
TOTAL = 3,437'

REACH 6 LEGEND

---	PROPERTY BOUNDARY & STREAM ESMNT, TEMP. GRADING & CONST. ESMNT, & INGRESS-EGRESS ESMNT	▲	NEST
---	STREAM ESMNT, TEMP. GRADING & CONST. ESMNT, & INGRESS-EGRESS ESMNT	□	CAVITY
---	EXISTING CONTOURS (0.5')	○	SUBSURFACE EROSIONAL FEATURE
---	EXISTING INFRASTRUCTURE	◇	SNAG
---	FLOODPLAIN EASEMENT	+	DEN
---	NONPERENNIAL STREAM (EXISTING TOP OF BANK)	○	TREE DRIPLINE
---	PERENNIAL STREAM (EXISTING TOP OF BANK)	○	ACCESS PATH
---	JURISDICTIONAL WETLAND AREAS	✗	TREE TO BE REMOVED
---	LTS - LIMITS OF TREE SURVEY		
---	PROPOSED TOP OF BANK		
---	PROPOSED CENTERLINE		
---	PROPOSED CONTOURS (0.5')		
---	LOC-TP - LIMITS OF CLEARING/TREE PROTECTION FENCE		



NORTHERN VIRGINIA STREAM RESTORATION BANK
THE GLADE - REACH 6

Fairfax County, Virginia

Preliminary Plan

Copyright © 2009 Wetland Studies and Solutions, Inc.

Wetland
 Studies and Solutions, Inc. ©

5300 Wellington Branch Drive, Suite 100 • Gainesville, VA 20155
 Phone 703 679 5600 • Fax 703 679 5601
 wetlandstudies.com

REVISIONS									
No.	Date	Description	Rev. By	App. By	No.	Date	Description	Rev. By	App. By

H. D.: VCS NAD 83 V. D.: NGVD 29
 Boundary and Topo Source: WSSI and Fairfax Digital Data
 Design: SRP Draft: SRP Approved: FRG
 Sheet # 1 of 4
 Computer File Name: L:\50000\2009\06\00104\0604.dwg

DATE: JUNE 27, 2009 SCALE: 1" = 30' C.I. = 0.5'

