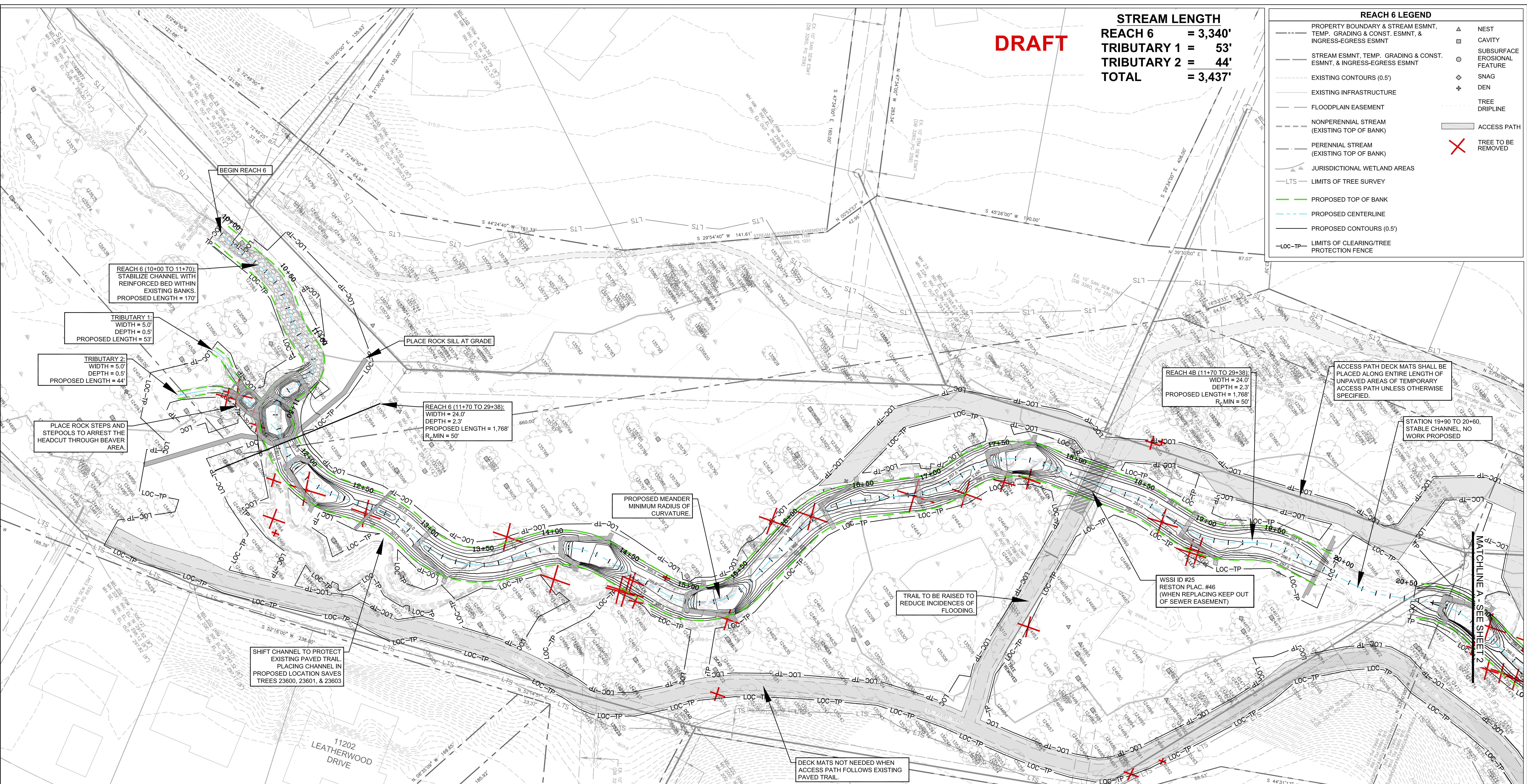


DRAFT

STREAM LENGTH
REACH 6 = 3,340'
TRIBUTARY 1 = 53'
TRIBUTARY 2 = 44'
TOTAL = 3,437'

REACH 6 LEGEND

---	PROPERTY BOUNDARY & STREAM ESMNT, TEMP. GRADING & CONST. ESMNT, & INGRESS-EGRESS ESMNT	▲	NEST
---	STREAM ESMNT, TEMP. GRADING & CONST. ESMNT, & INGRESS-EGRESS ESMNT	□	CAVITY
---	EXISTING CONTOURS (0.5')	○	SUBSURFACE EROSIONAL FEATURE
---	EXISTING INFRASTRUCTURE	◇	SNAG
---	FLOODPLAIN EASEMENT	+	DEN
---	NONPERENNIAL STREAM (EXISTING TOP OF BANK)	○	TREE DRIPLINE
---	PERENNIAL STREAM (EXISTING TOP OF BANK)	○	ACCESS PATH
---	JURISDICTIONAL WETLAND AREAS	✗	TREE TO BE REMOVED
---	LTS - LIMITS OF TREE SURVEY		
---	PROPOSED TOP OF BANK		
---	PROPOSED CENTERLINE		
---	PROPOSED CONTOURS (0.5')		
---	LOC-TP - LIMITS OF CLEARING/TREE PROTECTION FENCE		



NORTHERN VIRGINIA STREAM RESTORATION BANK
THE GLADE - REACH 6
 Fairfax County, Virginia

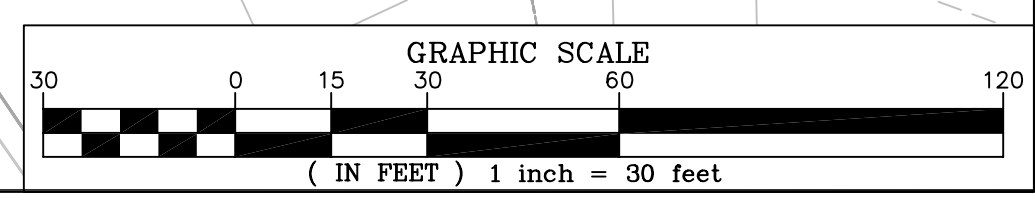
Wetland
 Studies and Solutions, Inc. ©

5300 Wellington Branch Drive, Suite 100 • Gainesville, VA 20155
 Phone 703 679 5600 • Fax 703 679 5601
 wetlandstudies.com

Preliminary Plan

Copyright © 2009 Wetland Studies and Solutions, Inc.

REVISIONS									
No.	Date	Description	Rev. By	App. By	No.	Date	Description	Rev. By	App. By



DATE: JUNE 27, 2009

SCALE: 1" = 30'

C.I. = 0.5'

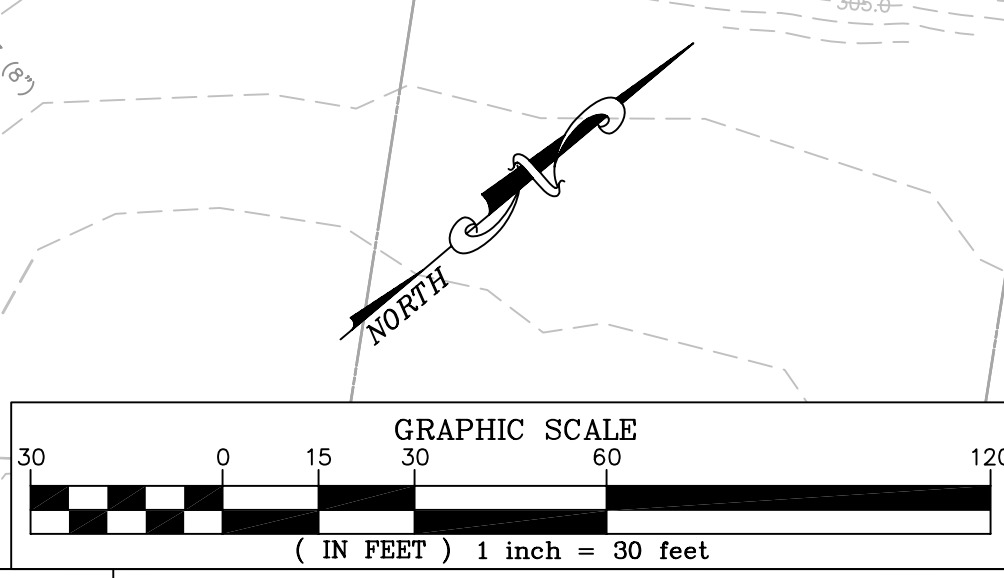
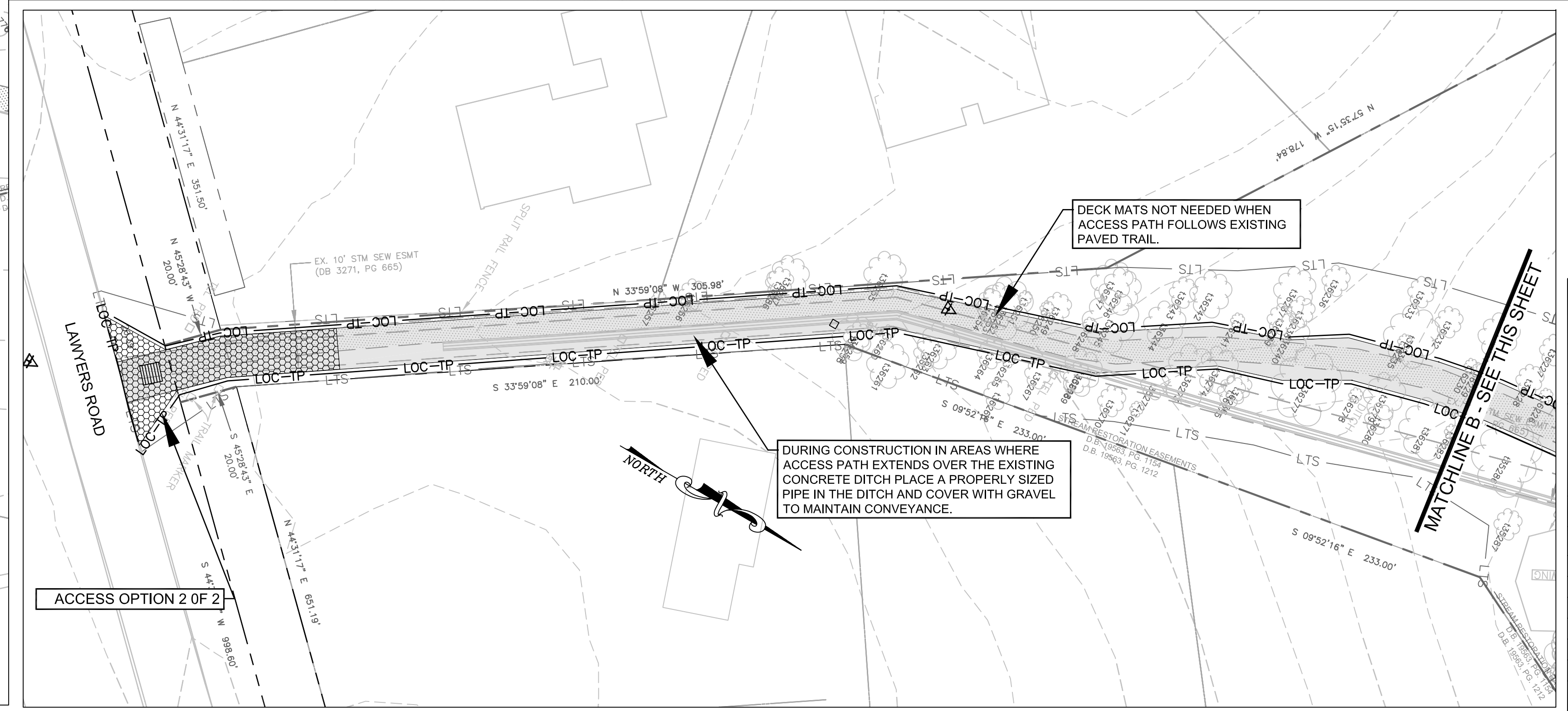
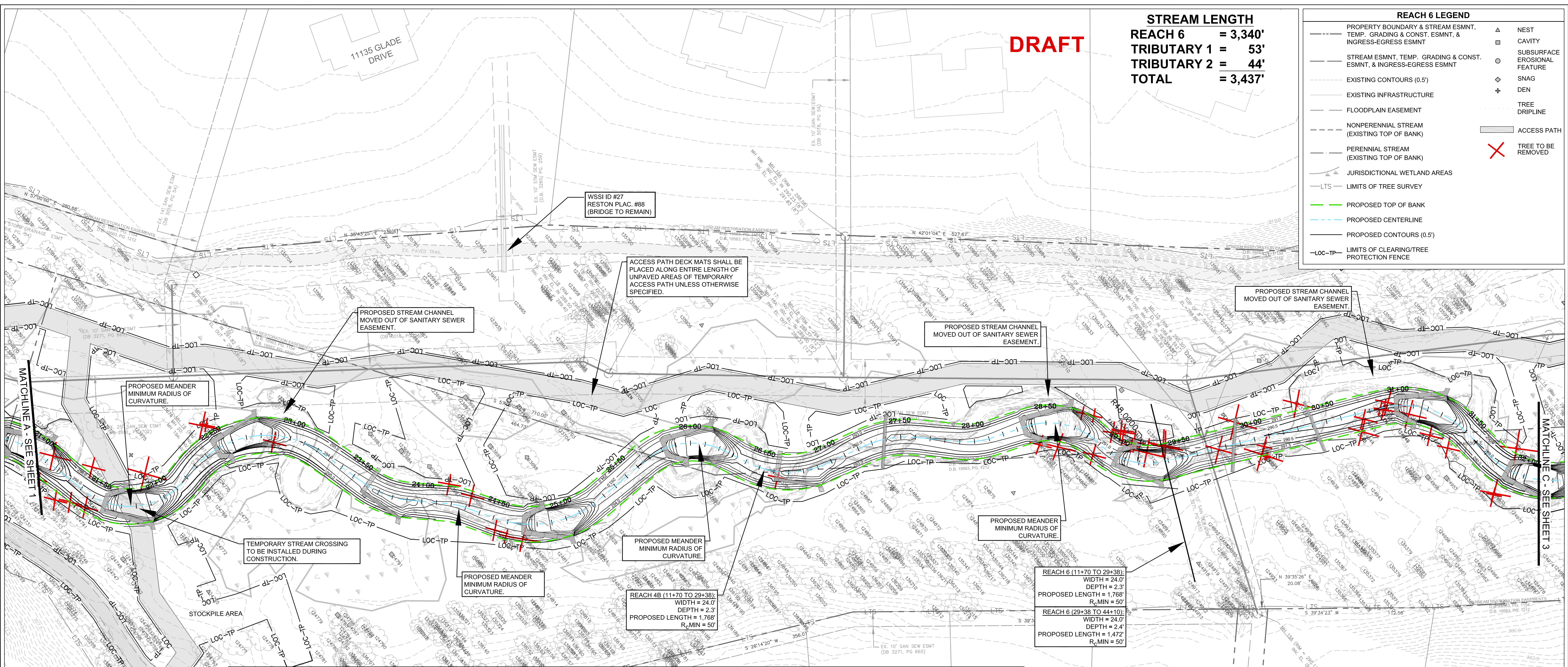
H. D.: VCS NAD 83 V. D.: NGVD 29
 Boundary and Topo Source:
 WSSI and Fairfax Digital Data
 Design SRP Draft SRP Approved FRG
 Sheet #
1 of 4
 Computer File Name:
 L:\2009\2009-C-00104-004.dwg

DRAFT

STREAM LENGTH
REACH 6 = 3,340'
TRIBUTARY 1 = 53'
TRIBUTARY 2 = 44'
TOTAL = 3,437'

REACH 6 LEGEND

---	PROPERTY BOUNDARY & STREAM ESMNT, TEMP. GRADING & CONST. ESMNT, & INGRESS-EGRESS ESMNT	△	NEST
---	STREAM ESMNT, TEMP. GRADING & CONST. ESMNT, & INGRESS-EGRESS ESMNT	□	CAVITY
---	EXISTING CONTOURS (0.5')	○	SUBSURFACE EROSIONAL FEATURE
---	EXISTING INFRASTRUCTURE	◇	SNAG
---	FLOODPLAIN EASEMENT	+	DEN
---	NONPERENNIAL STREAM (EXISTING TOP OF BANK)	○	TREE DRIPLINE
---	PERENNIAL STREAM (EXISTING TOP OF BANK)	○	ACCESS PATH
---	JURISDICTIONAL WETLAND AREAS	✗	TREE TO BE REMOVED
---	LTS - LIMITS OF TREE SURVEY		
---	PROPOSED TOP OF BANK		
---	PROPOSED CENTERLINE		
---	PROPOSED CONTOURS (0.5')		
---	LOC-TP - LIMITS OF CLEARING/TREE PROTECTION FENCE		



NORTHERN VIRGINIA STREAM RESTORATION BANK
THE GLADE - REACH 6

Fairfax County, Virginia

Preliminary Plan

Copyright © 2009 Wetland Studies and Solutions, Inc.

Wetland
Studies and Solutions, Inc.

5300 Wellington Branch Drive, Suite 100 • Gainesville, VA 20155
Phone 703 679 5600 • Fax 703 679 5601
wetlandstudies.com

REVISIONS									
No.	Date	Description	Rev. By	App. By	No.	Date	Description	Rev. By	App. By

H. D.: VCS NAD 83 V. D.: NGVD 29

Boundary and Topo Source: WSSI and Fairfax Digital Data

Design	Draft	Approved
SRP	SRP	FRG

Sheet #
2 of 4

Computer File Name:
I:\50000\50000\CAD\0418-13.dwg

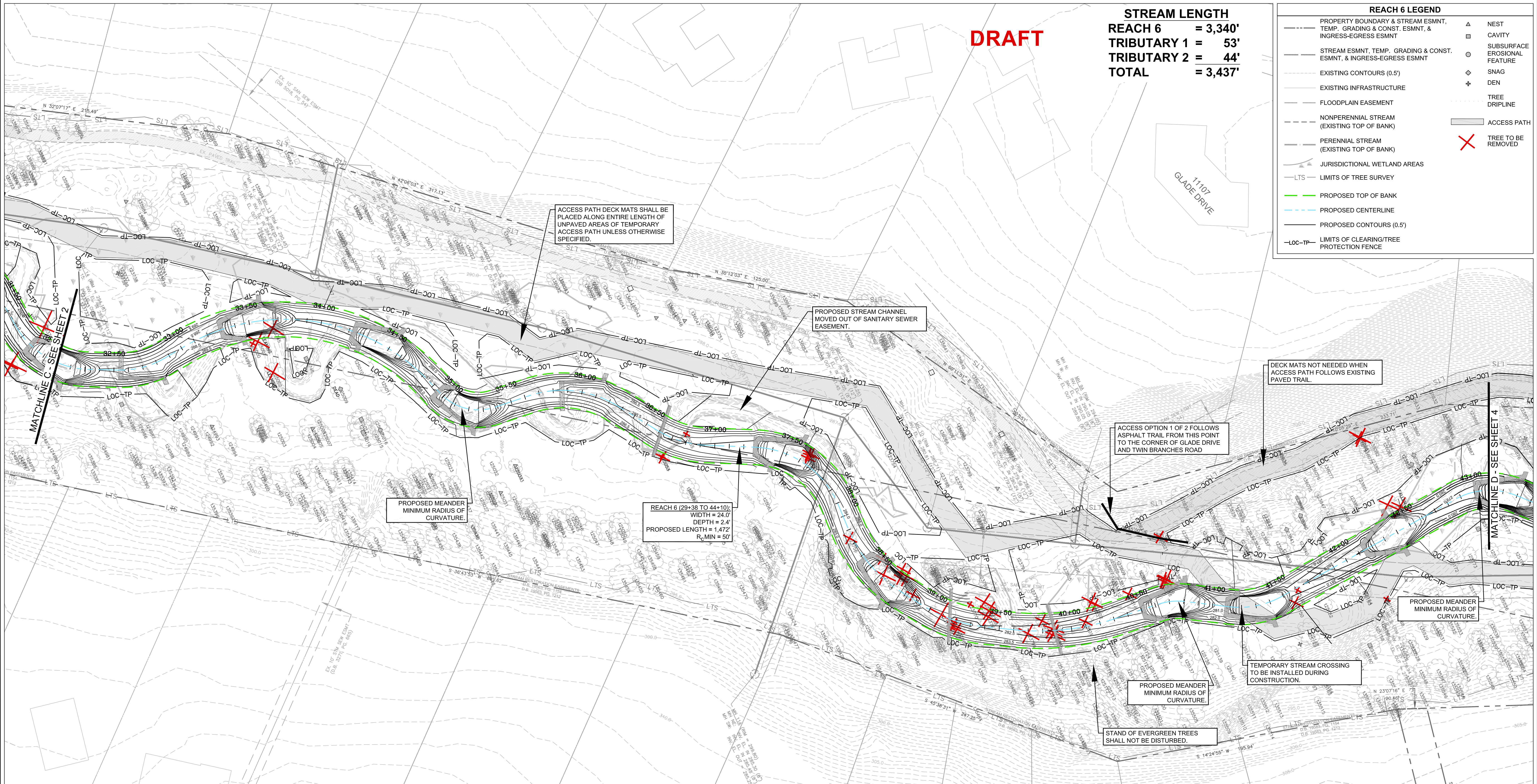
DATE: JUNE 27, 2009 SCALE: 1" = 30' C.I. = 0.5'

DRAFT

STREAM LENGTH
REACH 6 = 3,340'
TRIBUTARY 1 = 53'
TRIBUTARY 2 = 44'
TOTAL = 3,437'

REACH 6 LEGEND

--- PROPERTY BOUNDARY & STREAM ESMNT, TEMP. GRADING & CONST. ESMNT, & INGRESS-EGRESS ESMNT	▲ NEST
--- STREAM ESMNT, TEMP. GRADING & CONST. ESMNT, & INGRESS-EGRESS ESMNT	□ CAVITY
--- EXISTING CONTOURS (0.5')	○ SUBSURFACE EROSIONAL FEATURE
--- EXISTING INFRASTRUCTURE	◇ SNAG
--- FLOODPLAIN EASEMENT	+ DEN
--- NONPERENNIAL STREAM (EXISTING TOP OF BANK)	○ TREE DRIPLINE
--- PERENNIAL STREAM (EXISTING TOP OF BANK)	✗ TREE TO BE REMOVED
--- JURISDICTIONAL WETLAND AREAS	
--- LTS --- LIMITS OF TREE SURVEY	
--- PROPOSED TOP OF BANK	
--- PROPOSED CENTERLINE	
--- PROPOSED CONTOURS (0.5')	
--- LOC-TP --- LIMITS OF CLEARING/TREE PROTECTION FENCE	
	--- ACCESS PATH



NORTHERN VIRGINIA STREAM RESTORATION BANK
THE GLADE - REACH 6

Fairfax County, Virginia

Preliminary Plan

Copyright © 2009 Wetland Studies and Solutions, Inc.



5300 Wellington Branch Drive, Suite 100 • Gainesville, VA 20155
 Phone 703 679 5600 • Fax 703 679 5601
 wetlandstudies.com

REVISIONS									
No.	Date	Description	Rev. By	App. By	No.	Date	Description	Rev. By	App. By

H. D.: VCS NAD 83 V. D.: NGVD 29

Boundary and Topo Source: WSSI and Fairfax Digital Data

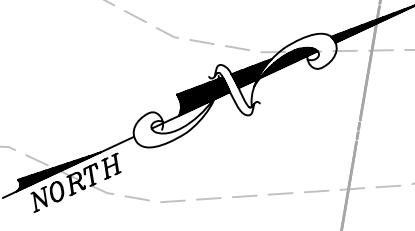
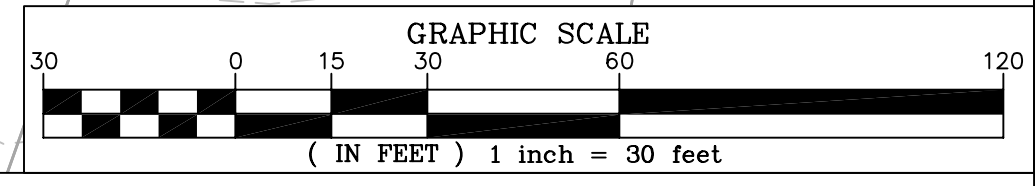
Design Draft Approved

SRP SRP FRG

Sheet #

3 of 4

Computer File Name: I:\00000000\CAD\0014\ENCL



10932 HOWLAND DRIVE
 HOWLAND DRIVE

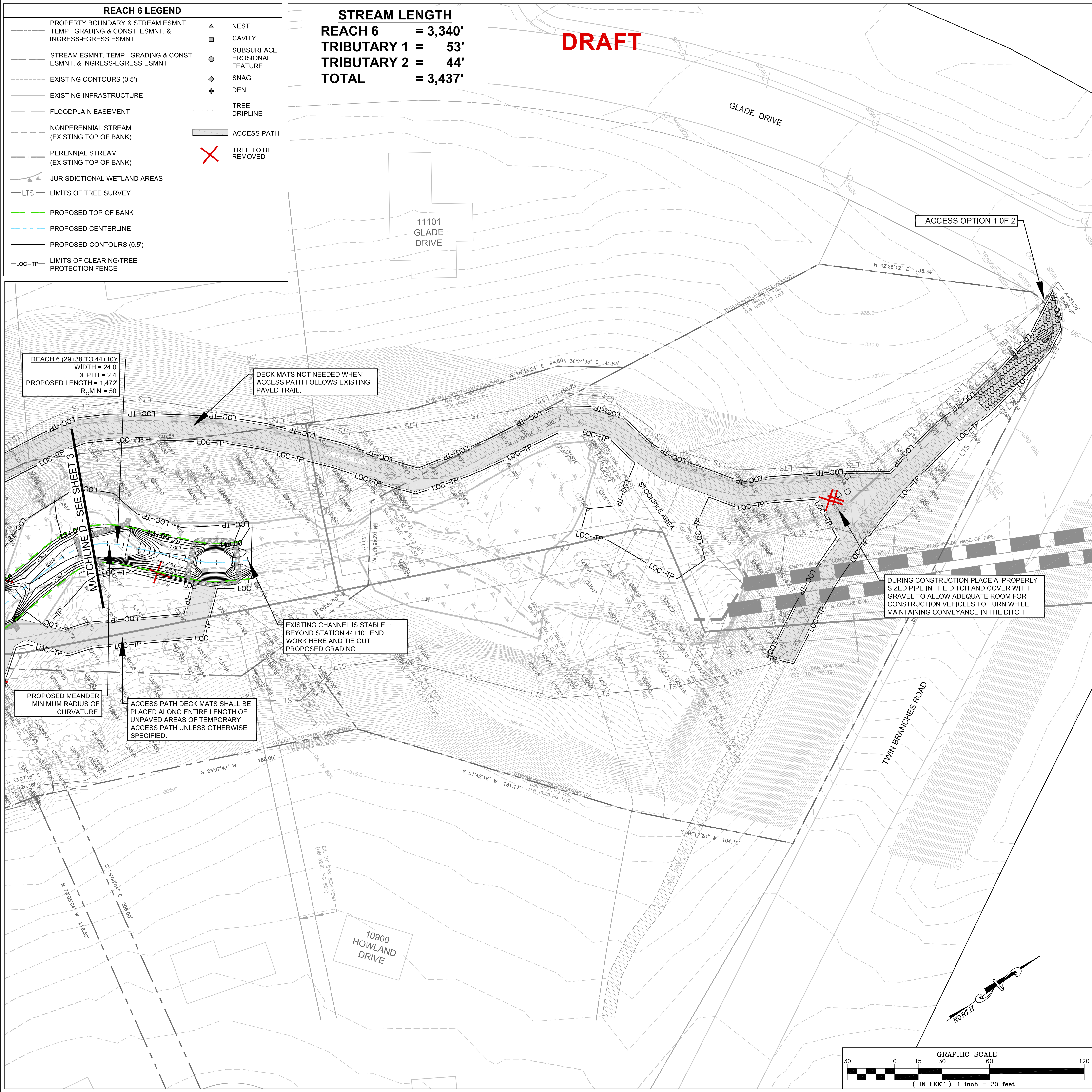
11107 GLADE DRIVE

REACH 6 LEGEND

--- PROPERTY BOUNDARY & STREAM ESMNT, TEMP. GRADING & CONST. ESMNT, & INGRESS-EGRESS ESMNT	▲ NEST
--- STREAM ESMNT, TEMP. GRADING & CONST. ESMNT, & INGRESS-EGRESS ESMNT	□ CAVITY
--- EXISTING CONTOURS (0.5')	○ SUBSURFACE EROSIONAL FEATURE
--- EXISTING INFRASTRUCTURE	◇ SNAG
--- FLOODPLAIN EASEMENT	+ DEN
--- NONPERENNIAL STREAM (EXISTING TOP OF BANK)	--- TREE DRIPLINE
--- PERENNIAL STREAM (EXISTING TOP OF BANK)	✗ TREE TO BE REMOVED
--- JURISDICTIONAL WETLAND AREAS	
--- LTS --- LIMITS OF TREE SURVEY	
--- PROPOSED TOP OF BANK	
--- PROPOSED CENTERLINE	
--- PROPOSED CONTOURS (0.5')	
--- LOC-TP --- LIMITS OF CLEARING/TREE PROTECTION FENCE	

STREAM LENGTH
REACH 6 = 3,340'
TRIBUTARY 1 = 53'
TRIBUTARY 2 = 44'
TOTAL = 3,437'

DRAFT



REACH 6 - PROPOSED BRIDGE DIMENSIONS

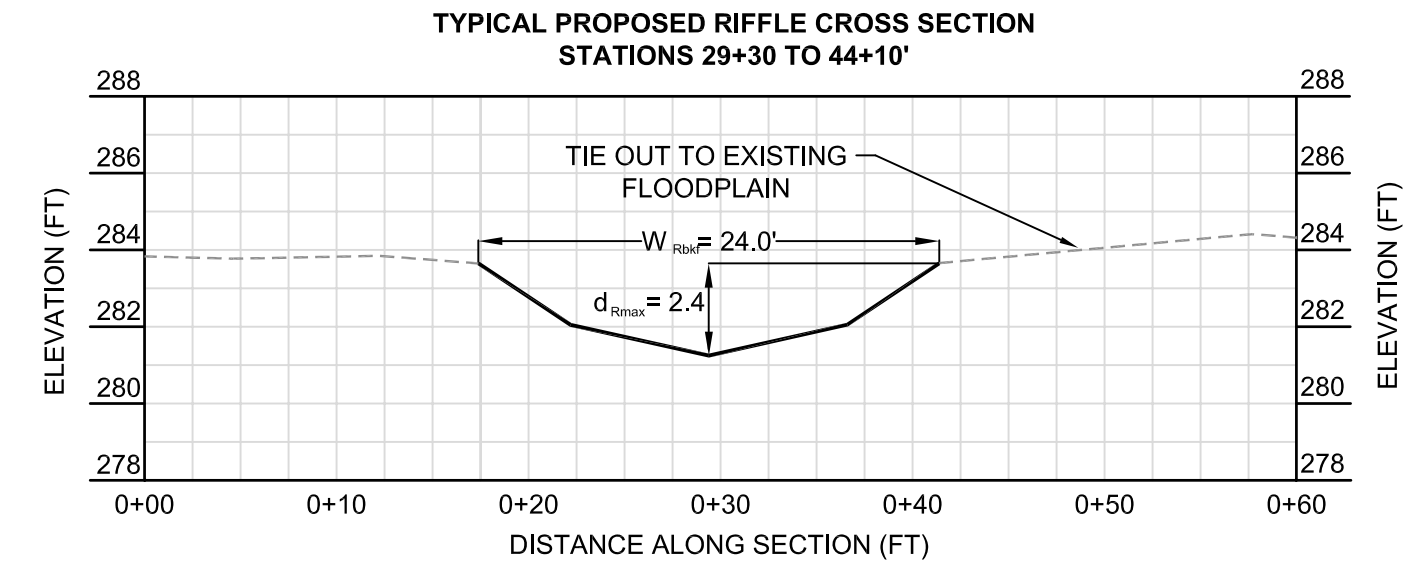
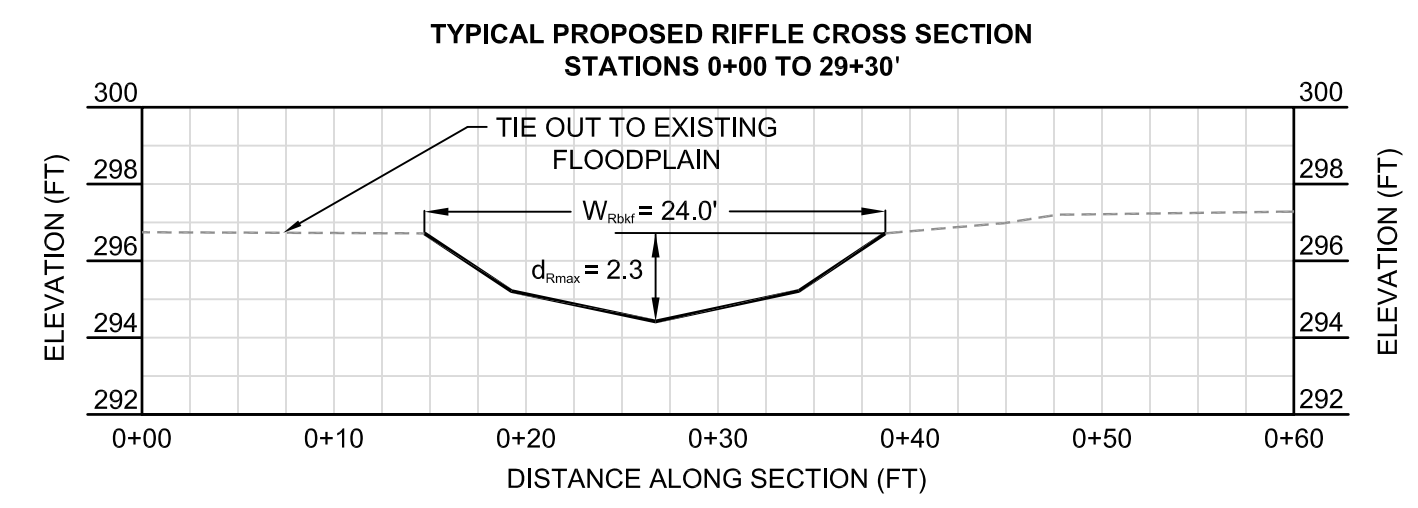
REACH NAME	WSSI ID#	RESTON PLAC. #	BANKFULL WIDTH (FT)	EXISTING		PROPOSED	
				LENGTH (FT)	WIDTH (FT)	LENGTH (FT)	WIDTH (FT)
REACH 6	25	46	24	21	10	40	10
	26	89	N/A	6	9	NOT TO BE REPLACED	NOT TO BE REPLACED
	27	88	N/A	6	9	NOT TO BE REPLACED	NOT TO BE REPLACED

NOTES:
 1. BOTTOM OF BRIDGE DECK TO BE 2 FT HIGHER THAN BANKFULL DEPTH

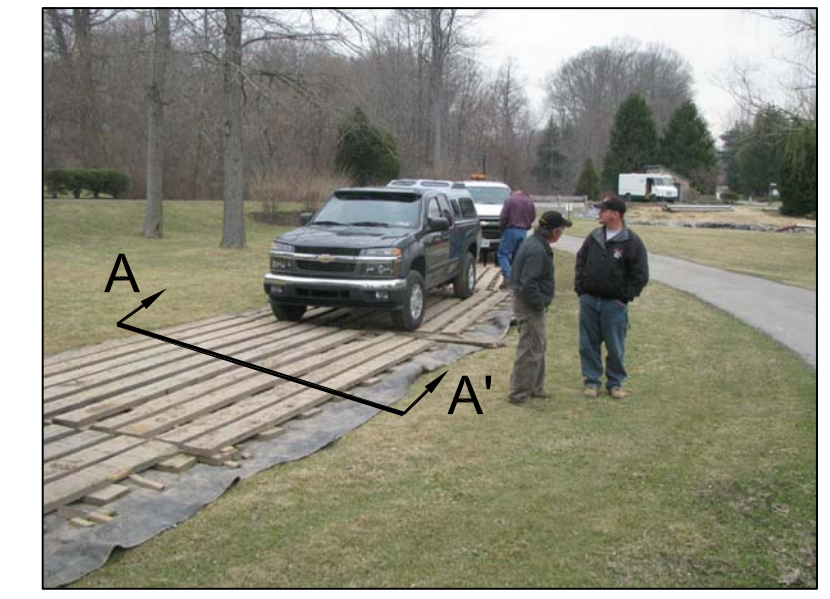
CROSS SECTION LEGEND

---	PROPOSED STREAM
---	EXISTING FLOODPLAIN

SCALE:
 H:V = 2:1

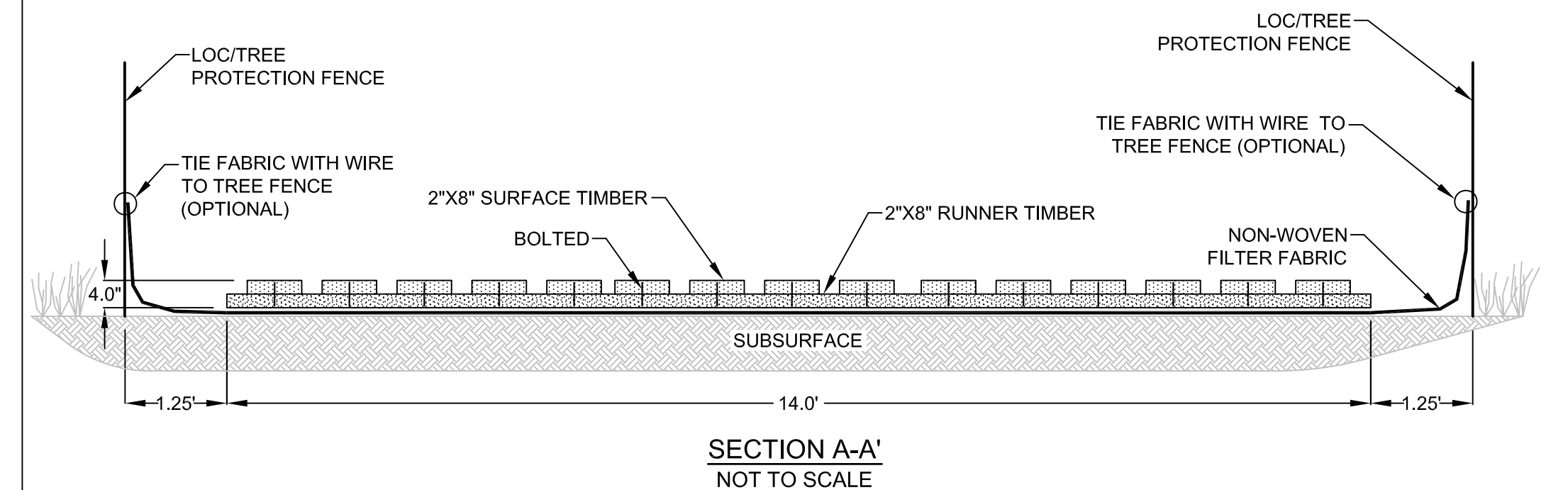


ACCESS PATH DECK MAT NOT TO SCALE



NOTES:
 1. MAT SHALL BE 'DECK MAT' BY CAROLINA MAT INCORPORATED OR APPROVED EQUAL.
 2. MAT SHALL BE PLACED ALONG ENTIRE LENGTH OF TEMPORARY ACCESS PATH UNLESS SPECIFIED OTHERWISE.

EXAMPLE INSTALLATION 10' WIDE DECK MAT AS SHOWN



NORTHERN VIRGINIA STREAM RESTORATION BANK THE GLADE - REACH 6

Fairfax County, Virginia

Preliminary Plan

Copyright © 2009 Wetland Studies and Solutions, Inc.



5300 Wellington Branch Drive, Suite 100 • Gainesville, VA 20155
 Phone 703 679 5600 • Fax 703 679 5601
 wetlandstudies.com

REVISIONS

No.	Date	Description	Rev. By	App. By	No.	Date	Description	Rev. By	App. By

H. D.: VCS NAD 83 V. D.: NGVD 29
 Boundary and Topo Source: WSSI and Fairfax Digital Data
 Design: SRP Draft: SRP Approved: FRG
 Sheet # **4 of 4**
 Computer File Name: U:\30000\2009\C-00104-01.dwg

DATE: JUNE 27, 2009 SCALE: 1" = 30' C.I. = 0.5'

