

REACH 6 LEGEND	
--- PROPERTY BOUNDARY & STREAM ESMNT, TEMP. GRADING & CONST. ESMNT, & INGRESS-EGRESS ESMNT	▲ NEST
--- STREAM ESMNT, TEMP. GRADING & CONST. ESMNT, & INGRESS-EGRESS ESMNT	□ CAVITY
- - - EXISTING CONTOURS (0.5')	○ SUBSURFACE EROSIONAL FEATURE
--- EXISTING INFRASTRUCTURE	◇ SNAG
--- FLOODPLAIN EASEMENT	+ DEN
- - - NONPERENNIAL STREAM (EXISTING TOP OF BANK)	~ TREE DRIPLINE
--- PERENNIAL STREAM (EXISTING TOP OF BANK)	
--- JURISDICTIONAL WETLAND AREAS	
--- LTS --- LIMITS OF TREE SURVEY	

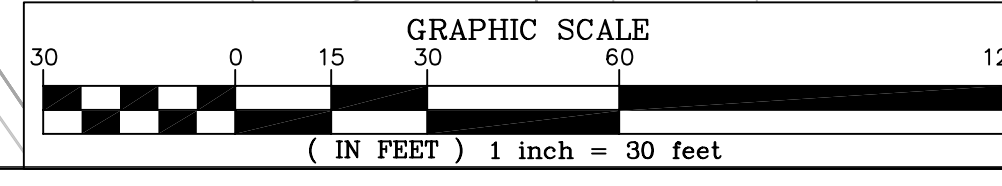


NORTHERN VIRGINIA STREAM RESTORATION BANK
THE GLADE - REACH 6
 Fairfax County, Virginia

Existing Conditions


 5300 Wellington Branch Drive, Suite 100 • Gainesville, VA 20155
 Phone 703 679 5600 • Fax 703 679 5601
 wetlandstudies.com

REVISIONS									
No.	Date	Description	Rev. By	App. By	No.	Date	Description	Rev. By	App. By



H. D.: VCS NAD 83 V. D.: NGVD 29
 Boundary and Topo Source:
 WSSI and Fairfax Digital Data
 Design Draft Approved
 SRP SRP FRG
 Sheet #
1 of 4
 Computer File Name:

REACH 6 LEGEND	
---	PROPERTY BOUNDARY & STREAM ESMNT, TEMP. GRADING & CONST. ESMNT, & INGRESS-EGRESS ESMNT
---	STREAM ESMNT, TEMP. GRADING & CONST. ESMNT, & INGRESS-EGRESS ESMNT
---	EXISTING CONTOURS (0.5')
---	EXISTING INFRASTRUCTURE
---	FLOODPLAIN EASEMENT
---	NONPERENNIAL STREAM (EXISTING TOP OF BANK)
---	PERENNIAL STREAM (EXISTING TOP OF BANK)
---	JURISDICTIONAL WETLAND AREAS
---	LTS - LIMITS OF TREE SURVEY
▲	NEST
□	CAVITY
○	SUBSURFACE EROSIONAL FEATURE
◇	SNAG
+	DEN
---	TREE DRIPLINE



MATCHLINE A - SEE SHEET 1

MATCHLINE B - SEE SHEET 3

NORTHERN VIRGINIA STREAM RESTORATION BANK
THE GLADE - REACH 6
 Fairfax County, Virginia

Existing Conditions


 5300 Wellington Branch Drive, Suite 100 • Gainesville, VA 20155
 Phone 703 679 5600 • Fax 703 679 5601
 wetlandstudies.com

REVISIONS									
No.	Date	Description	Rev. By	App. By	No.	Date	Description	Rev. By	App. By

H. D.: VCS NAD 83 V. D.: NGVD 29

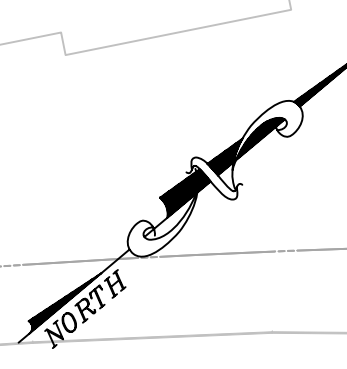
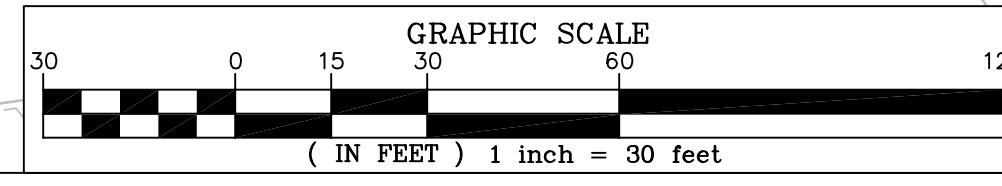
Boundary and Topo Source: WSSI and Fairfax Digital Data

Design	Draft	Approved
SRP	SRP	FRG

Sheet #
2 of 4

Computer File Name: L:\SRP\2009\C-00104-03.dwg

DATE: JUNE 27, 2009 SCALE: 1" = 30' C.I. = 0.5'



REACH 6 LEGEND	
---	PROPERTY BOUNDARY & STREAM ESMNT, TEMP. GRADING & CONST. ESMNT, & INGRESS-EGRESS ESMNT
---	STREAM ESMNT, TEMP. GRADING & CONST. ESMNT, & INGRESS-EGRESS ESMNT
---	EXISTING CONTOURS (0.5')
---	EXISTING INFRASTRUCTURE
---	FLOODPLAIN EASEMENT
---	NONPERENNIAL STREAM (EXISTING TOP OF BANK)
---	PERENNIAL STREAM (EXISTING TOP OF BANK)
---	JURISDICTIONAL WETLAND AREAS
---	LTS - LIMITS OF TREE SURVEY
▲	NEST
□	CAVITY
○	SUBSURFACE EROSIONAL FEATURE
◇	SNAG
+	DEN
---	TREE DRIPLINE



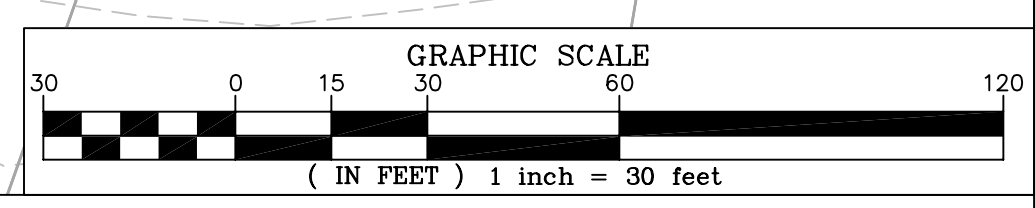
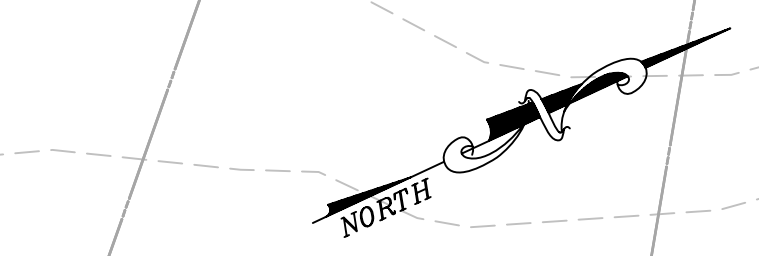
NORTHERN VIRGINIA STREAM RESTORATION BANK
 THE GLADE - REACH 6
 Fairfax County, Virginia

Existing Conditions



5300 Wellington Branch Drive, Suite 100 • Gainesville, VA 20155
 Phone 703 679 5600 • Fax 703 679 5601
 wetlandstudies.com

Copyright © 2009 Wetland Studies and Solutions, Inc.



REVISIONS									
No.	Date	Description	Rev. By	App. By	No.	Date	Description	Rev. By	App. By

H. D.: VCS NAD 83 V. D.: NGVD 29
 Boundary and Topo Source:
 WSSI and Fairfax Digital Data
 Design Draft Approved
 SRP SRP FRG
 Sheet #
 3 of 4
 Computer File Name:
 L:\SRP\2009\03\031014\031014.dwg

DATE: JUNE 27, 2009

SCALE: 1" = 30'

C.I. = 0.5'

REACH 6 LEGEND	
---	PROPERTY BOUNDARY & STREAM ESMNT, TEMP. GRADING & CONST. ESMNT, & INGRESS-EGRESS ESMNT
---	STREAM ESMNT, TEMP. GRADING & CONST. ESMNT, & INGRESS-EGRESS ESMNT
---	EXISTING CONTOURS (0.5')
---	EXISTING INFRASTRUCTURE
---	FLOODPLAIN EASEMENT
---	NONPERENNIAL STREAM (EXISTING TOP OF BANK)
---	PERENNIAL STREAM (EXISTING TOP OF BANK)
---	JURISDICTIONAL WETLAND AREAS
---	LTS --- LIMITS OF TREE SURVEY
▲	NEST
□	CAVITY
○	SUBSURFACE EROSIONAL FEATURE
◇	SNAG
+	DEN
---	TREE DRIPLINE

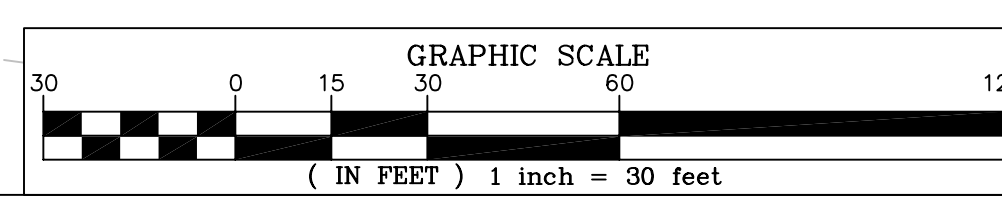


NORTHERN VIRGINIA STREAM RESTORATION BANK
 THE GLADE - REACH 6
 Fairfax County, Virginia

Existing Conditions

Wetland
 Studies and Solutions, Inc.
 5300 Wellington Branch Drive, Suite 100 • Gainesville, VA 20155
 Phone 703 679 5600 • Fax 703 679 5601
 wetlandstudies.com

REVISIONS										H. D.: VCS NAD 83 V. D.: NGVD 29	
No.	Date	Description	Rev. By	App. By	No.	Date	Description	Rev. By	App. By	Boundary and Topo Source: WSSI and Fairfax Digital Data	
										Design	SRP
										Draft	SRP
										Approved	FRG
										Sheet #	
										4 of 4	
										Computer File Name: I:\20090620\CV\20090620\CV.dwg	



DATE: JUNE 27, 2009

SCALE: 1" = 30'

C.I. = 0.5'