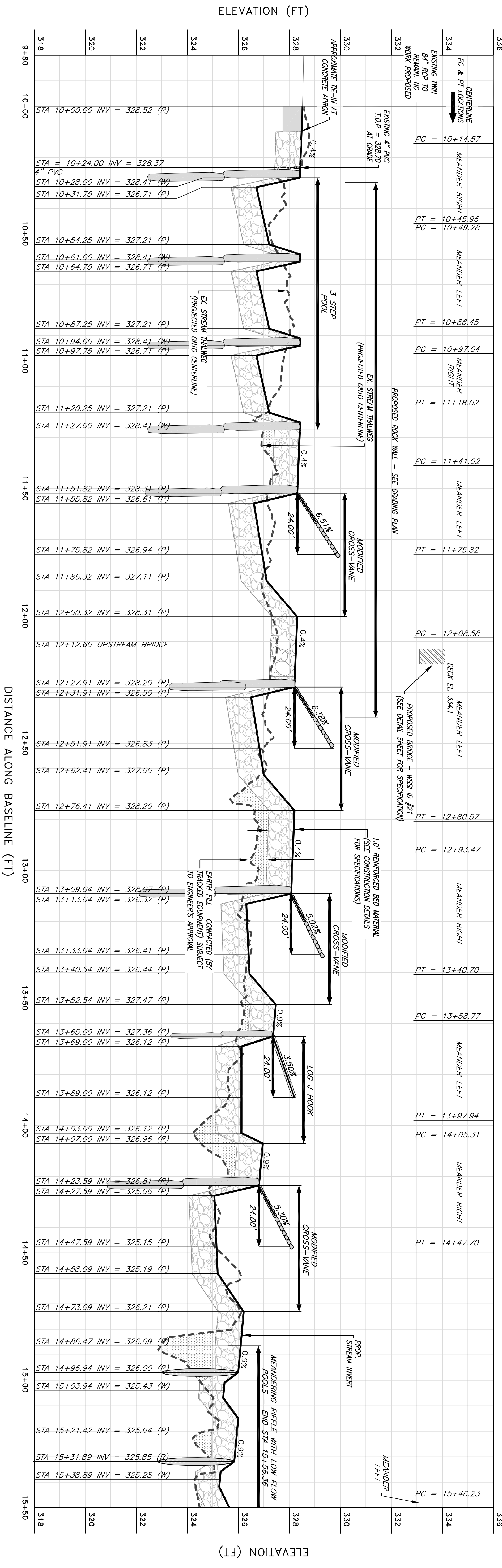
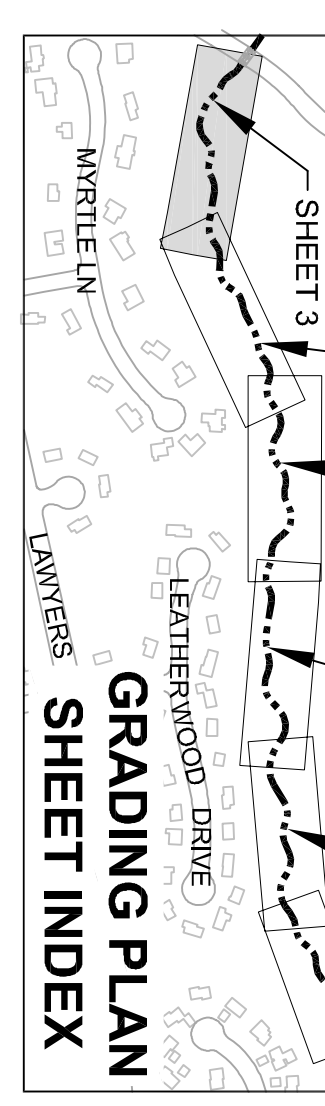
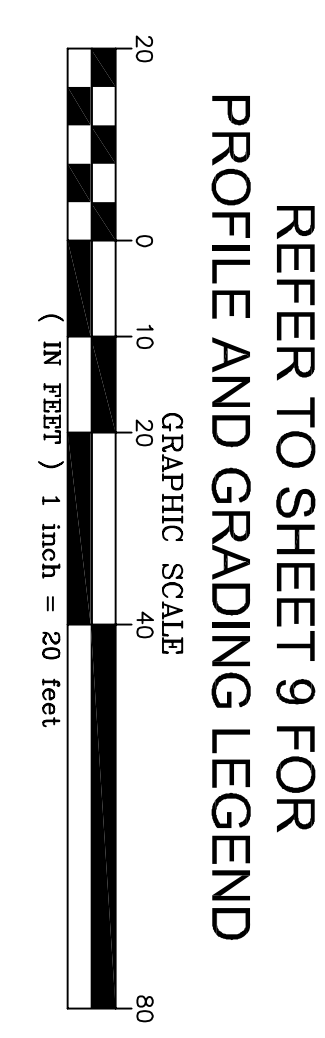


LONGITUDINAL PROFILE - REACH 5 (STA 10+00 TO STA 15+50)



LONGITUDINAL PROFILE
SCALE: H: 1" = 20'
V: 1" = 2'

REVISIONS				
No.	Date	Description	Rev. By	App. By

Horizontal Datum: VCS NAD 83
Vertical Datum: NGVD 29
Boundary and Topo Source: WSSSI and Fairfax Digital Data

DATE: SEPTEMBER 2009 SCALE: 1" = 20'



Northern Virginia Stream Restoration Bank
The Glade - Reach 5
Fairfax County, Virginia

Grading Plan and Longitudinal Profile

Copyright © 2009 Wetland Studies and Solutions, Inc.

5300 Wellington Branch Drive, Suite 100 • Gainesville, VA 20155
Phone 703 679 5600 • Fax 703 679 5601
wetlandstudies.com