

**STREAM LENGTH:
REACH 5 = 3,286'**

- REMOVE SEDIMENT FROM CULVERTS.

- PLACE FILTER FABRIC ON STOCKPILE AREA.

- ACCESS PATH DECK MATS SHALL BE PLACED ALONG ENTIRE LENGTH OF TEMPORARY ACCESS PATH UNLESS SPECIFIED OTHERWISE.

- MOVE LOGS INTO FLOODPLAIN AND SECURE WITH DUCKBILL ANCHORS.

- PROPOSED ALIGNMENT PROTECTS EXPOSED ROOTS ON TREE 24157 AND TREE 23021.

REACH 5 10+00 TO 33+50
WIDTH = 22.0'
DEPTH = 2.3'
PROPOSED LENGTH = 2,460'
R_c MIN = 55'

PROPOSED MEANDERS ARE MINIMUM RADII.

PROPOSED MEANDER IS MINIMUM RADII.

PROPOSED MEANDERS ARE MINIMUM RADII.

ROCK WALL PROPOSED (STA. 10+00 TO STA. 12+40) TO PROTECT TREES ON RIGHT BANK.

BRIDGE TO BE REPLACED WSSI ID #21 NO RESTON PLAC. #

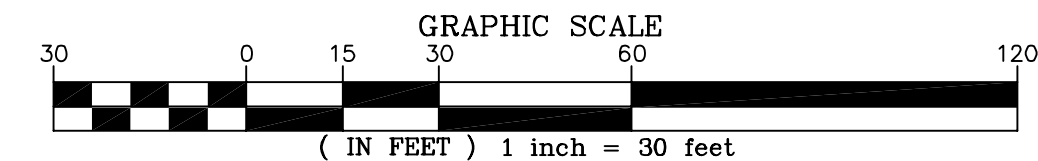
PROPOSED MEANDERS ARE MINIMUM RADII.

EXISTING MEANDER IS VERY TIGHT. PROPOSED MEANDER SIZE MINIMIZES TREE IMPACTS.

REVISED LIMITS OF CLEARING AND TEMPORARY ACCESS PATH.

REACH 5 LEGEND

--- PROPERTY BOUNDARY & STREAM ESMT, TEMP. GRADING & CONST. ESMT, & INGRESS-EGRESS ESMT	▲ NEST
--- STREAM ESMT, TEMP. GRADING & CONST. ESMT, & INGRESS-EGRESS ESMT	□ CAVITY
--- EXISTING CONTOURS (0.5')	○ SUBSURFACE EROSIONAL FEATURE
--- EXISTING INFRASTRUCTURE	◇ SNAG
--- FLOODPLAIN EASEMENT	⊕ DEN
--- NONPERENNIAL STREAM (EXISTING TOP OF BANK)	--- TREE DRIFLINE
--- PERENNIAL STREAM (EXISTING TOP OF BANK)	--- ACCESS PATH
--- JURISDICTIONAL WETLAND AREAS	✗ TREE TO BE REMOVED
--- LTS LIMITS OF TREE SURVEY	
--- PROPOSED TOP OF BANK	
--- PROPOSED CENTERLINE	
--- PROPOSED CONTOURS (0.5')	
--- LOC-TP LIMITS OF CLEARING / TREE PROTECTION	



NORTHERN VIRGINIA STREAM RESTORATION BANK
THE GLADE - REACH 5
 Fairfax County, Virginia



PRELIMINARY PLAN

Copyright © 2009 Wetland Studies and Solutions, Inc.

REVISIONS					H. D.: VCS NAD 83 V. D.: NGVD 29	
No.	Date	Description	Rev. By	App. By	No.	Date
1	7/24/2009	Revised limits of clearing and access path	KLS	FRG		
2	7/24/2009	Revised alignment; stream lengths	KLS	FRG		
3	7/24/2009	Fine grading around bridges and walls; specified batter (as needed); added spot shots	KLS	FRG		
4	7/24/2009	Add trees to be removed (24054, 24064, 32030, 32009, 32110)	KLS	FRG		
5	7/24/2009	Trees to be saved (23000, 23001)	KLS	FRG		

DATE: JUNE 27, 2009 SCALE: 1" = 30' C.I. = 0.5'

**STREAM LENGTH:
REACH 5 = 3,286'**

REACH 5 10+00 TO 33+50
WIDTH = 22.0'
DEPTH = 2.3'
PROPOSED LENGTH = 2,350'
R_c MIN = 55'

REACH 5 33+50 TO 39+55
WIDTH = 23.0'
DEPTH = 2.3'
PROPOSED LENGTH = 605'
R_c MIN = 58'

REACH 5 33+50 TO 39+55
WIDTH = 23.0'
DEPTH = 2.3'
PROPOSED LENGTH = 605'
R_c MIN = 58'

- STREAM CROSS SECTION WILL GRADUALLY TRANSITION FROM PROPOSED DESIGN TO EXISTING CONDITIONS TO PROVIDE SMOOTH TIE-OUT.

- EXISTING MEANDERS VERY TIGHT. CANNOT FIT PROPOSED CHANNEL BETWEEN TREE CLUSTERS.

- PROPOSED MEANDER IS MINIMUM RADIUS.

- BRIDGE TO BE REPLACED WSSI ID #24 RESTON PLAC. #47

- STREAM REALIGNED AND BRIDGE SKEWED TO PROTECT HOLLY (#23471)

- ROCK WALL SHALL EXTEND FROM STRUCTURE ARM TO STA 38+10 AT BANKFULL ELEVATION

- ROCK WALL PROPOSED (STA. 37+20 TO STA. 37+80) TO PROTECT TRAIL FROM FLOODING.

- ROCK WALL SHALL EXTEND FROM STRUCTURE ARM TO STA 39+50 AT BANKFULL ELEVATION

- PEDESTRIAN BARRICADE

- RELOCATED BRIDGE TO AVOID SANITARY SEWER.

- AS DIRECTED BY RA, WSSI SHALL REINSTALL BEAVER BARRICADE UNDER THE NEW BRIDGE.

- MOVE LOG INTO FLOODPLAIN AND SECURE WITH DUCKBILL ANCHORS.

- TRAIL TO BE RAISED 1 ABOVE THE 2-YR FLOODPLAIN ELEVATION FROM STA. 26+90 TO 30+20 AND STA. 30+95 TO 38+10.

- TREES MAY BE IMPACTED BY TRAIL RAISING.

- PROPOSED ALIGNMENT AND STRUCTURE DESIGNED TO PROTECT HOLLY.

- PROPOSED ALIGNMENT DESIGNED TO PROTECT 24369 AND 24319.

- TREE MAY BE IMPACTED BY TRAIL RAISING.

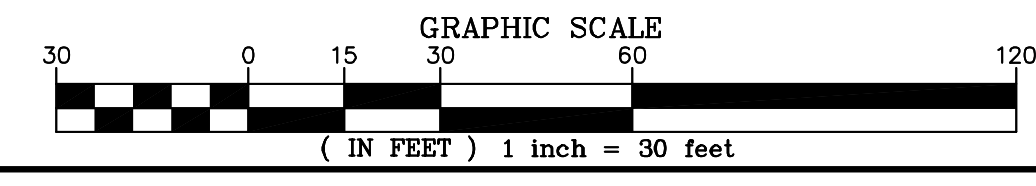
- TREE MAY BE IMPACTED BY TRAIL RAISING.

- SHIFTED STREAM AWAY FROM TRAIL.

- RELOCATED STREAM AWAY FROM TRAIL.

REACH 5 LEGEND

---	PROPERTY BOUNDARY & STREAM ESMNT, TEMP. GRADING & CONST. ESMNT, & INGRESS-EGRESS ESMNT	▲	NEST
---	STREAM ESMNT, TEMP. GRADING & CONST. ESMNT, & INGRESS-EGRESS ESMNT	■	CAVITY
---	EXISTING CONTOURS (0.5)	○	SUBSURFACE EROSIONAL FEATURE
---	EXISTING INFRASTRUCTURE	◇	SNAG
---	FLOODPLAIN EASEMENT	+	DEN
---	NONPERENNIAL STREAM (EXISTING TOP OF BANK)	—	TREE DRIFLINE
---	PERENNIAL STREAM (EXISTING TOP OF BANK)	—	ACCESS PATH
---	JURISDICTIONAL WETLAND AREAS	✗	TREE TO BE REMOVED
---	LTS - LIMITS OF TREE SURVEY		
---	PROPOSED TOP OF BANK		
---	PROPOSED CENTERLINE		
---	PROPOSED CONTOURS (0.5)		
---	-LOC-TP- LIMITS OF CLEARING / TREE PROTECTION		



NORTHERN VIRGINIA STREAM RESTORATION BANK
THE GLADE - REACH 5
Fairfax County, Virginia

PRELIMINARY PLAN

Copyright © 2009 Wetland Studies and Solutions, Inc.

Wetland
Studies and Solutions, Inc.[®]

5300 Wellington Branch Drive, Suite 100 • Gainesville, VA 20155
Phone 703 679 5600 • Fax 703 679 5601
wetlandstudies.com

H. D.: VCS NAD 83 V. D.: NGVD 29

REVISIONS		Boundary and Topo Source: WSSI and Fairfax Digital Data							
No.	Date	Description	Rev. By	App. By	No.	Date	Description	Rev. By	App. By
1	7/24/2009	Revised limits of clearing and access path	KLS	FRG	6	7/24/2009	Removed trail grading notes	KLS	FRG
2	7/24/2009	Revised alignment; stream lengths	KLS	FRG	7	7/31/2009	Added temp. mulch trail, revised LOC	KLS	FRG
3	7/24/2009	Fine grading around bridges and walls, and specified batter (as needed); added spot shots	KLS	FRG	8	7/31/2009	Added bridge note	KLS	FRG
4	7/24/2009	Add trees to be removed (23484)	KLS	FRG					
5	7/24/2009	Trees to be saved (24353, 24354, 34705, 24382, 24398, 23471)	KLS	FRG					

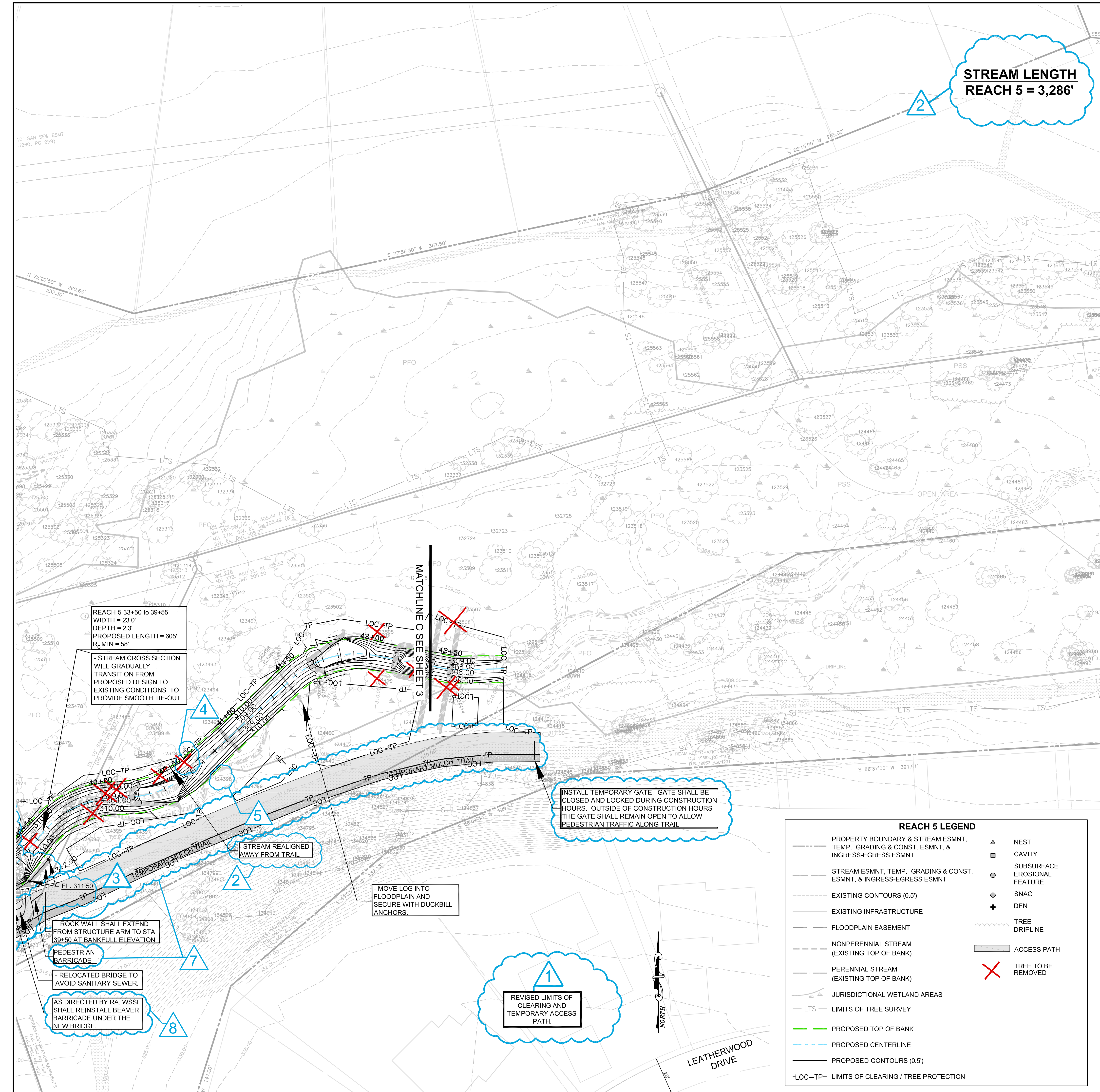
DATE: JUNE 27, 2009 SCALE: 1" = 30' C.I. = 0.5'

Sheet #
3 of 4

Computer File Name:
1:2009062010C:0004-2348-10-011047.mxd

1
REVISED LIMITS OF CLEARING AND TEMPORARY ACCESS PATH.

MYRTLE LANE



**STREAM LENGTH
REACH 5 = 3,286'**

REACH 5 33+50 TO 39+55
WIDTH = 23.0'
DEPTH = 2.3'
PROPOSED LENGTH = 605'
R_{MIN} = 58'

STREAM REALIGNED
AWAY FROM TRAIL

INSTALL TEMPORARY GATE. GATE SHALL BE
CLOSED AND LOCKED DURING CONSTRUCTION
HOURS. OUTSIDE OF CONSTRUCTION HOURS
THE GATE SHALL REMAIN OPEN TO ALLOW
PEDESTRIAN TRAFFIC ALONG TRAIL

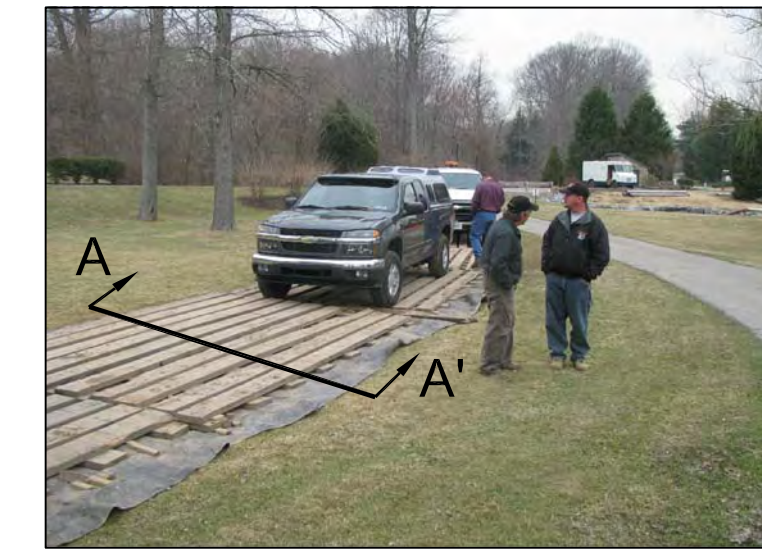
MOVE LOG INTO
FLOODPLAIN AND
SECURE WITH DUCKBILL
ANCHORS.

REVISED LIMITS OF
CLEARING AND
TEMPORARY ACCESS
PATH.

REACH 5 LEGEND

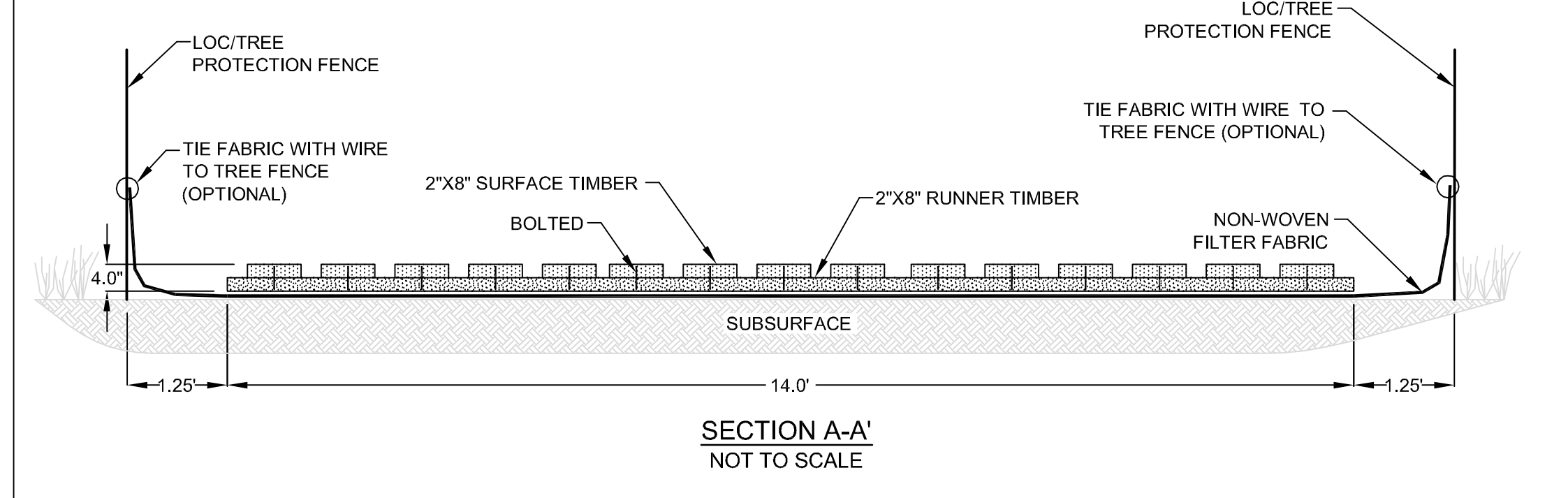
—	PROPERTY BOUNDARY & STREAM ESMNT, TEMP. GRADING & CONST. ESMNT, & INGRESS-EGRESS ESMNT	▲	NEST
---	STREAM ESMNT, TEMP. GRADING & CONST. ESMNT, & INGRESS-EGRESS ESMNT	□	CAVITY
---	EXISTING CONTOURS (0.5')	○	SUBSURFACE EROSIONAL FEATURE
---	EXISTING INFRASTRUCTURE	◆	SNAG
---	FLOODPLAIN EASEMENT	+	DEN
---	NONPERENNIAL STREAM (EXISTING TOP OF BANK)	~	TREE DRIPLINE
---	PERENNIAL STREAM (EXISTING TOP OF BANK)	—	ACCESS PATH
---	JURISDICTIONAL WETLAND AREAS	✗	TREE TO BE REMOVED
---	LTS - LIMITS OF TREE SURVEY		
---	PROPOSED TOP OF BANK		
---	PROPOSED CENTERLINE		
---	PROPOSED CONTOURS (0.5')		
---	LOC-TP - LIMITS OF CLEARING / TREE PROTECTION		

ACCESS PATH DECK MAT
NOT TO SCALE

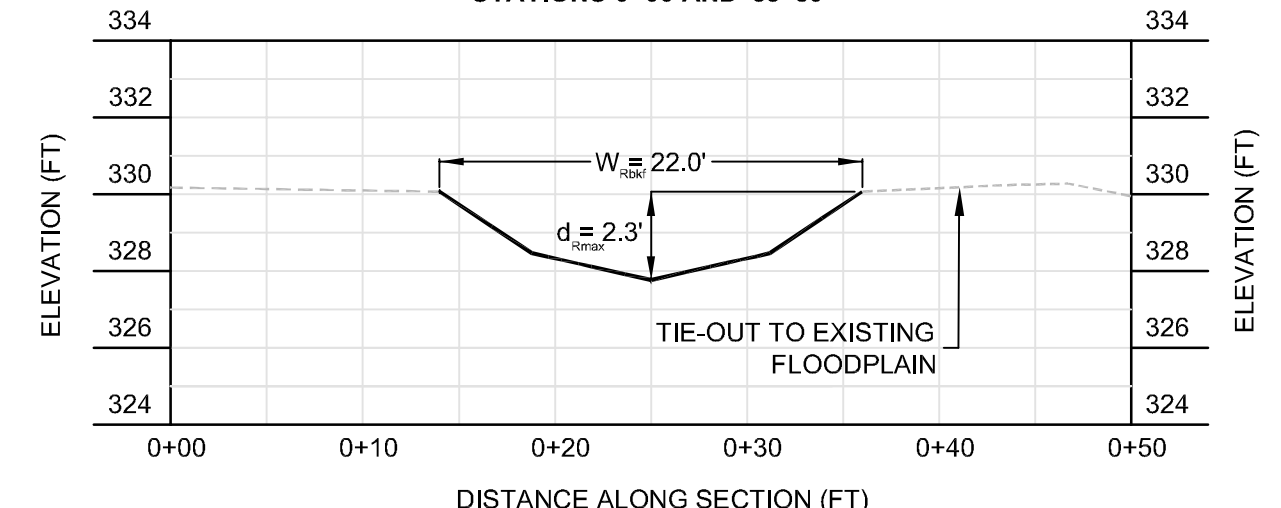


EXAMPLE INSTALLATION
10' WIDE DECK MAT AS SHOWN

- NOTES:
- MAT SHALL BE "DECK MAT" BY CAROLINA MAT INCORPORATED OR APPROVED EQUAL.
 - MAT SHALL BE PLACED ALONG ENTIRE LENGTH OF TEMPORARY ACCESS PATH UNLESS SPECIFIED OTHERWISE.

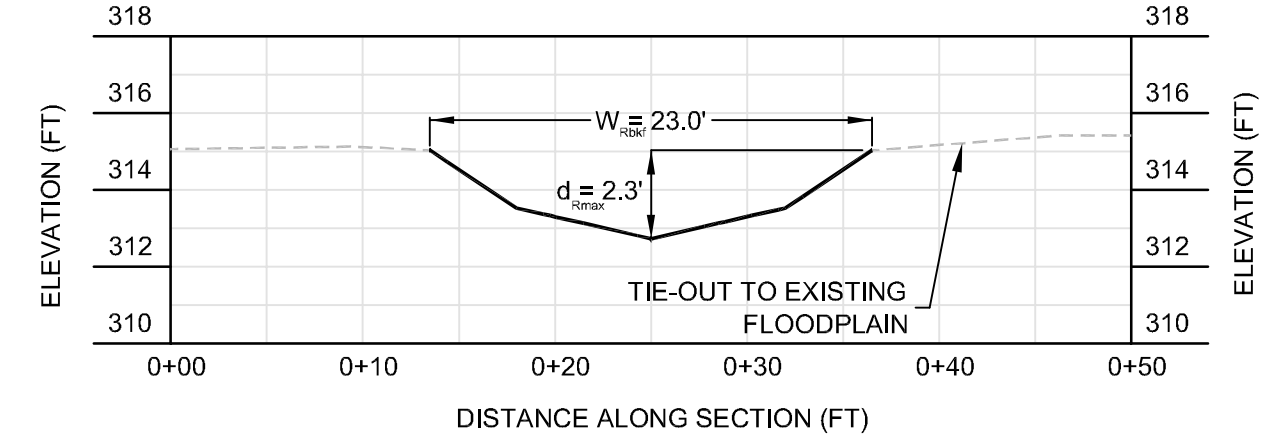


TYPICAL PROPOSED RIFFLE CROSS SECTION
STATIONS 0+00 AND 33+50



CROSS SECTION
LEGEND
— PROPOSED STREAM
--- EXISTING FLOODPLAIN
SCALE:
H/V: 2:1
* ELEVATIONS ARE
RELATIVE

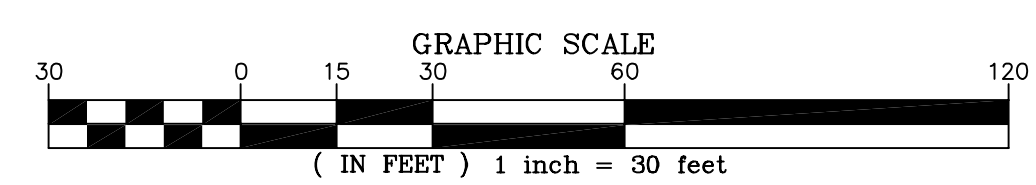
TYPICAL PROPOSED RIFFLE CROSS SECTION
STATION 33+50 AND 39+55



REACH 5 - PROPOSED BRIDGE DIMENSIONS

REACH NAME	WSSI ID#	RESTON PLAC. #	BANKFULL WIDTH (FT)	EXISTING		PROPOSED	
				LENGTH (FT)	WIDTH (FT)	LENGTH (FT)	WIDTH (FT)
REACH 5	21	N/A	22	24.5	4	40	6
	22	109	N/A	20.5	9.5	NOT TO BE REPLACED	
	23	48	22	20	4	40	6
	24	47	23	18	10	40	10

- NOTES:
- BOTTOM OF BRIDGE DECK TO BE 2 FT HIGHER THAN BANKFULL DEPTH



NORTHERN VIRGINIA STREAM RESTORATION BANK
THE GLADE - REACH 5
Fairfax County, Virginia

PRELIMINARY PLAN



5300 Wellington Branch Drive, Suite 100 • Gainesville, VA 20155
Phone 703 679 5600 • Fax 703 679 5601
wetlandstudies.com

Copyright © 2009 Wetland Studies and Solutions, Inc.

REVISIONS						H. D.: VCS NAD 83 V. D.: NGVD 29			
No.	Date	Description	Rev. By	App. By	No.	Date	Description	Rev. By	App. By
1	7/24/2009	Revised limits of clearing and access path	KLS	FRG					
2	7/24/2009	Revised alignment; stream lengths	KLS	FRG					
3	7/24/2009	Fine grading around bridges and walls, and specified batter (as needed); added spot shots	KLS	FRG					
4	7/24/2009	Add trees to be removed (23484)	KLS	FRG					
7	7/31/2009	Added temp. mulch trail, revised LOC	KLS	FRG					

Boundary and Topo Source: WSSI and Fairfax Digital Data

Design: KLS
Draft: KLS
Approved: FRG

Sheet #
4 of 4

Computer File Name:
L:\2009\2009\03\000A-DCR-10-01\04\FinalPlan.dwg

DATE: JUNE 27, 2009 SCALE: 1" = 30' C.I. = 0.5'