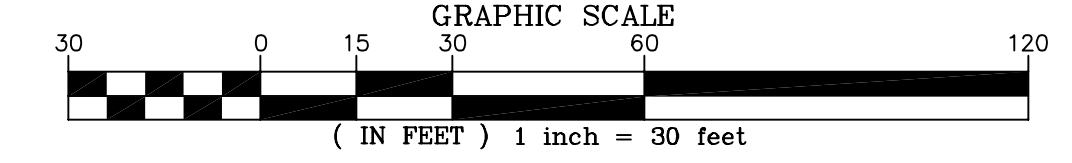


REACH 5 LEGEND

---	PROPERTY BOUNDARY & STREAM ESMNT, TEMP. GRADING & CONST. ESMNT, & INGRESS-EGRESS ESMNT	▲	NEST
---	STREAM ESMNT, TEMP. GRADING & CONST. ESMNT, & INGRESS-EGRESS ESMNT	□	CAVITY
---	EXISTING CONTOURS (0.5')	○	SUBSURFACE EROSIONAL FEATURE
---	EXISTING INFRASTRUCTURE	◆	SNAG
---	FLOODPLAIN EASEMENT	+	DEN
---	NONPERENNIAL STREAM (EXISTING TOP OF BANK)	~	TREE DRIPLINE
---	PERENNIAL STREAM (EXISTING TOP OF BANK)	▬	ACCESS PATH
---	JURISDICTIONAL WETLAND AREAS	✗	TREE TO BE REMOVED
---	LTS - LIMITS OF TREE SURVEY		
---	PROPOSED TOP OF BANK		
---	PROPOSED CENTERLINE		
---	PROPOSED CONTOURS (0.5')		
---	-LOC-TP- LIMITS OF CLEARING / TREE PROTECTION		



NORTHERN VIRGINIA STREAM RESTORATION BANK
THE GLADE - REACH 5
 Fairfax County, Virginia

PRELIMINARY PLAN

Copyright © 2009 Wetland Studies and Solutions, Inc.

5300 Wellington Branch Drive, Suite 100 • Gainesville, VA 20155
 Phone 703 679 5600 • Fax 703 679 5601
 wetlandstudies.com

REVISIONS					H. D.: VCS NAD 83 V. D.: NGVD 29		
No.	Date	Description	Rev. By	App. By	No.	Date	Description
1	7/24/2009	Revised limits of clearing and access path	KLS	FRG			
2	7/24/2009	Revised alignment; stream lengths	KLS	FRG			
3	7/24/2009	Fine grading around bridges and walls; specified batter (as needed); added spot shots	KLS	FRG			
4	7/24/2009	Add trees to be removed (24054, 24064, 32030, 32009, 32110)	KLS	FRG			
5	7/24/2009	Trees to be saved (23000, 23001)	KLS	FRG			

Boundary and Topo Source: WSSI and Fairfax Digital Data

Design	Draft	Approved
KLS	KLS	FRG

Sheet #
1 of 4

Computer File Name:
 L:\2009\3000\0000-2300-2300-1000\1000-1000-1000-1000.dwg

DATE: JUNE 27, 2009 SCALE: 1" = 30' C.I. = 0.5'

**STREAM LENGTH:
REACH 5 = 3,286'**

BRIDGE TO REMAIN IN PLACE
WSSI ID #22
RESTON PLAC. #109

DO NOT REMOVE TREES
ON LEFT BANK
(23081-23083, 23086-23088,
23186-23187)
FILL IN AND AROUND
ROOTS TO STABILIZE.

MOVE LOG INTO
FLOODPLAIN AND
SECURE WITH DUCKBILL
ANCHORS.

EXISTING MEANDER VERY
TIGHT AND WITHIN
SANITARY SEWER ESMT.
RELOCATED STREAM TO
AVOID SANITARY SEWER

RELOCATED BRIDGE AND
TRAIL TO PROTECT TREES.

TRANSPLANT EXISTING
SPICEBUSH TO FUTURE
STREAM EDGE.
ROCK WALL SHALL EXTEND
FROM STRUCTURE ARM TO STA
39+50 AT BANKFULL ELEVATION

BRIDGE TO BE REPLACED
WSSI ID #23
RESTON PLAC. #48

PROPOSED
MEANDERS ARE
MINIMUM RADII.

END DECK MATTING, USE
EXISTING PAVED PATH FOR
TEMPORARY ACCESS
DOWNSTREAM OF STA. 25+20

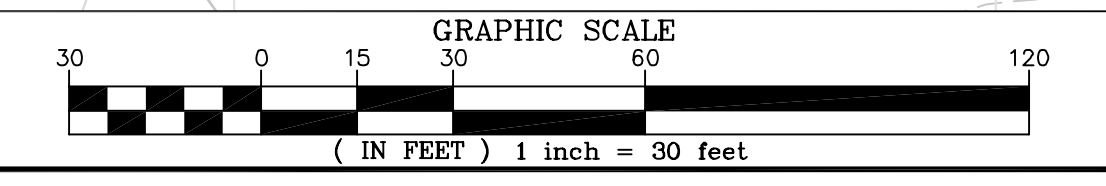
TREE MAY BE
IMPACTED BY
TRAIL RAISING.

RELOCATED STREAM
AWAY FROM TRAIL.

REVISED LIMITS OF
CLEARING AND
TEMPORARY ACCESS
PATH.

REACH 5 LEGEND

--- PROPERTY BOUNDARY & STREAM ESMT, TEMP. GRADING & CONST. ESMT, & INGRESS-EGRESS ESMT	▲ NEST
--- STREAM ESMT, TEMP. GRADING & CONST. ESMT, & INGRESS-EGRESS ESMT	□ CAVITY
--- EXISTING CONTOURS (0.5)	○ SUBSURFACE EROSIONAL FEATURE
--- EXISTING INFRASTRUCTURE	◆ SNAG
--- FLOODPLAIN EASEMENT	⊕ DEN
--- NONPERENNIAL STREAM (EXISTING TOP OF BANK)	--- TREE DRIPLINE
--- PERENNIAL STREAM (EXISTING TOP OF BANK)	--- ACCESS PATH
--- JURISDICTIONAL WETLAND AREAS	✗ TREE TO BE REMOVED
--- LTS --- LIMITS OF TREE SURVEY	
--- PROPOSED TOP OF BANK	
--- PROPOSED CENTERLINE	
--- PROPOSED CONTOURS (0.5)	
--- LOC-TP --- LIMITS OF CLEARING / TREE PROTECTION	



**NORTHERN VIRGINIA STREAM RESTORATION BANK
THE GLADE - REACH 5**
Fairfax County, Virginia

PRELIMINARY PLAN

Wetland
Studies and Solutions, Inc.
5300 Wellington Branch Drive, Suite 100 • Gainesville, VA 20155
Phone 703 679 5600 • Fax 703 679 5601
wetlandstudies.com

Copyright © 2009 Wetland Studies and Solutions, Inc.

REVISIONS									
No.	Date	Description	Rev. By	App. By	No.	Date	Description	Rev. By	App. By
1	7/24/2009	Revised limits of clearing and access path	KLS	FRG	6	7/24/2009	Removed trail grading notes	KLS	FRG
2	7/24/2009	Revised alignment; stream lengths	KLS	FRG					
3	7/24/2009	Fine grading around bridges and walls; specified batter (as needed); added spot shots	KLS	FRG					
4	7/24/2009	Add trees to be removed (23188, 23278, 24307, 23308)	KLS	FRG					
5	7/24/2009	Trees to be saved (24314, 24318, 23318, 23319)	KLS	FRG					

DATE: JUNE 27, 2009 SCALE: 1" = 30' C.I. = 0.5'

Boundary and Topo Source: WSSI and Fairfax Digital Data		
Design	Draft	Approved
KLS	KLS	FRG
Sheet #		
2 of 4		
Computer File Name:		

STREAM LENGTH:
REACH 5 = 3,286'

REACH 5 10+00 TO 33+50
WIDTH = 22.0'
DEPTH = 2.3'
PROPOSED LENGTH = 2,350'
R_c MIN = 55'

REACH 5 33+50 TO 39+55
WIDTH = 23.0'
DEPTH = 2.3'
PROPOSED LENGTH = 605'
R_c MIN = 58'

REACH 5 33+50 TO 39+55
WIDTH = 23.0'
DEPTH = 2.3'
PROPOSED LENGTH = 605'
R_c MIN = 58'

- STREAM CROSS SECTION WILL GRADUALLY TRANSITION FROM PROPOSED DESIGN TO EXISTING CONDITIONS TO PROVIDE SMOOTH TIE-OUT.

- EXISTING MEANDERS VERY TIGHT, CANNOT FIT PROPOSED CHANNEL BETWEEN TREE CLUSTERS.

- PROPOSED MEANDER IS MINIMUM RADIUS.

- BRIDGE TO BE REPLACED WSSJ ID #24 RESTON PLAC. #47

ROCK WALL SHALL EXTEND FROM STRUCTURE ARM TO STA 38+10 AT BANKFULL ELEVATION.

ROCK WALL PROPOSED STA. 37+20 TO STA. 37+80 TO PROTECT TRAIL FROM FLOODING.

- STREAM REALIGNED AND BRIDGE SKEWED TO PROTECT HOLLY (#23471)

- STREAM REALIGNED AWAY FROM TRAIL

- MOVE LOG INTO FLOODPLAIN AND SECURE WITH DUCKBILL ANCHORS.

ROCK WALL SHALL EXTEND FROM STRUCTURE ARM TO STA 39+50 AT BANKFULL ELEVATION.

- RELOCATED BRIDGE TO AVOID SANITARY SEWER.

- TREE MAY BE IMPACTED BY TRAIL RAISING.

- SHIFTED STREAM AWAY FROM TRAIL.

- RELOCATED STREAM AWAY FROM TRAIL.

TREES MAY BE IMPACTED BY TRAIL RAISING.

PROPOSED ALIGNMENT AND STRUCTURE DESIGNED TO PROTECT HOLLY.

- TRAIL TO BE RAISED 1 ABOVE THE 2-YR FLOODPLAIN ELEVATION FROM STA. 26+90 TO 30+20 AND STA. 30+95 TO 38+10.

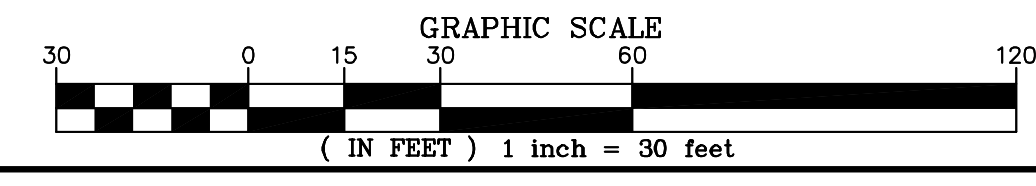
PROPOSED ALIGNMENT DESIGNED TO PROTECT 24369 AND 24319.

- TREE MAY BE IMPACTED BY TRAIL RAISING.

REVISED LIMITS OF CLEARING AND TEMPORARY ACCESS PATH.

REACH 5 LEGEND

---	PROPERTY BOUNDARY & STREAM ESMNT, TEMP. GRADING & CONST. ESMNT, & INGRESS-EGRESS ESMNT	▲	NEST
---	STREAM ESMNT, TEMP. GRADING & CONST. ESMNT, & INGRESS-EGRESS ESMNT	■	CAVITY
---	EXISTING CONTOURS (0.5)	○	SUBSURFACE EROSIONAL FEATURE
---	EXISTING INFRASTRUCTURE	◇	SNAG
---	FLOODPLAIN EASEMENT	+	DEN
---	NONPERENNIAL STREAM (EXISTING TOP OF BANK)	—	TREE DRIFLINE
---	PERENNIAL STREAM (EXISTING TOP OF BANK)	—	ACCESS PATH
---	JURISDICTIONAL WETLAND AREAS	✗	TREE TO BE REMOVED
---	LTS - LIMITS OF TREE SURVEY		
---	PROPOSED TOP OF BANK		
---	PROPOSED CENTERLINE		
---	PROPOSED CONTOURS (0.5)		
---	-LOC-TP- LIMITS OF CLEARING / TREE PROTECTION		



NORTHERN VIRGINIA STREAM RESTORATION BANK
THE GLADE - REACH 5
Fairfax County, Virginia

PRELIMINARY PLAN

Copyright © 2009 Wetland Studies and Solutions, Inc.

Wetland
Studies and Solutions, Inc.[®]

5300 Wellington Branch Drive, Suite 100 • Gainesville, VA 20155
Phone 703 679 5600 • Fax 703 679 5601
wetlandstudies.com

REVISIONS				H. D.: VCS NAD 83 V. D.: NGVD 29					
No.	Date	Description	Rev. By	App. By	No.	Date	Description	Rev. By	App. By
1	7/24/2009	Revised limits of clearing and access path	KLS	FRG	6	7/24/2009	Removed trail grading notes	KLS	FRG
2	7/24/2009	Revised alignment; stream lengths	KLS	FRG					
3	7/24/2009	Fine grading around bridges and walls, and specified batter (as needed); added spot shots	KLS	FRG					
4	7/24/2009	Add trees to be removed (23484)	KLS	FRG					
5	7/24/2009	Trees to be saved (24353, 24354, 34705, 24382, 24398, 23471)	KLS	FRG					

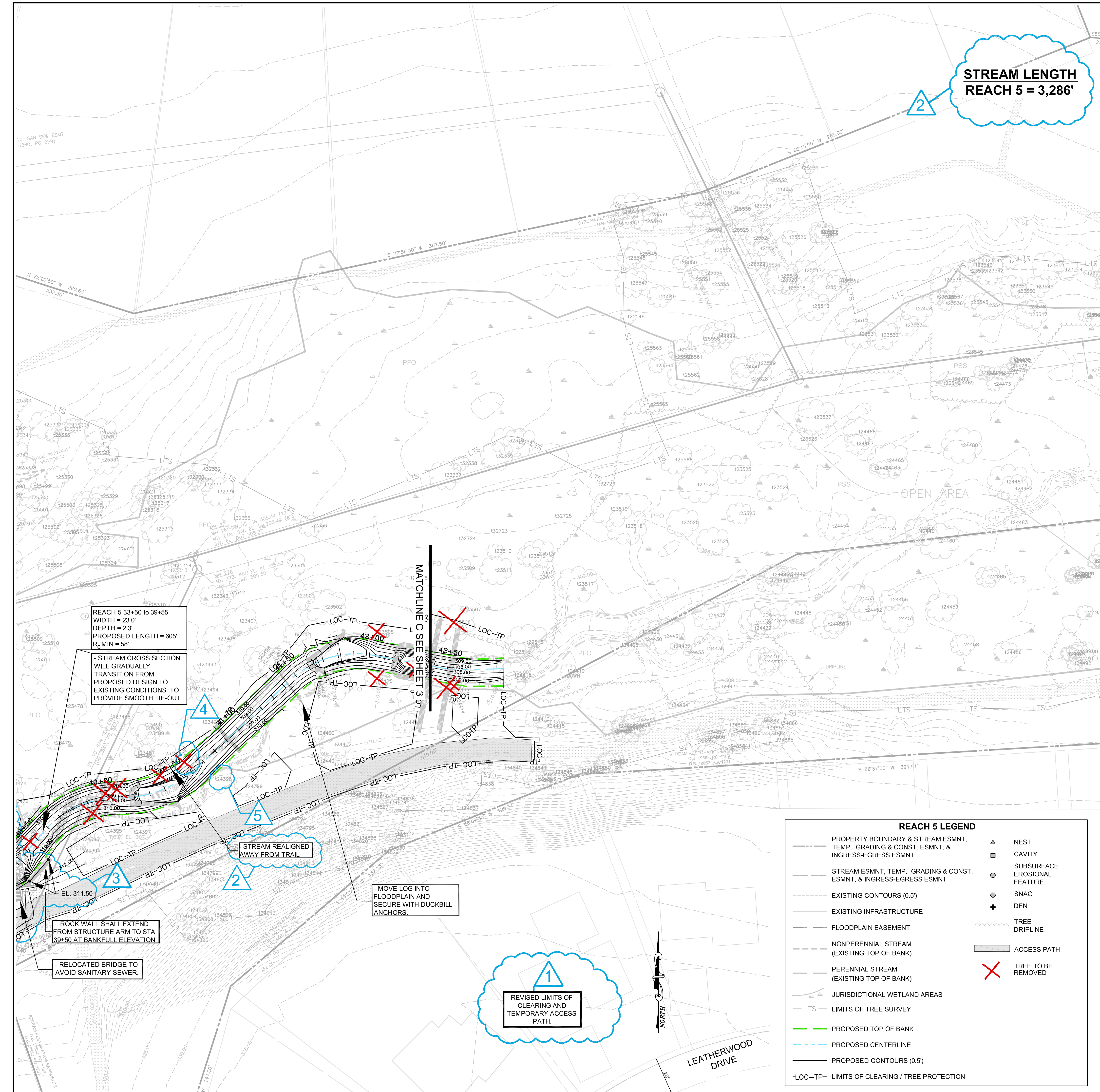
Boundary and Topo Source: WSSI and Fairfax Digital Data

Design	Draft	Approved
KLS	KLS	FRG

Sheet #
3 of 4

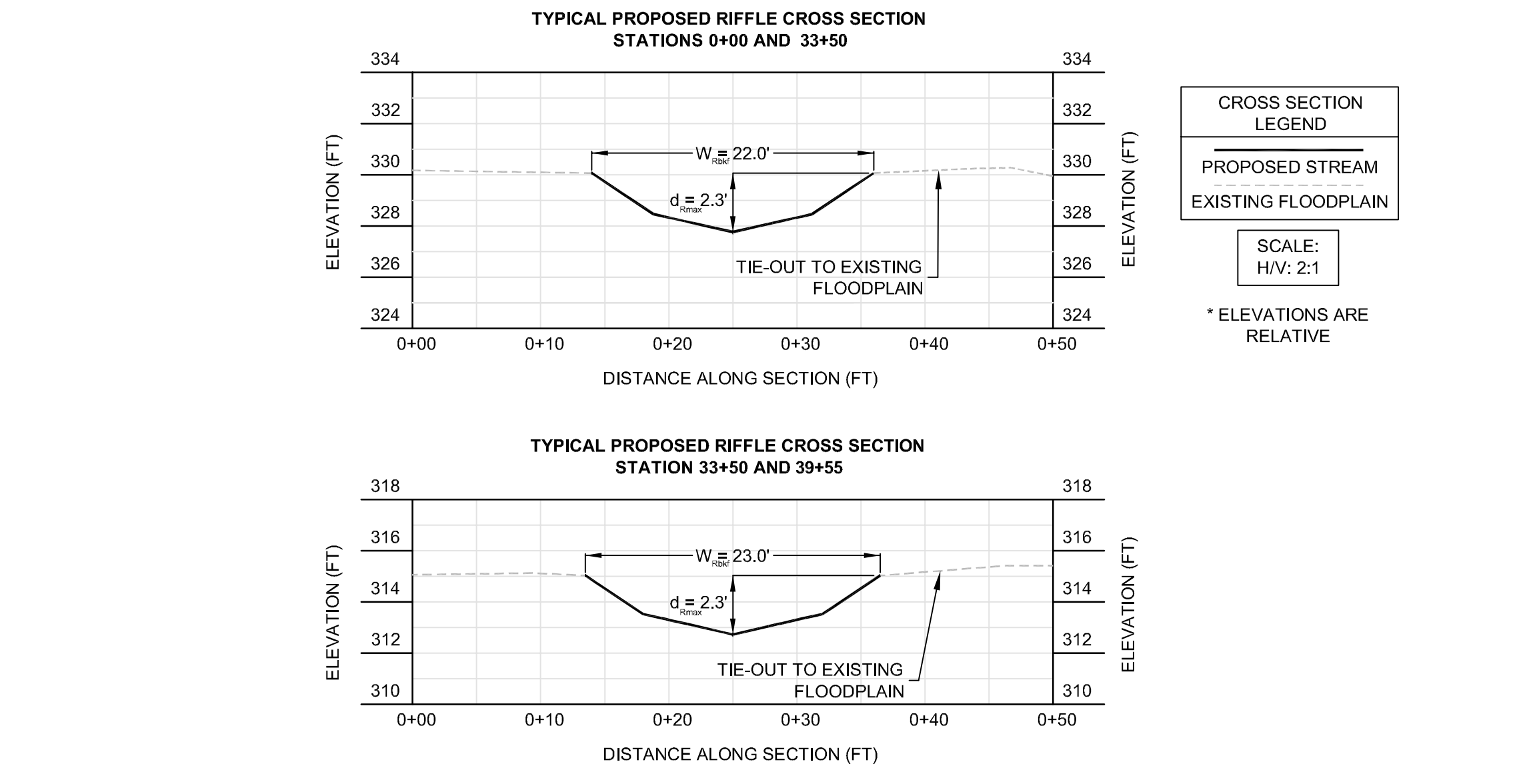
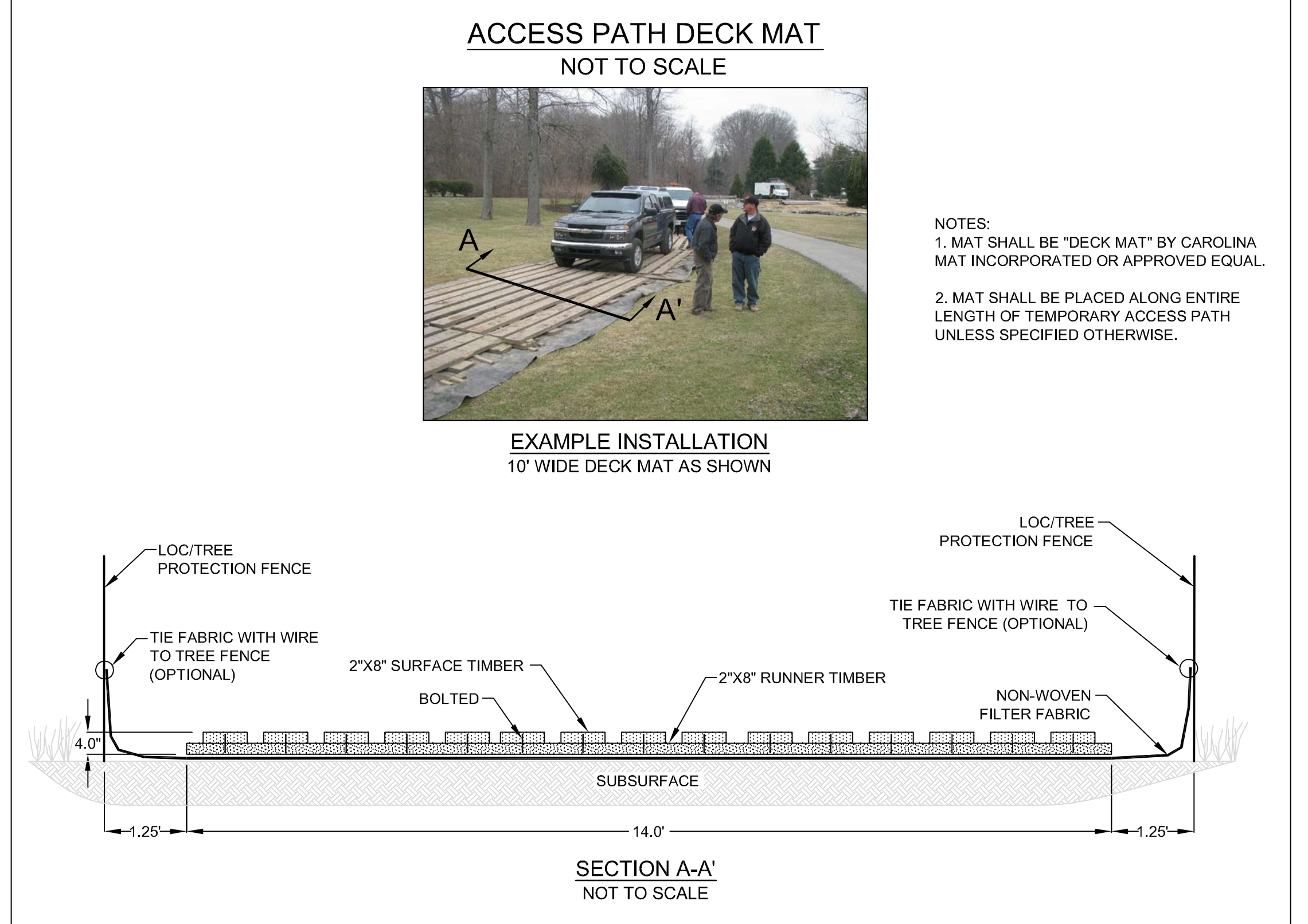
Computer File Name:
1-2009062001C-0200-0-250-1-001208-001.dwg

DATE: JUNE 27, 2009 SCALE: 1" = 30' C.I. = 0.5'



REACH 5 LEGEND

—	PROPERTY BOUNDARY & STREAM ESMNT, TEMP. GRADING & CONST. ESMNT, & INGRESS-EGRESS ESMNT	▲	NEST
---	STREAM ESMNT, TEMP. GRADING & CONST. ESMNT, & INGRESS-EGRESS ESMNT	□	CAVITY
---	EXISTING CONTOURS (0.5')	○	SUBSURFACE EROSIONAL FEATURE
---	EXISTING INFRASTRUCTURE	◆	SNAG
---	FLOODPLAIN EASEMENT	+	DEN
---	NONPERENNIAL STREAM (EXISTING TOP OF BANK)	~	TREE DRIPLINE
---	PERENNIAL STREAM (EXISTING TOP OF BANK)	—	ACCESS PATH
---	JURISDICTIONAL WETLAND AREAS	✗	TREE TO BE REMOVED
---	LTS - LIMITS OF TREE SURVEY		
---	PROPOSED TOP OF BANK		
---	PROPOSED CENTERLINE		
---	PROPOSED CONTOURS (0.5')		
---	-LOC-TP- LIMITS OF CLEARING / TREE PROTECTION		



REACH 5 - PROPOSED BRIDGE DIMENSIONS

REACH NAME	WSSI ID#	RESTON PLAC. #	BANKFULL WIDTH (FT)	EXISTING		PROPOSED	
				LENGTH (FT)	WIDTH (FT)	LENGTH (FT)	WIDTH (FT)
REACH 5	21	N/A	22	24.5	4	40	6
	22	109	N/A	20.5	9.5	NOT TO BE REPLACED	
	23	48	22	20	4	40	6
	24	47	23	18	10	40	10

NOTES:
 1. BOTTOM OF BRIDGE DECK TO BE 2 FT HIGHER THAN BANKFULL DEPTH

GRAPHIC SCALE
 0 15 30 60 120
 (IN FEET) 1 inch = 30 feet

NORTHERN VIRGINIA STREAM RESTORATION BANK
THE GLADE - REACH 5
 Fairfax County, Virginia

PRELIMINARY PLAN

Copyright © 2009 Wetland Studies and Solutions, Inc.

Wetland
 Studies and Solutions, Inc.
 5300 Wellington Branch Drive, Suite 100 • Gainesville, VA 20155
 Phone 703 679 5600 • Fax 703 679 5601
 wetlandstudies.com

H. D.: VCS NAD 83 V. D.: NGVD 29
 Boundary and Topo Source: WSSI and Fairfax Digital Data

REVISIONS							
No.	Date	Description	Rev. By	App. By	No.	Date	Description
1	7/24/2009	Revised limits of clearing and access path	KLS	FRG			
2	7/24/2009	Revised alignment; stream lengths	KLS	FRG			
3	7/24/2009	Fine grading around bridges and walls, and specified batter (as needed); added spot shots	KLS	FRG			
4	7/24/2009	Add trees to be removed (23484)	KLS	FRG			

DATE: JUNE 27, 2009 SCALE: 1" = 30' C.I. = 0.5'

Computer File Name: L:\2009\26073\CADD\4-DRAWING\04-7209-PrePlan.rvt

Design Draft Approved
 KLS KLS FRG

Sheet #
4 of 4