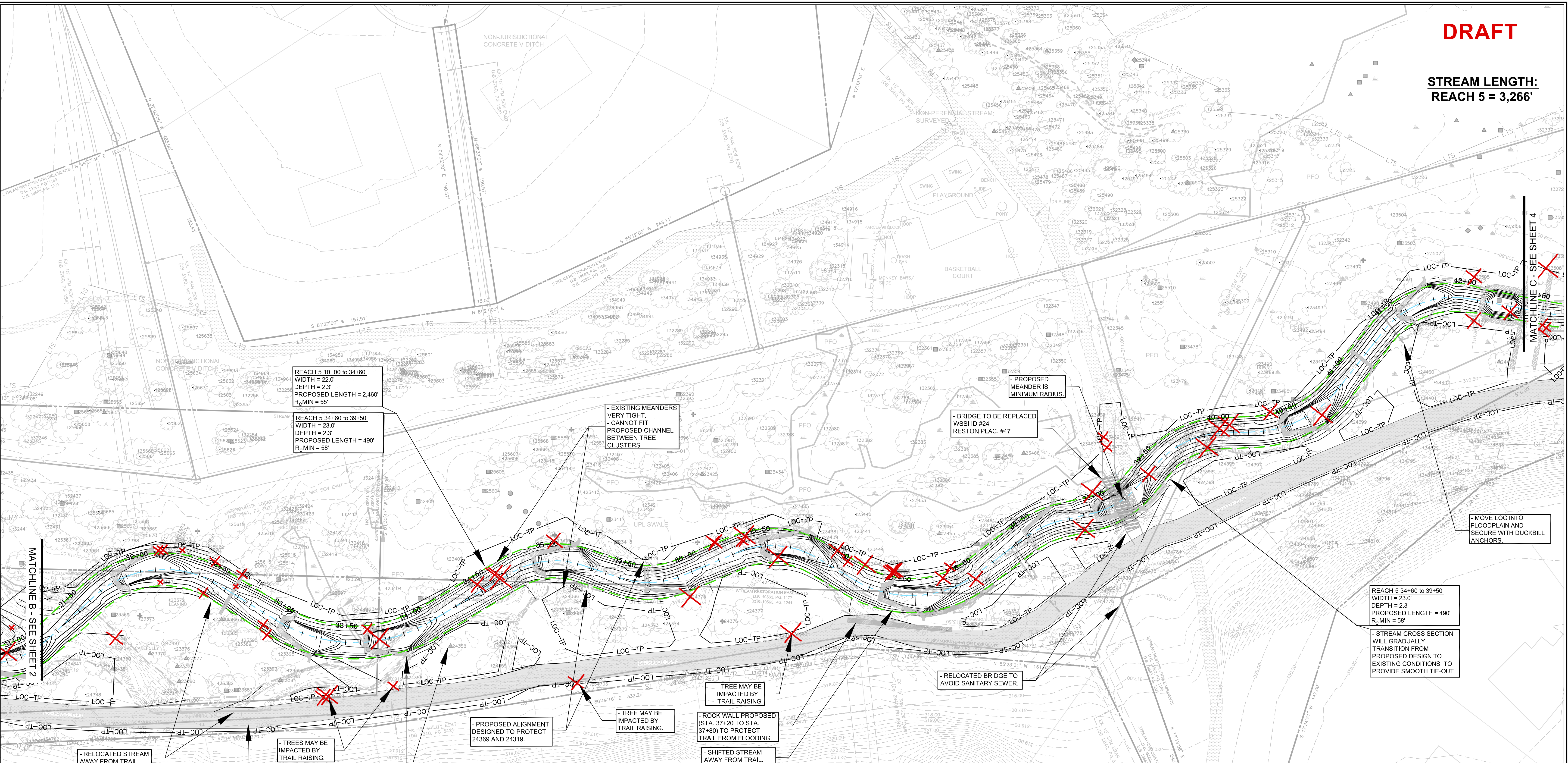


DRAFT

STREAM LENGTH:  
REACH 5 = 3,266'



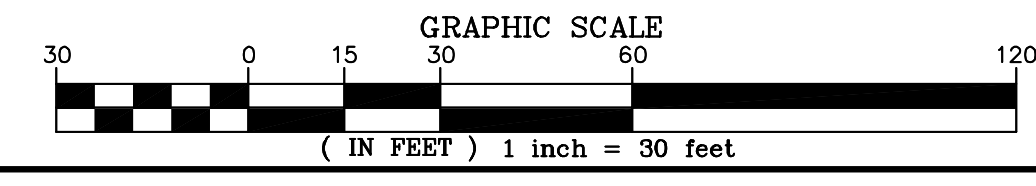
REACH 5 10+60 to 34+60  
WIDTH = 22.0'  
DEPTH = 2.3'  
PROPOSED LENGTH = 2,460'  
R<sub>c</sub> MIN = 55'

REACH 5 34+60 to 39+50  
WIDTH = 23.0'  
DEPTH = 2.3'  
PROPOSED LENGTH = 490'  
R<sub>c</sub> MIN = 58'

REACH 5 34+60 to 39+50  
WIDTH = 23.0'  
DEPTH = 2.3'  
PROPOSED LENGTH = 490'  
R<sub>c</sub> MIN = 58'

**REACH 5 LEGEND**

---	PROPERTY BOUNDARY & STREAM ESMNT, TEMP. GRADING & CONST. ESMNT, & INGRESS-EGRESS ESMNT	▲	NEST
---	STREAM ESMNT, TEMP. GRADING & CONST. ESMNT, & INGRESS-EGRESS ESMNT	■	CAVITY
---	EXISTING CONTOURS (0.5)	○	SUBSURFACE EROSIONAL FEATURE
---	EXISTING INFRASTRUCTURE	◆	SNAG
---	FLOODPLAIN EASEMENT	+	DEN
---	NONPERENNIAL STREAM (EXISTING TOP OF BANK)	—	TREE DRIFLINE
---	PERENNIAL STREAM (EXISTING TOP OF BANK)	—	ACCESS PATH
---	JURISDICTIONAL WETLAND AREAS	✗	TREE TO BE REMOVED
---	LTS - LIMITS OF TREE SURVEY		
---	PROPOSED TOP OF BANK		
---	PROPOSED CENTERLINE		
---	PROPOSED CONTOURS (0.5)		
---	LOC-TP - LIMITS OF CLEARING / TREE PROTECTION		



### NORTHERN VIRGINIA STREAM RESTORATION BANK THE GLADE - REACH 5 Fairfax County, Virginia

#### DRAFT PRELIMINARY PLAN

Copyright © 2009 Wetland Studies and Solutions, Inc.

5300 Wellington Branch Drive, Suite 100 • Gainesville, VA 20155  
Phone 703 679 5600 • Fax 703 679 5601  
wetlandstudies.com

REVISIONS						H. D.: VCS NAD 83 V. D.: NGVD 29	
No.	Date	Description	Rev. By	App. By	No.	Date	Description
							Boundary and Topo Source: WSSI and Fairfax Digital Data
							Design Draft Approved
							KLS KLS FRG
							Sheet #
							3 of 4
							Computer File Name:

DATE: JUNE 27, 2009 SCALE: 1" = 30' C.I. = 0.5'