

REACH 5 LEGEND	
--- PROPERTY BOUNDARY & STREAM ESMT.	▲ NEST
--- TEMP. GRADING & CONST. ESMT. & INGRESS-EGRESS ESMT	■ CAVITY
--- STREAM ESMT. TEMP. GRADING & CONST. ESMT. & INGRESS-EGRESS ESMT	○ SUBSURFACE EROSIONAL FEATURE
--- EXISTING CONTOURS (0.5')	◆ SNAG
--- EXISTING INFRASTRUCTURE	◇ DEN
--- FLOODPLAIN EASEMENT	○ TREE DRIFLINE
--- NONPERENNIAL STREAM (EXISTING TOP OF BANK)	
--- PERENNIAL STREAM (EXISTING TOP OF BANK)	
--- JURISDICTIONAL WETLAND AREAS	
--- LTS --- LIMITS OF TREE SURVEY	

NORTHERN VIRGINIA STREAM RESTORATION BANK
THE GLADE - REACH 5
 Fairfax County, Virginia

EXISTING CONDITIONS

Copyright © 2009 Wetland Studies and Solutions, Inc.

5300 Wellington Branch Drive, Suite 100 • Gainesville, VA 20155
 Phone 703 679 5600 • Fax 703 679 5601
 wetlandstudies.com

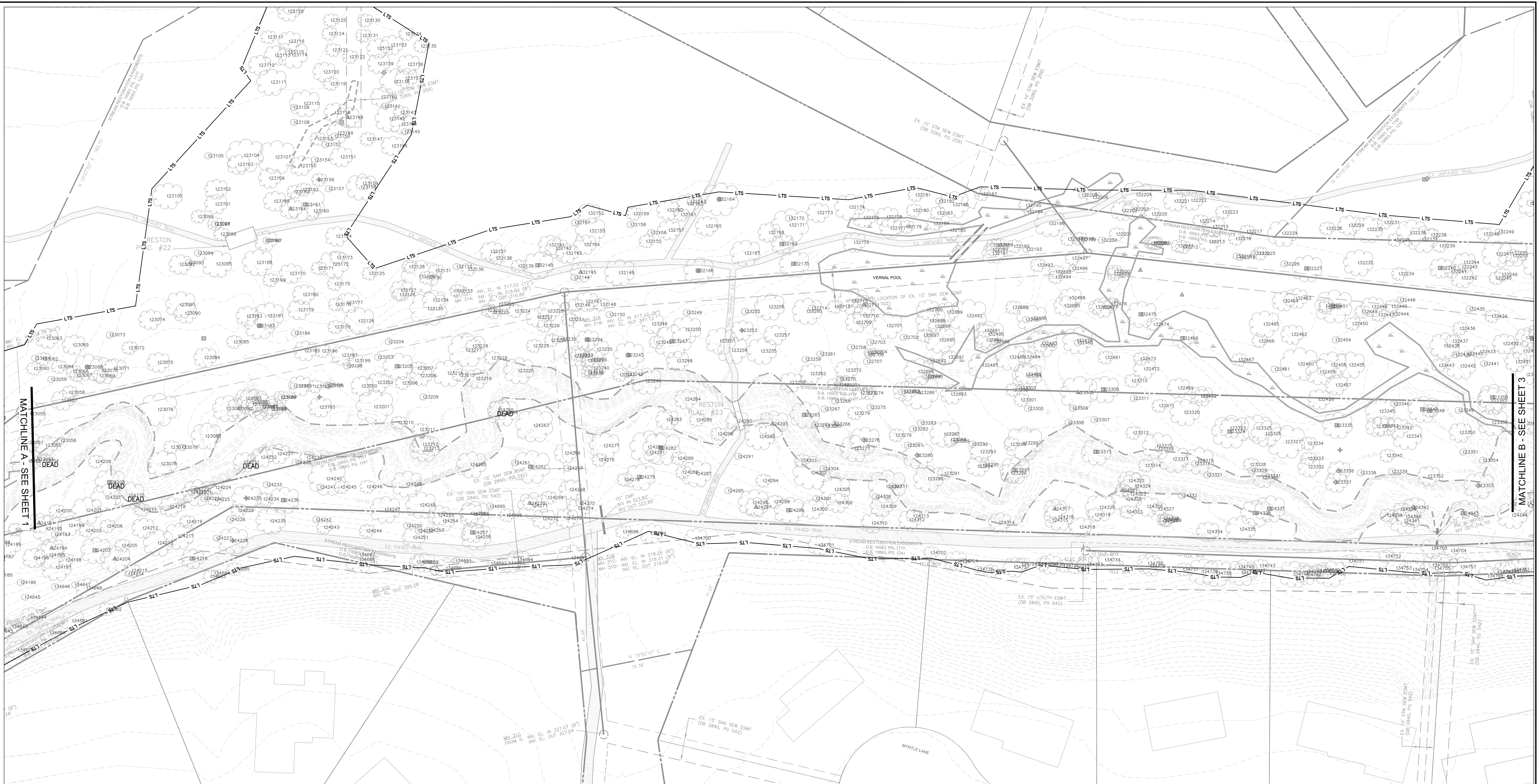
H. D.: VCS NAD 83 V. D.: NGVD 29

REVISIONS					
No.	Date	Description	Rev. By	App. By	

Boundary and Topo Source:		
Design	MFA	Approved
Sheet #		
1 of 4		

DATE: APRIL 17, 2009 SCALE: 1" = 30' C.I. = 0.5'

Computer File Name: L:\00000000\NVA0000000\NVA0000000.DWG



MATCHLINE A - SEE SHEET 1

MATCHLINE B - SEE SHEET 3



REACH 5 LEGEND	
--- PROPERTY BOUNDARY & STREAM ESMNT, TEMP. GRADING & CONST. ESMNT, & INGRESS-EGRESS ESMNT	▲ NEST
--- STREAM ESMNT, TEMP. GRADING & CONST. ESMNT, & INGRESS-EGRESS ESMNT	■ CAVITY
--- EXISTING CONTOURS (0.5)	○ SUBSURFACE EROSIONAL FEATURE
--- EXISTING INFRASTRUCTURE	◇ SNAG
--- FLOODPLAIN EASEMENT	◆ DEN
--- NONPERENNIAL STREAM (EXISTING TOP OF BANK)	○ TREE DRIPLINE
--- PERENNIAL STREAM (EXISTING TOP OF BANK)	
--- JURISDICTIONAL WETLAND AREAS	
--- LTS	
	--- LIMITS OF TREE SURVEY

NORTHERN VIRGINIA STREAM RESTORATION BANK
THE GLADE - REACH 5
 Fairfax County, Virginia

EXISTING CONDITIONS

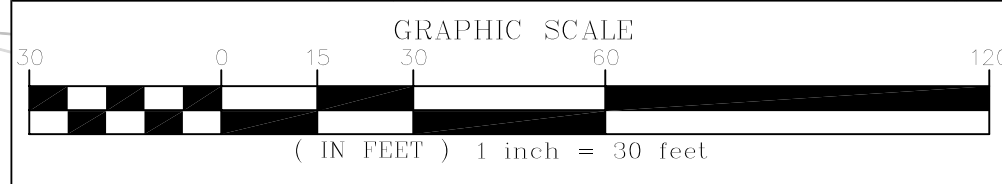
Copyright © 2009 Wetland Studies and Solutions, Inc.

REVISIONS					
No.	Date	Description	Rev. By	App. By	

5300 Wellington Branch Drive, Suite 100 • Gainesville, VA 20155
 Phone 703 679 5600 • Fax 703 679 5601
 wetlandstudies.com

DATE: APRIL 17, 2009 SCALE: 1" = 30' C.I. = 0.5'

H. D.: VCS NAD 83 V. D.: NGVD 29		
Boundary and Top Source: WSSI and Fairfax Digital Data		
Design	Draft	Approved
MFA	MFA	FRG
Sheet #		
2 of 4		
Computer File Name:		



REACH 5 LEGEND

—	PROPERTY BOUNDARY & STREAM ESMT, TEMP. GRADING & CONST. ESMT, & INGRESS-EGRESS ESMT	▲	NEST
---	STREAM ESMT, TEMP. GRADING & CONST. ESMT, & INGRESS-EGRESS ESMT	■	CAVITY
---	EXISTING CONTOURS (0.5')	○	SUBSURFACE EROSIONAL FEATURE
---	EXISTING INFRASTRUCTURE	◆	SNAG
---	FLOODPLAIN EASEMENT	+	DEN
---	NONPERENNIAL STREAM (EXISTING TOP OF BANK)	~	TREE DRIPLINE
---	PERENNIAL STREAM (EXISTING TOP OF BANK)		
---	JURISDICTION WETLAND AREAS		
---	LTS — LIMITS OF TREE SURVEY		

NORTHERN VIRGINIA STREAM RESTORATION BANK
THE GLADE - REACH 5
 Fairfax County, Virginia

EXISTING CONDITIONS

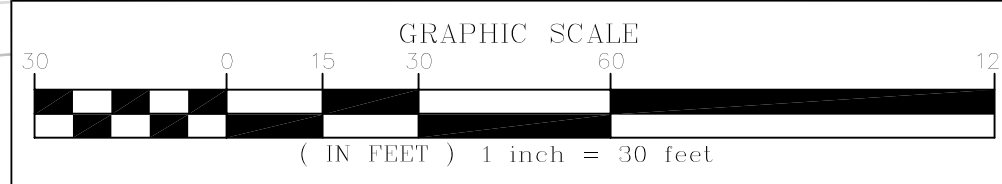
Copyright © 2009 Wetland Studies and Solutions, Inc.

REVISIONS						H. D.: VCS NAD 83 V. D.: NGVD 29			
No.	Date	Description	Rev. By	App. By	No.	Date	Description	Rev. By	App. By

Wetland
 Studies and Solutions, Inc.
 5300 Wellington Branch Drive, Suite 100 • Gainesville, VA 20155
 Phone 703 679 5600 • Fax 703 679 5601
 wetlandstudies.com



MATCHLINE C SEE SHEET 3



REACH 5 LEGEND		
--- PROPERTY BOUNDARY & STREAM ESMNT, TEMP. GRADING & CONST. ESMNT, & INGRESS-EGRESS ESMNT	▲ NEST	
--- STREAM ESMNT, TEMP. GRADING & CONST. ESMNT, & INGRESS-EGRESS ESMNT	■ CAVITY	
- - - EXISTING CONTOURS (0.5')	○ EROSIONAL FEATURE	
--- EXISTING INFRASTRUCTURE	◇ SNAG	
--- FLOODPLAIN EASEMENT	✦ DEN	
- - - NONPERENNIAL STREAM (EXISTING TOP OF BANK)	○ TREE	
--- PERENNIAL STREAM (EXISTING TOP OF BANK)	○ DRIPLINE	
--- JURISDICTIONAL WETLAND AREAS		
--- LTS - LIMITS OF TREE SURVEY		



NORTHERN VIRGINIA STREAM RESTORATION BANK
THE GLADE - REACH 5
 Fairfax County, Virginia

EXISTING CONDITIONS

Copyright © 2009 Wetland Studies and Solutions, Inc.

REVISIONS						H. D.: VCS NAD 83 V. D.: NGVD 29			
No.	Date	Description	Rev. By	App. By	No.	Date	Description	Rev. By	App. By

Wetland
 Studies and Solutions, Inc.
 5300 Wellington Branch Drive, Suite 100 • Gainesville, VA 20155
 Phone 703 679 5600 • Fax 703 679 5601
 wetlandstudies.com