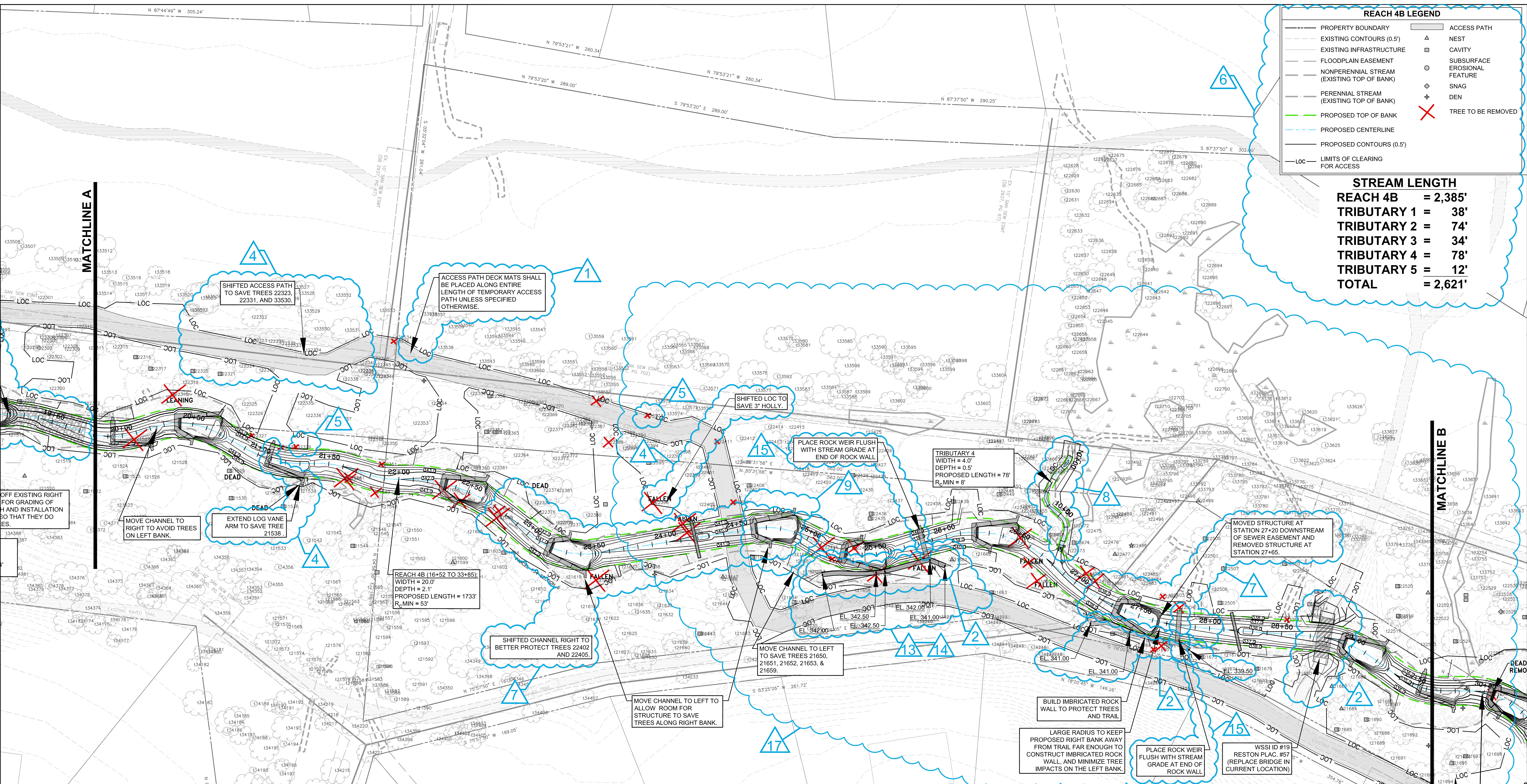


REACH 4B LEGEND

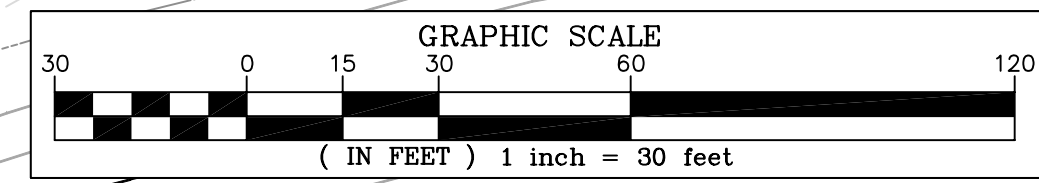
- PROPERTY BOUNDARY
- EXISTING INFRASTRUCTURE
- FLOODPLAIN EASEMENT
- NONPERENNIAL STREAM (EXISTING TOP OF BANK)
- PERENNIAL STREAM (EXISTING TOP OF BANK)
- PROPOSED TOP OF BANK
- PROPOSED CENTERLINE
- PROPOSED CONTOURS (0.5')
- LIMITS OF CLEARING FOR ACCESS
- ACCESS PATH
- NEST
- CAVITY
- SUBSURFACE EROSIONAL FEATURE
- SNAG
- DEN
- TREE TO BE REMOVED

STREAM LENGTH

REACH 4B = 2,385'
 TRIBUTARY 1 = 38'
 TRIBUTARY 2 = 74'
 TRIBUTARY 3 = 34'
 TRIBUTARY 4 = 78'
 TRIBUTARY 5 = 12'
TOTAL = 2,621'



1
 REVISED ALL LIMITS OF CLEARING AND TEMPORARY ACCESS PATH TO STANDARDIZED WIDTH, PROVIDE STORAGE, AND INCLUDE STREAM.



NORTHERN VIRGINIA STREAM RESTORATION BANK

THE GLADE - REACH 4B

Fairfax County, Virginia

Preliminary Plan

Copyright © 2009 Wetland Studies and Solutions, Inc.

Wetland
 Studies and Solutions, Inc.
 5300 Wellington Branch Drive, Suite 100 • Gainesville, VA 20155
 Phone 703 679 5600 • Fax 703 679 5601
 wetlandstudies.com

REVISIONS					
No.	Date	Description	Rev. By	App. By	
1	3/23/2009	Revised Limits of Clearing and Access Path	SRP	FRG	8
2	3/23/2009	Fine grading around bridges and walls	SRP	FRG	9
4	3/23/2009	Added trees to be saved (14 Total)	SRP	FRG	13
5	3/23/2009	Added trees to be removed (5 Total)	SRP	FRG	14
6	3/23/2009	Revised legend and stream lengths	SRP	FRG	15
7	3/23/2009	Revised alignment	SRP	FRG	16
					17
					18
					19
					20
					21
					22
					23
					24
					25
					26
					27
					28
					29
					30
					31
					32
					33
					34
					35
					36
					37
					38
					39
					40
					41
					42
					43
					44
					45
					46
					47
					48
					49
					50
					51
					52
					53
					54
					55
					56
					57
					58
					59
					60
					61
					62
					63
					64
					65
					66
					67
					68
					69
					70
					71
					72
					73
					74
					75
					76
					77
					78
					79
					80
					81
					82
					83
					84
					85
					86
					87
					88
					89
					90
					91
					92
					93
					94
					95
					96
					97
					98
					99
					100

DATE: MARCH 7, 2009

SCALE: 1" = 30'

Computer File Name:

© 2009 Wetland Studies and Solutions, Inc.