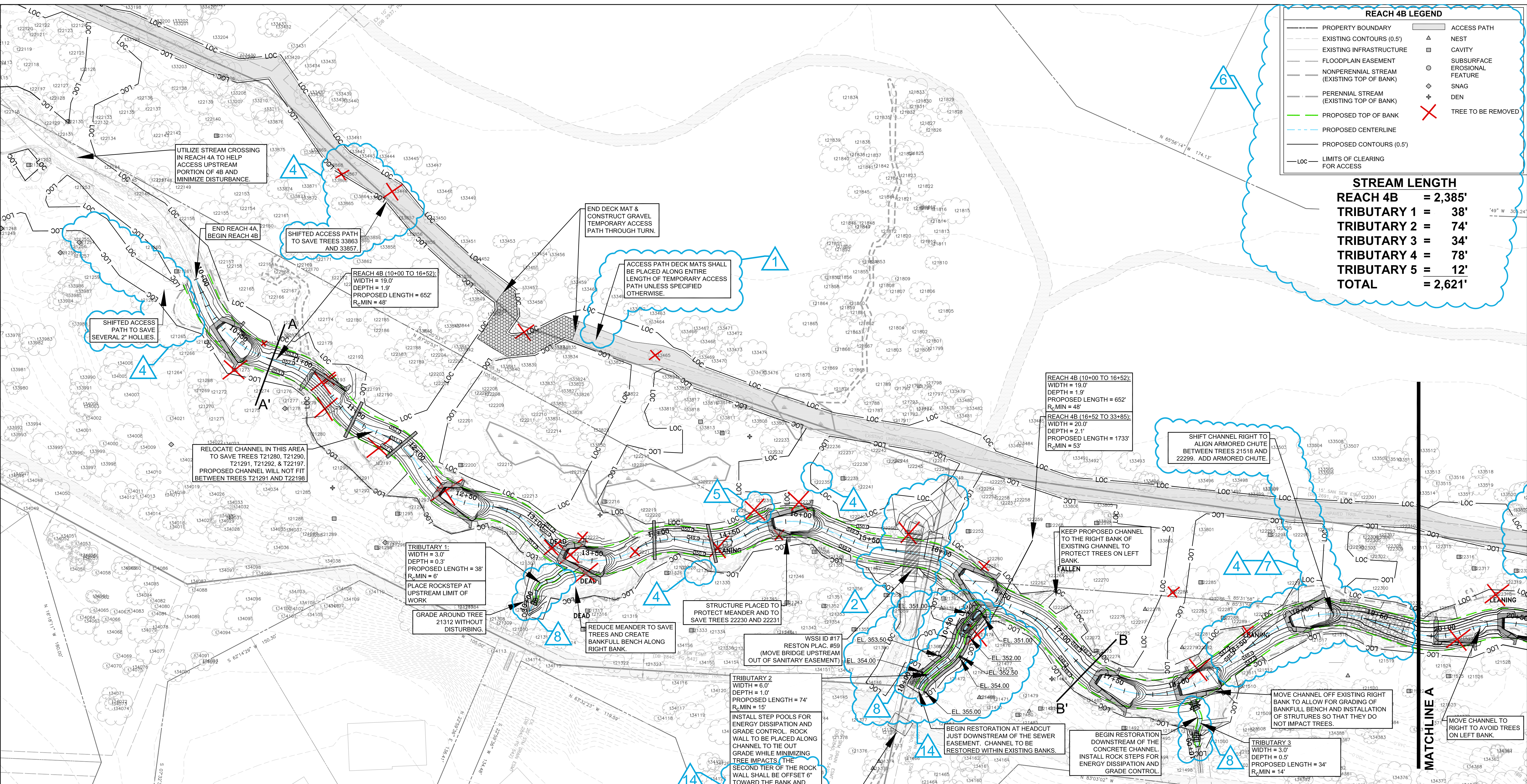


REACH 4B LEGEND

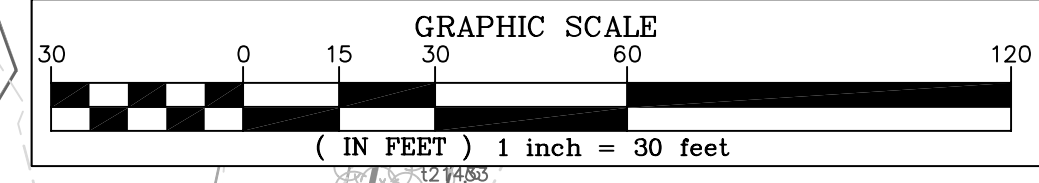
- PROPERTY BOUNDARY
- EXISTING CONTOURS (0.5')
- EXISTING INFRASTRUCTURE
- FLOODPLAIN EASEMENT
- NONPERENNIAL STREAM (EXISTING TOP OF BANK)
- PERENNIAL STREAM (EXISTING TOP OF BANK)
- PROPOSED TOP OF BANK
- PROPOSED CENTERLINE
- PROPOSED CONTOURS (0.5')
- LOC - LIMITS OF CLEARING FOR ACCESS
- ACCESS PATH
- NEST
- CAVITY
- SUBSURFACE EROSIONAL FEATURE
- SNAG
- DN
- TREE TO BE REMOVED

STREAM LENGTH

REACH 4B	= 2,385'
TRIBUTARY 1	= 38'
TRIBUTARY 2	= 74'
TRIBUTARY 3	= 34'
TRIBUTARY 4	= 78'
TRIBUTARY 5	= 12'
TOTAL	= 2,621'



1
REVISED ALL LIMITS OF CLEARING AND TEMPORARY ACCESS PATH TO STANDARDIZED WIDTH, PROVIDE STORAGE, AND INCLUDE STREAM.



NORTHERN VIRGINIA STREAM RESTORATION BANK
THE GLADE - REACH 4B
 Fairfax County, Virginia
 Preliminary Plan

Wetland
 Studies and Solutions, Inc.
 5300 Wellington Branch Drive, Suite 100 • Gainesville, VA 20155
 Phone 703 679 5600 • Fax 703 679 5601
 wetlandstudies.com

Copyright © 2009 Wetland Studies and Solutions, Inc.

REVISIONS									
No.	Date	Description	Rev. By	App. By	No.	Date	Description	Rev. By	App. By
1	3/23/2009	Revised Limits of Clearing and Access Path	SRP	FRG	8	3/23/2009	Added tributary grading	SRP	FRG
2	3/23/2009	Fine grading around bridges and walls	SRP	FRG	14	3/31/2009	Specified batter (as needed); added spot shots	SRP	FRG
4	3/23/2009	Added trees to be saved (14 Total)	SRP	FRG					
5	3/23/2009	Added trees to be removed (5 Total)	SRP	FRG					
6	3/23/2009	Revised legend and stream lengths	SRP	FRG					
7	3/23/2009	Revised alignment	SRP	FRG					

H. D.: VCS NAD 83 V. D.: NGVD 29
 Boundary and Topo Source: WSSI and Fairfax Digital Data
 Design Draft Approved
 SRP SRP FRG
 Sheet #
 1 of 3
 Computer File Name: 1-StreamRestoration-0609

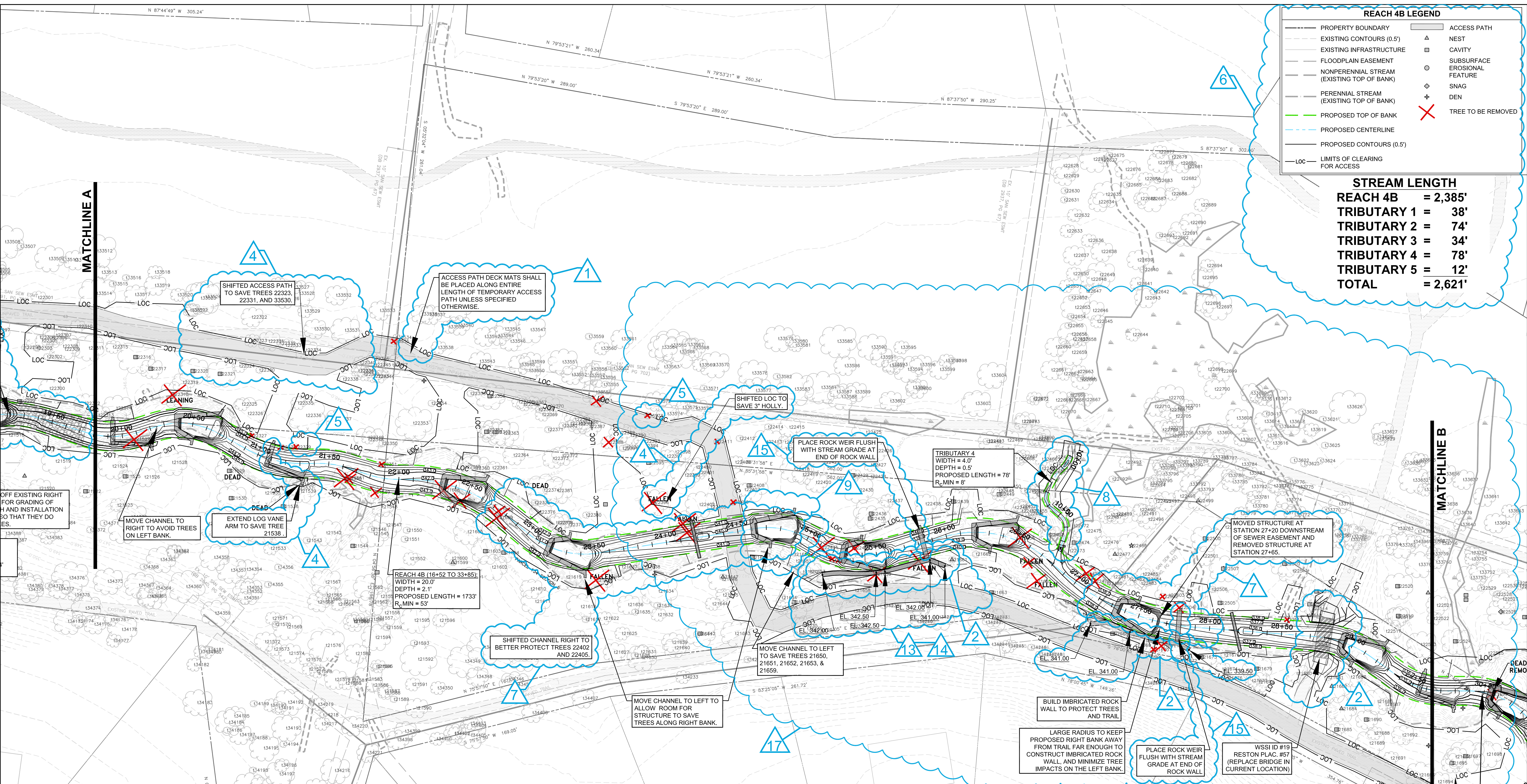
DATE: MARCH 7, 2009 SCALE: 1" = 30'

REACH 4B LEGEND

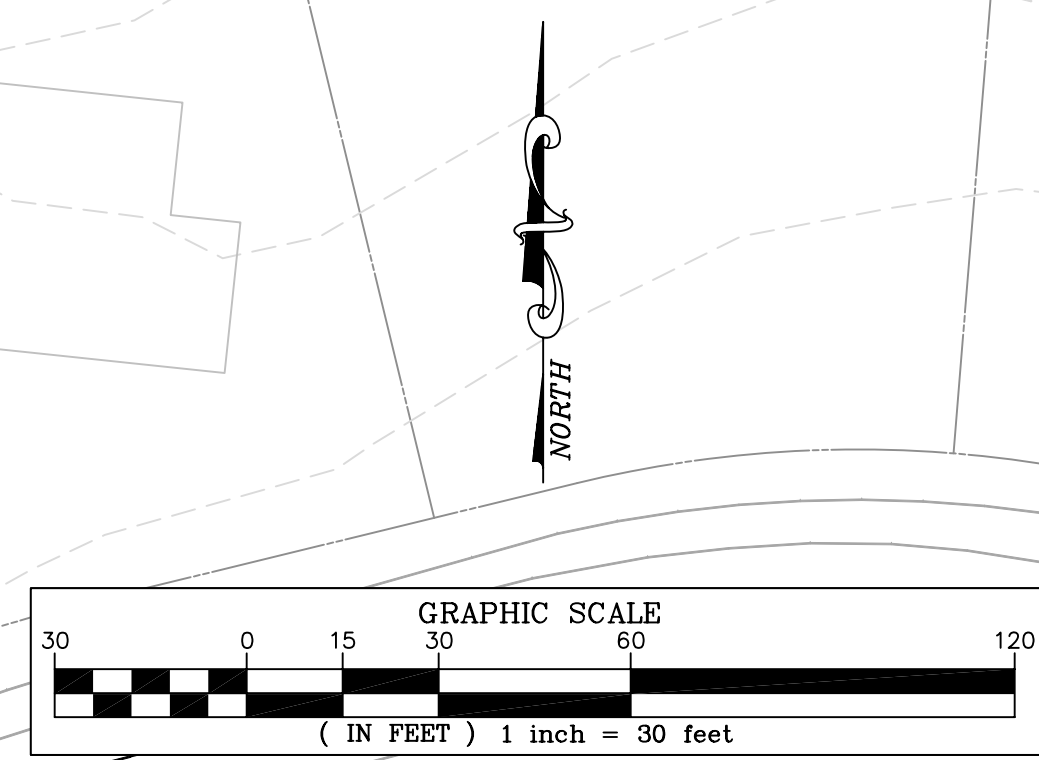
- PROPERTY BOUNDARY
- EXISTING INFRASTRUCTURE
- FLOODPLAIN EASEMENT
- NONPERENNIAL STREAM (EXISTING TOP OF BANK)
- PERENNIAL STREAM (EXISTING TOP OF BANK)
- PROPOSED TOP OF BANK
- PROPOSED CENTERLINE
- PROPOSED CONTOURS (0.5')
- LOC LIMITS OF CLEARING FOR ACCESS
- △ NEST
- CAVITY
- SUBSURFACE EROSIONAL FEATURE
- ◇ SNAG
- ⊕ DEN
- ✗ TREE TO BE REMOVED

STREAM LENGTH

REACH 4B	= 2,385'
TRIBUTARY 1	= 38'
TRIBUTARY 2	= 74'
TRIBUTARY 3	= 34'
TRIBUTARY 4	= 78'
TRIBUTARY 5	= 12'
TOTAL	= 2,621'



1
REVISED ALL LIMITS OF CLEARING AND TEMPORARY ACCESS PATH TO STANDARDIZED WIDTH, PROVIDE STORAGE, AND INCLUDE STREAM.



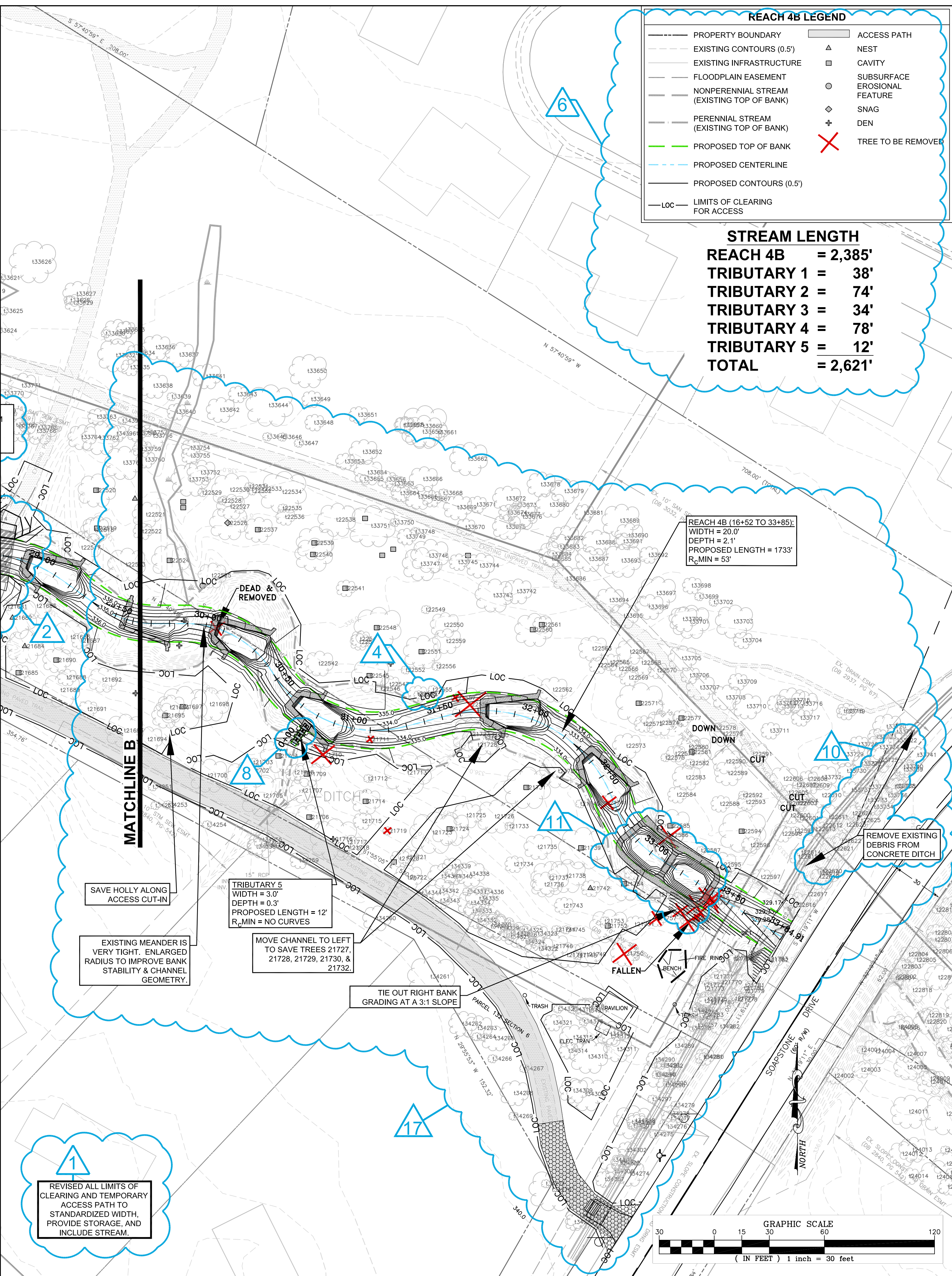
NORTHERN VIRGINIA STREAM RESTORATION BANK
THE GLADE - REACH 4B
 Fairfax County, Virginia
 Preliminary Plan
 Copyright © 2009 Wetland Studies and Solutions, Inc.

Wetland
 Studies and Solutions, Inc.
 5300 Wellington Branch Drive, Suite 100 • Gainesville, VA 20155
 Phone 703 679 5600 • Fax 703 679 5601
 wetlandstudies.com

REVISIONS				REVISIONS					
No.	Date	Description	Rev. By	App. By	No.	Date	Description	Rev. By	App. By
1	3/23/2009	Revised Limits of Clearing and Access Path	SRP	FRG	8	3/23/2009	Added tributary grading	SRP	FRG
2	3/23/2009	Fine grading around bridges and walls	SRP	FRG	9	3/23/2009	Shifted structure upstream to Station 24+63	SRP	FRG
4	3/23/2009	Added trees to be saved (14 Total)	SRP	FRG	13	3/31/2009	Revised grading to improve drainage	SRP	FRG
5	3/23/2009	Added trees to be removed (5 Total)	SRP	FRG	14	3/31/2009	Specified batter (as needed); added spot shots	SRP	FRG
6	3/23/2009	Revised legend and stream lengths	SRP	FRG	15	3/31/2009	Added rock weir to prevent scour	SRP	FRG
7	3/23/2009	Revised alignment	SRP	FRG	16	3/31/2009	Place double deck mats through wetland area	SRP	FRG
					17	4/06/2009	Move access to paved trail (Sta. 24+40 to 33+85)	SRP	FRG

DATE: MARCH 7, 2009 SCALE: 1" = 30'

H. D.: VCS NAD 83 V. D.: NGVD 29
 Boundary and Topo Source: WSSI and Fairfax Digital Data
 Design Draft Approved
 SRP SRP FRG
 Sheet #
 2 of 3
 Computer File Name: I:\2009\03\23\09\032309-04.RVT



REACH 4B LEGEND

---	PROPERTY BOUNDARY	△	ACCESS PATH
---	EXISTING CONTOURS (0.5')	□	NEST
---	EXISTING INFRASTRUCTURE	○	CAVITY
---	FLOODPLAIN EASEMENT	○	SUBSURFACE EROSIONAL FEATURE
---	NONPERENNIAL STREAM (EXISTING TOP OF BANK)	◇	SNAG
---	PERENNIAL STREAM (EXISTING TOP OF BANK)	+	DEN
---	PROPOSED TOP OF BANK	✗	TREE TO BE REMOVED
---	PROPOSED CENTERLINE		
---	PROPOSED CONTOURS (0.5')		
---	LIMITS OF CLEARING FOR ACCESS		

STREAM LENGTH

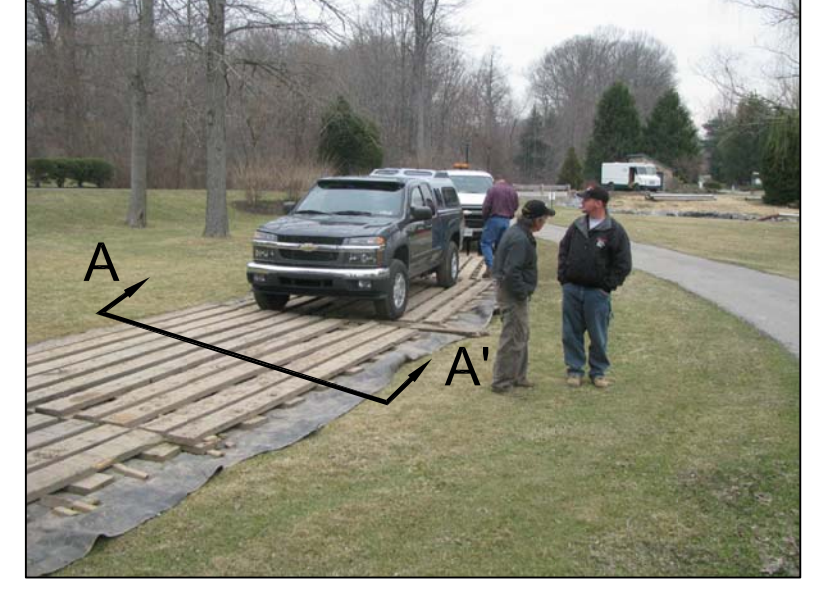
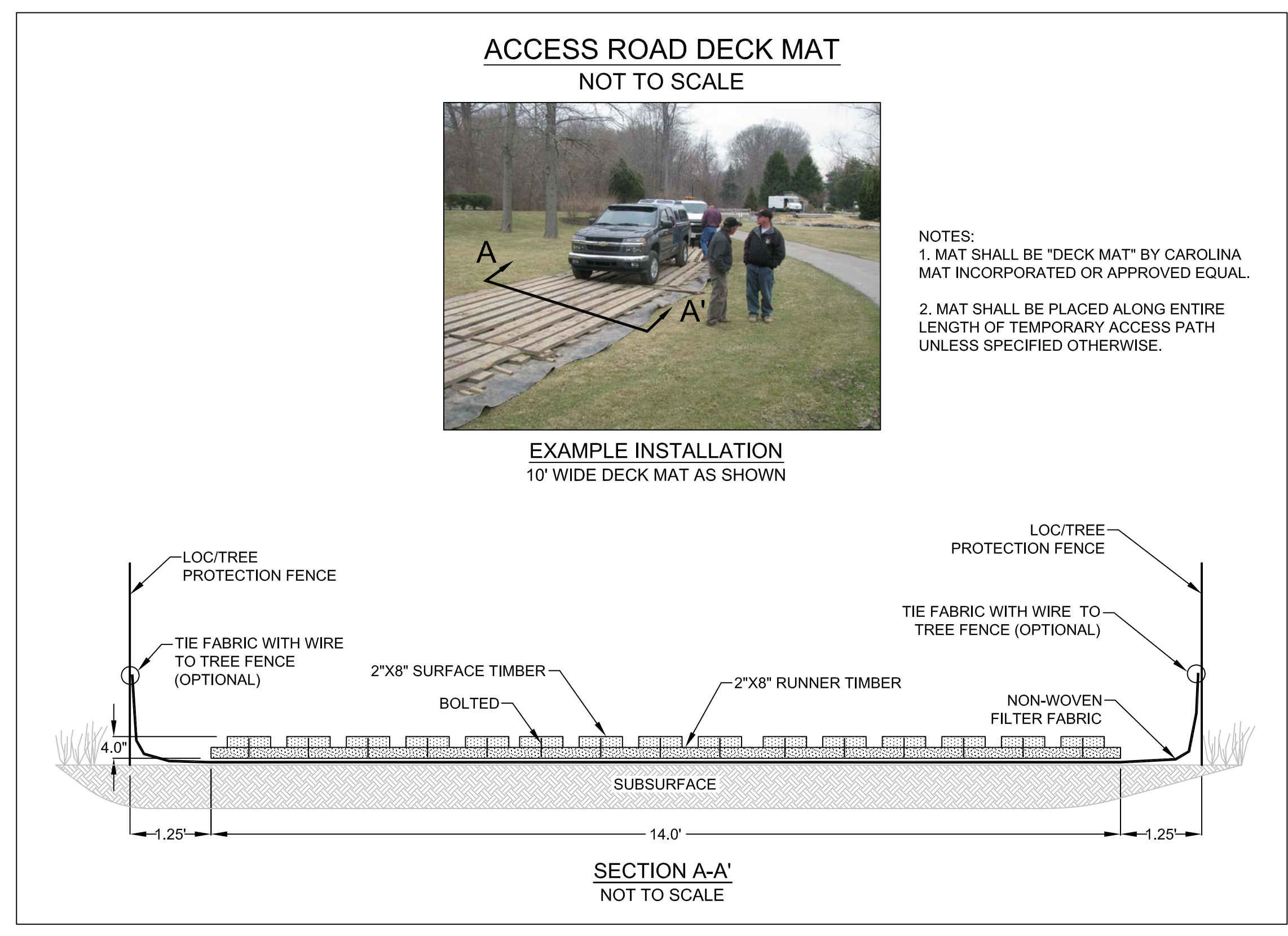
REACH 4B	= 2,385'
TRIBUTARY 1	= 38'
TRIBUTARY 2	= 74'
TRIBUTARY 3	= 34'
TRIBUTARY 4	= 78'
TRIBUTARY 5	= 12'
TOTAL	= 2,621'

REACH 4B (16+52 TO 33+85):
 WIDTH = 20.0'
 DEPTH = 2.1'
 PROPOSED LENGTH = 1733'
 R_{MIN} = 53'

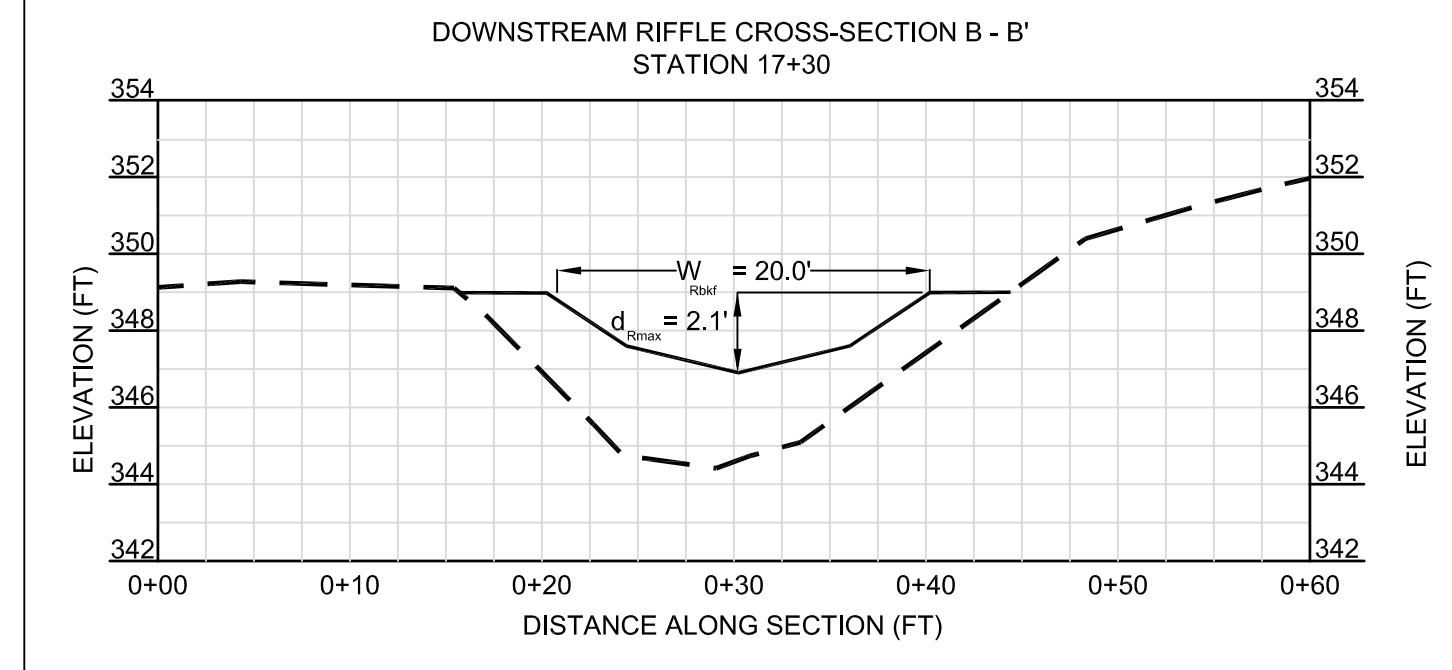
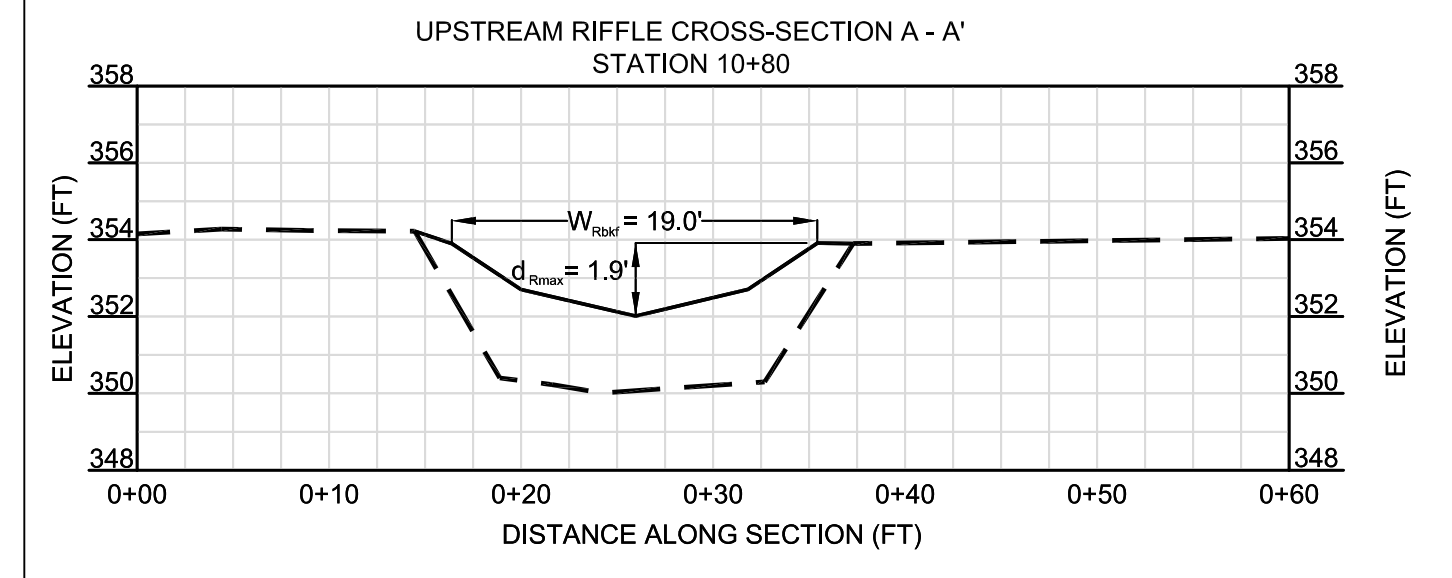
REACH 4 - PROPOSED BRIDGE DIMENSIONS

REACH NAME	WSSI ID#	RESTON PLAC. #	BANKFULL WIDTH (FT)	EXISTING		PROPOSED	
				LENGTH (FT)	WIDTH (FT)	LENGTH (FT)	WIDTH (FT)
REACH 4A	14	12	16	21	4	NOT TO BE REPLACED	
	15	63	16.5	20	10	26	10
	16	62	18	18	10	28	10
	28	N/A (NEW)	11.5	N/A	N/A	22	10
REACH 4B	17	59	19	19.5	10	28	10
	18	60	6	14	10	NOT TO BE REPLACED	
	19	57	20	18	10	28	10

NOTES:
 1. BOTTOM OF BRIDGE DECK TO BE 2 FT HIGHER THAN BANKFULL DEPTH



NOTES:
 1. MAT SHALL BE "DECK MAT" BY CAROLINA MAT INCORPORATED OR APPROVED EQUAL.
 2. MAT SHALL BE PLACED ALONG ENTIRE LENGTH OF TEMPORARY ACCESS PATH UNLESS SPECIFIED OTHERWISE.



CROSS SECTION LEGEND
 PROPOSED STREAM
 EXISTING STREAM

SCALE:
 H/V: 2:1

NORTHERN VIRGINIA STREAM RESTORATION BANK
THE GLADE - REACH 4B
 Fairfax County, Virginia

Preliminary Plan

Copyright © 2009 Wetland Studies and Solutions, Inc.

Wetland
 Studies and Solutions, Inc.®

5300 Wellington Branch Drive, Suite 100 • Gainesville, VA 20155
 Phone 703 679 5600 • Fax 703 679 5601
 wetlandstudies.com

REVISIONS

No.	Date	Description	Rev. By	App. By	No.	Date	Description	Rev. By	App. By
1	3/23/2009	Revised Limits of Clearing and Access Path	SRP	FRG	6	3/23/2009	Revised legend and stream lengths	SRP	FRG
2	3/23/2009	Fine grading around bridges and walls	SRP	FRG	8	3/23/2009	Added tributary grading	SRP	FRG
3	3/23/2009	Revised bridge table	SRP	FRG	10	3/23/2009	Clear debris from concrete ditch	SRP	FRG
4	3/23/2009	Added trees to be saved (14 Total)	SRP	FRG	11	3/23/2009	Decreased stepool depth	SRP	FRG
5	3/23/2009	Added trees to be removed (5 Total)	SRP	FRG	12	3/31/2009	Added missing revision cloud	SRP	FRG
6	3/23/2009	Revised legend and stream lengths	SRP	FRG	16	3/31/2009	Place double deck mats through wetland area	SRP	FRG

DATE: MARCH 7, 2009 SCALE: 1" = 30'

H. D.: VCS NAD 83 V. D.: NGVD 29

Boundary and Topo Source:
 WSSI and Fairfax Digital Data

Design	Draft	Approved
SRP	SRP	FRG

Sheet #
3 of 3

Computer File Name:
 I:\2009\03\07\030701.dwg

