

NORTHERN VIRGINIA STREAM RESTORATION BANK
THE GLADE - REACH 4B
 Fairfax County, Virginia

Wetland
 Studies and Solutions, Inc.
 5300 Wellington Branch Drive, Suite 100 • Gainesville, VA 20155
 Phone 703 679 5600 • Fax 703 679 5601
 wetlandstudies.com

Preliminary Plan

Copyright © 2009 Wetland Studies and Solutions, Inc.

REVISIONS				REVISIONS					
No.	Date	Description	Rev. By	App. By	No.	Date	Description	Rev. By	App. By
1	3/23/2009	Revised Limits of Clearing and Access Path	SRP	FRG	8	3/23/2009	Added tributary grading	SRP	FRG
2	3/23/2009	Fine grading around bridges and walls	SRP	FRG	14	3/31/2009	Specified batter (as needed); added spot shots	SRP	FRG
4	3/23/2009	Added trees to be saved (14 Total)	SRP	FRG					
5	3/23/2009	Added trees to be removed (5 Total)	SRP	FRG					
6	3/23/2009	Revised legend and stream lengths	SRP	FRG					
7	3/23/2009	Revised alignment	SRP	FRG					

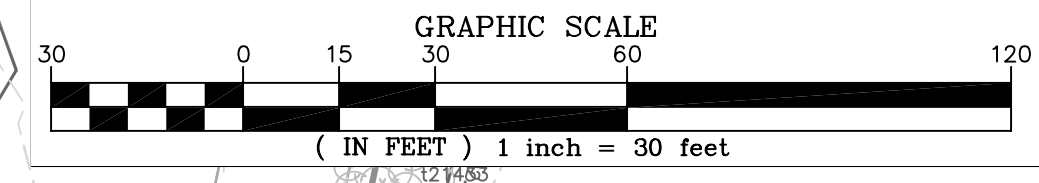
DATE: MARCH 7, 2009 SCALE: 1" = 30'

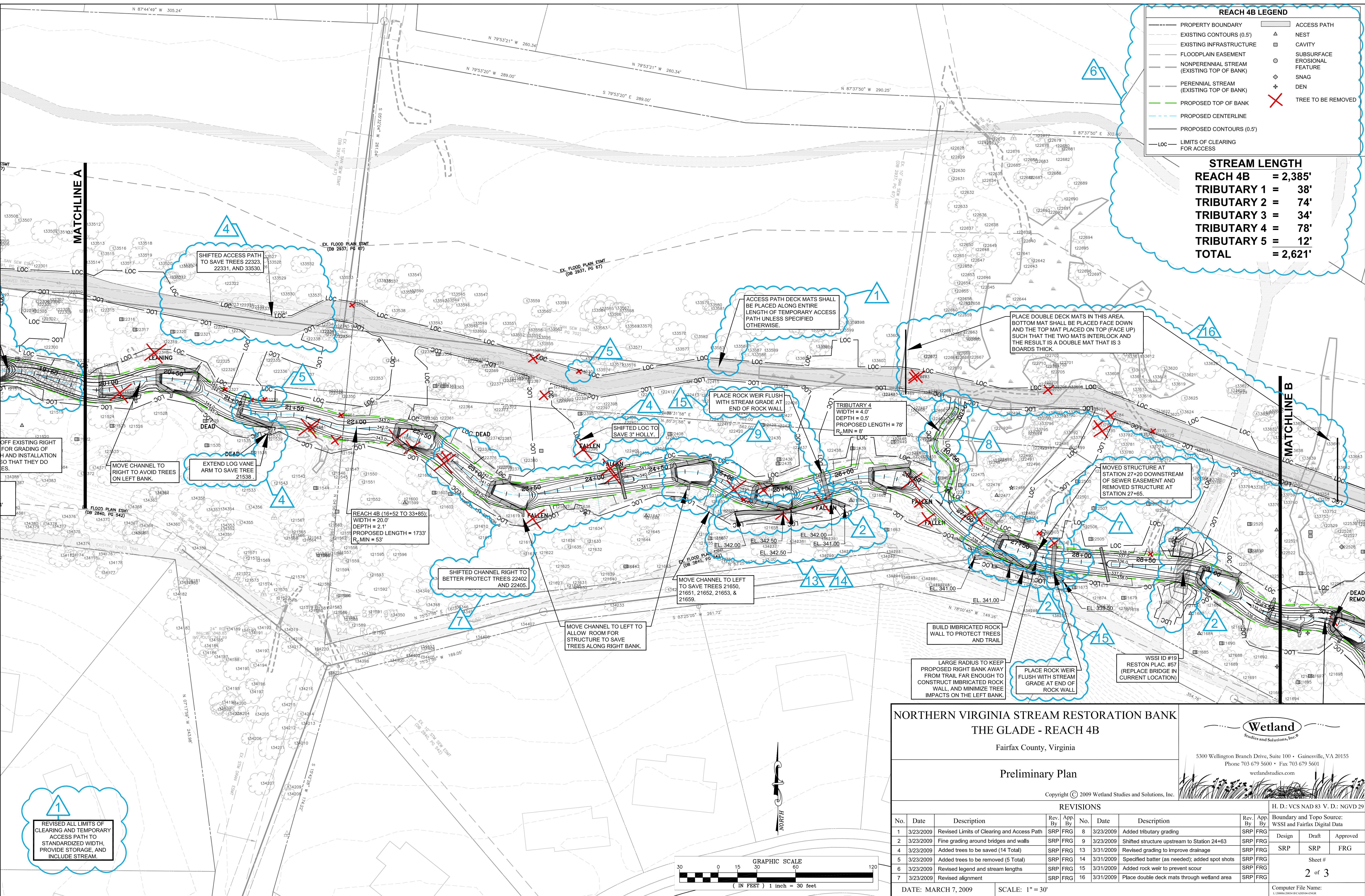
H. D.: VCS NAD 83 V. D.: NGVD 29
 Boundary and Topo Source: WSSI and Fairfax Digital Data

Design	Draft	Approved
SRP	SRP	FRG

Sheet # 1 of 3

Computer File Name: 1-StreamRestoration-DC-090420





REACH 4B LEGEND

- PROPERTY BOUNDARY
- EXISTING CONTOURS (0.5')
- FLOODPLAIN EASEMENT
- NONPERENNIAL STREAM (EXISTING TOP OF BANK)
- PERENNIAL STREAM (EXISTING TOP OF BANK)
- PROPOSED TOP OF BANK
- PROPOSED CENTERLINE
- PROPOSED CONTOURS (0.5')
- LOC LIMITS OF CLEARING FOR ACCESS
- △ NEST
- CAVITY
- SUBSURFACE EROSIONAL FEATURE
- ◇ SNAG
- ⊕ DEN
- ✗ TREE TO BE REMOVED

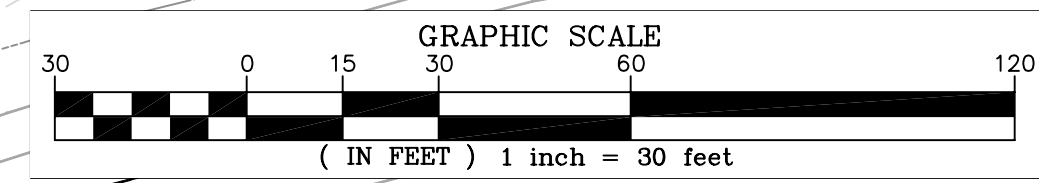
STREAM LENGTH

REACH 4B	= 2,385'
TRIBUTARY 1	= 38'
TRIBUTARY 2	= 74'
TRIBUTARY 3	= 34'
TRIBUTARY 4	= 78'
TRIBUTARY 5	= 12'
TOTAL	= 2,621'

MATCHLINE A

MATCHLINE B

1
REVISED ALL LIMITS OF CLEARING AND TEMPORARY ACCESS PATH TO STANDARDIZED WIDTH, PROVIDE STORAGE, AND INCLUDE STREAM.



NORTHERN VIRGINIA STREAM RESTORATION BANK
THE GLADE - REACH 4B

Fairfax County, Virginia

Preliminary Plan

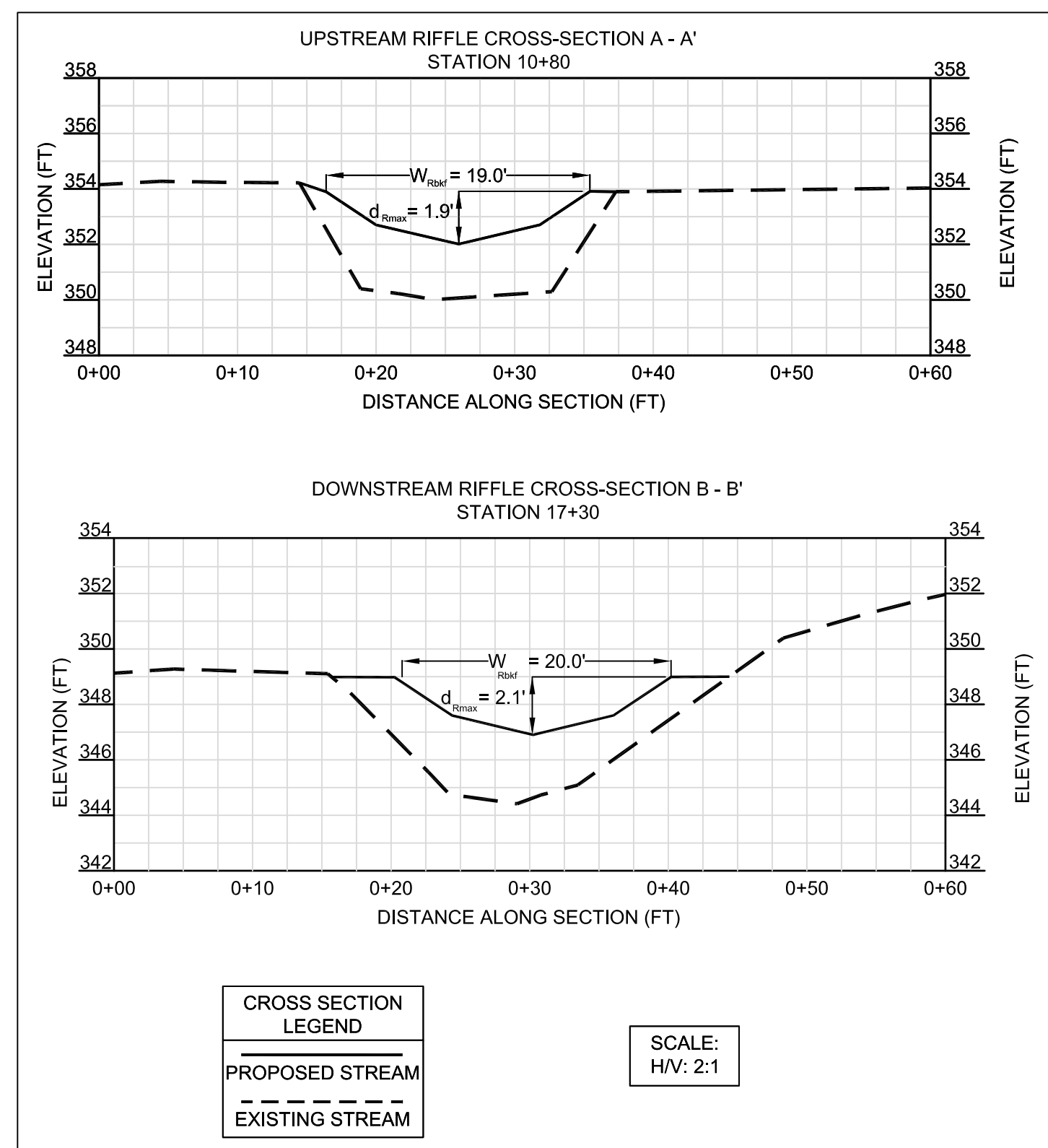
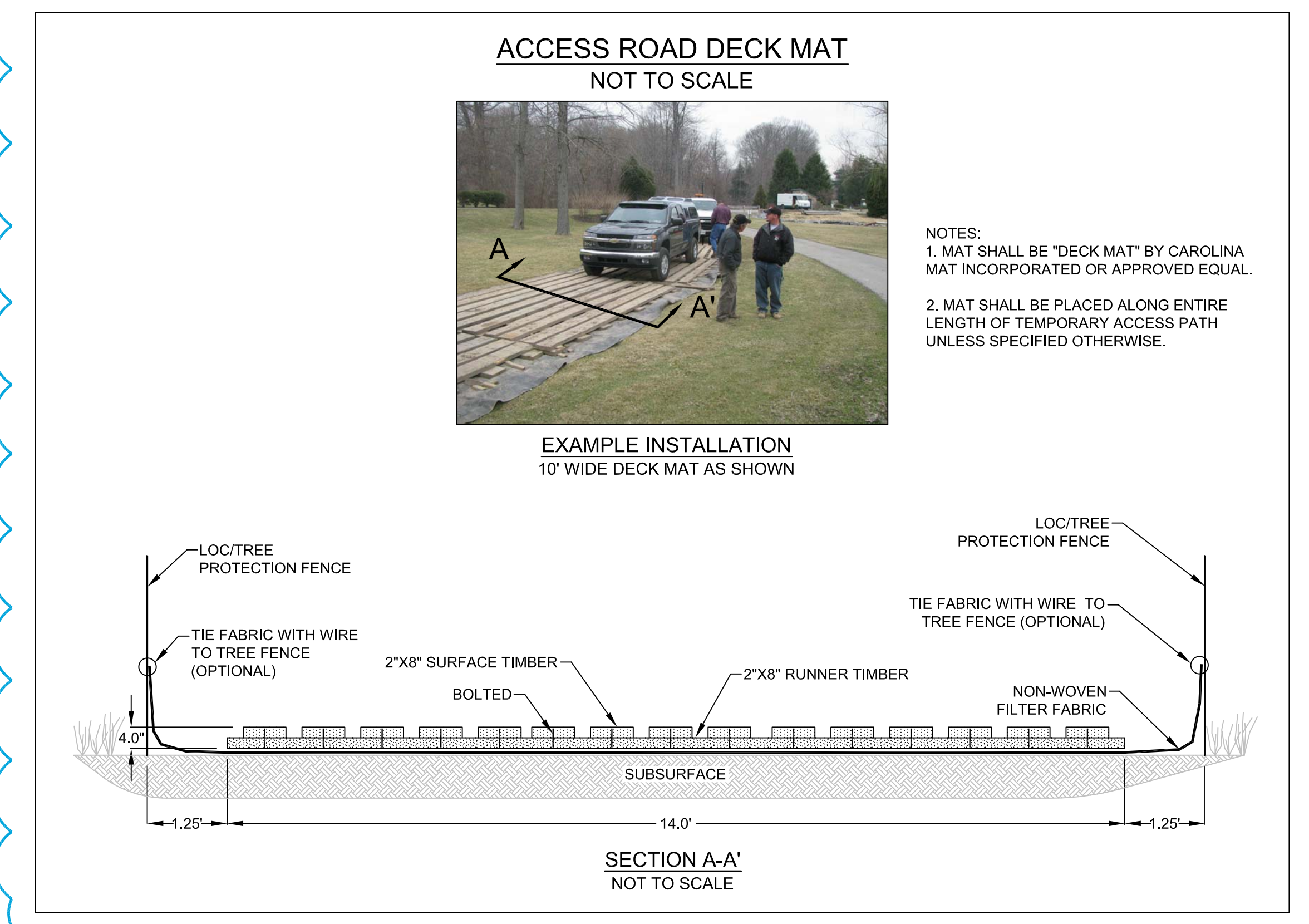
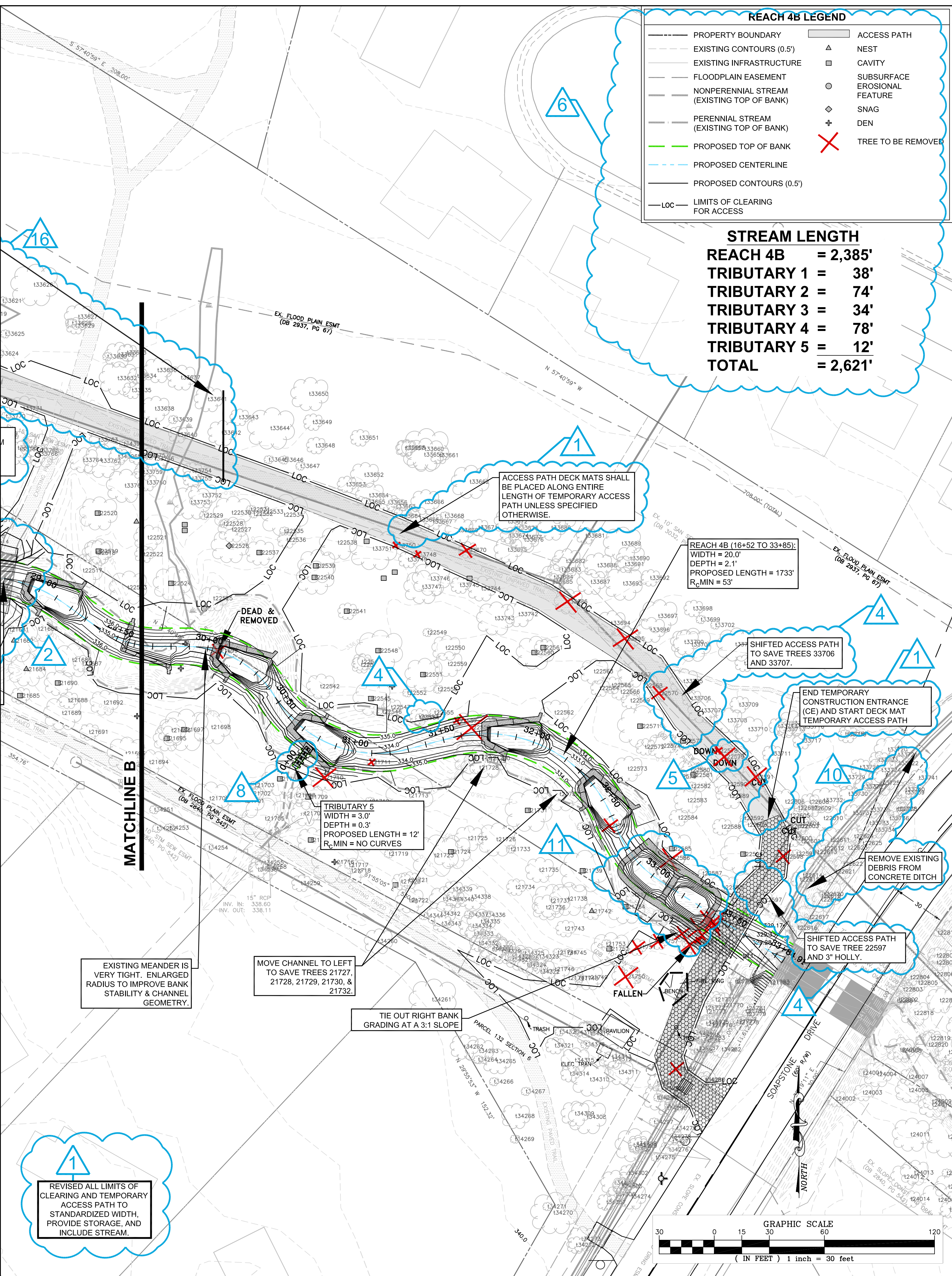
Copyright © 2009 Wetland Studies and Solutions, Inc.

Wetland
 Studies and Solutions, Inc.
 5300 Wellington Branch Drive, Suite 100 • Gainesville, VA 20155
 Phone 703 679 5600 • Fax 703 679 5601
 wetlandstudies.com

REVISIONS									
No.	Date	Description	Rev. By	App. By	No.	Date	Description	Rev. By	App. By
1	3/23/2009	Revised Limits of Clearing and Access Path	SRP	FRG	8	3/23/2009	Added tributary grading	SRP	FRG
2	3/23/2009	Fine grading around bridges and walls	SRP	FRG	9	3/23/2009	Shifted structure upstream to Station 24+63	SRP	FRG
4	3/23/2009	Added trees to be saved (14 Total)	SRP	FRG	13	3/31/2009	Revised grading to improve drainage	SRP	FRG
5	3/23/2009	Added trees to be removed (5 Total)	SRP	FRG	14	3/31/2009	Specified batter (as needed); added spot shots	SRP	FRG
6	3/23/2009	Revised legend and stream lengths	SRP	FRG	15	3/31/2009	Added rock weir to prevent scour	SRP	FRG
7	3/23/2009	Revised alignment	SRP	FRG	16	3/31/2009	Place double deck mats through wetland area	SRP	FRG

DATE: MARCH 7, 2009 SCALE: 1" = 30'

H. D.: VCS NAD 83 V. D.: NGVD 29
 Boundary and Topo Source: WSSI and Fairfax Digital Data
 Design Draft Approved
 SRP SRP FRG
 Sheet #
 2 of 3
 Computer File Name:
 I:\5000\2009\03\2009-03-07-040



NORTHERN VIRGINIA STREAM RESTORATION BANK
THE GLADE - REACH 4B
 Fairfax County, Virginia

Preliminary Plan

Copyright © 2009 Wetland Studies and Solutions, Inc.

Wetland Studies and Solutions, Inc.
 5300 Wellington Branch Drive, Suite 100 • Gainesville, VA 20155
 Phone 703 679 5600 • Fax 703 679 5601
 wetlandstudies.com

REVISIONS

No.	Date	Description	Rev. By	App. By	No.	Date	Description	Rev. By	App. By
1	3/23/2009	Revised Limits of Clearing and Access Path	SRP	FRG	6	3/23/2009	Revised legend and stream lengths	SRP	FRG
2	3/23/2009	Fine grading around bridges and walls	SRP	FRG	8	3/23/2009	Added tributary grading	SRP	FRG
3	3/23/2009	Revised bridge table	SRP	FRG	10	3/23/2009	Clear debris from concrete ditch	SRP	FRG
4	3/23/2009	Added trees to be saved (14 Total)	SRP	FRG	11	3/23/2009	Decreased stepool depth	SRP	FRG
5	3/23/2009	Added trees to be removed (5 Total)	SRP	FRG	12	3/31/2009	Added missing revision cloud	SRP	FRG
6	3/23/2009	Revised legend and stream lengths	SRP	FRG	16	3/31/2009	Place double deck mats through wetland area	SRP	FRG

DATE: MARCH 7, 2009 SCALE: 1" = 30'

REVISIONS

No.	Date	Description	Rev. By	App. By
1	3/23/2009	Revised legend and stream lengths	SRP	FRG
2	3/23/2009	Added tributary grading	SRP	FRG
3	3/23/2009	Clear debris from concrete ditch	SRP	FRG
4	3/23/2009	Decreased stepool depth	SRP	FRG
5	3/31/2009	Added missing revision cloud	SRP	FRG
6	3/31/2009	Place double deck mats through wetland area	SRP	FRG

H. D.: VCS NAD 83 V. D.: NGVD 29

Boundary and Topo Source: WSSI and Fairfax Digital Data

Design Draft Approved

SRP SRP FRG

Sheet #

3 of 3

Computer File Name: 1-2009-0303-01-0000-0000

1
 REVISED ALL LIMITS OF CLEARING AND TEMPORARY ACCESS PATH TO STANDARDIZED WIDTH, PROVIDE STORAGE, AND INCLUDE STREAM.

EXISTING MEANDER IS VERY TIGHT. ENLARGED RADIUS TO IMPROVE BANK STABILITY & CHANNEL GEOMETRY.

MOVE CHANNEL TO LEFT TO SAVE TREES 21727, 21728, 21729, 21730, & 21732.

TIE OUT RIGHT BANK GRADING AT A 3:1 SLOPE

REMOVE EXISTING DEBRIS FROM CONCRETE DITCH

SHIFTED ACCESS PATH TO SAVE TREE 22597 AND 3' HOLLY.

END TEMPORARY CONSTRUCTION ENTRANCE (CE) AND START DECK MAT TEMPORARY ACCESS PATH

ACCESS PATH DECK MATS SHALL BE PLACED ALONG ENTIRE LENGTH OF TEMPORARY ACCESS PATH UNLESS SPECIFIED OTHERWISE.

REACH 4B (16+52 TO 33+85)
 WIDTH = 20.0'
 DEPTH = 2.1'
 PROPOSED LENGTH = 1733'
 R_c MIN = 53'

SHIFTED ACCESS PATH TO SAVE TREES 33706 AND 33707.

REMOVE EXISTING DEBRIS FROM CONCRETE DITCH

SHIFTED ACCESS PATH TO SAVE TREE 22597 AND 3' HOLLY.

