

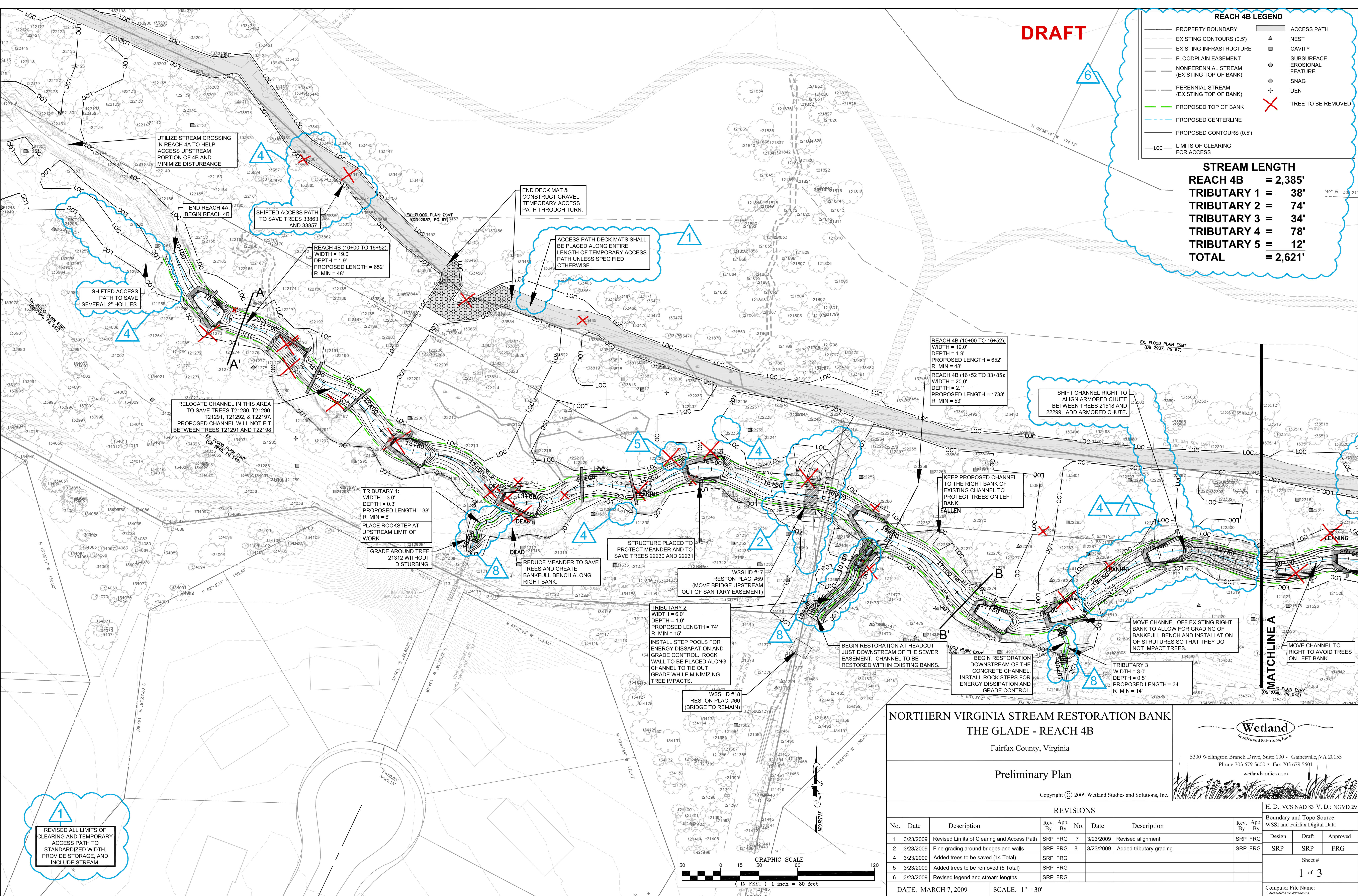
DRAFT

REACH 4B LEGEND

- PROPERTY BOUNDARY
- EXISTING CONTOURS (0.5')
- EXISTING INFRASTRUCTURE
- FLOODPLAIN EASEMENT
- NONPERENNIAL STREAM (EXISTING TOP OF BANK)
- PERENNIAL STREAM (EXISTING TOP OF BANK)
- PROPOSED TOP OF BANK
- PROPOSED CENTERLINE
- PROPOSED CONTOURS (0.5')
- LOC - LIMITS OF CLEARING FOR ACCESS
- ACCESS PATH
- NEST
- CAVITY
- SUBSURFACE EROSIONAL FEATURE
- SNAG
- DN
- TREE TO BE REMOVED

STREAM LENGTH

- REACH 4B = 2,385'
- TRIBUTARY 1 = 38'
- TRIBUTARY 2 = 74'
- TRIBUTARY 3 = 34'
- TRIBUTARY 4 = 78'
- TRIBUTARY 5 = 12'
- TOTAL = 2,621'



1

REVISED ALL LIMITS OF CLEARING AND TEMPORARY ACCESS PATH TO STANDARDIZED WIDTH, PROVIDE STORAGE, AND INCLUDE STREAM.

NORTHERN VIRGINIA STREAM RESTORATION BANK
THE GLADE - REACH 4B

Fairfax County, Virginia

Preliminary Plan

Copyright © 2009 Wetland Studies and Solutions, Inc.



5300 Wellington Branch Drive, Suite 100 • Gainesville, VA 20155
Phone 703 679 5600 • Fax 703 679 5601
wetlandstudies.com

REVISIONS									
No.	Date	Description	Rev. By	App. By	Date	Description	Rev. By	App. By	
1	3/23/2009	Revised Limits of Clearing and Access Path	SRP	FRG	7	3/23/2009	Revised alignment	SRP	FRG
2	3/23/2009	Fine grading around bridges and walls	SRP	FRG	8	3/23/2009	Added tributary grading	SRP	FRG
4	3/23/2009	Added trees to be saved (14 Total)	SRP	FRG					
5	3/23/2009	Added trees to be removed (5 Total)	SRP	FRG					
6	3/23/2009	Revised legend and stream lengths	SRP	FRG					

H. D.: VCS NAD 83 V. D.: NGVD 29

Boundary and Topo Source: WSSI and Fairfax Digital Data

Design Draft Approved

SRP SRP FRG

Sheet #
1 of 3

DATE: MARCH 7, 2009 SCALE: 1" = 30'

Computer File Name:
1-StreamRestoration-Reach4B.dwg

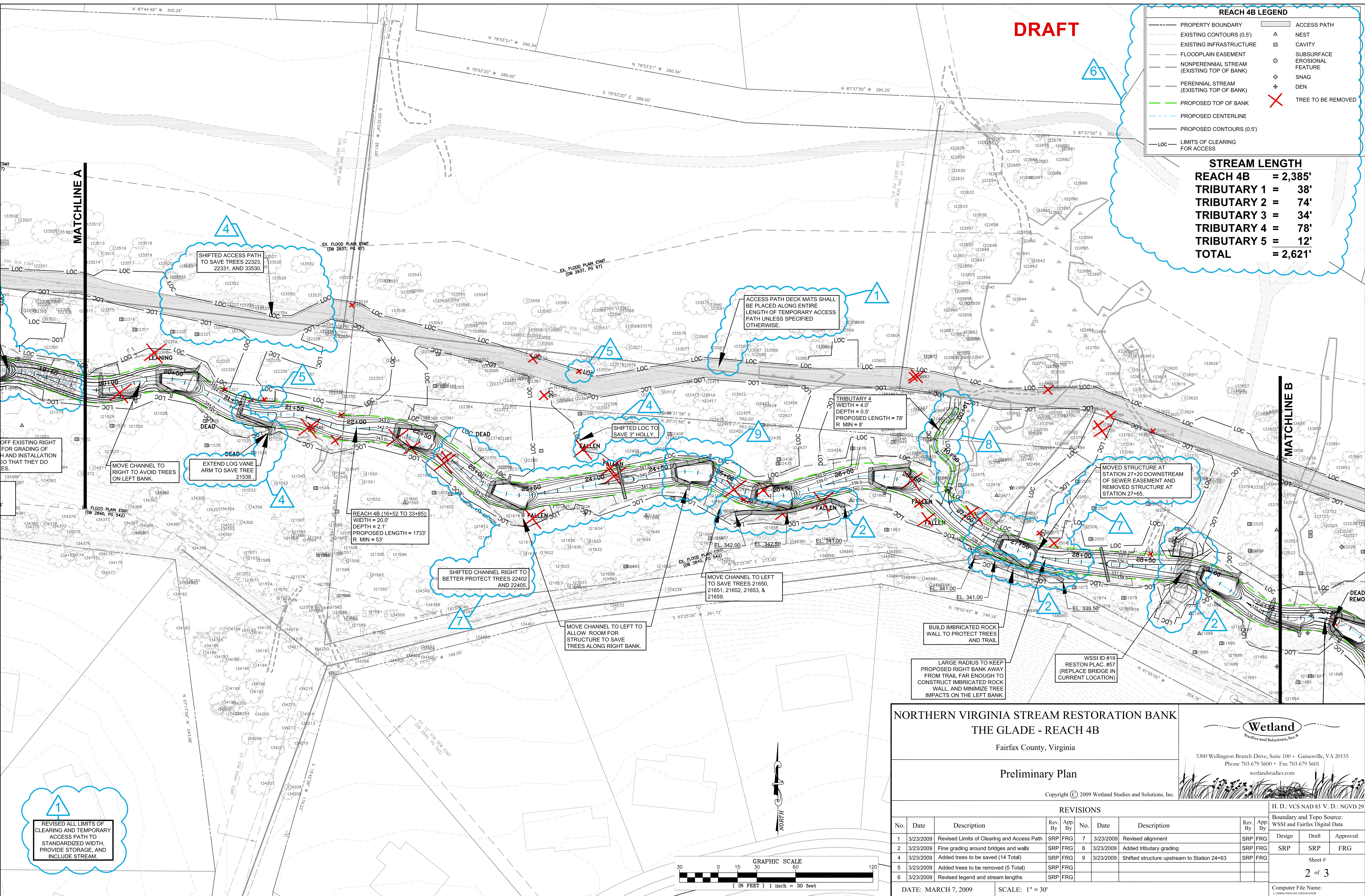
DRAFT

REACH 4B LEGEND

- PROPERTY BOUNDARY
- EXISTING CONTOURS (0.5')
- FLOODPLAIN EASEMENT
- NONPERENNIAL STREAM (EXISTING TOP OF BANK)
- PERENNIAL STREAM (EXISTING TOP OF BANK)
- PROPOSED TOP OF BANK
- PROPOSED CENTERLINE
- PROPOSED CONTOURS (0.5')
- LIMITS OF CLEARING FOR ACCESS
- ACCESS PATH
- NEST
- CAVITY
- SUBSURFACE EROSIONAL FEATURE
- SNAG
- DEN
- TREE TO BE REMOVED

STREAM LENGTH

REACH 4B	= 2,385'
TRIBUTARY 1	= 38'
TRIBUTARY 2	= 74'
TRIBUTARY 3	= 34'
TRIBUTARY 4	= 78'
TRIBUTARY 5	= 12'
TOTAL	= 2,621'



MATCHLINE A

MATCHLINE B

1

REVISED ALL LIMITS OF CLEARING AND TEMPORARY ACCESS PATH TO STANDARDIZED WIDTH, PROVIDE STORAGE, AND INCLUDE STREAM.

NORTHERN VIRGINIA STREAM RESTORATION BANK
THE GLADE - REACH 4B

Fairfax County, Virginia

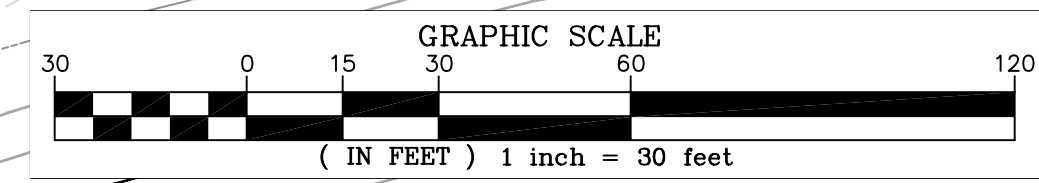
Preliminary Plan

Copyright © 2009 Wetland Studies and Solutions, Inc.



5300 Wellington Branch Drive, Suite 100 • Gainesville, VA 20155
 Phone 703 679 5600 • Fax 703 679 5601
 wetlandstudies.com

REVISIONS						H. D.: VCS NAD 83 V. D.: NGVD 29			
No.	Date	Description	Rev. By	App. By	No.	Date	Description	Rev. By	App. By
1	3/23/2009	Revised Limits of Clearing and Access Path	SRP	FRG	7	3/23/2009	Revised alignment	SRP	FRG
2	3/23/2009	Fine grading around bridges and walls	SRP	FRG	8	3/23/2009	Added tributary grading	SRP	FRG
4	3/23/2009	Added trees to be saved (14 Total)	SRP	FRG	9	3/23/2009	Shifted structure upstream to Station 24+63	SRP	FRG
5	3/23/2009	Added trees to be removed (5 Total)	SRP	FRG					
6	3/23/2009	Revised legend and stream lengths	SRP	FRG					



DATE: MARCH 7, 2009 SCALE: 1" = 30'

DRAFT

REACH 4B LEGEND

- PROPERTY BOUNDARY
- EXISTING CONTOURS (0.5')
- EXISTING INFRASTRUCTURE
- FLOODPLAIN EASEMENT
- NONPERENNIAL STREAM (EXISTING TOP OF BANK)
- PERENNIAL STREAM (EXISTING TOP OF BANK)
- PROPOSED TOP OF BANK
- PROPOSED CENTERLINE
- PROPOSED CONTOURS (0.5')
- LIMITS OF CLEARING FOR ACCESS
- ACCESS PATH
- NEST
- CAVITY
- SUBSURFACE EROSIONAL FEATURE
- SNAG
- DEN
- TREE TO BE REMOVED

STREAM LENGTH

REACH 4B = 2,385'

TRIBUTARY 1 = 38'

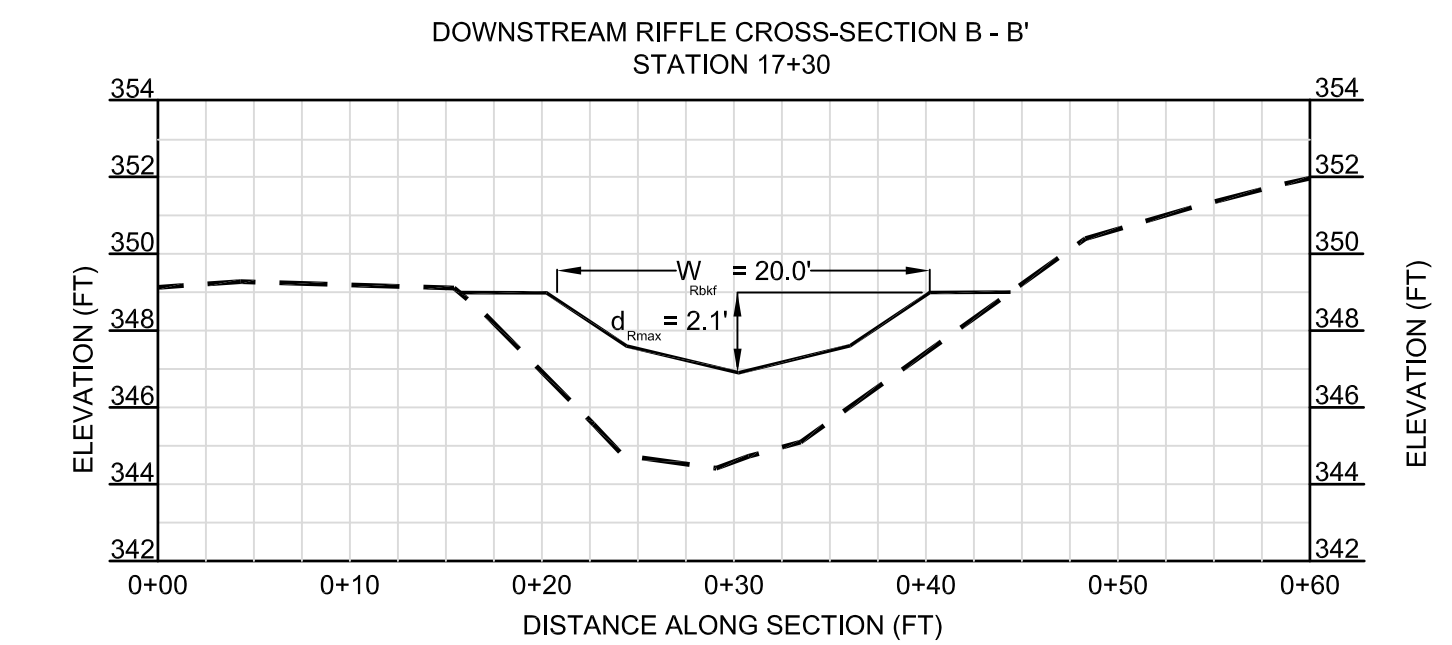
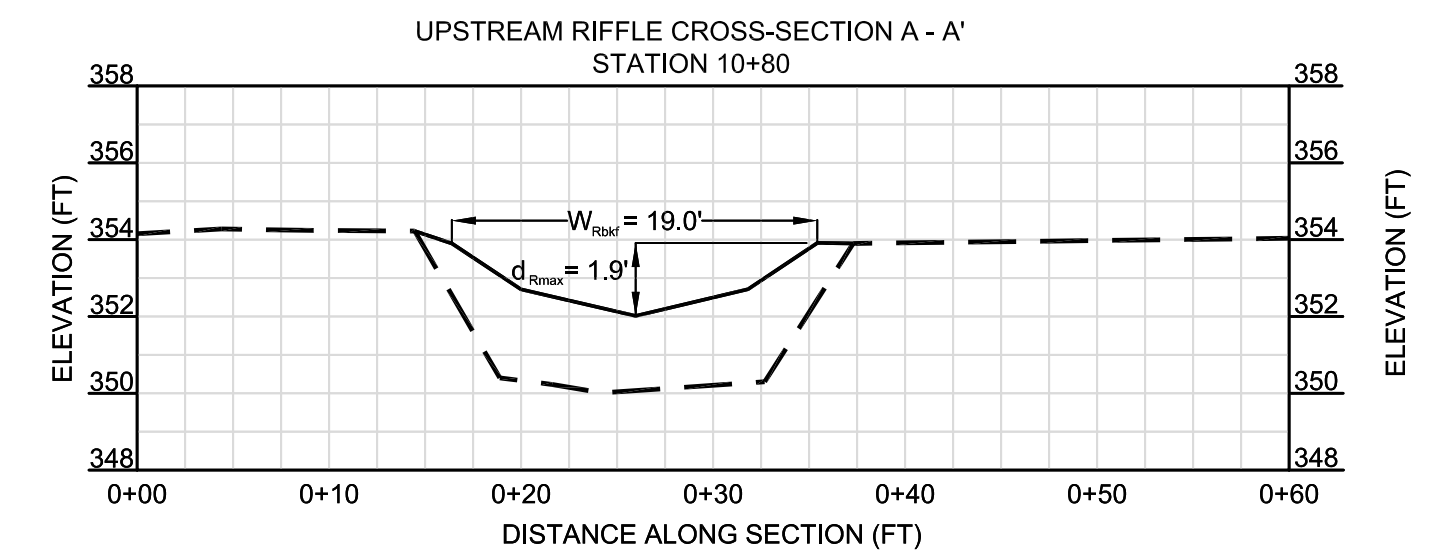
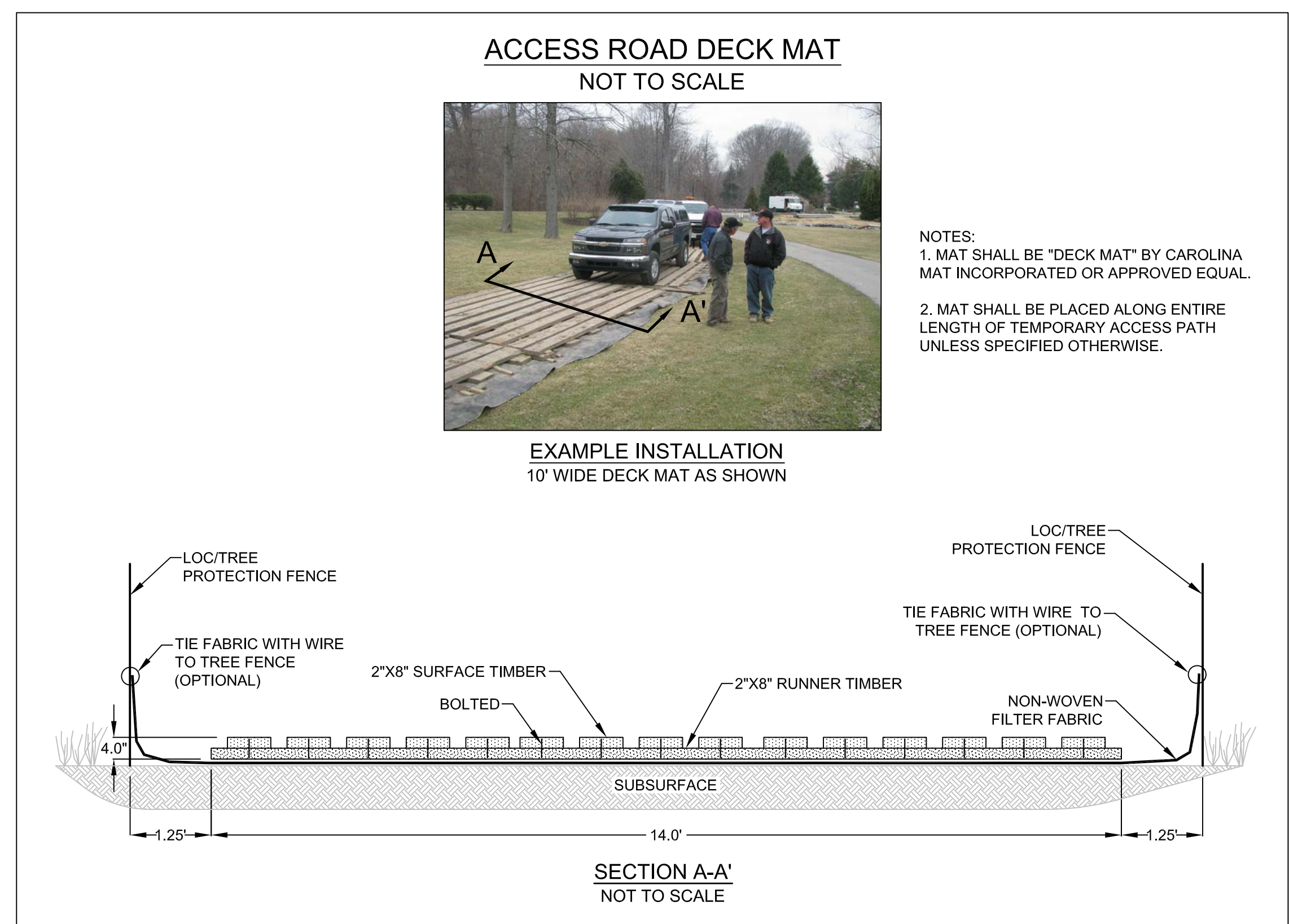
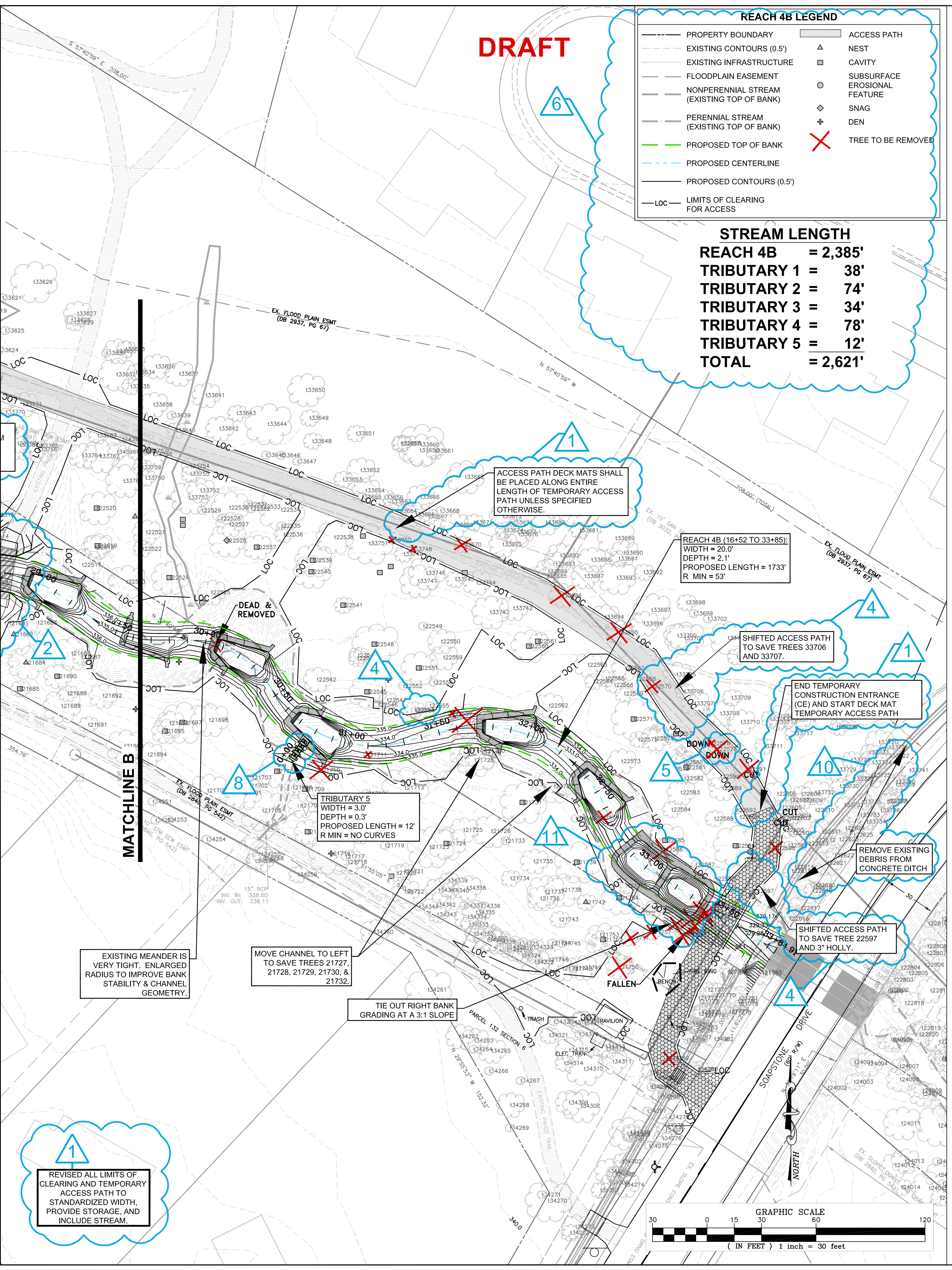
TRIBUTARY 2 = 74'

TRIBUTARY 3 = 34'

TRIBUTARY 4 = 78'

TRIBUTARY 5 = 12'

TOTAL = 2,621'



REACH 4 - PROPOSED BRIDGE DIMENSIONS

REACH NAME	WSSI ID#	RESTON PLAC. #	BANKFULL WIDTH (FT)	EXISTING		PROPOSED	
				LENGTH (FT)	WIDTH (FT)	LENGTH (FT)	WIDTH (FT)
REACH 4A	14	12	16	21	4	NOT TO BE REPLACED	
	15	63	16.5	20	10	26	10
	16	62	18	18	10	28	10
	28	N/A (NEW)	11.5	N/A	N/A	22	10
REACH 4B	17	59	19	14	10	28	10
	18	80	6	14	10	NOT TO BE REPLACED	
	19	57	20	18	10	28	10

NOTES:

- BOTTOM OF BRIDGE DECK TO BE 2 FT HIGHER THAN BANKFULL DEPTH

CROSS SECTION LEGEND

- PROPOSED STREAM
- EXISTING STREAM

SCALE:
H/V: 2:1

NORTHERN VIRGINIA STREAM RESTORATION BANK
THE GLADE - REACH 4B
Fairfax County, Virginia

Preliminary Plan

Copyright © 2009 Wetland Studies and Solutions, Inc.

Wetland Studies and Solutions, Inc.
5300 Wellington Branch Drive, Suite 100 • Gainesville, VA 20155
Phone 703 679 5600 • Fax 703 679 5601
wetlandstudies.com

H. D.: VCS NAD 83 V. D.: NGVD 29

Boundary and Topo Source: WSSI and Fairfax Digital Data

REVISIONS		Rev. By	App. By	No.	Date	Description	Rev. By	App. By	No.	Date	Description	Rev. By	App. By	No.	Date	Description	
1	3/23/2009			SRP	FRG	6	3/23/2009		SRP	FRG	Revised legend and stream lengths						
2	3/23/2009			SRP	FRG	8	3/23/2009		SRP	FRG	Added tributary grading						
3	3/23/2009			SRP	FRG	10	3/23/2009		SRP	FRG	Clear debris from concrete ditch						
4	3/23/2009			SRP	FRG	11	3/23/2009		SRP	FRG	Added trees to be saved (14 Total)						
5	3/23/2009			SRP	FRG				SRP	FRG	Decreased stepool depth						

DATE: MARCH 7, 2009 SCALE: 1" = 30'

Design Draft Approved

Sheet #
3 of 3

Computer File Name:
1-2009-2009-03-07-001.dwg

1
REVISED ALL LIMITS OF CLEARING AND TEMPORARY ACCESS PATH TO STANDARDIZED WIDTH, PROVIDE STORAGE, AND INCLUDE STREAM.

