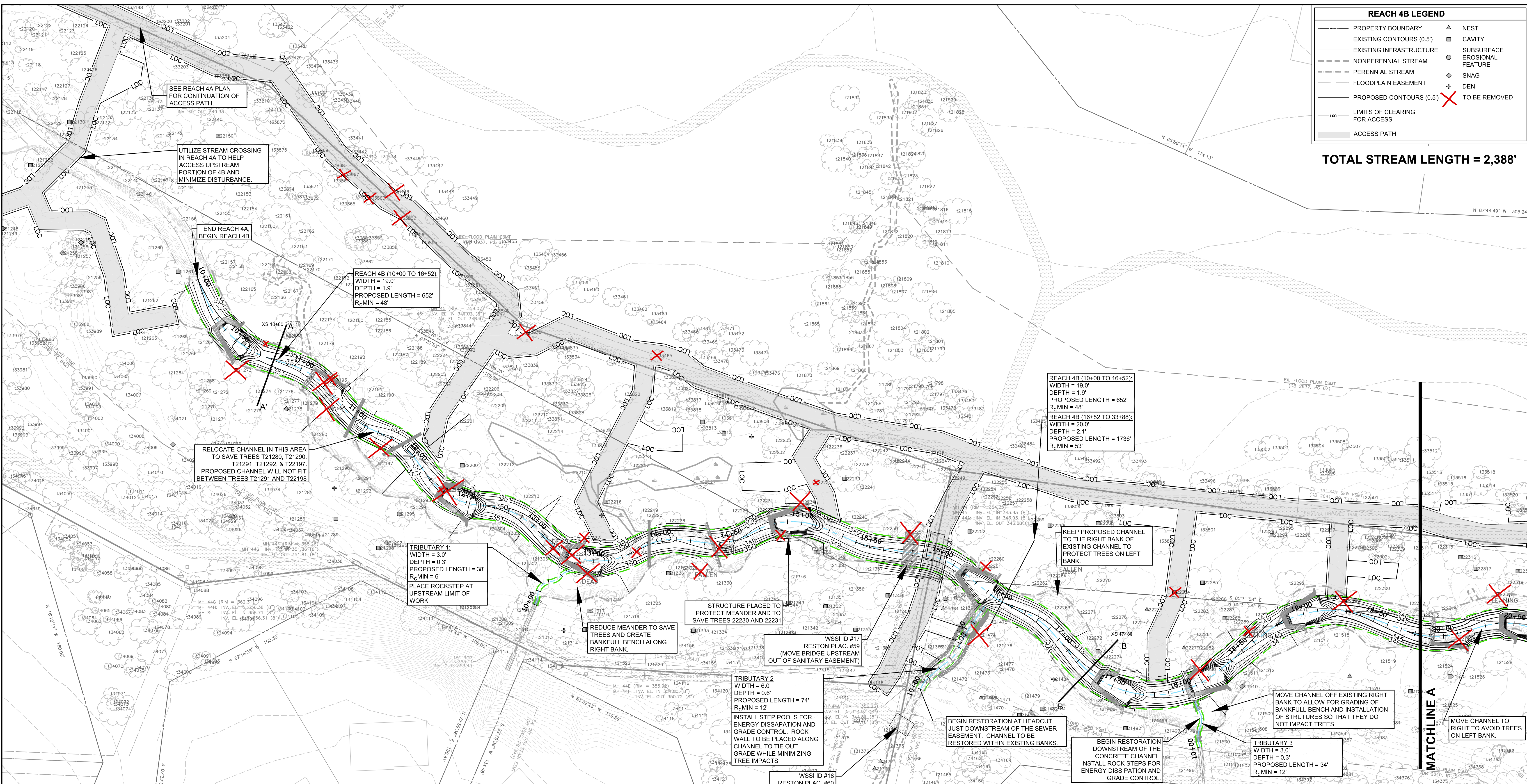


**REACH 4B LEGEND**

- PROPERTY BOUNDARY
- EXISTING CONTOURS (0.5')
- EXISTING INFRASTRUCTURE
- NONPERENNIAL STREAM
- PERENNIAL STREAM
- FLOODPLAIN EASEMENT
- PROPOSED CONTOURS (0.5')
- LIMITS OF CLEARING FOR ACCESS
- ACCESS PATH
- NEST
- CAVITY
- SUBSURFACE EROSIONAL FEATURE
- SNAG
- DEN
- TO BE REMOVED

**TOTAL STREAM LENGTH = 2,388'**



**NORTHERN VIRGINIA STREAM RESTORATION BANK**  
**THE GLADE - REACH 4B**  
 Fairfax County, Virginia  
 Preliminary Plan  
 Copyright © 2009 Wetland Studies and Solutions, Inc.

**Wetland**  
 Studies and Solutions, Inc.  
 5300 Wellington Branch Drive, Suite 100 • Gainesville, VA 20155  
 Phone 703 679 5600 • Fax 703 679 5601  
 wetlandstudies.com

REVISIONS			Rev. By	App. By
No.	Date	Description		

H. D.: VCS NAD 83 V. D.: NGVD 29  
 Boundary and Topo Source:  
 WSSI and Fairfax Digital Data

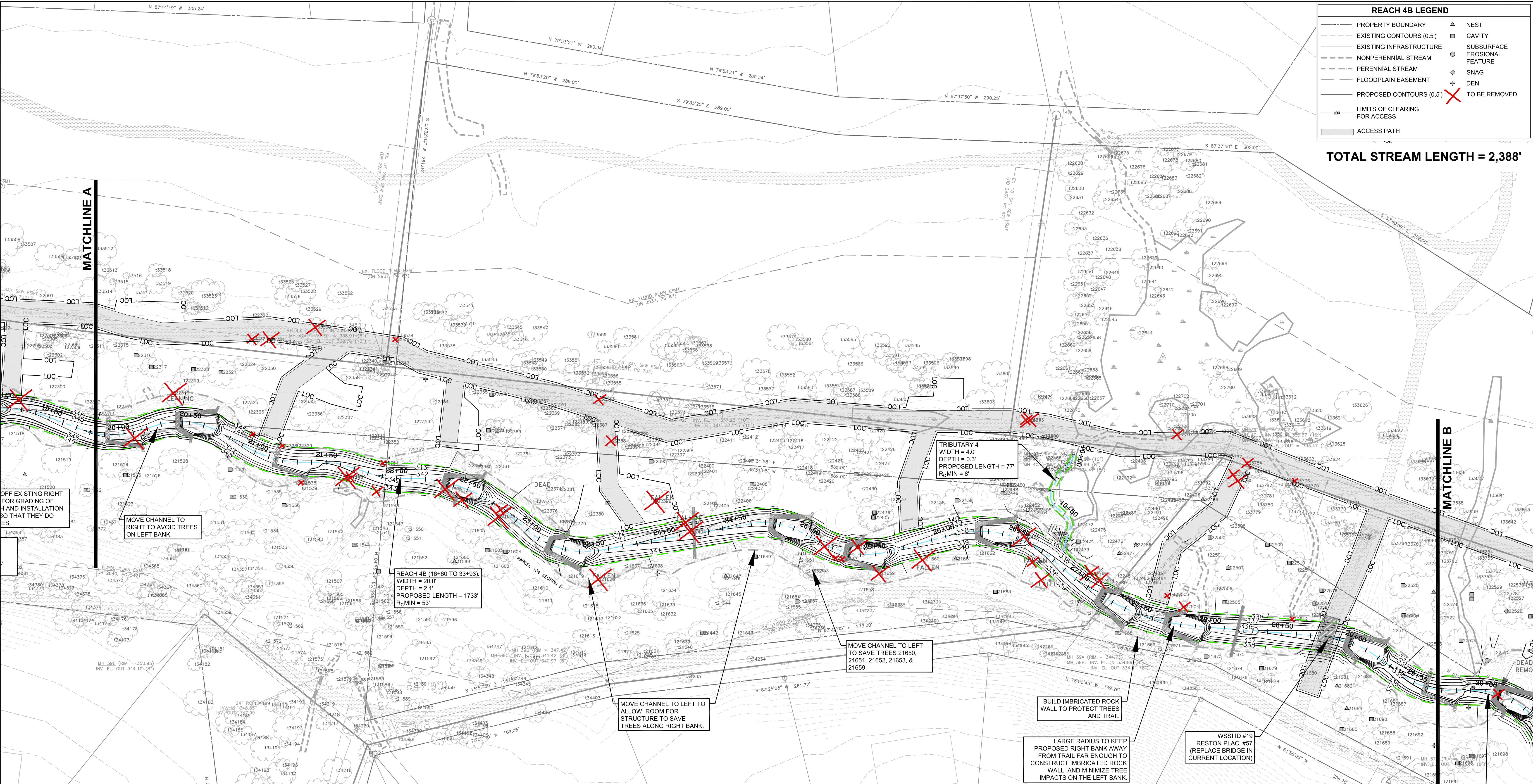
Design	Draft	Approved
SRP	SRP	FRG

Sheet #  
**1 of 3**  
 Computer File Name:  
 L:\3000\DATA\DC\0094-2\09

DATE: MARCH 7, 2009      SCALE: 1" = 30'

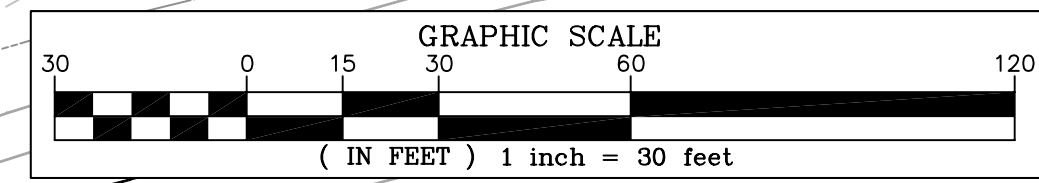
REACH 4B LEGEND	
---	PROPERTY BOUNDARY
- - -	EXISTING CONTOURS (0.5')
- - -	NONPERENNIAL STREAM
- - -	PERENNIAL STREAM
- - -	FLOODPLAIN EASEMENT
- - -	PROPOSED CONTOURS (0.5')
- - -	LIMITS OF CLEARING FOR ACCESS
- - -	ACCESS PATH
▲	NEST
□	CAVITY
○	SUBSURFACE EROSIONAL FEATURE
◇	SNAG
+	DEN
✗	TO BE REMOVED

TOTAL STREAM LENGTH = 2,388'



NORTHERN VIRGINIA STREAM RESTORATION BANK  
 THE GLADE - REACH 4B  
 Fairfax County, Virginia  
 Preliminary Plan  
 Copyright © 2009 Wetland Studies and Solutions, Inc.

**Wetland**  
 Studies and Solutions, Inc.  
 5300 Wellington Branch Drive, Suite 100 • Gainesville, VA 20155  
 Phone 703 679 5600 • Fax 703 679 5601  
 wetlandstudies.com

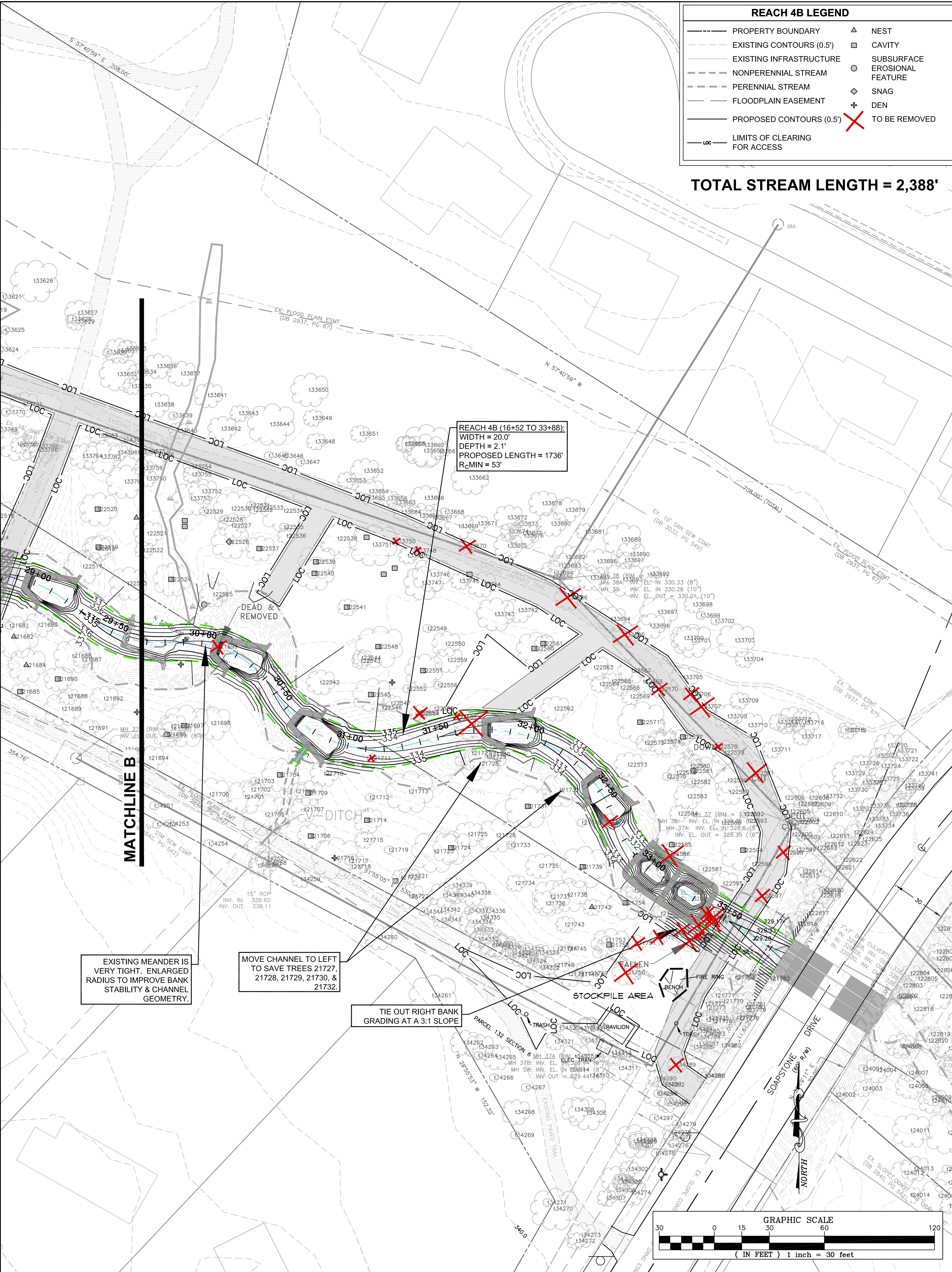


REVISIONS					H. D.: VCS NAD 83 V. D.: NGVD 29		
No.	Date	Description	Rev. By	App. By	Boundary and Topo Source: WSSI and Fairfax Digital Data		
					Design	Draft	Approved
					SRP	SRP	FRG
					Sheet #		
					2 of 3		
					Computer File Name:		

DATE: MARCH 7, 2009 SCALE: 1" = 30'

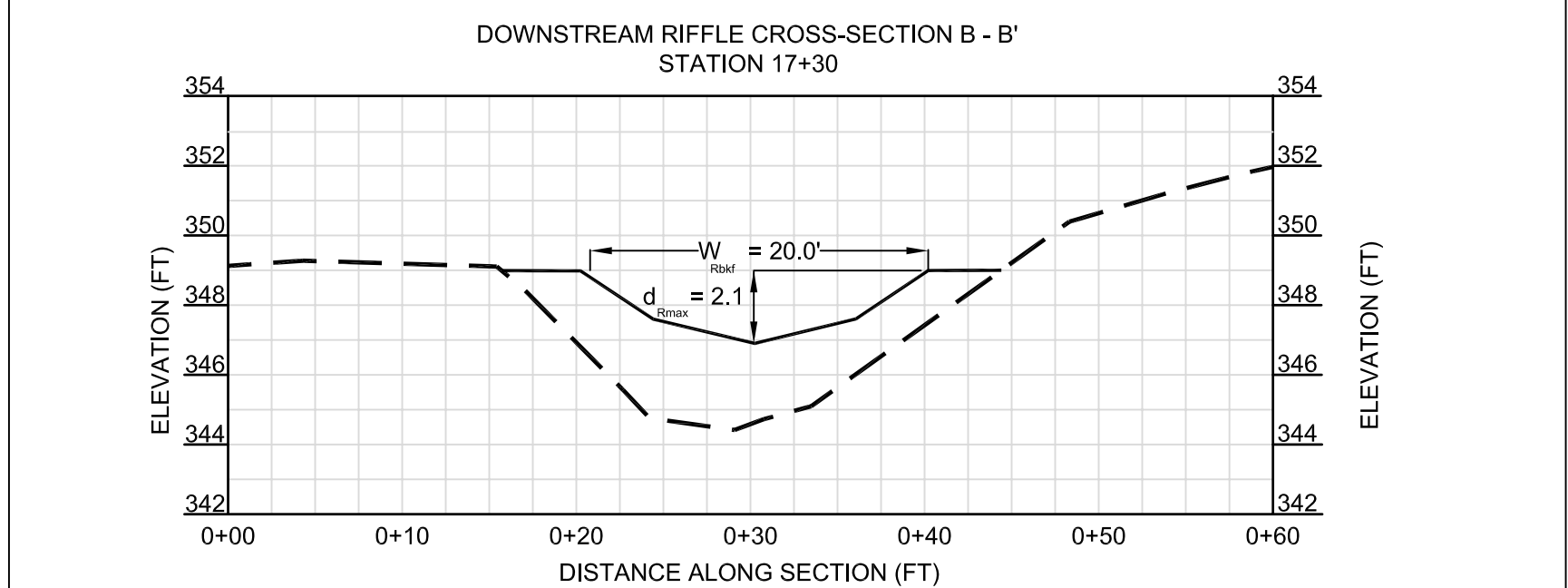
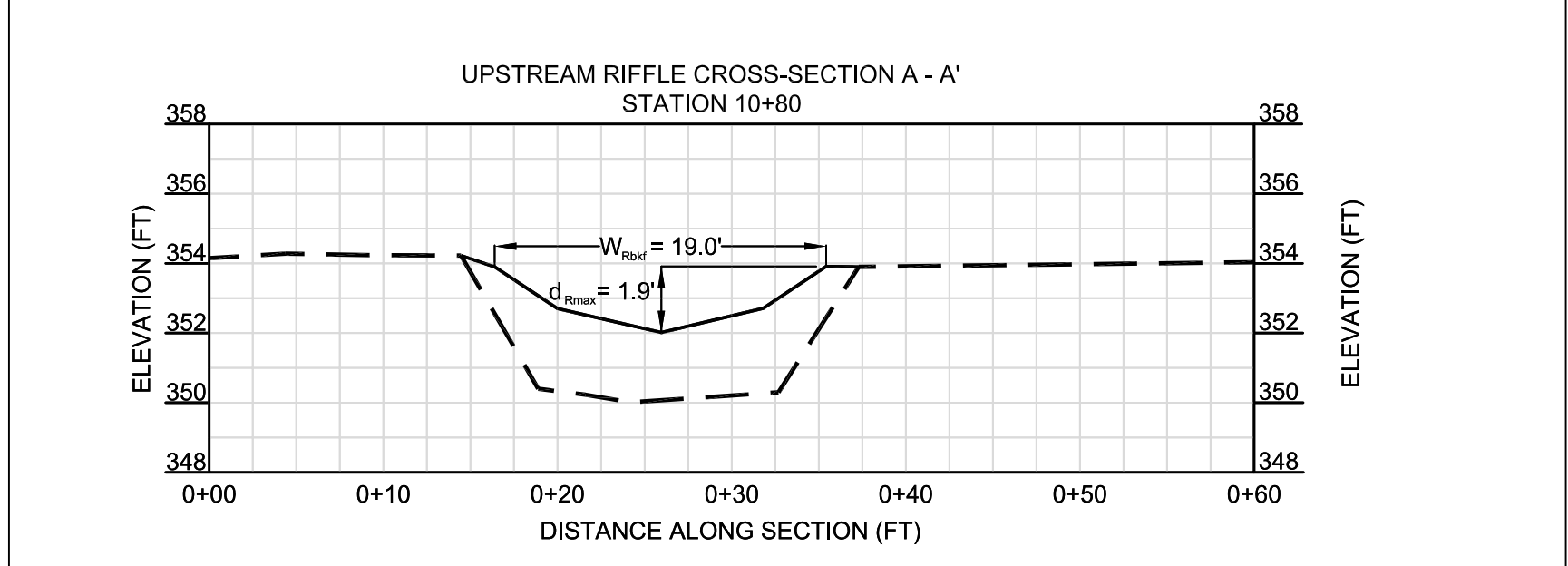
REACH 4B LEGEND	
---	PROPERTY BOUNDARY
- - -	EXISTING CONTOURS (0.5')
---	EXISTING INFRASTRUCTURE
- - -	NONPERENNIAL STREAM
---	PERENNIAL STREAM
---	FLOODPLAIN EASEMENT
---	PROPOSED CONTOURS (0.5')
---	LIMITS OF CLEARING FOR ACCESS
▲	NEST
□	CAVITY
○	SUBSURFACE EROSIONAL FEATURE
◇	SNAG
+	DEN
✗	TO BE REMOVED

TOTAL STREAM LENGTH = 2,388'



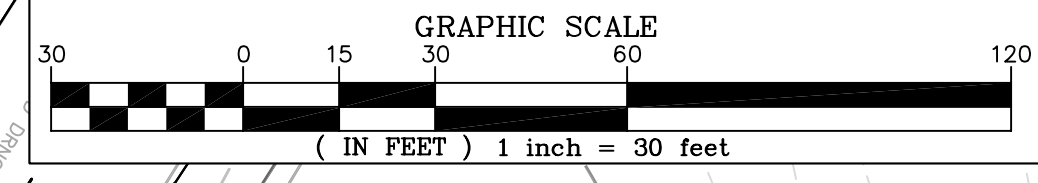
REACH 4 - PROPOSED BRIDGE DIMENSIONS							
REACH NAME	WSSI ID#	RESTON PLAC. #	BANKFULL WIDTH (FT)	EXISTING		PROPOSED	
				LENGTH (FT)	WIDTH (FT)	LENGTH (FT)	WIDTH (FT)
REACH 4A	14	12	16	21	4	NOT TO BE REPLACED	
	15	63	16.5	20	10	26	10
	16	62	18	18	10	28	10
	28	N/A (NEW)	12.5	N/A	N/A	22	10
REACH 4B	17	59	19	19.5	10	28	10
	18	60	6	14	10	NOT TO BE REPLACED	
	19	57	20	18	10	28	10

NOTES:  
1. BOTTOM OF BRIDGE DECK TO BE 2 FT HIGHER THAN BANKFULL DEPTH



CROSS SECTION LEGEND  
PROPOSED STREAM  
EXISTING STREAM

SCALE: H/V: 2:1



NORTHERN VIRGINIA STREAM RESTORATION BANK  
THE GLADE - REACH 4B

Fairfax County, Virginia

Preliminary Plan

Copyright © 2009 Wetland Studies and Solutions, Inc.

5300 Wellington Branch Drive, Suite 100 • Gainesville, VA 20155  
Phone 703 679 5600 • Fax 703 679 5601  
wetlandstudies.com

REVISIONS					H. D.: VCS NAD 83 V. D.: NGVD 29		
No.	Date	Description	Rev. By	App. By	Boundary and Topo Source: WSSI and Fairfax Digital Data		
					Design	Draft	Approved
					SRP	SRP	FRG
					Sheet #		
					3 of 3		
DATE: MARCH 7, 2009					SCALE: 1" = 30'		
					Computer File Name:		