

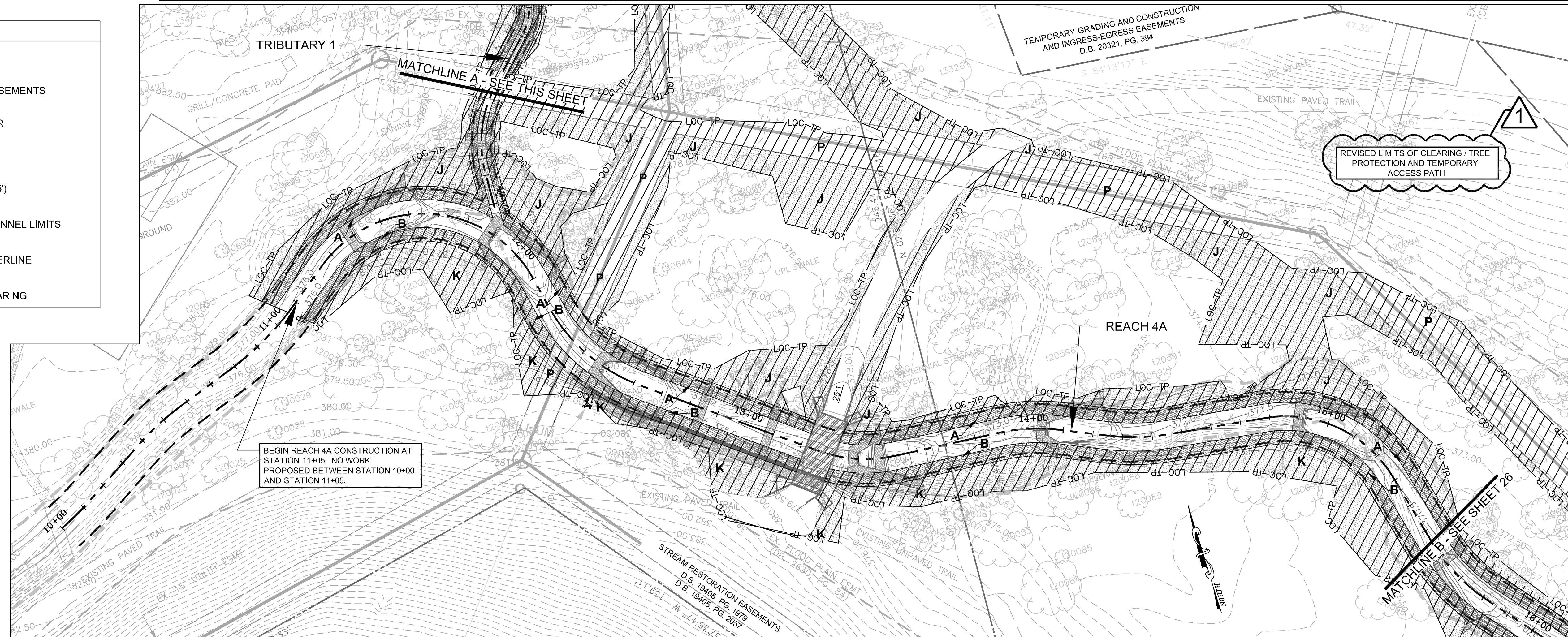
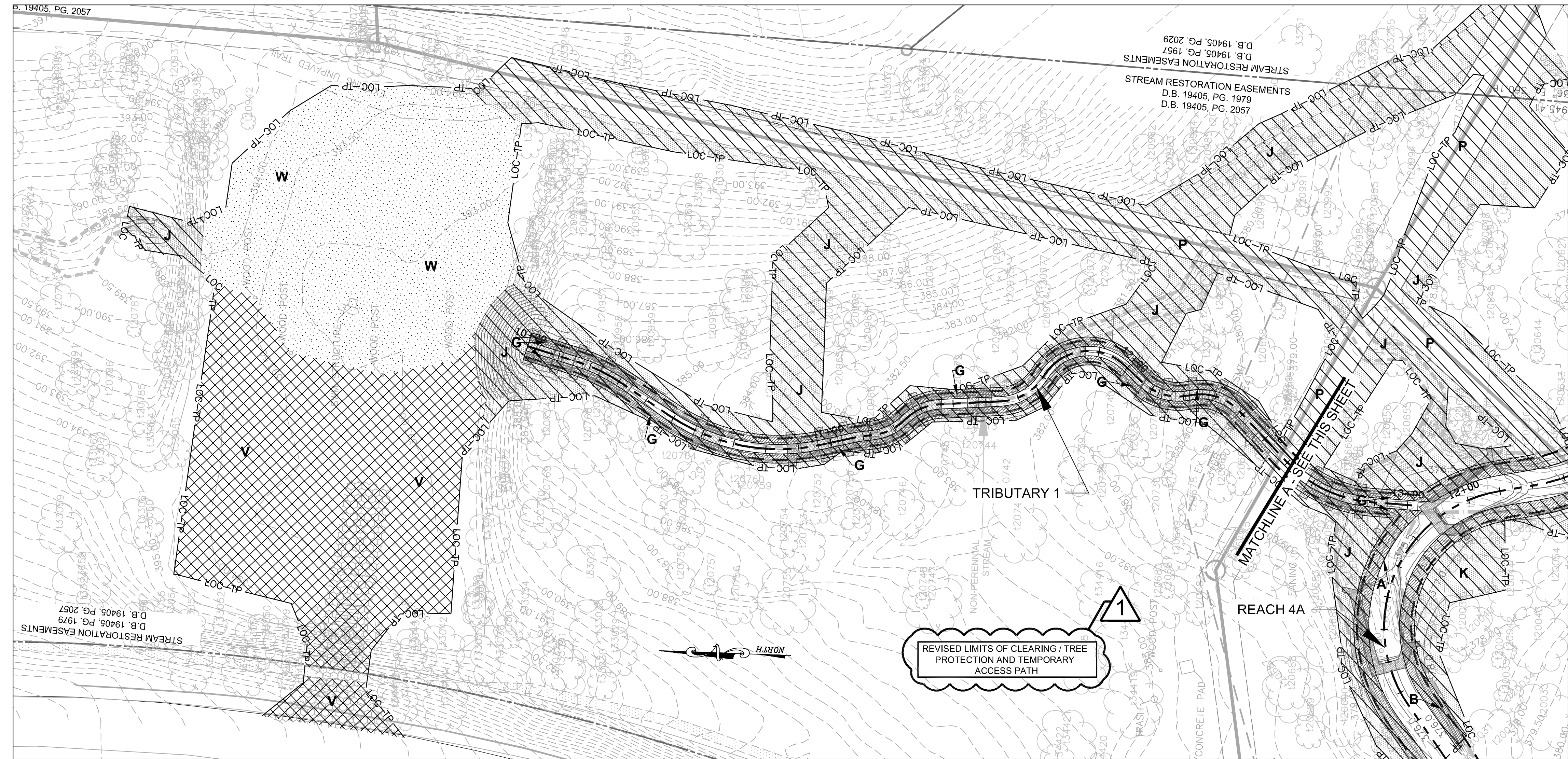
PLANTING AREAS	SYMBOL
STREAMSIDE* 25,203 SF = 0.58 AC 5,770 LF	A, B, C, D, E, F, G, H
RIPARIAN FOREST* 81,824 SF = 1.89 AC	J, K, L, M, N, O
RIPARIAN SEED MIX* 29,186 SF = 0.67 AC	P, Q, R
WILDFLOWER AREA 7,465 SF = 0.17 AC	V
GRASS AREA 6,579 SF = 0.15 AC	W

*RIPARIAN SEED MIX SHALL BE DISTRIBUTED EVENLY THROUGHOUT ALL DISTURBED AREAS IN THE AMOUNT SPECIFIED ON THE VEGETATION SCHEDULE SHEET

PLANTING LEGEND

	PROPERTY LINE
	STREAM RESTORATION EASEMENTS
	EXISTING SANITARY SEWER
	EXISTING CONTOURS (0.5')
	PROPOSED CONTOURS (0.5')
	PROPOSED BANKFULL CHANNEL LIMITS
	PROPOSED STREAM CENTERLINE
	PROPOSED LIMITS OF CLEARING

THIS SHEET TO BE USED FOR PLANTING PLAN PURPOSES ONLY.

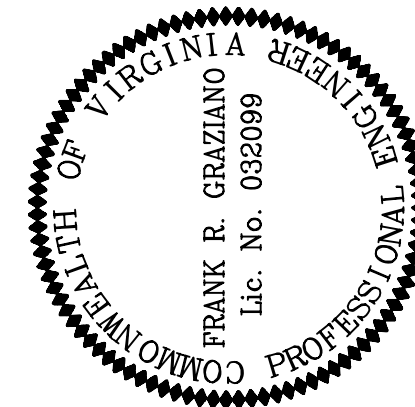


Northern Virginia Stream Restoration Bank
The Glade - Reach 4A

Fairfax County, Virginia

Planting Plan

Copyright © 2009 Wetland Studies and Solutions, Inc.



REVISIONS		No.	Date	Rev. By	App. By	Description
		1	5/28/09	BJB	FRG	Revised LOC / TP and Temporary Access Path

Horizontal Datum: VCS NAD 83
Vertical Datum: NGVD 29
Boundary and Topo Source: WSSI and Fairfax Digital Data

Design	Draft	Approved
RDD	RDD	FRG

Sheet #
25 of 105

Computer File Name:
1:2009052010.AC4801052810108\Fairfax\5103109\05a\Fairfax PLANTING PLAN.dwg

Wetland
Studies and Solutions, Inc.
5300 Wellington Branch Drive, Suite 100 • Gainesville, VA 20155
Phone: 703 679 5600 • Fax: 703 679 5601
wetlandstudies.com