

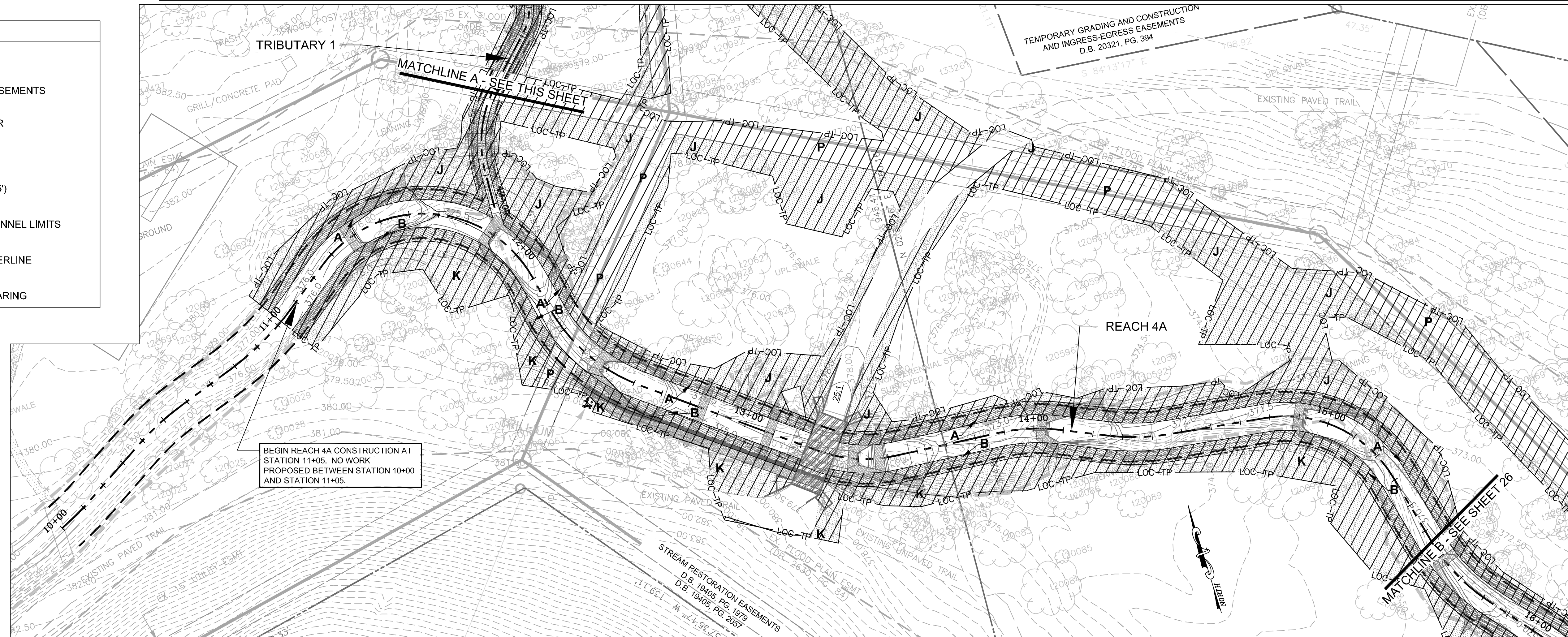
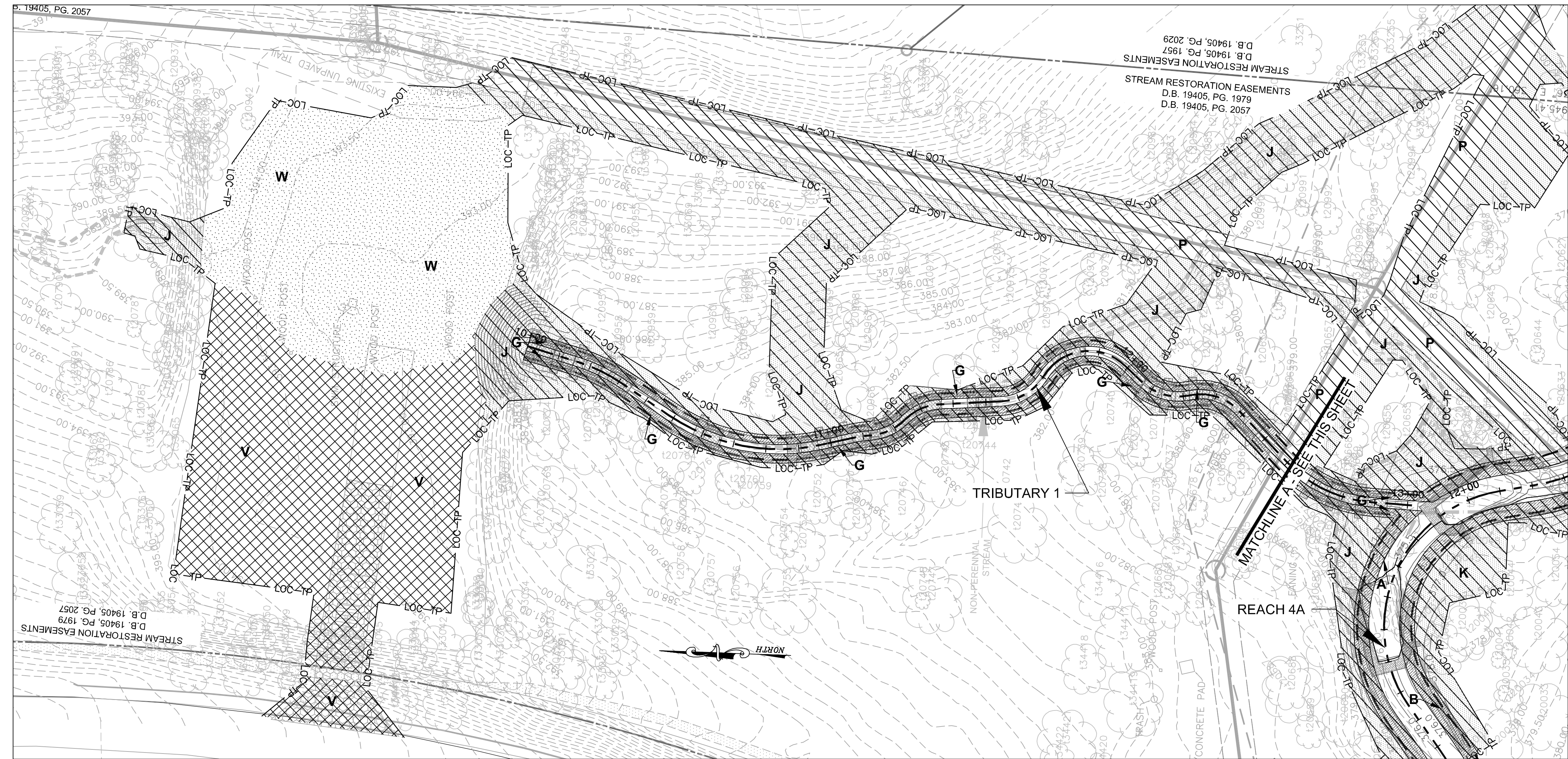
PLANTING AREAS	SYMBOL
STREAMSIDE* 25,203 SF = 0.58 AC 5,770 LF	A, B, C, D, E, F, G, H
RIPARIAN FOREST* 83,735 SF = 1.92 AC	J, K, L, M, N, O
RIPARIAN SEED MIX* 30,694 SF = 0.70 AC	P, Q, R, S, T, U
WILDFLOWER AREA 7,244 SF = 0.17 AC	V
GRASS AREA 6,378 SF = 0.15 AC	W

*RIPARIAN SEED MIX SHALL BE DISTRIBUTED EVENLY THROUGHOUT ALL DISTURBED AREAS IN THE AMOUNT SPECIFIED ON THE VEGETATION SCHEDULE SHEET

PLANTING LEGEND

	PROPERTY LINE
	STREAM RESTORATION EASEMENTS
	EXISTING SANITARY SEWER
	EXISTING CONTOURS (0.5')
	PROPOSED CONTOURS (0.5')
	PROPOSED BANKFULL CHANNEL LIMITS
	PROPOSED STREAM CENTERLINE
	PROPOSED LIMITS OF CLEARING

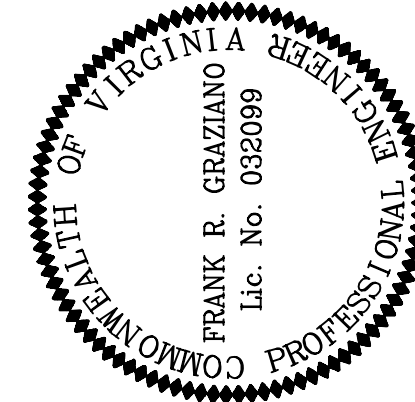
THIS SHEET TO BE USED FOR PLANTING PLAN PURPOSES ONLY.



Northern Virginia Stream Restoration Bank
The Glade - Reach 4A

Fairfax County, Virginia

Planting Plan



REVISIONS	
No.	Description

Horizontal Datum:	VCS NAD 83	
Vertical Datum:	NGVD 29	
Boundary and Topo Source:	WSSI and Fairfax Digital Data	
Design	Draft	Approved
RDD	RDD	FRG
Sheet #	25 of 105	
Computer File Name:	1:2009050101.AC\M09050101\PLANTING PLAN.rvt	

Wetland
Studies and Solutions, Inc.
5300 Wellington Branch Drive, Suite 100 • Gainesville, VA 20155
Phone: 703 679 5600 • Fax: 703 679 5601
wetlandstudies.com

Copyright © 2009 Wetland Studies and Solutions, Inc.