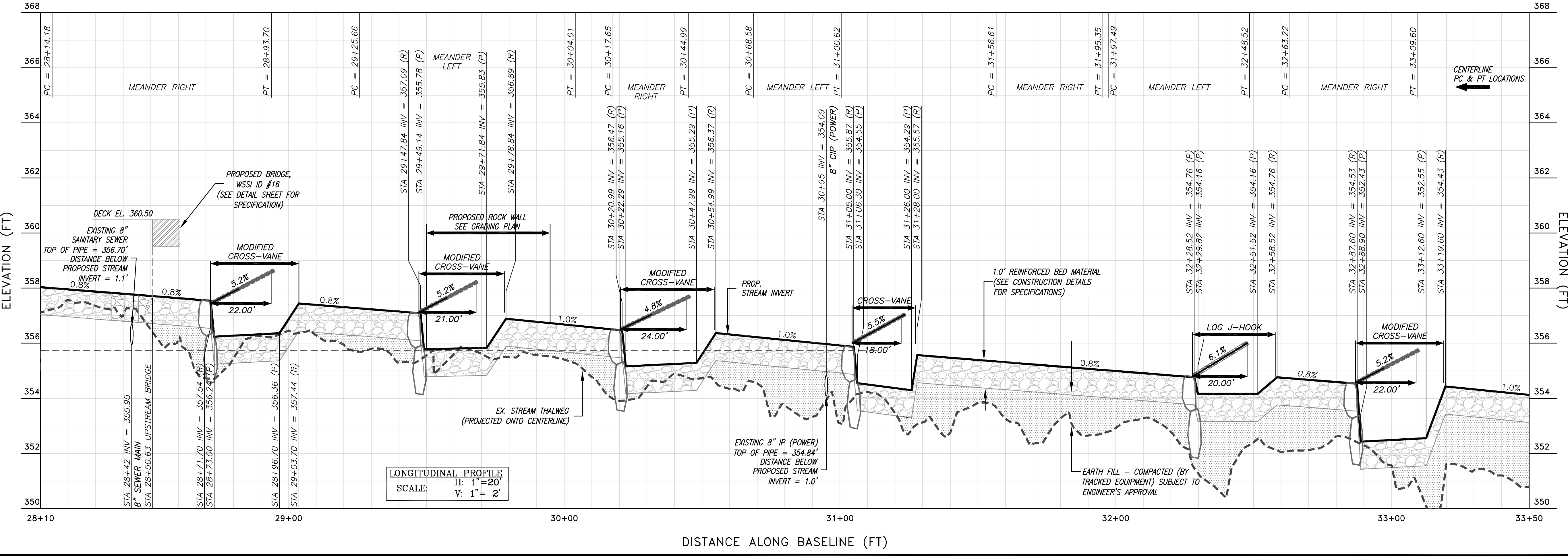


LONGITUDINAL PROFILE – REACH 4A (STA 28+10 TO STA 33+50)



Wetland
 Studies and Solutions, Inc.
 5300 Wellington Branch Drive, Suite 100 • Gainesville, VA 20155
 Phone: 703 679 5600 • Fax: 703 679 5401
 wetland@aol.com

Northern Virginia Stream Restoration Bank
 The Glade - Reach 4A
 Fairfax County, Virginia
 Copyright © 2009 Wetland Studies and Solutions, Inc.

COMMUNITY OF VIRGINIA
 FRANK R. GRAZIANO
 Lic. No. 032099
 PROFESSIONAL ENGINEER

REVISIONS			No.	Date	Description
App.	By	By			

DATE: MAY 2009 SCALE: 1" = 20'

Design	Draft	Approved
KLS	KLS	FRG

Sheet #
6 of 105

Computer File Name:
 L:\2009\2009_VCS\080409\080409.dwg