

REACH 4A LEGEND

---	PROPERTY BOUNDARY	---	ACCESS PATH
---	EXISTING CONTOURS (0.5')	△	NEST
---	EXISTING INFRASTRUCTURE	□	CAVITY
---	FLOODPLAIN EASEMENT	○	SUBSURFACE EROSIONAL FEATURE
---	NONPERENNIAL STREAM (EXISTING TOP OF BANK)	◇	SNAG
---	PERENNIAL STREAM (EXISTING TOP OF BANK)	+	DEN
---	PROPOSED TOP OF BANK	×	TREE TO BE REMOVED
---	PROPOSED CENTERLINE		
---	PROPOSED CONTOURS (0.5')		
---	LOC		LIMITS OF CLEARING

GRAPHIC SCALE
0 15 30 60 120
(IN FEET) 1 inch = 30 feet

STREAM LENGTH:
REACH 4A = 2,417'
TRIBUTARY 1 = 307'
TRIBUTARY 2 = 233'
TOTAL = 2,957'

NORTHERN VIRGINIA STREAM RESTORATION BANK
THE GLADE - REACH 4A

Fairfax County, Virginia

Preliminary Plan

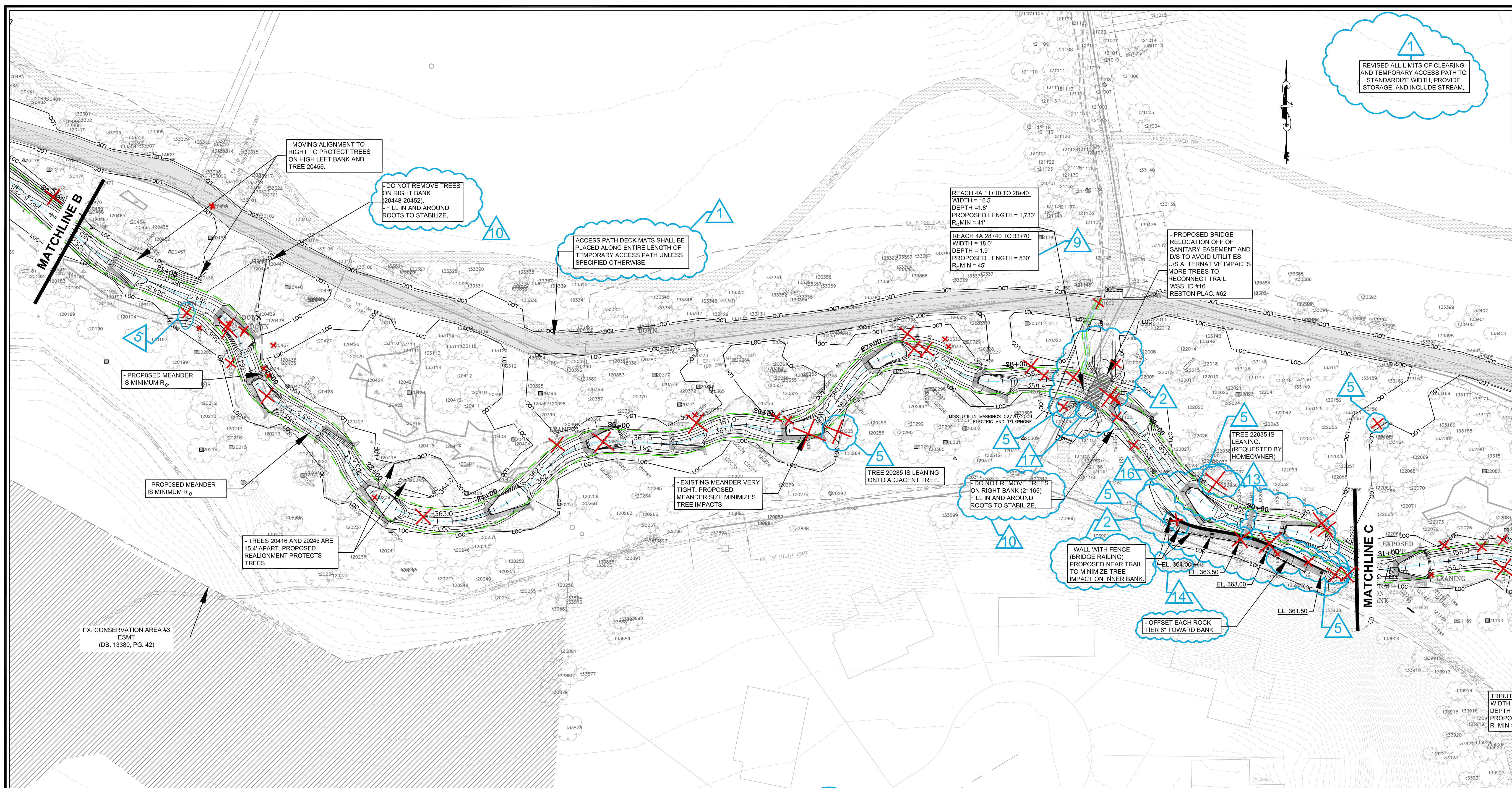
Copyright © 2009 Wetland Studies and Solutions, Inc.

5300 Wellington Branch Drive, Suite 100 • Gainesville, VA 20155
 Phone 703 679 5600 • Fax 703 679 5601
 wetlandstudies.com

REVISIONS		REVISIONS		REVISIONS										
No.	Date	Description	Rev. By	App. By	No.	Date	Description	Rev. By	App. By	No.	Date	Description	Rev. By	App. By
1	3/23/2009	Revised limits of clearing and access path	KLS	FRG	9	3/23/2009	Revised bankfull width and depth	KLS	FRG					
2	3/23/2009	Fine grading around bridges and walls	KLS	FRG	10	3/23/2009	Do not remove identified trees with LOC	KLS	FRG					
5	3/23/2009	Add trees to be removed (20052, 20834, 20070, 20071, 20777, 20558)	KLS	FRG	12	3/31/2009	Survey-located trillium; revised wall to protect	KLS	FRG					
6	3/23/2009	Revised legend and stream lengths	KLS	FRG	13	3/31/2009	Added rock weir to prevent scour	KLS	FRG					
7	3/23/2009	Revised struc. (Trib 1: inlet, outlet, & STA 10+56)	KLS	FRG	14	3/31/2009	Specified batter (as needed); added spot shots	KLS	FRG					
8	3/23/2009	Revised alignment	KLS	FRG	15	3/31/2009	Revised existing topography	KLS	FRG					

DATE: MARCH 7, 2009 SCALE: 1" = 30'

H. D.: VCS NAD 83 V. D.: NGVD 29
 Boundary and Topo Source: WSSI and Fairfax Digital Data
 Design Draft Approved
 KLS KLS FRG
 Sheet #
1 of 3
 Computer File Name:
 L:\2009\2009_VCS_NAD83_VD_NGVD29\1000_Prelim_Plan.dwg



1
REVISED ALL LIMITS OF CLEARING AND TEMPORARY ACCESS PATH TO STANDARDIZE WIDTH, PROVIDE STORAGE, AND INCLUDE STREAM.

10
DO NOT REMOVE TREES ON RIGHT BANK (20449-20452). FILL IN AND AROUND ROOTS TO STABILIZE.

1
ACCESS PATH DECK MATS SHALL BE PLACED ALONG ENTIRE LENGTH OF TEMPORARY ACCESS PATH UNLESS SPECIFIED OTHERWISE.

9
REACH 4A 11+10 TO 28+40. WIDTH = 16.5', DEPTH = 1.8', PROPOSED LENGTH = 1,730', R_c MIN = 41'

9
REACH 4A 28+40 TO 33+70. WIDTH = 18.0', DEPTH = 1.9', PROPOSED LENGTH = 530', R_c MIN = 45'

PROPOSED BRIDGE RELOCATION OFF OF SANITARY EASEMENT AND D/S TO AVOID UTILITIES. U/S ALTERNATIVE IMPACTS MORE TREES TO RECONNECT TRAIL. WSSI ID #16 RESTON PLAC. #62

5
PROPOSED MEANDER IS MINIMUM R_c

PROPOSED MEANDER IS MINIMUM R_c

TREES 20416 AND 20425 ARE 15.4' APART. PROPOSED REALIGNMENT PROTECTS TREES.

EXISTING MEANDER VERY TIGHT. PROPOSED MEANDER SIZE MINIMIZES TREE IMPACTS.

5
TREE 20285 IS LEANING ONTO ADJACENT TREE.

10
DO NOT REMOVE TREES ON RIGHT BANK (21165) FILL IN AND AROUND ROOTS TO STABILIZE.

5
WALL WITH FENCE (BRIDGE RAILING) PROPOSED NEAR TRAIL TO MINIMIZE TREE IMPACT ON INNER BANK.

14
OFFSET EACH ROCK TIER 6' TOWARD BANK.

5
TREE 22035 IS LEANING. (REQUESTED BY HOMEOWNER)

6
STREAM LENGTH:
REACH 4A = 2,417'
TRIBUTARY 1 = 307'
TRIBUTARY 2 = 233'
TOTAL = 2,957'

REACH 4 - PROPOSED BRIDGE DIMENSIONS

REACH NAME	WSSI ID#	RESTON PLAC. #	BANKFULL WIDTH (FT)	EXISTING		PROPOSED	
				LENGTH (FT)	WIDTH (FT)	LENGTH (FT)	WIDTH (FT)
REACH 4A	14	12	16	21	4	NOT TO BE REPLACED	
	15	63	16.5	20	10	26	10
	16	62	18	18	10	28	10
	28	N/A (NEW)	11.5	N/A	N/A	22	10
REACH 4B	17	59	19	19.5	10	28	10
	18	60	6	14	10	NOT TO BE REPLACED	
	19	57	21	18	10	28	10

NOTES:
1. BOTTOM OF BRIDGE DECK TO BE 2 FT HIGHER THAN BANKFULL DEPTH

REACH 4A LEGEND

- PROPERTY BOUNDARY
- EXISTING CONTOURS (0.5')
- EXISTING INFRASTRUCTURE
- FLOODPLAIN EASEMENT
- NONPERENNIAL STREAM (EXISTING TOP OF BANK)
- PERENNIAL STREAM (EXISTING TOP OF BANK)
- PROPOSED TOP OF BANK
- PROPOSED CENTERLINE
- PROPOSED CONTOURS (0.5')
- LOC LIMITS OF CLEARING
- ACCESS PATH
- ▲ NEST
- △ CAVITY
- SUBSURFACE EROSIONAL FEATURE
- ◇ SNAG
- ⊕ DEN
- ✗ TREE TO BE REMOVED

GRAPHIC SCALE
30 0 15 30 60 120
(IN FEET) 1 inch = 30 feet

NORTHERN VIRGINIA STREAM RESTORATION BANK
THE GLADE - REACH 4A

Fairfax County, Virginia

Preliminary Plan

Copyright © 2009 Wetland Studies and Solutions, Inc.



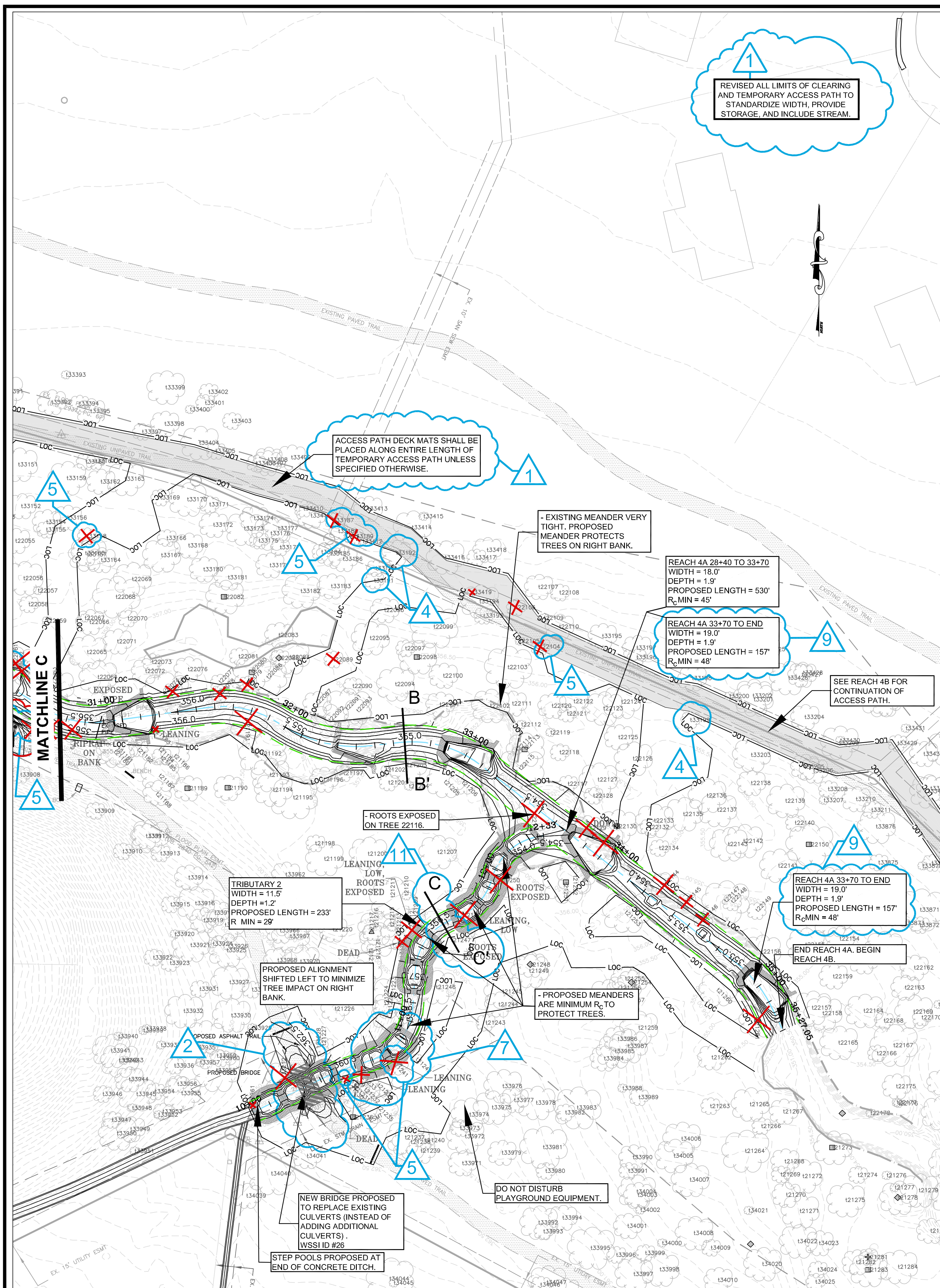
5300 Wellington Branch Drive, Suite 100 • Gainesville, VA 20155
Phone 703 679 5600 • Fax 703 679 5601
wetlandstudies.com

REVISIONS

No.	Date	Description	Rev. By	App. By	No.	Date	Description	Rev. By	App. By
1	3/23/2009	Revised Limits of Clearing and Access Path	KLS	FRG	10	3/23/2009	Do not remove identified trees in LOC	KLS	FRG
2	3/23/2009	Fine grading around bridges and walls.	KLS	FRG	13	3/31/2009	Added rock weir to prevent scour	KLS	FRG
3	3/23/2009	Added Bridge Table	KLS	FRG	14	3/31/2009	Specified batter (as needed); added spot shots	KLS	FRG
5	3/23/2009	Added trees to be removed (20285, 22035, 33158, 20201, 20307, 21171, 21174, 21175, 21177)	KLS	FRG	16	3/31/2009	Revised wall and grading to add bkf bench	KLS	FRG
6	3/23/2009	Revised legend and stream lengths	KLS	FRG	17	3/31/2009	Revised bridge grading on right bank	KLS	FRG
9	3/23/2009	Revised bankfull width and depth.	KLS	FRG					

DATE: MARCH 7, 2009 SCALE: 1" = 30'

H. D.: VCS NAD 83 V. D.: NGVD 29
Boundary and Topo Source: WSSI and Fairfax Digital Data
Design Draft Approved
KLS KLS FRG
Sheet #
2 of 3
Computer File Name: E:\2009\2009_VCS_NAD83_VD_NGVD29_Prelim_Plan.dwg



NORTHERN VIRGINIA STREAM RESTORATION BANK
THE GLADE - REACH 4A

Fairfax County, Virginia

Preliminary Plan

Copyright © 2009 Wetland Studies and Solutions, Inc.

Wetland Studies and Solutions, Inc.
5300 Wellington Branch Drive, Suite 100 • Gainesville, VA 20155
Phone 703 679 5600 • Fax 703 679 5601
wetlandstudies.com

REVISIONS									
No.	Date	Description	Rev. By	App. By	No.	Date	Description	Rev. By	App. By
1	3/23/2009	Revised Limits of Clearing and Access Path	KLS	FRG	7	3/23/2009	Revised Structure (Trib 2, STA 10+62)	KLS	FRG
2	3/23/2009	Fine grading around bridges and walls.	KLS	FRG	9	3/23/2009	Revised bankfull width and depth	KLS	FRG
4	3/23/2009	Trees to be saved (33191, 33192, 33199)	KLS	FRG	11	3/23/2009	Additional Cross Section (Trib. 2, STA 11+58)	KLS	FRG
5	3/23/2009	Added trees to be removed (33187, 33189, 21229, 21241, 22104, 33158)	KLS	FRG	19	3/31/2009	Added Missing Revision Cloud	KLS	FRG
6	3/23/2009	Revised legend and stream lengths.	KLS	FRG					

DATE: MARCH 7, 2009 SCALE: 1" = 30'

Design	Draft	Approved
KLS	KLS	FRG

Boundary and Topo Source: WSSI and Fairfax Digital Data

Sheet # **3 of 3**

Computer File Name: L:\2009\2009_11_01\ENR\ENR040310\Final_Plan_SFT.dwg