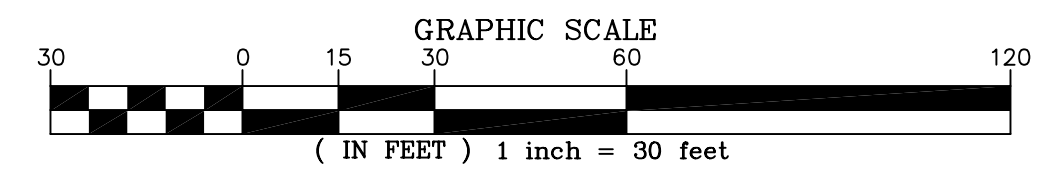


**REACH 4A LEGEND**

- PROPERTY BOUNDARY
- EXISTING CONTOURS (0.5')
- EXISTING INFRASTRUCTURE
- NONPERENNIAL STREAM
- PERENNIAL STREAM
- FLOODPLAIN EASEMENT
- PROPOSED CONTOURS (0.5')
- PROPOSED BANKFULL
- LIMITS OF CLEARING FOR ACCESS
- ACCESS PATH
- NEST
- CAVITY
- SUBSURFACE EROSIONAL FEATURE
- SNAG
- DEN
- TO BE REMOVED
- CONSERVATION EASEMENT



**STREAM LENGTH:**  
**REACH 4A = 2,417'**  
**TRIBUTARY 1 = 292'**  
**TRIBUTARY 2 = 247'**

TRIBUTARY 1  
 WIDTH = 5.5'  
 DEPTH = 0.7'  
 PROPOSED LENGTH = 292'  
 R<sub>c</sub> MIN = 14'

REACH 4A 11+10 TO 28+40  
 WIDTH = 16.5'  
 DEPTH = 1.8'  
 PROPOSED LENGTH = 1,730'  
 R<sub>c</sub> MIN = 41'

**NORTHERN VIRGINIA STREAM RESTORATION BANK**  
**THE GLADE - REACH 4A**

Fairfax County, Virginia

**Preliminary Plan**

Copyright © 2009 Wetland Studies and Solutions, Inc.

**Wetland**  
 Studies and Solutions, Inc.  
 5300 Wellington Branch Drive, Suite 100 • Gainesville, VA 20155  
 Phone 703 679 5600 • Fax 703 679 5601  
 wetlandstudies.com

REVISIONS					Rev. By	App. By	Description
No.	Date	Description	Rev. By	App. By			

H. D.: VCS NAD 83 V. D.: NGVD 29  
 Boundary and Topo Source:  
 WSSI and Fairfax Digital Data

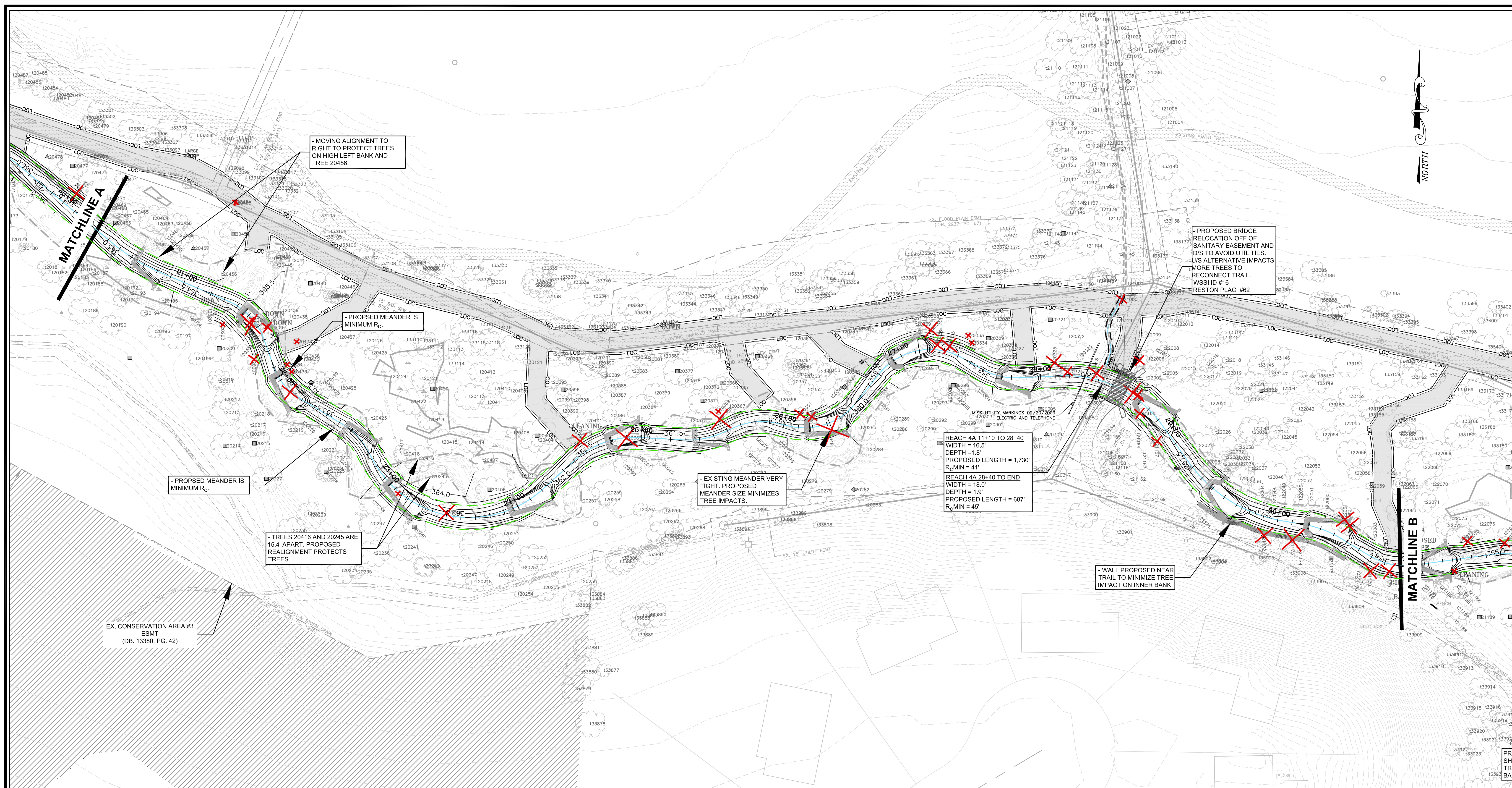
Design	Draft	Approved
KLS	KLS	FRG

Sheet #  
**1 of 3**

Computer File Name:  
 L:\2009\2009 ACAD\ENGR\PREL\0901.Plotter

DATE: MARCH 7, 2009      SCALE: 1" = 30'





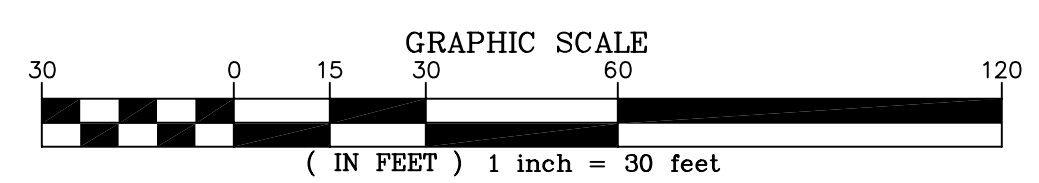
**STREAM LENGTH:  
REACH 4A = 2,417'  
TRIBUTARY 1 = 292'  
TRIBUTARY 2 = 247'**

REACH 4 - PROPOSED BRIDGE DIMENSIONS							
REACH NAME	WSSI ID#	RESTON PLAC. #	BANKFULL WIDTH (FT)	EXISTING		PROPOSED	
				LENGTH (FT)	WIDTH (FT)	LENGTH (FT)	WIDTH (FT)
REACH 4A	14	12	16	21	4	NOT TO BE REPLACED	
	15	63	16.5	20	10	28	10
	16	62	18	18	10	28	10
	28	N/A (NEW)	12.5	N/A	N/A	22	10
REACH 4B	17	59	19	19.5	10	28	10
	18	60	6	14	10	NOT TO BE REPLACED	
	19	57	21	18	10	28	10

NOTES:  
1. BOTTOM OF BRIDGE DECK TO BE 2 FT HIGHER THAN BANKFULL DEPTH

**REACH 4A LEGEND**

- PROPERTY BOUNDARY
- EXISTING CONTOURS (0.5')
- EXISTING INFRASTRUCTURE
- NONPERENNIAL STREAM
- PERENNIAL STREAM
- FLOODPLAIN EASEMENT
- PROPOSED CONTOURS (0.5')
- LIMITS OF CLEARING FOR ACCESS
- ACCESS PATH
- ▲ NEST
- CAVITY
- SUBSURFACE EROSIONAL FEATURE
- ◇ SNAG
- ⊕ DEN
- ✗ TO BE REMOVED
- ▨ CONSERVATION EASEMENT



**NORTHERN VIRGINIA STREAM RESTORATION BANK  
THE GLADE - REACH 4A**  
Fairfax County, Virginia

**Preliminary Plan**

Copyright © 2009 Wetland Studies and Solutions, Inc.

5300 Wellington Branch Drive, Suite 100 • Gainesville, VA 20155  
Phone 703 679 5600 • Fax 703 679 5601  
wetlandstudies.com

REVISIONS				Rev. By	App. By
No.	Date	Description			

H. D.: VCS NAD 83 V. D.: NGVD 29  
Boundary and Topo Source:  
WSSI and Fairfax Digital Data

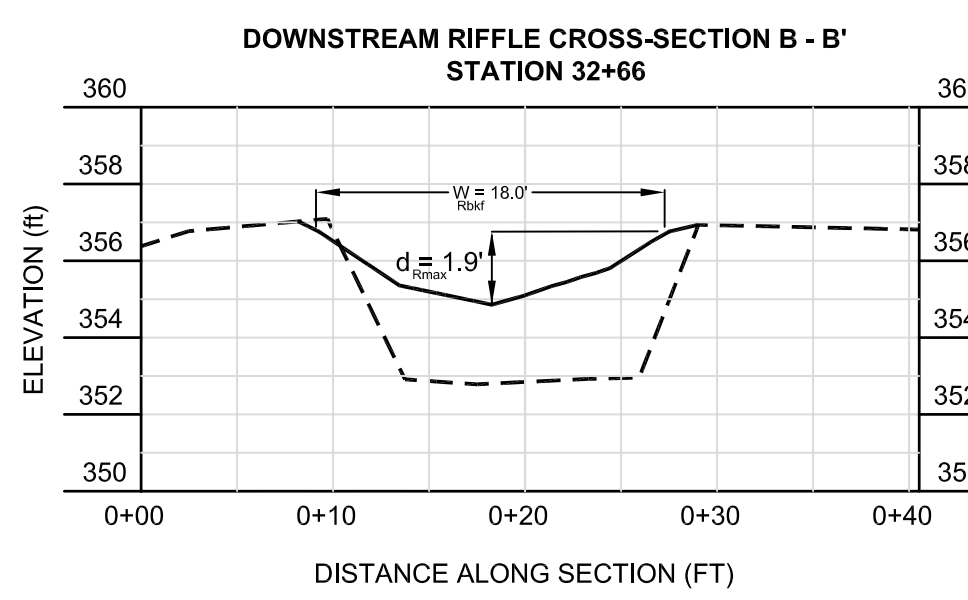
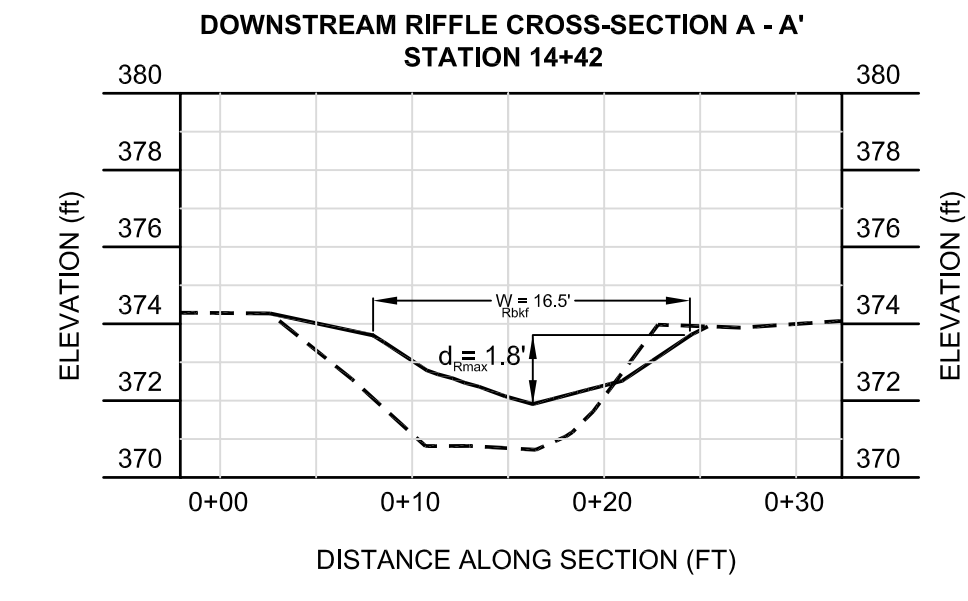
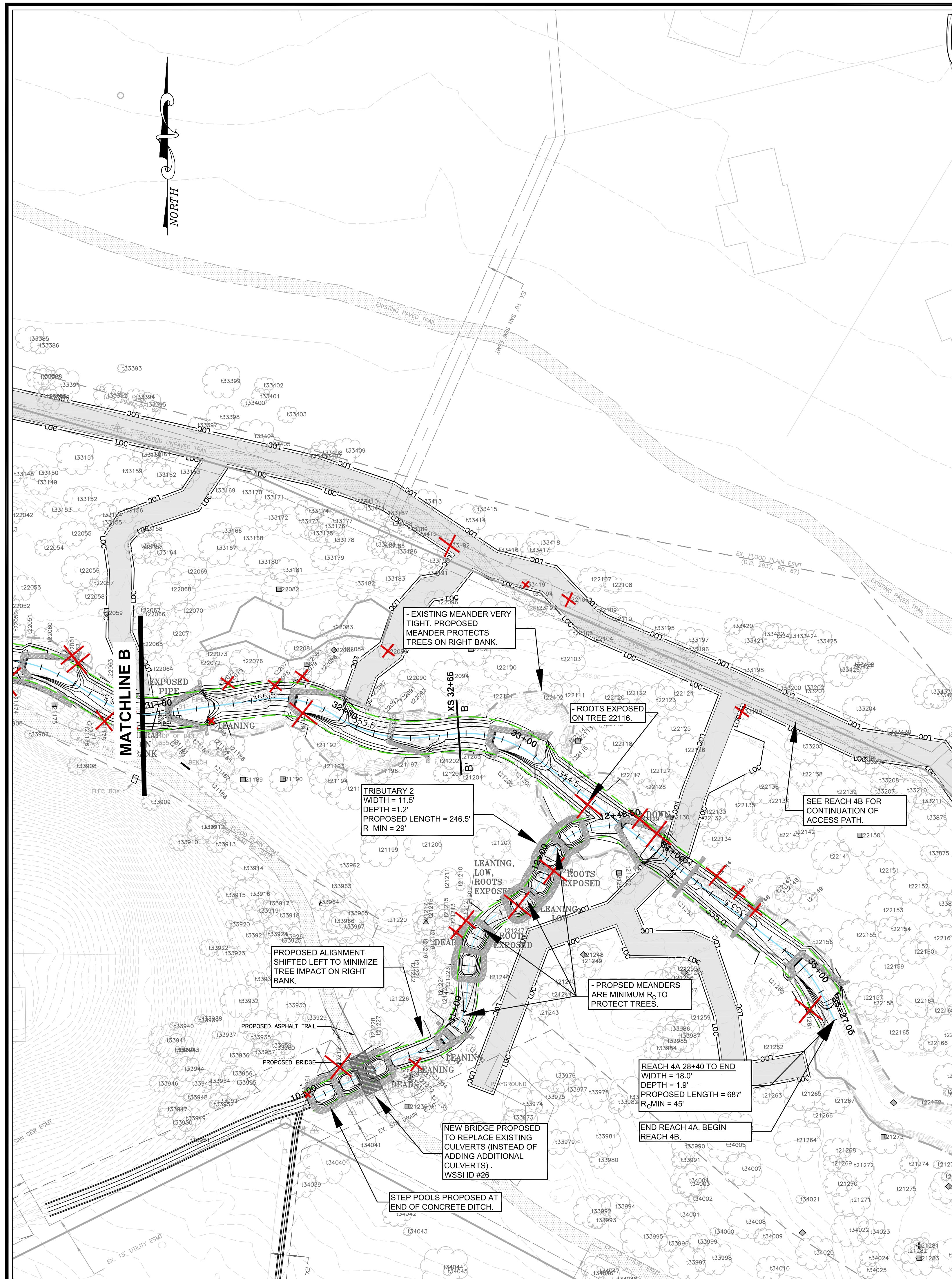
Design	Draft	Approved
KLS	KLS	FRG

Sheet #  
**2 of 3**

Computer File Name:  
L:\2009\2009 ACAD\2009\2009 Preliminary Plan.dwg

DATE: MARCH 7, 2009 SCALE: 1" = 30'





**CROSS SECTION LEGEND**

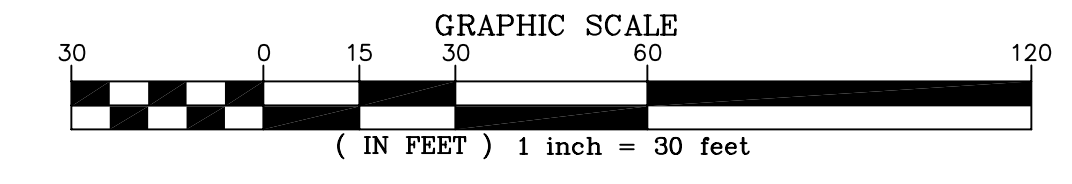
—	PROPOSED STREAM
- - -	EXISTING STREAM

SCALE: H/V: 2:1

**REACH 4A LEGEND**

---	PROPERTY BOUNDARY	△	NEST
- - -	EXISTING CONTOURS (0.5')	□	CAVITY
- - -	EXISTING INFRASTRUCTURE	○	SUBSURFACE EROSIONAL FEATURE
- - -	NONPERENNIAL STREAM	○	SNAG
- - -	PERENNIAL STREAM	◇	DEN
- - -	FLOODPLAIN EASEMENT	+	TO BE REMOVED
- - -	PROPOSED CONTOURS (0.5')	+	TO BE REMOVED
---	PROPOSED BANKFULL	+	TO BE REMOVED
---	LIMITS OF CLEARING FOR ACCESS	▨	CONSERVATION EASEMENT
---	ACCESS PATH	▨	CONSERVATION EASEMENT

**STREAM LENGTH:  
REACH 4A = 2,417'  
TRIBUTARY 1 = 292'  
TRIBUTARY 2 = 247'**



**NORTHERN VIRGINIA STREAM RESTORATION BANK  
THE GLADE - REACH 4A**

Fairfax County, Virginia

**Preliminary Plan**

Copyright © 2009 Wetland Studies and Solutions, Inc.



5300 Wellington Branch Drive, Suite 100 • Gainesville, VA 20155  
Phone 703 679 5600 • Fax 703 679 5601  
wetlandstudies.com

**REVISIONS**

No.	Date	Description	Rev. By	App. By

H. D.: VCS NAD 83 V. D.: NGVD 29

Boundary and Topo Source:  
WSSI and Fairfax Digital Data

Design	Draft	Approved
KLS	KLS	FRG

Sheet #  
**3 of 3**

Computer File Name:  
L:\2009\2009A\ACADEM\ENGR\Preliminary\_Plan.dwg

DATE: MARCH 7, 2009 SCALE: 1" = 30'