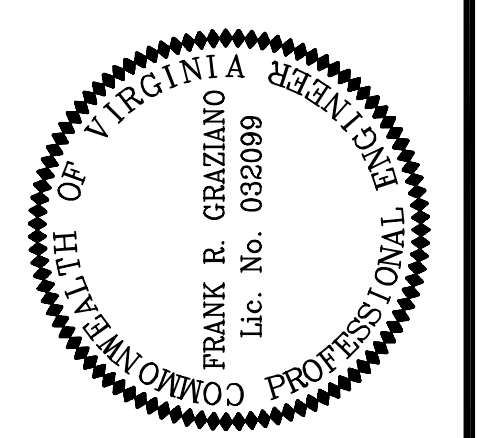

 Wetland
 Studies and Solutions, Inc.
 5300 Wellington Branch Drive, Suite 100 • Gainesville, VA 20155
 Phone: 703 679 5600 • Fax: 703 679 5601
 wetlandstudies.com

Northern Virginia Stream Restoration Bank
 The Glade - Reach 2
 Fairfax County, Virginia
 Overall Site Exhibit



REVISIONS		App. By	Rev. By
No.	Date	Description	
1	12/08	REVISED LOG/TEMP. ACCESS PATH	
2	12/08	ALIGNMENT, PROFILE, & STRUCTURES	
3	12/08	BRIDGE DECK ELEVATIONS	
4	12/08	ADDITIONAL GRADING NOTES	
5	12/08	REMOVED TRIB 2 AND UPSTREAM TRIB 1	

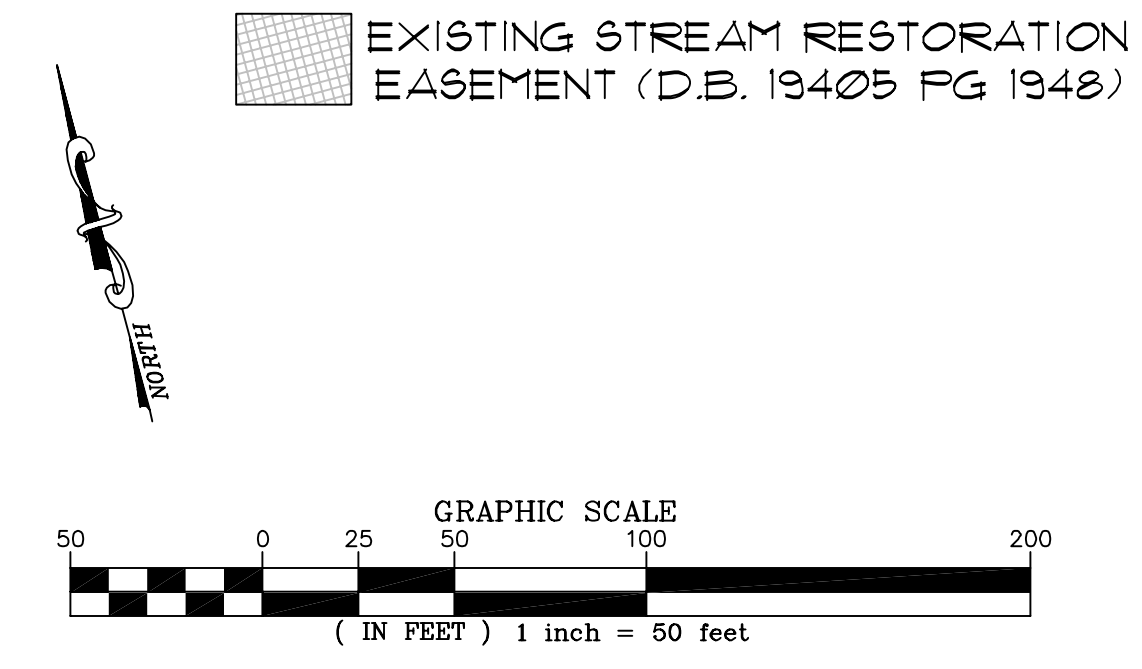
DATE: OCTOBER, 2008 SCALE: 1"=50'

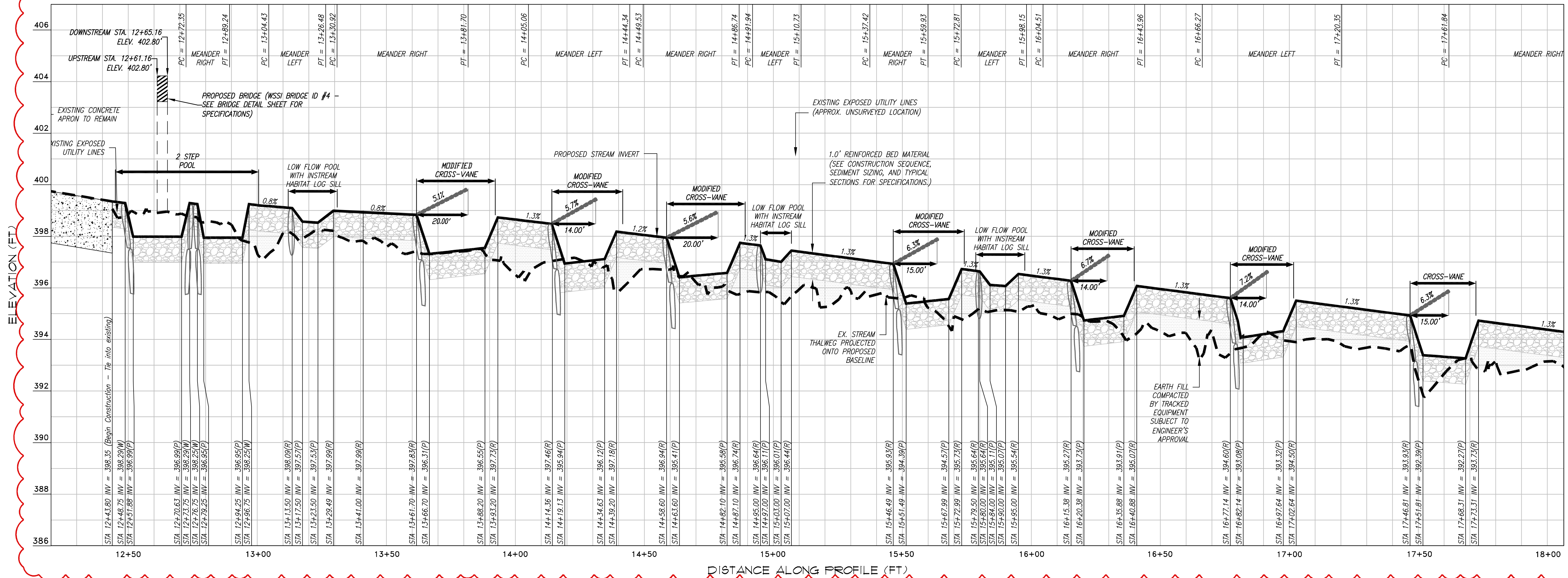
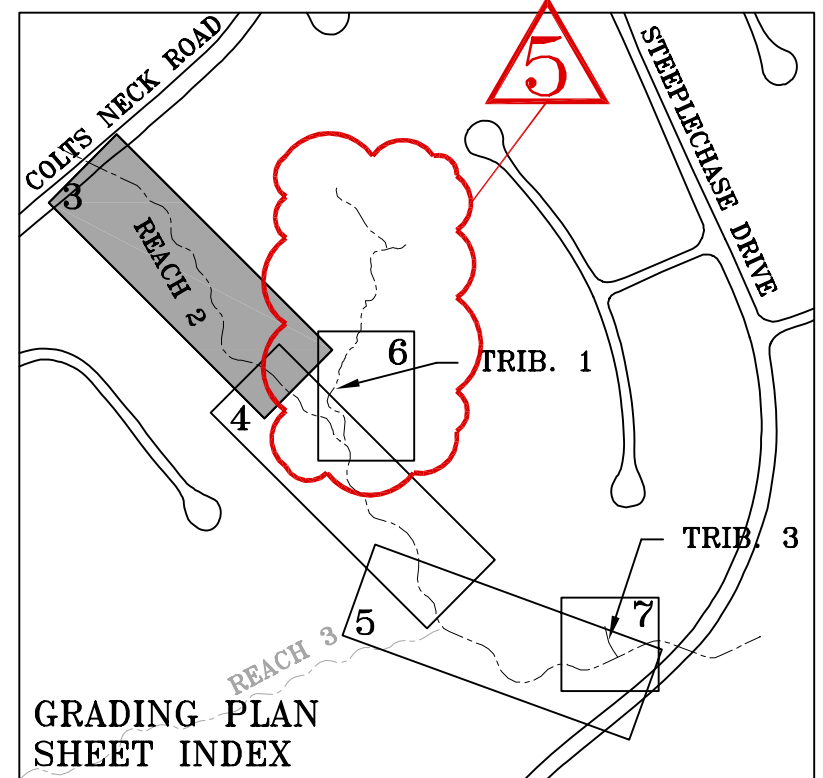
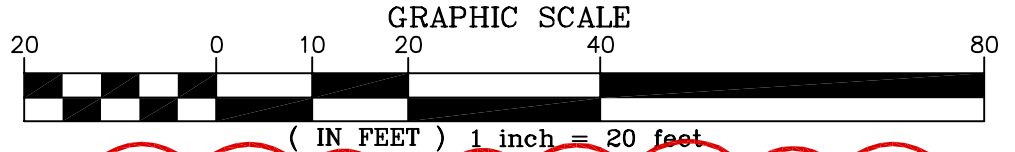
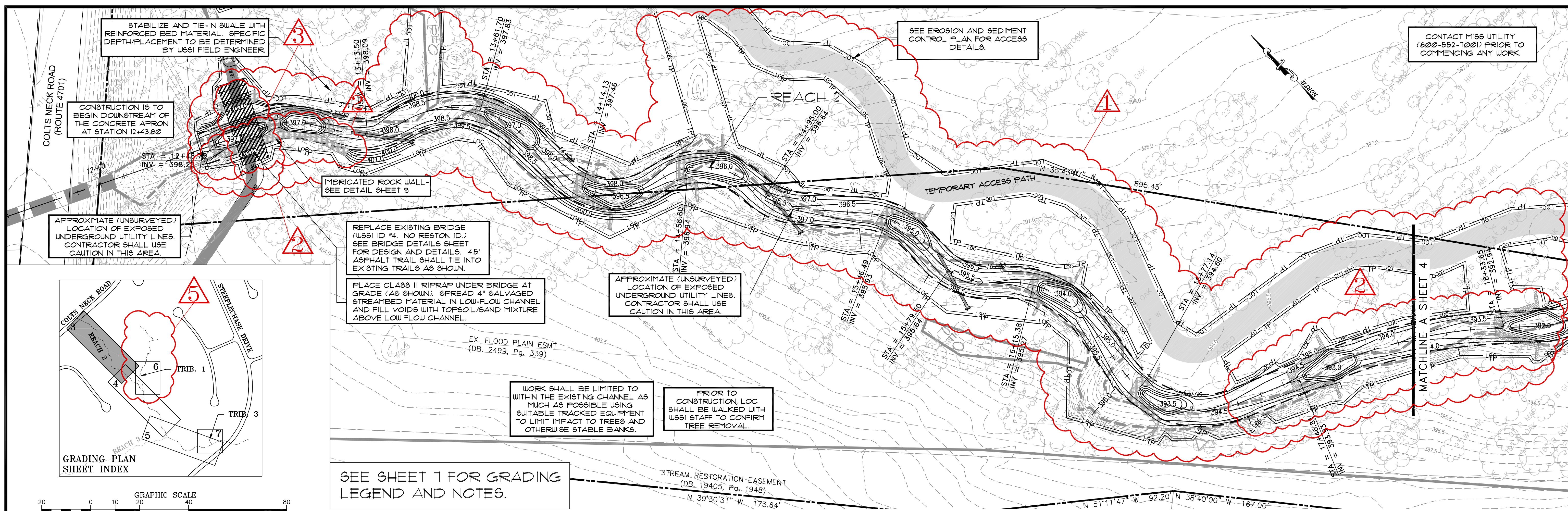
Horizontal Datum: VCS NAD 83
 Vertical Datum: NGVD 29
 Boundary and Topo Source: WSSI and Fairfax Digital Data

Design	Draft	Approved
JBP	NAS	FRG

Sheet #
 2 of 63

Computer File Name:
 1:1009620102-CAD0404ENR-IMP-Plan-Overall_Site_Exhibit_01.dwg

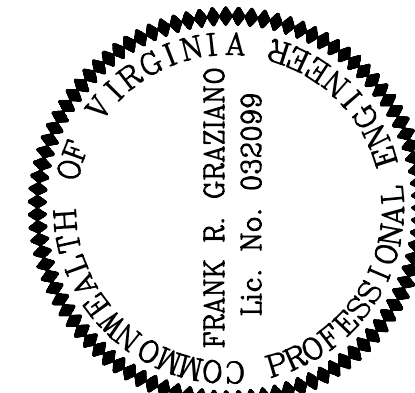




SEE SHEET 1 FOR PROFILE LEGEND AND NOTES.

LONGITUDINAL PROFILE
H: 1" = 20'
V: 1" = 2'

Northern Virginia Stream Restoration Bank
The Glade - Reach 2
Fairfax County, Virginia



No.	Date	Description
1	12/08	REVISED LOC./TEMP. ACCESS PATH
2	12/08	ALIGNMENT, PROFILE, & STRUCTURES
3	12/08	BRIDGE DECK ELEVATIONS
5	12/08	REMOVED TRIB 2 AND UPSTREAM TRIB 1

DATE: OCTOBER, 2008
SCALE: 1" = 20'

Horizontal Datum: VCS NAD 83
Vertical Datum: NGVD 29
Boundary and Topo Source: W891 and Fairfax Digital Data

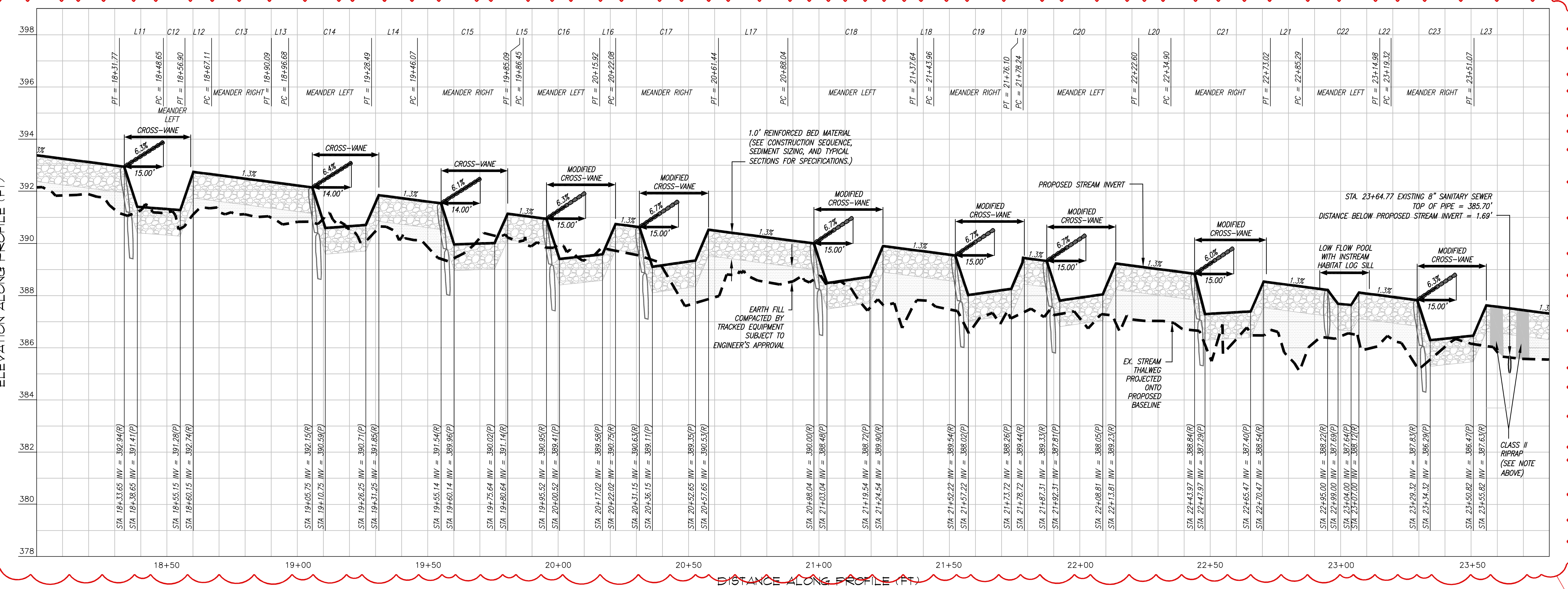
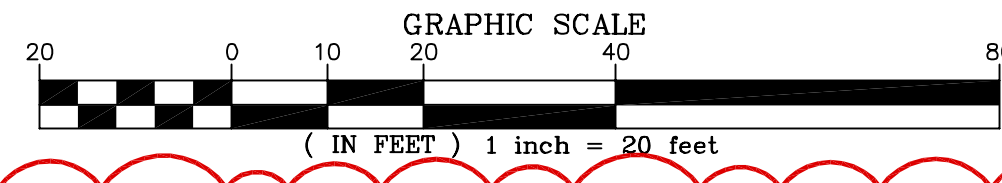
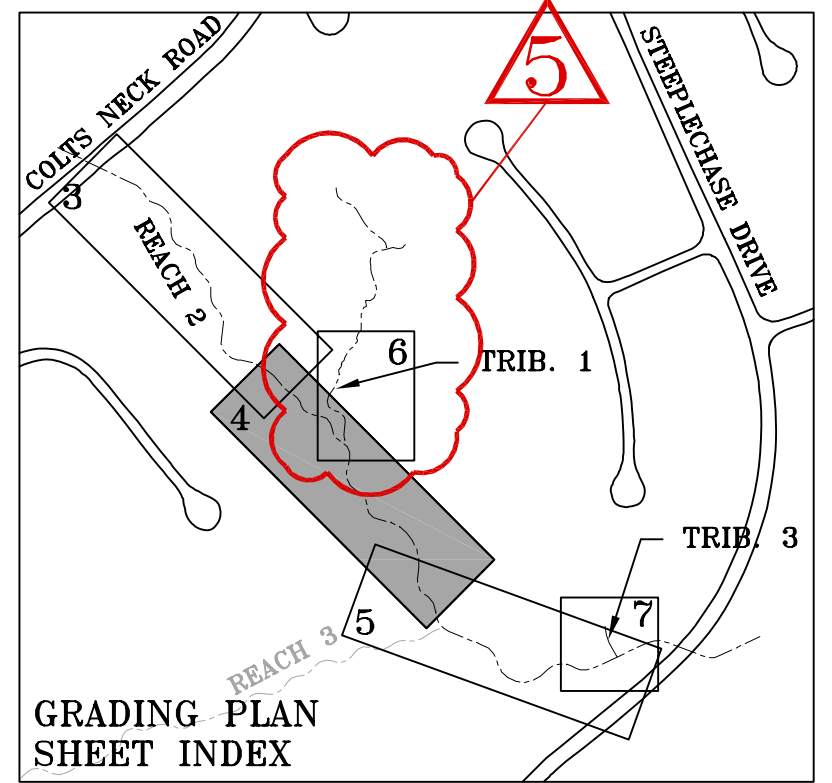
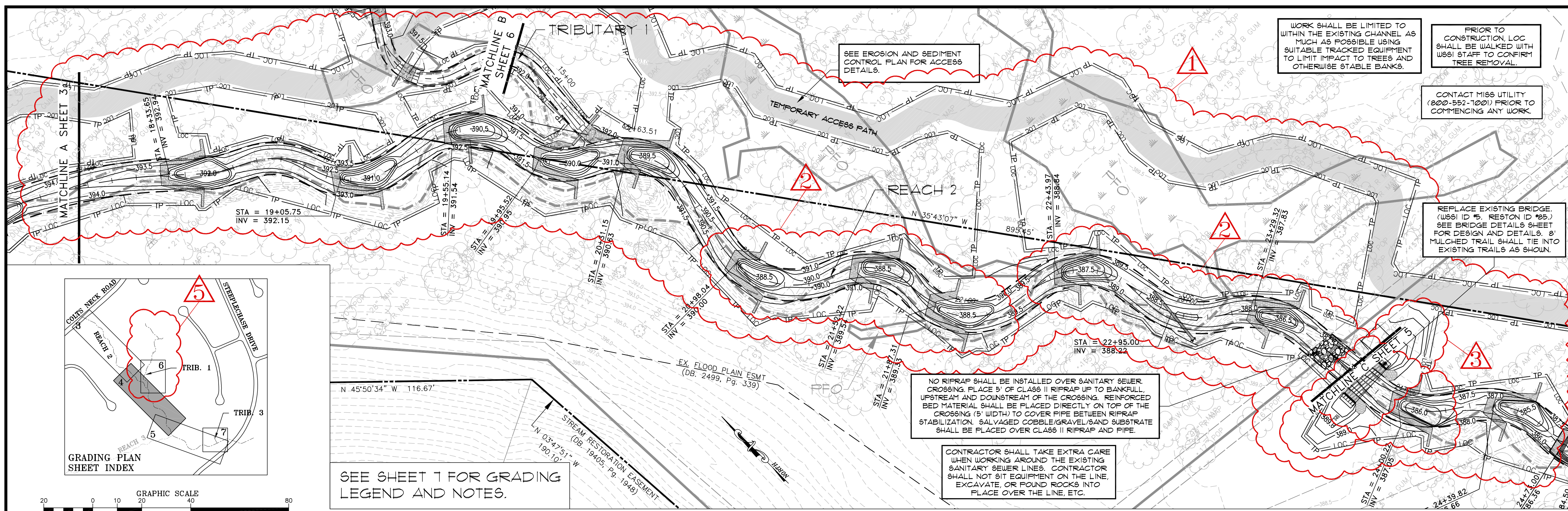
Design	Draft	Approved
JBP	JBP	FRG

Sheet #
3 of 63

Computer File Name:
I:\3096\2002\CAD\ENR\08\PLAN\GRADING\PLAN & PROFILE.DWG

Wetland
Soils and Solutions, Inc.
5300 Wellington Branch Drive, Suite 100 • Gainesville, VA 20155
Phone 703 679 5600 • Fax 703 679 5601
wetland@aol.com

Copyright © 2009 Wetland Soils and Solutions, Inc.



SEE SHEET 1 FOR PROFILE LEGEND AND NOTES.

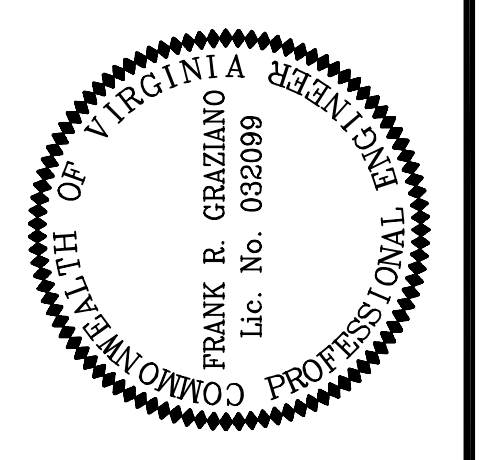
LONGITUDINAL PROFILE
H: 1" = 20'
SCALE: V: 1" = 2'

Northern Virginia Stream Restoration Bank
The Glade - Reach 2
Fairfax County, Virginia

Wetland
Soils and Situations, Inc.
5300 Wellington Branch Drive, Suite 100 • Gainesville, VA 20155
Phone: 703 679 5600 • Fax: 703 679 5601
wetland@wsi.com

Copyright © 2009 Wetland Studies and Solutions, Inc.

Grading Plan and Longitudinal Profile (cont'd)



REVISIONS	
No.	Description
1	12/08 REVISED LOC/TEMP. ACCESS PATH
2	12/08 ALIGNMENT, PROFILE, & STRUCTURES
3	12/08 BRIDGE DECK ELEVATIONS
5	12/08 REMOVED TRIB 2 AND UPSTREAM TRIB 1

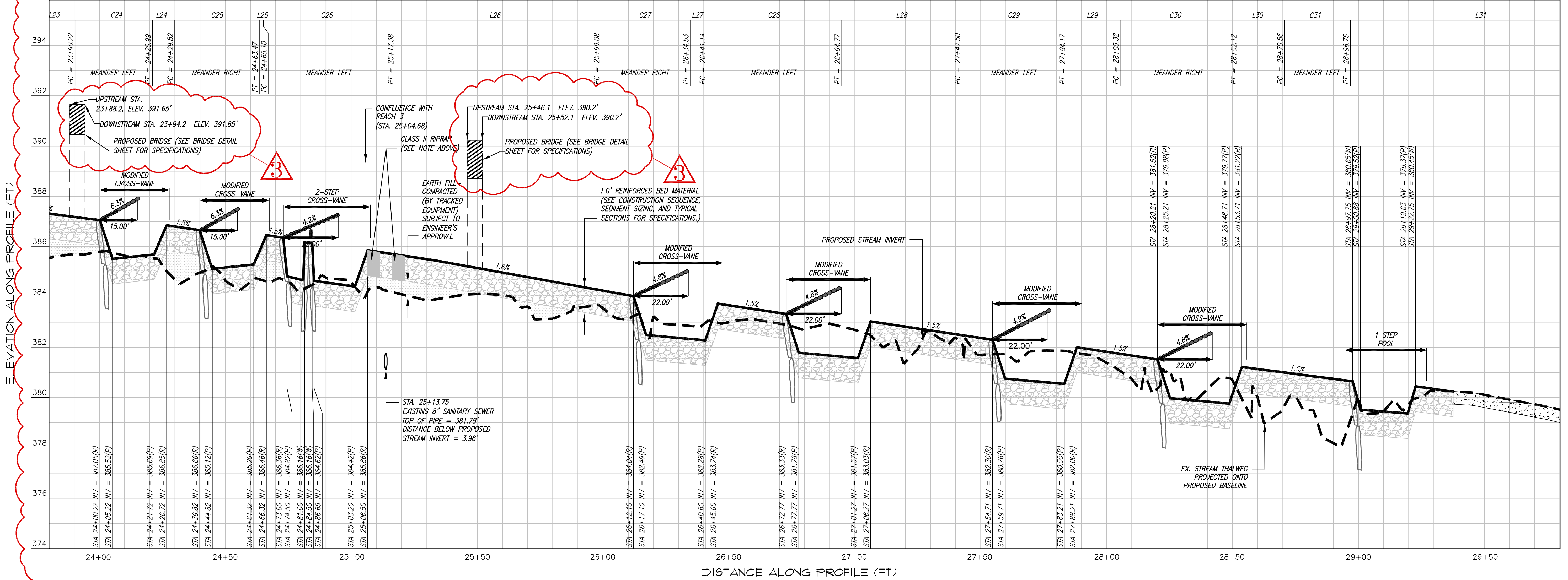
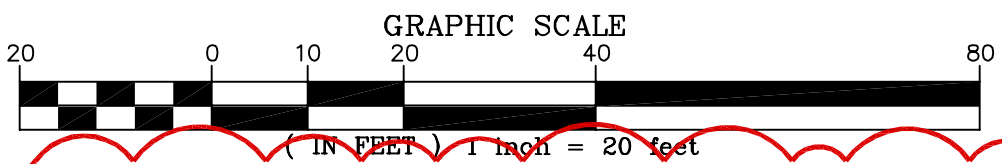
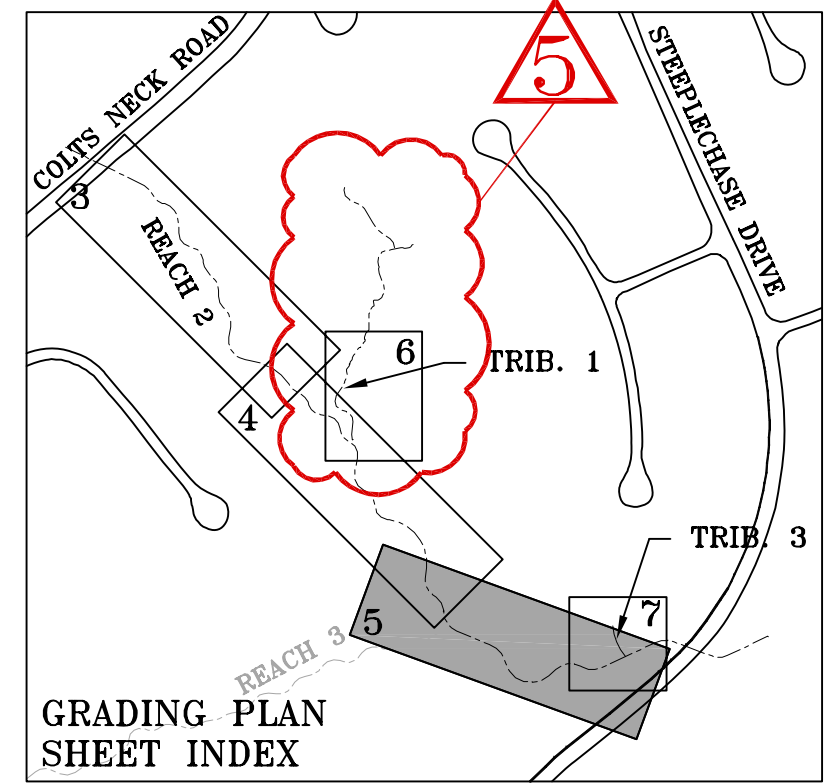
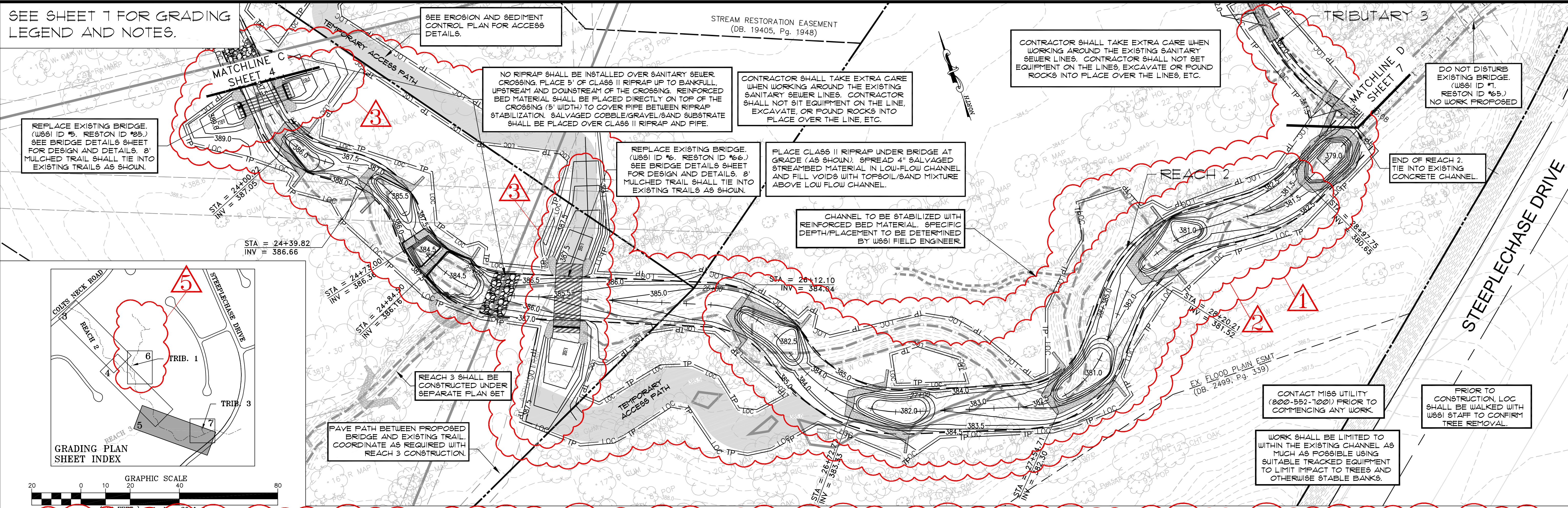
Horizontal Datum: VCS NAD 83
Vertical Datum: NGVD 29
Boundary and Topo Source: WSSI and Fairfax Digital Data

Design	Draft	Approved
JBP	JBP	FRG

Sheet #
4 of 63

Computer File Name:
1:30062010220404ENR01.dwg
GRADING PLAN & PROFILE (CONT'D)

SEE SHEET 1 FOR GRADING LEGEND AND NOTES.



SEE SHEET 1 FOR PROFILE LEGEND AND NOTES.

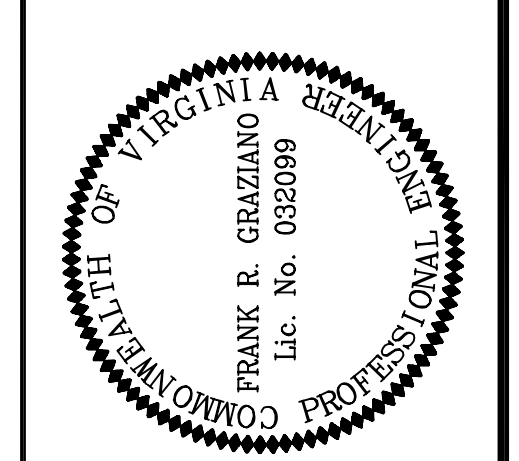
LONGITUDINAL PROFILE
H: 1" = 20'
V: 1" = 2'

Wetland
Studies and Solutions, Inc.
5300 Wellington Branch Drive, Suite 100 • Gainesville, VA 20155
Phone: 703 679 5600 • Fax: 703 679 5601
wetlandstudies.com

Northern Virginia Stream Restoration Bank
The Glade - Reach 2
Fairfax County, Virginia

Grading Plan and Longitudinal Profile (cont'd)

Copyright © 2009 Wetland Studies and Solutions, Inc.



REVISIONS

No.	Date	Description	App. By	Rev. By
1	12/08	REVISED LOC/TEMP. ACCESS PATH		
2	12/08	ALIGNMENT, PROFILE, & STRUCTURES		
3	12/08	BRIDGE DECK ELEVATIONS		
5	12/08	REMOVED TRIB 2 AND UPSTREAM TRIB 1		

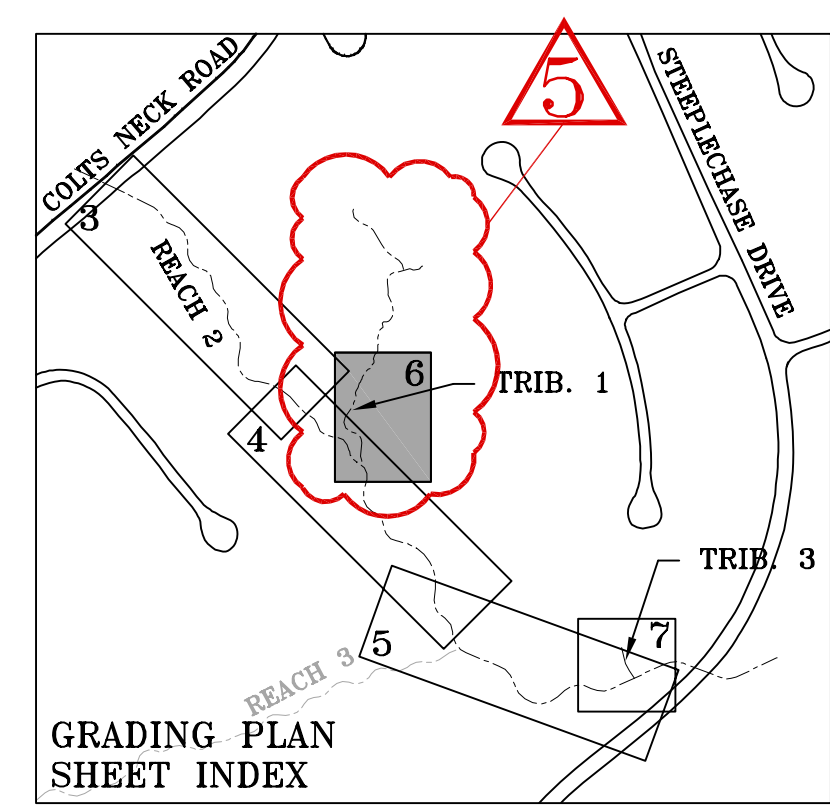
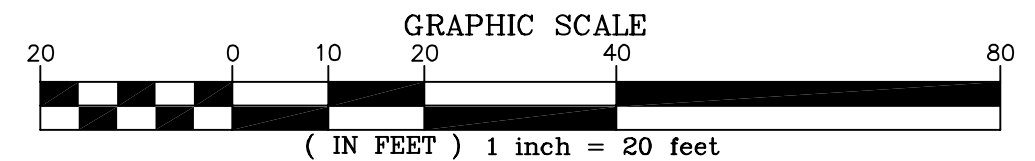
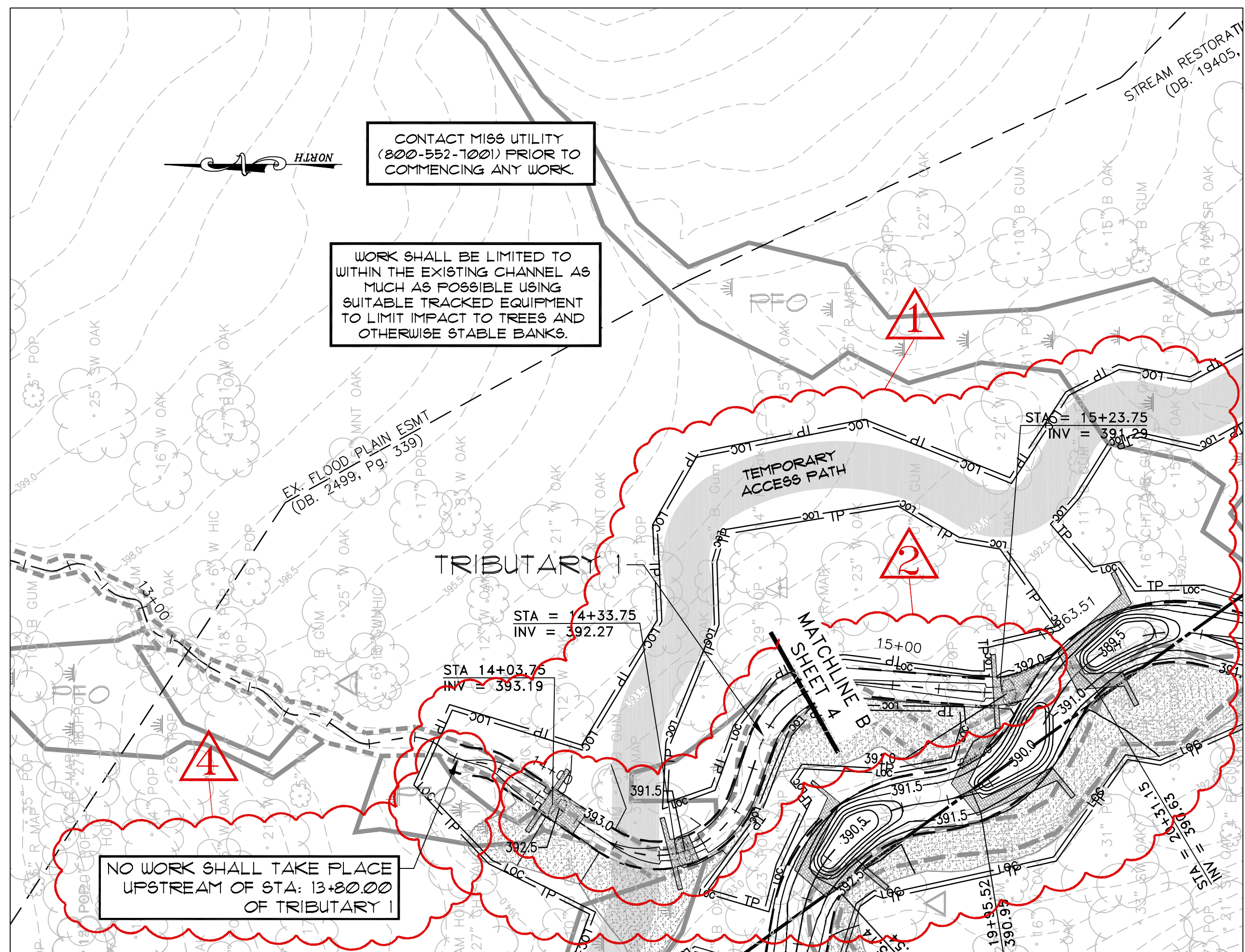
DATE: OCTOBER, 2008 SCALE: 1"=20'

Horizontal Datum: VCS NAD 83
Vertical Datum: NGVD 29
Boundary and Topo Source: WSSI and Fairfax Digital Data

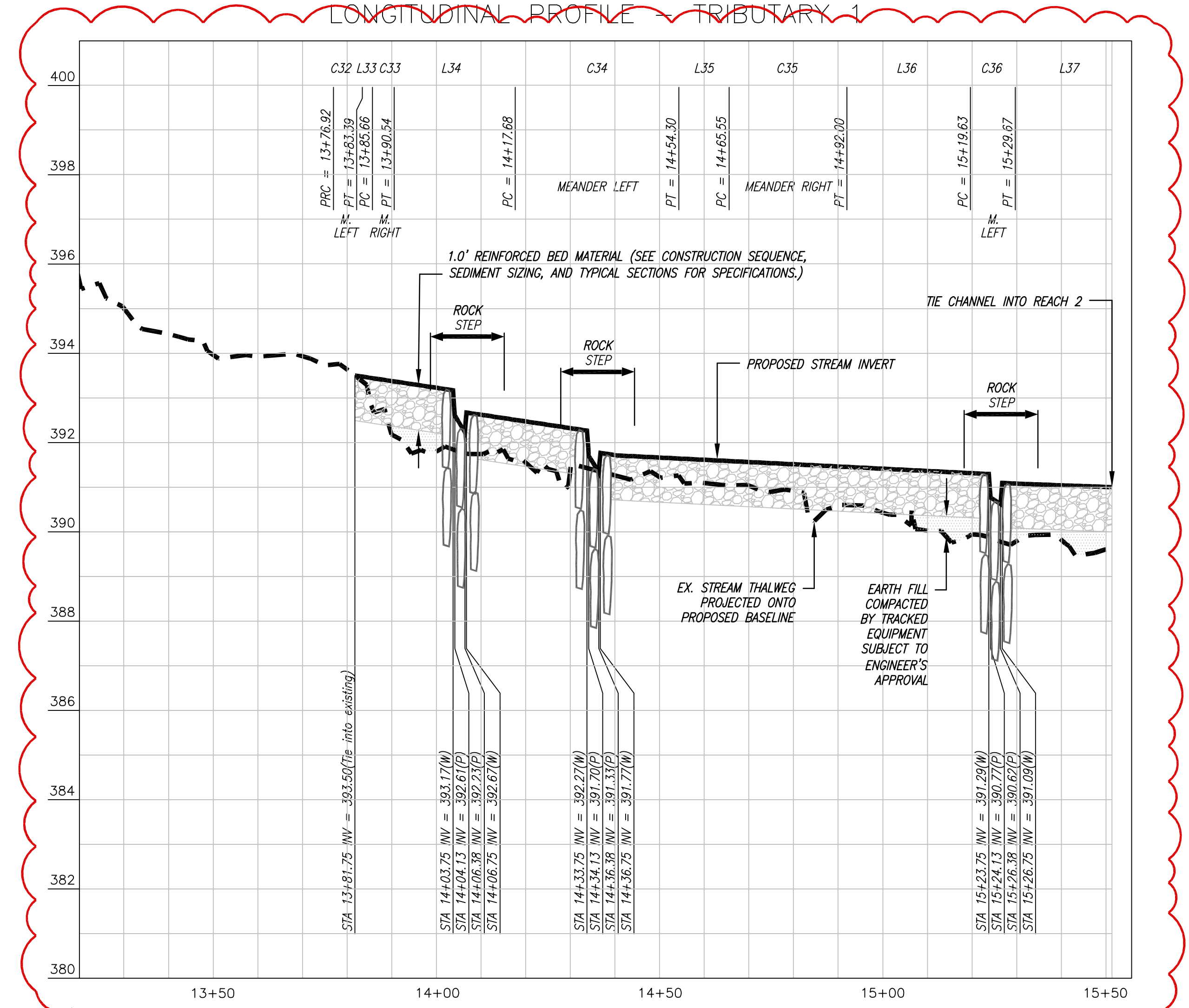
Design	Draft	Approved
JBP	JBP	FRG

Sheet #
5 of 63

Computer File Name:
1:2009062012 CA0405ENR (IMP) PLAN GRADING PLAN & PROFILE (LONG)

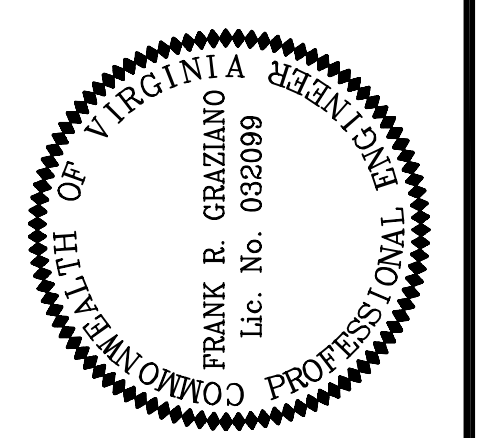


SEE SHEET 1 FOR GRADING LEGEND AND NOTES.



LONGITUDINAL PROFILE
SCALE: H: 1" = 20'
V: 1" = 2'

Northern Virginia Stream Restoration Bank
The Glade - Reach 2
Fairfax County, Virginia



REVISIONS	
No.	Description
1	12/08 REVISED LOG/TEMP. ACCESS PATH
2	12/08 ALIGNMENT, PROFILE, & STRUCTURES
4	12/08 ADDITIONAL GRADING NOTES
5	12/08 REMOVED TRIB 2 AND UPSTREAM TRIB 1

Horizontal Datum: VCS NAD 83
Vertical Datum: NGVD 29
Boundary and Topo Source: WSSI and Fairfax Digital Data

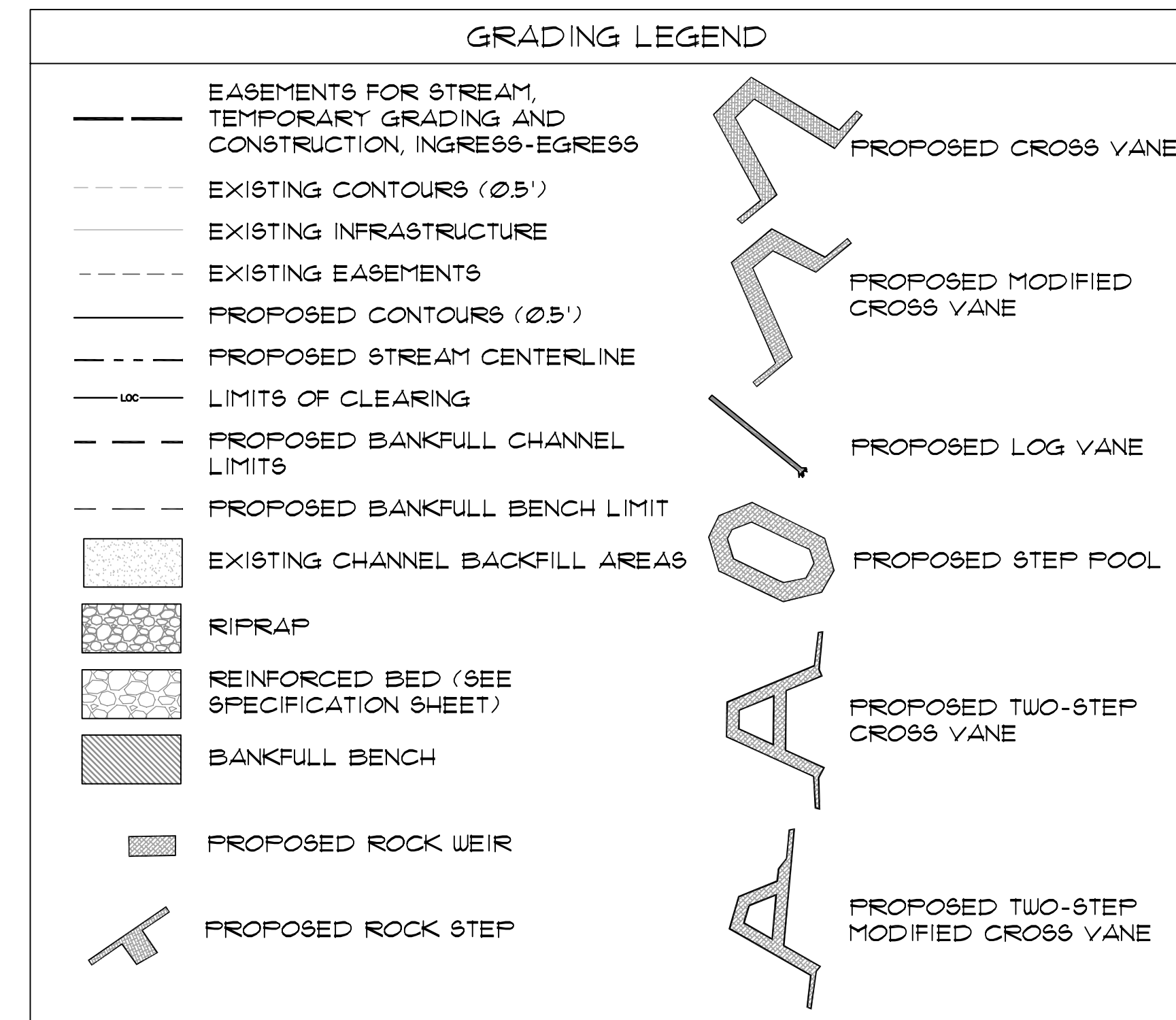
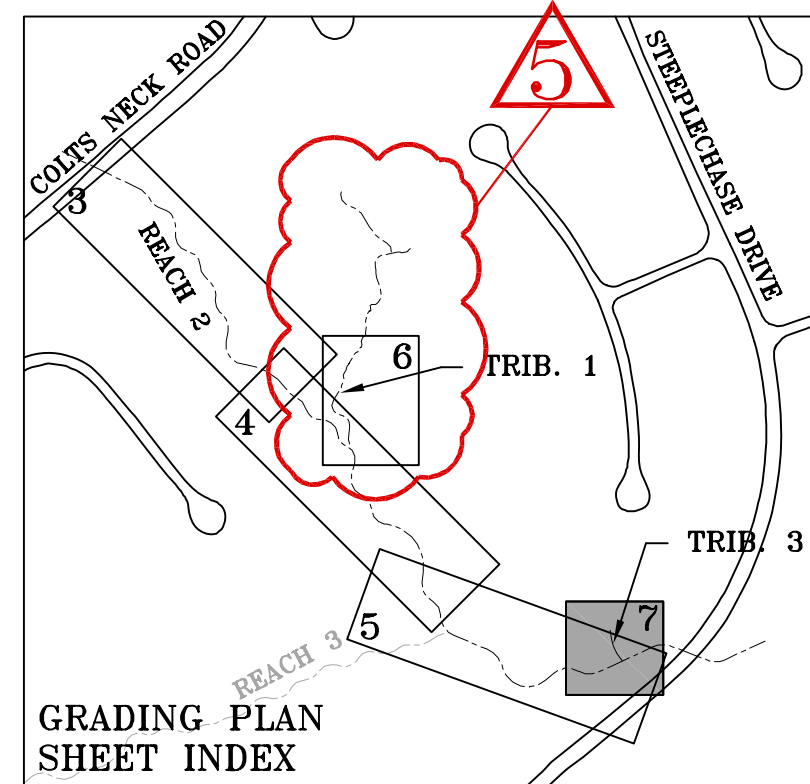
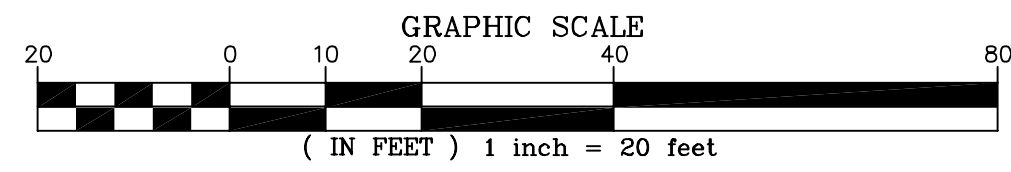
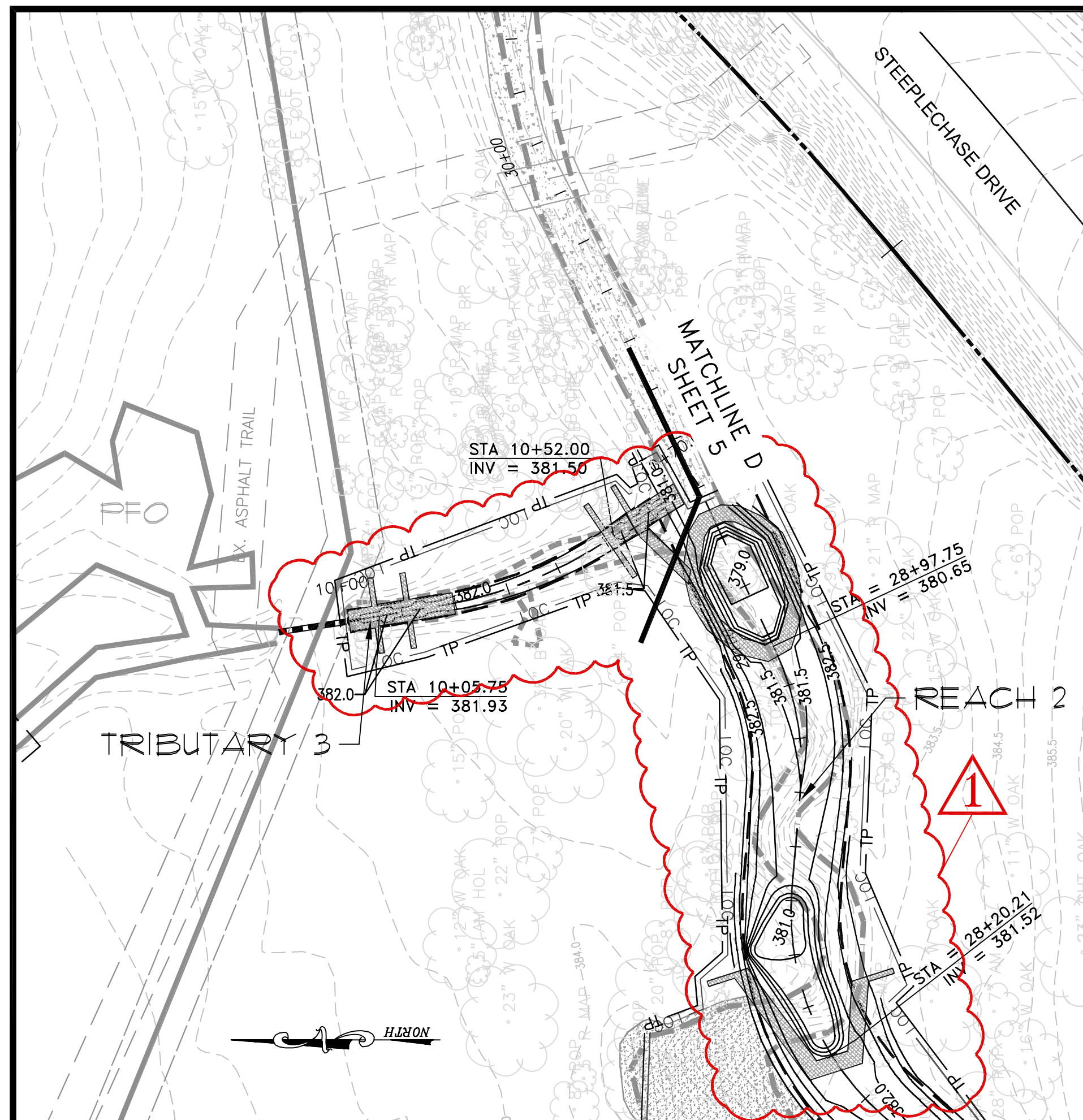
Design	Draft	Approved
JBP	JBP	FRG

Sheet #
6 of 63

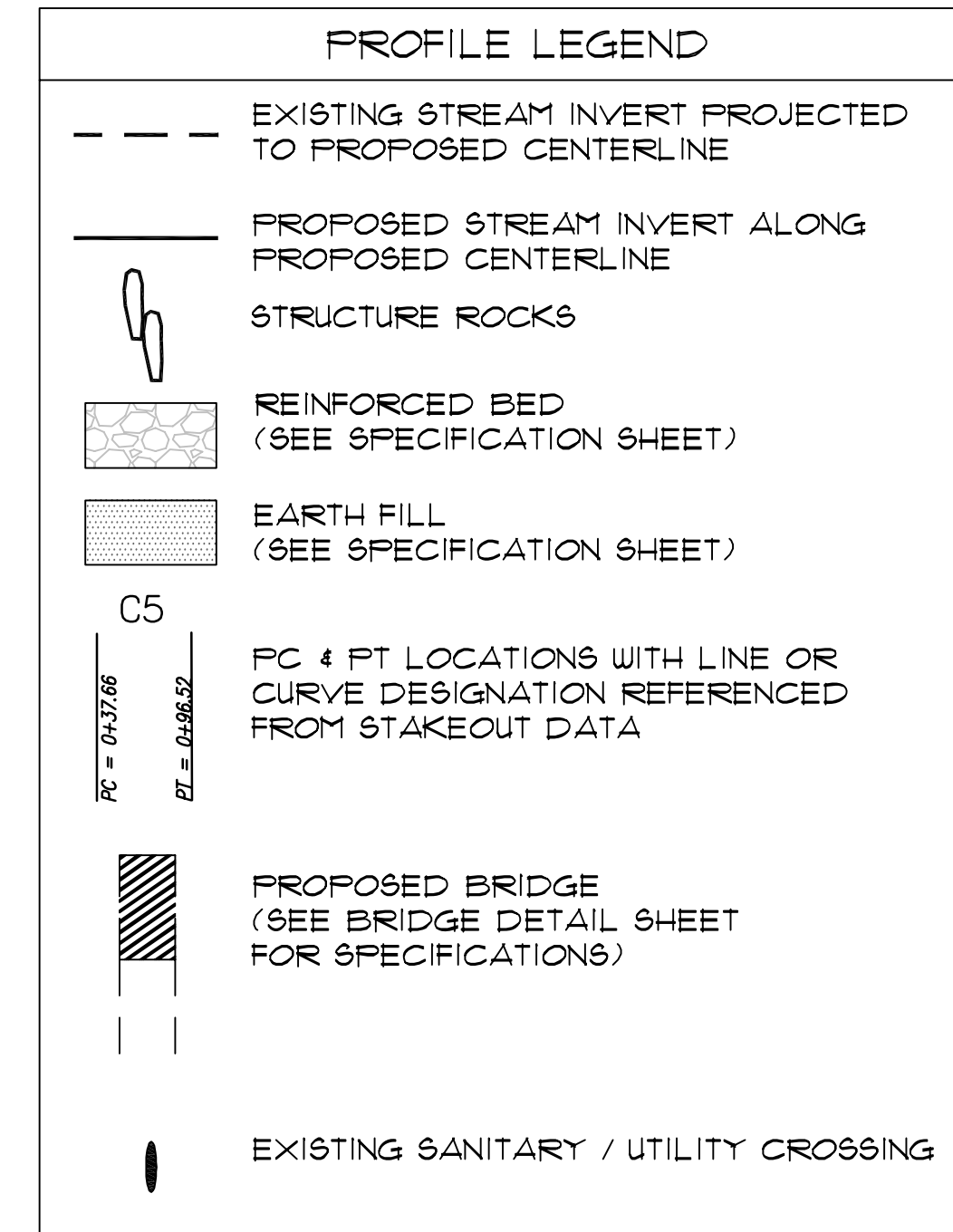
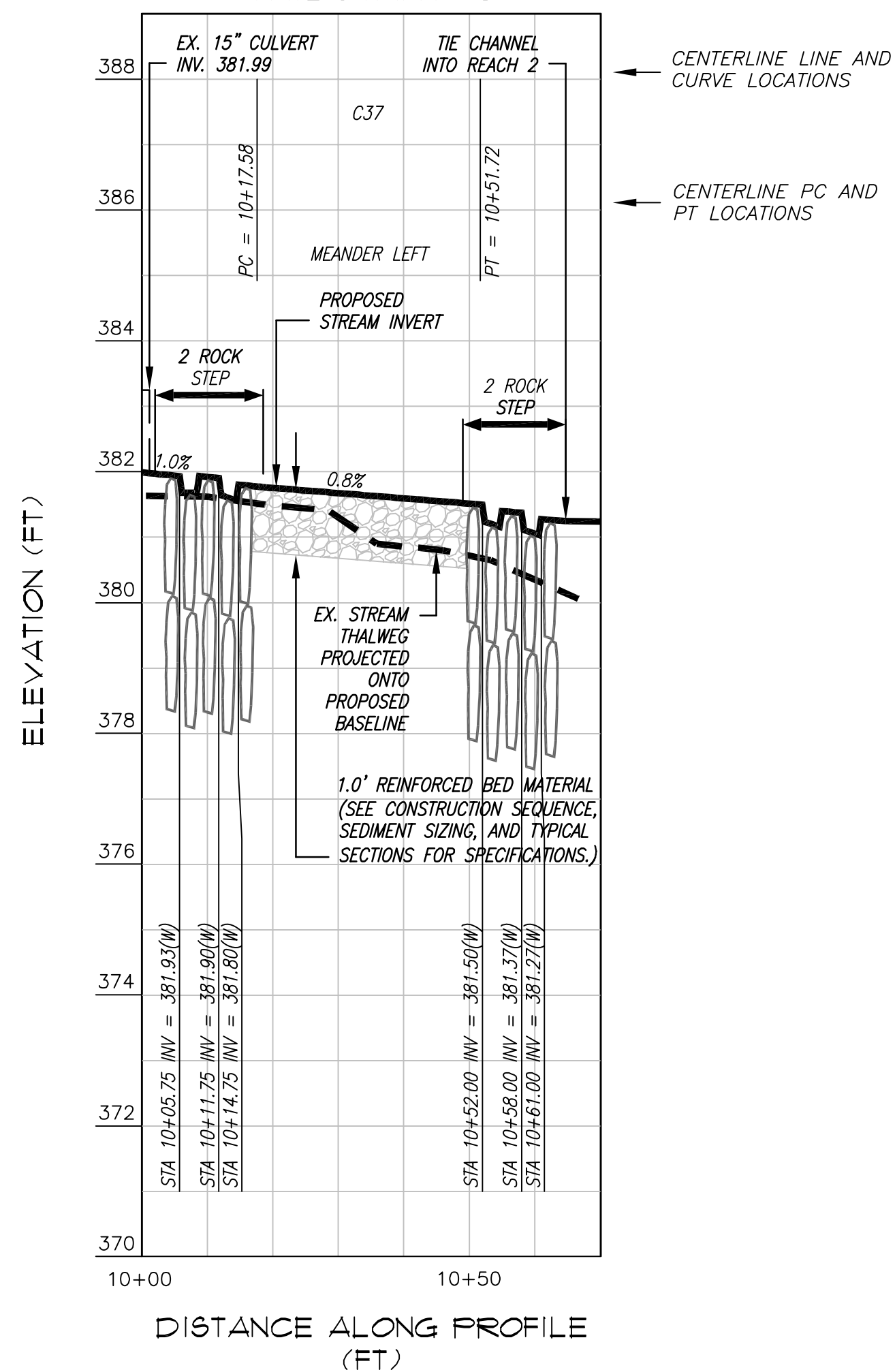
Computer File Name:
1:20062002-CAROLINER-IMP-Plan
GRADING PLAN & PROFILE 01.dwg

Wetland
Studies and Solutions, Inc.
5300 Wellington Branch Drive, Suite 100 • Gainesville, VA 20155
Phone: 703 679 5600 • Fax: 703 679 5601
wetlandstudies.com

Copyright © 2009 Wetland Studies and Solutions, Inc.



LONGITUDINAL PROFILE
TRIBUTARY 3

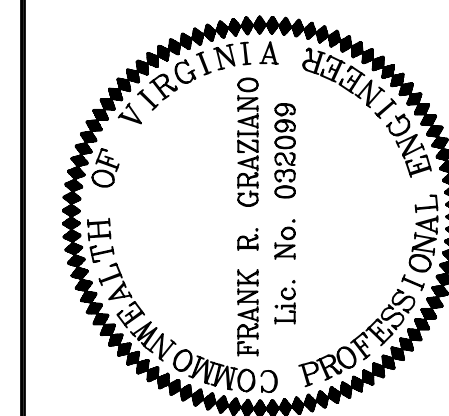


GRADING NOTES:

1. PROPOSED CONTOURS ARE INTENDED TO DEPICT OVERALL GRADING CONCEPT. DUE TO IRREGULARITY OF ROCK SHAPES, CONTOURS DEPICTING POOL GRADING WITHIN STRUCTURES ARE APPROXIMATE. SPECIFICATIONS FOR GRADING IN VICINITY OF STRUCTURES ARE PROVIDED ON THE TYPICAL SECTIONS AND CONSTRUCTION DETAILS SHEETS. THE SPECIFICATIONS IN THE CONSTRUCTION DETAILS TAKE PRECEDENCE OVER THE CONTOURS DEPICTED ON THE GRADING PLAN.
2. TREE PROTECTION FENCING SHALL BE PLACED AROUND ALL AREAS OF TREES TO BE PRESERVED ADJACENT TO THE LIMITS OF CLEARING AND GRADING.
3. IT IS ASSUMED THAT ALL TREES WITHIN THE LIMITS OF CLEARING WILL BE REMOVED. IN THE EVENT THAT THE CONTRACTOR BELIEVES A TREE WITHIN THE LOC COULD BE SAVED, THE CONTRACTOR SHALL CONTACT WETLAND STUDIES AND SOLUTIONS, INC. AND HAVE THE PROJECT ENGINEER DETERMINE IF THE TREE SHOULD BE SAVED OR REMOVED.
4. REFER TO GEOMETRY DETAILS AND PLAN FOR ALL STREAM INFORMATION (INCLUDING TRAVERSE LOCATIONS AND ELEVATIONS).
5. ALL STREAM BEDS REQUIRE 1.0 FT OF REINFORCED BED MATERIAL. FOR CLARITY, IT IS NOT SHOWN IN STREAM BEDS WHERE GRADING IS DEPICTED.

LONGITUDINAL PROFILE
SCALE: H: 1" = 20'
V: 1" = 2'

Northern Virginia Stream Restoration Bank
The Glade - Reach 2
Fairfax County, Virginia



REVISIONS		App. By	Rev. By
No.	Date	Description	
1	12/08	REVISED LOG/TEMP. ACCESS PATH	
5	12/08	REMOVED TRIB 2 AND UPSTREAM TRIB 1	

Horizontal Datum: VCS NAD 83
Vertical Datum: NGVD 29
Boundary and Topo Source: WSSI and Fairfax Digital Data

Design: JBP
Draft: JBP
Approved: FRG

Sheet #
7 of 63
Computer File Name: 1:20062002-C6040ENR-01Plan-GRADING PLAN & PROFILE.LST

Wetland Studies and Solutions, Inc.
5300 Wellington Branch Drive, Suite 100 • Gainesville, VA 20155
Phone: 703 679 5600 • Fax: 703 679 5601
wetlandstudies.com

Copyright © 2009 Wetland Studies and Solutions, Inc.