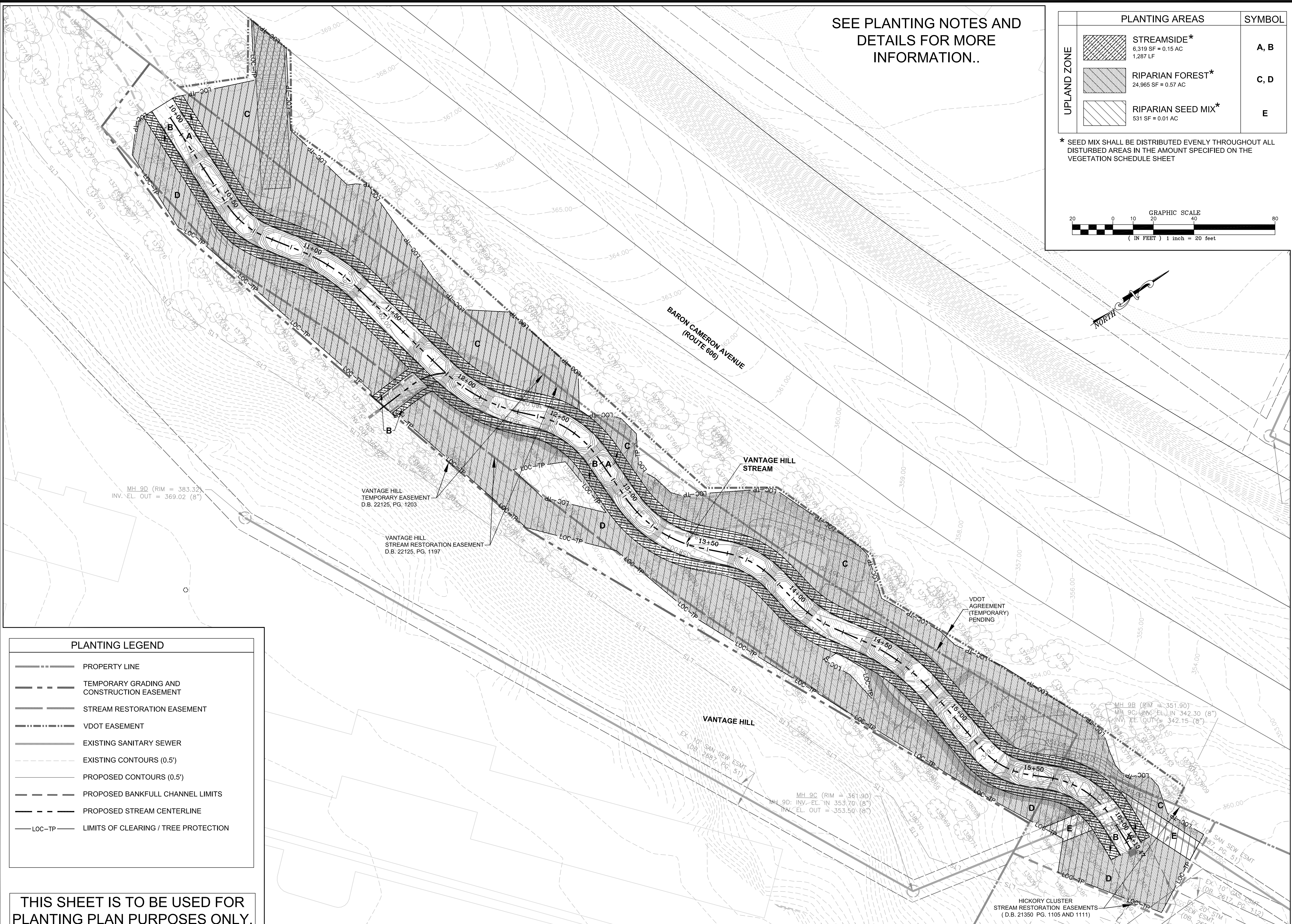
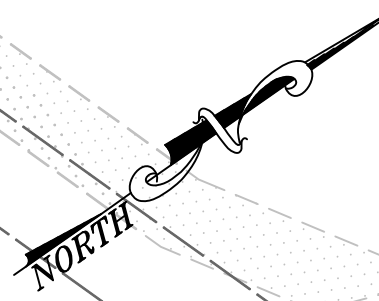
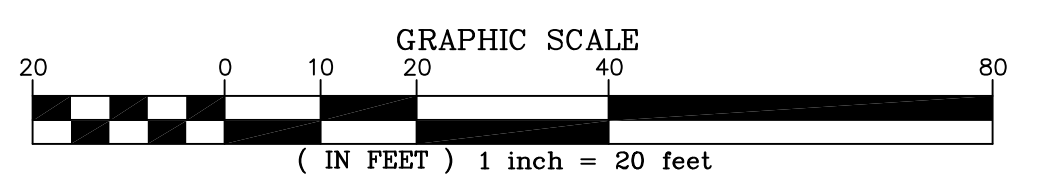


SEE PLANTING NOTES AND
DETAILS FOR MORE
INFORMATION..

UPLAND ZONE	PLANTING AREAS	SYMBOL
	STREAMSIDE* 6,319 SF = 0.15 AC 1,287 LF	A, B
	RIPARIAN FOREST* 24,965 SF = 0.57 AC	C, D
	RIPARIAN SEED MIX* 531 SF = 0.01 AC	E

* SEED MIX SHALL BE DISTRIBUTED EVENLY THROUGHOUT ALL
DISTURBED AREAS IN THE AMOUNT SPECIFIED ON THE
VEGETATION SCHEDULE SHEET



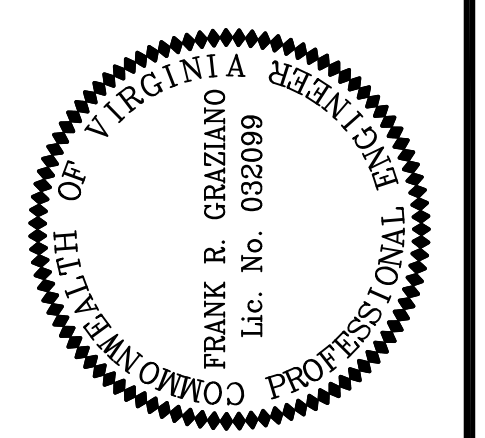
PLANTING LEGEND

	PROPERTY LINE
	TEMPORARY GRADING AND CONSTRUCTION EASEMENT
	STREAM RESTORATION EASEMENT
	VDOT EASEMENT
	EXISTING SANITARY SEWER
	EXISTING CONTOURS (0.5')
	PROPOSED CONTOURS (0.5')
	PROPOSED BANKFULL CHANNEL LIMITS
	PROPOSED STREAM CENTERLINE
	LOC-TP LIMITS OF CLEARING / TREE PROTECTION

THIS SHEET IS TO BE USED FOR
PLANTING PLAN PURPOSES ONLY.

Wetland
Studies and Solutions, Inc.
5300 Wellington Branch Drive, Suite 100 • Gainesville, VA 20155
Phone: 703 679 5600 • Fax: 703 679 5601
wetlandsolutions.com

Northern Virginia Stream Restoration Bank
Vantage Hill
Fairfax County, Virginia
Planting Plan



REVISIONS

No.	Date	Description	App. By	Rev. By

DATE: OCTOBER 2012 SCALE: 1" = 20'

Horizontal Datum: VCS NAD 83
Vertical Datum: NGVD 29
Boundary and Topo Source: WSSI and Fairfax Digital Data
Design: KLP Draft: CLL Approved: FRG
Sheet # 11 of 39
Computer File Name: L:\2009\2012\11\KAS\2012\ENGR-10-Planting Plan 01.dwg