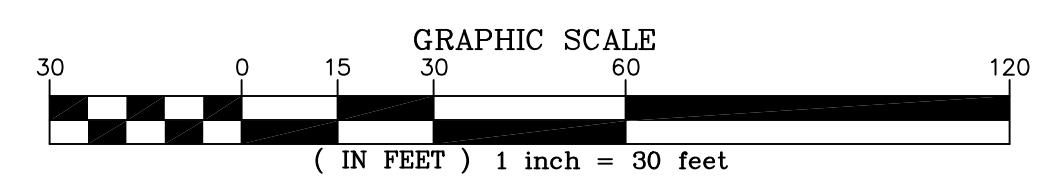
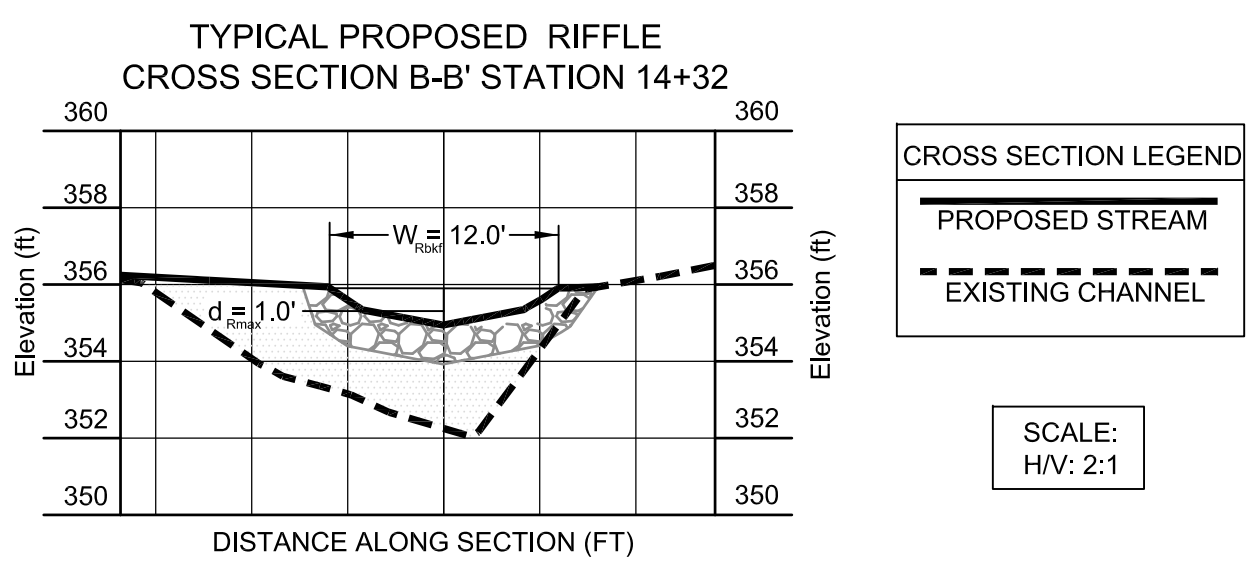
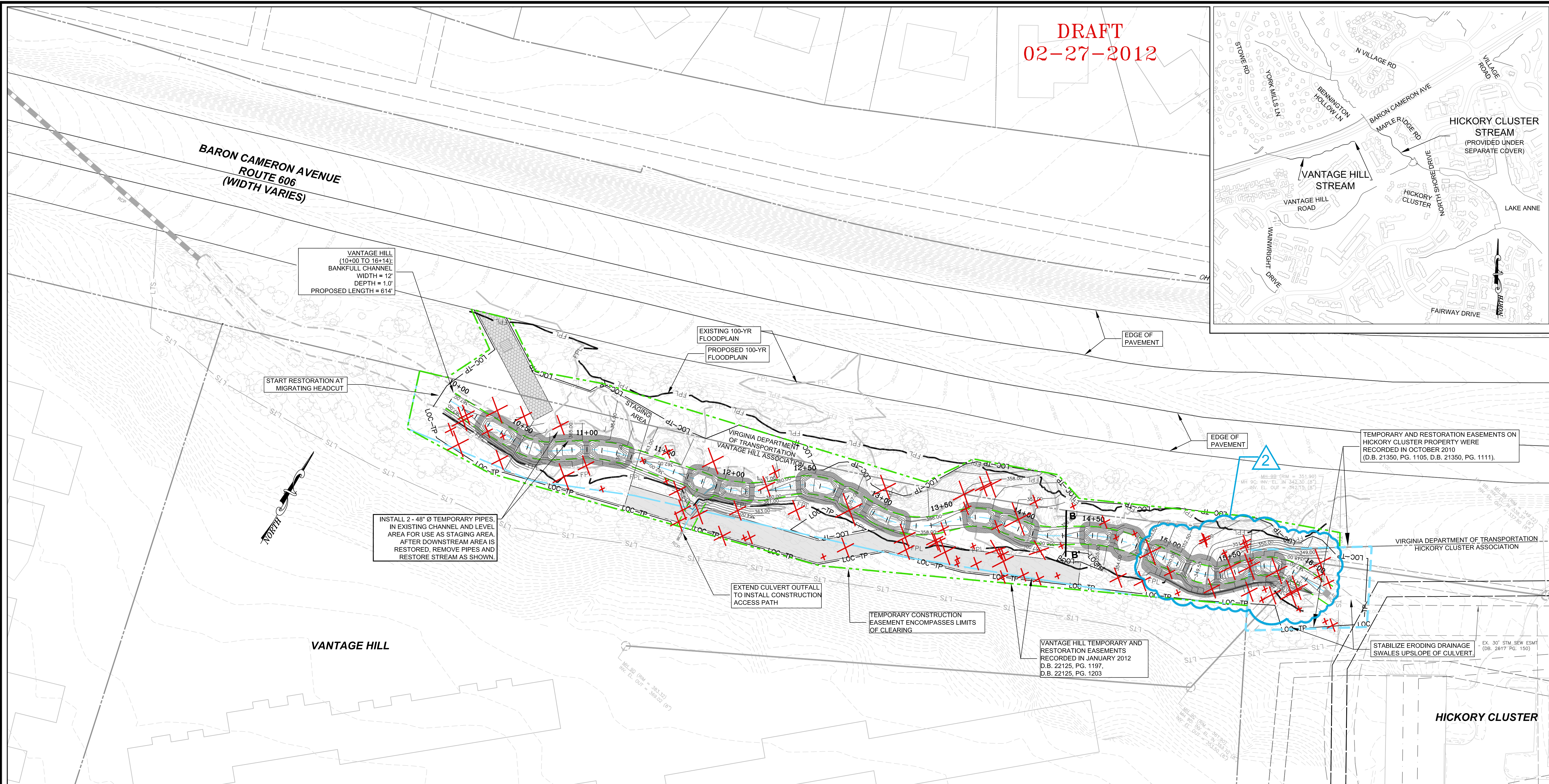
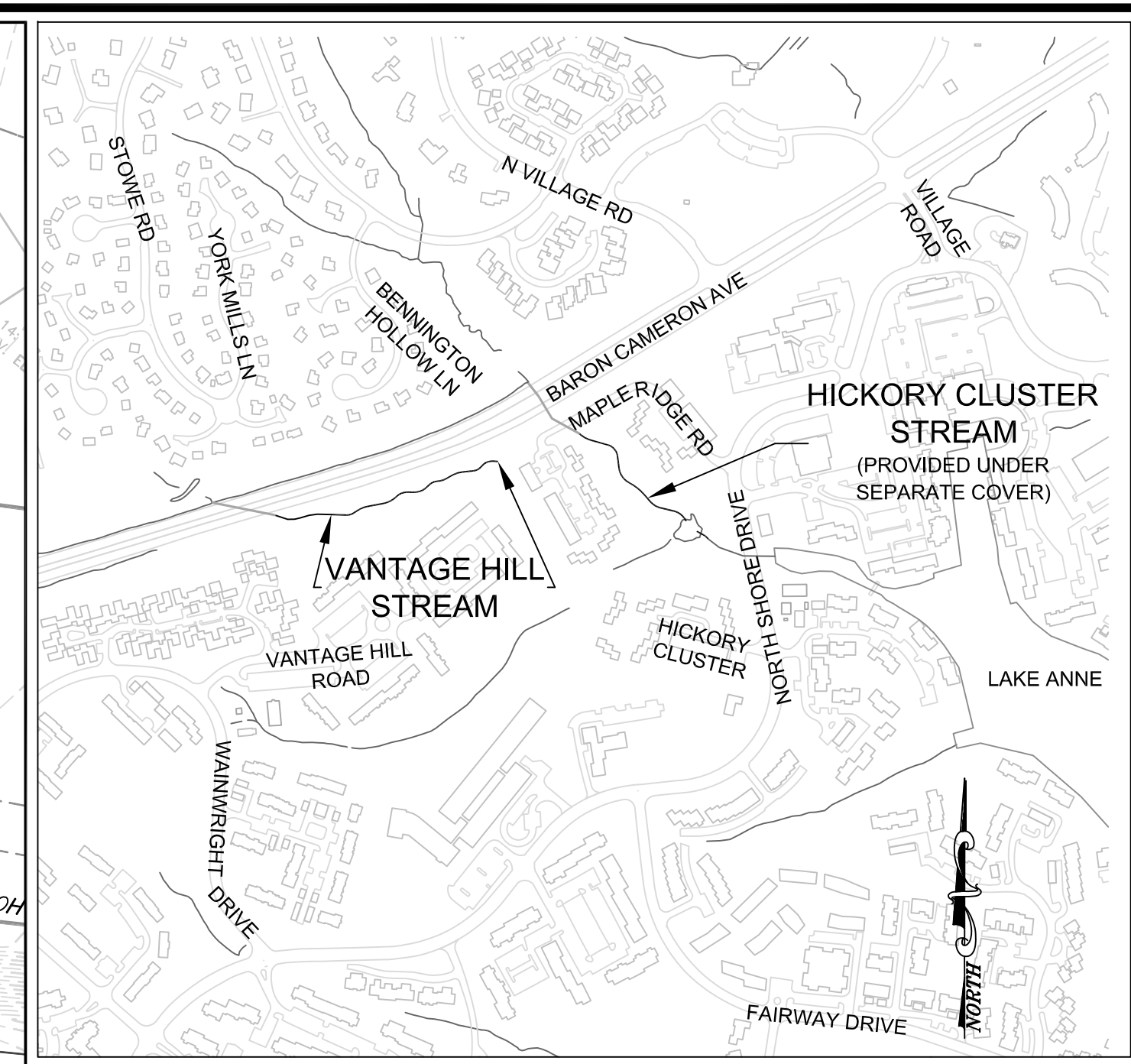


DRAFT
02-27-2012



STREAM LENGTH:
VANTAGE HILL = 614'

PRELIMINARY PLAN LEGEND	
TEMP. GRADING & CONST. ESMNT, & INGRESS-EGRESS ESMNT	ACCESS PATH
PROPOSED STREAM ESMNT	TREE TO BE REMOVED
PROPOSED STREAM ESMNT, TEMP. GRADING & CONST. ESMNT, & INGRESS-EGRESS ESMNT	EXISTING 100-YR FLOOD ELEVATION
EXISTING CONTOURS (0.5')	PROPOSED 100-YR FLOOD ELEVATION
EXISTING INFRASTRUCTURE	LIMITS OF CLEARING/TREE PROTECTION FENCE
NON-PERENNIAL STREAM (EXISTING TOP OF BANK)	
LTS - LIMITS OF TREE SURVEY	
PROPOSED BANKFULL TOP OF BANK	
PROPOSED CENTERLINE	
PROPOSED CONTOURS (0.5')	

Northern Virginia Stream Restoration Bank Vantage Hill Fairfax County, Virginia				Wetland Studies and Solutions, Inc. 5300 Wellington Branch Drive, Suite 100 • Gainesville, VA 20155 Phone 703 679 5600 • Fax 703 679 5601 wetlandstudies.com					
Preliminary Plan									
Copyright © 2012 Wetland Studies and Solutions, Inc.									
REVISIONS									
No.	Date	Description	Rev. By	App. By	No.	Date	Description	Rev. By	App. By
1	2/01/12	Removed perm. easmt. on VDOT property	KLP	FRG					
2	2/27/12	Shifted structures out of sanitary easmt.	KLP	FRG					
DATE: AUGUST 30, 2011 SCALE: 1" = 30' C.I. = 0.5'								H. D.: VCS NAD 83 V. D.: NGVD 29	
Boundary and Topo Source: WSSI and Fairfax Digital Data									
Design Draft Approved									
KLP KLP FRG									
Sheet #									
2 of 3									
Computer File Name:									