



Northern Virginia Stream Restoration Bank Reston Status

January 15, 2013

Presented by Kelly Petrey

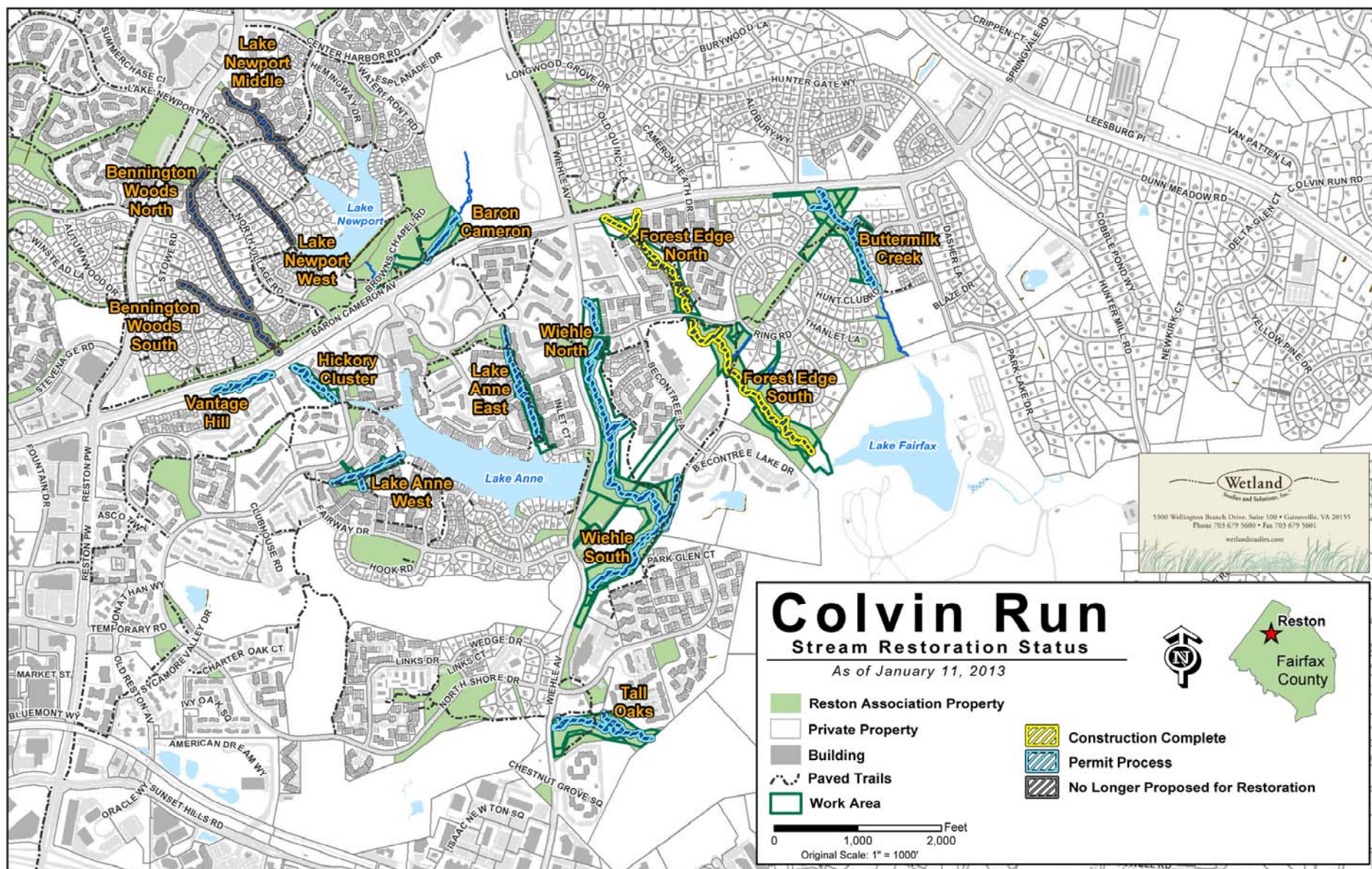
Wetland Studies and Solutions, Inc.

5300 Wellington Branch Drive · Suite 100 · Gainesville · Virginia 20155

www.wetlandstudies.com



Reston Status



L:\20000s\20010\GIS\RestorationProgress\DRB\Colvin_RestorationProgress_20130111.mxd



Northern Virginia Stream Restoration Bank Vantage Hill Final Plan

January 15, 2013

Presented by Kelly Petrey

Wetland Studies and Solutions, Inc.

5300 Wellington Branch Drive · Suite 100 · Gainesville · Virginia 20155

www.wetlandstudies.com



Vantage Hill – Final Plan

No changes proposed from Preliminary Plan

Vantage Hill Community Events:

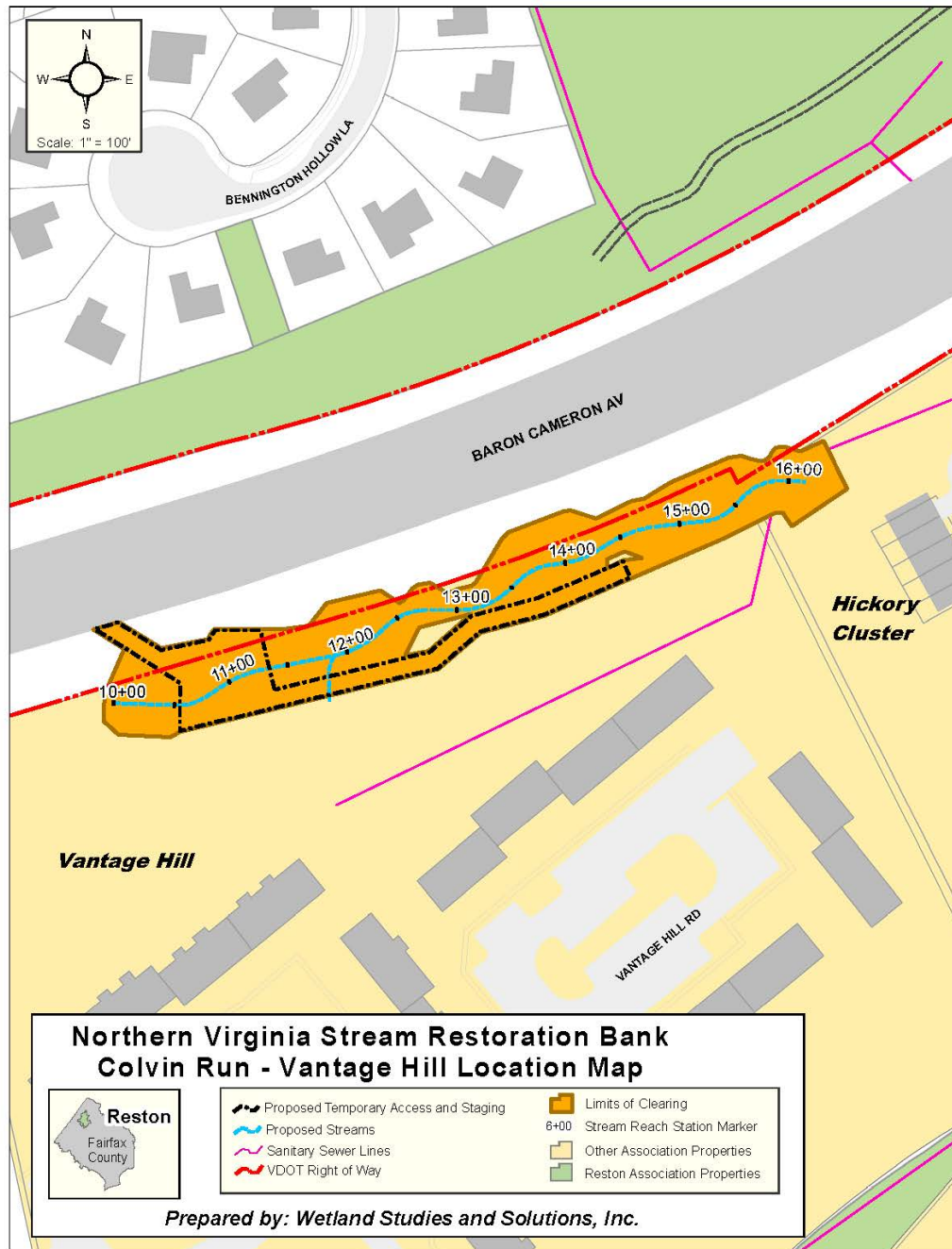
- Preliminary Plan - DRB Approved March 2012
- Community Presentation September 13, 2011
- Community signed easements January 2012

Proposed Construction Access & Staging:

- Access directly from Baron Cameron Avenue and follows channel on right bank
- Staging Area - small area over channel at upstream end of restoration

Channel Length & Dimensions:

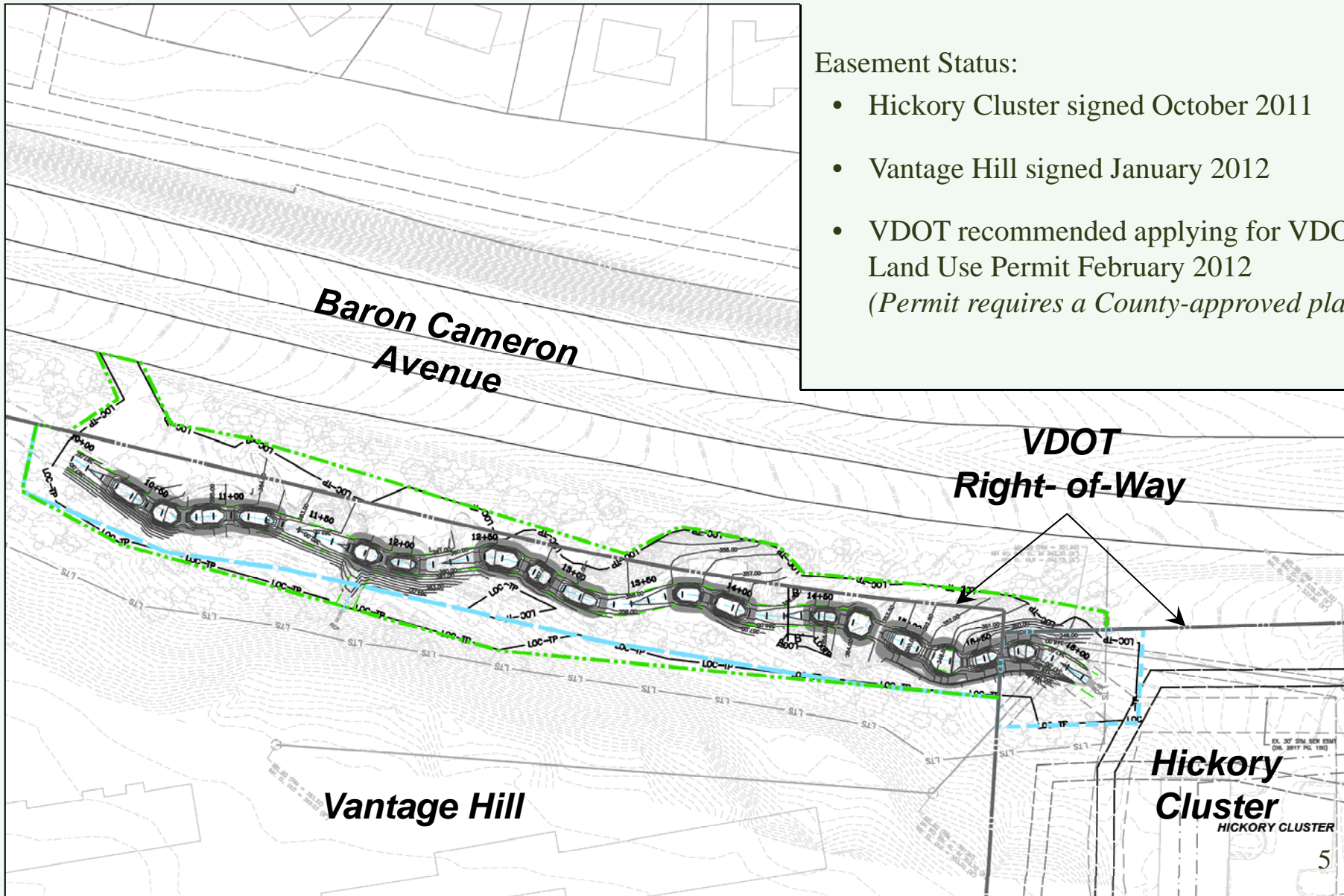
- Bankfull Width = 12'
- Bankfull Depth = 1.0'
- Restored Length = 614'



Vantage Hill –Easements

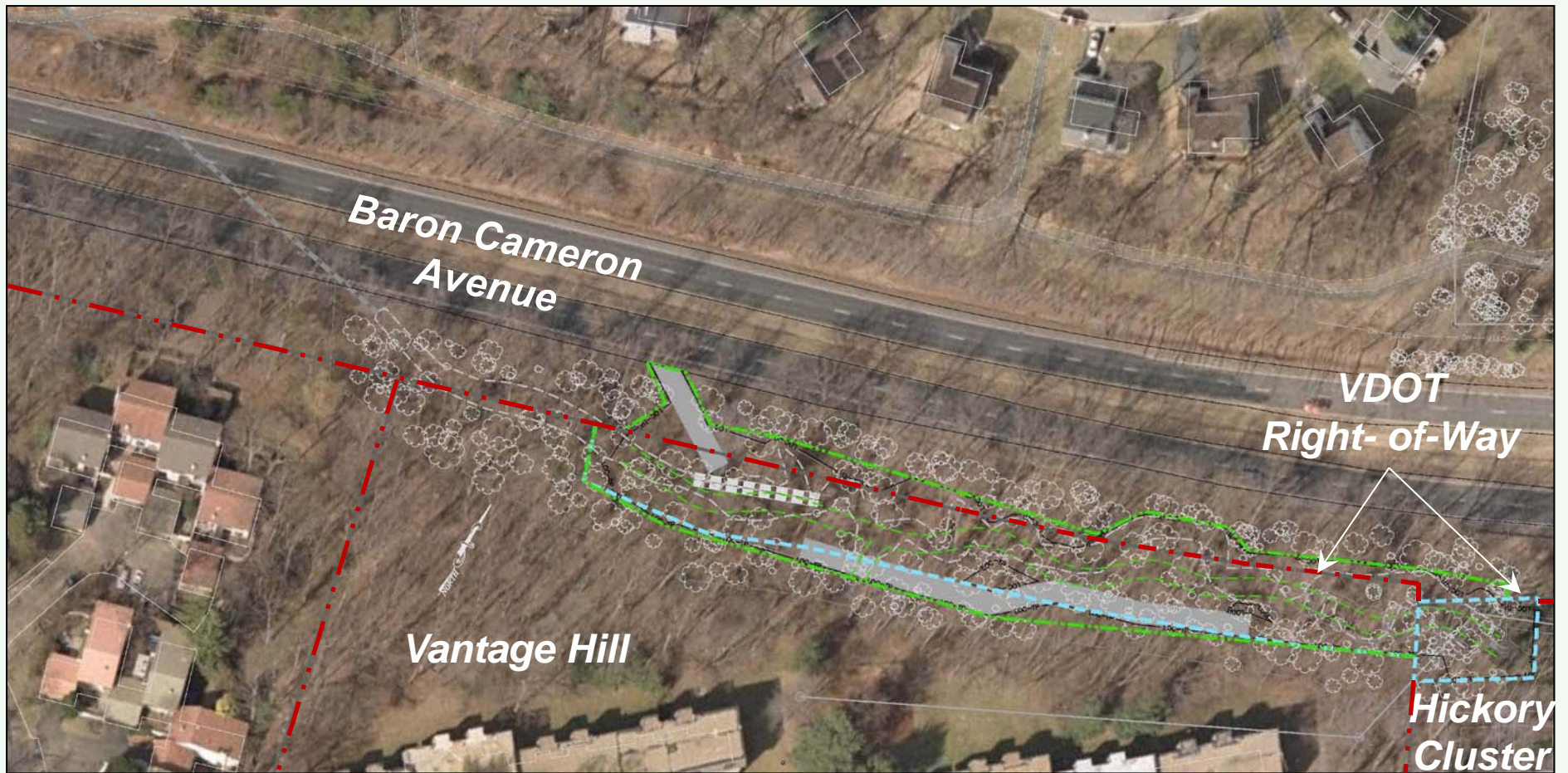
Easement Status:

- Hickory Cluster signed October 2011
- Vantage Hill signed January 2012
- VDOT recommended applying for VDOT Land Use Permit February 2012
(Permit requires a County-approved plan)



Vantage Hill – Tree Survey

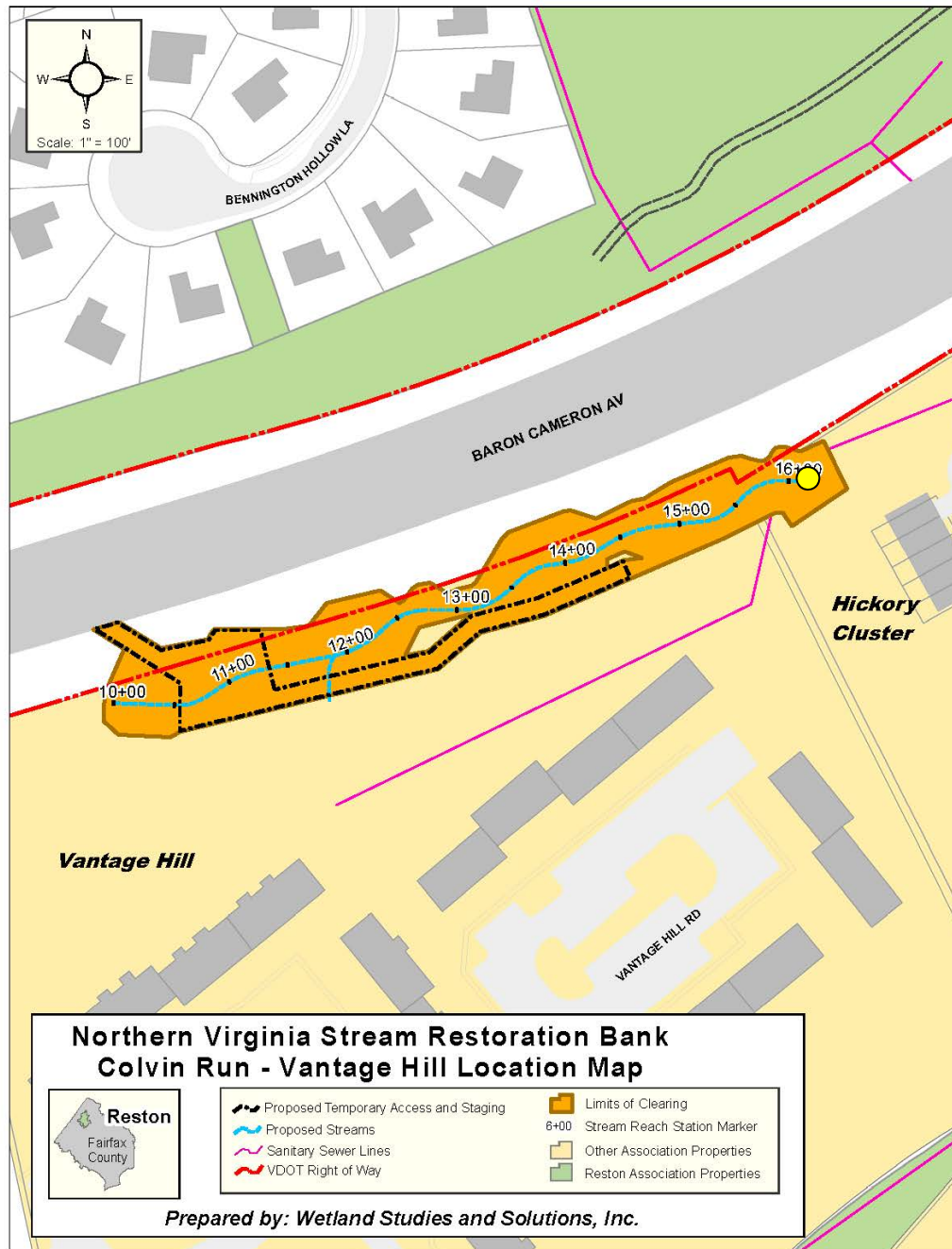
291 trees surveyed

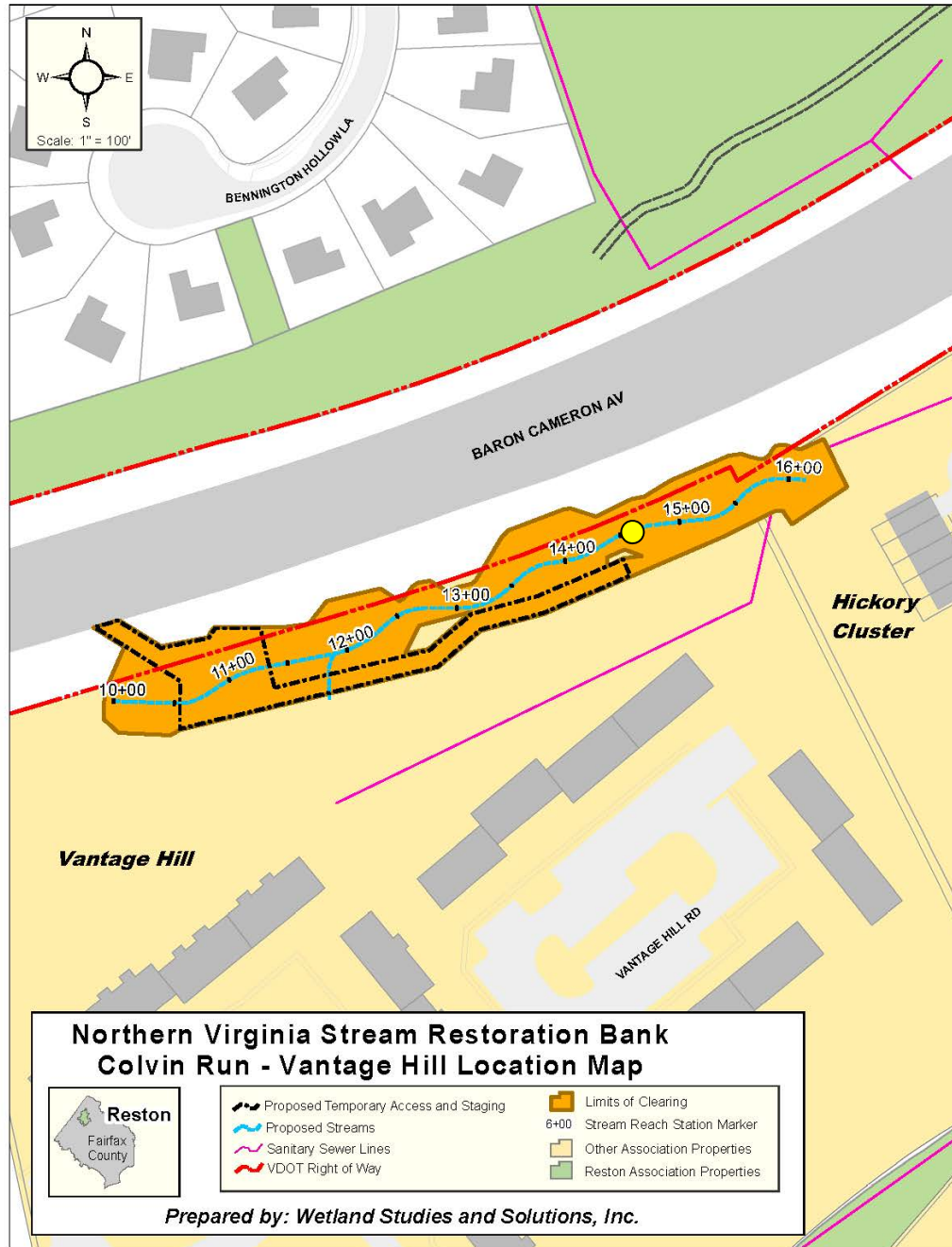


Vantage Hill Existing Conditions

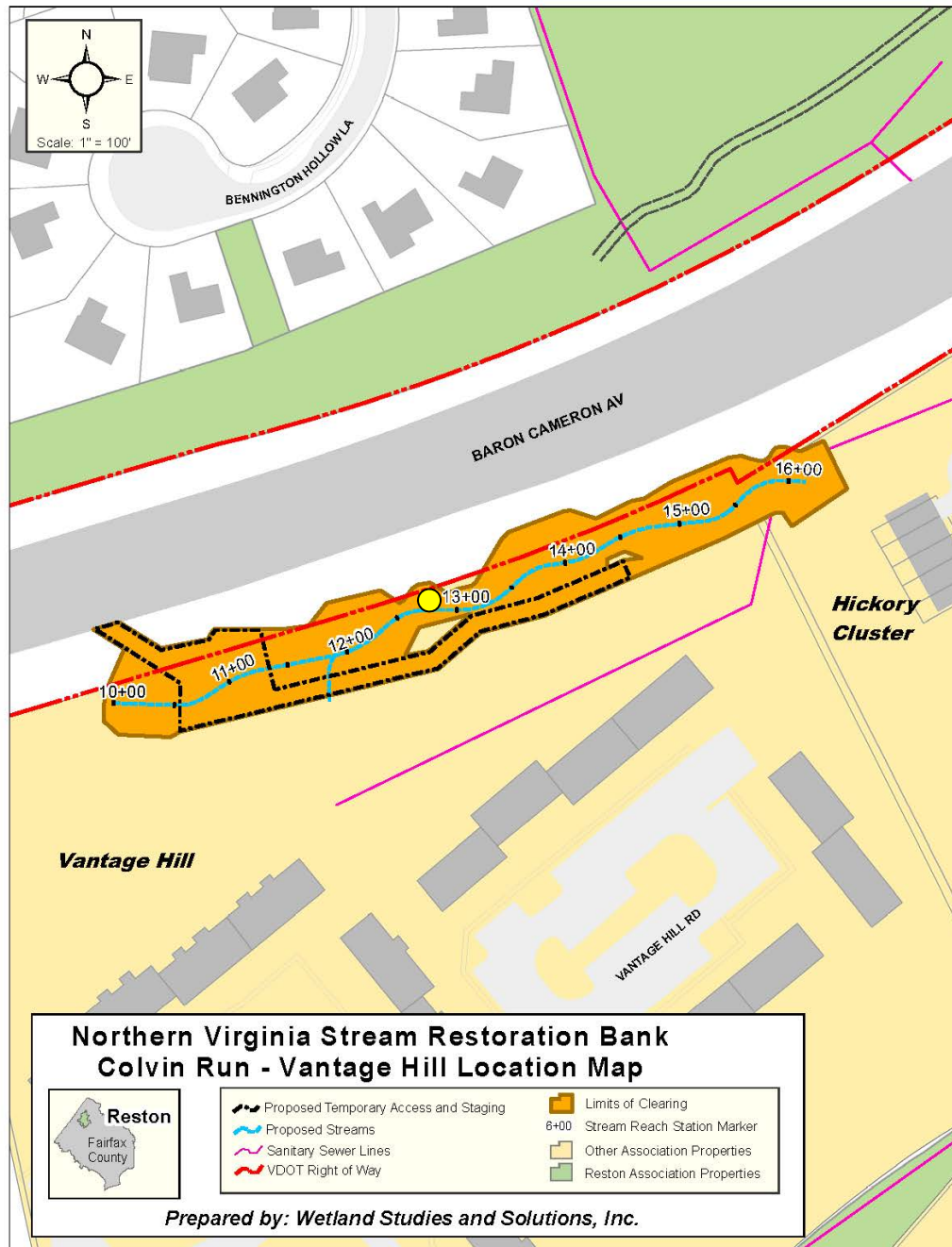


- Culvert at Hickory Cluster
- Invasive bamboo, sanitary crossing

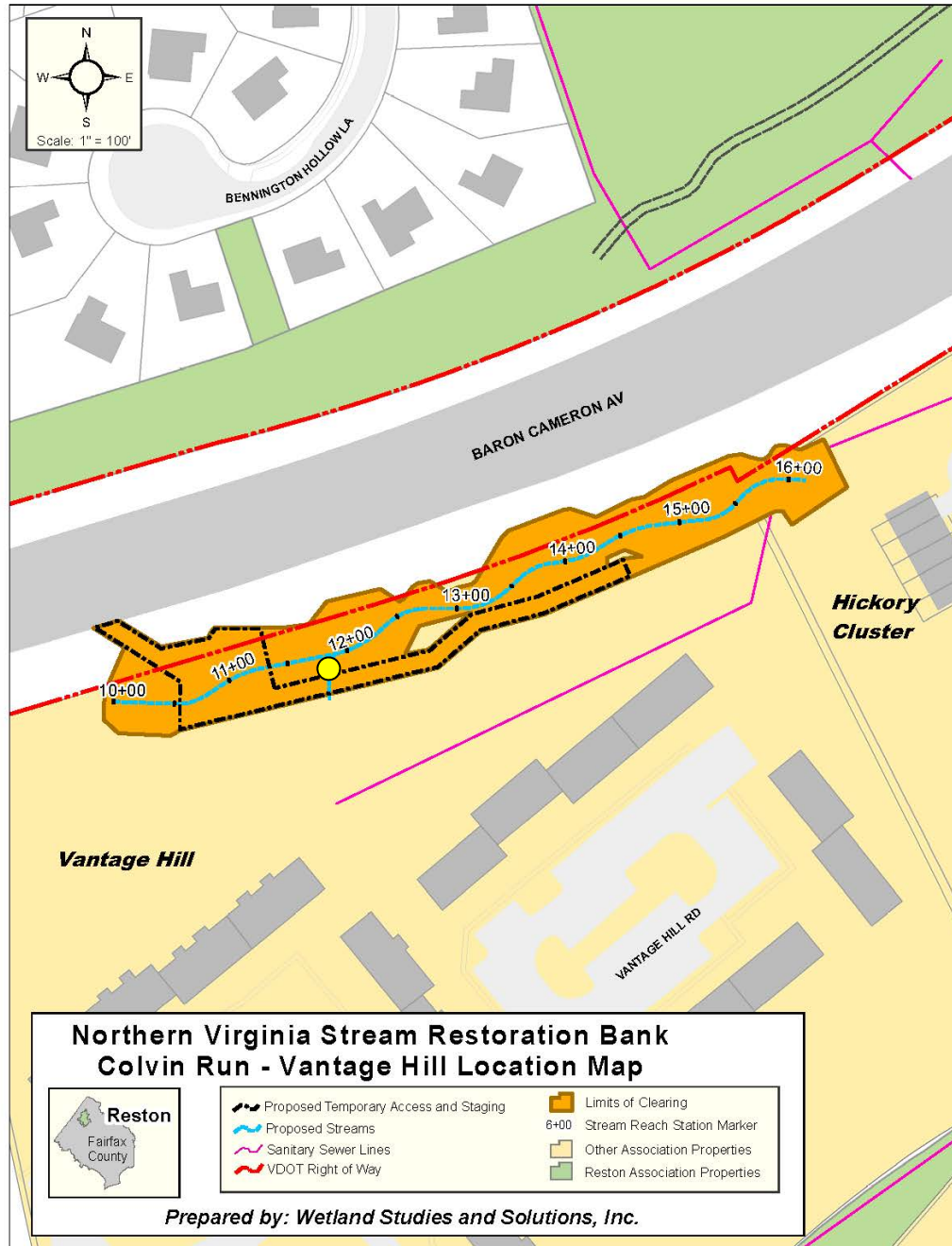




- Exposed utilities
- Undercut trees



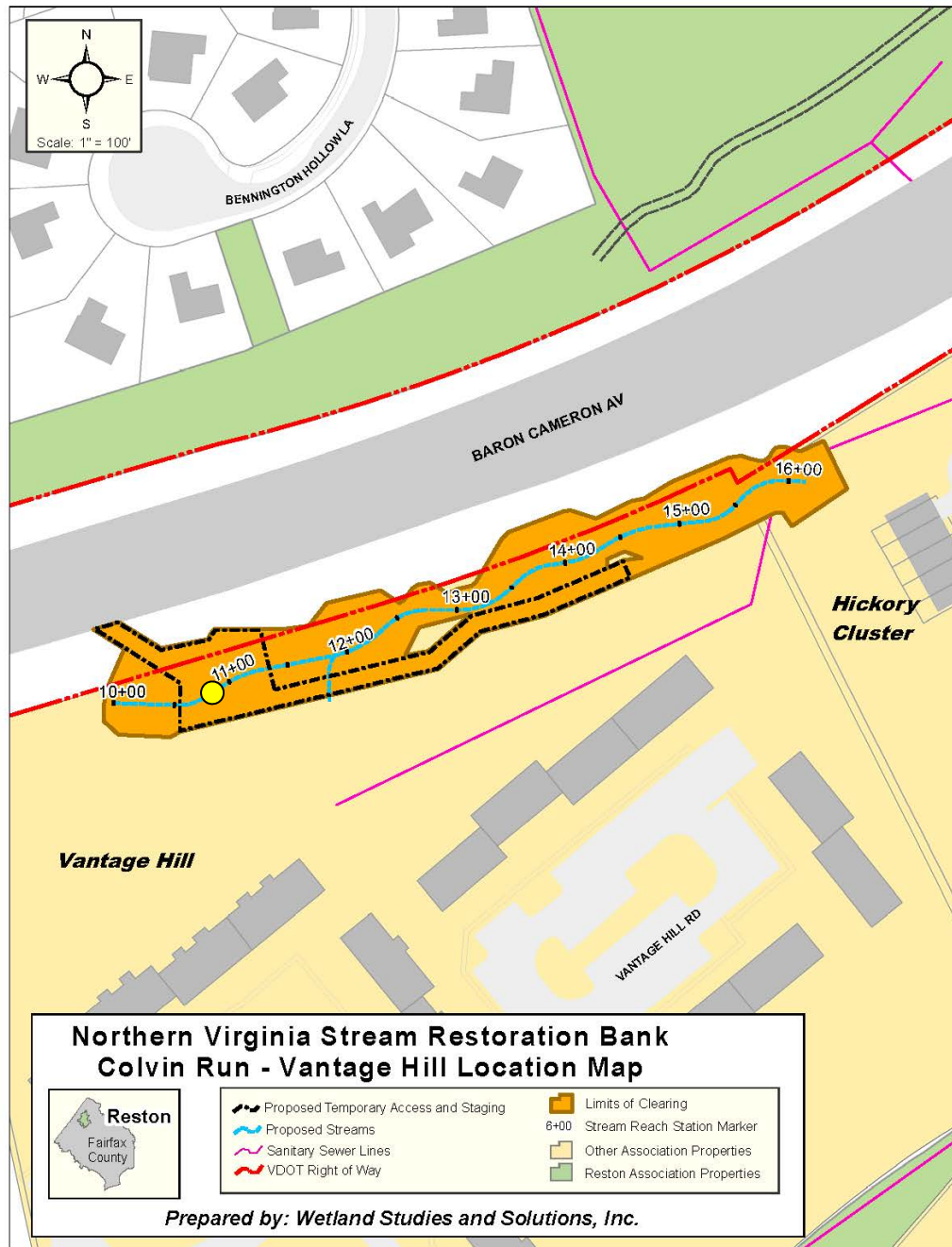
- Tree fall, 4+ foot eroded bank, invasive English ivy



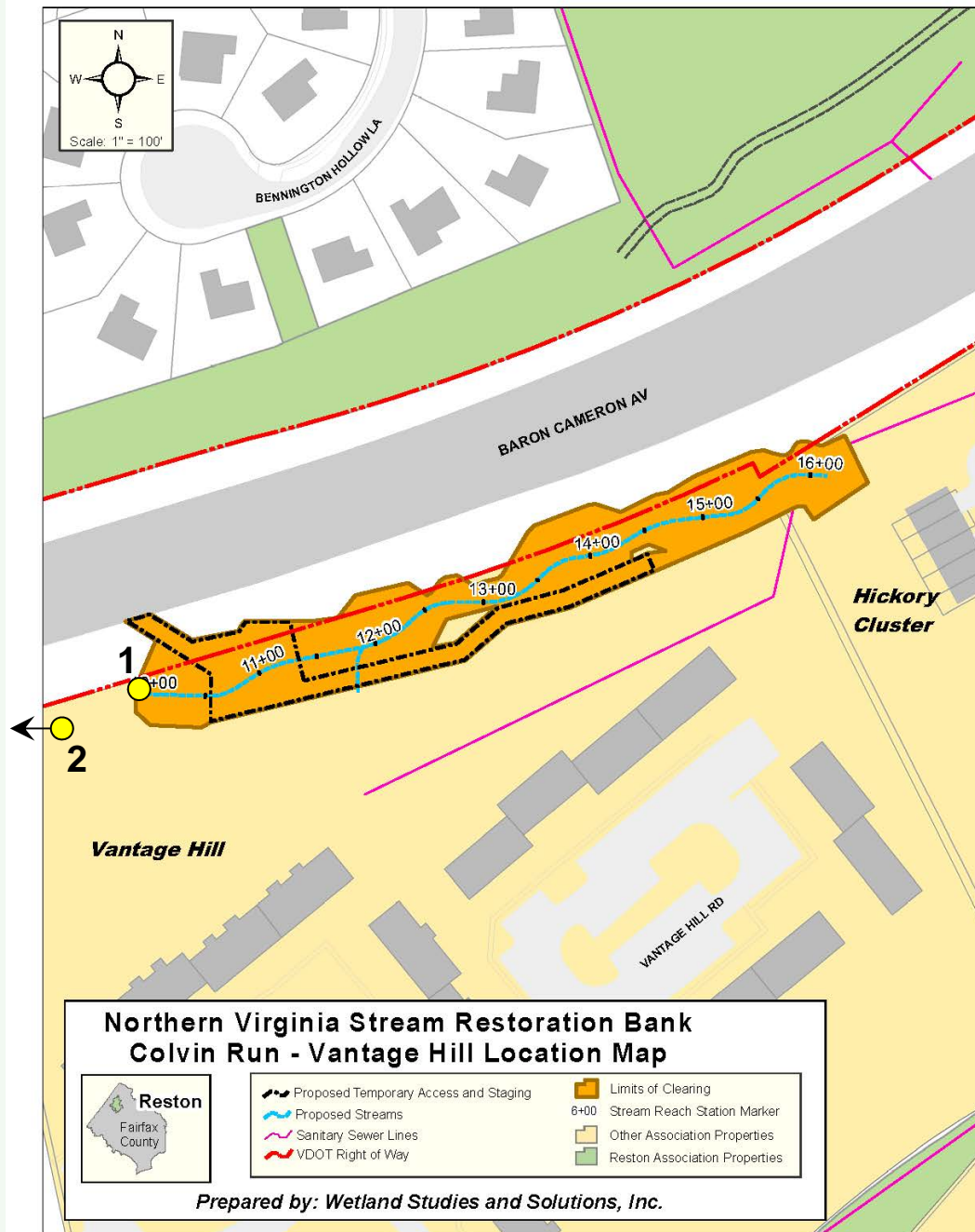
L:\20000s\20017\GIS\VantageHill_StreamStations032012.mxd



- Steep, unstable culvert tie-in

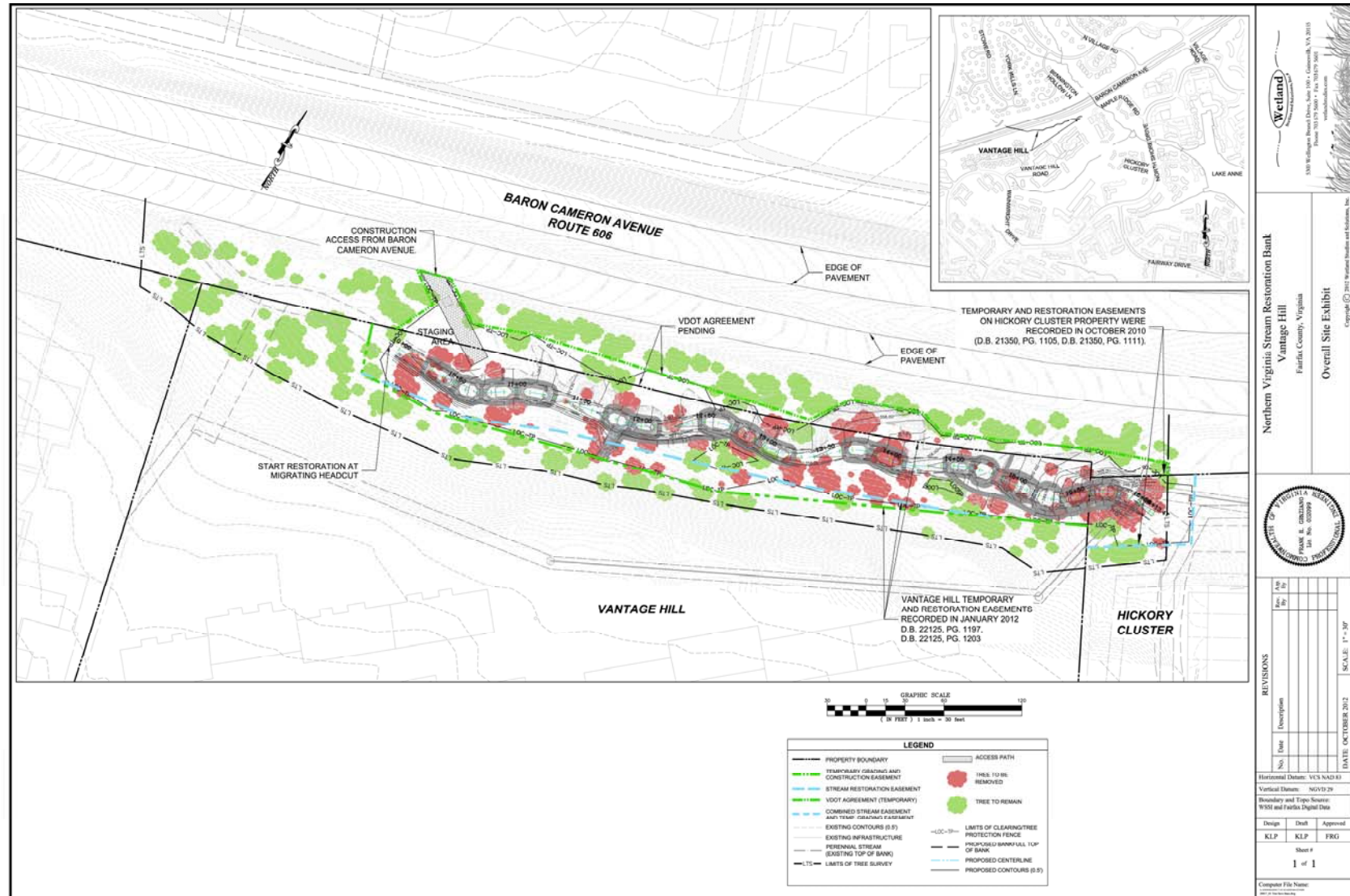


- Headcut migrating towards
Baron Cameron Avenue

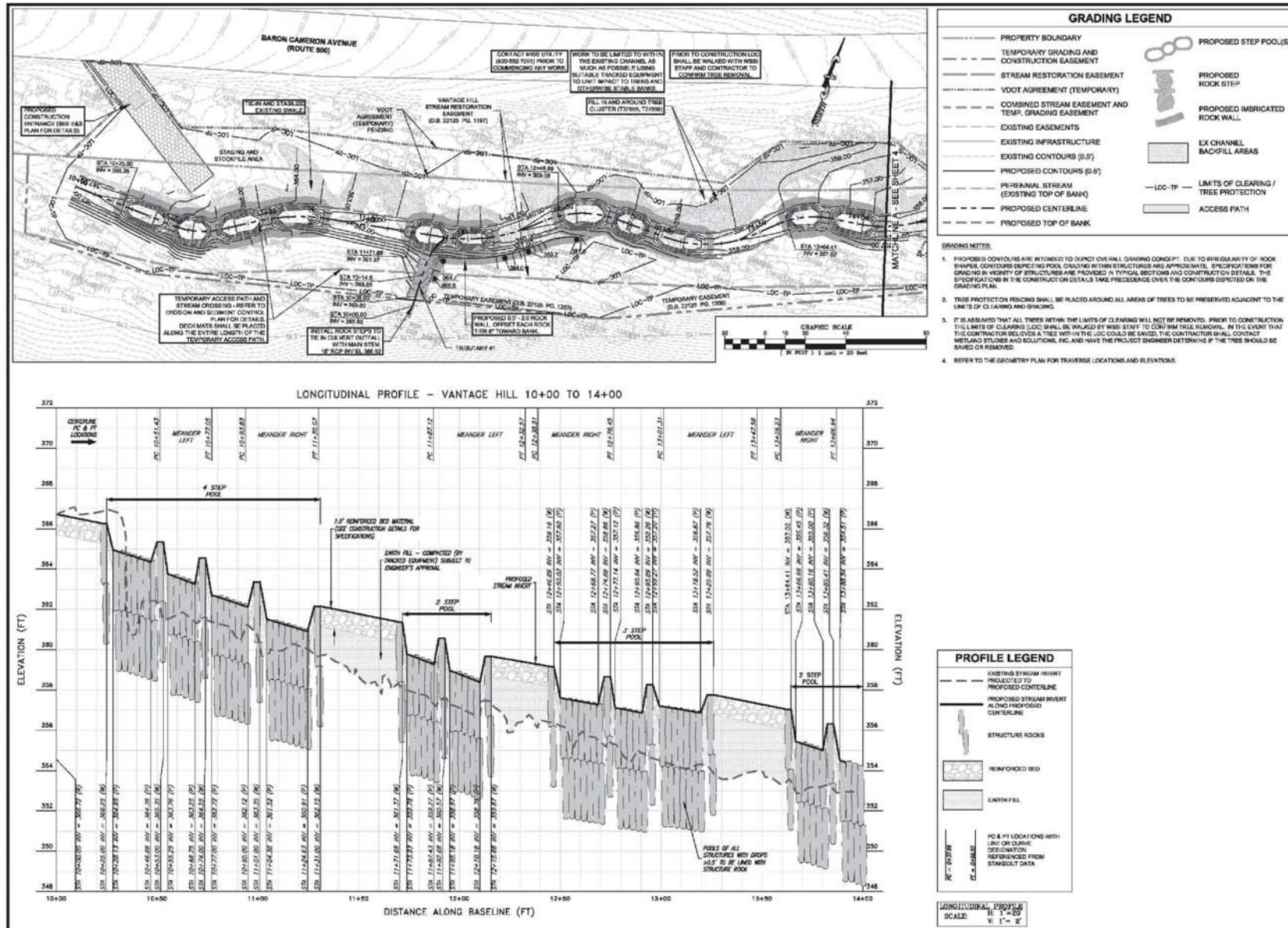


- Upstream of headcut channel is less than 1' deep
- 18" RCP crossing Baron Cameron

Vantage Hill – Final Plan



Vantage Hill – Final Plan



Northern Virginia Stream Restoration Bank
Vantage Hill
Fairfax County, Virginia

Grading Plan and Longitudinal Profile

REVISIONS

No.	Date	Description
1		
2		
3		
4		
5		
6		
7		
8		
9		
10		

DATE: OCTOBER 2012

SCALE: 1" = 20'

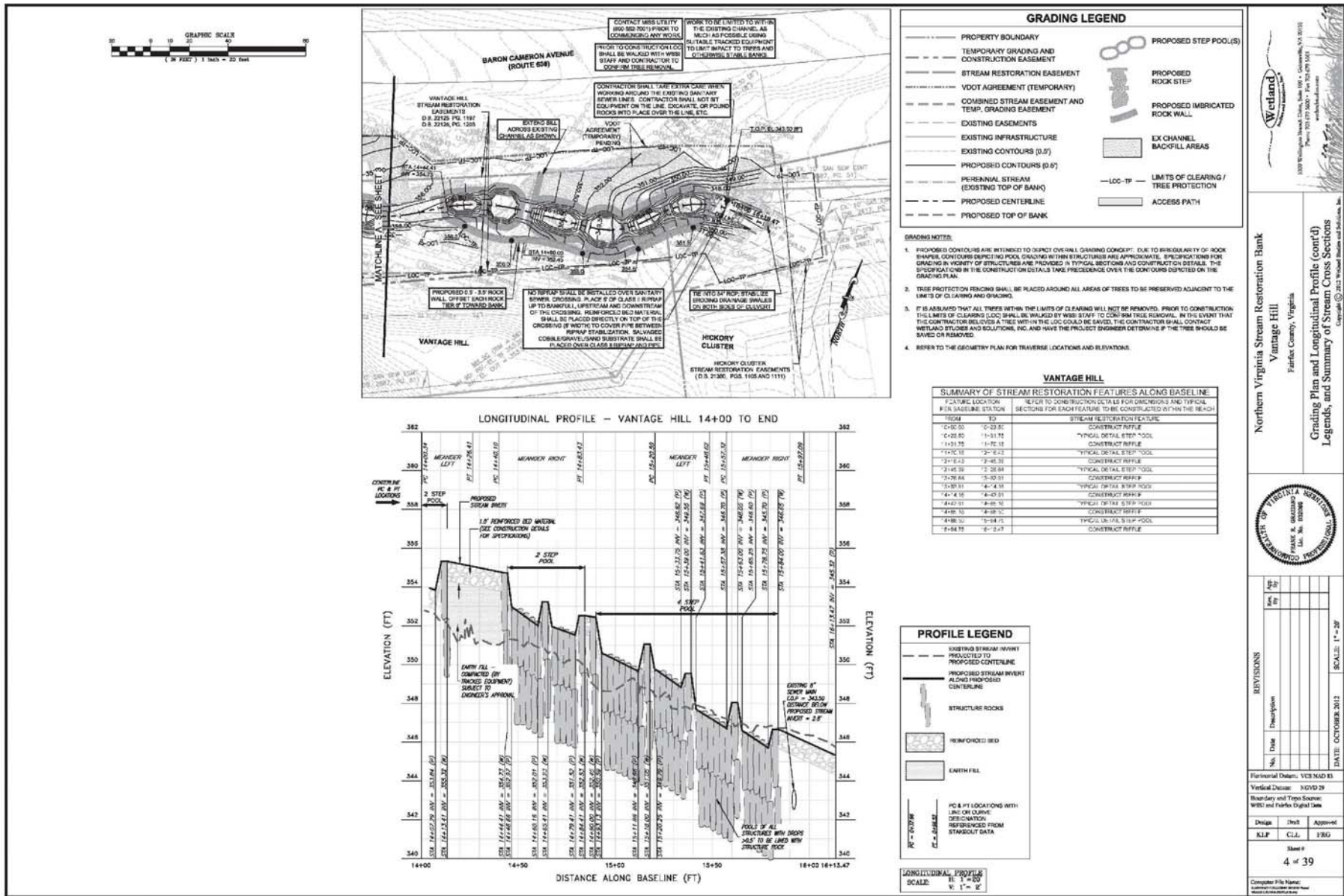
Formal Data: VCS MAD 81
Vertical Datum: NAVD 83
Boundary and Triangulation Source: WGS 84 and Fairfax Digital Data

Design: KLP
Check: C.J.L.
Approved: FRG

Sheet 9
3 of 39

Computer File Name: Vantage Hill Grading Plan.dwg
Model: Vantage Hill Grading Plan

Vantage Hill – Final Plan



Vantage Hill Tree Inventory

TREE INVENTORY SUMMARY VANTAGE HILL

DIAMETER (INCHES)	STATUS			
	TBR ^{1, 4, 5}		DND ²	TST ³
	(LIVE)	(DEAD / FALLEN)		
4-5" (Sapling)	22	0	23	45
6-9" (Pole)	23	0	63	86
10-17" (Small)	20	4	73	97
18-29" (Medium)	17	1	39	57
30"+ (Large)	2	0	4	6
	84	5		
TOTAL	89		202	291

¹ TBR means to be removed.

² DND means do not disturb.

³ TST means total surveyed trees.

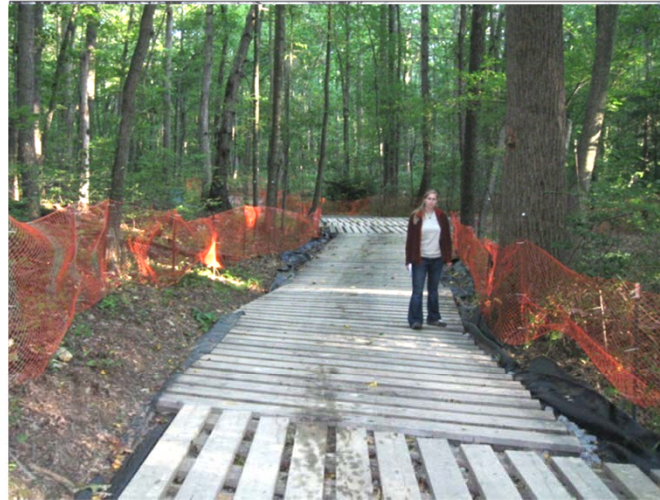
⁴ 15 TBR trees (5 saplings, 3 poles, 2 small, and 5 medium) are on Hickory Cluster property.

⁵ 4 TBR trees (2 poles, 1 small, and 1 medium) are on VDOT property.

Compiled 09/06/2011

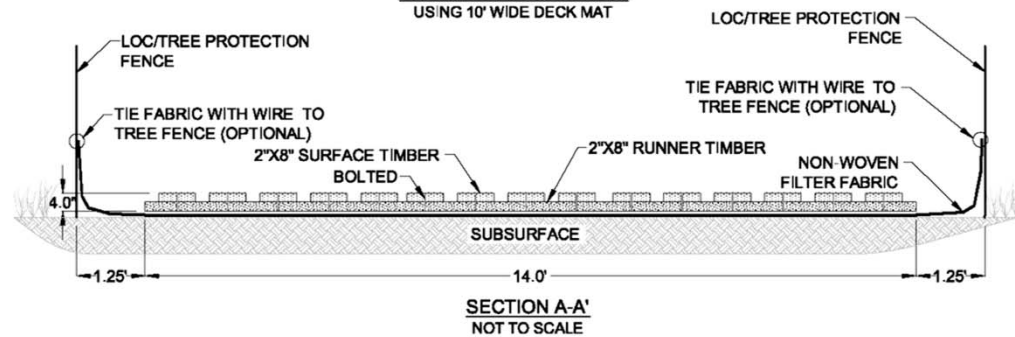
Access Road Deck Mat

ACCESS ROAD DECK MAT NOT TO SCALE



- NOTES:
1. MAT SHALL BE "DECK MAT" BY CAROLINA MAT INCORPORATED OR APPROVED EQUAL.
 2. MATS SHALL BE INSTALLED SUCH THAT THE SURFACE TIMBER RUNS PARALLEL WITH THE VEHICLE TREAD. SUBSEQUENT MATS SHALL BE INSTALLED SUCH THAT THEY BUTT UP AGAINST EACH OTHER.

EXAMPLE INSTALLATION
USING 10' WIDE DECK MAT



Vantage Hill – Time Extension

Per the letter dated June 4, 2012, WSSI requests an approval extension to allow for flexibility in the construction schedule.

Recently approved Colvin Run stream restoration projects were granted a 3-year extension beyond the 18-month typical approval.



Questions

