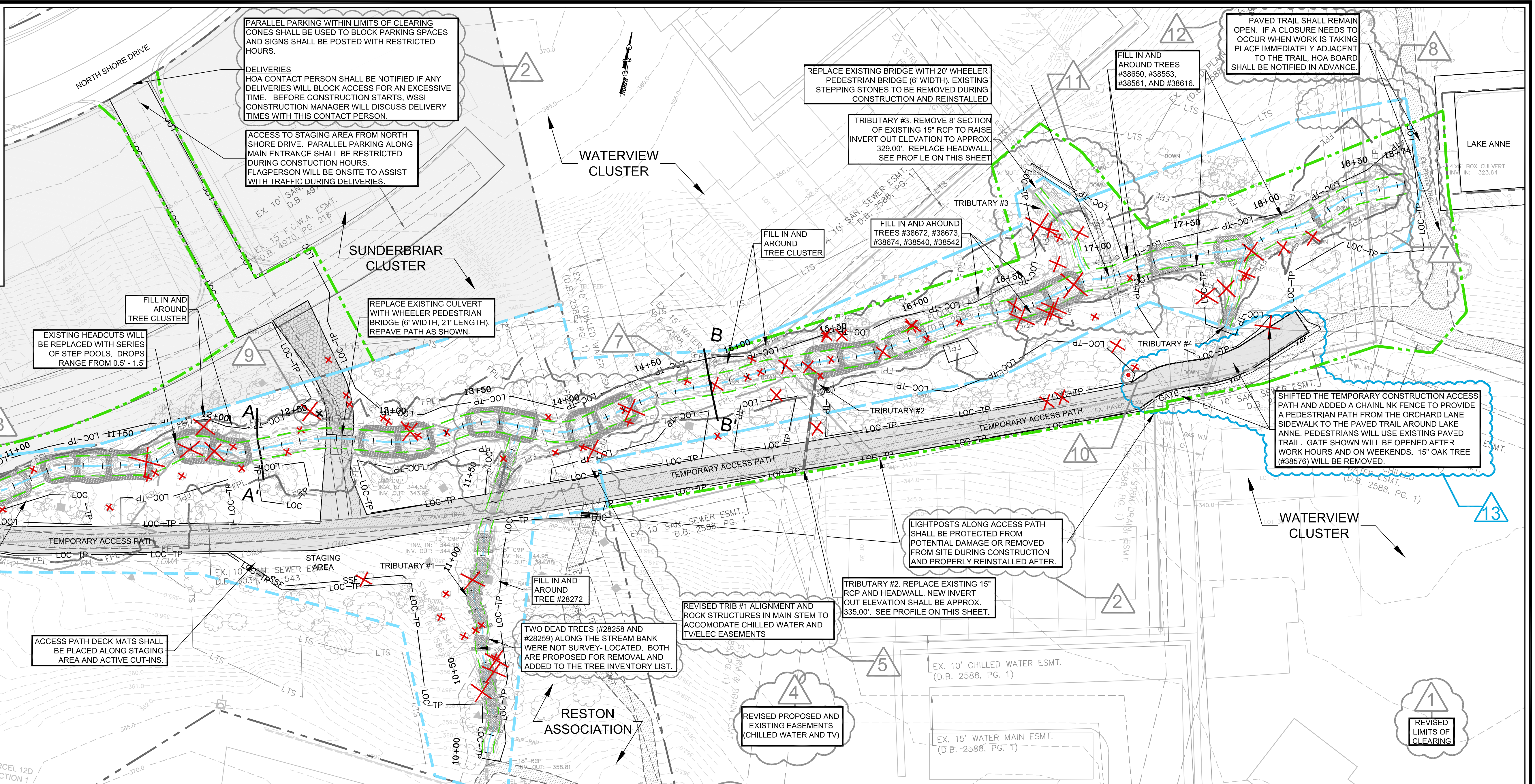
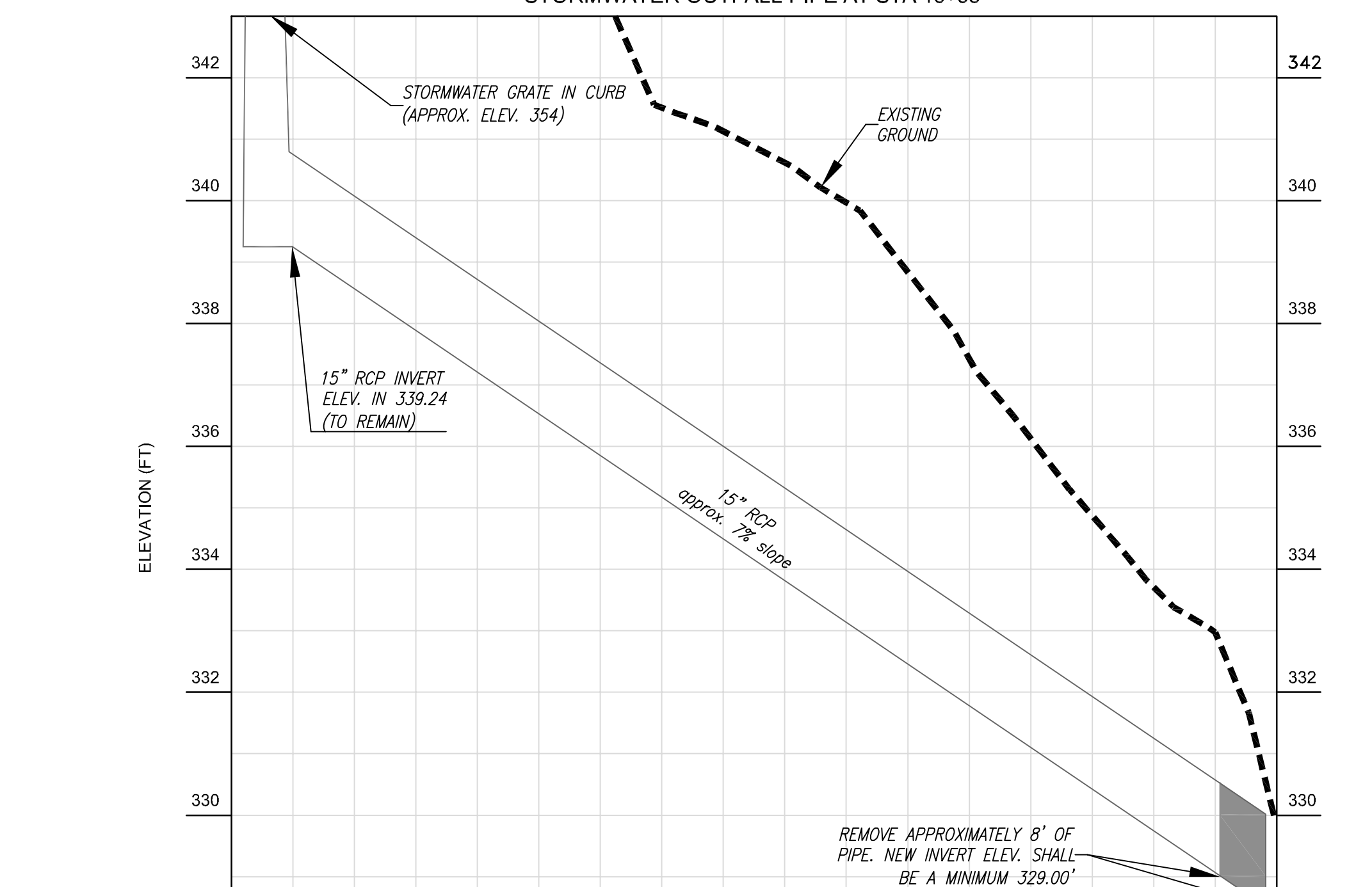
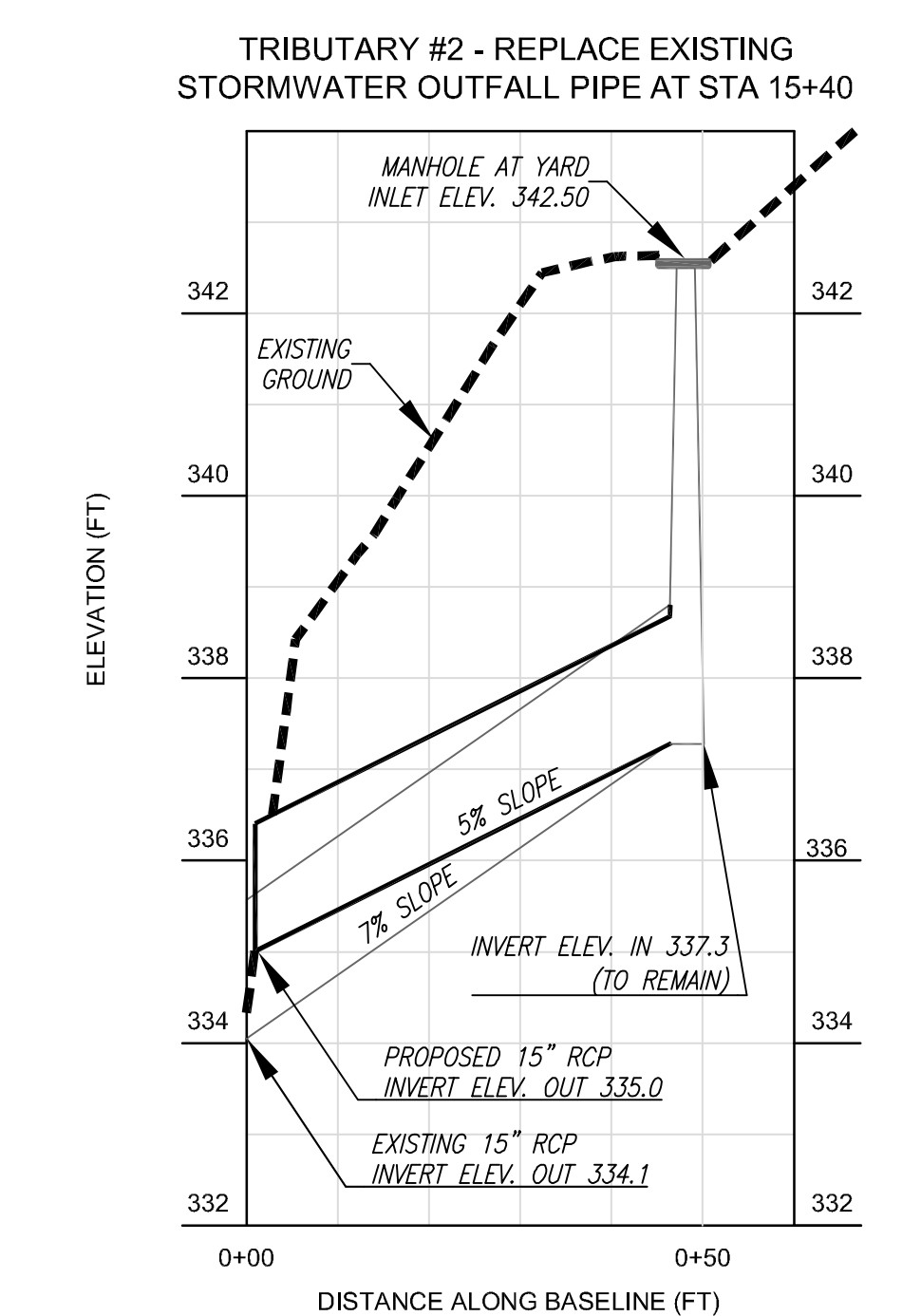
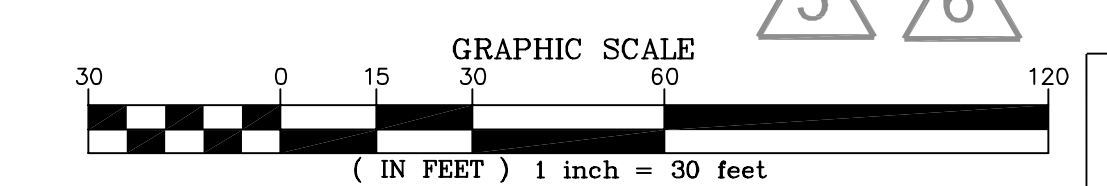
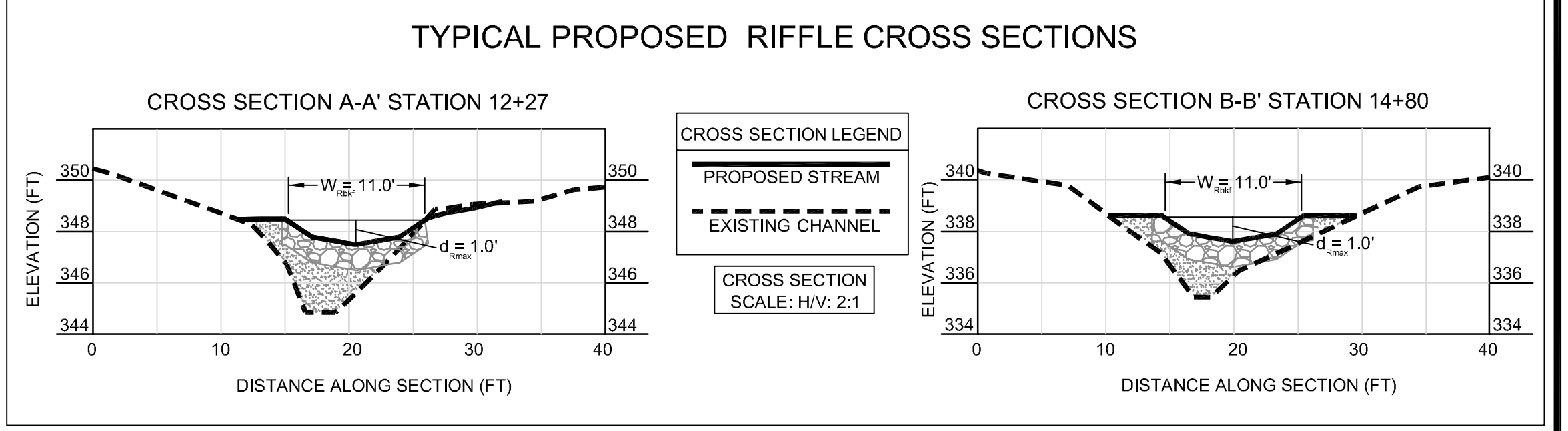


PRELIMINARY PLAN LEGEND	
--- TEMP. GRADING & CONST. ESMNT. & INGRESS-EGRESS ESMNT	▲ NEST
--- PROPOSED STREAM ESMNT	○ CAVITY
--- PROPOSED STREAM ESMNT, TEMP. GRADING & CONST. ESMNT. & INGRESS-EGRESS ESMNT	○ VERNAL POOL
--- EXISTING CONTOURS (0.5')	○ SNAG
--- EXISTING INFRASTRUCTURE	○ DEN
--- FLOODPLAIN EASEMENT	--- ACCESS PATH
--- NON-PERENNIAL STREAM (EXISTING TOP OF BANK)	✗ TREE TO BE REMOVED
--- LTS LIMITS OF TREE SURVEY	--- FPL EXISTING 100-YR FLOOD ELEVATION
--- PROPOSED BANKFULL TOP OF BANK	--- FPL PROPOSED 100-YR FLOOD ELEVATION
--- PROPOSED CENTERLINE	--- LOC-LP LIMITS OF CLEARING/TREE PROTECTION FENCE
--- PROPOSED CONTOURS (0.5')	--- PEDESTRIAN BARRICADE
--- LOMA LIMITS OF MOWED AREA	



STREAM LENGTH:
 LAKE ANNE WEST = 835'
 TRIBUTARY #1 = 167'
 TRIBUTARY #3 = 55'
 TRIBUTARY #4 = 38'
 TOTAL STREAM LENGTH = 1,095'



Northern Virginia Stream Restoration Bank
 Lake Anne West
 Fairfax County, Virginia

Wetland Studies and Solutions, Inc.
 5300 Wellington Branch Drive, Suite 100 • Gainesville, VA 20155
 Phone 703 679 5600 • Fax 703 679 5601
 wetlandstudies.com

Preliminary Plan

Copyright © 2011 Wetland Studies and Solutions, Inc.

REVISIONS				REVISIONS				Boundary and Topo Source:	
No.	Date	Description	Rev. By	App. By	No.	Date	Description	Rev. By	App. By
13	4/20/2011	Revised Const. Access for improved ped. access	KLP	FRG	1	12/16/2011	Revised limits of clearing at access	KLP	FRG
					2	12/16/2011	Added notes	KLP	FRG
					3	12/16/2011	Saved tree (#28359)	KLP	FRG
					4	12/16/2011	Revised ex and proposed easements	KLP	FRG
					5	12/16/2011	Revised alignments and structures	KLP	FRG
					6	2/18/2011	Revised alignments and structures	KLP	FRG
					7	2/18/2011	Reduced grading, saved trees (28286,38600-2,5,38582-7)	KLP	FRG
					8	2/18/2011	Revised Proposed Restoration Easement	KLP	FRG
					9	2/18/2011	Tree will be impacted by access (#28331)	KLP	FRG
					10	2/27/2011	Save holly (#38558), Tree #38565, 6 are down	KLP	FRG
					11	2/27/2011	Revised trib alignment and step pool locations	KLP	FRG
					12	4/11/2011	Revised LOC, easement at Lake Anne	KLP	FRG

DATE: DECEMBER 03, 2010 SCALE: 1" = 30' C.I. = 0.5'

Boundary and Topo Source: WSSI and Fairfax Digital Data

Design Draft Approved

Sheet # 1 of 2

Computer File Name: \\server\projects\2011\12-03-2010\LAKE ANNE WEST\PRELIMINARY PLAN.dwg