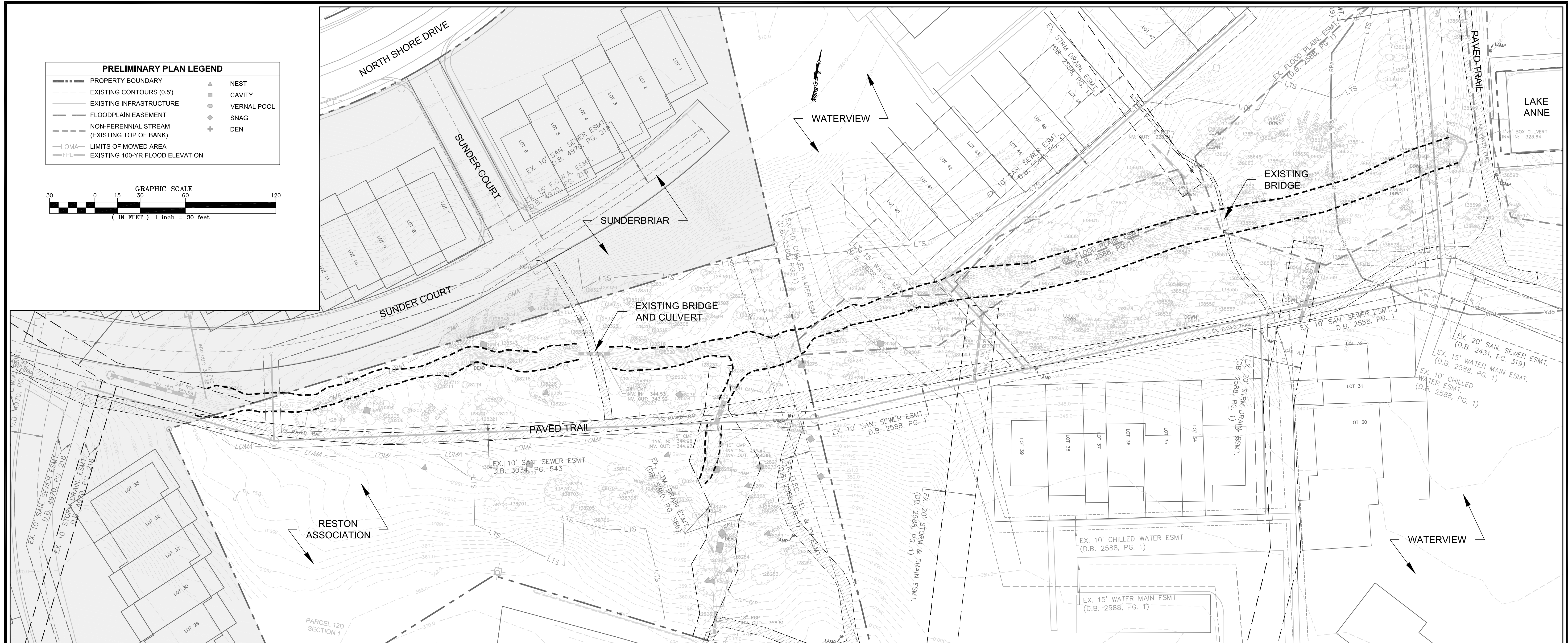
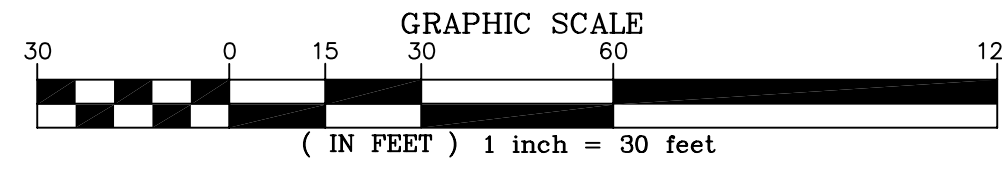


PRELIMINARY PLAN LEGEND	
---	PROPERTY BOUNDARY
- - -	EXISTING CONTOURS (0.5')
---	EXISTING INFRASTRUCTURE
---	FLOODPLAIN EASEMENT
---	NON-PERENNIAL STREAM (EXISTING TOP OF BANK)
---	LOMA
---	LIMITS OF MOWED AREA
---	EXISTING 100-YR FLOOD ELEVATION
▲	NEST
○	CAVITY
●	VERNAL POOL
◆	SNAG
+	DEN



Northern Virginia Stream Restoration Bank
 Lake Anne West
 Fairfax County, Virginia



5300 Wellington Branch Drive, Suite 100 • Gainesville, VA 20155
 Phone 703 679 5600 • Fax 703 679 5601
 wetlandstudies.com

Existing Conditions

Copyright © 2011 Wetland Studies and Solutions, Inc.

H. D.: VCS NAD 83 V. D.: NGVD 29

REVISIONS									
No.	Date	Description	Rev. By	App. By	No.	Date	Description	Rev. By	App. By

Boundary and Topo Source: WSSI and Fairfax Digital Data		
Design	Draft	Approved
KLP	KLP	FRG
Sheet #		
1 of 1		

DATE: DECEMBER 03, 2010 SCALE: 1" = 30' C.I. = 0.5'

Computer File Name:
 EX-COND-PLAN.dwg