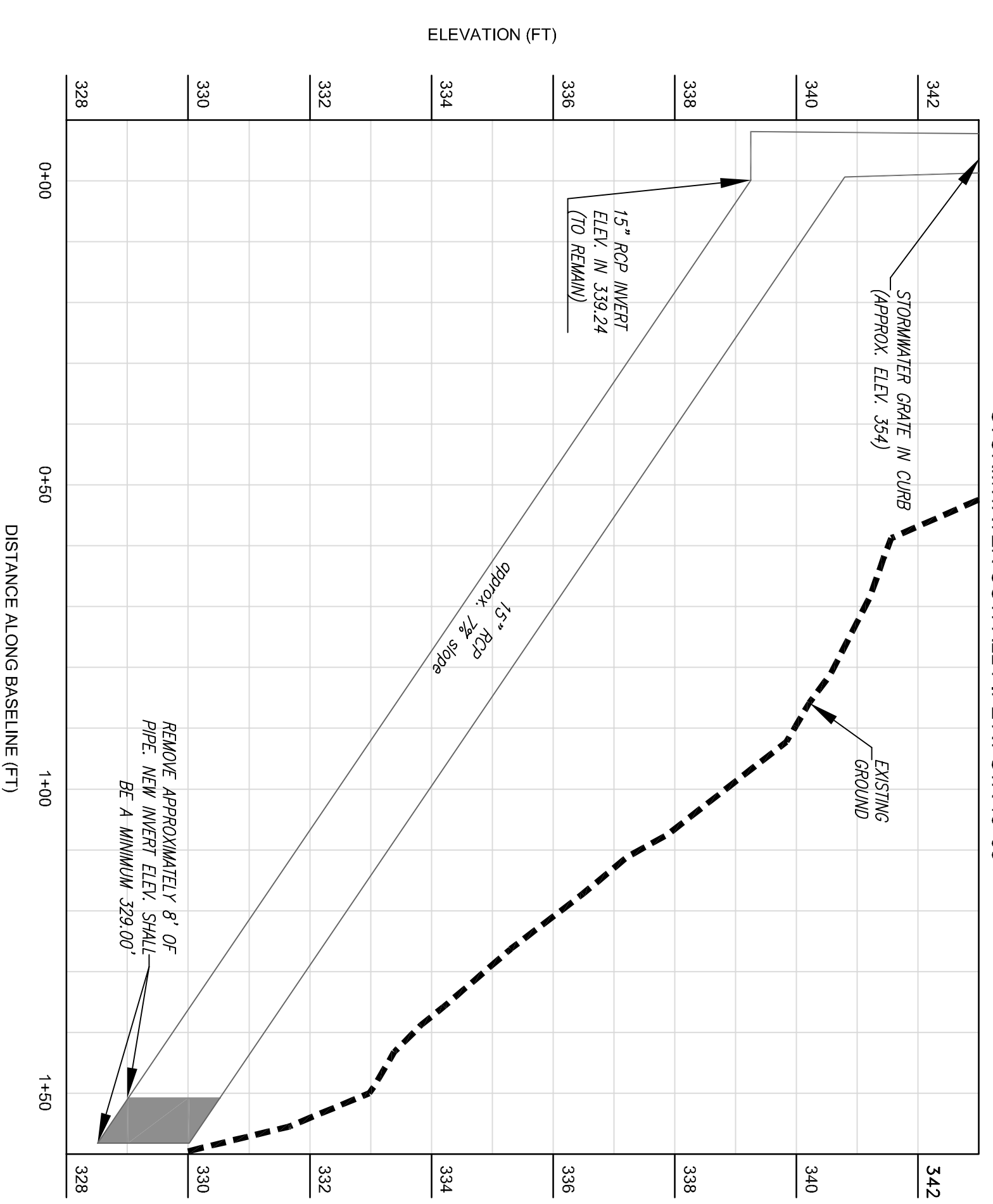
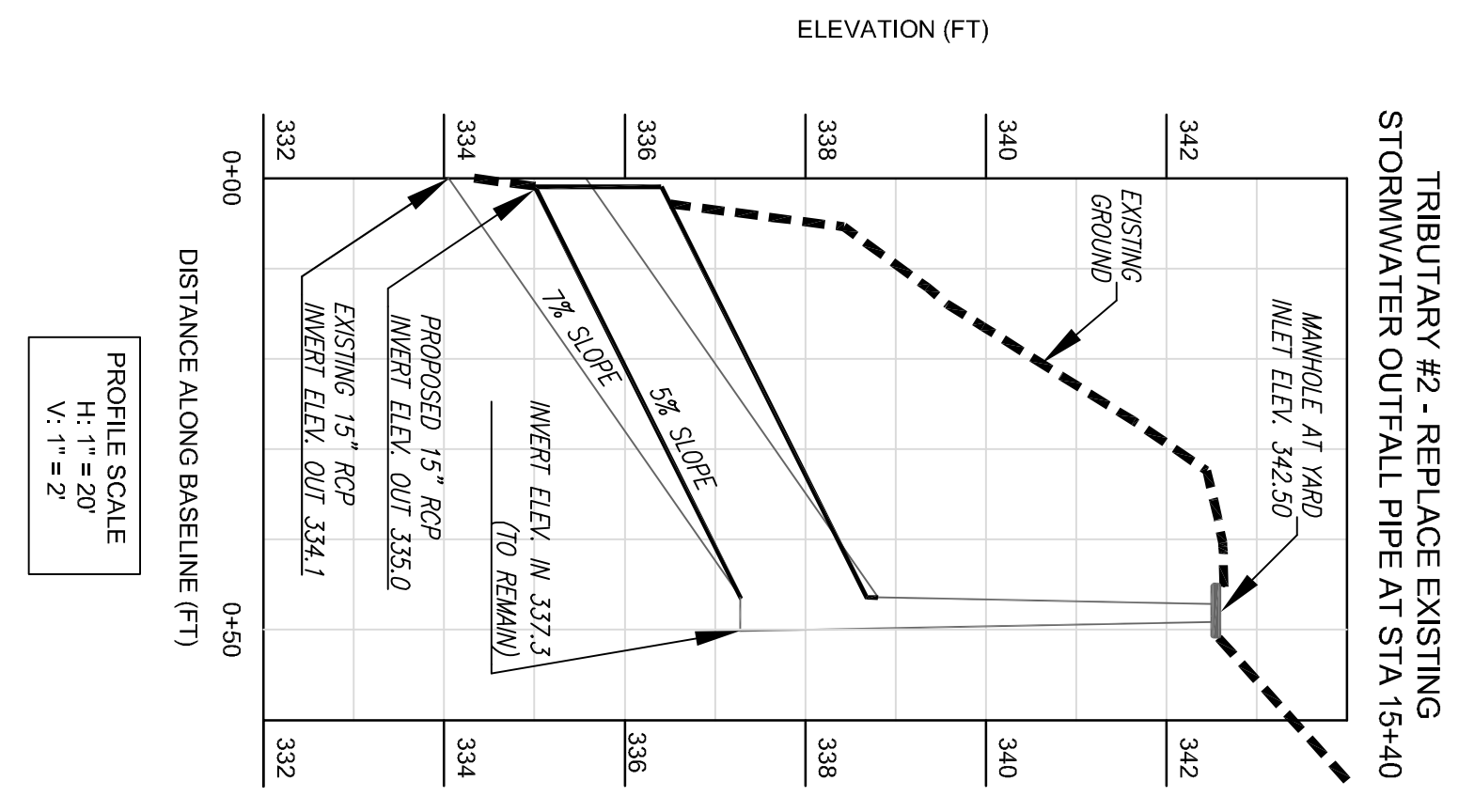
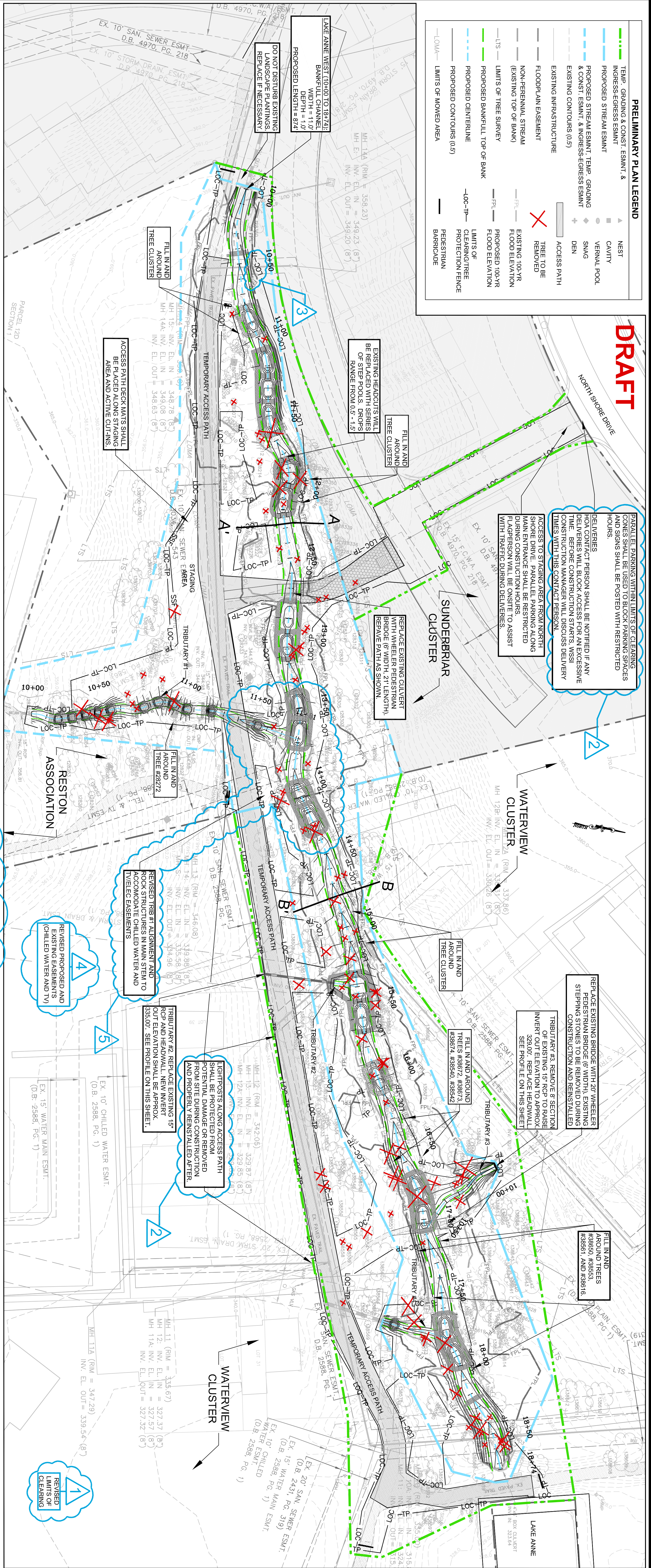


DRAFT

PRELIMINARY PLAN LEGEND

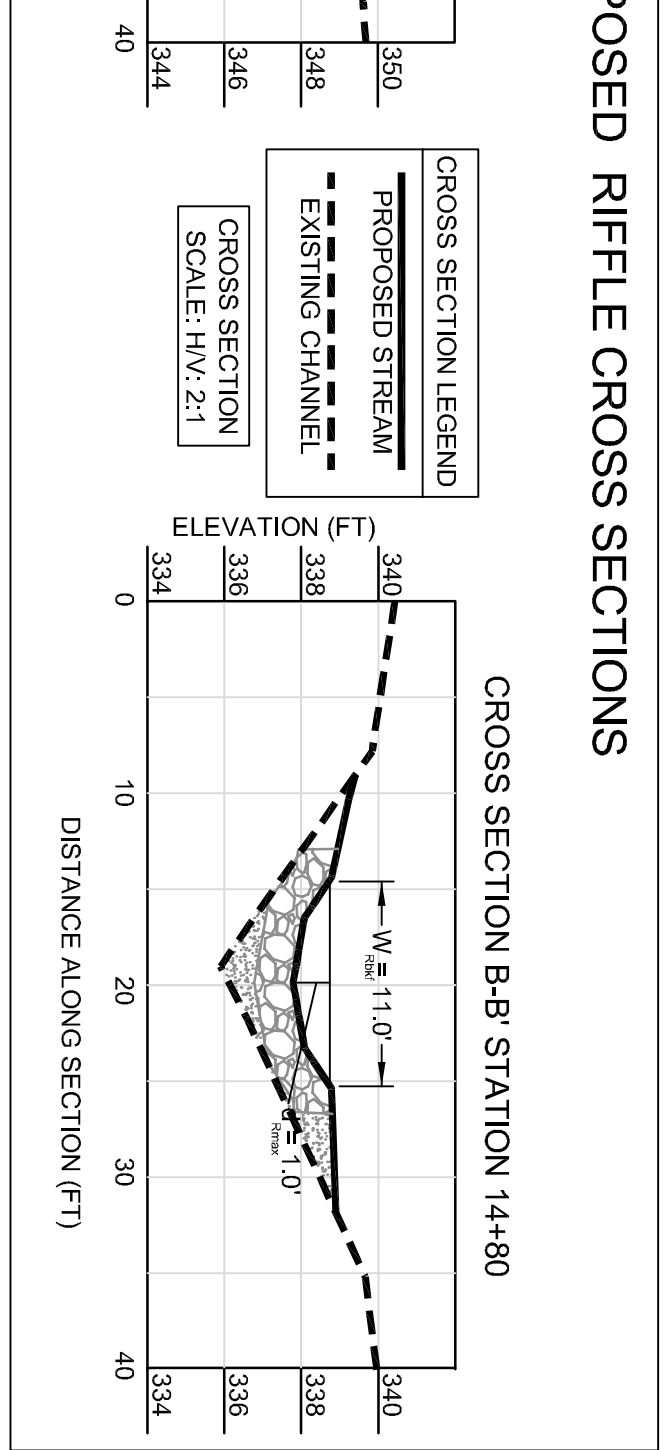
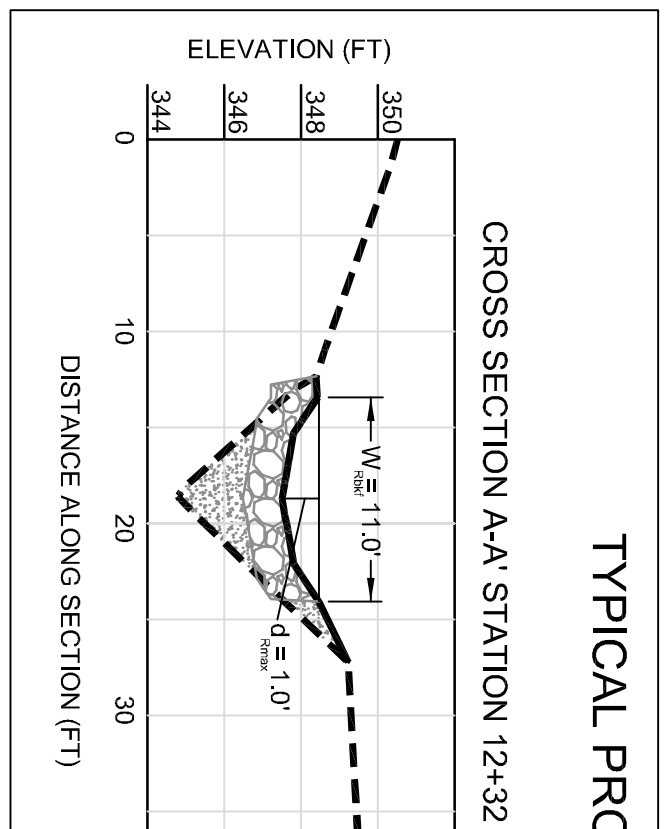
TEMP. GRADING & CONST. ESMNT. & INGRESS-EGRESS ESMNT.	▲	NEST
PROPOSED 5 STREAM ESMNT.	○	CAVITY
PROPOSED STREAM ESMNT.	○	VERNAL POOL
PROPOSED STREAM ESMNT. TEMP. GRADING & CONST. ESMNT. & INGRESS-EGRESS ESMNT.	+	SING
EXISTING CONTOURS (0.5)	○	DEN
EXISTING INFRASTRUCTURE	—	ACCESS PATH
FLOODPLAIN EASEMENT	—	TREE TO BE REMOVED
NON-PERENNIAL STREAM (EXISTING TOP OF BANK)	—	EXISTING 100-YR FLOOD ELEVATION
LTS	—	PROPOSED 100-YR FLOOD ELEVATION
PROPOSED BANK-FULL TOP OF BANK	—	LIMITS OF CLEARING/TREE REMOVAL
PROPOSED CENTERLINE	—	LIMITS OF PROTECTION FENCE
PROPOSED CONTOURS (0.5)	—	PEDESTRIAN BARRICADE
LOMA	—	LIMITS OF MOWED AREA



STREAM LENGTH:

LAKE ANNE WEST	=	874'
TRIBUTARY #1	=	176'
TRIBUTARY #2	=	9'
TRIBUTARY #3	=	55'
TRIBUTARY #4	=	38'
TOTAL STREAM LENGTH	=	1,152'

GRAPHIC SCALE
1 inch = 30 feet



Northern Virginia Stream Restoration Bank
Lake Anne West
Fairfax County, Virginia

Preliminary Plan

Copyright © 2011 Wetland Studies and Solutions, Inc.

No.	Date	Description	Rev. App. By	No.	Date	Description	Rev. App. By
1	12/16/2011	Revised limits of clearing at access	KLP FRG	1		Boundary and Topo Source	WSSJ and Fairfax Digital Data
2	12/16/2011	Added notes	KLP FRG	2		Design	Draft
3	12/16/2011	Saved tree (#28359)	KLP FRG	3		Draft	Approved
4	12/16/2011	Revised ex and proposed easements	KLP FRG	4			
5	12/16/2011	Revised alignments and structures	KLP FRG	5			

DATE: DECEMBER 03, 2010 SCALE: 1" = 30' C.I. = 0.5'

Computer File Name: 1 of 2

Wetland
5300 Wellington Branch Drive, Suite 100 • Gainesville, VA 20155
Phone: 703.679.5600 • Fax: 703.679.5601
wetlandstudies.com