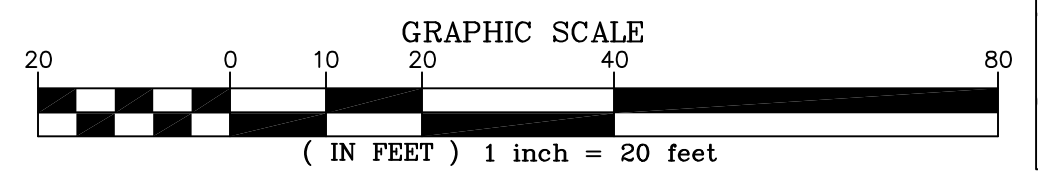


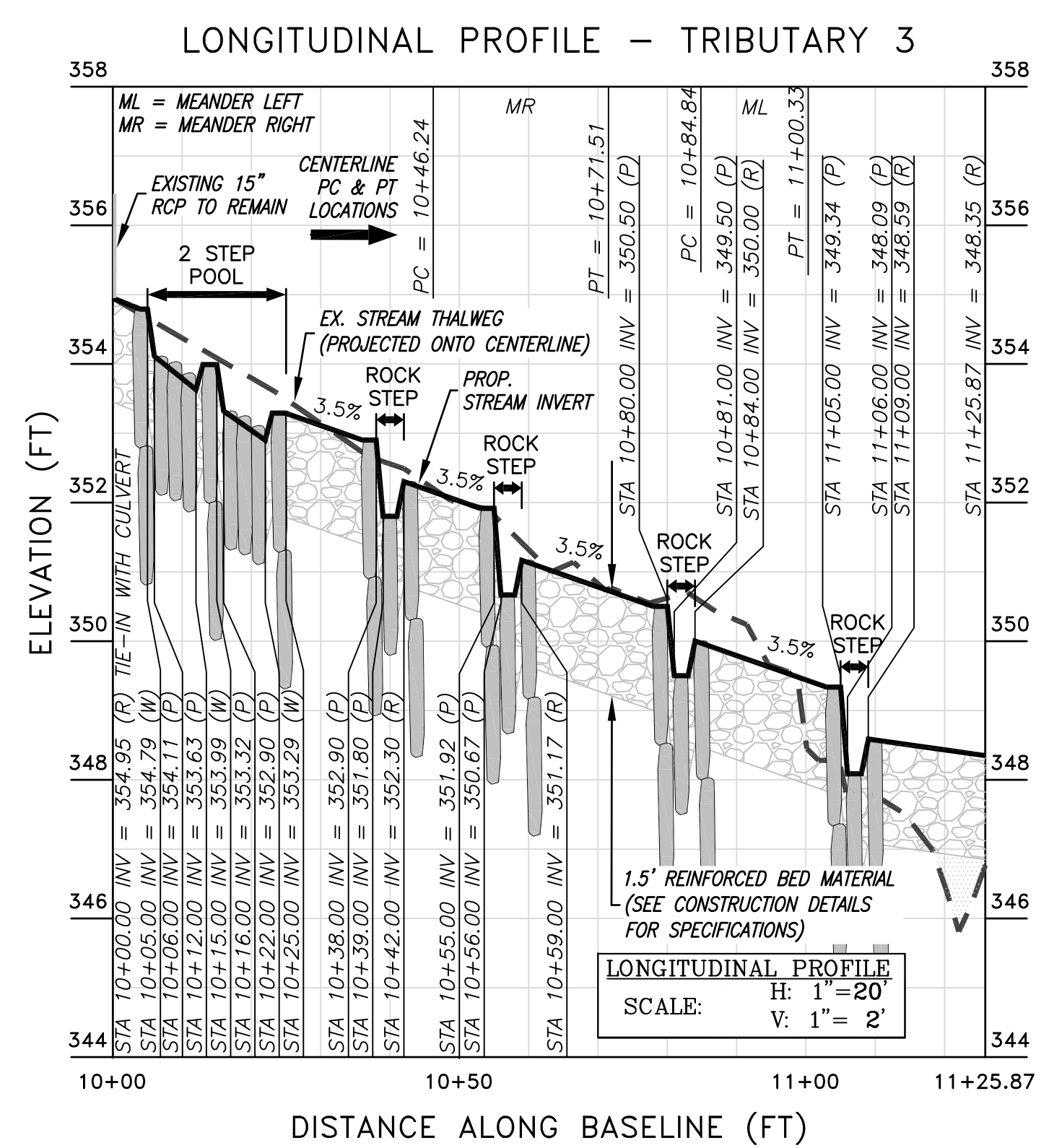
### GRADING LEGEND

---	PROPERTY BOUNDARY		PROPOSED ROCK STEP
- - -	COMBINED PROPERTY BOUNDARY, STREAM ESMNT, AND TEMP. GRADING & CONST. / INGRESS-EGRESS ESMNT		PROPOSED IMBRICATED ROCK WALL
- - -	COMBINED STREAM ESMNT AND TEMP. GRADING & CONST. / INGRESS-EGRESS ESMNT		PROPOSED STEP POOL
- · - · -	TEMP. GRADING & CONSTRUCTION ESMNT / INGRESS-EGRESS ESMNT		ACCESS PATH
- - -	EXISTING EASEMENTS	---	LIMITS OF CLEARING
- - -	EXISTING INFRASTRUCTURE	-X-CLF-	CHAINLINK FENCE
- - -	EXISTING CONTOURS (0.5')		
- - -	PROPOSED CONTOURS (0.5')		
- - -	NONPERENNIAL STREAM (EXISTING TOP OF BANK)		
- - -	PROPOSED CENTERLINE		
- - -	PROPOSED TOP OF BANK		
-LOC-TP-	LIMITS OF CLEARING / TREE PROTECTION		



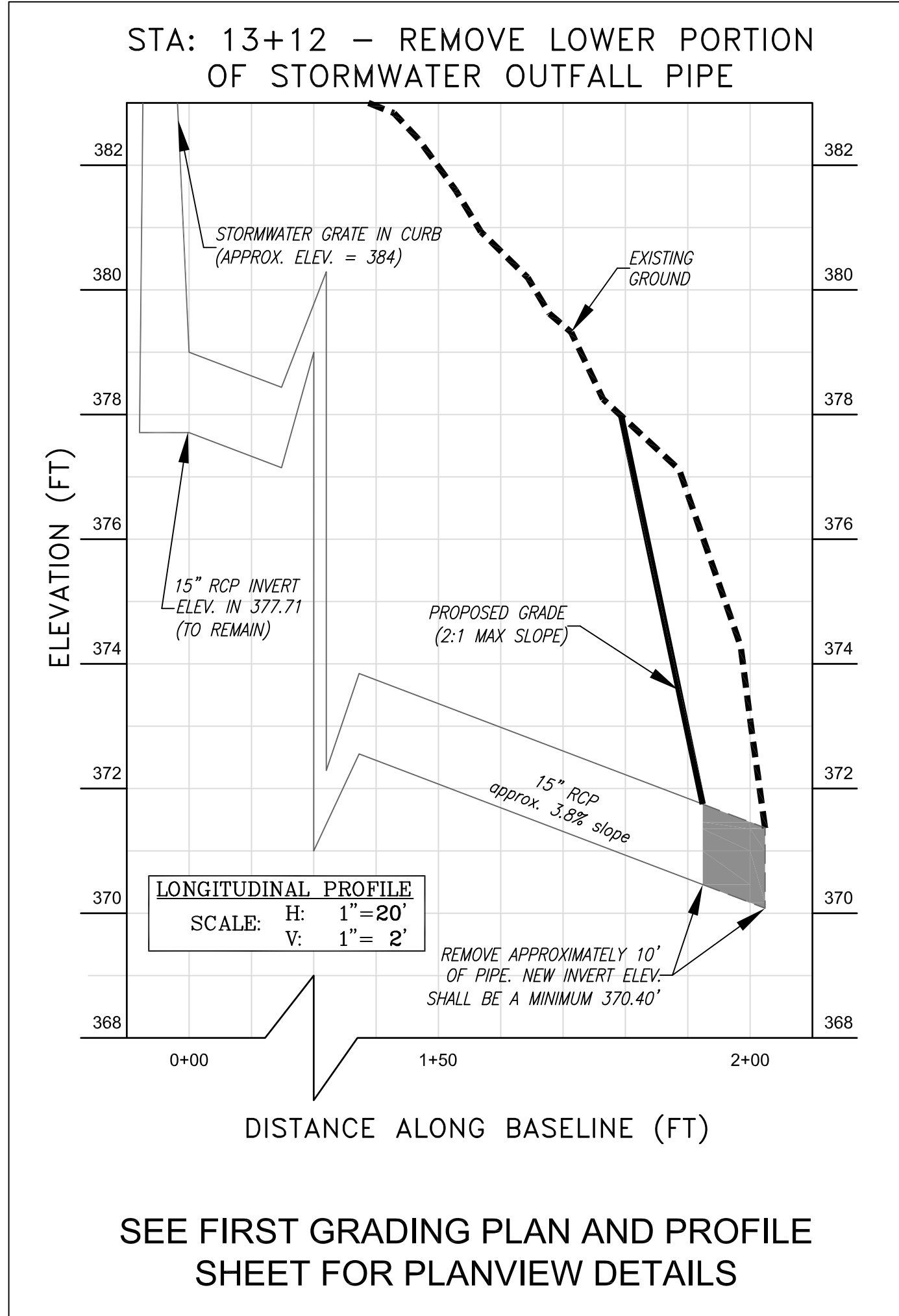
### PROFILE LEGEND

---	EXISTING STREAM INVERT PROJECTED TO PROPOSED CENTERLINE
- - -	PROPOSED STREAM INVERT ALONG PROPOSED CENTERLINE
	STRUCTURE ROCKS
	REINFORCED BED
	EARTH FILL
PC = 0+37.66	PT = 0+96.52
MR	PC & PT LOCATIONS WITH LINE OR CURVE DESIGNATION REFERENCED FROM STAKEOUT DATA



- #### GRADING NOTES:
- PROPOSED CONTOURS ARE INTENDED TO DEPICT OVERALL GRADING CONCEPT. DUE TO IRREGULARITY OF ROCK SHAPES, CONTOURS DEPICTING POOL GRADING WITHIN STRUCTURES ARE APPROXIMATE. SPECIFICATIONS FOR GRADING IN VICINITY OF STRUCTURES ARE PROVIDED IN TYPICAL SECTIONS AND CONSTRUCTION DETAILS. THE SPECIFICATIONS IN THE CONSTRUCTION DETAILS TAKE PRECEDENCE OVER THE CONTOURS DEPICTED ON THE GRADING PLAN.
  - TREE PROTECTION FENCING SHALL BE PLACED AROUND ALL AREAS OF TREES TO BE PRESERVED ADJACENT TO THE LIMITS OF CLEARING AND GRADING.
  - IT IS ASSUMED THAT ALL TREES WITHIN THE LIMITS OF CLEARING WILL NOT BE REMOVED. PRIOR TO CONSTRUCTION THE LIMITS OF CLEARING (LOC) SHALL BE WALKED BY WSSI STAFF TO CONFIRM TREE REMOVAL. IN THE EVENT THAT THE CONTRACTOR BELIEVES A TREE WITHIN THE LOC COULD BE SAVED, THE CONTRACTOR SHALL CONTACT WETLAND STUDIES AND SOLUTIONS, INC. AND HAVE THE PROJECT ENGINEER DETERMINE IF THE TREE SHOULD BE SAVED OR REMOVED.
  - REFER TO THE GEOMETRY PLAN FOR TRAVERSE LOCATIONS AND ELEVATIONS.
  - ALL STREAM BEDS REQUIRE 1.5 FT OF REINFORCED BED MATERIAL. FOR CLARITY IT IS NOT SHOWN IN STREAM BEDS WHERE GRADING IS DEPICTED.

- #### CONSTRUCTION ACCESS NOTES:
- ACCESS TO THE STAGING AREA WILL BE FROM INLET COURT.
  - CONSTRUCTION TRAFFIC ON INLET COURT SHOULD BE LIMITED TO MATERIALS AND EQUIPMENT DELIVERIES ONLY. CONSTRUCTION STAFF PARKING IS PROVIDED IN THE RESTON ASSOCIATION PAVILION PARKING AREA ADJACENT TO NORTH SHORE DRIVE.
  - CARE SHOULD BE TAKEN TO MINIMIZE DAMAGE TO SLOPE DRAINS AND VEGETATION ALONG THE EXISTING TOE OF SLOPE ADJACENT TO THE ACCESS ROAD AND INLET CLUSTER PROPERTY. CONTRACTOR IS RESPONSIBLE FOR REPAIRING ANY DAMAGE TO DRAINS. FOLLOWING CONSTRUCTION, TRAILSIDE AREAS ALONG THE TOE OF SLOPE SHALL BE SEEDED AND STABILIZED USING NATURAL FIBER MATTING. SEE PLANTING PLAN FOR DETAILS.



5300 Wellington Branch Drive, Suite 100 • Gainesville, VA 20155  
Phone: 703 679 5600 • Fax: 703 679 5601  
wetlandstudies.com

Northern Virginia Stream Restoration Bank  
Lake Anne East  
Fairfax County, Virginia

Grading Plan and Longitudinal Profile (cont'd)

Copyright © 2012 Wetland Studies and Solutions, Inc.

REVISIONS		App. By	Scale
No.	Description		

DATE: MARCH 2012      SCALE: 1" = 20'

Horizontal Datum: VCS NAD 83  
Vertical Datum: NGVD 29  
Boundary and Topo Source: WSSI and Fairfax Digital Data

Design	Draft	Approved
NAS	NAS	FRG

Sheet #  
5 of 49

Computer File Name: 1:2006/2010/02/CASD/04/ENG/10/Plan/GRADING PLAN & PROFILE 10-10.dwg





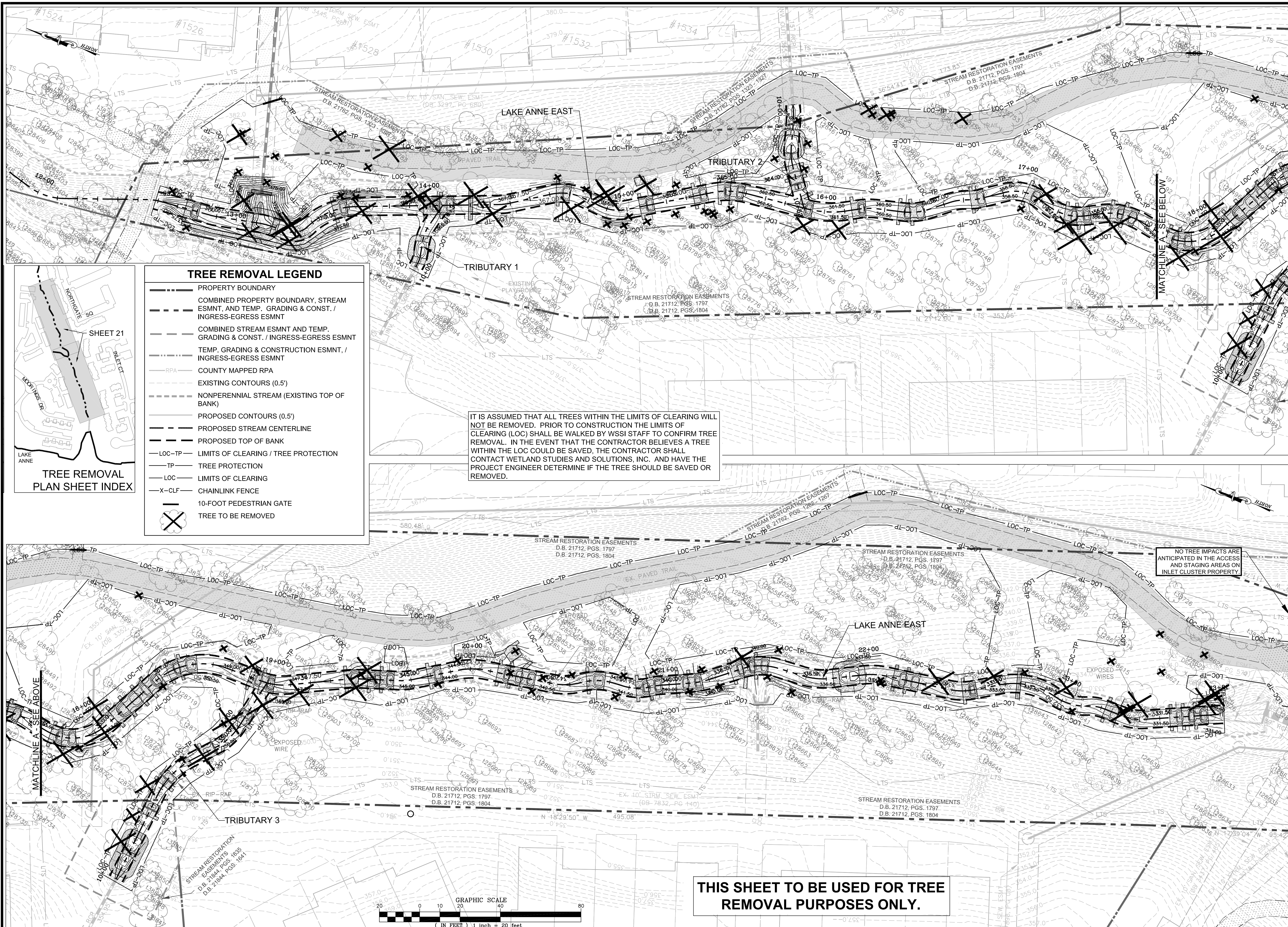


LAKE ANNE EAST VEGETATION SCHEDULE

PLANTING SCHEDULE										PLANTING QUANTITIES (BASED ON ONE-GALLON SIZE) <sup>4</sup>										
CONTAINER PLANTING ZONE	SPECIES GROUP <sup>1,2</sup>	SPECIES <sup>2</sup>	INDICATOR STATUS	WILDLIFE VALUE				PLANT SPACING <sup>3</sup>	CONTAINER SIZE, RATE, AND QUANTITY <sup>4</sup>		AREA (SF): AREA (AC): LENGTH (LF):	A	B	C	D	E	F	G	H	J
				FUNCTIONS	PRIMARY SPECIES	PLANT PART	SEASON		# OF PLANTS	# OF PLANTS										
RIPARIAN FOREST	TREE LAYER	QUERCUS ALBA (WHITE OAK)	FACW	Food	Blue jays, woodpeckers, turkey, deer, fox, raccoons, squirrels, other small mammals	Nuts	Fall, Winter	SEE NOTE #3	300 ONE-GAL - or - 600 TUBELINGS - or - MX AT 1:2 RATIO (SEE NOTE #4)	102 (BASED ON ONE-GALLON)	-	-	72	27	3	-	-	-	-	
		QUERCUS PALUSTRIS (PIN OAK)	FACW	Food																
		QUERCUS PHELLOS (WILLOW OAK)	FAC+	Food																
		QUERCUS RUBRA (NORTHERN RED OAK)	FACU-	Food																
	SHRUB LAYER	ACER NEGUNDO (BOX ELDER)	FAC+	Food	Finches, chickadees, squirrels, robins, goldfinches, other birds	Seeds, buds, flowers, plant	Spring, summer	SEE NOTE #3	150 ONE-GALLON - or - 300 TUBELINGS - or - MX AT 1:2 RATIO (SEE NOTE #4)	129 (BASED ON ONE-GALLON)	-	-	36	14	-	5	6	36	32	
		ACER RUBRUM (RED MAPLE)	FAC	Food	Finches, chickadees, squirrels, robins, goldfinches, other birds	Seeds, buds, flowers, plant	Spring, summer	SEE NOTE #3	150 ONE-GALLON - or - 300 TUBELINGS - or - MX AT 1:2 RATIO (SEE NOTE #4)	129 (BASED ON ONE-GALLON)	-	-	36	14	-	5	6	36	32	
		BETULA NIGRA (RIVER BIRCH)	FACW	Food, cover	Song birds	Seeds, plant	All	SEE NOTE #3	150 ONE-GALLON - or - 300 TUBELINGS - or - MX AT 1:2 RATIO (SEE NOTE #4)	129 (BASED ON ONE-GALLON)	-	-	36	14	-	5	6	36	32	
		LIQUIDAMBAR STYRACIFLUA (SWEET GUM)	FAC	Food	Finches, cardinals, chickadees, sparrows, squirrels	Seed	Summer, fall, winter	SEE NOTE #3	150 ONE-GALLON - or - 300 TUBELINGS - or - MX AT 1:2 RATIO (SEE NOTE #4)	129 (BASED ON ONE-GALLON)	-	-	36	14	-	5	6	36	32	
	SHRUB LAYER	ILEX OPACA (AMERICAN HOLLY)	FACU+	Food, cover, reproductive areas	Robins, bluebirds, mockjays, hermit thrush	Fruit, plant	All	SEE NOTE #3	ONE-GALLON - or - 200 TUBELINGS - or - MX AT 1:2 RATIO (SEE NOTE #4)	85 (BASED ON ONE-GALLON)	-	-	24	9	-	3	4	24	21	
		AMELANCHIER CANADENSIS (CANADIAN SERVICEBERRY)	FAC	Food, cover	Song birds, small mammals	Fruit, plant	All	SEE NOTE #3	ONE-GALLON - or - 200 TUBELINGS - or - MX AT 1:2 RATIO (SEE NOTE #4)	85 (BASED ON ONE-GALLON)	-	-	24	9	-	3	4	24	21	
		CERCIS CANADENSIS (EASTERN REDBUD)	FACU-	Food	Honeybees, butterfly caterpillars	Flowers, leaves	Spring, summer	SEE NOTE #3	ONE-GALLON - or - 200 TUBELINGS - or - MX AT 1:2 RATIO (SEE NOTE #4)	85 (BASED ON ONE-GALLON)	-	-	24	9	-	3	4	24	21	
		CORNUS FLORIDA (FLOWERING DOGWOOD)	FACU-	Food	Wild turkey, cardinal, cedar waxwing, robin, brown thrasher, wood thrush, rabbits	Flower, fruit	Spring, fall	SEE NOTE #3	ONE-GALLON - or - 200 TUBELINGS - or - MX AT 1:2 RATIO (SEE NOTE #4)	85 (BASED ON ONE-GALLON)	-	-	24	9	-	3	4	24	21	
SHRUB LAYER	CORYLUS AMERICANA (AMERICAN HAZELNUT)	FACU-	Food, cover	Songbirds, small mammals	Fruit	Summer, fall	SEE NOTE #3	ONE-GALLON - or - 200 TUBELINGS - or - MX AT 1:2 RATIO (SEE NOTE #4)	85 (BASED ON ONE-GALLON)	-	-	24	9	-	3	4	24	21		
	LINDERA BENZONI (NORTHERN SPICEBUSH)	FACW-	Food	Thrushes vireos, catbird, bluebird, butterfly caterpillars	Fruit, leaves	Spring, summer, fall	SEE NOTE #3	ONE-GALLON - or - 200 TUBELINGS - or - MX AT 1:2 RATIO (SEE NOTE #4)	85 (BASED ON ONE-GALLON)	-	-	24	9	-	3	4	24	21		
	VBURNUM DENTATUM (SOUTHERN ARROWWOOD)	FAC	Food	Robins, bluebirds, other thrushes, thrashers, catbirds, vireos	Fruit	Fall	SEE NOTE #3	ONE-GALLON - or - 200 TUBELINGS - or - MX AT 1:2 RATIO (SEE NOTE #4)	85 (BASED ON ONE-GALLON)	-	-	24	9	-	3	4	24	21		
	VBURNUM PRUNIFOLIUM (BLACK-HAW)	FACU	Food, cover	Catbirds, thrashers, thrushes, cover and nest sites for songbirds	Fruit, plant	Spring, fall	SEE NOTE #3	ONE-GALLON - or - 200 TUBELINGS - or - MX AT 1:2 RATIO (SEE NOTE #4)	85 (BASED ON ONE-GALLON)	-	-	24	9	-	3	4	24	21		
<b>RIPARIAN FOREST QUANTITY SUBTOTALS</b>										445			168	64	3	13	16	96	85	
STREAM BANK	TREE AND SHRUB LAYER	CORNUS AMOMUM (SILKY DOGWOOD)	FACW	Food	Catbird, thrasher, thrushes, woodpeckers	Fruit	Summer, fall	SEE NOTE #3 (AVERAGES 3' O C FOR ONE-GALLON)	N/A	405 (BASED ON ONE-GALLON)	214	196	-	-	-	192	273	-	-	
		ILEX VERTICILLATA (COMMON WINTERBERRY)	FACW+	Food, cover, reproductive areas	Bluebird, catbird, brown thrasher, robin, yellow bellied sapsucker, mockingbird	Flower, seed, leaves	All	SEE NOTE #3 (AVERAGES 3' O C FOR ONE-GALLON)	N/A	405 (BASED ON ONE-GALLON)	214	196	-	-	-	192	273	-	-	
		SAMBUCUS CANADENSIS (ELDERBERRY)	FACW-	Food, cover	Brown thrasher, catbird, woodpeckers, thrashers	Seed	Spring, fall, winter	SEE NOTE #3 (AVERAGES 3' O C FOR ONE-GALLON)	N/A	405 (BASED ON ONE-GALLON)	214	196	-	-	-	192	273	-	-	
		VBURNUM DENTATUM (SOUTHERN ARROWWOOD)	FAC	Food, cover, reproductive areas	Purple finch, goldfinch, robin, junco, bluebird, hermit thrush	Flower, fruit	Spring, summer, fall	SEE NOTE #3 (AVERAGES 3' O C FOR ONE-GALLON)	N/A	405 (BASED ON ONE-GALLON)	214	196	-	-	-	192	273	-	-	
<b>STREAM BANK QUANTITY SUBTOTALS</b>										875	214	196	-	-	-	192	273	-	-	
STREAM EDGE	TREE AND SHRUB LAYER	CORNUS AMOMUM (SILKY DOGWOOD)	FACW	Food, cover, reproductive areas	Catbird, thrasher, thrushes, cedar waxwings, rabbits	Flower, fruit	Summer, fall, winter	SEE NOTE #3 (AVERAGES 3' O C FOR ONE-GALLON)	N/A	1,395 (TUBELINGS OR LIVESTAKES ONLY - SEE NOTE #5)	625	589	-	-	-	576	819	-	-	
		SALIX NIGRA (BLACK WILLOW)	FACW+	Food, cover	Beaver, porcupine, deer, muskrat, ducks, fish	Seeds, plant, leaves	Spring, summer, fall	SEE NOTE #3 (AVERAGES 3' O C FOR ONE-GALLON)	N/A	1,395 (TUBELINGS OR LIVESTAKES ONLY - SEE NOTE #5)	625	589	-	-	-	576	819	-	-	
		ALNUS SERRULATA (BROOKSIDE ALDER)	OBL	Food, reproductive areas	Finches, sparrows, doves, yellow warbler, song sparrow, other songbirds	Seeds, buds, stems	Summer, fall, winter	SEE NOTE #3 (AVERAGES 3' O C FOR ONE-GALLON)	N/A	1,395 (TUBELINGS OR LIVESTAKES ONLY - SEE NOTE #5)	625	589	-	-	-	576	819	-	-	
		VBURNUM DENTATUM (SOUTHERN ARROWWOOD)	FAC	Food	Robins, bluebirds, other thrushes, thrashers, catbirds, vireos	Fruit	Fall	SEE NOTE #3 (AVERAGES 3' O C FOR ONE-GALLON)	N/A	1,395 (TUBELINGS OR LIVESTAKES ONLY - SEE NOTE #5)	625	589	-	-	-	576	819	-	-	
<b>STREAM EDGE QUANTITY SUBTOTALS</b>										4,003	625	589	-	-	-	1,152	1,638	-	-	

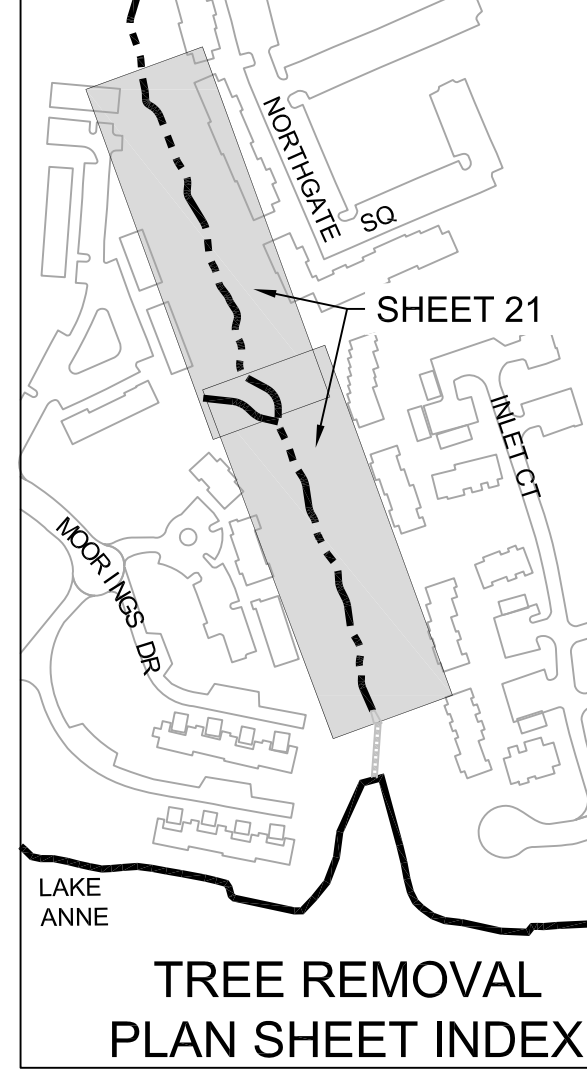
SEEDING SCHEDULE										SEEDING QUANTITIES										
SEED PLANTING ZONE	SPECIES GROUP <sup>1,2</sup>	SPECIES <sup>2</sup>	INDICATOR STATUS	WILDLIFE VALUE				SEEDING RATE <sup>1</sup> (LBS/AC)	AREA PER PLANT (AC)	QUANTITY (LBS)	AREA (SF): AREA (AC):	A	B	C	D	E	F	G	H	J
				FUNCTIONS	PRIMARY SPECIES	PLANT PART	SEASON													
RIPARIAN BUFFER SEED MIX	7	LOLUM MULTIFLORUM (ANNUAL RYEGRASS)	NI	Erosion control, food	Sparrows, finches, small mammals	Seeds	Summer, fall	45.00	0.92	41.40	1.35	1.35	10.80	4.05	0.45	1.35	1.80	10.80	9.45	
		SETARIA ITALICA (FOXTAIL MILLET)	UPL	Food	Sparrows, finches, small mammals	Seeds	Fall, winter	45.00	0.92	41.40	1.35	1.35	10.80	4.05	0.45	1.35	1.80	10.80	9.45	
	8	CAREX SCOPARIA (BLUNT BROOM SEDGE)	FACW	Food, cover	Song birds (esp. sparrows), small mammals	Seeds, plant	Summer, fall	0.20	0.92	0.20	0.01	0.01	0.05	0.02	0.00	0.01	0.01	0.05	0.04	
		CAREX SQUARROSA (SQUARROSE SEDGE)	NI	Food	Song birds, waterfowl	Seeds	Summer, fall	0.20	0.92	0.20	0.01	0.01	0.05	0.02	0.00	0.01	0.01	0.05	0.04	
		CAREX VULPINOIDEA (FOX SEDGE)	OBL	Food	Song birds, waterfowl	Seeds	Summer, fall	0.20	0.92	0.20	0.01	0.01	0.05	0.02	0.00	0.01	0.01	0.05	0.04	
		CYPERUS ESCULENTUS (CHUFA)	FACW	Food	Song birds, waterfowl	Seeds	Summer, fall	0.20	0.92	0.20	0.01	0.01	0.05	0.02	0.00	0.01	0.01	0.05	0.04	
	9	JUNCUS EFFUSUS (SOFT RUSH)	FACW+	Food, cover, reproductive areas	Waterfowl, songbirds (esp. sparrows), bluegill and other fish	Seeds, stems	Summer, fall, winter	0.20	0.92	0.20	0.01	0.01	0.05	0.02	0.00	0.01	0.01	0.05	0.04	
		JUNCUS TENUIS (PATH RUSH)	FAC-	Food	Songbirds, small mammals	Seeds	Summer, fall	0.20	0.92	0.20	0.01	0.01	0.05	0.02	0.00	0.01	0.01	0.05	0.04	
		ELYMUS RIPARIUS (RIVERBANK WILD RYE)	FACW	Food	Song birds, small mammals	Seeds, leaves	All	10.00	0.92	9.20	0.30	0.30	2.40	0.90	0.10	0.30	0.40	2.40	2.10	
		ELYMUS VIRGINICUS (VIRGINIA WILD RYE)	FACW-	Food	Deer, sparrows, small mammals	Seeds, leaves	All	10.00	0.92	9.20	0.30	0.30	2.40	0.90	0.10	0.30	0.40	2.40	2.10	
	10	PANICUM CLANDESTINUM (DEER TONGUE GRASS)	FAC+	Food	Song birds, waterfowl, small mammals	Seeds	Summer, fall	10.00	0.92	9.20	0.30	0.30	2.40	0.90	0.10	0.30	0.40	2.40	2.10	
		PANICUM DICHOTOMIFLORUM (SMOOTH PANIC GRASS)	FACW-	Food	Song birds, waterfowl, small mammals	Seeds	Summer, fall	10.00	0.92	9.20	0.30	0.30	2.40	0.90	0.10	0.30	0.40	2.40	2.10	
ANEMONE VIRGINIANA (THIMBLEWEED)		NI	Food	Pollinators, butterflies, beneficial insects	Flowers	Spring, summer	0.10	0.92	0.07	0.00	0.00	0.02	0.01	0.00	0.00	0.00	0.02	0.02		
ASTER NOVAE-ANGLAE (NEW ENGLAND ASTER)		FACW-	Food	Butterflies	Flowers	Summer, fall	0.10	0.92	0.07	0.00	0.00	0.02	0.01	0.00	0.00	0.00	0.02	0.02		
11	ASTER PILOSUS (HEATH ASTER)	UPL	Food	Butterflies	Flowers	Summer, fall	0.10	0.92	0.07	0.00	0.00	0.02	0.01	0.00	0.00	0.00	0.02	0.02		
	ASTER PRENANTHOIDES (ZIG ZAG ASTER)	FAC	Food	Butterflies	Flowers	Summer, fall	0.10	0.92	0.07	0.00	0.00	0.02	0.01	0.00	0.00	0.00	0.02	0.02		
	LILUM SUPERBUM (TURKSCAP Lily)	FACW+	Food	Butterflies, song birds	Flowers	Summer	0.10	0.92	0.07	0.00	0.00	0.02	0.01	0.00	0.00	0.00	0.02	0.02		
	SOLIDAGO JUNCEA (EARLY GOLDENROD)	UPL	Food	Pollinators, butterflies, beneficial insects	Seeds	Fall, winter	0.10	0.92	0.07	0.00	0.00	0.02	0.01	0.00	0.00	0.00	0.02	0.02		
12	EUPATORIUM FISTULOSUS (JOE PYE WEED)	FACW	Food	Pollinators, butterflies, beneficial insects	Flowers, seeds	Summer, fall	0.10	0.92	0.07	0.00	0.00	0.02	0.01	0.00	0.00	0.00	0.02	0.02		
	EUPATORIUM PERFOLIATUM (BONASET)	FACW+	Food	Pollinators, butterflies, beneficial insects	Flowers	Summer	0.10	0.92	0.07	0.00	0.00	0.02	0.01	0.00	0.00	0.00	0.02	0.02		
	EUTHAMIA GRAMINIFOLIA (GRASS LEAVED GOLDENROD)	FAC	Food	Butterflies	Flowers	Summer, fall	0.10	0.92	0.07	0.00	0.00	0.02	0.01	0.00	0.00	0.00	0.02	0.02		
	SOLIDAGO CANADENSIS (CANADIAN GOLDENROD)	FACU	Food	Butterflies, song birds, small mammals	Flowers	Summer, fall	0.10	0.92	0.07	0.00	0.00	0.02	0.01	0.00	0.00	0.00	0.02	0.02		
13	SOLIDAGO SPECIOSA (SHOWY GOLDENROD)	UPL	Food	Butterflies, song birds, small mammals	Flowers	Summer, fall	0.10	0.92	0.07	0.00	0.00	0.02	0.01	0.00	0.00	0.00	0.02	0.02		
	VERNONIA NOVEBORACENSIS (NEW YORK IRONWEED)	FACW+	Food	Butterflies	Flowers	Fall	0.10	0.92	0.07	0.00	0.00	0.02	0.01	0.00	0.00	0.00	0.02	0.02		
	ZIZA AUREA (GOLDEN ALEXANDERS)	FAC	Food	Beneficial insects	Flowers	Spring, summer	0.10	0.92	0.07	0.00	0.00	0.02	0.01	0.00	0.00	0.00	0.02	0.02		
	ASCLEPAS SYRACA (COMMON MILKWEED)	UPL	Food	Butterflies, beneficial insects	Flowers	Spring, summer	0.20	0.92	0.20	0.01	0.01	0.05	0.02	0.00	0.01	0.01	0.05	0.04		
14	BIDENS FRONDOSA (BIGGAR TICKS)	FACW	Food	Pollinators, butterflies, beneficial insects	Seeds	Summer, fall, winter	0.20	0.92	0.20	0.01	0.01	0.05	0.02	0.00	0.01	0.01	0.05	0.04		
	HELENIUM AUTUMNALE (COMMON SNEEZEWEED)	FACW+	Food	Butterflies	Flowers	Summer, fall	0.20	0.92	0.20	0.01	0.01	0.05	0.02	0.00	0.01	0.01	0.05	0.04		
	HELIANTHUS ANGUSTIFOLIUS (NARROW-LEAF SUNFLOWER)	FACW	Food	Butterflies, song birds	Flowers, seeds	Summer, fall	0.20	0.92	0.20	0.01	0.01	0.05	0.02	0.00	0.01	0.01	0.05	0.04		
	ONOCLEA SENSIBILIS (SENSITIVE FERN)	FACW	Food	Songbirds, small mammals	Ferns	Spring, summer, fall	0.20	0.92	0.20	0.01	0.01	0.05	0.02	0.00	0.01	0.01	0.05	0.04		
15	PENSTEMON DIGITALIS (PENSTEMON)	FAC	Food	Pollinators, butterflies, beneficial insects	Leaves, seeds	All	0.20	0.92	0.20	0.01	0.01	0.05	0.02	0.00	0.01	0.01	0.05	0.04		
	VERBENA HASTATA (BLUE VERVAIN)	FACW+	Food	Pollinators, butterflies, beneficial insects	Flowers, seeds	Spring, summer, fall	0.20	0.92	0.20	0.01	0.01	0.05	0.02	0.00	0.01	0.01	0.05	0.04		
	VERBESINA ALTERNIFOLIA (WINGSTEM)	FAC	Food	Butterflies, other insects	Flowers	Summer, fall	0.20	0.92	0.20	0.01	0.01	0.05	0.02	0.00	0.01	0.01	0.05	0.		





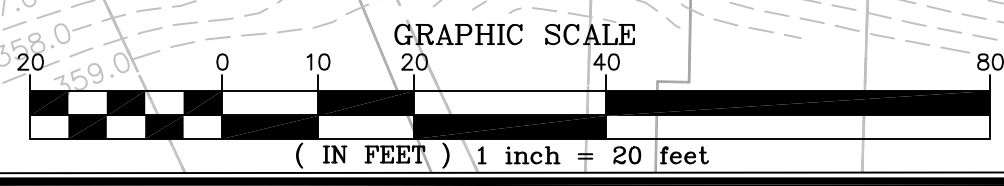
**TREE REMOVAL LEGEND**

- PROPERTY BOUNDARY
- - - COMBINED PROPERTY BOUNDARY, STREAM ESMT, AND TEMP. GRADING & CONST. / INGRESS-EGRESS ESMT
- - - COMBINED STREAM ESMT AND TEMP. GRADING & CONST. / INGRESS-EGRESS ESMT
- - - TEMP. GRADING & CONSTRUCTION ESMT, / INGRESS-EGRESS ESMT
- - - COUNTY MAPPED RPA
- - - EXISTING CONTOURS (0.5')
- - - NONPERENNIAL STREAM (EXISTING TOP OF BANK)
- - - PROPOSED CONTOURS (0.5')
- - - PROPOSED STREAM CENTERLINE
- - - PROPOSED TOP OF BANK
- - - LOC-TP LIMITS OF CLEARING / TREE PROTECTION
- - - TP TREE PROTECTION
- - - LOC LIMITS OF CLEARING
- - - X-CLF CHAINLINK FENCE
- - - 10-FOOT PEDESTRIAN GATE
- ⊗ TREE TO BE REMOVED

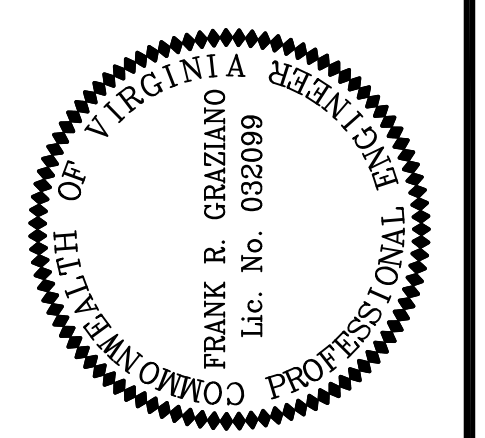


IT IS ASSUMED THAT ALL TREES WITHIN THE LIMITS OF CLEARING WILL NOT BE REMOVED. PRIOR TO CONSTRUCTION THE LIMITS OF CLEARING (LOC) SHALL BE WALKED BY WSSI STAFF TO CONFIRM TREE REMOVAL. IN THE EVENT THAT THE CONTRACTOR BELIEVES A TREE WITHIN THE LOC COULD BE SAVED, THE CONTRACTOR SHALL CONTACT WETLAND STUDIES AND SOLUTIONS, INC. AND HAVE THE PROJECT ENGINEER DETERMINE IF THE TREE SHOULD BE SAVED OR REMOVED.

NO TREE IMPACTS ARE ANTICIPATED IN THE ACCESS AND STAGING AREAS ON INLET CLUSTER PROPERTY.



**THIS SHEET TO BE USED FOR TREE REMOVAL PURPOSES ONLY.**



**REVISIONS**

No.	Date	Description	App. By

DATE: MARCH 2012 SCALE: 1" = 20'

Horizontal Datum: VCS NAD 83  
Vertical Datum: NGVD 29  
Boundary and Topo Source: WSSI and Fairfax Digital Data

Design	Draft	Approved
NAS	NAS	FRG

Sheet #  
21 of 49

Computer File Name:  
L:\2006\2010\02\CA02010\INLET-01.dwg  
TREE REMOVAL PLAN 01.dwg