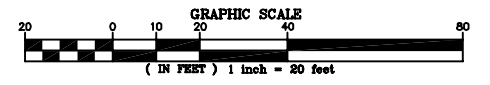


THIS SHEET IS TO BE USED FOR
PLANTING PLAN PURPOSES ONLY.



Wetland
Soil and Solutions, Inc.
5300 Wellington Branch Drive, Suite 100 • Gainesville, VA 20155
Phone 703 679 5600 • Fax 703 679 5601
wetlandinc.com

Northern Virginia Stream Restoration Bank
Hickory Cluster
Fairfax County, Virginia
Planting Plan



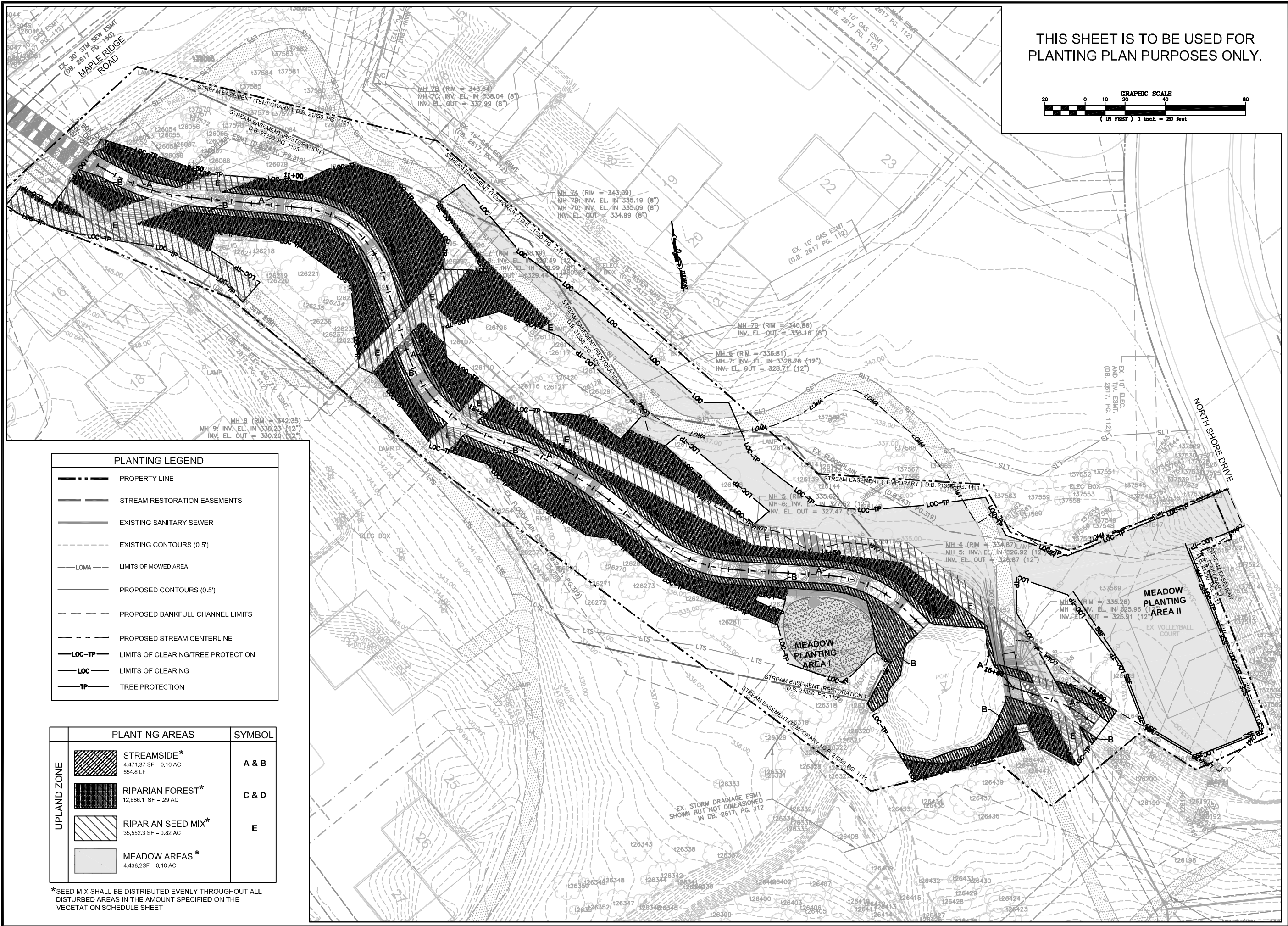
REVISIONS		
No.	Date	Description

Horizontal Datum: VCS NAD 83
Vertical Datum: NGVD 29
Boundary and Topo Source: WSSI and Fairfax Digital Data

Design	Draft	Approved
KLP	KLP	FRG

Sheet #
13 of 38

Computer File Name:
I:\2010\2011\201101\20110101\20110101.dwg



PLANTING LEGEND	
	PROPERTY LINE
	STREAM RESTORATION EASEMENTS
	EXISTING SANITARY SEWER
	EXISTING CONTOURS (0.5')
	LOMA - LIMITS OF MOWED AREA
	PROPOSED CONTOURS (0.5')
	PROPOSED BANKFULL CHANNEL LIMITS
	PROPOSED STREAM CENTERLINE
	LIMITS OF CLEARING/TREE PROTECTION
	LIMITS OF CLEARING
	TREE PROTECTION

UPLAND ZONE	PLANTING AREAS	SYMBOL
	STREAMSIDE* 4,471.37 SF = 0.10 AC 554.8 LF	A & B
	RIPARIAN FOREST* 12,696.1 SF = .29 AC	C & D
	RIPARIAN SEED MIX* 35,552.3 SF = 0.82 AC	E
	MEADOW AREAS* 4,438.2 SF = 0.10 AC	

*SEED MIX SHALL BE DISTRIBUTED EVENLY THROUGHOUT ALL DISTURBED AREAS IN THE AMOUNT SPECIFIED ON THE VEGETATION SCHEDULE SHEET