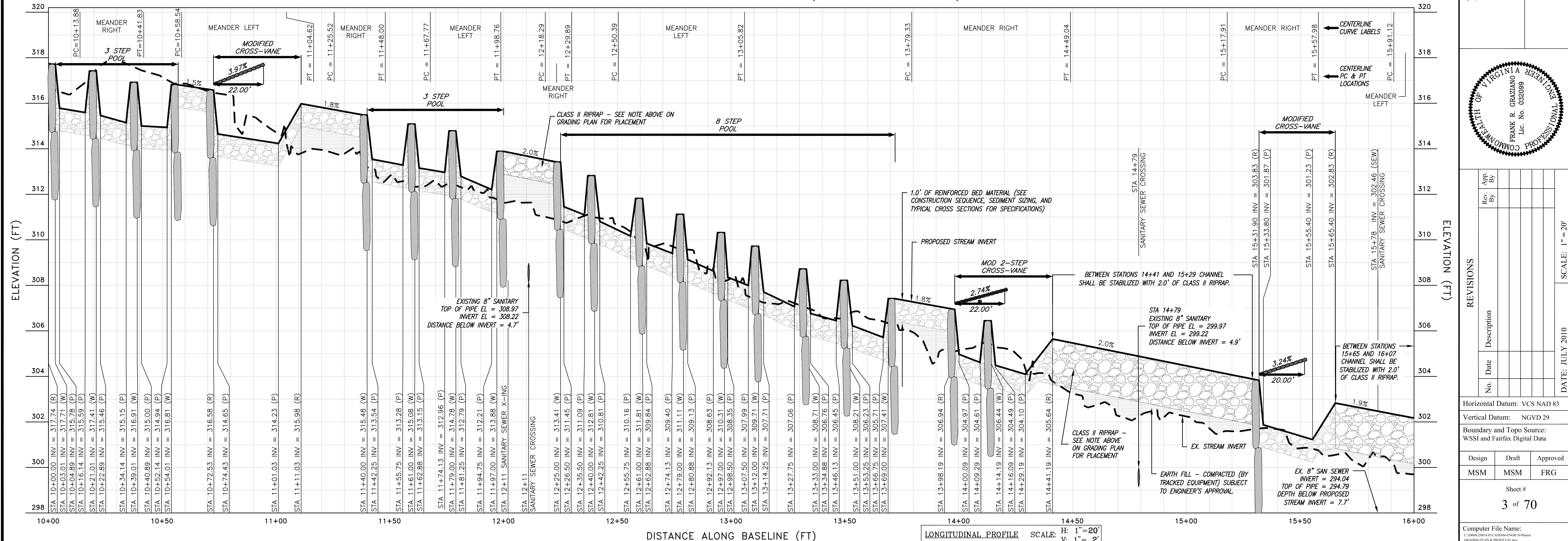


LONGITUDINAL PROFILE - FOREST EDGE SOUTH (STA 10+00 TO 16+00)



Grading Plan & Profile Sheet Index

N SHORE DRIVE
 SHEET 3
 SHEET 4
 SHEET 5
 SHEET 6
 SHEET 7
 SHEET 8

Wetland
 Studies and Solutions, Inc.
 5300 Wellington Branch Drive, Suite 100 • Gainesville, VA 20155
 Phone: 703.679.5600 • Fax: 703.679.5601
 wetlandstudios.com

Northern Virginia Stream Restoration Bank
Colvin Run - Forest Edge South
 Fairfax County, Virginia

Copyright © 2010 Wetland Studies and Solutions, Inc.

Professional Engineer
 FRANK R. GRAZIANO
 Lic. No. 032099
 STATE OF VIRGINIA

REVISIONS	No.	Date	Description

Horizontal Datum: VCS NAD 83
 Vertical Datum: NGVD 29
 Boundary and Topo Source: WSSI and Fairfax Digital Data

Design	Draft	Approved
MSM	MSM	FRG

Sheet #
 3 of 70

Computer File Name:
 L:\2006\2010\CA\03\CA03\1015\10\Profile GRADING PLAN & PROFILE 10.dwg