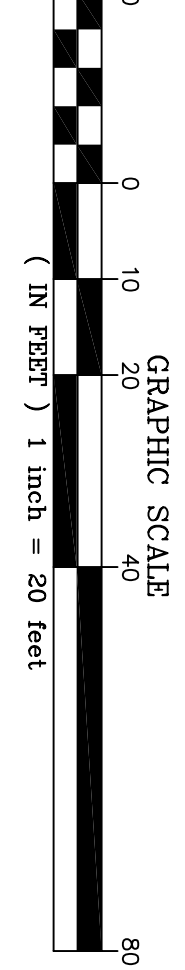
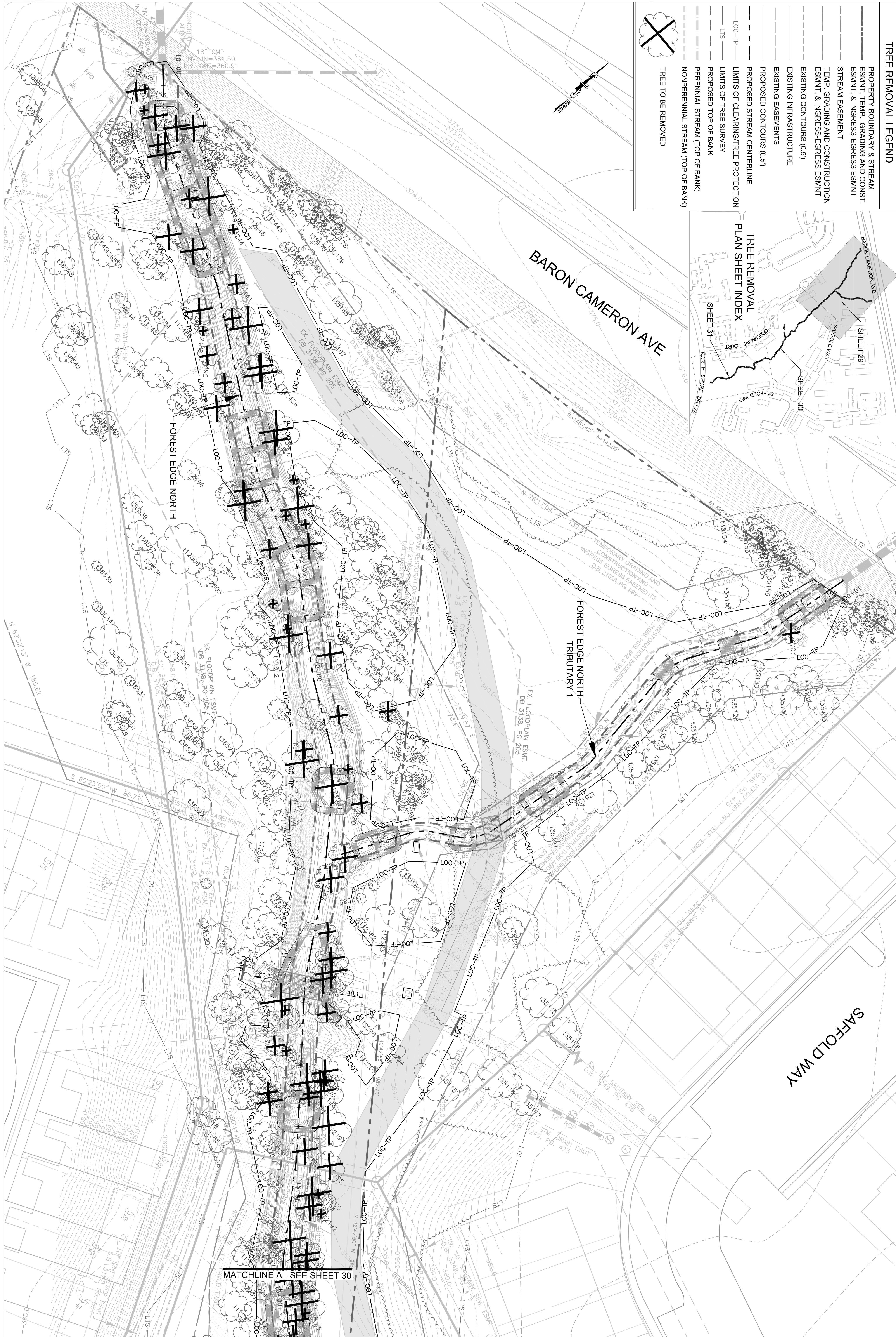
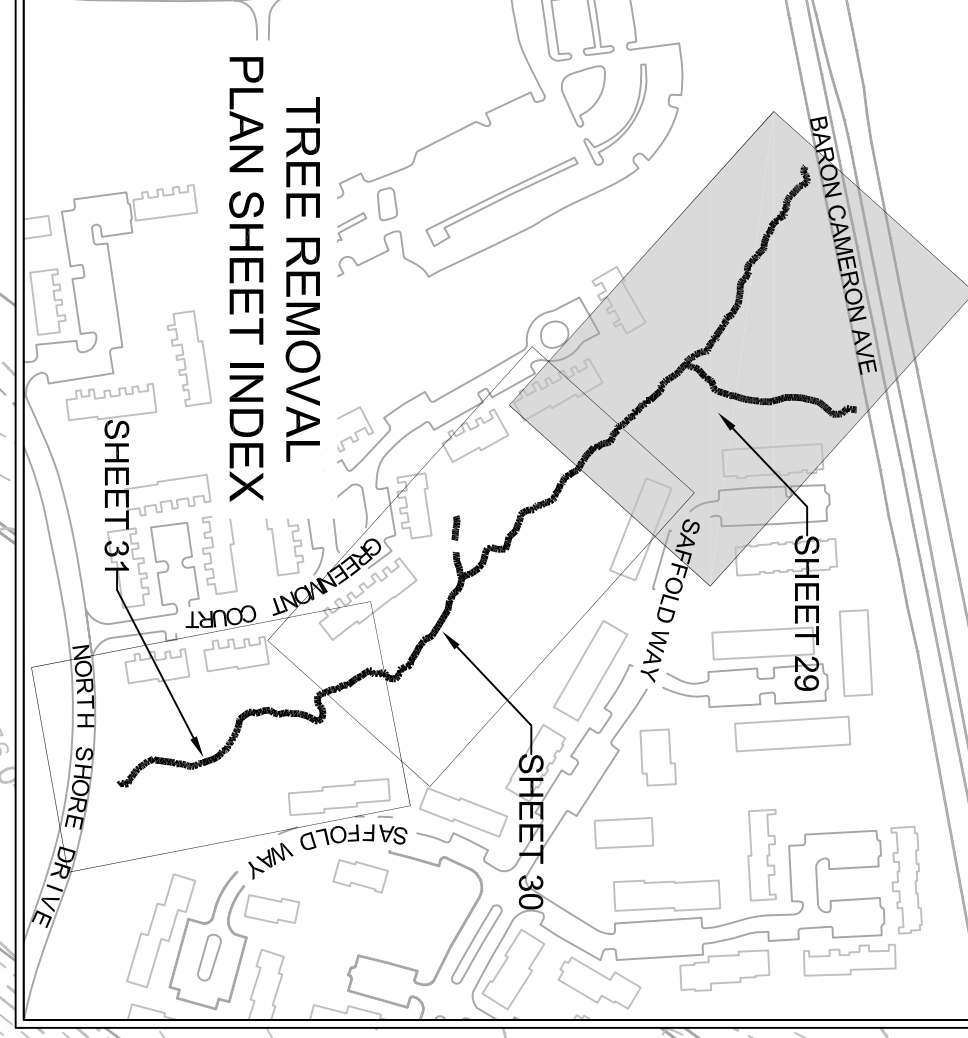


TREE REMOVAL LEGEND

- PROPERTY BOUNDARY & STREAM ESMNT, TEMP. GRADING AND CONST. ESMNT, & INGRESS-EGRESS ESMNT
- STREAM EASEMENT
- TEMP. GRADING AND CONSTRUCTION ESMNT, & INGRESS-EGRESS ESMNT
- EXISTING CONTOURS (0.5')
- EXISTING INFRASTRUCTURE
- EXISTING EASEMENTS
- PROPOSED CONTOURS (0.5')
- PROPOSED STREAM CENTERLINE
- LIMITS OF CLEARING/TREE PROTECTION
- LTS — LIMITS OF TREE SURVEY
- PROPOSED TOP OF BANK
- PERENNIAL STREAM (TOP OF BANK)
- NONPERENNIAL STREAM (TOP OF BANK)
- TREE TO BE REMOVED



IT IS ASSUMED THAT ALL TREES WITHIN THE LIMITS OF CLEARING WILL NOT BE REMOVED. PRIOR TO CONSTRUCTION THE LIMITS OF CLEARING (LOC) SHALL BE WALKED BY WSSJ STAFF TO CONFIRM TREE REMOVAL. IN THE EVENT THAT THE CONTRACTOR BELIEVES A TREE WITHIN THE LOC COULD BE SAVED, THE CONTRACTOR SHALL CONTACT WETLAND STUDIES AND SOLUTIONS, INC. AND HAVE THE PROJECT ENGINEER DETERMINE IF THE TREE SHOULD BE SAVED OR REMOVED.

THIS SHEET TO BE USED FOR TREE REMOVAL PURPOSES ONLY.

REVISIONS				
No.	Date	Description	Rev. By	App. By

DATE: JULY 2010 SCALE: 1" = 20'



Northern Virginia Stream Restoration Bank
 Colvin Run - Forest Edge North
 Fairfax County, Virginia
Tree Removal Plan

Copyright © 2010 Wetland Studies and Solutions, Inc.

5300 Wellington Branch Drive, Suite 100 • Gainesville, VA 20155
 Phone 703 679 5600 • Fax 703 679 5601
 wetlandstudies.com