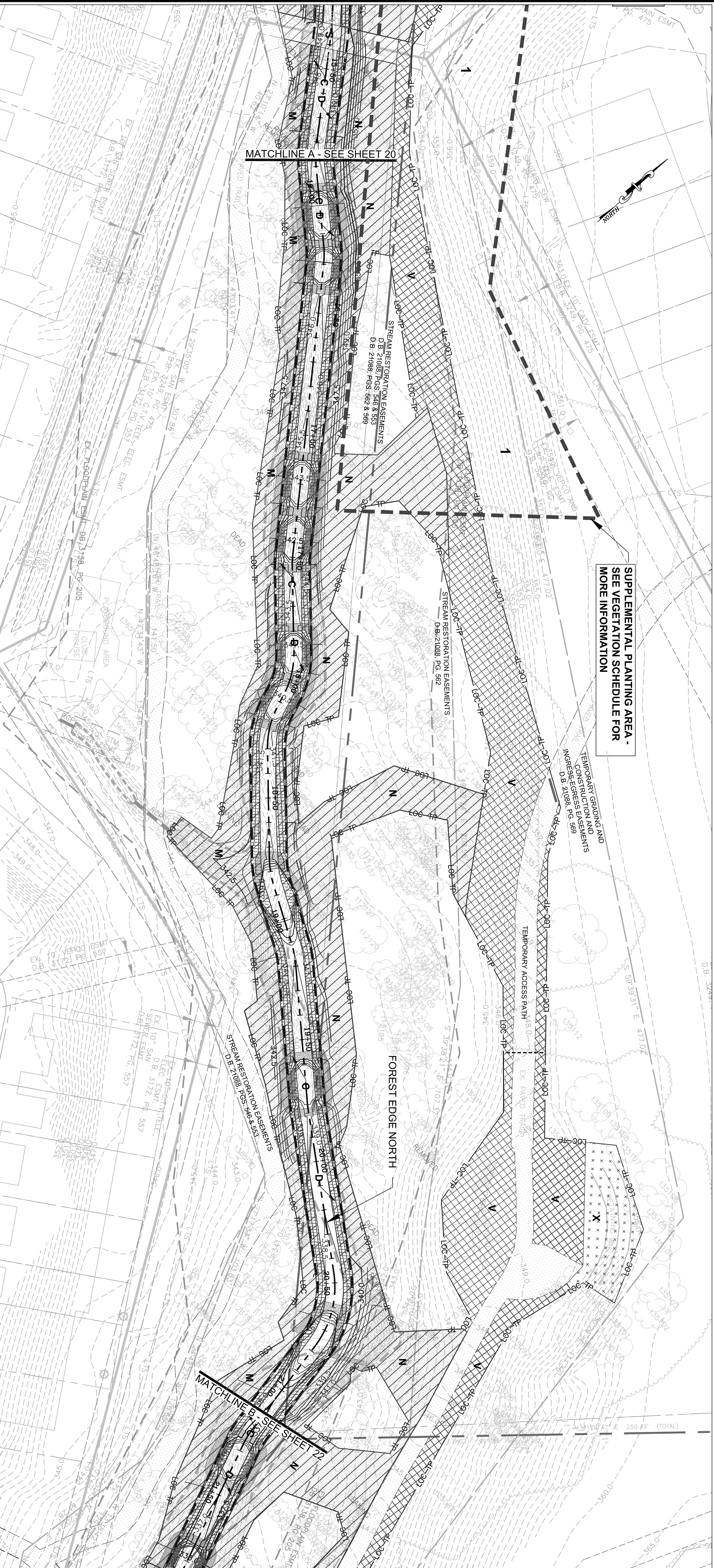


PLANTING LEGEND	
---	PROPERTY BOUNDARY & STREAM ESMNT.
---	TEMP. GRADING & CONST. ESMNT. & INGRESS ESMNT
---	STREAM EASEMENTS
---	TEMP. GRADING & CONSTRUCTION ESMNT. & INGRESS-EGRESS ESMNT
---	EXISTING SANITARY SEWER
---	EXISTING CONTOURS (0.5')
---	PROPOSED CONTOURS (0.5')
---	PROPOSED BANKFULL CHANNEL LIMITS
---	PROPOSED STREAM CENTERLINE
---	LIMITS OF CLEARING/TREE PROTECTION
---	LOC-TP

PLANTING AREAS		SYMBOL
	STREAMSIDE* 13,469 SF = 0.31 AC 3,491 LF	A, B, D, E, G, H
	RIPARIAN FOREST* 50,779 SF = 1.17 AC	J, K, L, M, N, O, P
	RIPARIAN SEED MIX* 5,194 SF = 0.12 AC	Q, R, S, T
	TURFGRASS SEED MIX 26,923 SF = 0.62 AC	U, V, W
	WILDFLOWER AREA 1,176 SF = 0.03 AC	X
	SUPPLEMENTAL PLANTING AREA 10,677 SF = 0.25 AC	1, 2

*SEED MIX SHALL BE DISTRIBUTED EVENLY THROUGHOUT ALL DISTURBED AREAS IN THE AMOUNT SPECIFIED ON THE VEGETATION SCHEDULE SHEET



SUPPLEMENTAL PLANTING AREA - SEE VEGETATION SCHEDULE FOR MORE INFORMATION

TEMPORARY GRADING AND CONSTRUCTION AND INGRESS-EGRESS EASEMENTS
DB: 21088, PG: 569

STREAM RESTORATION EASEMENTS
DB: 21088, PGS: 542 & 553

STREAM RESTORATION EASEMENTS
DB: 21088, PG: 562

FOREST EDGE NORTH

MATCHLINE A - SEE SHEET 20

MATCHLINE B - SEE SHEET 22

THIS SHEET TO BE USED FOR PLANTING PLAN PURPOSES ONLY.

REVISIONS		Rev. By	App. By
No.	Date	Description	

Horizontal Datum: VCS NAD 83
Vertical Datum: NGVD 29
Boundary and Topo Source: WSSI and Farfax Digital Data

Design	Drawn	Approved
NAS	NAS	FRG

DATE: JULY 2010 SCALE: 1" = 20'



Northern Virginia Stream Restoration Bank
Colvin Run - Forest Edge North
Fairfax County, Virginia

Planting Plan (cont'd)

Copyright © 2010 Wetland Studies and Solutions, Inc.

5300 Wellington Branch Drive, Suite 100 • Gainesville, VA 20155
Phone 703 679 5600 • Fax 703 679 5601
wetlandstudies.com