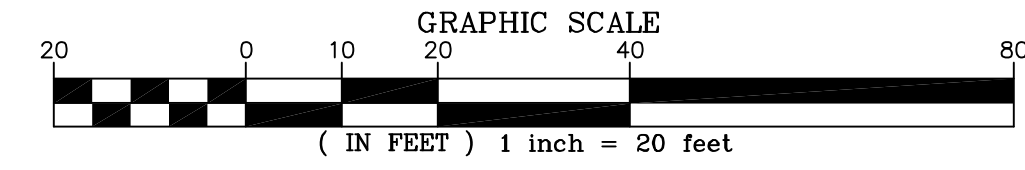
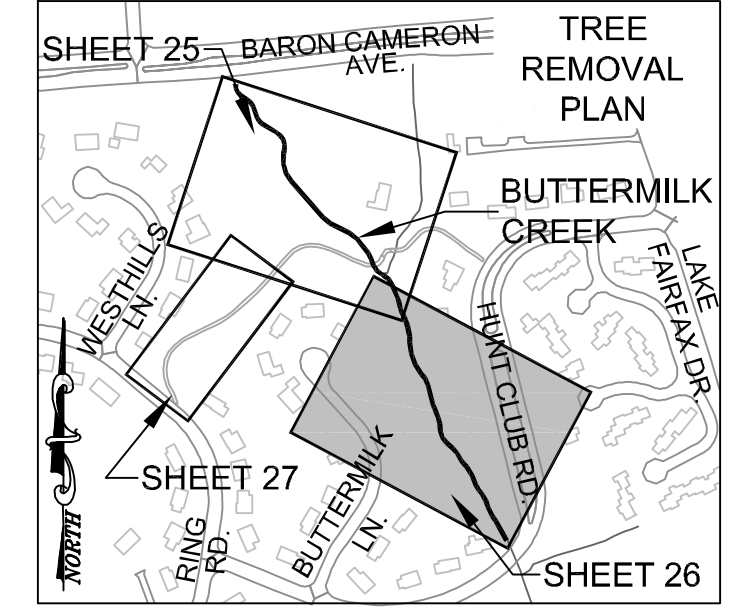


THIS SHEET TO BE USED FOR TREE REMOVAL PURPOSES ONLY.

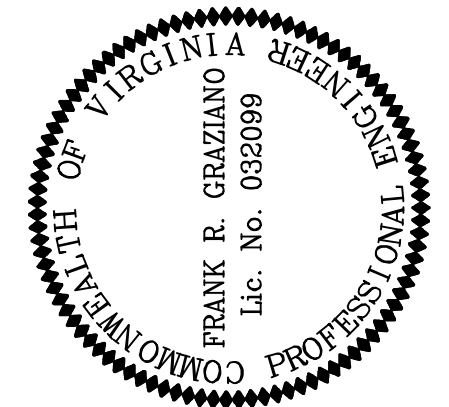
IT IS ASSUMED THAT ALL TREES WITHIN THE LIMITS OF CLEARING WILL NOT BE REMOVED. PRIOR TO CONSTRUCTION, THE LIMITS OF CLEARING (LOC) SHALL BE WALKED BY WETLAND STUDIES AND SOLUTIONS, INC. (WSSI) STAFF TO CONFIRM TREE REMOVAL. IN THE EVENT THAT THE CONTRACTOR BELIEVES A TREE WITHIN THE LOC COULD BE SAVED, THE CONTRACTOR SHALL CONTACT WSSI AND HAVE THE PROJECT ENGINEER DETERMINE IF THE TREE SHOULD BE SAVED OR REMOVED.



PRIOR TO CONSTRUCTION CONTRACTOR SHALL WORK WITH WSSI STAFF TO SEE IF IT IS POSSIBLE TO AVOID ANY ADDITIONAL TREES IN THIS CUT-IN.

	PROPERTY BOUNDARY
	COMBINED STREAM ESMNT AND TEMP. GRADING & CONST. / INGRESS-EGRESS ESMNT
	STREAM ESMNT
	TEMP. GRADING & CONSTRUCTION ESMNT. / INGRESS-EGRESS ESMNT
	EXISTING EASEMENTS
	EXISTING INFRASTRUCTURE
	EXISTING SANITARY SEWER
	EXISTING CONTOURS (0.5')
	PROPOSED CONTOURS
	PROPOSED STREAM CENTERLINE
	PROPOSED TOP OF BANK
	PROPOSED BANKFULL BENCH
	NONPERENNIAL STREAM (EXISTING TOP OF BANK)
	PERENNIAL STREAM (EXISTING TOP OF BANK)
	JURISDICTIONAL WETLANDS
	LIMITS OF TREE SURVEY
	LIMITS OF CLEARING/TREE PROTECTION
	CHAIN LINK FENCE
	TREE TO BE REMOVED

Northern Virginia Stream Restoration Bank
 Colvin Run - Buttermilk Creek
 Fairfax County, Virginia
 Tree Removal Plan (cont'd)

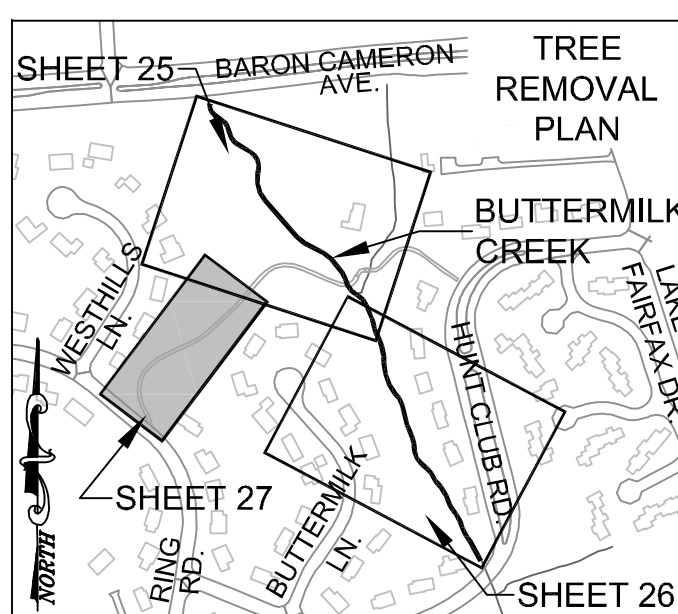


No.	Date	Description	App. By

Horizontal Datum:	VCS NAD 83	
Vertical Datum:	NGVD 29	
Boundary and Topo Source:	WSSI and Fairfax Digital Data	
Design	Draft	Approved
SRP	JTK	FRG
Sheet #	26 of 54	
Computer File Name:	1:20090201-01-C:\WORKSPACE\2009\08\08\TREE REMOVAL PLAN.dwg	

Wetland
 Studies and Solutions, Inc.
 5300 Wellington Branch Drive, Suite 100 • Gainesville, VA 20155
 Phone: 703 679 5600 • Fax: 703 679 5601
 wetlandstudies.com

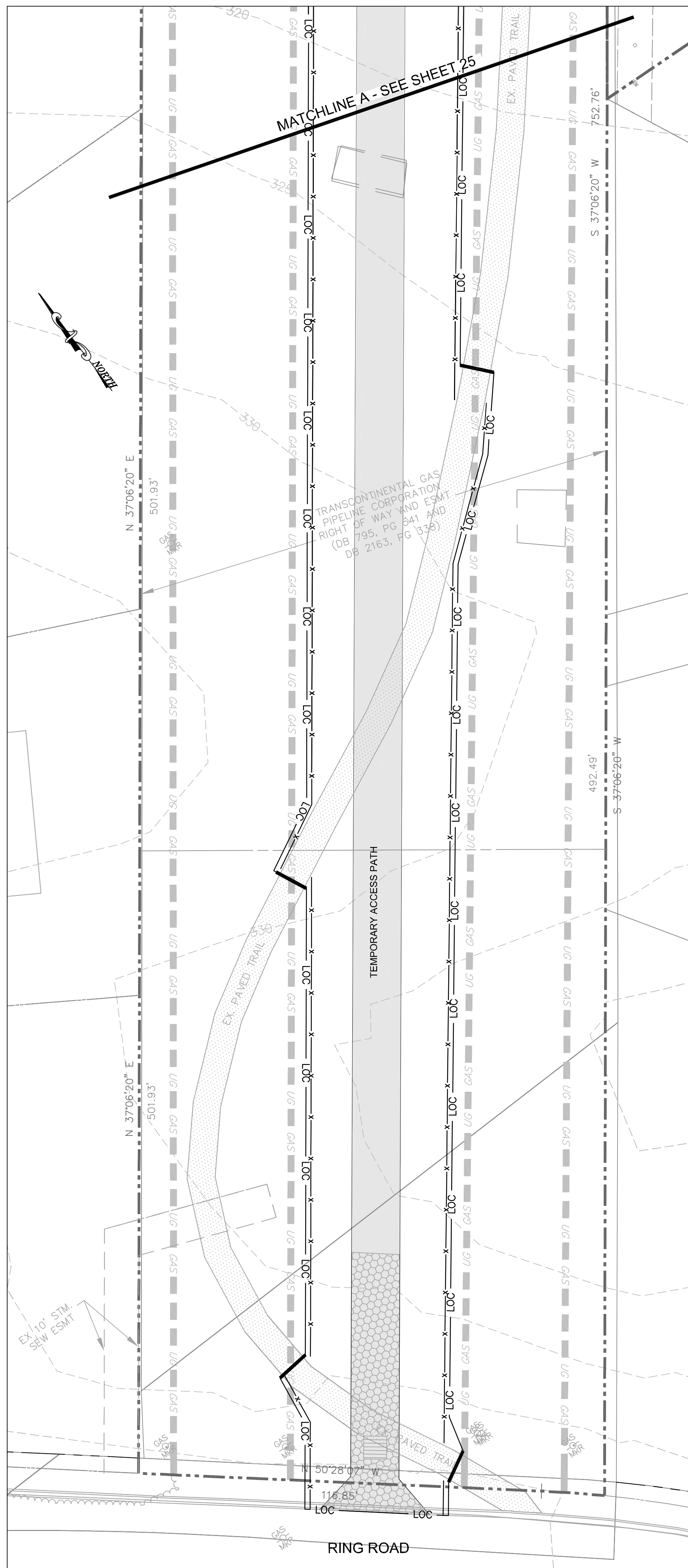
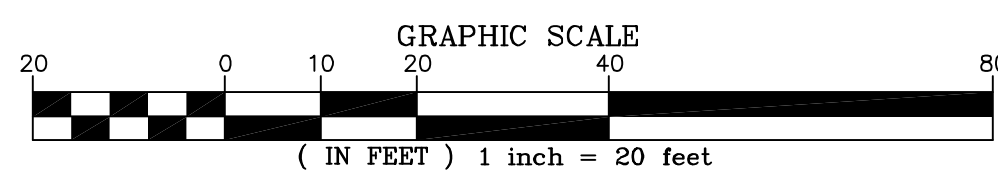
Copyright © 2012 Wetland Studies and Solutions, Inc.



THIS SHEET TO BE USED FOR TREE REMOVAL PURPOSES ONLY.

IT IS ASSUMED THAT ALL TREES WITHIN THE LIMITS OF CLEARING WILL NOT BE REMOVED. PRIOR TO CONSTRUCTION, THE LIMITS OF CLEARING (LOC) SHALL BE WALKED BY WETLAND STUDIES AND SOLUTIONS, INC. (WSSI) STAFF TO CONFIRM TREE REMOVAL. IN THE EVENT THAT THE CONTRACTOR BELIEVES A TREE WITHIN THE LOC COULD BE SAVED, THE CONTRACTOR SHALL CONTACT WSSI AND HAVE THE PROJECT ENGINEER DETERMINE IF THE TREE SHOULD BE SAVED OR REMOVED.

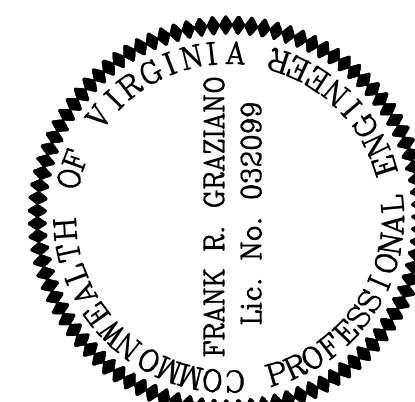
TREE REMOVAL LEGEND	
	PROPERTY BOUNDARY
	COMBINED STREAM ESMNT AND TEMP. GRADING & CONST. / INGRESS-EGRESS ESMNT
	STREAM ESMNT
	TEMP. GRADING & CONSTRUCTION ESMNT, / INGRESS-EGRESS ESMNT
	EXISTING EASEMENTS
	EXISTING INFRASTRUCTURE
	EXISTING SANITARY SEWER
	EXISTING CONTOURS (0.5')
	PROPOSED CONTOURS
	PROPOSED STREAM CENTERLINE
	PROPOSED TOP OF BANK
	PROPOSED BANKFULL BENCH
	NONPERENNIAL STREAM (EXISTING TOP OF BANK)
	PERENNIAL STREAM (EXISTING TOP OF BANK)
	JURISDICTIONAL WETLANDS
	LTS - LIMITS OF TREE SURVEY
	LOC-TP - LIMITS OF CLEARING/TREE PROTECTION
	CHAIN LINK FENCE
	TREE TO BE REMOVED



Northern Virginia Stream Restoration Bank
Colvin Run - Buttermilk Creek

Fairfax County, Virginia

Tree Removal Plan (cont'd)



REVISIONS		
No.	Date	Description

Horizontal Datum: VCS NAD 83
Vertical Datum: NGVD 29
Boundary and Topo Source: WSSI and Fairfax Digital Data

Design	Draft	Approved
SRP	JTK	FRG

Sheet #
27 of 54

Computer File Name:
1:20062012\01\01\CADD\ENR\01\01\Tree Removal Plan10.dwg