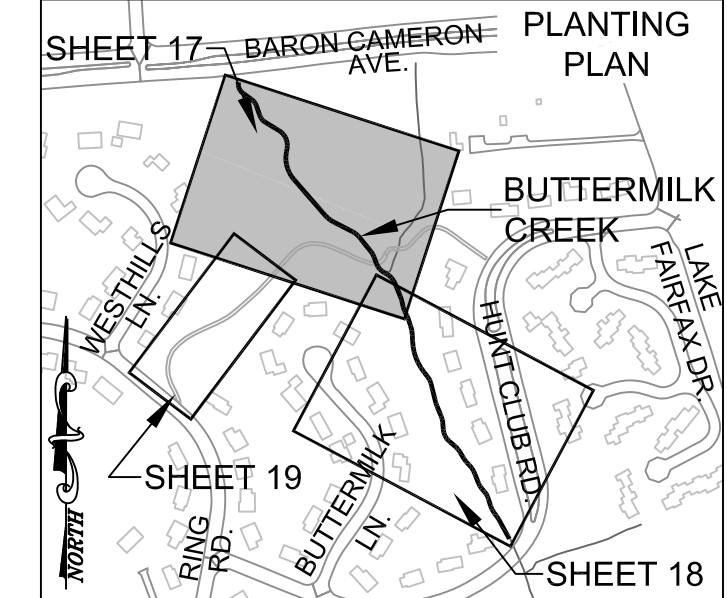
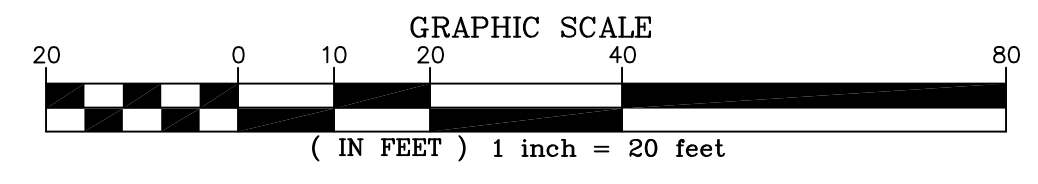


SEE THE PLANTING NOTES & DETAILS SHEETS FOR MORE INFORMATION.



PLANTING AREAS		SYMBOL
	STREAMSIDE* 8,466 SF = 0.19 AC 3,404 LF	A, B, C, D, E, F, G
	RIPARIAN FOREST* 46,308 SF = 1.06 AC	H, J, K, L, M, N, O
	RIPARIAN SEED MIX* 11,086 SF = 0.26 AC	P, Q, R, S
	AUGMENTED TREE* PLANTING 2,799 SF = 0.06 AC	T
	NATIVE EVERGREEN* SCREENING AREA 1,119 SF = 0.03 AC	U
	TURFGRASS SEED MIX 41,482 SF = 0.95 AC	V, W

*SEED MIX SHALL BE DISTRIBUTED EVENLY THROUGHOUT ALL DISTURBED AREAS IN THE AMOUNT SPECIFIED ON THE VEGETATION SCHEDULE SHEET.



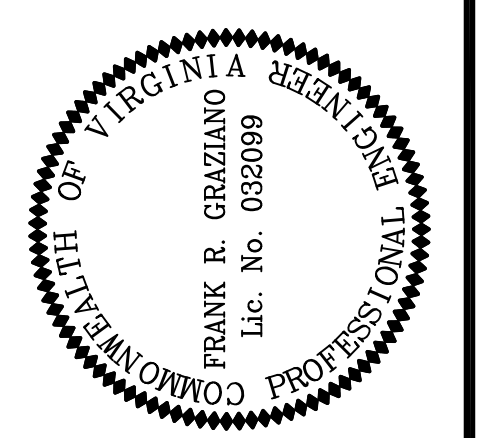
THIS SHEET TO BE USED FOR PLANTING PURPOSES ONLY.

PLANTING LEGEND	
	PROPERTY BOUNDARY
	COMBINED STREAM ESMT AND TEMP. GRADING & CONST. / INGRESS-EGRESS ESMT
	STREAM ESMT
	TEMP. GRADING & CONSTRUCTION ESMT, / INGRESS-EGRESS ESMT
	EXISTING SANITARY SEWER
	EXISTING CONTOURS (0.5')
	PROPOSED CONTOURS
	PROPOSED STREAM CENTERLINE
	PROPOSED TOP OF BANK
	LTS - LIMITS OF TREE SURVEY
	LOC-TP - LIMITS OF CLEARING/TREE PROTECTION

Northern Virginia Stream Restoration Bank
Colvin Run - Buttermilk Creek

Fairfax County, Virginia

Planting Plan



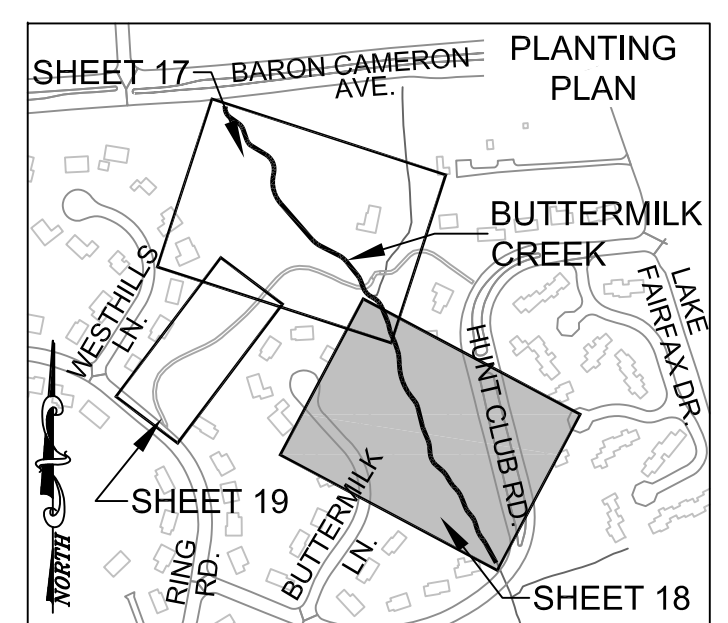
REVISIONS	
No.	Description

Horizontal Datum: VCS NAD 83		
Vertical Datum: NGVD 29		
Boundary and Topo Source: WSSI and Fairfax Digital Data		
Design	Draft	Approved
SRP	JTK	FRG
Sheet #		
17 of 54		
Computer File Name: I:\2006\2010\01\CA2010\ENGR10-000\PLANTING PLAN 01.dwg		

Copyright © 2012 Wetland Studies and Solutions, Inc.

Wetland
Studies and Solutions, Inc.
5300 Wellington Branch Drive, Suite 100 • Gainesville, VA 20155
Phone: 703 679 5600 • Fax: 703 679 5601
wetlandstudies.com

THIS SHEET TO BE USED FOR PLANTING PURPOSES ONLY.

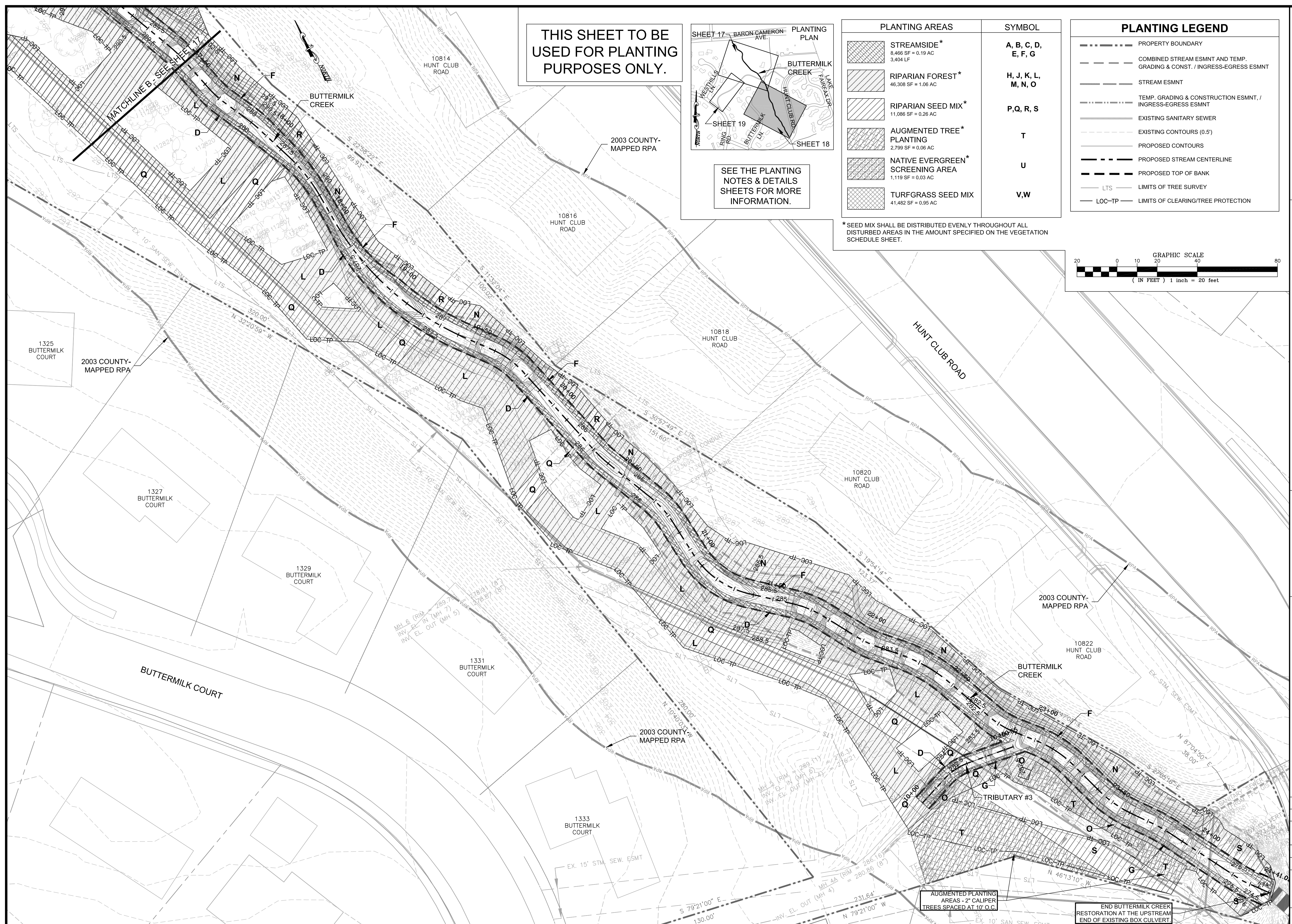
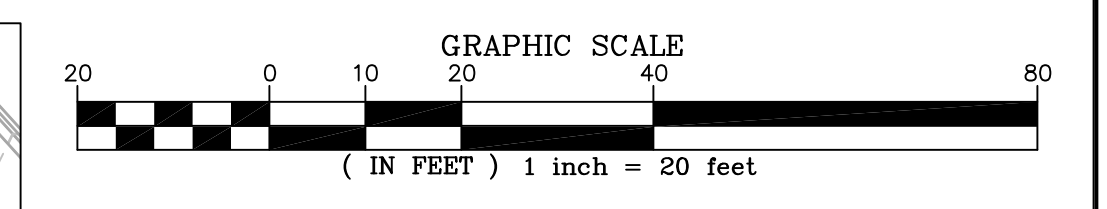


SEE THE PLANTING NOTES & DETAILS SHEETS FOR MORE INFORMATION.

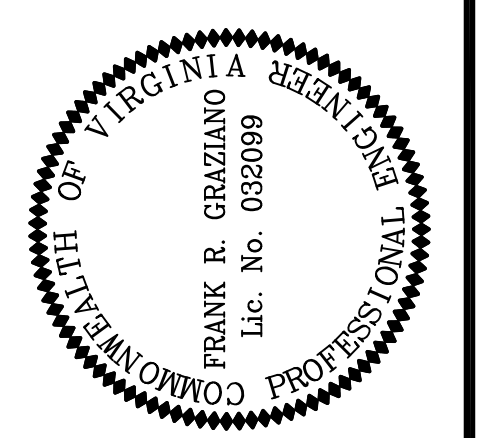
PLANTING AREAS	SYMBOL
STREAMSIDE* 8,466 SF = 0.19 AC 3,404 LF	A, B, C, D, E, F, G
RIPARIAN FOREST* 46,308 SF = 1.06 AC	H, J, K, L, M, N, O
RIPARIAN SEED MIX* 11,086 SF = 0.26 AC	P, Q, R, S
AUGMENTED TREE* PLANTING 2,799 SF = 0.06 AC	T
NATIVE EVERGREEN* SCREENING AREA 1,119 SF = 0.03 AC	U
TURFGRASS SEED MIX 41,482 SF = 0.95 AC	V, W

* SEED MIX SHALL BE DISTRIBUTED EVENLY THROUGHOUT ALL DISTURBED AREAS IN THE AMOUNT SPECIFIED ON THE VEGETATION SCHEDULE SHEET.

PLANTING LEGEND	
	PROPERTY BOUNDARY
	COMBINED STREAM ESMNT AND TEMP. GRADING & CONST. / INGRESS-EGRESS ESMNT
	STREAM ESMNT
	TEMP. GRADING & CONSTRUCTION ESMNT, / INGRESS-EGRESS ESMNT
	EXISTING SANITARY SEWER
	EXISTING CONTOURS (0.5')
	PROPOSED CONTOURS
	PROPOSED STREAM CENTERLINE
	PROPOSED TOP OF BANK
	LTS — LIMITS OF TREE SURVEY
	LOC-TP — LIMITS OF CLEARING/TREE PROTECTION



Northern Virginia Stream Restoration Bank
Colvin Run - Buttermilk Creek
Fairfax County, Virginia



REVISIONS	No.	Date	Description	App. By

DATE: SEPTEMBER 2012 SCALE: 1"=20'

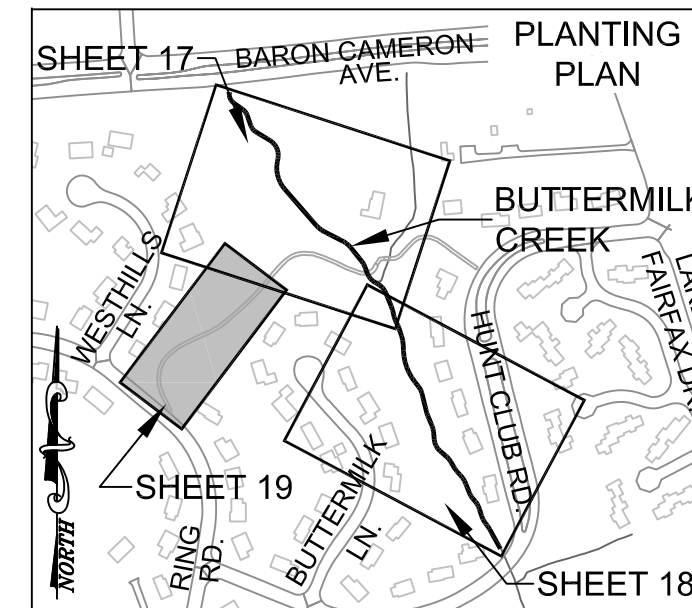
Horizontal Datum: VCS NAD 83
Vertical Datum: NGVD 29
Boundary and Topo Source: WSSI and Fairfax Digital Data

Design	Draft	Approved
SRP	JTK	FRG

Sheet #
18 of 54
Computer File Name: E:\309A\2010\03\AS010\AS10\AS10.dwg

SEE THE PLANTING NOTES & DETAILS SHEETS FOR MORE INFORMATION.

THIS SHEET TO BE USED FOR PLANTING PURPOSES ONLY.

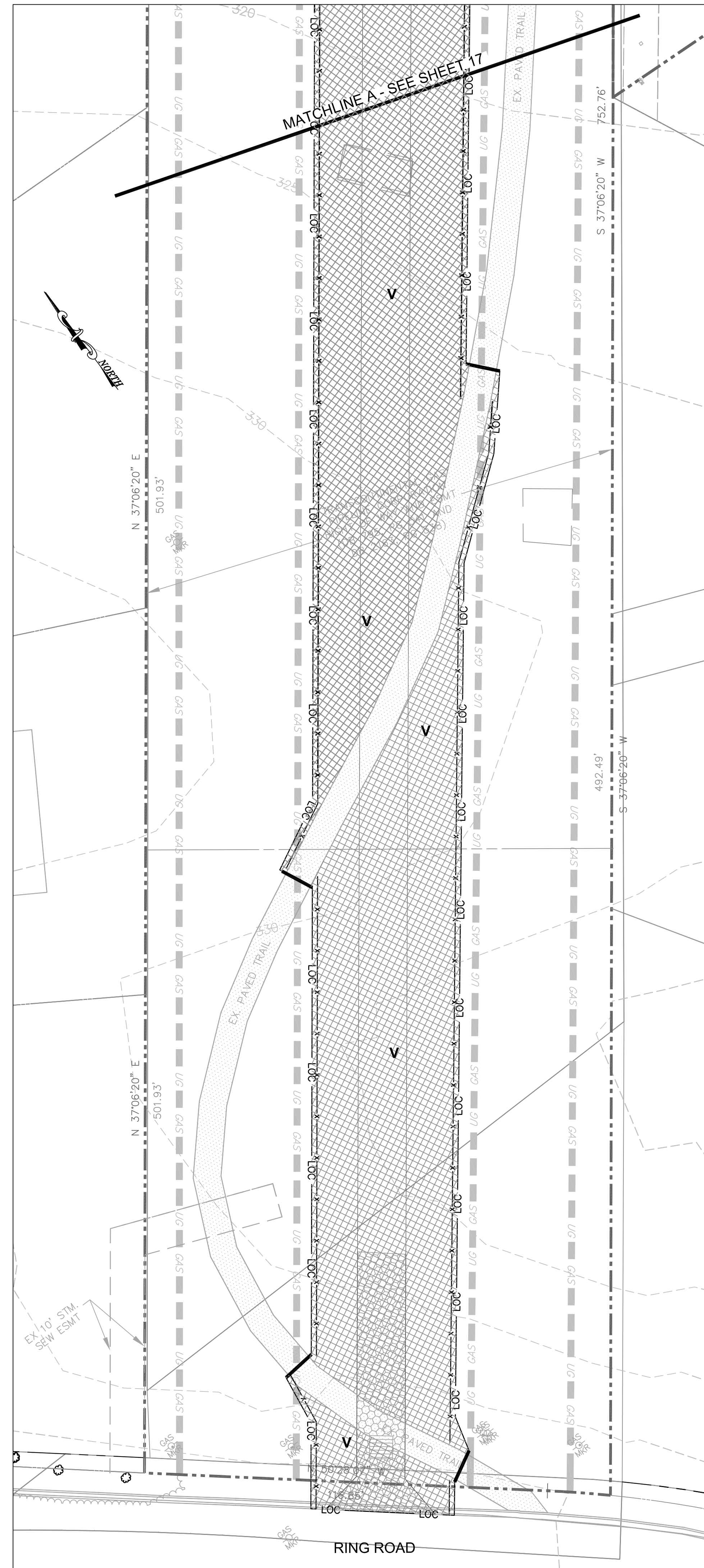
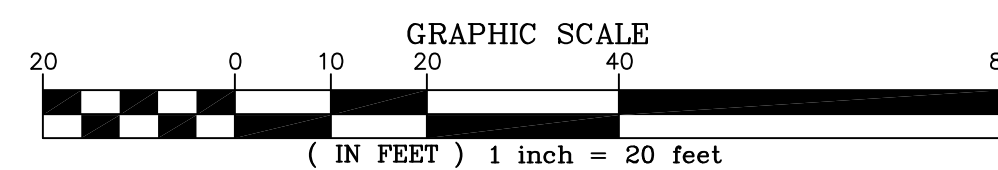


PLANTING LEGEND

- PROPERTY BOUNDARY
- - - COMBINED STREAM ESMNT AND TEMP. GRADING & CONST. / INGRESS-EGRESS ESMNT
- - - STREAM ESMNT
- - - TEMP. GRADING & CONSTRUCTION ESMNT, / INGRESS-EGRESS ESMNT
- - - EXISTING SANITARY SEWER
- - - EXISTING CONTOURS (0.5')
- - - PROPOSED CONTOURS
- - - PROPOSED STREAM CENTERLINE
- - - PROPOSED TOP OF BANK
- - - LTS - LIMITS OF TREE SURVEY
- - - LOC-TP - LIMITS OF CLEARING/TREE PROTECTION

PLANTING AREAS	SYMBOL
STREAMSIDE* 8,466 SF = 0.19 AC 3,404 LF	A, B, C, D, E, F, G
RIPARIAN FOREST* 46,308 SF = 1.06 AC	H, J, K, L, M, N, O
RIPARIAN SEED MIX* 11,086 SF = 0.26 AC	P, Q, R, S
AUGMENTED TREE* PLANTING 2,799 SF = 0.06 AC	T
NATIVE EVERGREEN* SCREENING AREA 1,119 SF = 0.03 AC	U
TURFGRASS SEED MIX	V, W

* SEED MIX SHALL BE DISTRIBUTED EVENLY THROUGHOUT ALL DISTURBED AREAS IN THE AMOUNT SPECIFIED ON THE VEGETATION SCHEDULE SHEET.



Northern Virginia Stream Restoration Bank
Colvin Run - Buttermilk Creek

Fairfax County, Virginia

Planting Plan (cont'd)



REVISIONS		App. By	Rev. By
No.	Date	Description	

Horizontal Datum: VCS NAD 83
Vertical Datum: NGVD 29
Boundary and Topo Source: WSSI and Fairfax Digital Data

Design	Draft	Approved
SRP	JTK	FRG

Sheet #
19 of 54

Computer File Name:
1:2009\2010\01\CAD\09\ENGR\10\Sheet
PLANTING PLAN 09.dwg