



Northern Virginia Stream Restoration Bank Reston Status

February 19, 2013

Presented by Scott Petrey

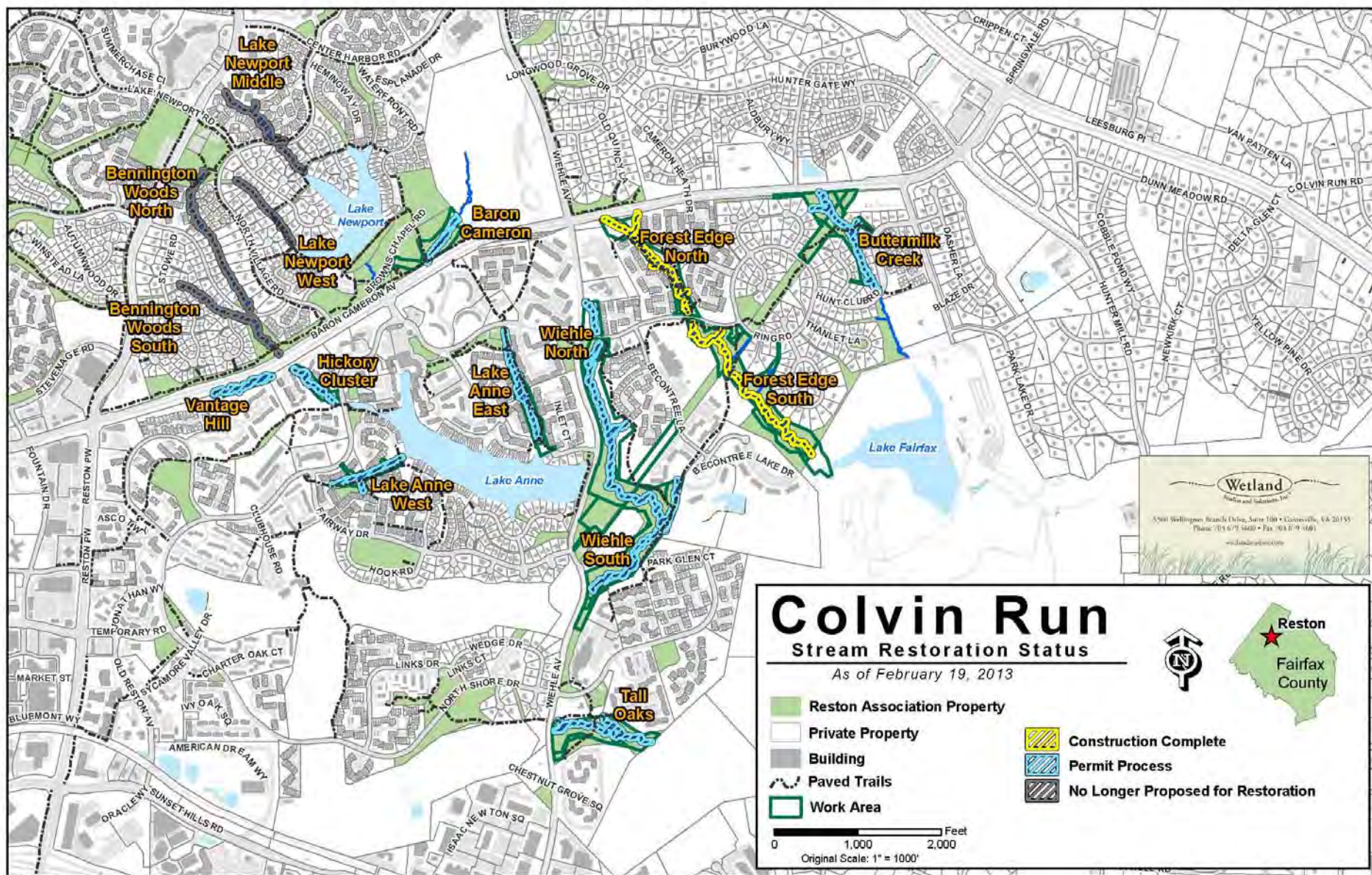
Wetland Studies and Solutions, Inc.

5300 Wellington Branch Drive · Suite 100 · Gainesville · Virginia 20155

www.wetlandstudies.com



Reston Status



\\00009200110625\RestorationProgress\REDC\Ovin_RestorationProgress_20130219.mxd

KIDS' TROUT FISHING DAY

Let's Go Fishing!

AGES: 2-12

DATE: March 23, 2013

TIME: 8 a.m. to Noon

LOCATION: Snakeden Branch Stream
between Soapstone Drive and Lake Audubon,
park along Soapstone Drive, Glade Drive, and
at the Glade Pool parking lot.

FREE EVENT

Snakeden Branch will be stocked with hundreds of trout. All necessary equipment will be provided to make your day a success. Plus, volunteers will be on hand to help clean the fish you catch. **Please call or e-mail to reserve a rod for your child.**

ALL KIDS MUST BE ACCOMPANIED BY AN ADULT.

Teens and adults, ages 16 & up, who are helping must have a Virginia state fishing license, available online at www.dgif.state.va.us.

ADULTS ARE NOT PERMITTED TO FISH DURING KIDS' FISHING TIME.

Reston's Kids' Trout Fishing Day is made possible by a partnership with Reston Association, Northern Virginia Trout Unlimited, Virginia Department of Game and Inland Fisheries and Wetland Studies and Solutions, Inc.

**VOLUNTEERS ARE NEEDED TO HELP
KIDS LEARN HOW TO FISH AND TO HELP
CLEAN THE CATCH.**

To reserve a fishing rod for your child or to volunteer, contact Ha Brock at 703-435-7986 or e-mail habrock@reston.org.
Registration ends March 18.



Let's Go Fishing 2013



3rd Annual

Kids' Trout Fishing Day

Saturday
March 23, 2013
8 am - noon



Northern Virginia Stream Restoration Bank Buttermilk Creek Final Plan

February 19, 2013

Presented by Scott Petrey

Wetland Studies and Solutions, Inc.

5300 Wellington Branch Drive · Suite 100 · Gainesville · Virginia 20155

www.wetlandstudies.com



Buttermilk Creek – Final Plan

Changes from Preliminary Plan:

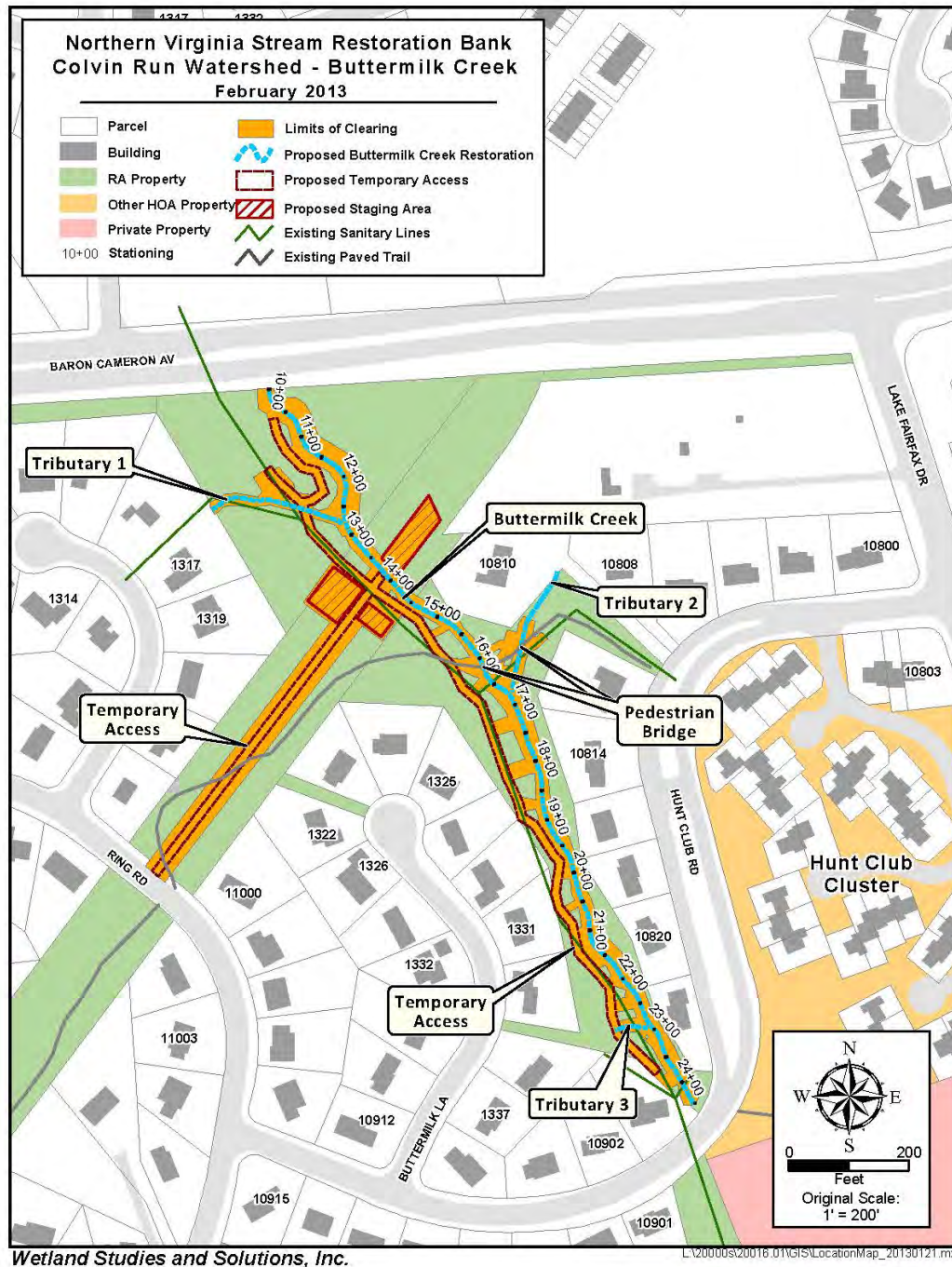
- Removed 2 Step Pools (Sta 19+32 & 24+12)
- Added 5 trees to be removed (12734 – 12" Red Maple, 12736 – 8" Black Willow, 12737 – 5" Black Willow, 13772 – 13" American Sycamore, 13829 – 6" Red Maple)

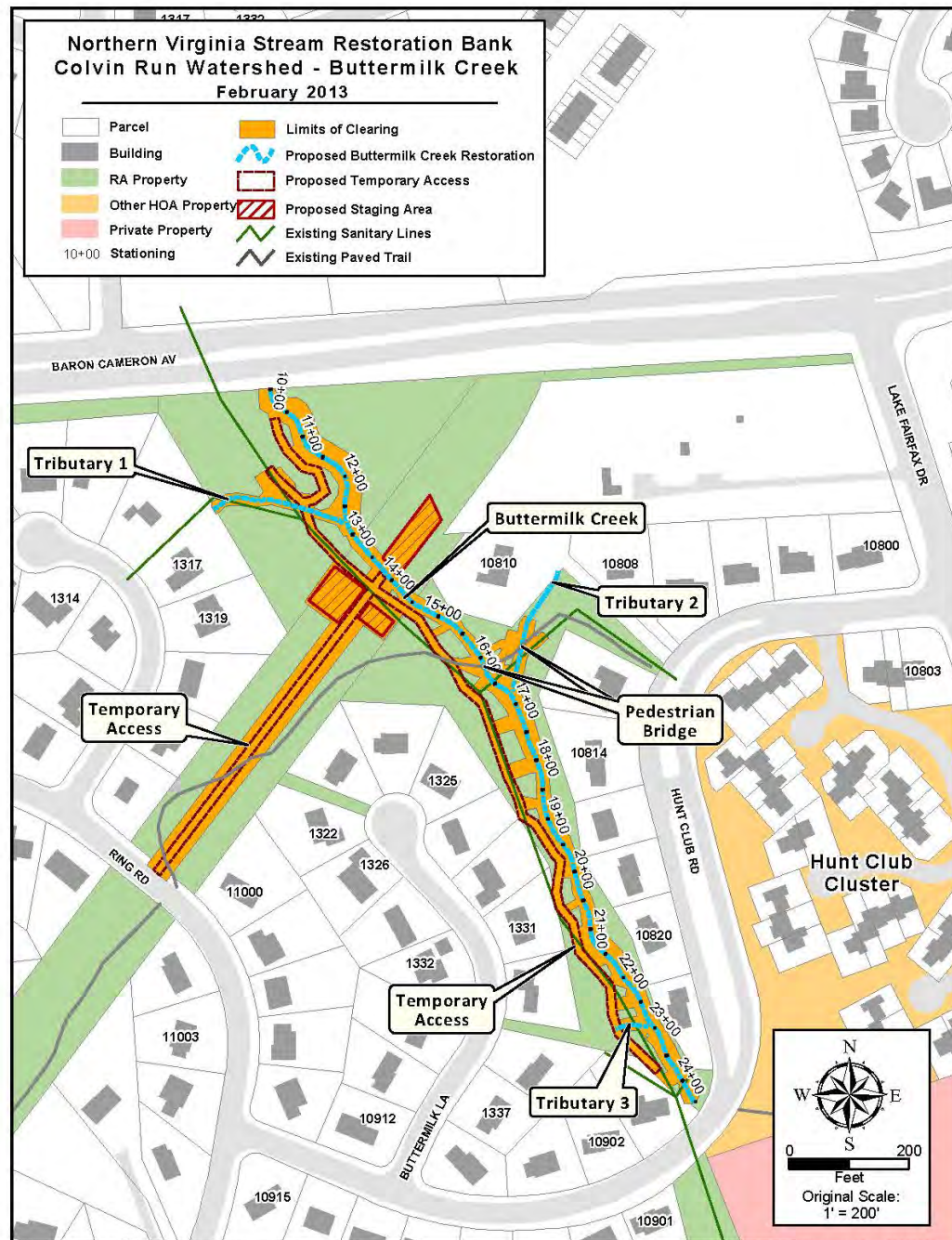
Buttermilk Creek Community Events:

- Community Presentation Final Plan and Stream Walk – November 10, 2012
- Preliminary Plan - DRB Approved March 20, 2012
- Community Presentation Preliminary Plan February 11, 2012

Proposed Construction Access & Staging:

- Access directly from Ring Road and follows gas line easement
- Staging Area - small area over channel at upstream end of restoration





Wetland Studies and Solutions, Inc.

L:\20000s\20016 01\GIS\LocationMap_20130121.mxd

Buttermilk Creek – Final Plan

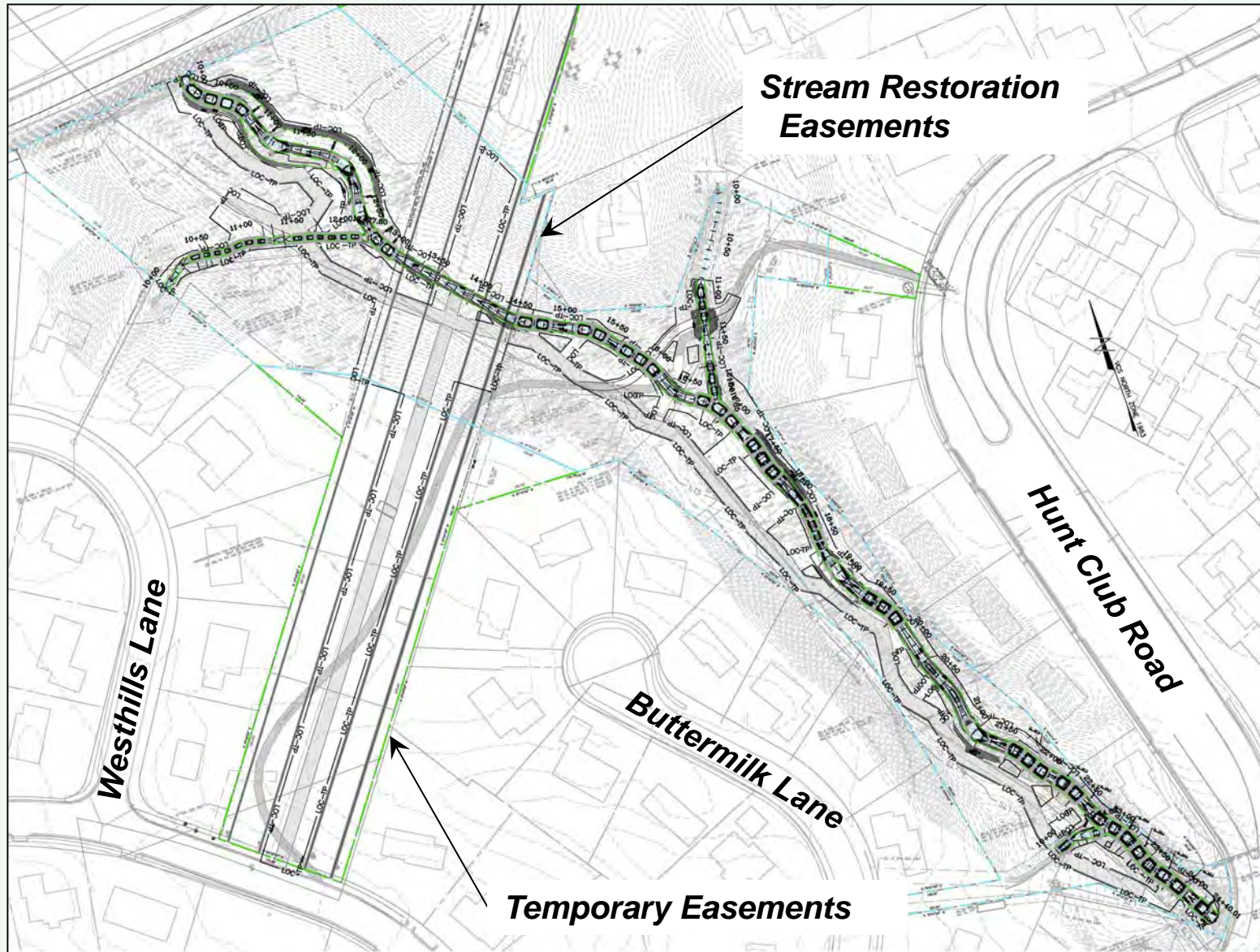
Channel Dimensions:

	BC 1	BC 2	T1	T2	T3
BKF Width	12.0'	14.0'	6.0'	8.5'	8.5'
BKF Depth	1.3'	1.4'	0.5'	0.7'	0.7'

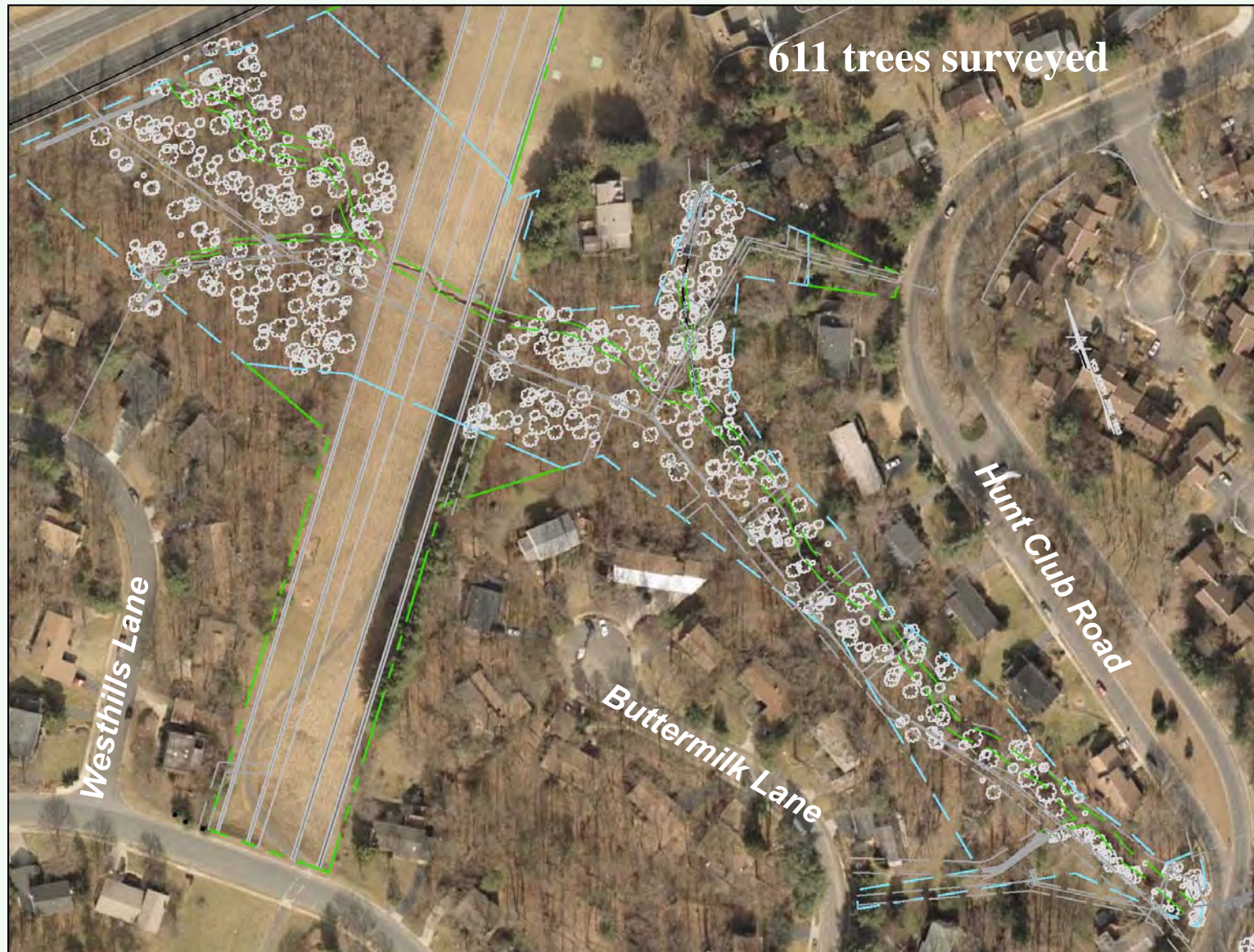
Restoration Lengths:

- Buttermilk Length = 1,441'
- Trib 1 = 228'
- Trib 2 = 125'
- Trib 3 = 54'
- Total = 1,848'

Buttermilk Creek–Easements



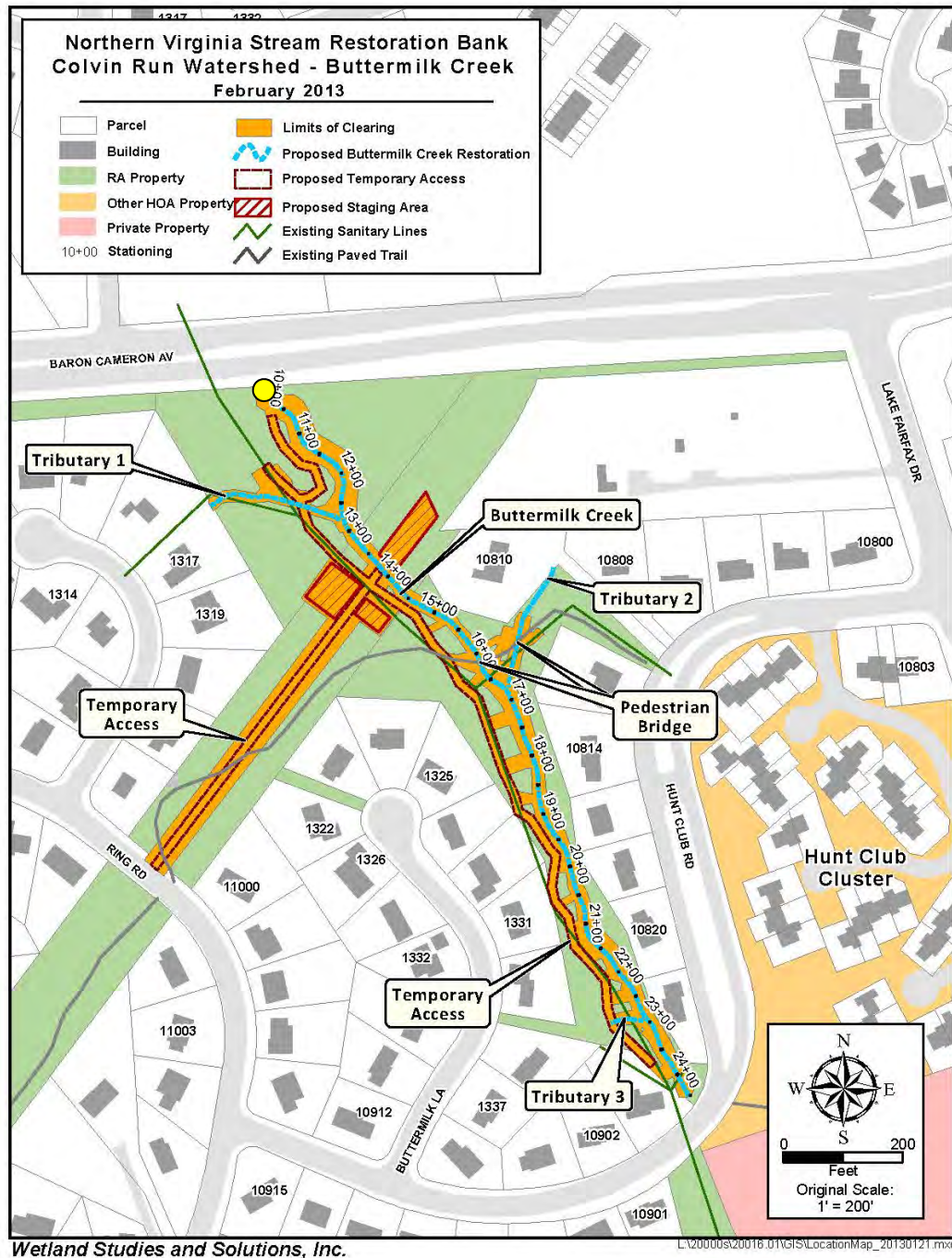
Buttermilk Creek – Tree Survey



Buttermilk Creek Existing Conditions



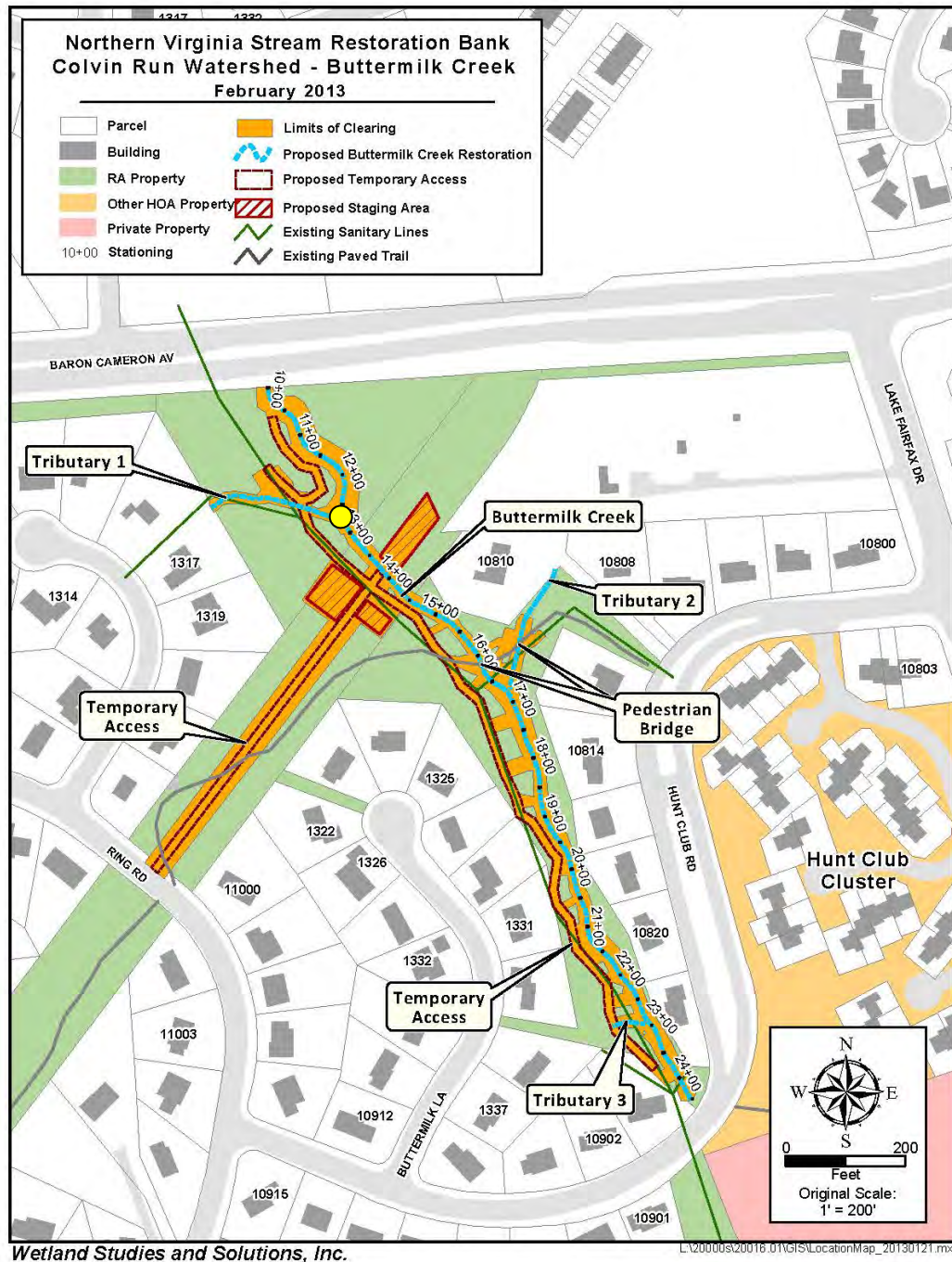
- Culvert at under Baron Cameron
- Eroded banks, failed restoration



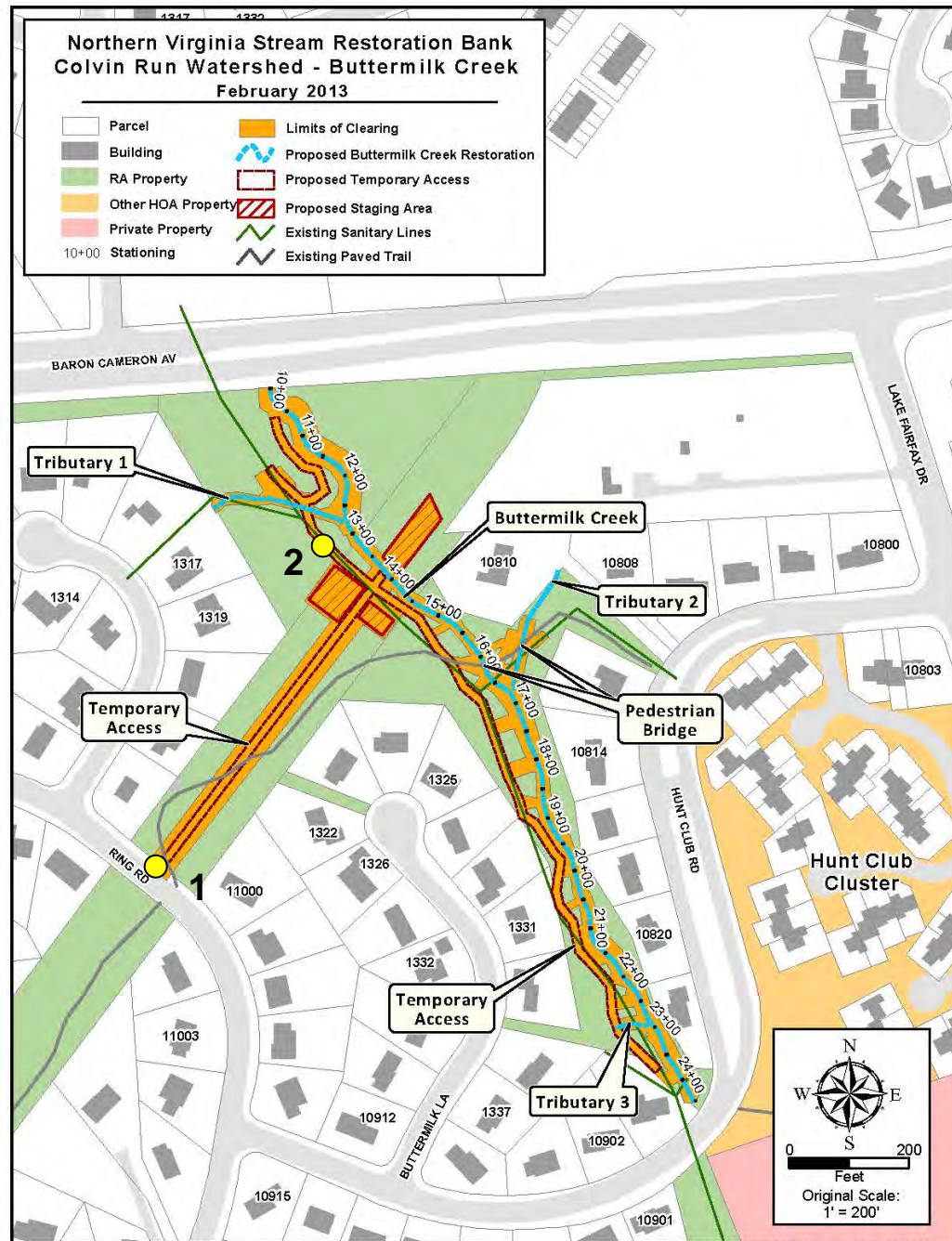
Buttermilk Creek Existing Conditions



- Tributary 1 confluence
- Eroded banks



Buttermilk Creek Existing Conditions

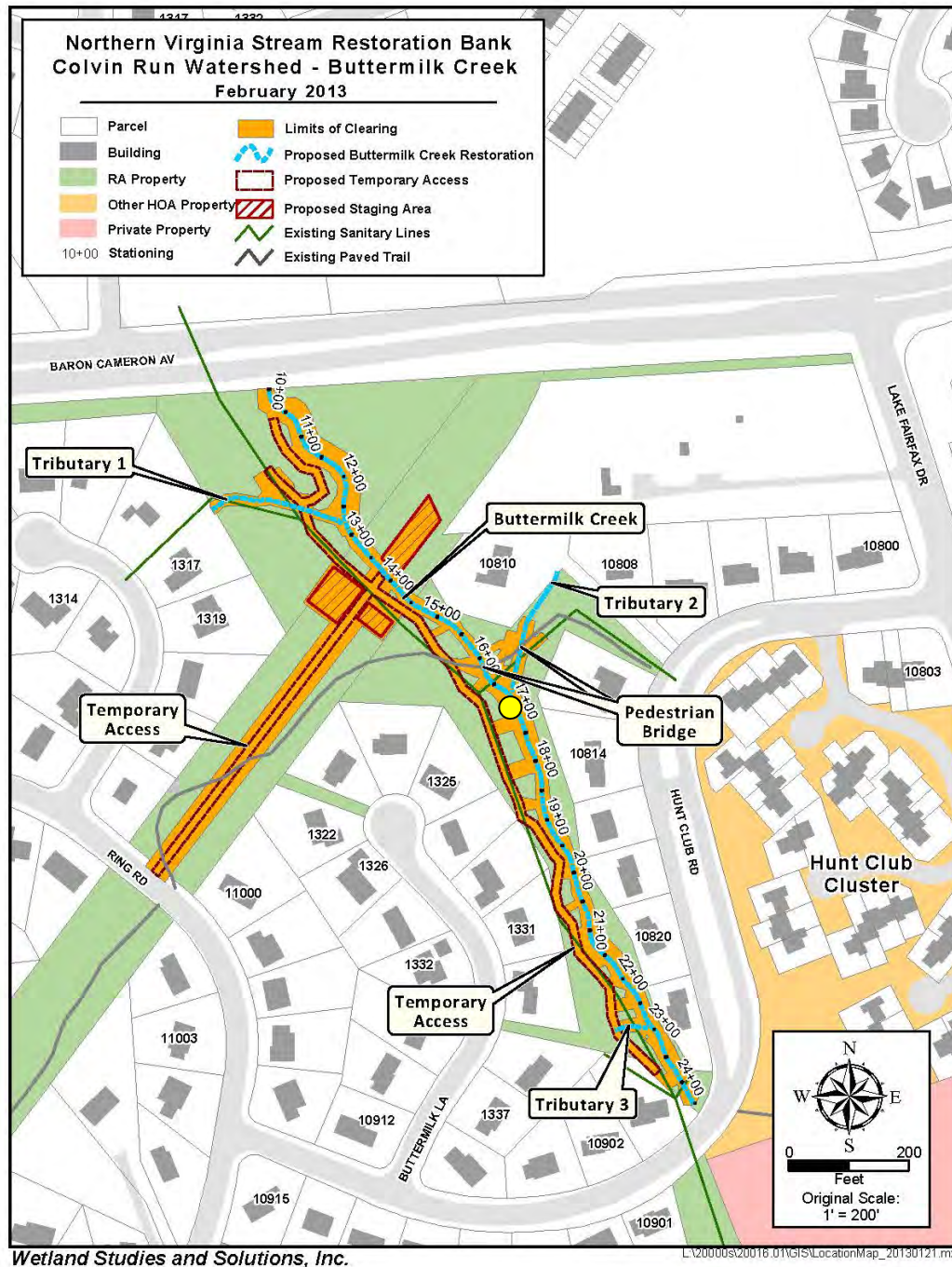


- Stream in gas easement
- Access along sanitary easement

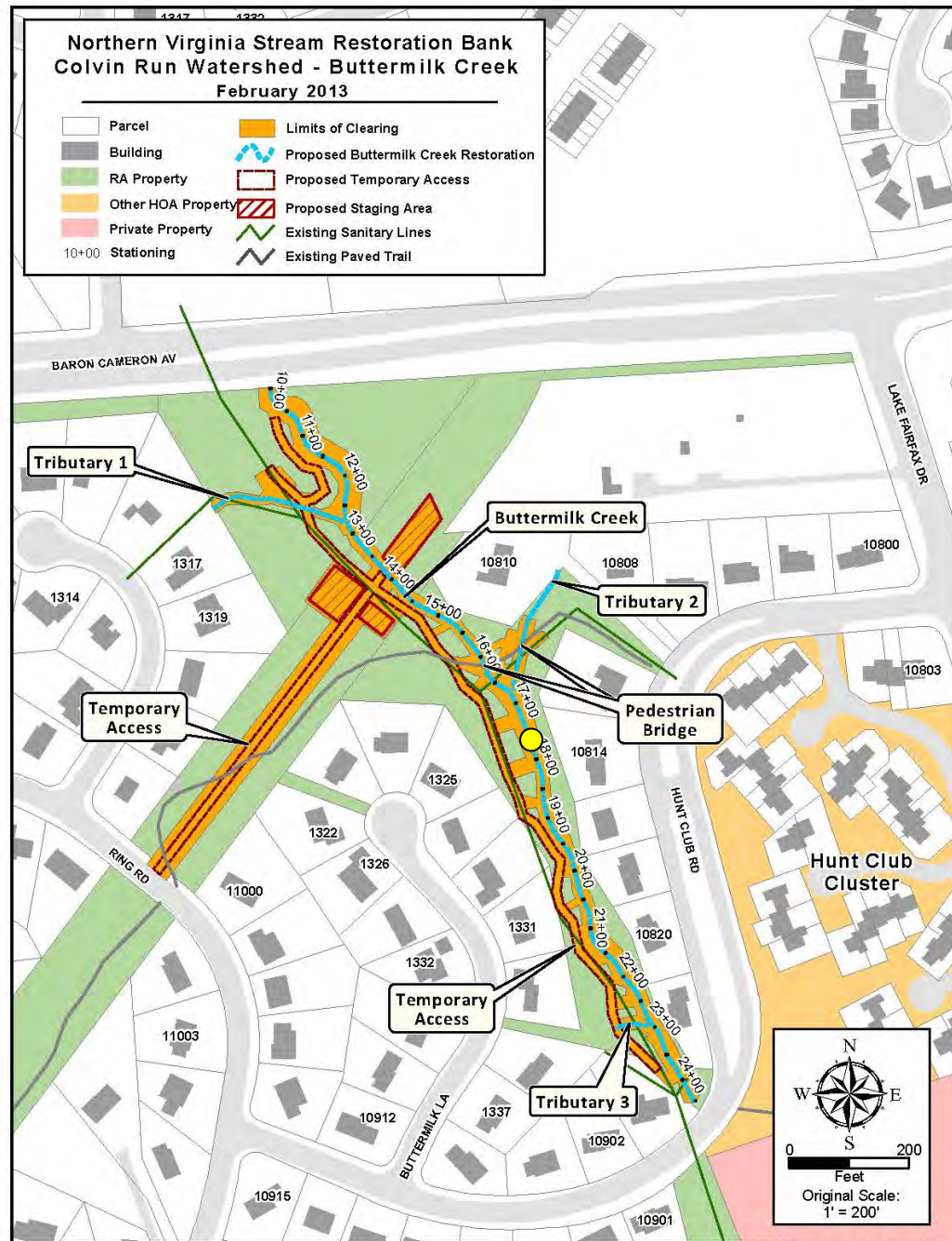
Buttermilk Creek Existing Conditions



- Undercut bridge abutments
- Invasive bamboo, eroded banks



Buttermilk Creek Existing Conditions

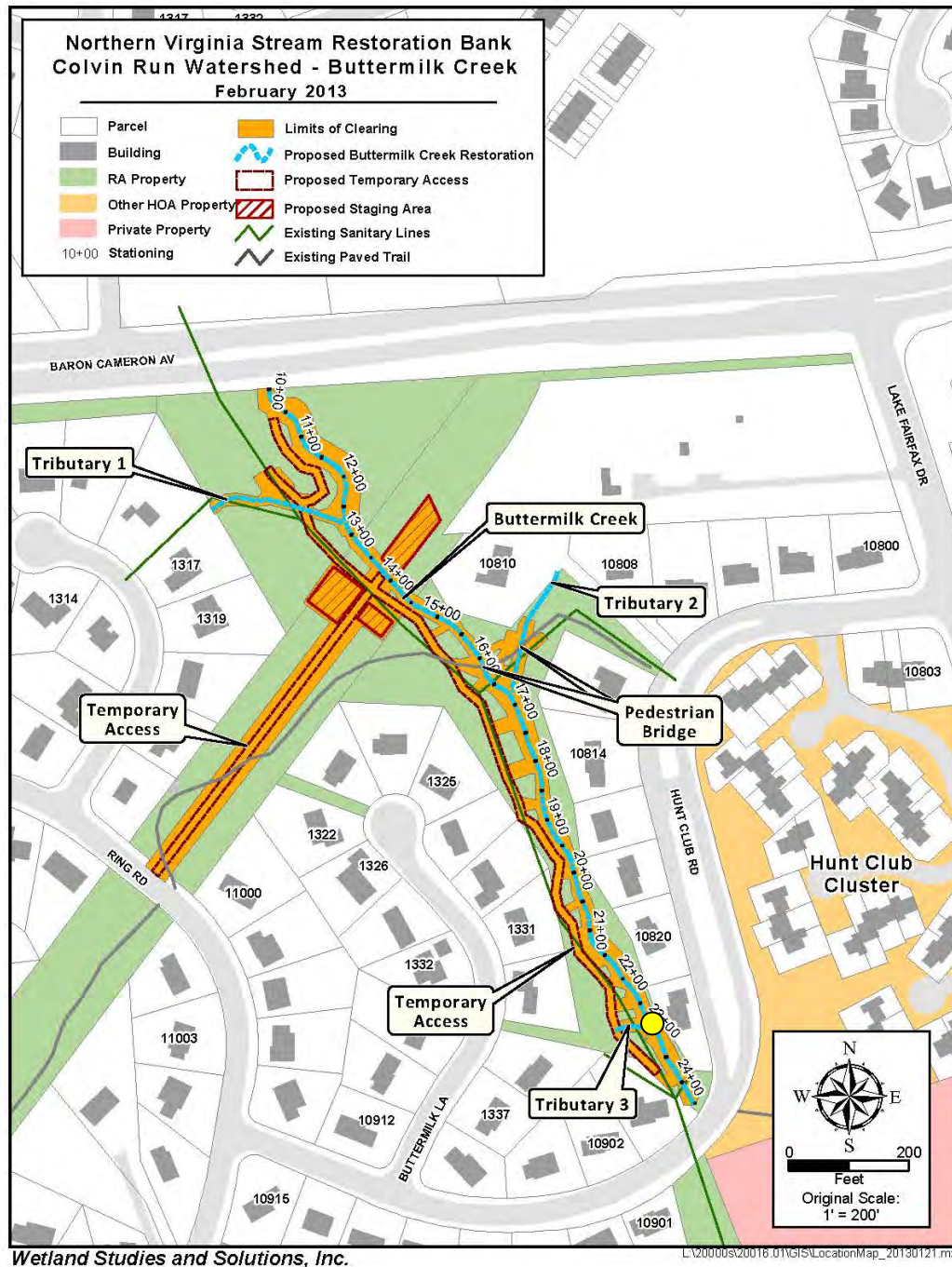


- Eroded stream banks
- Exposed utilities

Buttermilk Creek Existing Conditions



- Tributary 3
- Culvert under Hunt Club Road



Buttermilk Creek – Tree Save Plan



Northern Virginia Stream Restoration Bank
Colvin Run - Buttermilk Creek
Fairfax County, Virginia

Tree Save Plan

Copyright © 2012 Wetland Studies and Solutions, Inc.

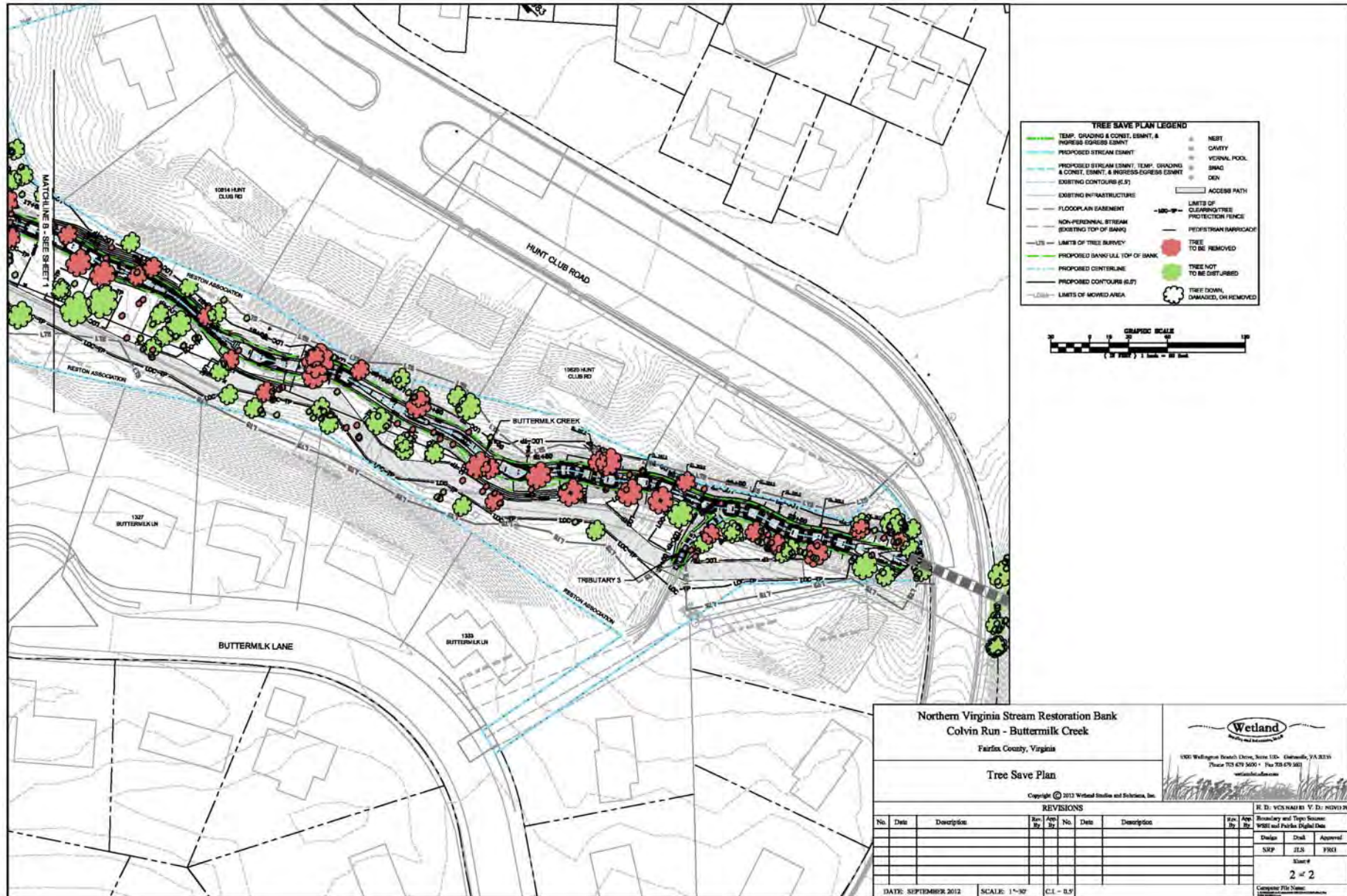
REVISIONS									
No.	Date	Description	Rev. By	App. By	No.	Date	Description	Rev. By	App. By

DATE: SEPTEMBER 2012 SCALE: 1" = 50' C.L. = 0.5'

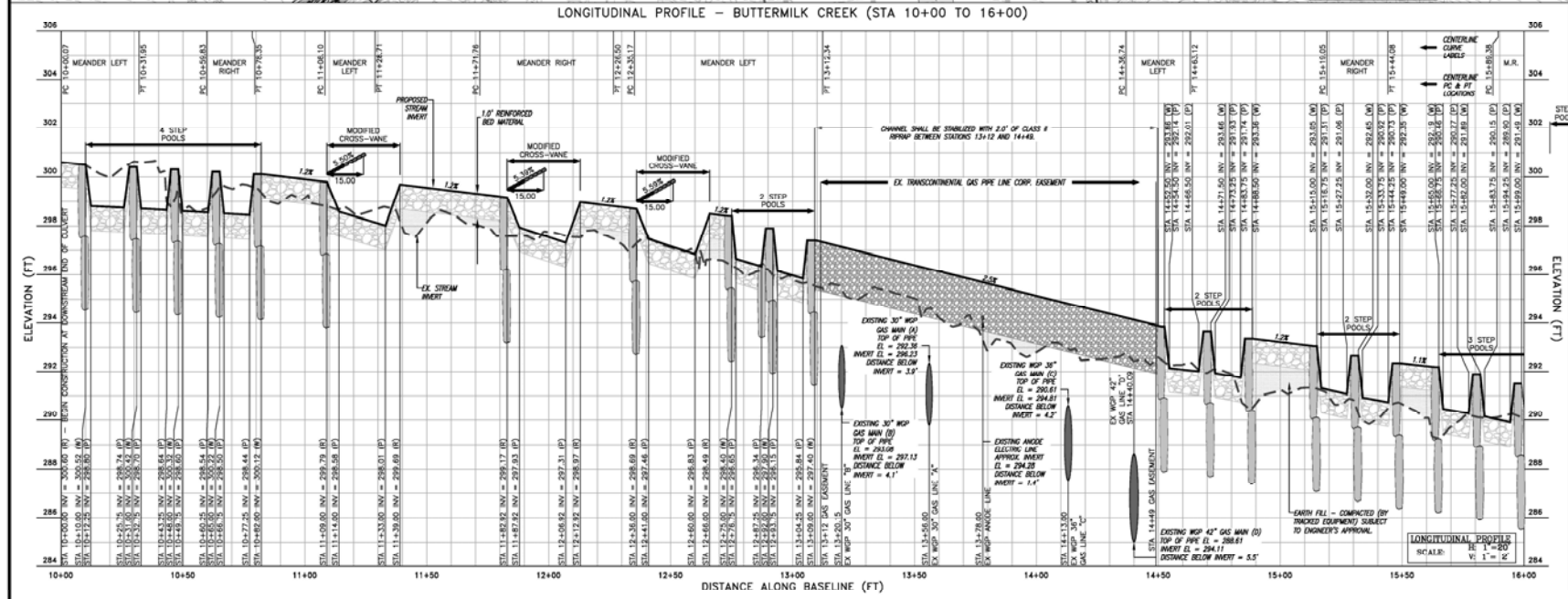
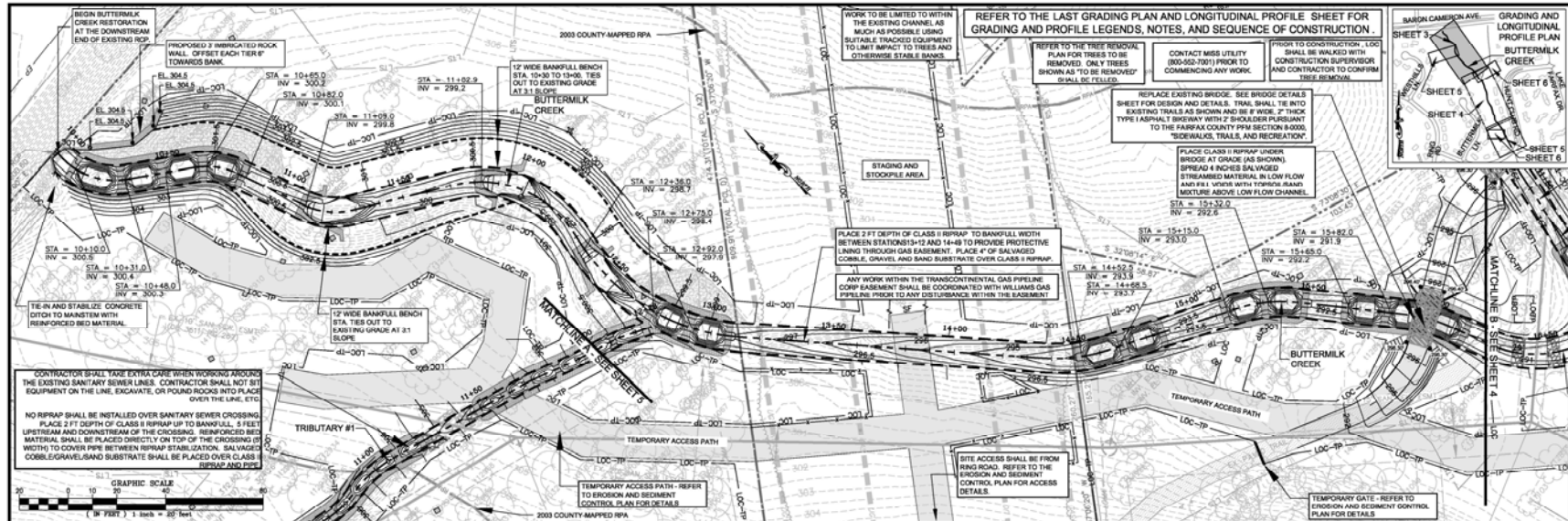
1 of 2

Computer Plot Name: [Blank]

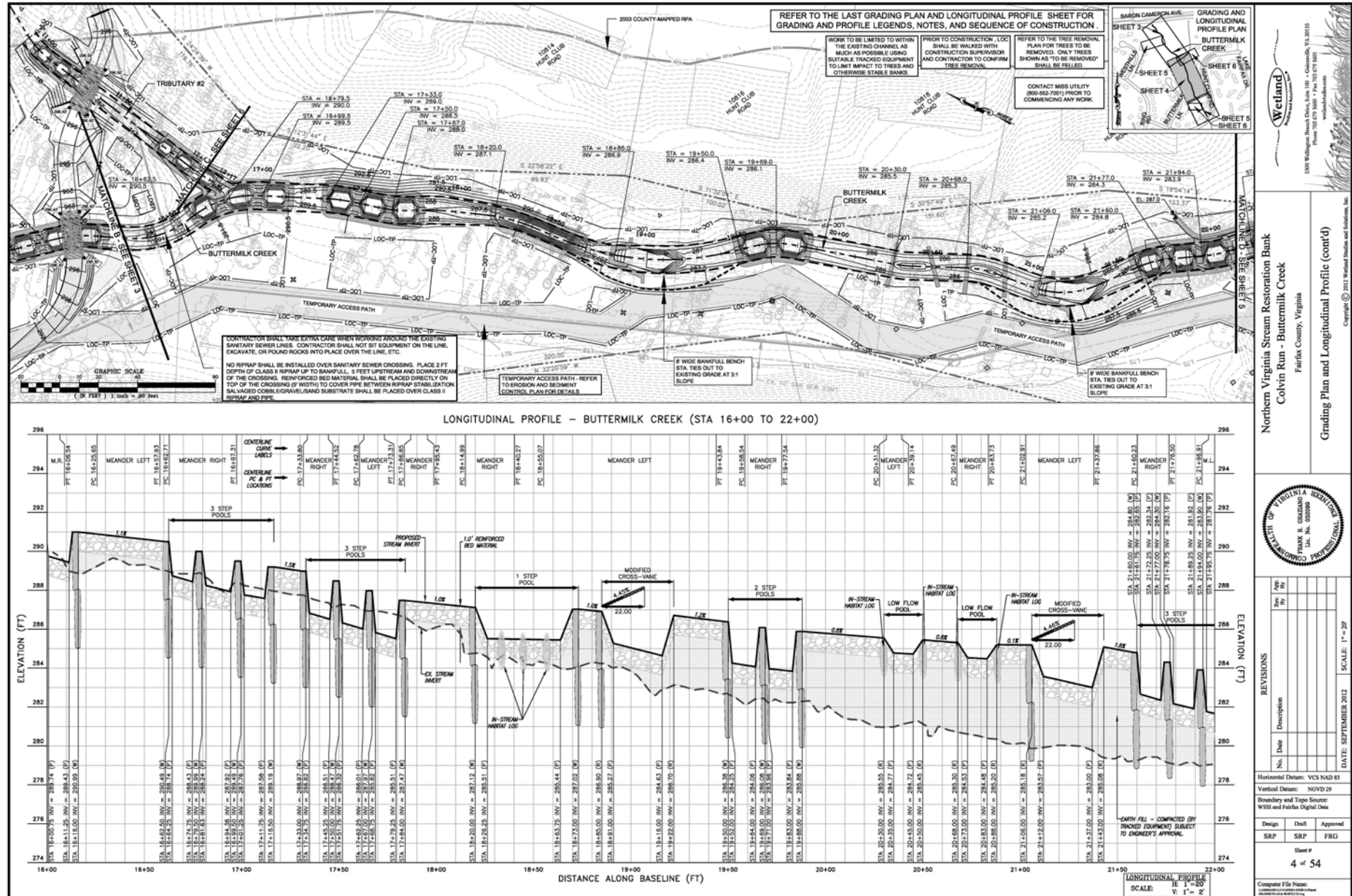
Buttermilk Creek – Tree Save Plan



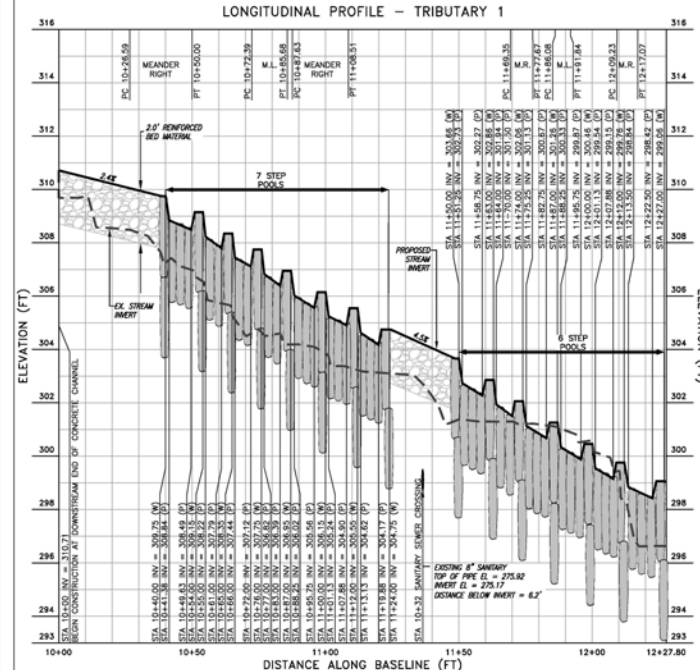
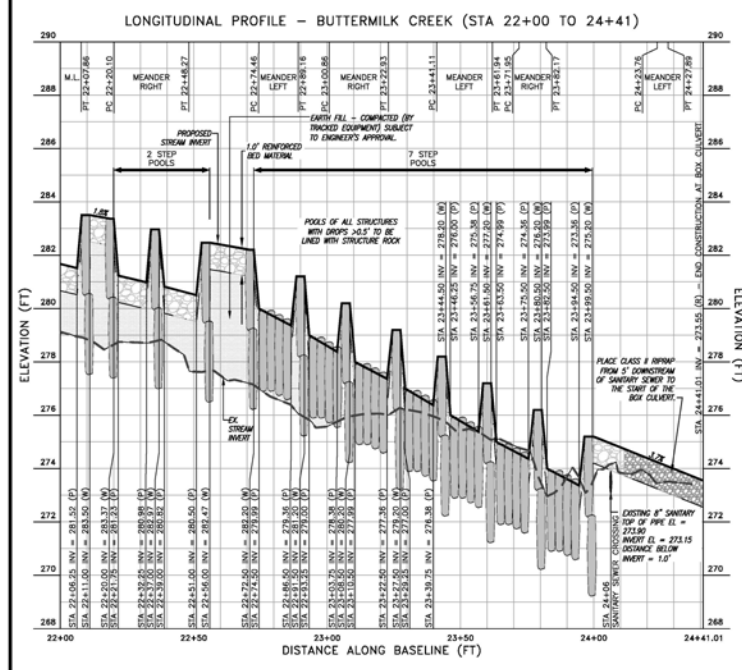
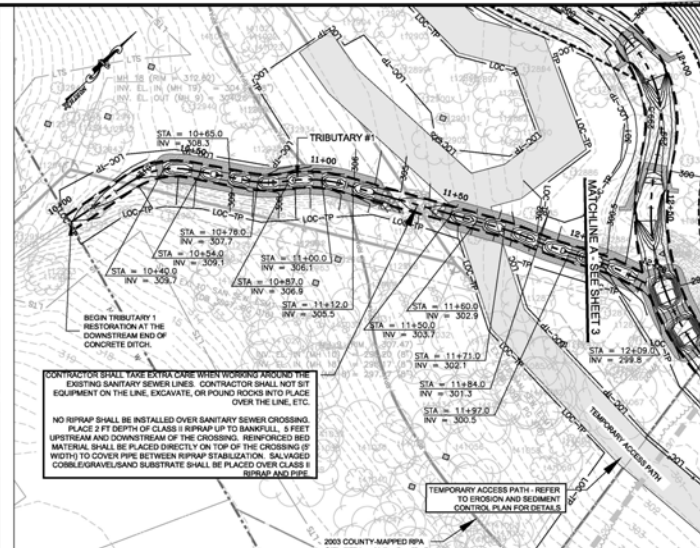
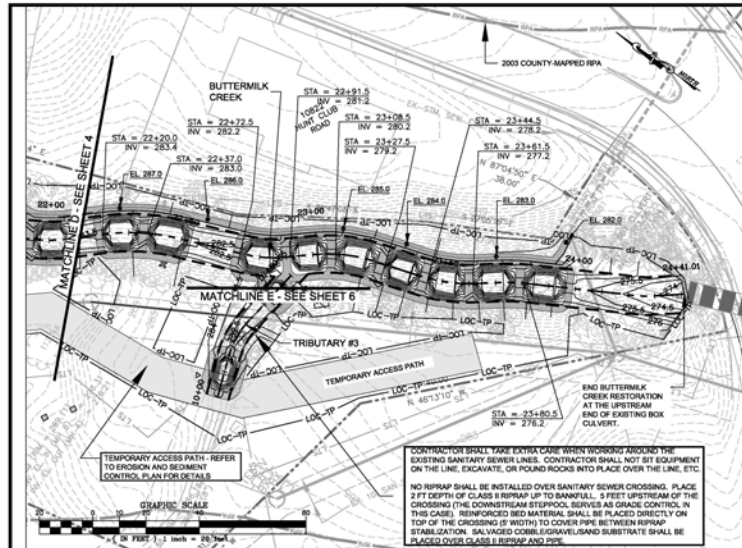
Buttermilk Creek – Final Plan

[illegible]

Buttermilk Creek – Final Plan



Buttermilk Creek – Final Plan



GRADING AND LONGITUDINAL PROFILE PLAN BUTTERMILK CREEK

SHEET 3
SHEET 4
SHEET 5
SHEET 6
SHEET 7
SHEET 8

REFER TO THE TREE REMOVAL PLAN FOR TREES TO BE REMOVED. ONLY TREES SHOWN AS "TO BE REMOVED" SHALL BE FIELDED.

CONTACT MISS UTILITY (800-662-7001) PRIOR TO COMMENCING ANY WORK.

PRIOR TO CONSTRUCTION, LOC SHALL BE WALKED WITH CONSTRUCTION SUPERVISOR AND CONTRACTOR TO CONFIRM TREE REMOVAL.

WORK TO BE LIMITED TO WITHIN THE EXISTING CHANNEL AS MUCH AS POSSIBLE USING SUITABLE TRACKED EQUIPMENT TO LIMIT IMPACT TO TREES AND OTHERWISE STABLE BANKS.

REFER TO THE LAST GRADING PLAN AND LONGITUDINAL PROFILE SHEET FOR GRADING AND PROFILE LEGENDS, NOTES, AND SEQUENCE OF CONSTRUCTION.

Wetland

3300 Wetland Bank Drive, Suite 101, Columbia, VA 22015
Phone 703.679.0000 • Fax 703.679.0001
wetland@wetland.com

Northern Virginia Stream Restoration Bank
Colvin Run - Buttermilk Creek
Fairfax County, Virginia

Grading Plan and Longitudinal Profile (cont'd)

Copyright © 2012 Wetland Studies and Solutions, Inc.

REVISIONS

No.	Date	Description
1	09/10/12	Initial Design
2	09/10/12	Revised Design
3	09/10/12	Final Design

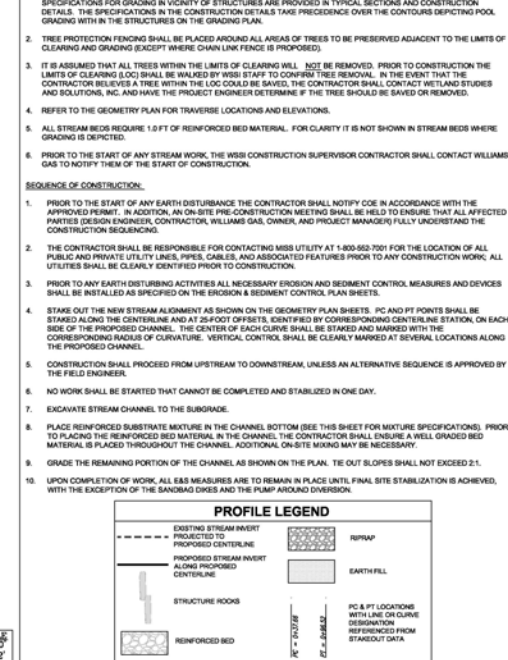
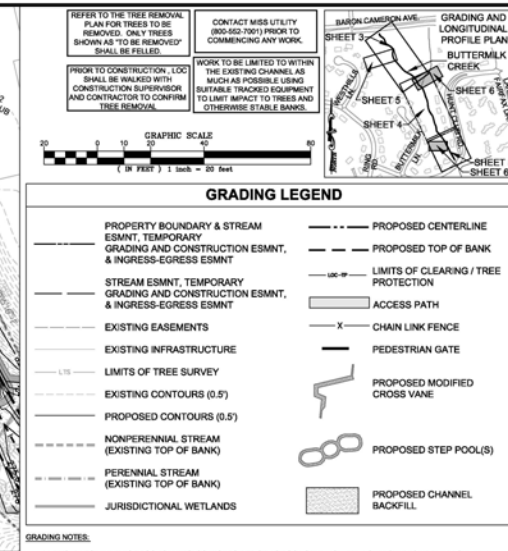
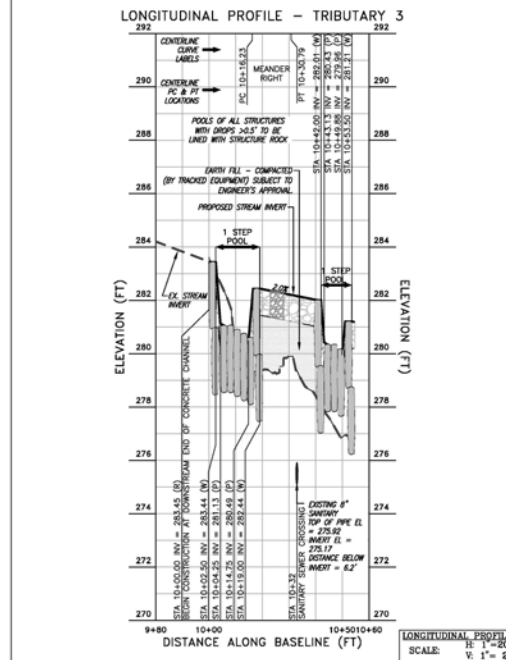
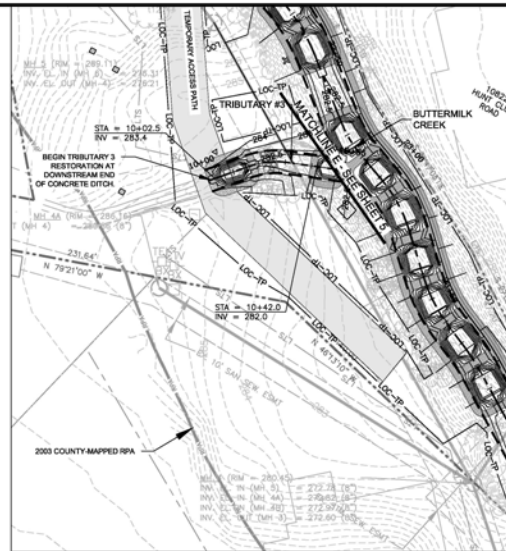
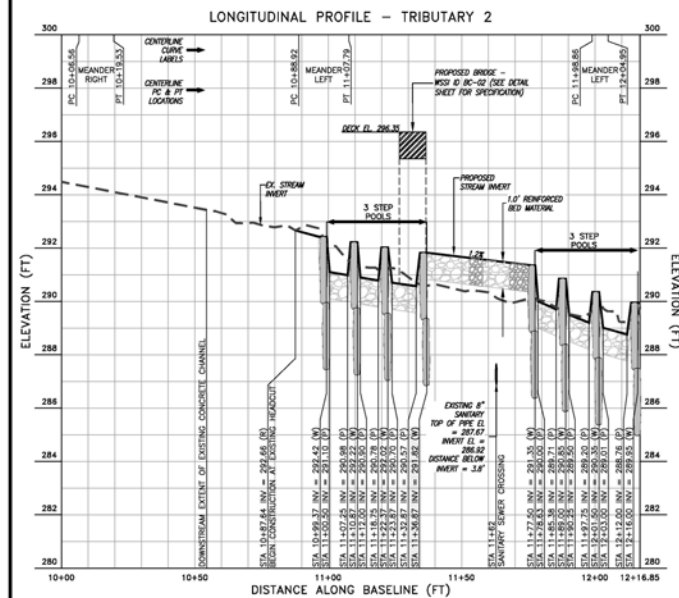
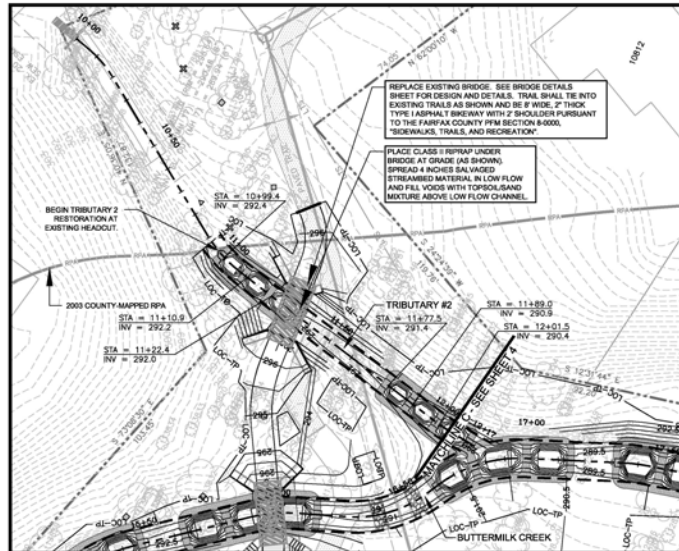
Horizontal Datum: VCH NAD 83
Vertical Datum: NGVD 29
Boundary and Topo Source: WGS84 and Fairfax Digital Data

Design: SRP
Check: SRP
Approved: FRG

Sheet #
5 of 54

Computer File Name: 11-1-2012-001.dwg
Plot Date: 09/10/12 10:00 AM
Plot Path: C:\Users\jdoyle\Documents\11-1-2012-001.dwg

Buttermilk Creek – Final Plan

[illegible]

Buttermilk Creek Tree Inventory

TREE INVENTORY SUMMARY
COLVIN RUN - BUTTERMILK CREEK
 (Compiled 1/17/2012, Revised 3/2/2012⁴ and 08/31/2012⁵)

DIAMETER (INCHES)	STATUS			
	TBR ¹		DND ²	TST ³
	(LIVE)	(DEAD / FALLEN)		
4-5" (Sapling)	39	1	87	127
6-9" (Pole)	61	2	144	207
10-17" (Small)	38	2	147	187
18-29" (Medium)	25	1	54	80
30"+ (Large)	3	---	7	10
	166	6		
TOTAL	172		439	611

¹ TBR means to be removed.

² DND means do not disturb.

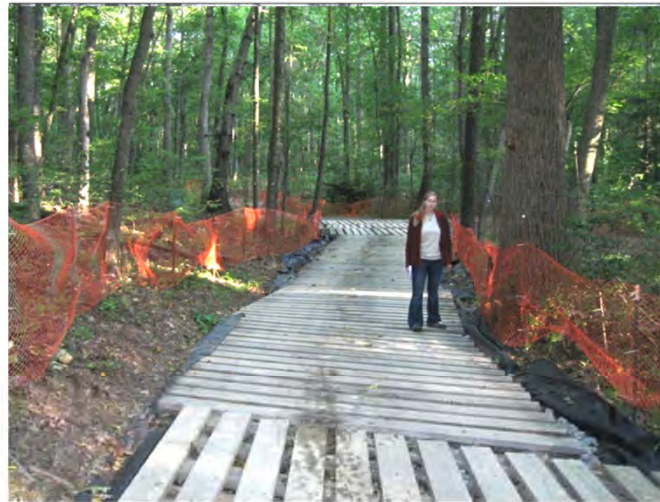
³ TST means total surveyed trees.

⁴ Added Tree 12909 to TBR list.

⁵ Added Trees 12734, 12736, 12737, 13772, and 13829 to TBR list.

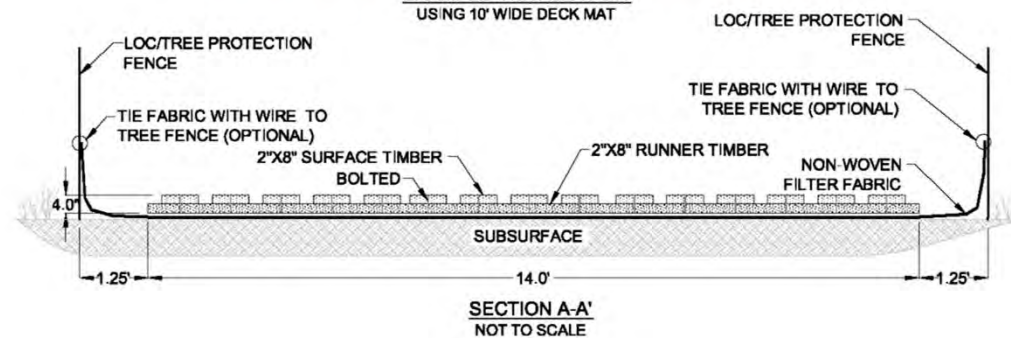
Access Road Deck Mat

ACCESS ROAD DECK MAT NOT TO SCALE



- NOTES:
1. MAT SHALL BE "DECK MAT" BY CAROLINA MAT INCORPORATED OR APPROVED EQUAL.
 2. MATS SHALL BE INSTALLED SUCH THAT THE SURFACE TIMBER RUNS PARALLEL WITH THE VEHICLE TREAD. SUBSEQUENT MATS SHALL BE INSTALLED SUCH THAT THEY BUTT UP AGAINST EACH OTHER.

EXAMPLE INSTALLATION
USING 10' WIDE DECK MAT



Buttermilk Creek – Time Extension

- If approved, we request a 3-year extension beyond the typical 18-month approval to allow for flexibility in construction schedule.
- Per the February 2012 DRB meeting, recently approved Colvin Run stream restoration projects were granted a 3-year extension beyond the 18-month typical approval to allow for flexibility in construction schedule.



Response to Citizen Comments

(Letter from Ellen Vogel, dated 2/14/2013)

- Notification package provided to affected parties is consistent with previously submitted packages associated with approved plans.
- Planting plans, details, and vegetation schedule included in the final plans mailed to Ms. Vogel (received 10/8/12 – see correspondence in provided packet) & presented at citizen meeting on 11/10/12.
- Letters dated 5/1/12 and 10/4/12 (final plans were included with this letter) directly address Mrs. Vogel's affected party letter dated 3/2/12.
- In letter dated 6/6/11 IRT (written in response to a complaint from Mrs. Vogel) states that WSSI *“has complied with all appropriate requirements, has used the most innovative and effective options to improve water quality and reduce erosion and sedimentation problems in the watershed, and has used appropriate design and construction methods to minimize further environmental impacts while still achieving the project purpose.”*



Questions

<http://reston.wetlandstudies.info/>

