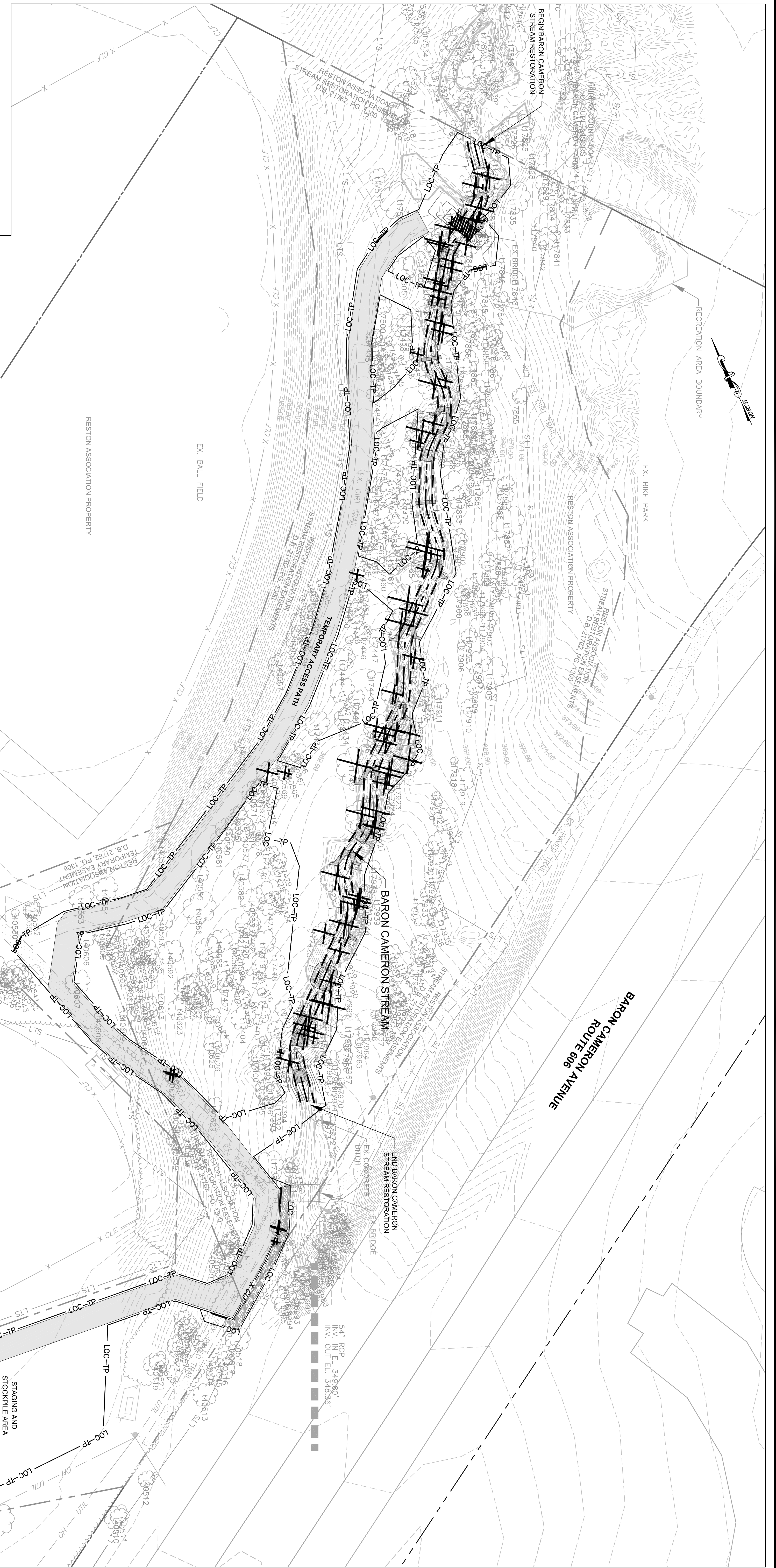


TREE REMOVAL LEGEND	
	PROPERTY BOUNDARY
	COMBINED STREAM ESMNT, TEMP. GRADING & CONST./INGRESS-EGRESS ESMNT & PROPERTY BOUNDARY
	COMBINED STREAM ESMNT AND TEMP. GRADING & CONST./INGRESS-EGRESS ESMNT
	COMBINED TEMP. GRADING & CONST./INGRESS-EGRESS ESMNT AND PROPERTY BOUNDARY
	TEMPORARY GRADING AND CONSTRUCTION EASEMENT AND INGRESS-EGRESS EASEMENT STREAM EASEMENT
	EXISTING CONTOURS (0.5')
	PROPOSED STREAM CENTERLINE
	LIMITS OF CLEARING
	LIMITS OF CLEARING/TREE PROTECTION
	LIMITS OF TREE SURVEY
	PROPOSED TOP OF BANK
	PERENNIAL STREAM (EXISTING TOP OF BANK)
	NONPERENNIAL STREAM (EXISTING TOP OF BANK)
	TREES TO BE REMOVED



IT IS ASSUMED THAT ALL TREES WITHIN THE LIMITS OF CLEARING WILL NOT BE REMOVED. PRIOR TO CONSTRUCTION THE LIMITS OF CLEARING (LOC) SHALL BE WALKED BY WETLAND STUDIES AND SOLUTIONS, INC. (WSS) STAFF TO CONFIRM TREE REMOVAL. IN THE EVENT THAT THE CONTRACTOR BELIEVES A TREE WITHIN THE LOC COULD BE SAVED, THE CONTRACTOR SHALL CONTACT WSS AND HAVE THE PROJECT ENGINEER DETERMINE IF THE TREE SHOULD BE SAVED OR REMOVED.



THIS SHEET TO BE USED FOR TREE REMOVAL PURPOSES ONLY.

REVISIONS				
No.	Date	Description	Rev. By	App. By

Vertical Datum: NGVD 29	Horizontal Datum: VCS NAD 83
Boundary and Topo Source: WSS and Fairfax Digital Data	
Design: JLS	Date: Approved
NAS: FRG	

Computer File Name: <small>Colvin Run - Baron Cameron Park Tree Removal.dwg</small>	Sheet #
	17 of 38



Northern Virginia Stream Restoration Bank
 Colvin Run - Baron Cameron Park
 Fairfax County, Virginia

Tree Removal Plan

Copyright © 2012 Wetland Studies and Solutions, Inc.

5300 Wellington Branch Drive, Suite 100 • Gainesville, VA 20155
 Phone 703 679 5600 • Fax 703 679 5601
 wetlandstudies.com