



# **Northern Virginia Stream Restoration Bank Reston Status**

**August 21, 2012**

**Presented by Mike Rolband, P.E.**

Wetland Studies and Solutions, Inc.

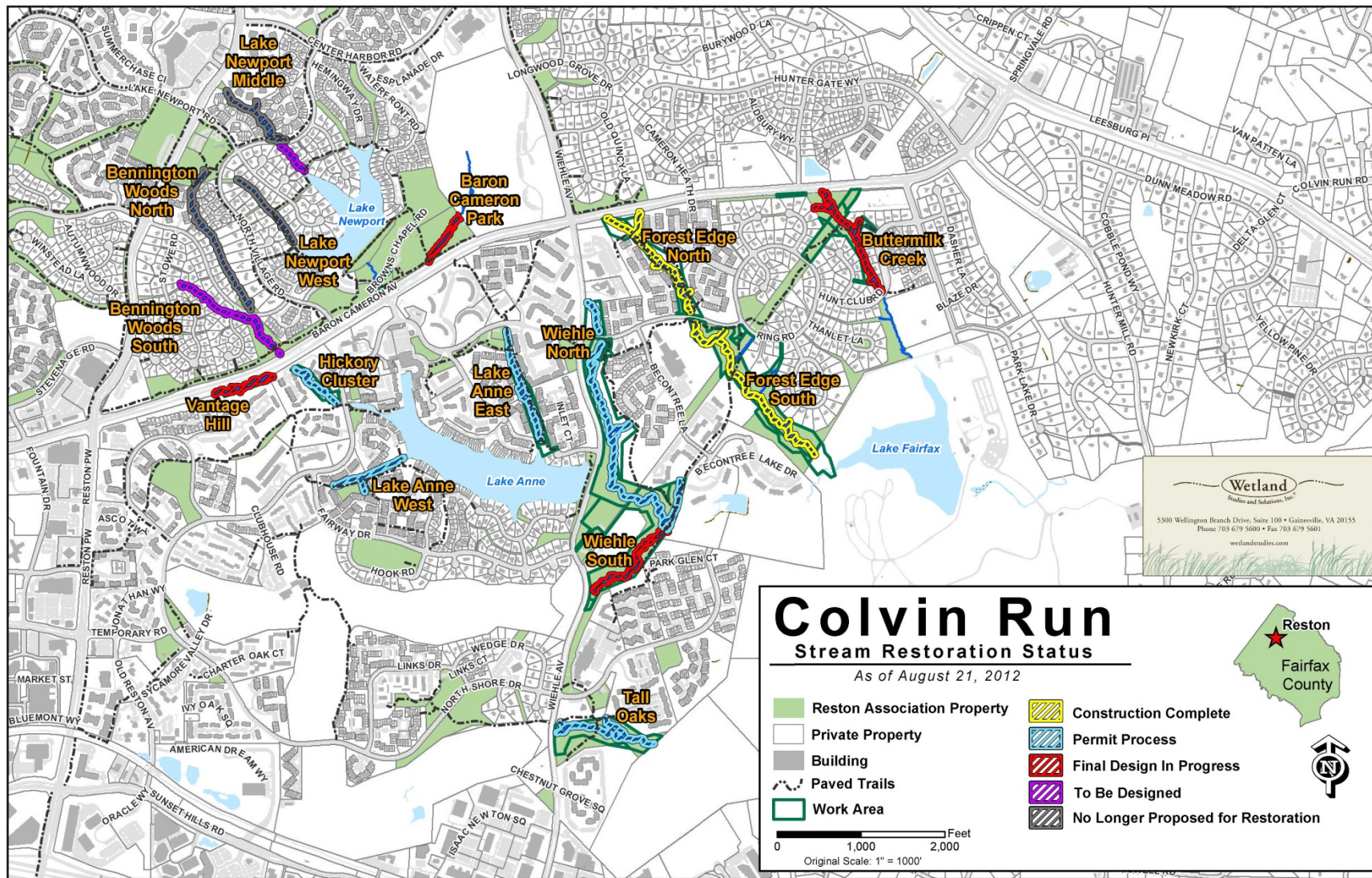
5300 Wellington Branch Drive · Suite 100 · Gainesville · Virginia 20155

[www.wetlandstudies.com](http://www.wetlandstudies.com)





# Reston Status







# **Northern Virginia Stream Restoration Bank Baron Cameron Final Plan**

**August 21, 2012**

**Presented by Nathan Staley, P.E.**

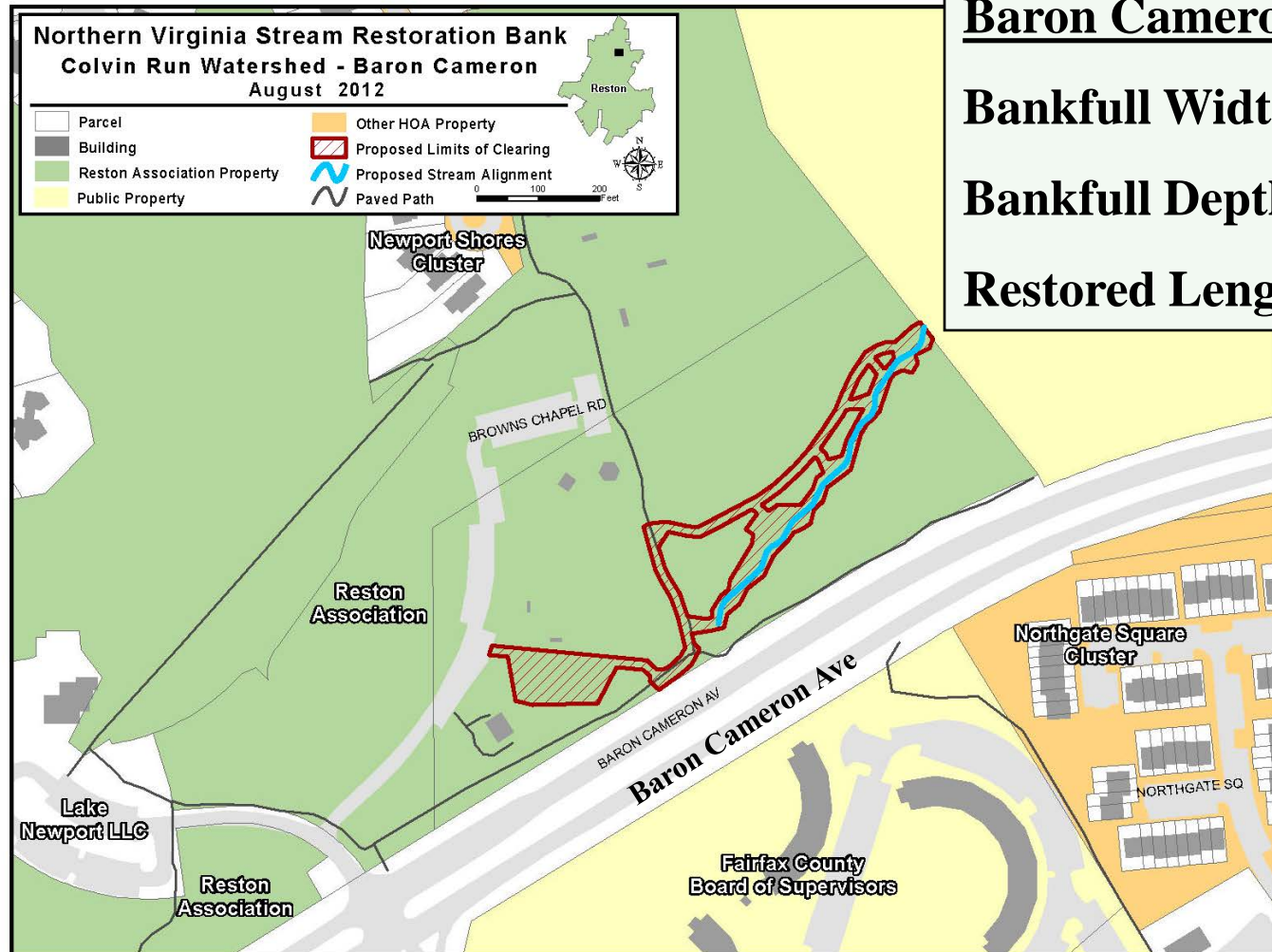
Wetland Studies and Solutions, Inc.

5300 Wellington Branch Drive · Suite 100 · Gainesville · Virginia 20155

[www.wetlandstudies.com](http://www.wetlandstudies.com)



# Baron Cameron



## Baron Cameron

**Bankfull Width = 8'**

**Bankfull Depth = 0.8'**

**Restored Length = 610'**

Wetland Studies and Solutions, Inc.

L:\20000s\20011\GIS\LocationMap\BaronCameron\_LocationMap.mxd



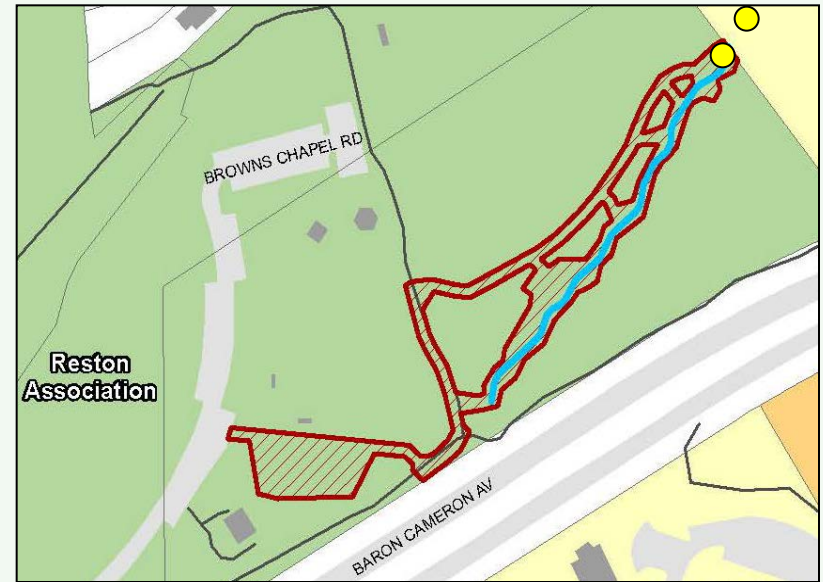
# Baron Cameron- Existing Conditions



- Existing swale approximately 300 ft upstream of project area on Fairfax County property



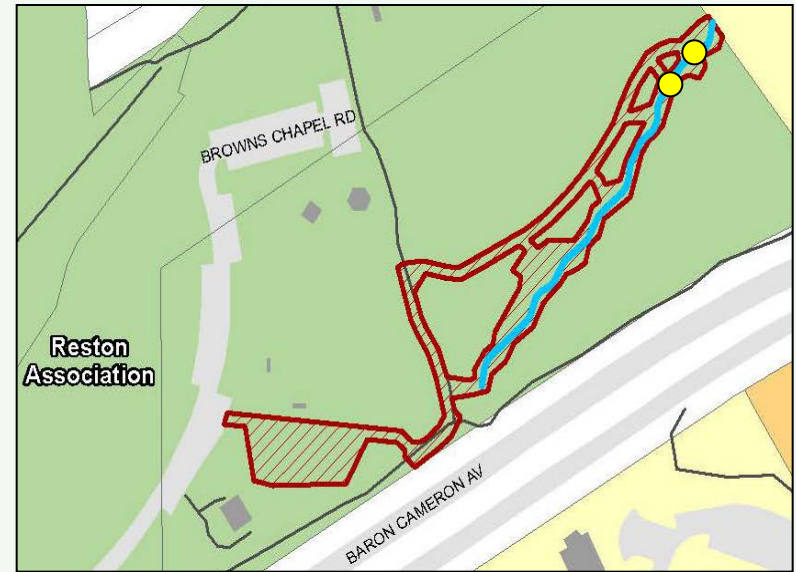
# Baron Cameron- Existing Conditions



- Exposed tree roots and incised banks immediately upstream of project area
- Upstream extent of project area



# Baron Cameron- Existing Conditions



- Existing bridge to be replaced
- Exposed tree roots and incision downstream of existing bridge

# Baron Cameron- Existing Conditions



- Severe incision and tree damage in project area





# Baron Cameron- Existing Conditions

- Existing unpaved path will be the Temporary Construction Access Path



# Baron Cameron – Design Highlights



1. Upstream tie out at Fairfax County Property
2. Replace existing bridge
3. Access along dirt trail
4. Downstream tie out at concrete ditch

5. Mulch trail bypass along paved trail
6. Site access from small parking area behind Brown's Chapel to limit park disturbance

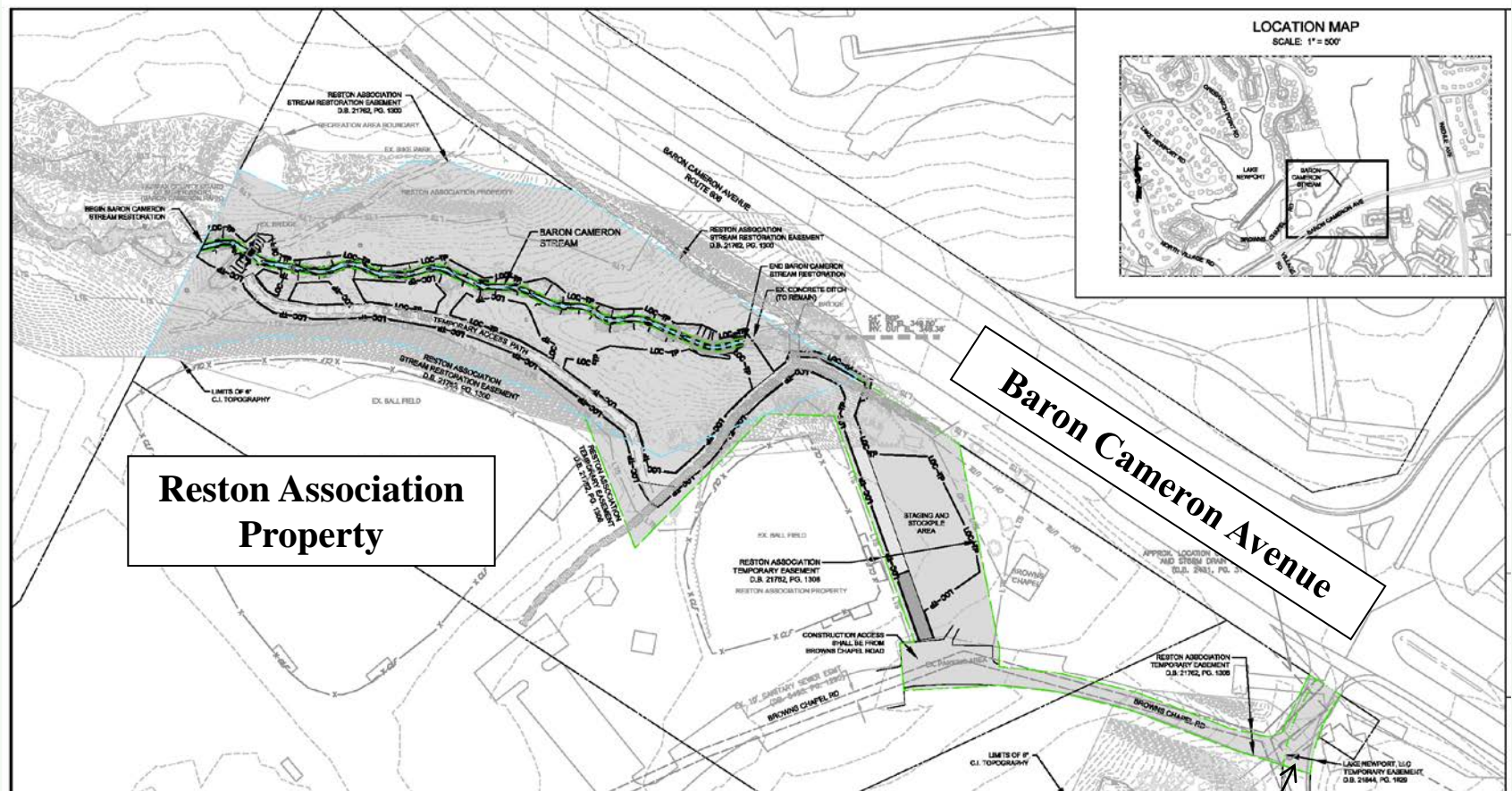


# Example of Installed Pedestrian/Vehicular Bridge





# Baron Cameron – Easements



**Reston Association – Restoration and Temporary**  
**Lake Newport, LLC - Temporary**

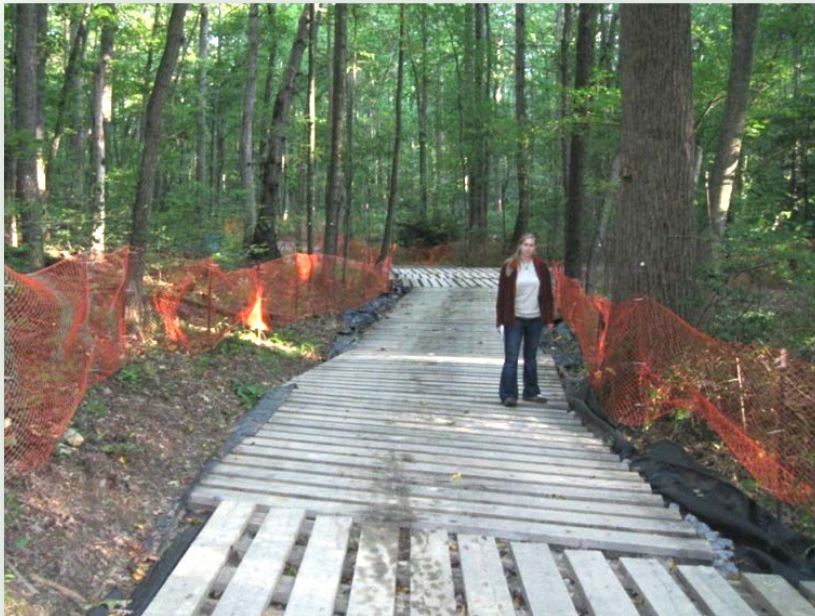
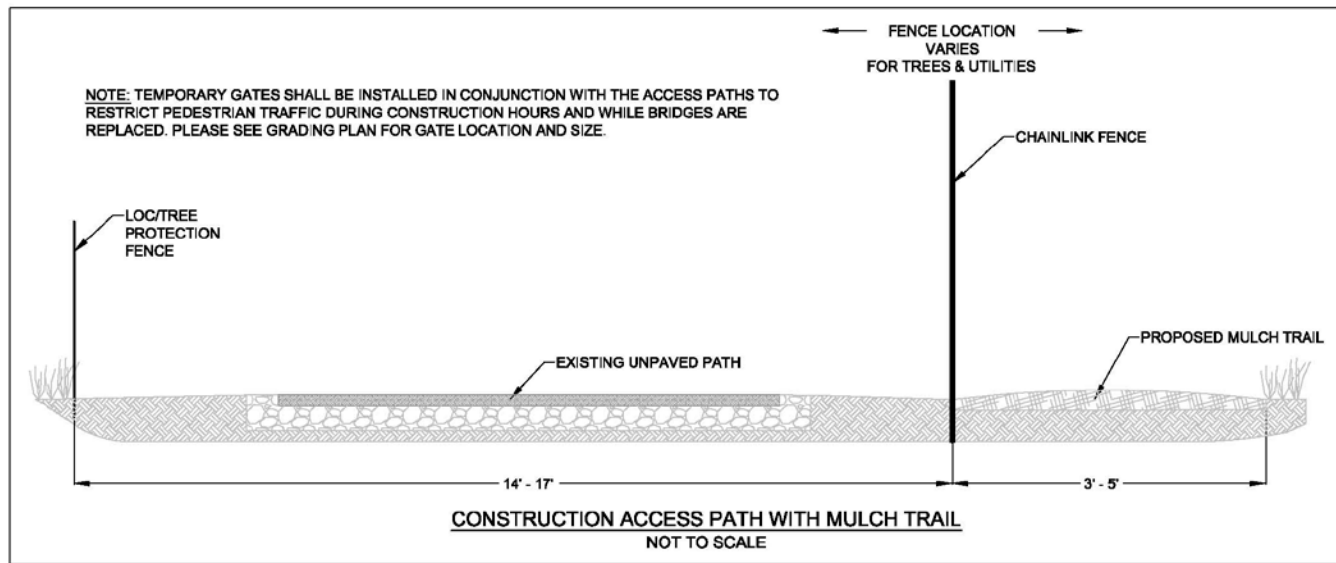
**Lake Newport, LLC**



## 7



# Access Road Deck Mat





# Baron Cameron– Tree Survey



**432 Trees Surveyed on Reston Association Property**

# Baron Cameron Tree Inventory

| TREE INVENTORY SUMMARY<br>BARON CAMERON |                  |                 |                  |                  |
|---|------------------|-----------------|------------------|------------------|
| DIAMETER                                | STATUS           |                 |                  |                  |
|   | TBR <sup>1</sup> |                 | DND <sup>2</sup> | TST <sup>3</sup> |
| (INCHES)                                | (LIVE)           | (DEAD / FALLEN) |                  |                  |
| 4-5" (Sapling)                          | 4                | 0               | 53               | 57               |
| 6-9" (Pole)                             | 14               | 1               | 143              | 158              |
| 10-17" (Small)                          | 26               | 2               | 139              | 167              |
| 18-29" (Medium)                         | 20               | 0               | 24               | 44               |
| 30"+ (Large)                            | 5                | 0               | 1                | 6                |
|   | <b>69</b>        | <b>3</b>        |                  |                  |
| <b>TOTAL</b>                            | <b>72</b>        |                 | <b>360</b>       | <b>432</b>       |

<sup>1</sup> TBR means to be removed.  
<sup>2</sup> DND means do not disturb.  
<sup>3</sup> TST means total surveyed trees.  
 Compiled 02/10/2011 and 04/27/2011; Revised 04/01/2011 and 04/27/2011



# Questions

